

KEPPEL STREET

WILLIAM STREET

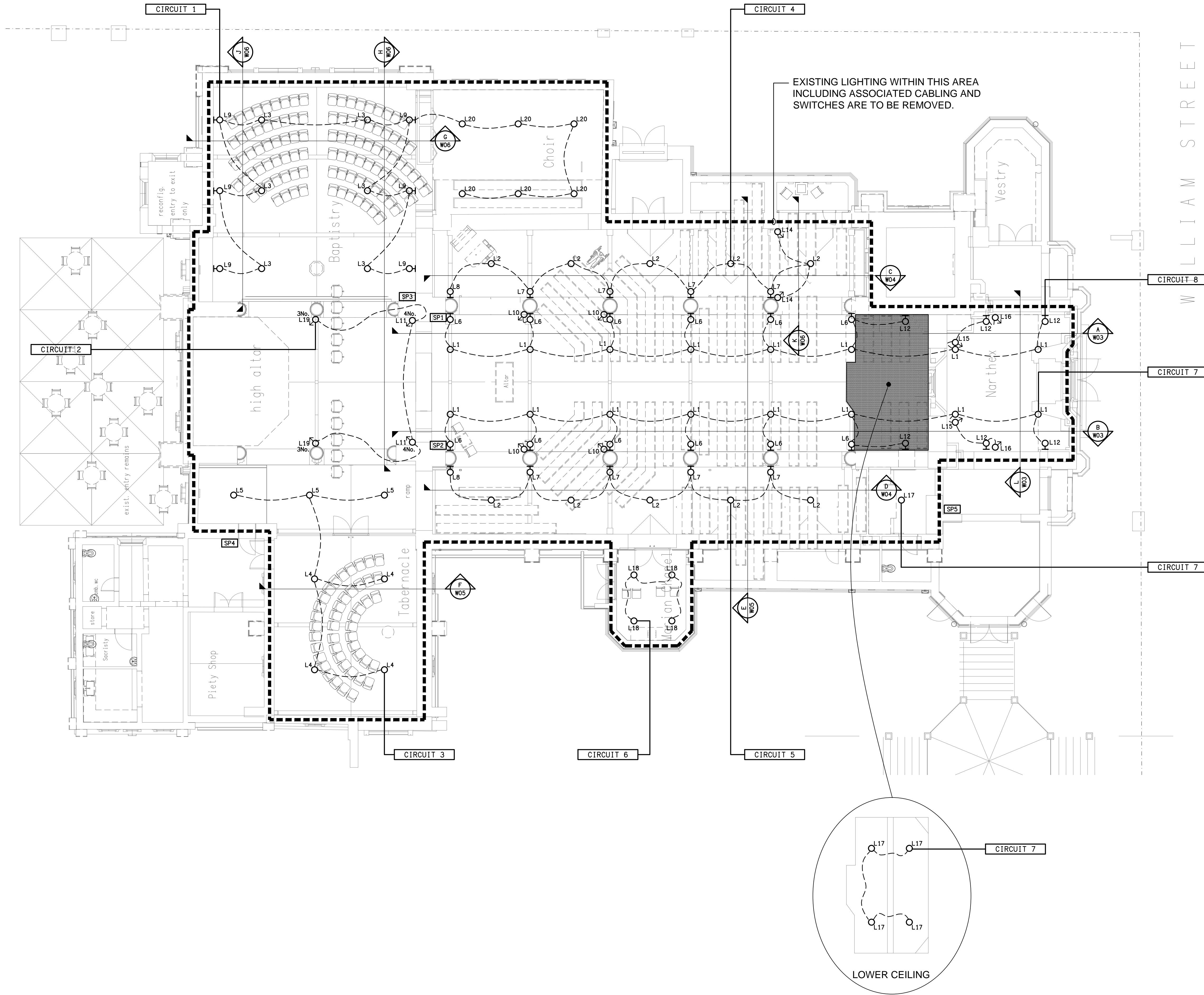
## LEGEND

SPx LIGHTING SWITCH PANEL, TYPE AS NOTED.

C-x CABLE ACCESS, TYPE AS NOTED.

CIRCUIT x LIGHTING CIRCUIT, TYPE AS NOTED.

- L1 100W TRUSS CAN DOWNLIGHT.  
L2 60W RAFTER CAN DOWNLIGHT.  
L3 100W ROOF CAN DOWNLIGHT.  
L4 100W TIMBER BEAM CAN DOWNLIGHT.  
L5 60W TIMBER BEAM CAN DOWNLIGHT.  
L6 60W COLUMN ADJUSTABLE UPLIGHT.  
L7 60W COLUMN ADJUSTABLE UPLIGHT.  
L8 60W COLUMN ADJUSTABLE UPLIGHT.  
L9 60W TIMBER STRUCTURE ADJUSTABLE UPLIGHT.  
L10 60W COLUMN ADJUSTABLE SPOT LIGHT.  
L11 60W MAIN COLUMN ADJUSTABLE SPOT LIGHT.  
L12 60W WALL MOUNTED ADJUSTABLE UPLIGHT.  
L13 60W TRUSS ADJUSTABLE SPOT LIGHT.  
L14 60W TRUSS ADJUSTABLE SPOT LIGHT.  
L15 60W TRUSS ADJUSTABLE SPOT LIGHT.  
L16 60W WALL MOUNTED ADJUSTABLE SPOT LIGHT.  
L17 22W RECESSED DOWNLIGHT.  
L18 13W RECESSED DOWNLIGHT.  
L19 60W WALL MOUNTED ADJUSTABLE SPOT LIGHT.  
L20 28W RECESSED DOWNLIGHT.



ELECTRICAL DESIGN GROUP BRISBANE  
PTY LTD  
ACN 092 710 793  
TRADING AS:  
ELECTRICAL DESIGN GROUP

THE COPYRIGHT OF THIS DRAWING  
REMAINS THE PROPERTY OF THE  
ELECTRICAL DESIGN GROUP.  
USE FIGURED DIMENSIONS  
IN PREFERENCE TO SCALE.  
ALL DIMENSIONS TO BE  
VERIFIED ONSITE.

**ELECTRICAL DESIGN GROUP**  
ELECTRICAL BUILDING SERVICES CONSULTANTS  
BRISBANE GOLD COAST

P.O.Box 15, Sherwood Q.4075  
Phone: (07) 3278 4375  
Email: brisbane@edg.net.au  
Web: www.edg.net.au

PROJECT:  
CATHEDRAL OF ST MICHAEL & ST JOHN  
BATHURST - SCHEMATIC DESIGN

CORNER WILLIAM STREET & KEPPEL STREET, BATHURST, NSW

B	PRELIMINARY	19/03/2020
REV:	DESCRIPTION:	DATE:

DRAWING:  
**ELECTRICAL SERVICES**  
**INTERNAL LIGHTING PLAN**

SCALE:  
1:100

AT A1

PROJECT NO:  
**C2057a**

DRAWING NO:  
**W01**

REVISION:  
**B**