

KEPPEL STREET

WILLIAM STREET

LEGEND

SPx LIGHTING SWITCH PANEL, TYPE AS NOTED.

C-x CABLE ACCESS, TYPE AS NOTED.

CIRCUIT x LIGHTING CIRCUIT, TYPE AS NOTED.

L1 60W TRUSS CAN DOWNLIGHT.

L2 60W RAFTER CAN DOWNLIGHT.

L3 60W ROOF CAN DOWNLIGHT.

L4 60W TIMBER BEAM CAN DOWNLIGHT.

L5 60W TIMBER BEAM CAN DOWNLIGHT.

L6 60W COLUMN ADJUSTABLE UPLIGHT.

L7 60W COLUMN ADJUSTABLE UPLIGHT.

L8 60W COLUMN ADJUSTABLE UPLIGHT.

L9 60W TIMBER STRUCTURE ADJUSTABLE UPLIGHT.

L10 60W COLUMN ADJUSTABLE SPOT LIGHT.

L11 60W MAIN COLUMN ADJUSTABLE SPOT LIGHT.

L12 60W WALL MOUNTED ADJUSTABLE UPLIGHT.

L13 60W TRUSS ADJUSTABLE SPOT LIGHT.

L14 60W TRUSS ADJUSTABLE SPOT LIGHT.

L15 60W TRUSS ADJUSTABLE SPOT LIGHT.

L16 60W WALL MOUNTED ADJUSTABLE SPOT LIGHT.

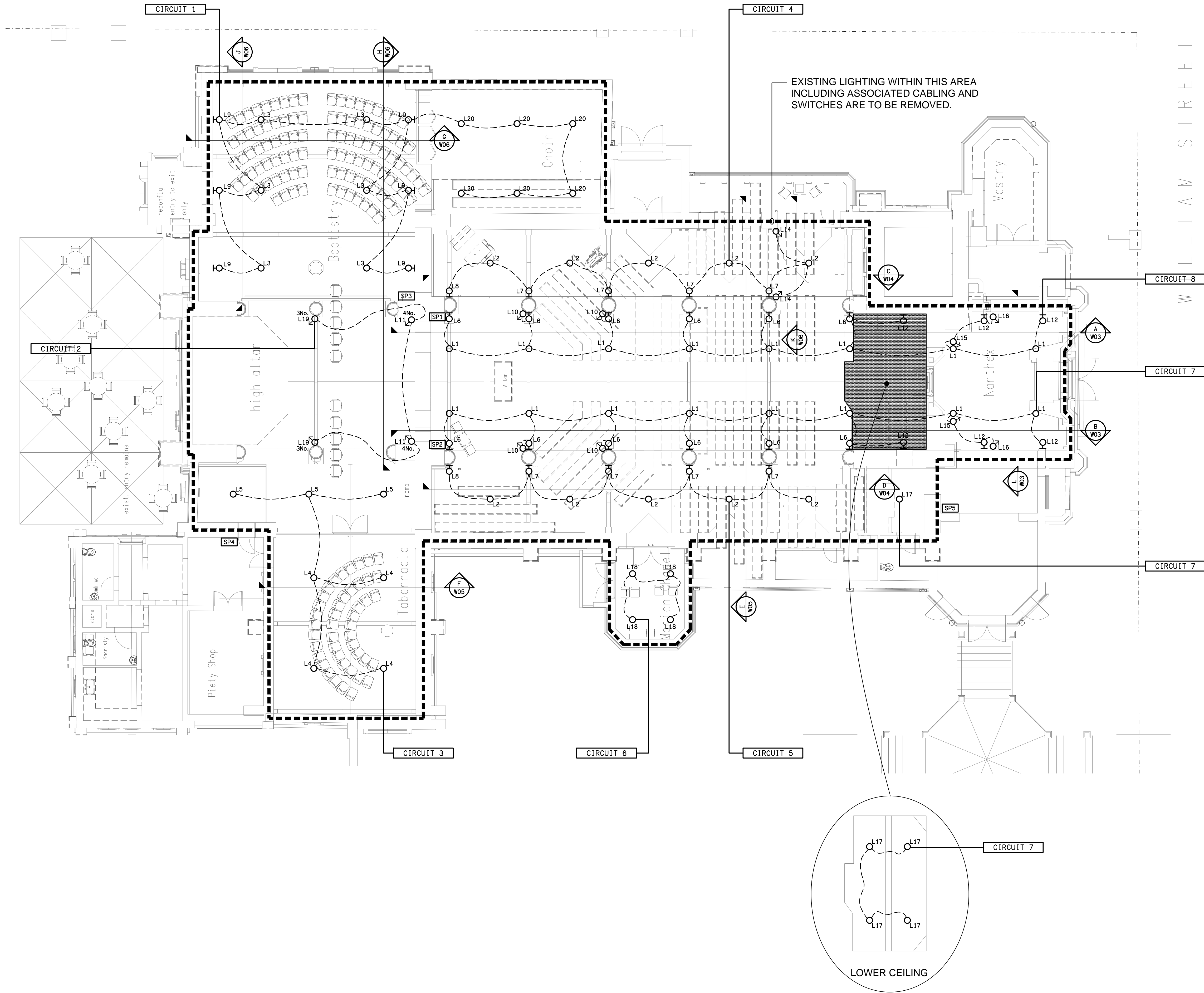
L17 22W RECESSED DOWNLIGHT.

L18 13W RECESSED DOWNLIGHT.

L19 60W WALL MOUNTED ADJUSTABLE SPOT LIGHT.

L20 28W RECESSED DOWNLIGHT.

EXISTING LIGHTING WITHIN THIS AREA INCLUDING ASSOCIATED CABLING AND SWITCHES ARE TO BE REMOVED.



ELECTRICAL DESIGN GROUP BRISBANE
PTY LTD
ACN 092 710 793
TRADING AS:
ELECTRICAL DESIGN GROUP

THE COPYRIGHT OF THIS DRAWING
REMAINS THE PROPERTY OF THE
ELECTRICAL DESIGN GROUP.

USE FIGURED DIMENSIONS
IN PREFERENCE TO SCALE.

ALL DIMENSIONS TO BE
VERIFIED ONSITE.

ELECTRICAL DESIGN GROUP
ELECTRICAL BUILDING SERVICES CONSULTANTS
BRISBANE GOLD COAST

P.O.Box 15, Sherwood Q.4075
Phone: (07) 3278 4375
Email: brisbane@edg.net.au
Web: www.edg.net.au

PROJECT:
CATHEDRAL OF ST MICHAEL & ST JOHN
BATHURST - SCHEMATIC DESIGN

CORNER WILLIAM STREET & KEPPEL STREET, BATHURST, NSW

B	PRELIMINARY	19/03/2020
REV:	DESCRIPTION:	DATE:

DRAWING:
ELECTRICAL SERVICES
INTERNAL LIGHTING PLAN

SCALE:
1:100

AT A1

PROJECT NO:
C2057a

DRAWING NO:
W01

REVISION:
B