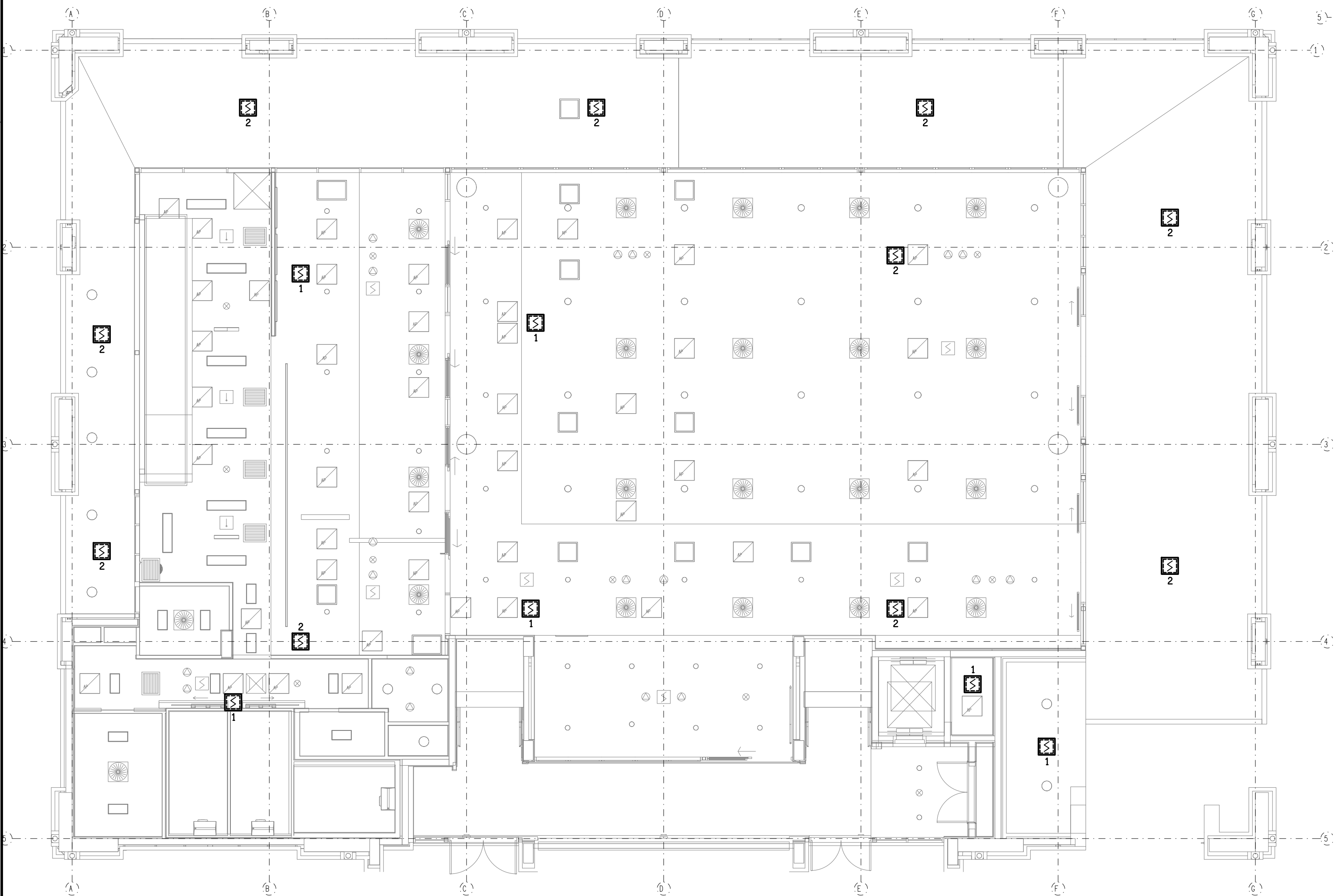
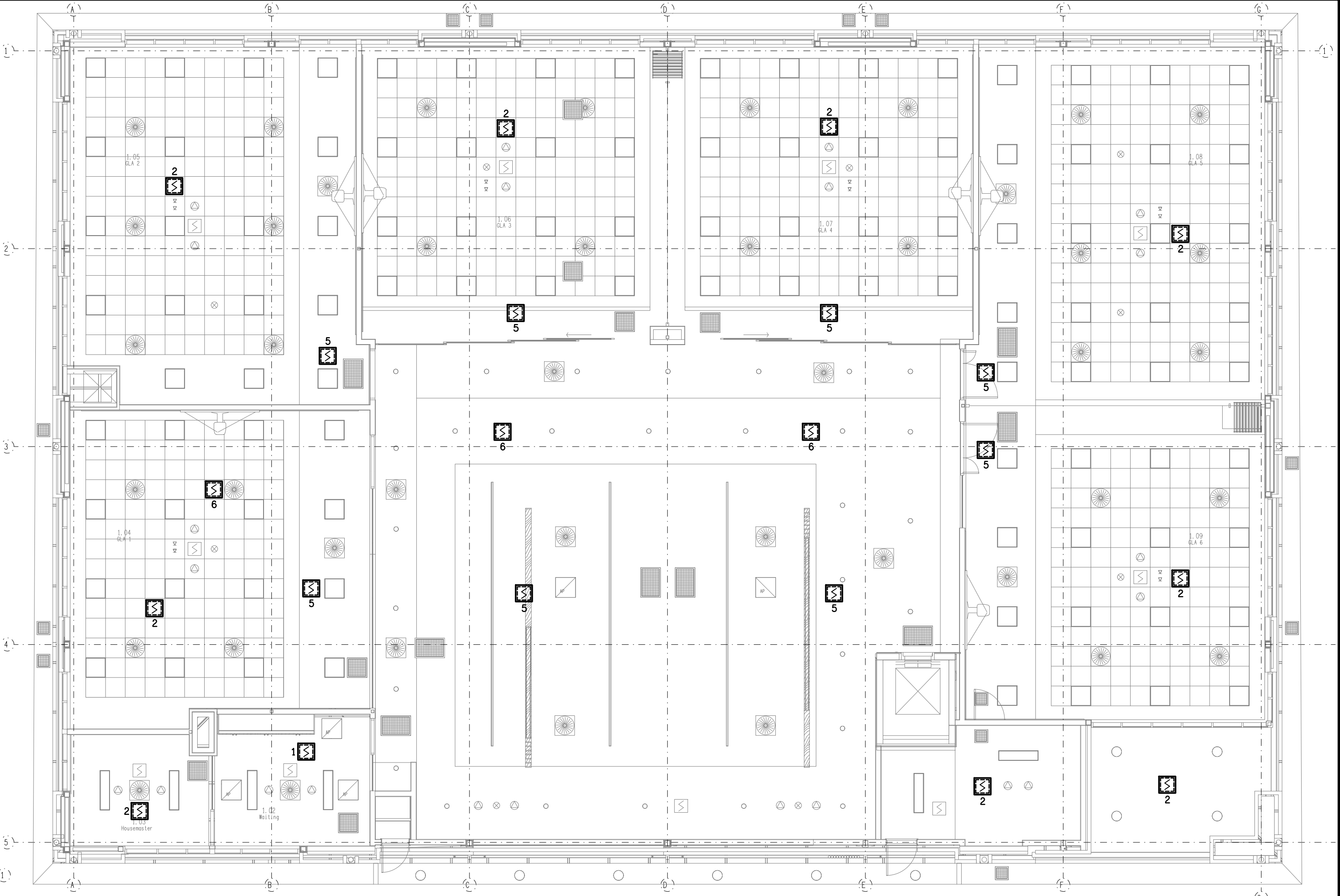


LEGEND

1. CONCEALED SPACE SMOKE DETECTOR C/W REMOTE INDICATOR, ACCESS VIA ACCESS PANEL.
2. CONCEALED SPACE SMOKE DETECTOR MOUNTED ON A REMOVABLE FAMCO BRACKET C/W REMOTE INDICATOR.
3. CONCEALED SPACE SMOKE DETECTOR MOUNTED ON A REMOVABLE FAMCO BRACKET EXTENDING THROUGH THE INSULATION UNDER THE BOTTOM TRUSS CORD INTO THE ROOF SPACE C/W REMOTE INDICATOR.
4. CONCEALED SPACE SMOKE DETECTOR MOUNTED ON A REMOVABLE FAMCO BRACKET C/W REMOTE INDICATOR. THE FAMCO BRACKET AND INDICATOR IS TO BE MOUNTED ON THE SUSPENDED MOUNTING PANEL IN THE CEILING SPACE ABOVE THE OPEN DECORATIVE CEILING GRID.
5. CONCEALED SPACE SMOKE DETECTOR MOUNTED ON A HORIZONTAL REMOVABLE FAMCO BRACKET C/W REMOTE INDICATOR. THE FAMCO BRACKET AND INDICATOR IS TO BE ACCESSED FROM THE CEILING SPACE PLANT ROOM.
6. CONCEALED SPACE SMOKE DETECTOR LOCATED UNDER THE FLOOR OF THE ROOF SPACE PLANT ROOM. MOUNT THE DETECTOR ON A REMOVABLE FAMCO BRACKET C/W REMOVABLE INDICATOR.



GROUND LEVEL CEILING SPACE LAYOUT



LEVEL 1 CEILING SPACE LAYOUT

ELECTRICAL DESIGN GROUP BRISBANE
PTY LTD
ACN 092 710 793
TRADING AS:
ELECTRICAL DESIGN GROUP

THE COPYRIGHT OF THIS DRAWING
REMAINS THE PROPERTY OF THE
ELECTRICAL DESIGN GROUP.
USE FIGURED DIMENSIONS
IN PREFERENCE TO SCALE.
ALL DIMENSIONS TO BE
VERIFIED ONSITE.

ELECTRICAL DESIGN GROUP
ELECTRICAL BUILDING SERVICES CONSULTANTS
BRISBANE GOLD COAST

P.O.Box 15, Sherwood Q.4075
Phone: (07) 3278 4375
Email: brisbane@edg.net.au
Web: www.edg.net.au

PROJECT:
ANGLICAN CHURCH GRAMMAR SCHOOL
VIKING CAFE & PREP SCHOOL GLAS

OAKLANDS PARADE, EAST BRISBANE

C1	CONSTRUCTION	08/09/2020
REV:	DESCRIPTION:	DATE:

DRAWING: ELECTRICAL SERVICES VIKING CAFE CONCEALED SPACE SMOKE DETECTORS	PROJECT NO: C2083a	DRAWING NO: E19	REVISION: C1
SCALE: 1:100	AT A1		