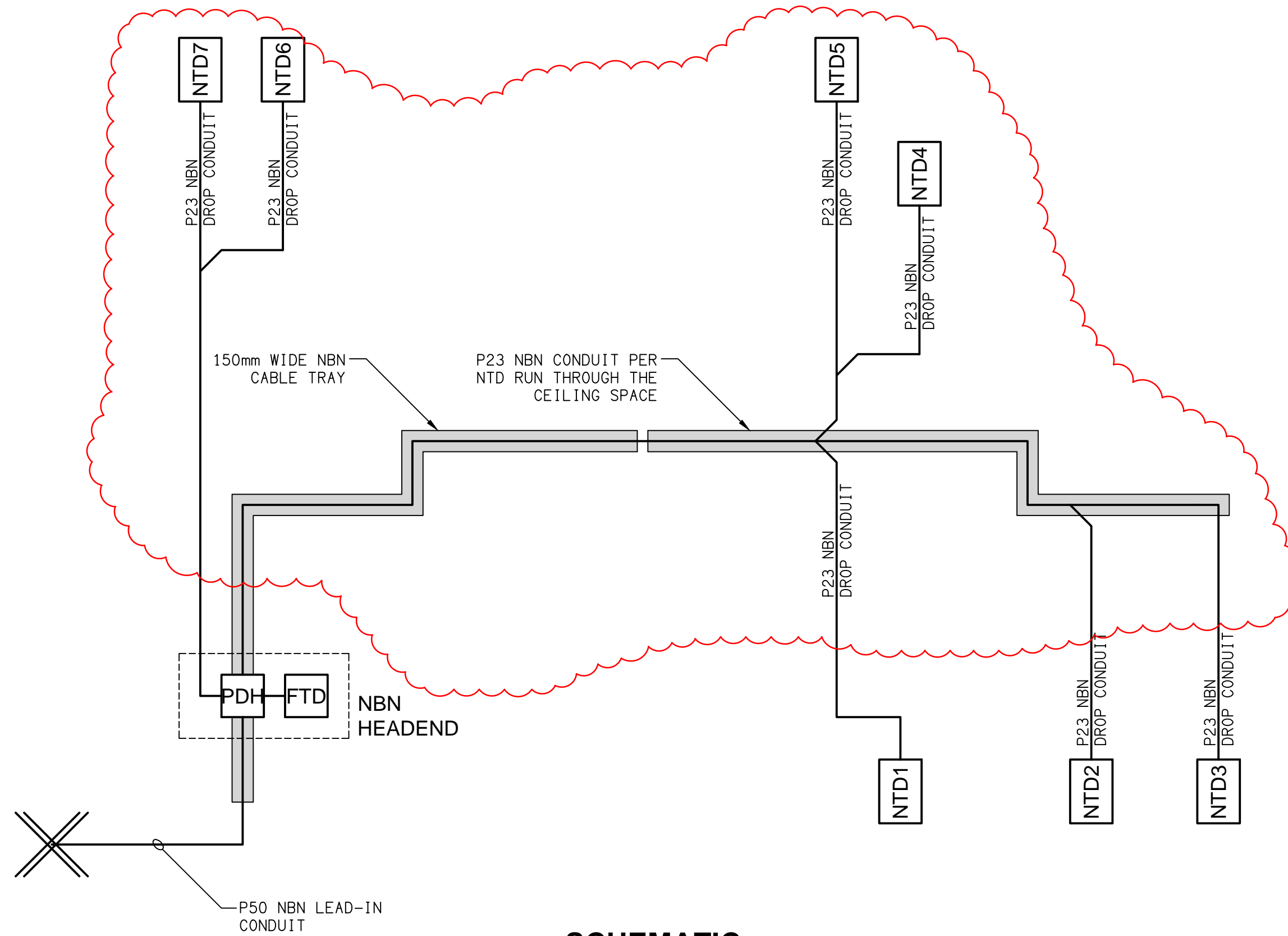


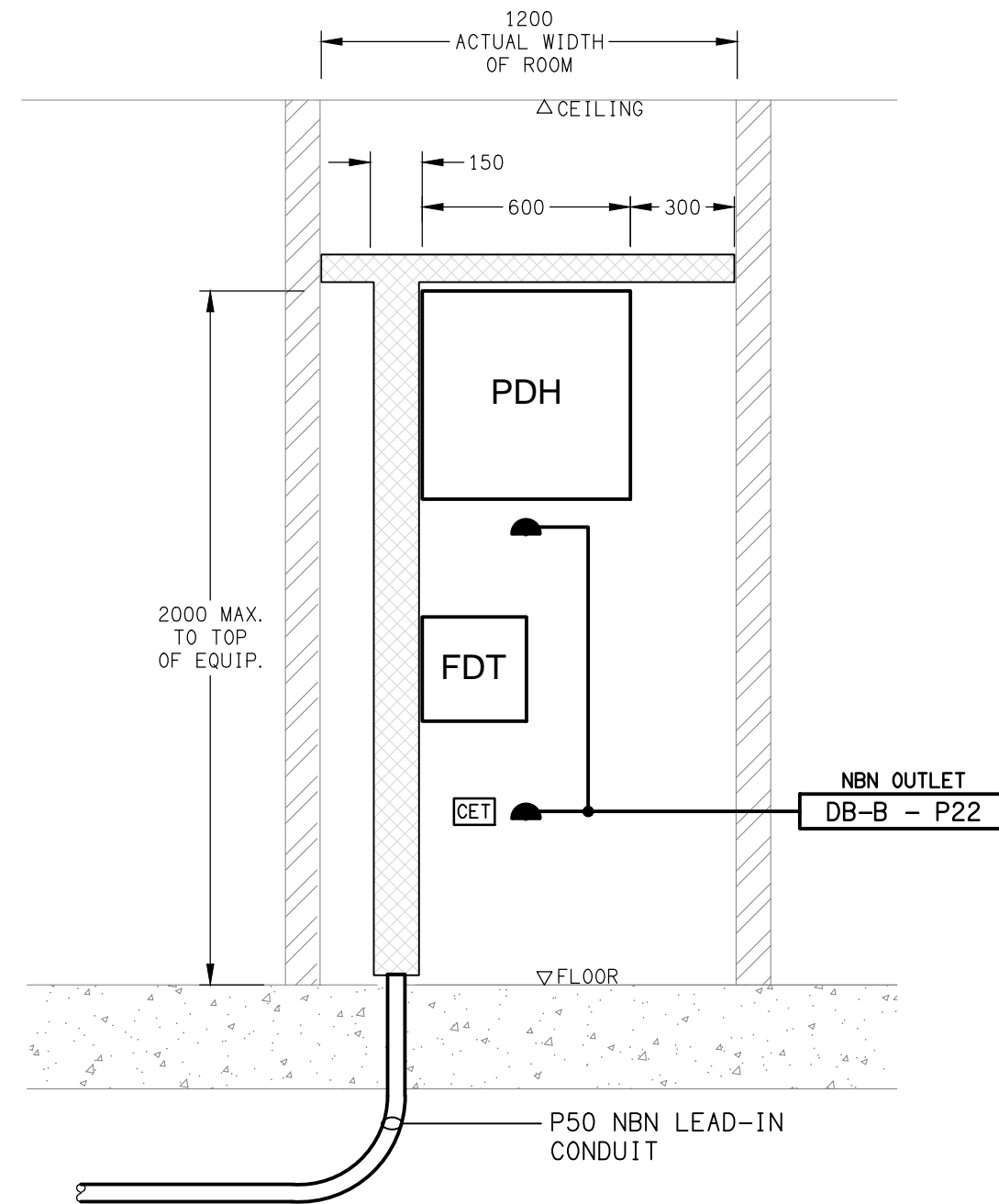
**NOTE:**

TYPICAL FOR ALL NBN P23 DROP CONDUITS.  
DROP DOWN THROUGH THE WALL CAVITY FROM THE NBN CEILING SPACE CONDUITS TO THE NTD. P23mm NBN INTERNAL DIA RIGID WHITE CONDUIT C/W DRAW STRING FROM THE CABLE TRAY TO THE NTD. MAXIMUM OF 3No. 300mm RADIUS 90 DEGREE BENDS PER CONDUIT RUN. LABEL BOTH ENDS OF ALL CONDUITS AND DRAW STRINGS WITH THE NTD NUMBER.

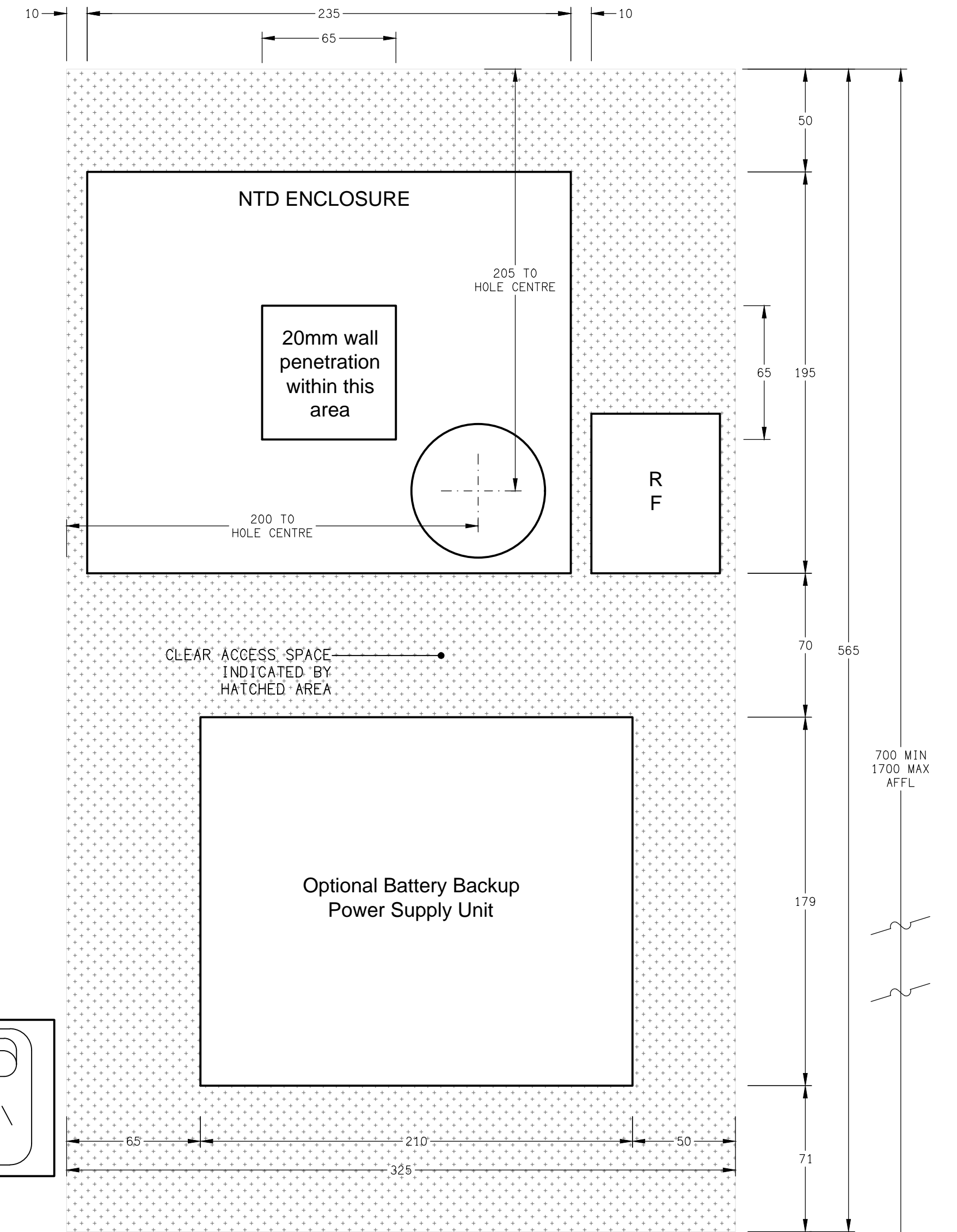
TYPICAL FOR ALL NBN P23 CEILING SPACE CONDUITS.  
FOR EACH NTD PROVIDE A DEDICATED NBN COMPLIANT P23 CONDUIT RUN THROUGH THE CEILING SPACE FROM THE ACCESSIBLE POSITION AT EACH END. PROVIDE THE P23mm CONDUIT WITH INTERNAL DIA RIGID WHITE CONDUIT C/W DRAW STRING CONNECTING EACH END. MAXIMUM OF 3No. 300mm RADIUS 90 DEGREE BENDS PER CONDUIT RUN. LABEL BOTH ENDS OF ALL CONDUITS AND DRAW STRINGS WITH THE NTD NUMBER.



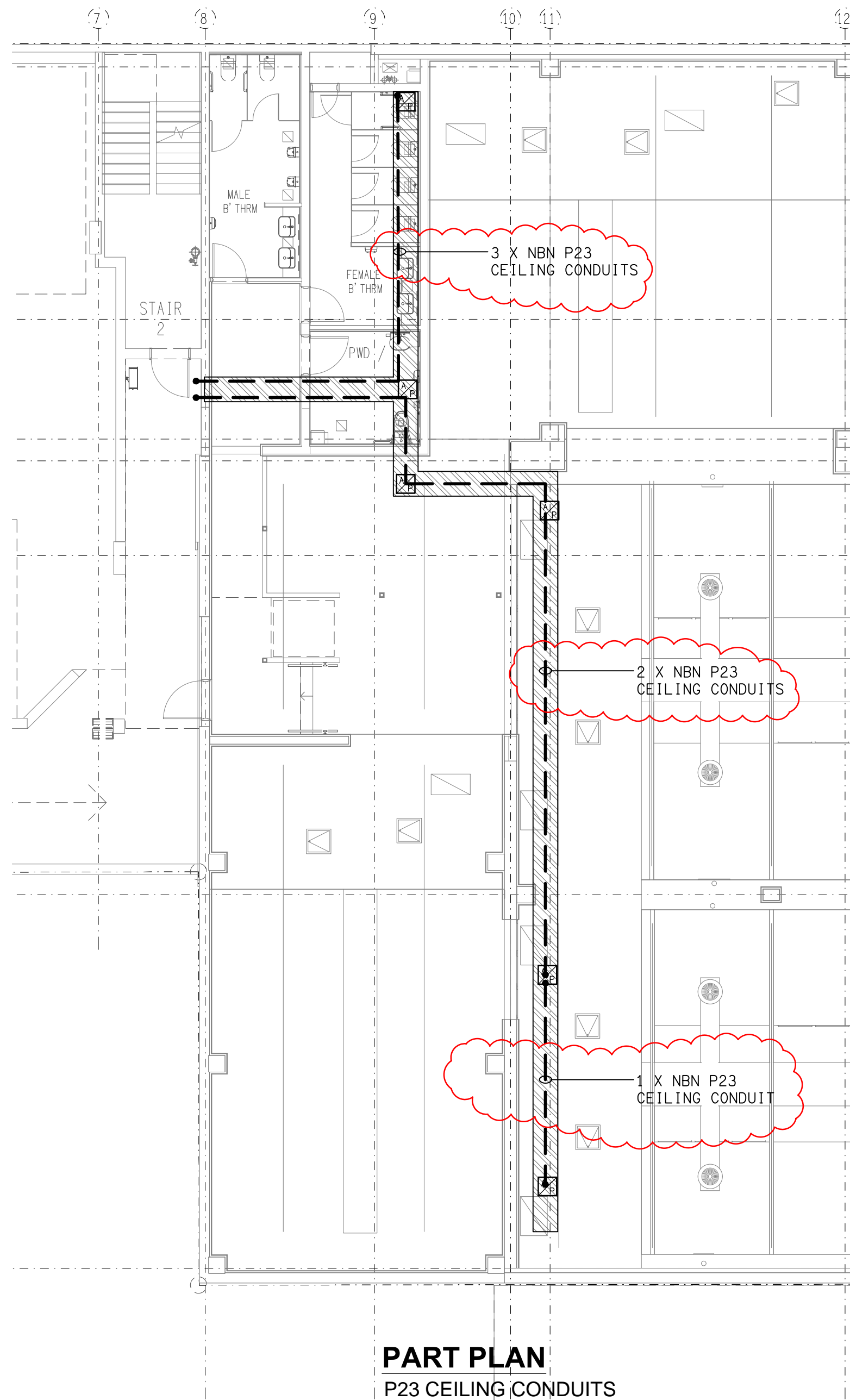
**SCHEMATIC**  
NBN CONFIGURATION  
NOT TO SCALE



**DETAIL A**  
NBN HEADEND WALL ELEVATION VIEW  
NOT TO SCALE



**DETAIL B**  
NTD ARRANGEMENTS FRONT VIEW  
NOT TO SCALE



**PART PLAN**  
P23 CEILING CONDUITS  
1: 100

ELECTRICAL DESIGN GROUP BRISBANE  
PTY LTD  
ACN 092 710 793  
TRADING AS:  
ELECTRICAL DESIGN GROUP

THE COPYRIGHT OF THIS DRAWING  
REMAINS THE PROPERTY OF THE  
ELECTRICAL DESIGN GROUP.  
USE FIGURED DIMENSIONS  
IN PREFERENCE TO SCALE.  
ALL DIMENSIONS TO BE  
VERIFIED ONSITE.

**ELECTRICAL DESIGN GROUP**  
ELECTRICAL BUILDING SERVICES CONSULTANTS  
BRISBANE GOLD COAST

P.O.Box 15, Sherwood Q.4075  
Phone: (07) 3278 4375  
Email: brisbane@edg.net.au  
Web: www.edg.net.au

PROJECT:  
357 LOGAN ROAD, STONES CORNER

C	TENDER	11/10/2021
REV:	DESCRIPTION:	DATE:

DRAWING:  
**ELECTRICAL SERVICES**  
**NBN DETAILS & SCHEMATICS**

SCALE: AS SHOWN	AT A1	PROJECT NO: <b>C2387a</b>	DRAWING NO: <b>E10</b>	REVISION: <b>C</b>
--------------------	-------	------------------------------	---------------------------	-----------------------