



ELECTRICAL DESIGN GROUP

ELECTRICAL BUILDING SERVICES CONSULTANTS

P.O. Box 15, SHERWOOD Q. 4075

Phone: (07) 3278 4375

Website: www.edg.net.au Email: brisbane@edg.net.au

C2975a - KINGS CHRISTIAN COLLEGE - PIMPAMA, JUNIOR RESOURCE BUILDING PIM15 C2975a-0001(C).xls

ELECTRICAL SERVICES CONTRACT DOCUMENT SCHEDULE

REVISION C - 08 DECEMBER 2023

ISSUING INFORMATION				DATE OF ISSUE							
	DAY	21	16	08							
	MONTH	08	10	12							
	YEAR	23	23	23							
	REASON FOR ISSUE	P	T	C							
A = APPROVAL C = CONSTRUCTION N = COORDINATION				P = PRELIMINARY T = TENDER							

DISTRIBUTION				NUMBER OF COPIES							
WWW.EDG.NET.AU				1E	1E	1E					
BURLING BROWN ARCHITECTS				1E	1E	1E					
KINGS CHRISTIAN COLLEGE				1E	1E	1E					
P = PRINT T = TRACING D = DISC				E = EMAIL F = FAX							

DOCUMENTS		REVISION									
C2975a-E01.dwg	LEGEND & DETAILS	A	B	C							
C2975a-E02.dwg	SITE PLAN	A	B	C							
C2975a-E03.dwg	GROUND LEVEL PLANS	A	B	C							
C2975a-E04.dwg	LEVEL 1 PLANS	A	B	C							
C2975a-E05.dwg	NOTES	A	B	C							
C2975a-E06.dwg	SCHEMATICS	A	B	C							
C2975a-0001.xls	CONTRACT DOCUMENT SCHEDULE	A	B	C							
C2975a-0002.xls	EQUIPMENT SCHEDULE		A								
C2975a-0004.xls	DISTRIBUTION BOARD DB-15 SCHEDULE		A								
C2975a-0001.zip	FITTING & OUTLET DATASHEETS		A								



ELECTRICAL DESIGN GROUP

ELECTRICAL BUILDING SERVICES CONSULTANTS

P.O. Box 15, SHERWOOD Q. 4075

Phone: (07) 3278 4375

Website: www.edg.net.au Email: brisbane@edg.net.au

C2975a - KINGS CHRISTIAN COLLEGE - PIMPAMA, JUNIOR RESOURCE BUILDING PIM15

C2975a-0002(A).xls

ELECTRICAL EQUIPMENT SCHEDULE

REVISION A - 16 OCTOBER 2023

THE EQUIPMENT SUPPLIER CONTACT DETAILS MAY BE AVAILABLE ON THE EDG WEBSITE VIA THE FOLLOWING LINK
www.edg.net.au/links.html

TYPE	LAMPS	DESCRIPTION	COLOUR / ACCESSORY	CATALOGUE No	REV
L1	40W 4000K LED	600 X 600 LAY IN FLAT PLATE LED FITTING C/W REMOTE DRIVER AND RECESSED PB KIT	WHITE TRIM	GAMMA ILLUMINATION PHANTOM 600X600 88 SERIES C/W RECESS KIT	A
L2	HV9722-IP20-64-4K - 4.8W 24V DC IP20 LED STRIP 4000K	2400 LONG STAINLESS STEEL WIRE SUSPENDED EXTRUSION C/W INTEGRAL DRIVER AND OPAL DIFFUSER CONFIRM THE SUSPENSION HEIGH ON SITE WITH THE ARCHITECT	SILVER	HAVIT HV9693-6070	A
L3	8W 4000K LED	RECESSED 47 DEG BEAM DOWNLIGHT C/W REMOTE DRIVER	WHITE TRIM	GAMMA ILLUMINATION MYLO 1004-WFL-4K-8W	A
L4	22W 4000K LED	RECESSED 52 DEG BEAM DOWNLIGHT C/W REMOTE DRIVER	WHITE TRIM	GAMMA ILLUMINATION COBALT 1402-4K-22W	A
L5	22W 4000K LED	RECESSED 52 DEG BEAM DOWNLIGHT C/W REMOTE DRIVER	WHITE TRIM	GAMMA ILLUMINATION COBALT 1402-4K-22W	A
L6	HV9722-IP20-64-4K - 4.8W 24V DC IP20 LED STRIP 4000K	1200 LONG STAINLESS STEEL WIRE SUSPENDED EXTRUSION C/W INTEGRAL DRIVER AND OPAL DIFFUSER CONFIRM THE SUSPENSION HEIGH ON SITE WITH THE ARCHITECT	SILVER	HAVIT HV9693-6070	A
L7	HV9722-IP20-64-4K - 4.8W 24V DC IP20 LED STRIP 4000K	800 LONG STAINLESS STEEL WIRE SUSPENDED EXTRUSION C/W INTEGRAL DRIVER AND OPAL DIFFUSER CONFIRM THE SUSPENSION HEIGH ON SITE WITH THE ARCHITECT	SILVER	HAVIT HV9693-6070	A
L8	24W LED 4000K	600 LONG SURFACE MOUNTED IP65 DIFFUSED BATTEN C/W INTEGRAL ELECTRONIC CONTROL GEAR AND PRESENCE DETECTION SENSOR	LIGHT GREY	GAMMA ILLUMINATION STORM 1510-MS	A
L9	120W 4000K LED	ADJUSTABLE IP65 65X65 DEG FLOOD C/W INTEGRAL DRIVER MOUNTED ON A TAPERED 9M GALVANIZED POLE. CIRCUIT AND CONTROL FROM THE LOCAL BUILDINGS DISTRIBUTION BOARD	SILVER	GAMMA ILLUMINATION ALTUS 1346-4K-120W	A
L10	120W 4000K LED	HIGH LEVEL WALL MOUNTED ADJUSTABLE IP65 65X65 DEG FLOOD C/W INTEGRAL DRIVER	SILVER	GAMMA ILLUMINATION ALTUS 1346-4K-120W	A
L11	90W 4000K LED	MID LEVEL WALL MOUNTED ADJUSTABLE IP65 65X65 DEG FLOOD C/W INTEGRAL DRIVE	SILVER	GAMMA ILLUMINATION ALTUS 1345-4K-90W	A
L12	HV9722-IP20-64-4K - 4.8W 24V DC IP20 LED STRIP 4000K	3200 LONG STAINLESS STEEL WIRE SUSPENDED EXTRUSION C/W INTEGRAL DRIVER AND OPAL DIFFUSER CONFIRM THE SUSPENSION HEIGH ON SITE WITH THE ARCHITECT	SILVER	HAVIT HV9693-6070	A
L13	HV9722-IP20-64-4K - 4.8W 24V DC IP20 LED STRIP 4000K	1800 LONG STAINLESS STEEL WIRE SUSPENDED EXTRUSION C/W INTEGRAL DRIVER AND OPAL DIFFUSER CONFIRM THE SUSPENSION HEIGH ON SITE WITH THE ARCHITECT	SILVER	HAVIT HV9693-6070	A

C2975a-0002(A).xls

Pages inc. any attach. 1 of 4



ELECTRICAL DESIGN GROUP

ELECTRICAL BUILDING SERVICES CONSULTANTS

P.O. Box 15, SHERWOOD Q. 4075

Phone: (07) 3278 4375

Website: www.edg.net.au Email: brisbane@edg.net.au

C2975a - KINGS CHRISTIAN COLLEGE - PIMPAMA, JUNIOR RESOURCE BUILDING PIM15

C2975a-0002(A).xls

ELECTRICAL EQUIPMENT SCHEDULE

REVISION A - 16 OCTOBER 2023

THE EQUIPMENT SUPPLIER CONTACT DETAILS MAY BE AVAILABLE ON THE EDG WEBSITE VIA THE FOLLOWING LINK
www.edg.net.au/links.html

TYPE	LAMPS	DESCRIPTION	COLOUR / ACCESSORY	CATALOGUE No	REV
L14	HV9722-IP20-64-4K - 4.8W 24V DC IP20 LED STRIP 4000K	2700 LONG STAINLESS STEEL WIRE SUSPENDED EXTRUSION C/W INTEGRAL DRIVER AND OPAL DIFFUSER CONFIRM THE SUSPENSION HEIGH ON SITE WITH THE ARCHITECT	SILVER	HAVIT HV9693-6070	A
L15	HV9722-IP20-64-4K - 4.8W 24V DC IP20 LED STRIP 4000K	4300 LONG STAINLESS STEEL WIRE SUSPENDED EXTRUSION C/W INTEGRAL DRIVER AND OPAL DIFFUSER CONFIRM THE SUSPENSION HEIGH ON SITE WITH THE ARCHITECT	SILVER	HAVIT HV9693-6070	A
E1	LED	EMERGENCY LIGHT: RECESSED NON-MAINTAINED EMERGENCY LIGHT. AS2293 CLASSIFICATION C0-D40 - C90-D40.	WHITE	STANILITE SF1LEDP	A
EX	LED	EXIT LIGHT: MAINTAINED 24M VIEWING DISTANCE EXIT LIGHT C/W DIFFUSERS & DIRECTIONAL ARROWS AS SHOWN. CEILING OR WALL MOUNT BETWEEN 2100mm & 2700mm AFFL IF THERE IS NO VERTICAL SURFACE TO MOUNT THE FITTING ON WITHIN THIS RANGE CONFIRM THE MOUNTING HEIGHT WITH THE ENGINEER. AS2293 CLASSIFICATION C0-D8 - C90-E3.2.	WHITE	STANILITE PQFLEDP	A
EMERGENCY PACK		LIGHT FITTINGS THAT ARE DESIGNATED AS BEING PROVIDED WITH AN EMERGENCY PACK ARE TO BE PROVIDED WITH AN INTEGRAL AS2293 EMERGENCY PACK. THE FITTINGS ARE TO BE NON MAINTAINED WITH ALL LAMPS SWITCHED AS PER THE LIGHTING CONTROL FOR THAT SPACE UNLESS NOTED OTHERWISE. REFER TO THE SPECIFICATION FOR FURTHER DETAILS OF THE CONFIGURATION AND SWITCHING OF EMERGENCY LIGHTS.			A
ONE-WAY LIGHT SWITCH		ONE-WAY LIGHT SWITCH C/W CIRCUIT IDENTIFICATION ON THE FACEPLATE BEHIND THE SURROUND MOUNTED AT 1000mm AFFL UNLESS NOTED OTHERWISE.	WHITE	CLIPSAL C2000 SERIES 30USM	A
TWO-WAY LIGHT SWITCH		TWO-WAY LIGHT SWITCH C/W CIRCUIT IDENTIFICATION ON THE FACEPLATE BEHIND THE SURROUND MOUNTED AT 1000mm AFFL UNLESS NOTED OTHERWISE.	WHITE	CLIPSAL C2000 SERIES 30USM	A
PROXIMITY DETECTOR SWITCH (PD)		ADJUSTABLE FLUSH RECESSED 360 DEGREE PIR PRESENCE DETECTOR TO OPERATE THE ASSOCIATED LIGHTS FOR A PRE-SET AMOUNT OF TIME. ADJUST THE TIME AND SENSITIVITY ON SITE AS DIRECTED BY THE ENGINEER. SUBMIT DETAILS OF THE MOVEMENT DETECTOR SWITCH FOR APPROVAL PRIOR TO ORDERING	WHITE	CLIPSAL	A
SINGLE POWER OUTLET		SINGLE POWER OUTLET C/W CIRCUIT IDENTIFICATION ON THE FACEPLATE BEHIND THE SURROUND. MOUNT AT 300mm AFFL U.N.O. RATING 10A U.N.O.	WHITE	CLIPSAL C2000 SERIES	A
DOUBLE POWER OUTLET		DOUBLE POWER OUTLET C/W CIRCUIT IDENTIFICATION ON THE FACEPLATE BEHIND THE SURROUND. MOUNT AT 300mm AFFL U.N.O. RATING 10A U.N.O.	WHITE	CLIPSAL C2000 SERIES	A
DRINK FOUNTAIN OUTLET (DF)		IP54 WEATHERPROOF SINGLE 10 AMP POWER OUTLET C/W COVER FLAP OVER SOCKET MOUNTED WITHIN THE DRINK FOUNTAIN HOUSING.	-	CLIPSAL WSCF227F	A



ELECTRICAL DESIGN GROUP

ELECTRICAL BUILDING SERVICES CONSULTANTS

P.O. Box 15, SHERWOOD Q. 4075

Phone: (07) 3278 4375

Website: www.edg.net.au Email: brisbane@edg.net.au

C2975a - KINGS CHRISTIAN COLLEGE - PIMPAMA, JUNIOR RESOURCE BUILDING PIM15

C2975a-0002(A).xls

ELECTRICAL EQUIPMENT SCHEDULE

REVISION A - 16 OCTOBER 2023

THE EQUIPMENT SUPPLIER CONTACT DETAILS MAY BE AVAILABLE ON THE EDG WEBSITE VIA THE FOLLOWING LINK
www.edg.net.au/links.html

TYPE	LAMPS	DESCRIPTION	COLOUR / ACCESSORY	CATALOGUE No	REV
WEATHERPROOF POWER OUTLET (WP)		IP54 WEATHERPROOF SINGLE / DOUBLE POWER OUTLET AS NOTED ON DRAWING C/W COVER FLAP OVER SOCKET. MOUNT AT MINIMUM 1100mm AFFL U.N.O. RATING 10A U.N.O.	-	CLIPSAL WSCF227F	A
IP56 WEATHERPROOF POWER OUTLET (WP)		IP56 WEATHERPROOF SINGLE / DOUBLE POWER OUTLET AS NOTED ON DRAWING. MOUNT AT MINIMUM 1100mm AFFL U.N.O. RATING 10A U.N.O.	-	CLIPSAL "56 SERIES"	A
RECESS KIT (RK)		VERTICALLY ORIENTATED WALL BOX TO ALLOW THE OUTLET TO BE RECESSED WITHIN THE WALL CAVITY	WHITE	REPELEC RECWP1WH	A
SPECIAL PURPOSE POWER OUTLET		SPECIAL PURPOSE POWER OUTLET. MOUNT AT 300mm AFFL U.N.O. RATING 10A U.N.O. SIZE AND TYPE AS NOTED	-	-	A
HAND DRYER CONNECTION (HD)		THE ELECTRICAL SUB CONTRACTOR IS TO TAKE POSSESSION OF THE HAND DRYER AND INSTALL IT WITH 20A ISOLATING SWITCH WALL MOUNTED CONNECTED TO THE HAND DRYER UNIT AS PER DETAIL. PROVIDE CIRCUIT IDENTIFICATION ON THE FACEPLATE BEHIND THE SURROUND	WHITE	CLIPSAL "C2000 SERIES"	A
SINGLE-PHASE ISOLATOR		SINGLE-PHASE WEATHERPROOF ISOLATOR. MOUNT AT 1350mm AFFL U.N.O. RATING 20A U.N.O. CONNECT TO EQUIPMENT VIA FLEXIBLE CONDUIT.	-	CLIPSAL WHT20	A
THREE-PHASE ISOLATOR		THREE-PHASE WEATHERPROOF ISOLATOR. MOUNT AT 1350mm AFFL U.N.O. RATING 20A U.N.O. CONNECT TO EQUIPMENT VIA FLEXIBLE CONDUIT. "RSD" DENOTES ROLLER SHUTTER DOOR SUPPLY - COORDINATE LOCATION ONSITE WITH MOTOR.	-	CLIPSAL WHT35	A
MSB		EXISTING MAIN SWITCHBOARD TO REMAIN AS IS			A
MDB		EXISTING MAIN DISTRIBUTION BOARD TO BE PROVIDED WITH A NEW MCCB AS PER THE POWER SCHEMATIC. THE NEW MCCB IS TO MATCH THE EXISTING UPDATE THE LABELLING			A
DB-15		BUILDING 15 MAIN DISTRIBUTION BOARD DB-15 TO BE SUPPLIED FROM THE EXISTING MDB AS PER THE POWER SCHEMATIC PROVIDE DISTRIBUTION BOARD DB-15 AS PER THE POWER SCHEMATICS AND NOTES. PROVIDE A SHOP DRAWING THE ESCUTCHEON IS TO BE HINGED AND SECURED VIA 1/4 TURN LATCHES. ENSURE THE ESCUTCHEON CAN BE OPENED WITHOUT ISOLATING THE POWER.			A
MSSB		NEW MSSB PROVIDED AS PART OF THE MECHANICAL SERVICES SUB CONTRACT. PROVIDE A MCCB IN DB-15 AND SUBMAIN AS PER THE SCHEMATIC.			A
M		SUPPLY AUTHORITY CODE COMPLIANT LV MAXIMUM DEMAND TARIFF METER, TO REMAIN AS IS			A
MFm		PRIVATE METER, TO REMAIN AS IS			A
SECURITY EQUIPMENT		SECURITY EQUIPMENT TO BE PROVIDED BY THE SCHOOL			A



ELECTRICAL DESIGN GROUP

ELECTRICAL BUILDING SERVICES CONSULTANTS

P.O. Box 15, SHERWOOD Q. 4075

Phone: (07) 3278 4375

Website: www.edg.net.au Email: brisbane@edg.net.au

C2975a - KINGS CHRISTIAN COLLEGE - PIMPAMA, JUNIOR RESOURCE BUILDING PIM15

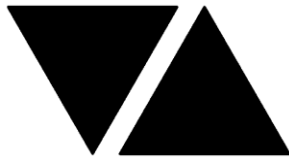
C2975a-0002(A).xls

ELECTRICAL EQUIPMENT SCHEDULE

REVISION A - 16 OCTOBER 2023

THE EQUIPMENT SUPPLIER CONTACT DETAILS MAY BE AVAILABLE ON THE EDG WEBSITE VIA THE FOLLOWING LINK
www.edg.net.au/links.html

TYPE	LAMPS	DESCRIPTION	COLOUR / ACCESSORY	CATALOGUE No	REV
COMMUNICATIONS RACK CR-15		PROVIDE CR-15 AS A FREE STANDING 41 RU MINIMUM 800 DEEP COMMUNICATIONS CONNECTED TO CR-H VIA AN UNDERGROUND LOOSE TUBE GEL FILLED 12 CORE OS2 OPTICAL FIBRE CABLES FULLY TERMINATED WITH SC CONNECTORS. PROVIDE CR-15 WITH ALL NECESSARY PATCH PANELS TO ACCOMMODATED THE NEW COMMUNICATIONS OUTLETS.			A
COMMUNICATIONS OUTLET		RJ45 CAT-6 COMMUNICATIONS OUTLET, CABLED BACK TO A CAT 6 PATCH PANEL IN COMMUNICATIONS RACK CR-11 VIA 4-PAIR CAT-6 UTP CABLE. MOUNT UP TO 3 RJ45 OUTLETS PER MULTI-GANG FACEPLATE WITH SEPARATE PERMANENT LABELLING FOR EACH OUTLET. MOUNT AT 300 AFFL U.N.O	WHITE	CLIPSAL C2000 SERIES	A
PIT P1		EXISTING POWER PIT TO BE MODIFIED TO MATCH THE NEW FINISHED LEVELS. PROVIDE THE PIT WITH A NEW TRAFFICABLE NON SLIP LID.			A
PIT P2		EXISTING POWER PIT TO BE MODIFIED TO MATCH THE NEW FINISHED LEVELS. PROVIDE THE PIT WITH A NEW TRAFFICABLE NON SLIP LID.			A
PIT P3		EXISTING POWER PIT TO BE MODIFIED TO MATCH THE NEW FINISHED LEVELS. PROVIDE THE PIT WITH A NEW TRAFFICABLE NON SLIP LID.			A
PIT C1		EXISTING COMMUNICATIONS PIT TO BE MODIFIED TO MATCH THE NEW FINISHED LEVELS. PROVIDE THE PIT WITH A NEW TRAFFICABLE NON SLIP LID.			A
PIT C2		EXISTING COMMUNICATIONS PIT TO BE MODIFIED TO MATCH THE NEW FINISHED LEVELS. PROVIDE THE PIT WITH A NEW TRAFFICABLE NON SLIP LID.			A
CABLE ACCESS (A1)		PROVIDE A1 AS MULTIPLE WALL MOUNTED FACEPLATES POSITIONED AS PER THE ARCHITECTURAL DETAIL. PROVIDE THE OUTLET CONFIGURATION AND CABLING AS PER THE A1 / A2 FACEPLATE SCHEMATIC. PROVIDE THE GPO AS A CONVENTIONAL GPO CIRCUITED AS SHOWN AND THE RJ45 OUTLETS AS CONVENTIONAL COMMUNICATIONS OUTLETS CABLED TO THE COMMUNICATIONS RACK. PROVIDE THE HDMI PORT AS A FACTORY TERMINATED FEMALE PORT CABLED TO THE A2 HDMI PORT VIA A HDMI 2 CABLE LESS THAN 5M IN LENGTH.	WHITE	CLIPSAL C2000 SERIES	A
CABLE ACCESS (A2)		PROVIDE A2 AS MULTIPLE WALL MOUNTED FACEPLATES POSITIONED AS PER THE ARCHITECTURAL DETAIL. PROVIDE THE OUTLET CONFIGURATION AND CABLING AS PER THE A1 / A2 FACEPLATE SCHEMATIC. PROVIDE THE GPO AS A CONVENTIONAL GPO CIRCUITED AS SHOWN AND THE RJ45 OUTLETS AS CONVENTIONAL COMMUNICATIONS OUTLETS CABLED TO THE COMMUNICATIONS RACK. PROVIDE THE HDMI PORT AS A FACTORY TERMINATED FEMALE PORT CABLED TO THE A1 HDMI PORT VIA A HDMI 2 CABLE LESS THAN 5M IN LENGTH.	WHITE	CLIPSAL C2000 SERIES	A



ELECTRICAL DESIGN GROUP

ELECTRICAL BUILDING SERVICES CONSULTANTS

P.O. Box 15, SHERWOOD Q. 4075

Phone: (07) 3278 4375

Website: www.edg.net.au Email: brisbane@edg.net.au

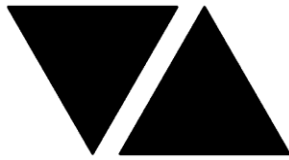
C2975a - KINGS CHRISTIAN COLLEGE - PIMPAMA, JUNIOR RESOURCE BUILDING PIM15

C2975a-0004(A).xls

DISTRIBUTION BOARD DB-15

REVISION A - 16 OCTOBER 2023

							REV
FAULT CURRENT:		6KA		MAIN SWITCH:		250A NON AUTO LOAD BREAK ISOLATOR	A
CHASSIS SIZE:		2 X 60 POLES		SUPPLIED FROM:		MDB	A
CHASSIS RATING:		250A		SUPPLY CABLE:		1C 95	A
PHASES:		3					A
PROVIDE THE DB WITH A FULL WIDTH EMPTY DIN RAIL TO ACCOMMODATE FUTURE CONTACTORS AND CONTROLS. ACCURATELY LABEL EACH CIRCUIT BREAKER WITH THE USE AND THE POSITION. PROVIDE THE DB WITH AN AS2293 EMERGENCY LIGHT TESTING FACILITY. PROVIDE DB-15 WITH A 125A MCCB TO SUPPLY THE MSSB AS PER THE POWER SCHEMATIC.							A
CIRC	PH	CIRCUIT BREAKER (amps)	CONTROL EQUIPMENT	CABLE SIZE (mm ²)	LOCATION	CIRCUIT USE	
P1	1	20	RCBO	2.5	EXTERNAL	GPO	A
P2	1	20	RCBO	2.5	EXTERNAL	DF	A
P3	1	20	RCBO	2.5	EXTERNAL	DF	A
P4	1	20	RCBO	2.5	EXTERNAL	15A	A
P5	1	20	RCBO	2.5	EXTERNAL	15A	A
P6	1	20	RCBO	2.5	EXTERNAL	15A	A
P7	3	40	RCBO	6.0	EXTERNAL	40A OUTLET	A
P8	1	20	RCBO	2.5	EXTERNAL	15A	A
P9	1	20	RCBO	2.5	GROUND	GLA 1	A
P10	1	20	RCBO	2.5	GROUND	GLA 2	A
P11	1	20	RCBO	2.5	GROUND	GLA 3	A
P12	1	20	RCBO	2.5	GROUND	GLA 4	A
P13	1	20	RCBO	2.5	GROUND	GLA 5	A
P14	1	20	RCBO	2.5	GROUND	GLA 6	A
P15	1	20	RCBO	2.5	GROUND	GLA 7	A
P16	1	20	RCBO	2.5	GROUND	CIRCULATION	A
P17	1	20	RCBO	2.5	GROUND	CIRCULATION	A
P18	1	20	RCBO	2.5	GROUND	HD	A
P19	1	20	RCBO	2.5	GROUND	AMENITY	A
P20	1	20	RCBO	2.5	GROUND	HD	A
P21	1	20	RCBO	2.5	GROUND	HD	A
P22	3	20	RCBO	2.5	GROUND	HWS	A
P23	1	20	RCBO	2.5	LEVEL 1	GLA 8	A
P24	1	20	RCBO	2.5	LEVEL 1	GLA 9	A
P25	1	20	RCBO	2.5	LEVEL 1	ART	A
P26	1	20	RCBO	2.5	LEVEL 1	ART	A
P27	1	20	RCBO	2.5	LEVEL 1	GLA 12	A
P28	1	20	RCBO	2.5	LEVEL 1	GLA 13	A
P29	1	20	RCBO	2.5	LEVEL 1	GLA 14	A
P30	1	20	RCBO	2.5	LEVEL 1	CIRCULATION	A
P31	1	20	RCBO	2.5	LEVEL 1	CIRCULATION	A
P32	1	20	RCBO	2.5	LEVEL 1	CR 15	A
P33	1	20	RCBO	2.5	LEVEL 1	SECURITY	A
P34	1	20	RCBO	2.5	LEVEL 1	HD	A
P35	1	20	RCBO	2.5	LEVEL 1	AMENITY	A
P36	1	20	RCBO	2.5	LEVEL 1	HD	A
P37	1	20	RCBO	2.5	LEVEL 1	HD	A
P38	3	20	RCBO	2.5	LEVEL 1	HWS	A



ELECTRICAL DESIGN GROUP

ELECTRICAL BUILDING SERVICES CONSULTANTS

P.O. Box 15, SHERWOOD Q. 4075

Phone: (07) 3278 4375

Website: www.edg.net.au Email: brisbane@edg.net.au

C2975a - KINGS CHRISTIAN COLLEGE - PIMPAMA, JUNIOR RESOURCE BUILDING PIM15

C2975a-0004(A).xls

DISTRIBUTION BOARD DB-15

REVISION A - 16 OCTOBER 2023

							REV
FAULT CURRENT: 6KA							A
MAIN SWITCH: 250A NON AUTO LOAD BREAK ISOLATOR							A
CHASSIS SIZE: 2 X 60 POLES							A
SUPPLIED FROM: MDB							A
CHASSIS RATING: 250A							A
SUPPLY CABLE: 1C 95							A
PHASES: 3							A
PROVIDE THE DB WITH A FULL WIDTH EMPTY DIN RAIL TO ACCOMMODATE FUTURE CONTACTORS AND CONTROLS. ACCURATELY LABEL EACH CIRCUIT BREAKER WITH THE USE AND THE POSITION. PROVIDE THE DB WITH AN AS2293 EMERGENCY LIGHT TESTING FACILITY. PROVIDE DB-15 WITH A 125A MCCB TO SUPPLY THE MSSB AS PER THE POWER SCHEMATIC.							A
CIRC	PH	CIRCUIT BREAKER (amps)	CONTROL EQUIPMENT	CABLE SIZE (mm ²)	LOCATION	CIRCUIT USE	
L1	1	20	RCD PE ON DUSK OFF DAWN	2.5	EXTERNAL	SECURITY LIGHTS	A
L2	1	20	RCD	2.5	GROUND	GLAS 1,2 & 3	A
L3	1	20	RCD	2.5	GROUND	GLAS 4 & 5	A
L4	1	20	RCD	2.5	GROUND	GLA 6	A
L5	1	20	RCD	2.5	GROUND	GLA 7	A
L6	1	20	RCD	2.5	GROUND	CIRCULATION	A
L7	1	20	RCD	2.5	GROUND	CIRCULATION	A
L8	1	20	RCD	2.5	GROUND	MALE	A
L9	1	20	RCD	2.5	GROUND	FEMALE	A
L10	1	20	RCD	2.5	EXTERNAL	LIGHTS	A
L11	1	20	RCD	2.5	EXTERNAL	LIGHTS	A
L12	1	20	RCD PE ON DUSK TC OFF 10.00PM	2.5	EXTERNAL	FLOOD LIGHTS	A
L13	1	20	RCD	2.5	LEVEL 1	GLA 8	A
L14	1	20	RCD	2.5	LEVEL 1	GLA 9	A
L15	1	20	RCD	2.5	LEVEL 1	ART	A
L16	1	20	RCD	2.5	LEVEL 1	GLA 12	A
L17	1	20	RCD	2.5	LEVEL 1	CIRCULATION	A
L18	1	20	RCD	2.5	LEVEL 1	CIRCULATION	A
L19	1	20	RCD	2.5	LEVEL 1	GLAS 13 & 14	A
L20	1	20	RCD	2.5	LEVEL 1	MALE	A
L21	1	20	RCD	2.5	LEVEL 1	FEMALE	A

LEGEND

	ELECTRICAL SERVICES SWITCHBOARD.
	SWITCHBOARD / CONTROL PANEL NOT PROVIDED AS PART OF THE ELECTRICAL SUBCONTRACT.
	SINGLE POWER OUTLET.
	DOUBLE POWER OUTLET.
	DRINK FOUNTAIN POWER OUTLET MOUNTED WITHIN HOUSING.
	SPECIAL PURPOSE POWER OUTLET.
	CABLE ACCESS, TYPE AS NOTED.
	SINGLE PHASE ISOLATOR.
	THREE PHASE ISOLATOR.
	CONDUIT ROUTE.
	x DENOTES CONDUIT TYPE.
	ELECTRICAL PIT, TYPE AS NOTED.
	HAND DRYER CONNECTION.
	LIGHTING PRESENCE DETECTOR SWITCH.
	ONE-WAY LIGHT SWITCH.
	TWO-WAY LIGHT SWITCH.
	CIRCUIT LINE.
	SWITCH LINE.
	POWER CIRCUIT DESIGNATION. DENOTES DB AND CIRCUIT.
	ELECTRICAL EQUIPMENT AS NOTED.
	OUTLET MOUNTED WITHIN RECESS KIT.
	RJ45 COMMUNICATIONS OUTLET.
	PRIVATE METER.
	MULTI FUNCTION METER
	FUSE.
	SINGLE PHASE.
	THREE PHASE.
	CURRENT TRANSFORMER C/W REMOVABLE LINK.
	FUSE LINK.
	COMBINED FUSE SWITCH.
	CIRCUIT BREAKER.
	ISOLATOR.
	RESIDUAL CURRENT DEVICE.
	CONTACTOR – NORMALLY OPEN.
	CONTACTOR – NORMALLY CLOSED.

LEGEND

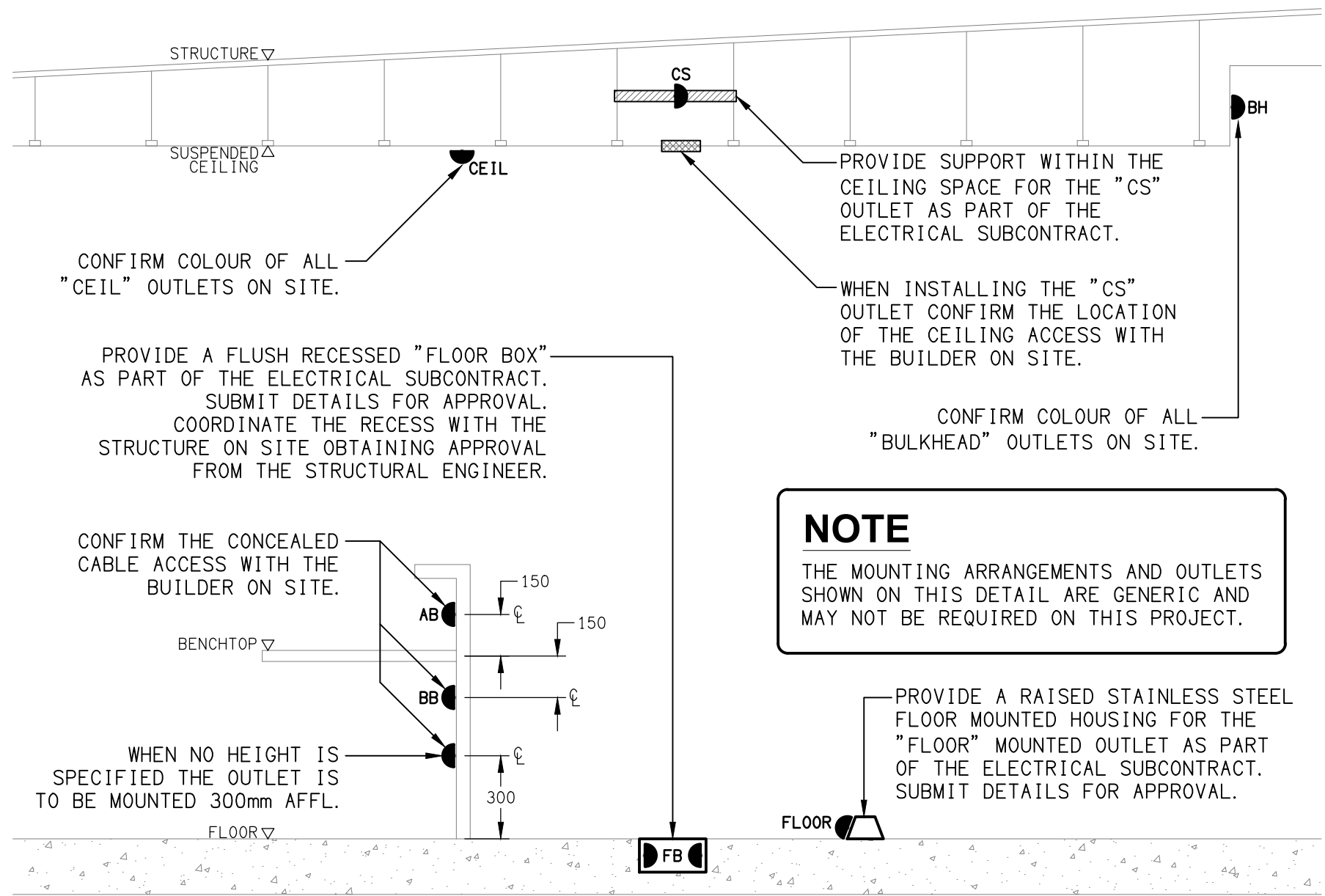
	REFER TO DETAIL NOTED FOR THE AREA SHOWN HATCHED. ADDITIONAL OUTLETS & FITTINGS MAY BE SHOWN ON DETAIL.
	E1: RECESSED GENERAL LED EMERGENCY LIGHT.
	EX: EMERGENCY LED EXIT LIGHT.
	Lx: LIGHT FITTING C/W NON-MAINTAINED EMERGENCY BATTERY PACK. TYPE AS NOTED.
	L1: 40W 600 x 600 SURFACE LED FLAT PANEL.
	L2: 2400 LONG SUSPENDED 50 x 50 LED EXTRUSION.
	L3: RECESSED AMENITY DOWNLIGHT.
	L4: RECESSED CORRIDOR DOWNLIGHT.
	L5: RECESSED EXTERNAL DOWNLIGHT.
	L6: 1200 LONG SUSPENDED 50 x 50 LED EXTRUSION.
	L7: 800 LONG SUSPENDED 50 x 50 LED EXTRUSION.
	L8: 600 LONG BATTEN C/W INTEGRAL SENSOR.
	L9: CARPARK FLOOD LIGHT MOUNTED ON A 9m POLE.
	L10: HIGH LEVEL FLOOD LIGHT.
	L11: MID LEVEL FLOOD LIGHT.
	L12: 3200 LONG SUSPENDED 50 x 50 LED EXTRUSION.
	L13: 1800 LONG SUSPENDED 50 x 50 LED EXTRUSION.
	L14: 2700 LONG SUSPENDED 50 x 50 LED EXTRUSION.
	L15: 4300 LONG SUSPENDED 50 x 50 LED EXTRUSION.

NOTE

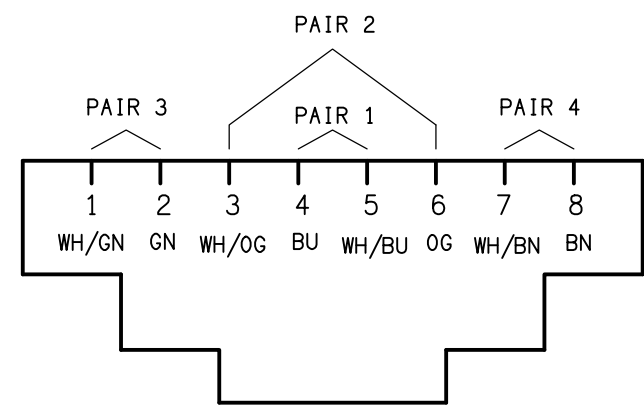
ALL ELECTRICAL PENETRATIONS THROUGH THE ROOF SHEETING ARE TO BE IN LINE WITH THE STRUCTURAL OR MECHANICAL SERVICES PENETRATIONS TO AVOID DEDICATED FLASHINGS FOR THE ELECTRICAL SERVICES.

EQUIPMENT:

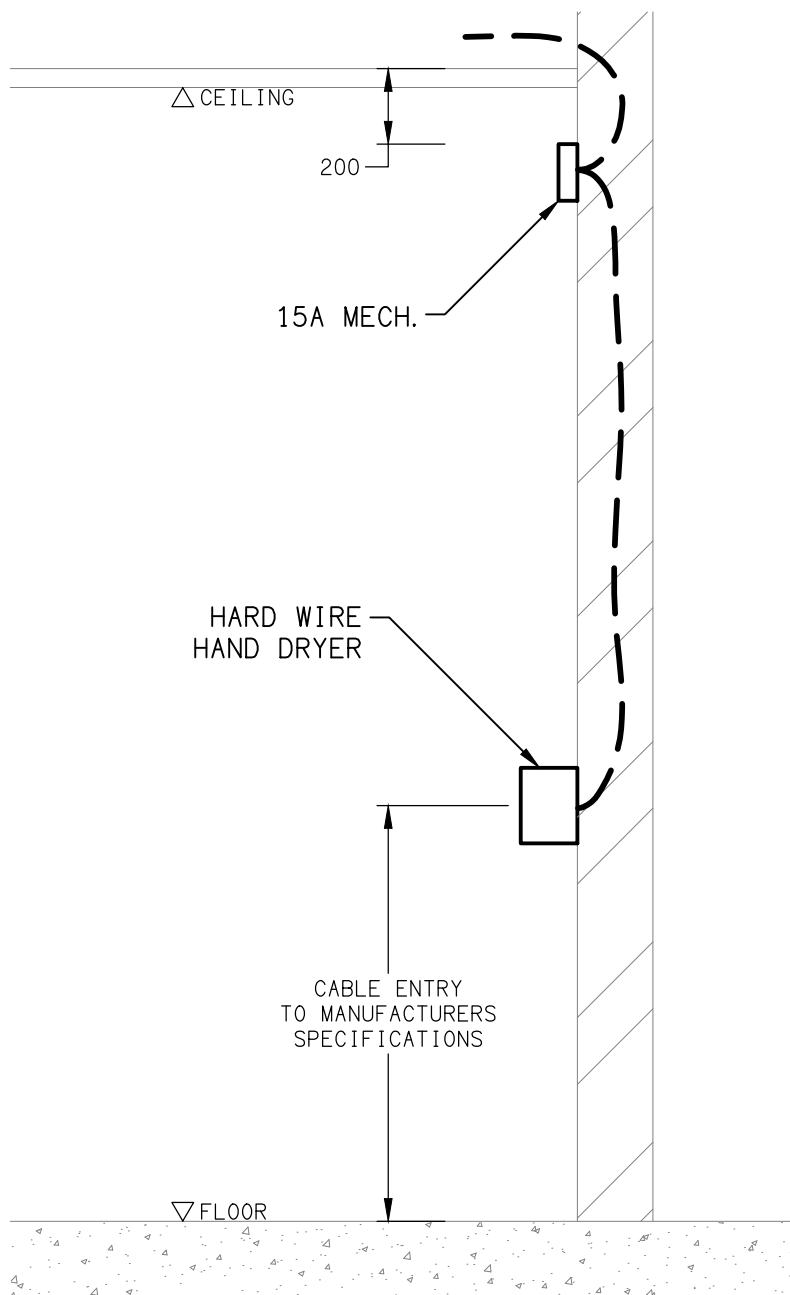
- TEST – TEST PUSH BUTTON MOUNTED ON THE DISTRIBUTION BOARD ESCUTCHEON.
RESET – RESET PUSH BUTTON MOUNTED ON THE DISTRIBUTION BOARD ESCUTCHEON.
LAMP – AMBER TEST INDICATING LAMP MOUNTED ON THE DISTRIBUTION BOARD ESCUTCHEON.
Ta – ADJUSTABLE 0-3 HOUR TIMED RELAY.
Tb – 15 MINUTE RUN-ON TIMER TO OPERATE UPON THE RETURN OF MAINS POWER.
Cx – CONTACTOR x.
CRx – CONTROL RELAY x.
Rx – RELAY x.



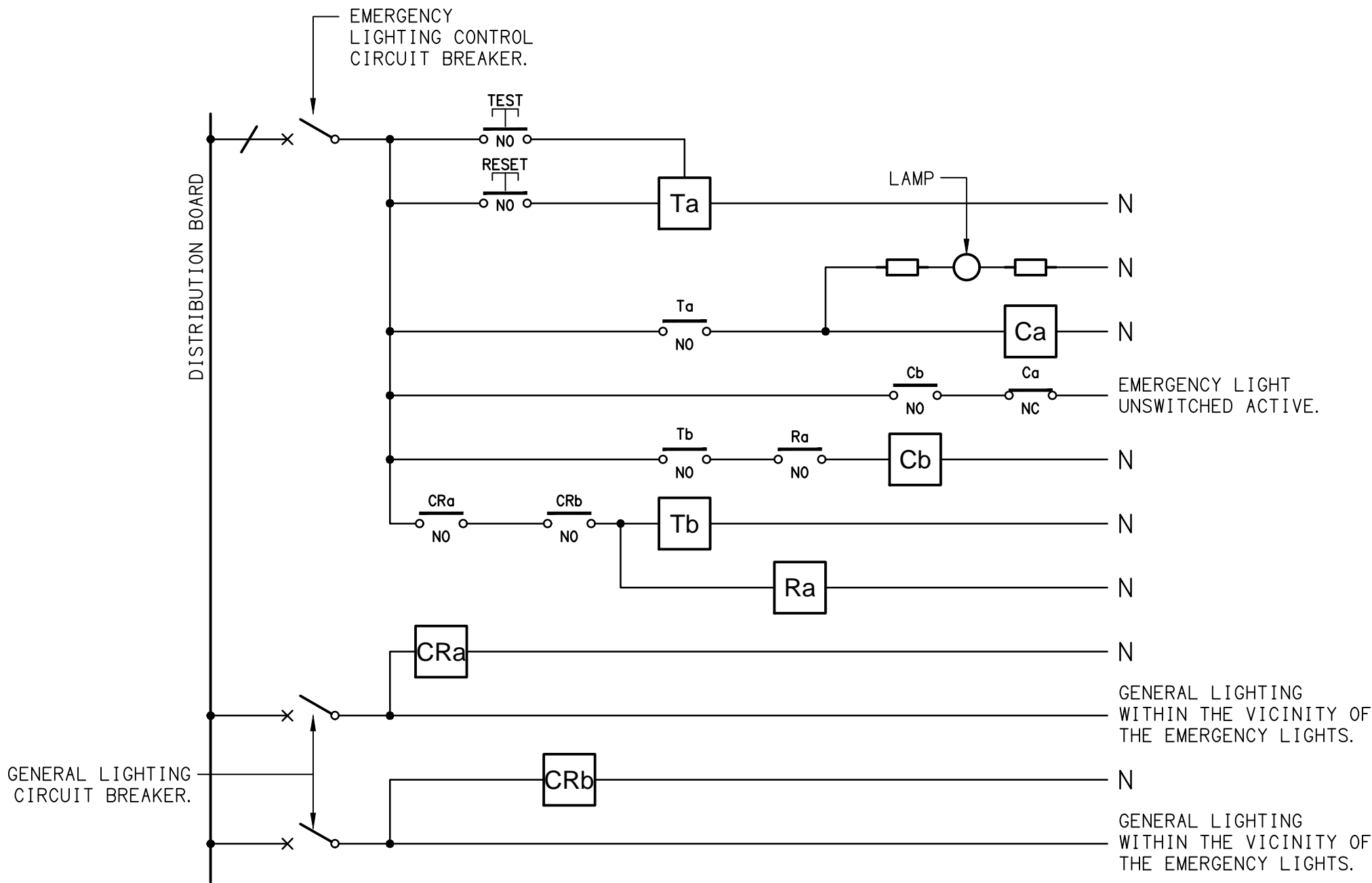
DETAIL
TYPICAL OUTLET MOUNTINGS
NOT TO SCALE



SCHEMATIC
RJ45 PINOUT CONFIGURATION
NOT TO SCALE



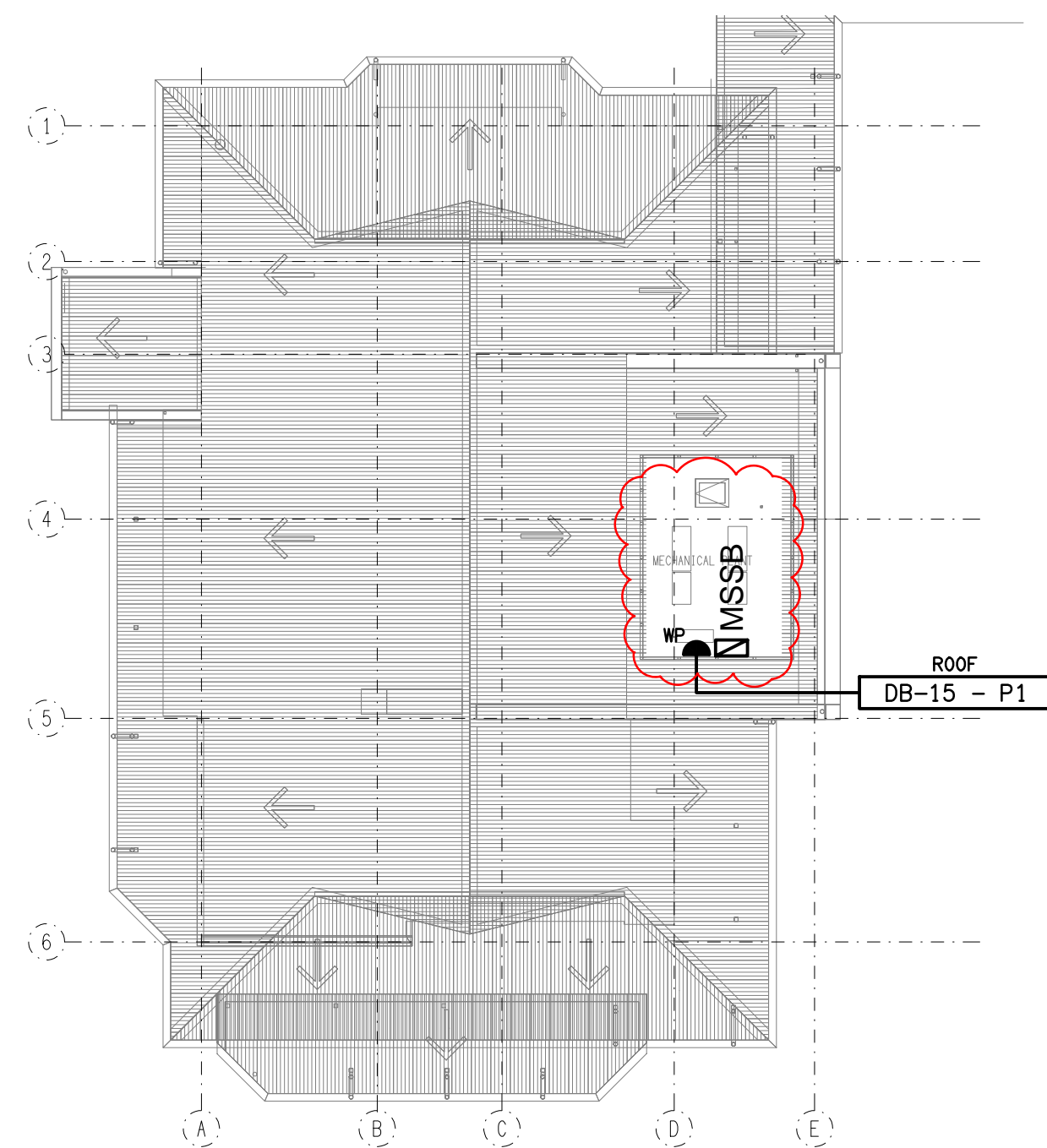
DETAIL
HAND DRYER CONNECTION
NOT TO SCALE



SCHEMATIC
EMERGENCY LIGHTING
NOT TO SCALE

NOTES

- THE EMERGENCY LIGHT UNSWITCHED ACTIVE / GENERAL LIGHTING SWITCHED ACTIVE CIRCUIT ARRANGEMENT AND CONTROL IS TYPICAL FOR ALL CIRCUITS SUPPLYING EMERGENCY LIGHTS.
- PROVIDE ADDITIONAL CONTROL RELAYS (CRx) CONFIGURED AS PER CRa AND CRb FOR ALL ADDITIONAL LIGHTING CIRCUITS THAT SUPPLY LIGHTS IN THE VICINITY OF THE EMERGENCY LIGHTS.



THE COPYRIGHT OF THIS DRAWING
REMAINS THE PROPERTY OF THE
ELECTRICAL DESIGN GROUP.

USE FIGURED DIMENSIONS
IN PREFERENCE TO SCALE.

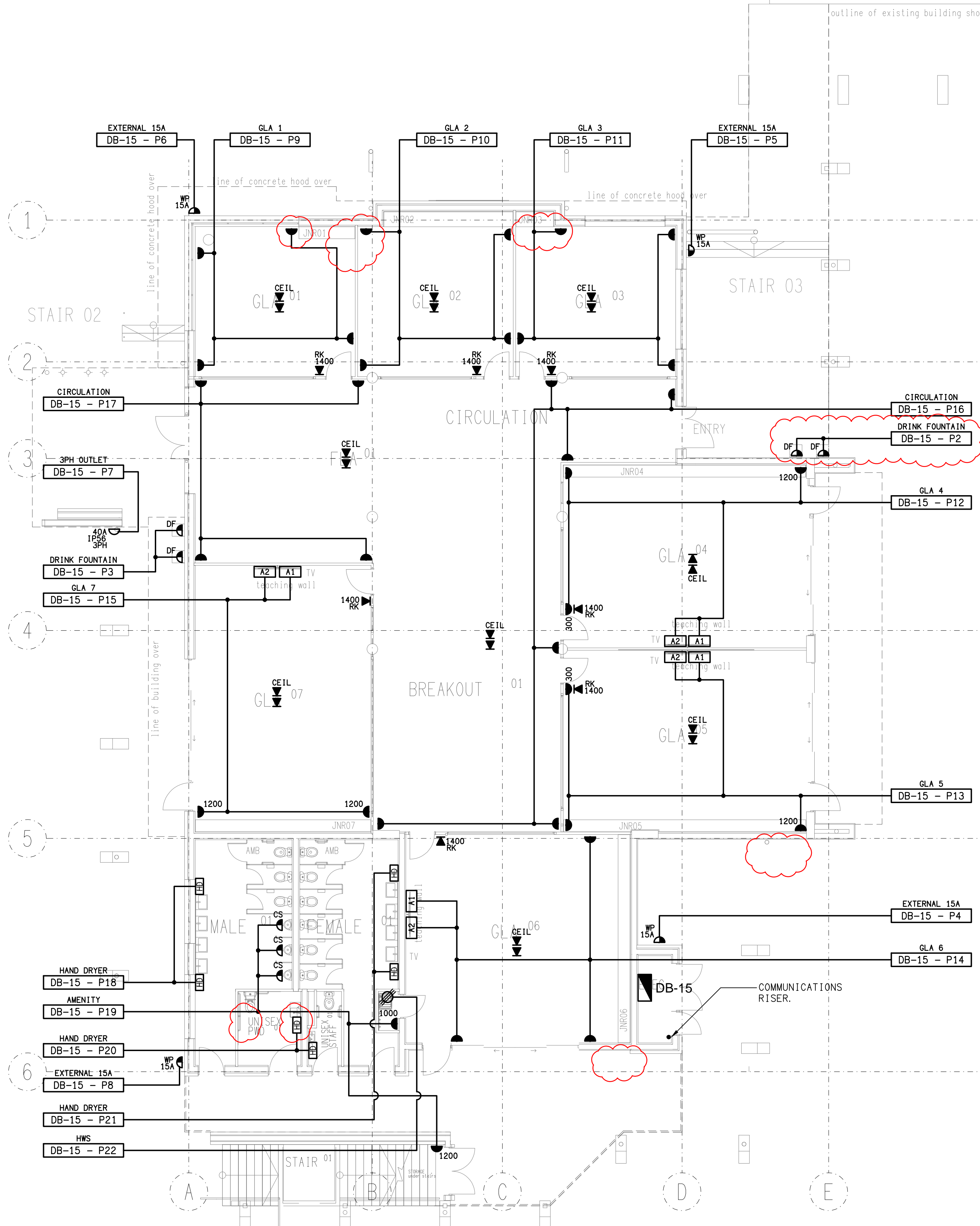
ALL DIMENSIONS TO BE
VERIFIED ONSITE.



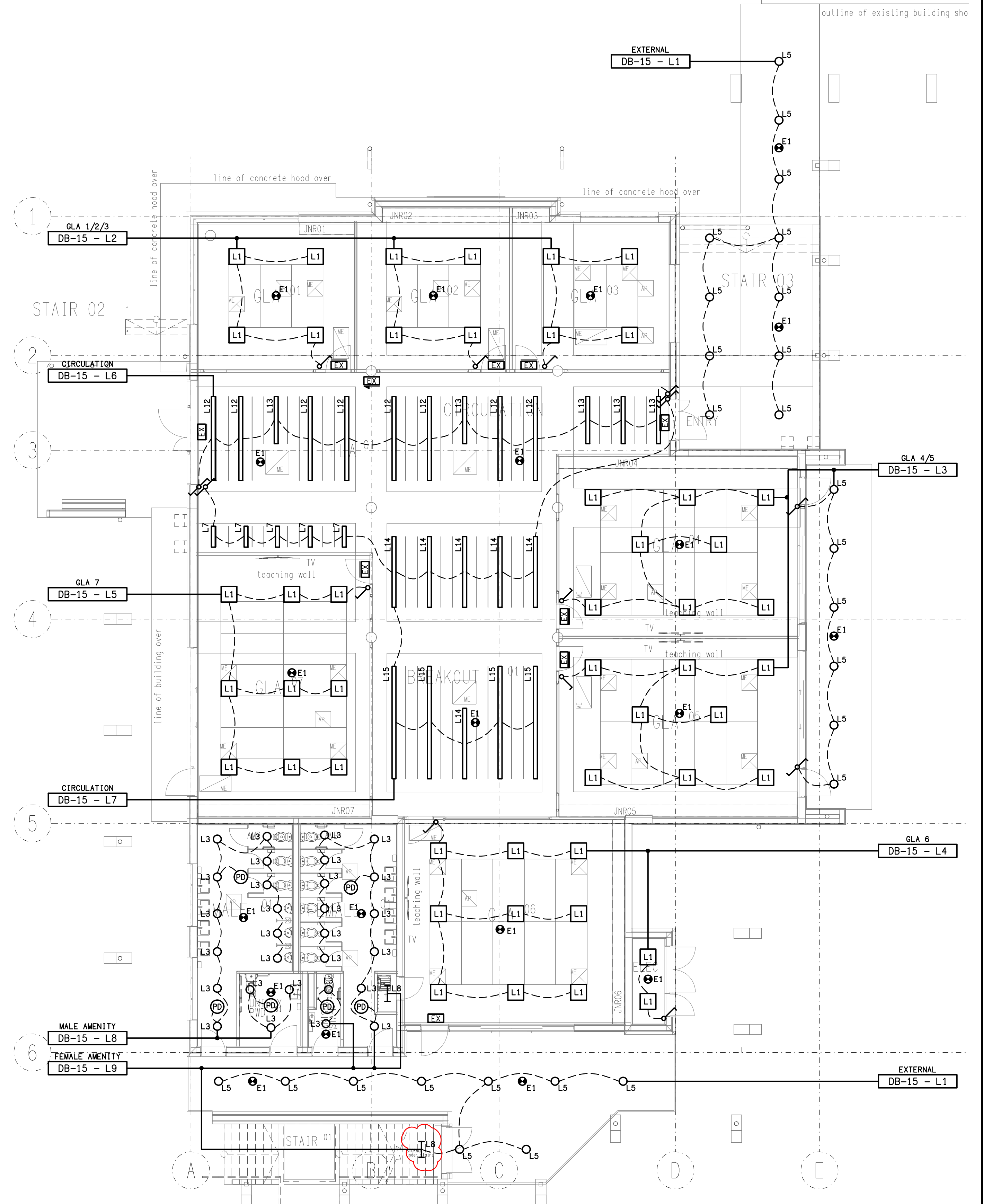
PROJECT:
KINGS CHRISTIAN COLLEGE - PIMPAMA
JUNIOR RESOURCE BUILDING - PIM 15

198 PIMPAMA JACOBS WELL ROAD, PIMPAMA, QUEENSLAND

C	CONSTRUCTION	08/12/2023	
REV:	DESCRIPTION:	DATE:	
DRAWING: ELECTRICAL SERVICES SITE PLAN			
SCALE: 1:200	AT A1	PROJECT NO: C2975a	DRAWING NO: E02
		REVISION: C	



FLOOR PLAN
GROUND LEVEL
SCALE 1: 100



REFLECTED CEILING PLAN
GROUND LEVEL
SCALE 1: 100

ELECTRICAL DESIGN GROUP BRISBANE
PTY LTD
ACN 092 710 793
TRADING AS:
ELECTRICAL DESIGN GROUP

THE COPYRIGHT OF THIS DRAWING
REMAINS THE PROPERTY OF THE
ELECTRICAL DESIGN GROUP.
USE FIGURED DIMENSIONS
IN PREFERENCE TO SCALE.
ALL DIMENSIONS TO BE
VERIFIED ON SITE.

ELECTRICAL DESIGN GROUP
ELECTRICAL BUILDING SERVICES CONSULTANTS
BRISBANE GOLD COAST

P.O.Box 15, Sherwood Q.4075
Phone: (07) 3278 4375
Email: brisbane@edg.net.au
Web: www.edg.net.au

PROJECT:
**KINGS CHRISTIAN COLLEGE - PIMPAMA
JUNIOR RESOURCE BUILDING - PIM 15**

198 PIMPAMA JACOBS WELL ROAD, PIMPAMA, QUEENSLAND

C	CONSTRUCTION	08/12/2023
REV:	DESCRIPTION:	DATE:

DRAWING:
**ELECTRICAL SERVICES
GROUND LEVEL PLANS**

SCALE:
1:100

AT A1

PROJECT NO:
C2975a

DRAWING NO:
E03

REVISION:
C



SCALE: 1:100	AT A1	PROJECT NO: C2975a	DRAWING NO: E04	REVISION: C
-----------------	-------	------------------------------	---------------------------	-----------------------

NOTES

1.0 EXTENT OF WORKS

THE ELECTRICAL SERVICES SUB-CONTRACT INCLUDES BUT IS NOT LIMITED TO THE FOLLOWING:

- SUPPLY AND INSTALLATION OF ALL COMPONENTS FORMING PART OF THE ELECTRICAL SERVICES.
- CO-ORDINATION.
- INSPECTIONS.
- TESTING AND COMMISSIONING.
- MAINTENANCE.
- UPDATE THE EXISTING AS BUILT DRAWINGS.
- UPDATE THE EXISTING MAINTENANCE MANUAL.
- CABLING, CABLE SUPPORT SYSTEMS AND ACCESS.
- POWER DISTRIBUTION.
- LIGHTING.
- COMMUNICATIONS CABLING.
- PITS AND CONDUITS.
- MODIFICATION OF EXISTING PITS.
- ALL MINOR COMPONENTS AND INCIDENTAL WORKS NOT SPECIFICALLY REFERRED TO, HOWEVER NECESSARY TO COMPLETE THE ELECTRICAL SERVICES INSTALLATION SUCH THAT IT IS HANDED OVER COMPLETE, OPERATIONAL AND FIT FOR THE INTENDED USE.

SUPPLY ALL LABOUR, MATERIALS, EQUIPMENT, AND ALL OTHER ITEMS, WHETHER MENTIONED IN DETAIL OR NOT, REQUIRED FOR THE SATISFACTORY COMPLETION OF THE ELECTRICAL SERVICES INSTALLATION, LEAVING IN FULL WORKING ORDER TO THE SATISFACTION OF THE PROJECT MANAGER.

ACCEPT FULL RESPONSIBILITY FOR LIASING, ARRANGING AND CO-ORDINATION OF ALL WORKS THAT HAVE AN EFFECT ON OR WILL BE AFFECTED BY THE ELECTRICAL SERVICES.

CONFIRM THE POSITION OF ALL OUTLETS ON SITE WITH THE SCHOOL PRIOR TO ROUGH-IN.

UPDATE THE SCHOOLS EXISTING AS BUILT DOCUMENTS AND MAINTENANCE MANUAL TO INCLUDE THE NEW WORKS.

2.0 WORKMANSHIP

ENSURE THAT THE WORK IS PERFORMED BY THE HOLDER OF A CURRENT ELECTRICAL SUB CONTRACTOR LICENSE. ENSURE THE INSTALLATION AND ALL COMPONENTS, FIXTURES, FITTINGS, OUTLETS AND CABLES ARE SUPPLIED AND INSTALLED TO A HIGH STANDARD THROUGHOUT, AND INSTALLED IN A NEAT AND TRADESMAN LIKE MANNER, TO THE CURRENT INDUSTRY STANDARDS. ENSURE ALL MATERIALS AND COMPONENTS OF A SIMILAR TYPE ARE OF THE SAME MANUFACTURER AND INSTALLED IN A UNIFORM MANNER.

IT IS THE ELECTRICAL SUB CONTRACTOR’S RESPONSIBILITY TO ENSURE THAT THE INSTALLATION IS FIT FOR PURPOSE AND IS PROVIDED AS A COMPLETE WORKING INSTALLATION. IT IS THE ELECTRICAL SUB CONTRACTOR’S RESPONSIBILITY TO PROVIDE ALL COMPONENTS, FITTINGS, FIXTURES, SYSTEMS, PROGRAMMING ETC IRRESPECTIVE OF THE LEVEL DETAILED IN THE DOCUMENTS SUCH THAT THE INSTALLATION IS PROVIDED AS A COMPLETE WORKING INSTALLATION.

CONCEAL ALL WIRING AND CONDUITS. EXPOSED CABLING OR CONDUITS ARE GENERALLY NOT ACCEPTABLE. IT IS NOTED THAT CONDUITS WILL NEED TO BE INCLUDED WITHIN THE PRECAST PANELS. ENSURE ALL COMPONENTS, EQUIPMENT AND MATERIALS SUPPLIED ARE NEW, UNUSED, DESIGNED AND SELECTED TO ENSURE SATISFACTORY OPERATION UNDER VARYING ATMOSPHERIC, CLIMATIC, HUMID TROPICAL CONDITIONS WITHOUT DISTORTION AND DETERIORATION IN ANY PART AFFECTING EFFICIENCY AND RELIABILITY OF THE SYSTEMS. DESIGN AND SELECT ALL EQUIPMENT TO PROVIDE THE NECESSARY SAFETY TO HUMAN LIFE AND PROPERTY DURING OPERATION AND MAINTENANCE WITH PARTICULAR ATTENTION GIVEN TO ELECTRICAL SAFETY AND SEGREGATION PRECAUTIONS.

CHECK THE FINISHED PAINTWORK AROUND THE AREA OF EACH INSTALLATION AND TOUCH UP ALL DAMAGED PARTS AND FINISHES AFTER THE INSTALLATION OF THE ELECTRICAL SERVICES.

ALL WORKS ARE TO BE CARRIED OUT IN ACCORDANCE WITH THE BUILDER’S PROGRAM. ENSURE ALL FINAL LOCATIONS OF OUTLETS AND FITTINGS ARE CO-ORDINATED ONSITE WITH THE ARCHITECT AND ALL OTHER SERVICES, TO THE APPROVAL OF THE PROJECT MANAGER. ALLOW TO CO-ORDINATE THE FINAL LOCATION OF ALL EQUIPMENT, FITTINGS, & OUTLETS, SUCH THAT THEY ARE INSTALLED IN ACCORDANCE WITH THE AS3000 RESTRICTED ZONES, AND ARE NOT COVERED INAPPROPRIATELY.

ENSURE THAT ALL METAL SURFACES ARE SUITABLY PROTECTED AGAINST CORROSION, AND THAT ALL PLASTIC MATERIALS ARE UV STABILISED.

PROVIDE ALL MATERIALS AS NEW, AND OF THE HIGHEST CLASS AVAILABLE FOR THEIR RESPECTIVE TYPES. ENSURE ALL ASPECTS OF THE WORK ARE OF A HIGH STANDARD THROUGHOUT, AND INSTALLED IN A NEAT AND TRADESMAN LIKE MANNER, TO THE CURRENT INDUSTRY STANDARDS.

ALL WORK IS TO BE UNDERTAKEN IN SUCH A MANNER THAT THE OPERATION OF THE REMAINING SCHOOL AREAS ARE NOT UNDULY EFFECTED BY THE WORKS.

3.0 STANDARDS

IRRESPECTIVE OF INFORMATION CONTAINED IN THE ELECTRICAL SERVICES DOCUMENTS OR IN INSTRUCTIONS, IT IS THE ELECTRICAL SUB CONTRACTOR’S RESPONSIBILITY TO ENSURE ALL ELECTRICAL SERVICES WORKS ARE INSTALLED IN ACCORDANCE WITH THE REQUIREMENTS OF THE FOLLOWING. REFER ANY DISCREPANCIES BETWEEN THE REQUIREMENTS OF THE FOLLOWING AND/OR THE ELECTRICAL SERVICES DOCUMENTS AND INSTRUCTIONS TO THE PROJECT MANAGER FOR CLARIFICATION PRIOR TO THE PLACING OF ORDERS, FABRICATION OR INSTALLATION OF THE ITEMS/METHODS IN DISCREPANCY.

- NCC BUILDING CODE OF AUSTRALIA.
- ELECTRICITY ACT.
- ELECTRICAL SAFETY ACT.
- AS/NZS3000.
- AS3002.
- WORKPLACE HEALTH AND SAFETY ACT.
- TELECOMMUNICATIONS ACT.
- ACMA REQUIREMENTS.

4.0 AUTHORITIES

ENSURE ALL OF THE ELECTRICAL SERVICES COMPLY WITH THE REQUIREMENTS OF ALL REGULATORY AUTHORITIES HAVING JURISDICTION OVER THE SITE INCLUDING BUT NOT LIMITED TO THE FOLLOWING:

- ACMA.
- LOCAL COUNCIL.
- LOCAL SUPPLY AUTHORITY.
- STATE GOVERNMENT WORKPLACE, HEALTH AND SAFETY AUTHORITY.
- LOCAL FIRE AND RESCUE AUTHORITY.

5.0 CABLES

UNLESS OTHERWISE SPECIFIED, INSTALL AND TERMINATE CABLES IN ACCORDANCE WITH THE MANUFACTURERS’ RECOMMENDATIONS. DETERMINE THE FINAL ROUTES TO SUIT THE BUILDING STRUCTURE AND SITE CONDITIONS. UNLESS NOTED OTHERWISE, PROVIDE ALL 240 VOLT POWER AND LIGHTING WIRING AS 2.5mm² TWIN & EARTH STRANDED COPPER CONDUCTORS, PVC INSULATED 0.6/1kV V75 GRADE TO AS3174, PROTECTED BY A 20 AMP CIRCUIT BREAKER. ALL CONDUIT AND FITTINGS TO BE RIGID UPVC TO AS2053, UNLESS NOTED OTHERWISE.

NOTES

6.0 POWER DISTRIBUTION

THE POWER DISTRIBUTION COMPONENT OF THIS CONTRACT INCLUDES THE PROVISION OF A NEW MCCB IN THE EXISTING MSB AND UNDERGROUND SUBMAIN TO A NEW DISTRIBUTION BOARD DB-15. THE POWER DISTRIBUTION COMPONENT OF THIS CONTRACT INCLUDES, BUT IS NOT LIMITED TO THE FOLLOWING EXTENT OF WORK:

- POWER DISTRIBUTION.
- EARTHING.
- NEW MSB CIRCUIT BREAKER TO SUPPLY DB-15.
- NEW SUBMAINS FROM THE MSB TO DB-15.
- DISTRIBUTION BOARD DB-15.
- SUBMAINS FROM DB-15 TO MSSB.
- CIRCUITS.
- ISOLATORS AND OUTLETS.
- TESTING AND COMMISSIONING.
- SWITCHBOARD SHOP DRAWING.

THE POWER SUPPLY TO THE REMAINDER OF THE SCHOOL MUST BE MAINTAINED AT ALL TIMES THE SCHOOL IS OPEN INCLUDING THE AFTER HOURS CARE. ANY INTERRUPTION TO THE POWER SUPPLY MUST BE ADVISED TO THE SCHOOL IN WRITING TWO WEEKS PRIOR.

REFER TO THE DISTRIBUTION BOARD SCHEDULE FOR ADDITIONAL REQUIREMENTS AND CIRCUIT DETAILS.

PROVIDE THE NEW DISTRIBUTION BOARD AS FOLLOW:

- IP44.
- LIGHT GREY ENCLOSURE WHITE ESCUTCHEON.
- 3 POINT LOCKABLE HANDLES ON ALL DOORS.
- LIFT OFF HINGES ON ALL DOORS AND ESCUTCHEONS.
- 1/4 TURN LATCHES AND D HANDLES ON ALL ESCUTCHEONS.
- ALL SWITCHGEAR TO BE SCHNEIDER TO MATCH THE EXISTING.
- PROVIDE SHOP DRAWINGS FOR APPROVAL.

PROVIDE WINDOWS IN ALL PANELS AND ESCUTCHEONS AS NECESSARY TO ALLOW ALL CABLE AND BUSBAR CONNECTIONS TO BE SCANNED BY A THERMAL IMAGING SCANNER / CAMERA WITHOUT HAVING TO ISOLATE THE POWER. IF THE PANEL OR ESCUTCHEON CAN BE OPENED AND THE CABLE / BUSBAR CONNECTION CAN BE SIGHTED WITHOUT ISOLATING THE POWER, WINDOWS ARE NOT REQUIRED IN THAT PANEL / ESCUTCHEON.

7.0 LIGHTING

THE LIGHTING COMPONENT OF THIS CONTRACT INCLUDES INTERNAL LIGHTING TO ALL AREAS OF THE BUILDING, EXTERNAL LIGHTING, GENERAL LIGHTING CONTROL, EMERGENCY AND EVACUATION LIGHTING AND THE LIGHTING SUB CIRCUIT WIRING. ALL OF THE LIGHT FITTINGS AND ACCESSORIES ARE TO BE PROVIDED AS PART OF THIS CONTRACT. ALL LIGHT SOURCES ARE TO BE SOLID STATE LED WITH A 5-YEAR MANUFACTURERS WARRANTY. ALL OF THE LIGHT FITTINGS, LAMPS AND ACCESSORIES ARE TO BE PROVIDED AS PART OF THIS CONTRACT. THE LIGHTING COMPONENT OF THIS CONTRACT INCLUDES, BUT IS NOT LIMITED TO THE FOLLOWING EXTENT OF WORK:

- LIGHTING.
- LIGHT FITTINGS AND ACCESSORIES.
- EARTHING OF THE LIGHTING INSTALLATION.
- LIGHTING CONTROL.
- LIGHTING SUBCIRCUITS.
- TESTING AND COMMISSIONING.
- SINGLE POINT EMERGENCY LIGHTING SYSTEM.

PROVIDE A SINGLE POINT EMERGENCY LIGHTING SYSTEM THAT COMPLIES WITH THE LATEST ISSUE OF ALL PARTS AS2293 AND THE RELEVANT PARTS OF THE NCC BCA. INSTALL EMERGENCY LIGHT FITTINGS NOMINATED AS MAINTAINED WITH THE LAMP PERMANENTLY ON SUPPLIED VIA AN UNSWITCHED ACTIVE MAINS SUPPLY WHEN THE MAINS SUPPLY IS AVAILABLE. WHEN THE MAINS SUPPLY IS NOT AVAILABLE, THE LAMP IS TO REMAIN ON SUPPLIED BY THE EMERGENCY PACK. SINGLE LAMP MAINTAINED EMERGENCY LIGHTS ARE NOT SWITCHED WITH THE LOCAL GENERAL AREA LIGHTING. (THE LAMP IS ALWAYS ON.)

INSTALL EMERGENCY LIGHT FITTINGS NOMINATED AS NON-MAINTAINED AS FOLLOWS:

- IF THE FITTING IS NOT BEING SWITCHED, THE LAMP IS TO REMAIN OFF WHEN THE MAINS SUPPLY IS AVAILABLE. WHEN THE MAINS SUPPLY IS NOT AVAILABLE THE LAMP IS TO BE SWITCHED ON SUPPLIED BY THE EMERGENCY PACK. UNSWITCHED SINGLE LAMP NON-MAINTAINED EMERGENCY LIGHTS ARE NOT SWITCHED WITH THE LOCAL GENERAL AREA LIGHTING. (THE LAMP IS ON ONLY WHEN THE MAINS SUPPLY IS NOT AVAILABLE.)
- IF THE FITTING IS BEING SWITCHED, THE LAMP IS TO BE SUPPLIED AND CONTROLLED WITH THE LOCAL GENERAL AREA LIGHTING WHEN THE MAINS SUPPLY IS AVAILABLE. WHEN THE MAINS SUPPLY IS NOT AVAILABLE THE LAMP IS TO BE SWITCHED ON, SUPPLIED BY THE EMERGENCY PACK. (THE LAMP IS ON WHEN TURNED ON WITH THE LOCAL GENERAL LIGHTING OR THE MAIN SUPPLY IS NOT AVAILABLE.)

INSTALL EMERGENCY LIGHTS SUCH THAT THE STATUS INDICATOR L.E.D. IS CLEARLY VISIBLE AND THE TEST BUTTONS ARE READILY ACCESSIBLE. LABEL EACH CIRCUIT BREAKER WHICH CONTROLS THE UNSWITCHED ACTIVE TO EXIT LIGHTS WITH A LABEL FIXED ADJACENT; ENGRAVED PLASTIC LAMINATE, GREEN BACKGROUND WITH WHITE CHARACTERS: -

WARNING
INTERRUPTING SUPPLY WILL DISCHARGE
EMERGENCY LIGHTING BATTERIES

PROVIDE WRITTEN EVIDENCE OF THE INITIAL COMMISSIONING AND TESTING AND TESTING FOR THE DURATION OF THE MAINTENANCE PERIOD IN ACCORDANCE WITH AS 2293.2.

PROVIDE MAINTENANCE OF THE EMERGENCY AND EXIT LIGHTING INSTALLATION INCLUDING RECORDS IN ACCORDANCE WITH THE LATEST ISSUE OF ALL PARTS AS2293 AND THE RELEVANT PARTS OF THE NCC BCA.

8.0 COMMUNICATIONS CABLING

THE COMMUNICATIONS CABLING COMPONENT OF THIS CONTRACT INCLUDES A NEW COMMUNICATION RACK CR-15 TO SUPPORT CAT 6 RJ45 OUTLETS CABLED TO MODULAR PATCH PANELS IN THE COMMUNICATIONS RACK CR-15 VIA CAT 6 UTP CABLING. PROVIDE A NEW UNDERGROUND OPTICAL FIBRE CABLE AS PER THE EQUIPMENT SCHEDULE FROM THE EXISTING COMMUNICATIONS RACK CR-A TO A NEW FBOBT IN CR-15. THE COMMUNICATIONS CABLING IS TO BE OF THE SAME EXISTING STRUCTURED CABLING SOLUTION USED AND BE PROVIDED WITH A MANUFACTURERS 15 YEAR WARRANTY.

THE COMMUNICATIONS CABLING COMPONENT OF THIS CONTRACT INCLUDES, BUT IS NOT LIMITED TO THE FOLLOWING EXTENT OF WORK:

- CAT 6 COMMUNICATIONS OUTLETS.
- CAT 6 CABLING.
- COMMUNICATIONS RACK CR-15.
- PATCH PANELS.
- FBOBT.
- OPTICAL FIBRE CABLE CONNECTION CR-A TO CR-15.
- LABELLING.
- TESTING AND COMMISSIONING.
- TEACHING WALL (Ax) POINTS AND ASSOCIATED CABLING.

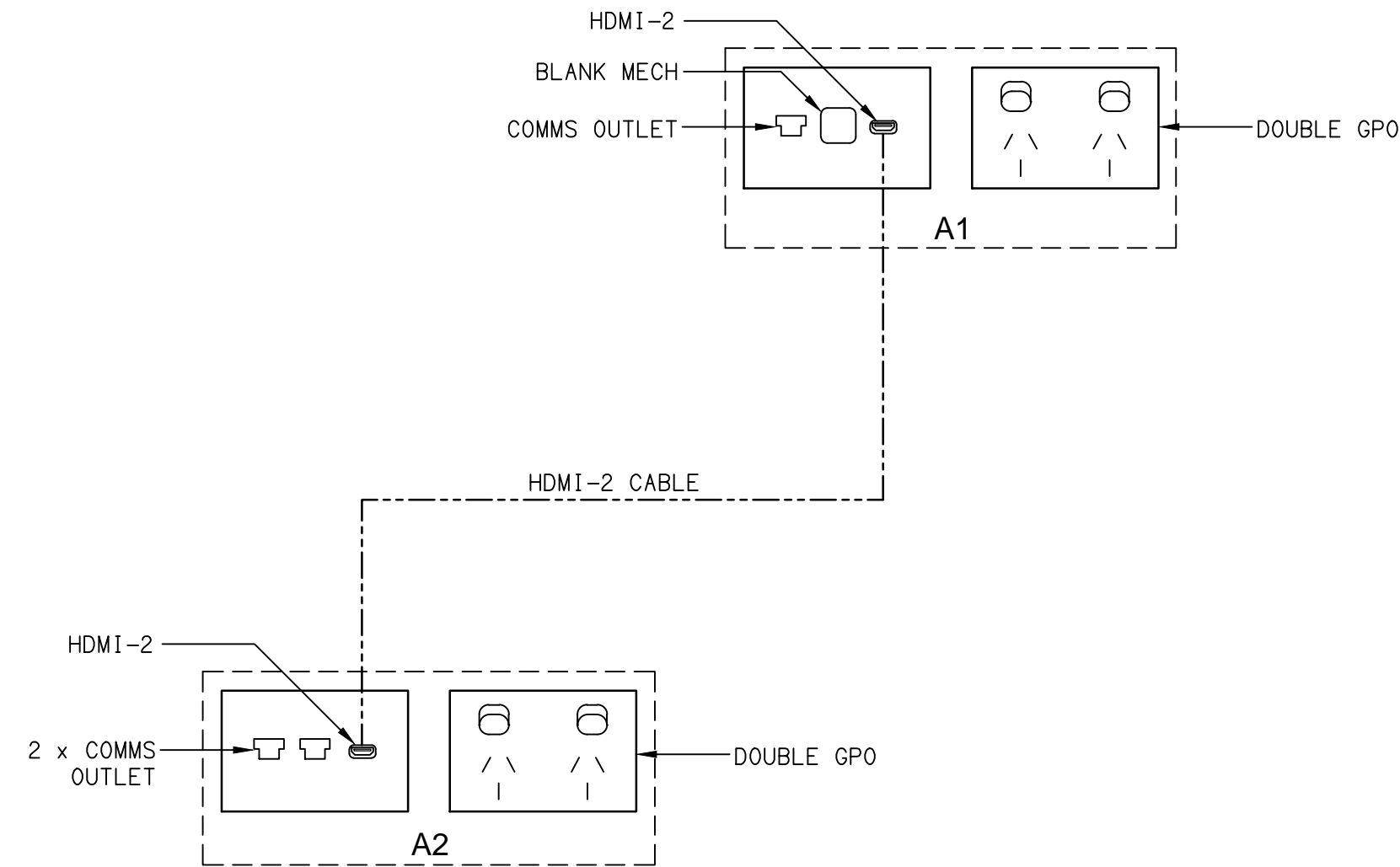
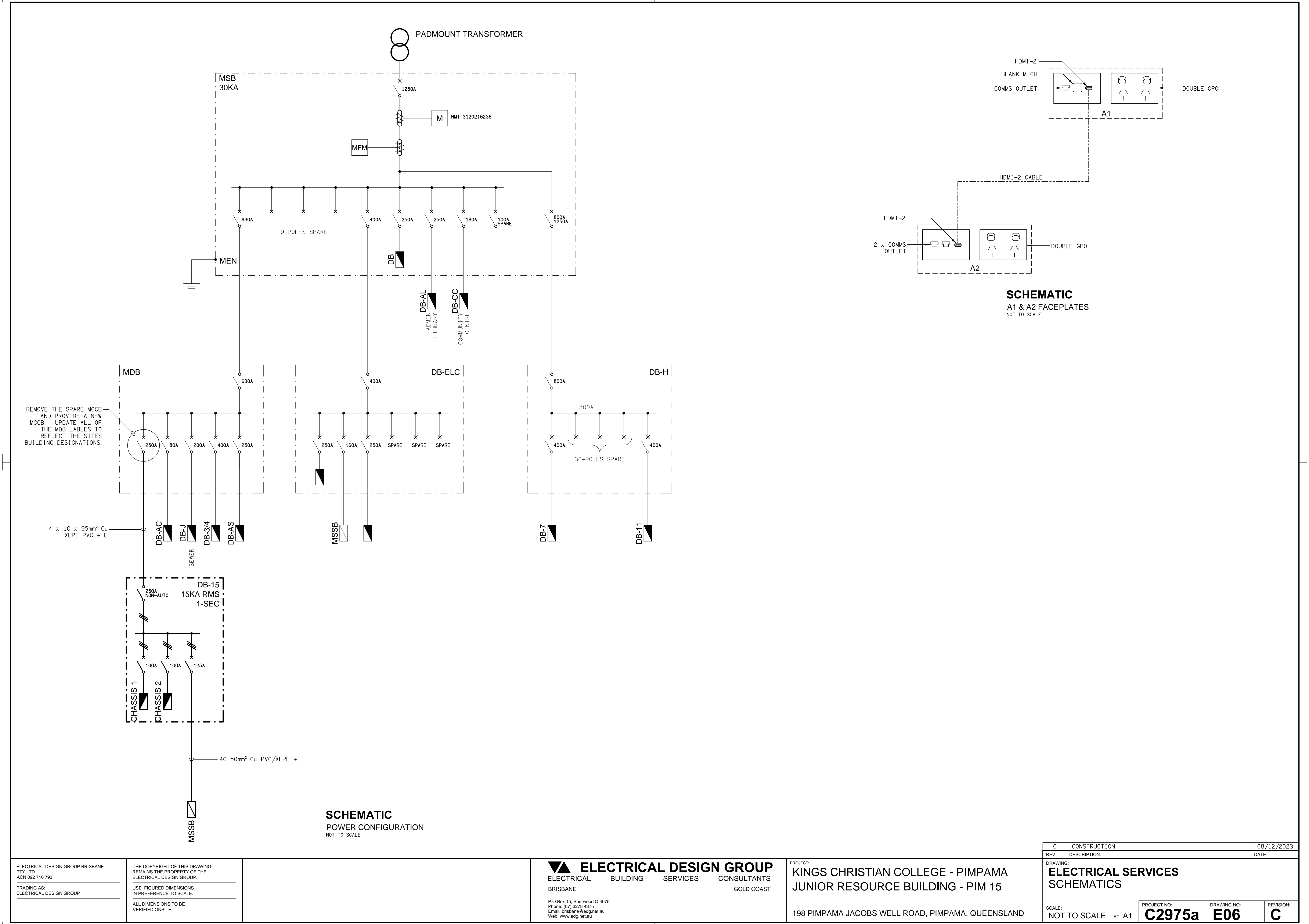
ALL COMMUNICATIONS CABLING IS TO BE UNDERTAKEN BY A ACMA LICENCE HOLDER. THE PATCH LEADS, FLY LEADS, POE SWITCH AND UPS WILL BE PROVIDED BY THE SCHOOL.

NOTES

9. ABBREVIATIONS

- A – AMP CURRENT RATING
- AB – MOUNT ABOVE BENCH.
- AFFL – ABOVE FINISHED FLOOR LEVEL.
- BB – MOUNT BELOW BENCH.
- BH – MOUNT ON BULKHEAD.
- CEIL – MOUNT ON CEILING.
- CS – MOUNT WITHIN CEILING SPACE.
- C/W – COMPLETE WITH.
- DW – DISHWASHER.
- HP – HOT PLATE.
- MCB – MINIATURE CIRCUIT BREAKER.
- MSB – MAIN SWITCHBOARD.
- MSSB – MECHANICAL SERVICES SWITCHBOARD.
- MW – MICROWAVE.
- N – NEON / LED INDICATOR WHEN ON.
- NTS – NOT TO SCALE.
- OV – OVEN.
- RCD – CIRCUIT PROTECTED VIA A 30mA RESIDUAL DEVICE INTEGRAL TO THE CIRCUIT BREAKER.
- REF – REFRIGERATOR.
- UNO – UNLESS NOTED OTHERWISE.
- WP – WEATHERPROOF TO IP56 UNO.
- 500 – NUMBER DENOTES MOUNTING HEIGHT AFFL.

			<table><tr><td>C</td><td>CONSTRUCTION</td><td>08/12/2023</td></tr><tr><td>REV:</td><td>DESCRIPTION:</td><td>DATE:</td></tr></table>		C	CONSTRUCTION	08/12/2023	REV:	DESCRIPTION:	DATE:																			
C	CONSTRUCTION	08/12/2023																											
REV:	DESCRIPTION:	DATE:																											
<table><tr><td>ELECTRICAL DESIGN GROUP BRISBANE PTY LTD ACN 092 710 793</td><td>THE COPYRIGHT OF THIS DRAWING REMAINS THE PROPERTY OF THE ELECTRICAL DESIGN GROUP.</td></tr><tr><td>TRADING AS: ELECTRICAL DESIGN GROUP</td><td>USE FIGURED DIMENSIONS IN PREFERENCE TO SCALE.</td></tr><tr><td colspan="2">ALL DIMENSIONS TO BE VERIFIED ONSITE.</td></tr></table>	ELECTRICAL DESIGN GROUP BRISBANE PTY LTD ACN 092 710 793	THE COPYRIGHT OF THIS DRAWING REMAINS THE PROPERTY OF THE ELECTRICAL DESIGN GROUP.	TRADING AS: ELECTRICAL DESIGN GROUP	USE FIGURED DIMENSIONS IN PREFERENCE TO SCALE.	ALL DIMENSIONS TO BE VERIFIED ONSITE.		<table><tr><td></td><td>ELECTRICAL DESIGN GROUP</td></tr><tr><td>ELECTRICAL</td><td>BUILDING SERVICES CONSULTANTS</td></tr><tr><td>BRISBANE</td><td>GOLD COAST</td></tr><tr><td colspan="2">P.O.Box 15, Sherwood Q.4075 Phone: (07) 3278 4375 Email: brisbane@edg.net.au Web: www.edg.net.au</td></tr></table>		ELECTRICAL DESIGN GROUP	ELECTRICAL	BUILDING SERVICES CONSULTANTS	BRISBANE	GOLD COAST	P.O.Box 15, Sherwood Q.4075 Phone: (07) 3278 4375 Email: brisbane@edg.net.au Web: www.edg.net.au		<table><tr><td>PROJECT:</td><td>KINGS CHRISTIAN COLLEGE - PIMPAMA JUNIOR RESOURCE BUILDING - PIM 15</td></tr><tr><td colspan="2">198 PIMPAMA JACOBS WELL ROAD, PIMPAMA, QUEENSLAND</td></tr></table>		PROJECT:	KINGS CHRISTIAN COLLEGE - PIMPAMA JUNIOR RESOURCE BUILDING - PIM 15	198 PIMPAMA JACOBS WELL ROAD, PIMPAMA, QUEENSLAND		<table><tr><td colspan="3">DRAWING: ELECTRICAL SERVICES NOTES</td></tr><tr><td>SCALE: NOT TO SCALE AT A1</td><td>PROJECT NO: C2975a</td><td>DRAWING NO: E05</td><td>REVISION: C</td></tr></table>	DRAWING: ELECTRICAL SERVICES NOTES			SCALE: NOT TO SCALE AT A1	PROJECT NO: C2975a	DRAWING NO: E05	REVISION: C
ELECTRICAL DESIGN GROUP BRISBANE PTY LTD ACN 092 710 793	THE COPYRIGHT OF THIS DRAWING REMAINS THE PROPERTY OF THE ELECTRICAL DESIGN GROUP.																												
TRADING AS: ELECTRICAL DESIGN GROUP	USE FIGURED DIMENSIONS IN PREFERENCE TO SCALE.																												
ALL DIMENSIONS TO BE VERIFIED ONSITE.																													
	ELECTRICAL DESIGN GROUP																												
ELECTRICAL	BUILDING SERVICES CONSULTANTS																												
BRISBANE	GOLD COAST																												
P.O.Box 15, Sherwood Q.4075 Phone: (07) 3278 4375 Email: brisbane@edg.net.au Web: www.edg.net.au																													
PROJECT:	KINGS CHRISTIAN COLLEGE - PIMPAMA JUNIOR RESOURCE BUILDING - PIM 15																												
198 PIMPAMA JACOBS WELL ROAD, PIMPAMA, QUEENSLAND																													
DRAWING: ELECTRICAL SERVICES NOTES																													
SCALE: NOT TO SCALE AT A1	PROJECT NO: C2975a	DRAWING NO: E05	REVISION: C																										



SCHEMATIC
A1 & A2 FACEPLATES
NOT TO SCALE