



ELECTRICAL DESIGN GROUP

ELECTRICAL BUILDING SERVICES CONSULTANTS

P.O. Box 15, SHERWOOD Q. 4075

Phone: (07) 3278 4375

Website: www.edg.net.au Email: brisbane@edg.net.au

C3351a - REWARD PET FOODS, WILSONTON

C3351a-0001(B).xls

ELECTRICAL SERVICES CONTRACT DOCUMENT SCHEDULE

REVISION B - 18 DECEMBER 2024

ISSUING INFORMATION				DATE OF ISSUE							
	DAY	MONTH	YEAR	28	18						
				11	12						
				24	24						
				P	T						
A = APPROVAL		C = CONSTRUCTION		N = COORDINATION		P = PRELIMINARY		T = TENDER			

DISTRIBUTION				NUMBER OF COPIES							
WWW.EDG.NET.AU				1E	1E						
CVN CONSULTANTS				1E	1E						
BOSS CONSTRUCTIONS QLD				1E	1E						
P = PRINT				T = TRACING				D = DISC			
				E = EMAIL				F = FAX			

DOCUMENTS		REVISION									
C3351a-E01.dwg	LEGEND & DETAILS	A	B								
C3351a-E02.dwg	NOTES	A	B								
C3351a-E03.dwg	SITE PLAN	A	B								
C3351a-E04.dwg	NORTHERN SHED FLOOR PLAN & RCP	A	B								
C3351a-E05.dwg	SOUTHERN SHED FLOOR PLAN	A	B								
C3351a-E06.dwg	SOUTHERN SHED REFLECTED CEILING PLAN	A	B								
C3351a-E07.dwg	POWER SCHEMATICS	A	B								
C3351a-0001.xls	CONTRACT DOCUMENT SCHEDULE	A	B								
C3351a-0002.xls	EQUIPMENT SCHEDULE	A									
C3351a-0004.xls	DISTRIBUTION BOARD DB-1-3 SCHEDULE		A								
C3351a-0005.xls	DISTRIBUTION BOARD DB-1-5 SCHEDULE		A								
C3351a-0006.xls	DISTRIBUTION BOARD DB-1-6 SCHEDULE		A								
C3351a-0007.xls	DISTRIBUTION BOARD DB-2-2 SCHEDULE		A								
C3351a-0008.xls	DISTRIBUTION BOARD DB-2-3 SCHEDULE		A								
C3351a-0009.xls	DISTRIBUTION BOARD DB-2-4 SCHEDULE		A								
C3351a-0010.xls	DISTRIBUTION BOARD DB-1-1 SCHEDULE		A								
C3351a-0001.zip	FITTING & OUTLET DATASHEETS		A								



ELECTRICAL DESIGN GROUP

ELECTRICAL BUILDING SERVICES CONSULTANTS

P.O. Box 15, SHERWOOD Q. 4075

Phone: (07) 3278 4375 Fax: (07) 3716 0222

Web Site: www.edg.net.au Email: brisbane@edg.net.au

C3351a - REWARD PET FOODS, WILSONTON

C3351a-0002(A).xls

ELECTRICAL EQUIPMENT SCHEDULE

REVISION A - 28 NOVEMBER 2024

THE EQUIPMENT SUPPLIER CONTACT DETAILS MAY BE AVAILABLE ON THE EDG WEBSITE VIA THE FOLLOWING LINK
www.edg.net.au/links.html

TYPE	LAMPS	DESCRIPTION	COLOUR / ACCESSORY	CATALOGUE No	REV
L1	50-150W LED 4000K	SUSPENDED HIGH BAY C/W INTEGRAL DRIVER SUSPEND AS HIGH AS PRACTICAL POWER SELECTABLE	BLACK	MELEC ML-NOX- HB50-150-A	A
L2	22W LED 4000K	600 LONG IP65 DIFFUSED BATTEN C/W INTEGRAL ELECTRONIC CONTROL GEAR AND A NON MAINTAINED AS2293 EMERGENCY PACK SUSPENDED / SURFACE MOUNTED AS REQUIRED. THE L2 FITTINGS ARE NOT SWITCHED AND ARE TO ONLY OPERATE UPON POWER SUPPLY FAILURE IN ACCORDANCE WITH AS2293	NA	TYPE TO MATCH THE EXISTING BATTENS	A
L3	45W LED 4000K	1200 LONG IP65 DIFFUSED BATTEN C/W INTEGRAL ELECTRONIC CONTROL GEAR SUSPENDED / SURFACE MOUNTED AS REQUIRED.	NA	TYPE TO MATCH THE EXISTING BATTENS	A
L4	EXISTING SURFACE BATTEN TO REMAIN OR BE RELOCATED WHERE INDICATED				A
L5	45W LED 4000K	1200 LONG IP65 DIFFUSED BATTEN C/W INTEGRAL ELECTRONIC CONTROL GEAR SUSPENDED / SURFACE MOUNTED AS REQUIRED.	NA	TYPE TO MATCH THE EXISTING BATTENS	A
L6	50-150W LED 4000K	SUSPENDED HIGH BAY C/W INTEGRAL DRIVER SUSPEND AS HIGH AS PRACTICAL POWER SELECTABLE C/W DROP LENS	BLACK	MELEC ML-NOX- HB50-150-A + ML-NOX- HB-REF-D-A	A
L7	100-230W LED 4000K	SUSPENDED HIGH BAY C/W INTEGRAL DRIVER SUSPEND AS HIGH AS PRACTICAL POWER SELECTABLE C/W DROP LENS	BLACK	MELEC ML-NOX- HB100-230-A + ML- NOX-HB-REF-D-A	A
L8	13W LED 4000K	RECESSED IP54 DOWNLIGHT C/W REMOTE DRIVER	WHITE TRIM	MELEC MR13 MULTIXC	A
L9	45W LED 4000K	1200 LONG IP65 DIFFUSED BATTEN C/W INTEGRAL ELECTRONIC CONTROL GEAR WALL MOUNTED AT 2400 AFFL.	NA	TYPE TO MATCH THE EXISTING BATTENS	A
E1	LED	EMERGENCY LIGHT: RECESSED NON-MAINTAINED EMERGENCY LIGHT. AS2293 CLASSIFICATION C0-D63 - C90-D63.	WHITE	CLEVERTRONICS LLIFE	A
E2	EXISTING EMERGENCY LIGHT: SURFACE MOUNTED NON-MAINTAINED EMERGENCY LIGHT.				A
E3	LED	BACK OF HOUSE EXIT LIGHT: MAINTAINED 24M VIEWING DISTANCE EXIT LIGHT C/W DIFFUSERS & DIRECTIONAL ARROWS AS SHOWN. CEILING OR WALL MOUNT BETWEEN 2100mm & 2700mm AFFL IF THERE IS NO VERTICAL SURFACE TO MOUNT THE FITTING ON WITHIN THIS RANGE CONFIRM THE MOUNTING HEIGHT WITH THE ENGINEER. AS2293 CLASSIFICATION C0- D1.25- C90-D2	WHITE	CLEVERTRONICS LCFLED	A



ELECTRICAL DESIGN GROUP

ELECTRICAL BUILDING SERVICES CONSULTANTS

P.O. Box 15, SHERWOOD Q. 4075

Phone: (07) 3278 4375 Fax: (07) 3716 0222

Web Site: www.edg.net.au Email: brisbane@edg.net.au

C3351a - REWARD PET FOODS, WILSONTON

C3351a-0002(A).xls

ELECTRICAL EQUIPMENT SCHEDULE

REVISION A - 28 NOVEMBER 2024

THE EQUIPMENT SUPPLIER CONTACT DETAILS MAY BE AVAILABLE ON THE EDG WEBSITE VIA THE FOLLOWING LINK
www.edg.net.au/links.html

TYPE	LAMPS	DESCRIPTION	COLOUR / ACCESSORY	CATALOGUE No	REV
EX	LED	EXIT LIGHT: MAINTAINED WEATHER PROOF 24M VIEWING DISTANCE EXIT LIGHT C/W DIFFUSERS & DIRECTIONAL ARROWS AS SHOWN. CEILING OR WALL MOUNT BETWEEN 2100mm & 2700mm AFFL IF THERE IS NO VERTICAL SURFACE TO MOUNT THE FITTING ON WITHIN THIS RANGE CONFIRM THE MOUNTING HEIGHT WITH THE ENGINEER. AS2293 CLASSIFICATION C0-D1.25- C90-D2	WHITE	CLEVERTRONICS LWELED	A
ONE-WAY LIGHT SWITCH		IP66 ONE-WAY LIGHT SWITCH C/W CIRCUIT IDENTIFICATION ON THE FACEPLATE MOUNTED AT 1000mm AFFL UNLESS NOTED OTHERWISE.	WHITE	CLIPSAL WS226/20-RG	A
ONE-WAY LIGHT SWITCH STANDARD (S)		ONE-WAY LIGHT SWITCH C/W CIRCUIT IDENTIFICATION ON THE FACEPLATE BEHIND THE SURROUND MOUNTED AT 1000mm AFFL UNLESS NOTED OTHERWISE.	WHITE	CLIPSAL C2000 SERIES 30USM	A
SPECIAL PURPOSE POWER OUTLET		SPECIAL PURPOSE POWER OUTLET. MOUNT AT 300mm AFFL U.N.O. RATING 10A U.N.O. SIZE AND TYPE AS NOTED	-	CLIPSAL 56 SERIES GREY	A
SINGLE POWER OUTLET		IP66 SINGLE POWER OUTLET C/W CIRCUIT IDENTIFICATION ON THE FACEPLATE BEHIND THE SURROUND MOUNT AT 1000 AFFL U.N.O.	WHITE	CLIPSAL56C310GY	A
SINGLE POWER OUTLET STANDARD (S)		SINGLE POWER OUTLET C/W CIRCUIT IDENTIFICATION ON THE FACEPLATE BEHIND THE SURROUND MOUNT AT 300 AFFL U.N.O.	WHITE	CLIPSAL C2000 SERIES	A
DOUBLE POWER OUTLET STANDARD (S)		DOUBLE POWER OUTLET C/W CIRCUIT IDENTIFICATION ON THE FACEPLATE BEHIND THE SURROUND MOUNT AT 300 AFFL U.N.O	WHITE	CLIPSAL C2000 SERIES	A
SINGLE-PHASE ISOLATOR		SINGLE-PHASE WEATHERPROOF ISOLATOR. MOUNT AT 1000mm AFFL U.N.O. RATING 20A U.N.O. CONNECT TO EQUIPMENT VIA FLEXIBLE CONDUIT.	-	CLIPSAL 56SW320-GY	A
THREE-PHASE ISOLATOR		THREE-PHASE WEATHERPROOF ISOLATOR. MOUNT AT 1000mm AFFL U.N.O. RATING 20A U.N.O. CONNECT TO EQUIPMENT VIA FLEXIBLE CONDUIT. - COORDINATE LOCATION ONSITE WITH MOTOR.	-	CLIPSAL 56SW320-GY	A
CAT 6 COMMUNICATIONS OUTLET		RJ45 CAT-6 COMMUNICATIONS OUTLET, CABLED BACK TO THE COMMUNICATIONS RACK TERMINATED ONTO FACILITY PATCH PANELS VIA 4-PAIR CAT-6 UTP CABLE. MOUNT UP TO 3 RJ45 OUTLETS PER MULTI-GANG FACEPLATE WITH SEPARATE PERMANENT LABELLING FOR EACH OUTLET.	WHITE	CLIPSAL C2000 SERIES KRONE JACK C/W SHUTTER	A
COMMUNICATIONS RACK CR-A		EXISTING BUILDING 2 SOUTH COMMUNICATIONS RACK TO BE USED TO SUPPLY THE NEW BUILDING 2 SOUTH COMMUNICATIONS OUTLETS			A



ELECTRICAL DESIGN GROUP

ELECTRICAL BUILDING SERVICES CONSULTANTS

P.O. Box 15, SHERWOOD Q. 4075

Phone: (07) 3278 4375 Fax: (07) 3716 0222

Web Site: www.edg.net.au Email: brisbane@edg.net.au

C3351a - REWARD PET FOODS, WILSONTON

C3351a-0002(A).xls

ELECTRICAL EQUIPMENT SCHEDULE

REVISION A - 28 NOVEMBER 2024

THE EQUIPMENT SUPPLIER CONTACT DETAILS MAY BE AVAILABLE ON THE EDG WEBSITE VIA THE FOLLOWING LINK
www.edg.net.au/links.html

TYPE	LAMPS	DESCRIPTION	COLOUR / ACCESSORY	CATALOGUE No	REV
COMMUNICATIONS RACK CR-B		NEW 8RU WALL MOUNTED 600 DEEP BUILDING 1 NORTH COMMUNICATIONS RACK TO BE USED TO SUPPLY THE NEW BUILDING 1 NORTH COMMUNICATIONS OUTLETS PROVIDE CR-B WITH A CAT 6 PATCH PANEL.			A
MSB		EXISTING SITE MAIN SWITCHBOARD TO REMAIN AS IS			A
MDB-1		EXISTING BUILDING 1 NORTH MAIN DISTRIBUTION BOARD TO BE MODIFIED AS PER THE MDB-1 SCHEMATIC AND CONFIGURATION DETAIL			A
DB-1-1		NEW IP66 DISTRIBUTION BOARD AS PER THE NOTES AND MDB-1 SCHEMATIC UPDATE THE MCCB LABELS TO REFLECT THE NEW SWITCHBOARD DESIGNATIONS			A
DB-1-2		NEW IP66 DISTRIBUTION BOARD AS PER THE NOTES DB-1-2 SCHEMATIC AND CONFIGURATION DETAIL			A
DB-1-3		EXISTING DISTRIBUTION BOARD TO BE PROVIDED WITH A NEW LABEL DB-1-3 PROVIDE NEW SWITCHGEAR AS PER THE DB-1-3 SCHEDULE. REMOVE ALL SWITCHGEAR MADE REDUNDANT BY THE WORKS. UPDATE THE SCHEDULE AT PRACTICAL COMPLETION			A
DB-1-4		EXISTING DISTRIBUTION BOARD TO BE PROVIDED WITH A NEW LABEL DB-1-4			A
DB-1-5		EXISTING DISTRIBUTION BOARD TO BE PROVIDED WITH A NEW LABEL DB-1-5 PROVIDE NEW SWITCHGEAR AS PER THE DB-1-5 SCHEDULE. REMOVE ALL SWITCHGEAR MADE REDUNDANT BY THE WORKS. UPDATE THE SCHEDULE AT PRACTICAL COMPLETION			A
DB-1-6		NEW IP66 DISTRIBUTION BOARD AS PER THE NOTES AND DB-1-6 SCHEDULE			A
MDB-2		EXISTING BUILDING 2 SOUTH MAIN DISTRIBUTION BOARD TO REMAIN AS IS			A
DB-2-1		EXISTING DISTRIBUTION BOARD INTEGRAL TO MDB-2 TO REMAIN AS IS			A
DB-2-2		EXISTING DISTRIBUTION BOARD TO BE PROVIDED WITH A NEW LABEL DB-2-2 PROVIDE NEW SWITCHGEAR AS PER THE DB-2-2 SCHEDULE. REMOVE ALL SWITCHGEAR MADE REDUNDANT BY THE WORKS. UPDATE THE SCHEDULE AT PRACTICAL COMPLETION			A
DB-2-3		NEW IP66 DISTRIBUTION BOARD AS PER THE NOTES AND DB-2-3 SCHEDULE			A
DB-2-4		NEW IP66 DISTRIBUTION BOARD AS PER THE NOTES AND DB-2-4 SCHEDULE			A



ELECTRICAL DESIGN GROUP

ELECTRICAL BUILDING SERVICES CONSULTANTS

P.O. Box 15, SHERWOOD Q. 4075

Phone: (07) 3278 4375

Website: www.edg.net.au Email: brisbane@edg.net.au

C3351a - REWARD PET FOODS, WILSONTON
DISTRIBUTION BOARD DB-1-3 (NORTH EXISTING)
REVISION A - 18 DECEMBER 2024

C3351a-0004(A).xls

							REV
UPDATE THE EXISTING SWITCHBOARD WITH THE FOLLOWING ADDITIONAL CIRCUITS / SWITCHGEAR. REMOVE ALL EXISTING SWITCHGEAR MADE REDUNDANT BY THE WORKS. IT IS ACCEPTABLE TO UTILISE SPARE SWITCHGEAR OR SWITCHGEAR MADE REDUNDANT BY THE WORKS FOR THE NEW CIRCUITS IF IT IS IN GOOD CONDITION AND HAS THE APPROPRIATE RATING AND FUNCTION. UPDATE THE SCHEDULE AT PRACTICAL COMPLETION SO THE USE AND LOCATION OF ALL CIRCUITS CAN BE SIMPLY IDENTIFIED.							A
CIRC	PH	CIRCUIT BREAKER (amps)	CONTROL EQUIPMENT	CABLE SIZE (mm ²)	LOCATION	CIRCUIT USE	
P1	1	20	RCBO	2.5		GPO	A
P2	1	20	RCBO	2.5		GPO	A
P3	1	20	RCBO	2.5		GPO	A
P4	1	20	RCBO	2.5		GPO	A



ELECTRICAL DESIGN GROUP

ELECTRICAL BUILDING SERVICES CONSULTANTS

P.O. Box 15, SHERWOOD Q. 4075

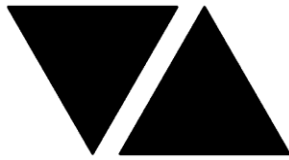
Phone: (07) 3278 4375

Website: www.edg.net.au Email: brisbane@edg.net.au

C3351a - REWARD PET FOODS, WILSONTON
DISTRIBUTION BOARD DB-1-5 (NORTH EXISTING)
REVISION A - 18 DECEMBER 2024

C3351a-0005(A).xls

							REV
UPDATE THE EXISTING SWITCHBOARD WITH THE FOLLOWING ADDITIONAL CIRCUITS / SWITCHGEAR. REMOVE ALL EXISTING SWITCHGEAR MADE REDUNDANT BY THE WORKS. IT IS ACCEPTABLE TO UTILISE SPARE SWITCHGEAR OR SWITCHGEAR MADE REDUNDANT BY THE WORKS FOR THE NEW CIRCUITS IF IT IS IN GOOD CONDITION AND HAS THE APPROPRIATE RATING AND FUNCTION. UPDATE THE SCHEDULE AT PRACTICAL COMPLETION SO THE USE AND LOCATION OF ALL CIRCUITS CAN BE SIMPLY IDENTIFIED.							A
CIRC	PH	CIRCUIT BREAKER (amps)	CONTROL EQUIPMENT	CABLE SIZE (mm ²)	LOCATION	CIRCUIT USE	
P1	1	20	RCBO	2.5		GPO	A
P2	1	20	RCBO	2.5		GPO	A
P3	1	20	RCBO	2.5		GPO	A



ELECTRICAL DESIGN GROUP

ELECTRICAL BUILDING SERVICES CONSULTANTS

P.O. Box 15, SHERWOOD Q. 4075

Phone: (07) 3278 4375

Website: www.edg.net.au Email: brisbane@edg.net.au

C3351a - REWARD PET FOODS, WILSONTON

C3351a-0006(A).xls

DISTRIBUTION BOARD DB-1-6 (NORTH NEW)

REVISION A - 18 DECEMBER 2024

							REV	
FAULT CURRENT:		6KA USING CASCADING			MAIN SWITCH:		250A NON AUTO LOAD BREAK	A
CHASSIS SIZE:		84 POLE			SUPPLIED FROM:		DB-1-2	A
CHASSIS RATING:		250A			SUPPLY CABLE:		1C95	A
PHASES:		3						A
PROVIDE THE DB WITH A FULL WIDTH EMPTY DIN RAIL TO ACCOMMODATE FUTURE CONTACTORS AND CONTROLS. PROVIDE THE DB WITH AN AS2293 EMERGENCY LIGHTING CONTROL SYSTEM TO CONTROL THE ASSOCIATED EMERGENCY LIGHTS. PROVIDE THE DB WITH SURGE PROTECTION. REFER TO THE NOTES FOR ADDITIONAL REQUIREMENTS							A	
CIRC	PH	CIRCUIT BREAKER (amps)	CONTROL EQUIPMENT	CABLE SIZE (mm ²)	LOCATION	CIRCUIT USE		
P1	1	20	RCBO	2.5	EXTERNAL	GPO	A	
P2	1	20	RCBO	2.5	EXTERNAL	GPO	A	
P3	1	20	RCBO	2.5	EXTERNAL	GPO	A	
P4	1	20	RCBO	2.5	EXTERNAL	GPO	A	
P5	1	20	RCBO	2.5	INTERNAL	GPO	A	
P6	1	20	RCBO	2.5	INTERNAL	GPO	A	
P7	1	20	RCBO	2.5	INTERNAL	GPO	A	
P8	1	20	RCBO	2.5	INTERNAL	GPO	A	
P9	1	20	RCBO	2.5	INTERNAL	GPO	A	
P10	1	20	RCBO	2.5	INTERNAL	GPO	A	
P11	1	20	RCBO	2.5	INTERNAL	GPO	A	
P12	1	20	RCBO	2.5	INTERNAL	GPO	A	
P13	1	20	RCBO	2.5	INTERNAL	GPO	A	
P14	1	20	RCBO	2.5	INTERNAL	GPO	A	
P15	1	20	RCBO	2.5	INTERNAL	GPO	A	
P16	1	20	RCBO	2.5	INTERNAL	GPO	A	
P17	1	20	RCBO	2.5	INTERNAL	GPO	A	
P18	3	32	RCBO	6.0	INTERNAL	CHARGER	A	
P19	1	20	RCBO	2.5	INTERNAL	DOOR	A	
P20	1	20	RCBO	2.5	INTERNAL	DOOR	A	
P21	1	20	RCBO	2.5	INTERNAL	GPO	A	
P22	1	20	RCBO	2.5	INTERNAL	BUG ZAPPER	A	
P23	1	20	RCBO	2.5	INTERNAL	CR-B	A	
P24	1	20	RCBO	2.5	EXTERNAL	FUEL	A	
P25	1	20	RCBO	2.5	EXTERNAL	GPO	A	
L1	1	20	RCBO	2.5		LIGHTS	A	
L2	1	20	RCBO	2.5		LIGHTS	A	
L3	1	20	RCBO	2.5	LINK	LIGHTS	A	



ELECTRICAL DESIGN GROUP

ELECTRICAL BUILDING SERVICES CONSULTANTS

P.O. Box 15, SHERWOOD Q. 4075

Phone: (07) 3278 4375

Website: www.edg.net.au Email: brisbane@edg.net.au

C3351a - REWARD PET FOODS, WILSONTON
DISTRIBUTION BOARD DB-2-2 (SOUTH EXISTING)
REVISION A - 18 DECEMBER 2024

C3351a-0007(A).xls

							REV
UPDATE THE EXISTING SWITCHBOARD WITH THE FOLLOWING ADDITIONAL CIRCUITS / SWITCHGEAR. REMOVE ALL EXISTING SWITCHGEAR MADE REDUNDANT BY THE WORKS. IT IS ACCEPTABLE TO UTILISE SPARE SWITCHGEAR OR SWITCHGEAR MADE REDUNDANT BY THE WORKS FOR THE NEW CIRCUITS IF IT IS IN GOOD CONDITION AND HAS THE APPROPRIATE RATING AND FUNCTION. UPDATE THE SCHEDULE AT PRACTICAL COMPLETION SO THE USE AND LOCATION OF ALL CIRCUITS CAN BE SIMPLY IDENTIFIED.							A
CIRC	PH	CIRCUIT BREAKER (amps)	CONTROL EQUIPMENT	CABLE SIZE (mm ²)	LOCATION	CIRCUIT USE	
P1	1	20	RCBO	2.5	DRYERS	GPO	A
P2	1	20	RCBO	2.5	DRYERS	GPO	A
P3	1	20	RCBO	2.5	PACKING	DOORS	A
P4	1	20	RCBO	2.5	PACKING	GPO	A
P5	1	20	RCBO	2.5	PACKING	GPO	A
P6	1	20	RCBO	2.5	PACKING	GPO	A
P7	1	20	RCBO	2.5	PACKING	GPO	A
P8	1	20	RCBO	2.5	PACKING	GPO	A
P9	1	20	RCBO	2.5	PACKING	GPO	A
P10	1	20	RCBO	2.5	PACKING	GPO	A
P11	1	20	RCBO	2.5	PACKING	GPO	A
P12	1	20	RCBO	2.5	PACKING	GPO	A
P13	1	20	RCBO	2.5	PACKING	GPO	A
P14	1	20	RCBO	2.5	PACKING	GPO	A
P15	1	20	RCBO	2.5	QA	GPO	A
P16	1	20	RCBO	2.5	ENTRY	GPO	A
P17	1	20	RCBO	2.5	PACKING	BUG ZAPPER	A
P18	1	20	RCBO	2.5	PACKING	DOORS	A
L1	1	20	RCBO	2.5	PACKING	LIGHTS	A
L2	1	20	RCBO	2.5	QA	LIGHTS	A
L3	1	20	RCBO	2.5	DRYERS	LIGHTS	A



ELECTRICAL DESIGN GROUP

ELECTRICAL BUILDING SERVICES CONSULTANTS

P.O. Box 15, SHERWOOD Q. 4075

Phone: (07) 3278 4375

Website: www.edg.net.au Email: brisbane@edg.net.au

C3351a - REWARD PET FOODS, WILSONTON

C3351a-0008(A).xls

DISTRIBUTION BOARD DB-2-3 (SOUTH NEW)

REVISION A - 18 DECEMBER 2024

FAULT CURRENT: 6KA USING CASCADING CHASSIS SIZE: 60 POLE CHASSIS RATING: 250A PHASES: 3 MAIN SWITCH: 250A NON AUTO LOAD BREAK SUPPLIED FROM: MDB-2 SUPPLY CABLE: 4C25							REV
							A
							A
							A
PROVIDE THE DB WITH A FULL WIDTH EMPTY DIN RAIL TO ACCOMMODATE FUTURE CONTACTORS AND CONTROLS. PROVIDE THE DB WITH AN AS2293 EMERGENCY LIGHTING CONTROL SYSTEM TO CONTROL THE ASSOCIATED EMERGENCY LIGHTS. PROVIDE THE DB WITH SURGE PROTECTION. REFER TO THE NOTES FOR ADDITIONAL REQUIREMENTS							A
CIRC	PH	CIRCUIT BREAKER (amps)	CONTROL EQUIPMENT	CABLE SIZE (mm ²)	LOCATION	CIRCUIT USE	
P1	3	32	RCBO	6.0	INTERNAL	CHARGER	A
P2	1	20	RCBO	2.5	EXTERNAL	GPO	A
P3	1	20	RCBO	2.5	EXTERNAL	GPO	A
P4	1	20	RCBO	2.5	EXTERNAL	GPO	A
P5	1	20	RCBO	2.5	INTERNAL	GPO	A
P6	1	20	RCBO	2.5	INTERNAL	GPO	A
P7	1	20	RCBO	2.5	INTERNAL	GPO	A
P8	1	20	RCBO	2.5	INTERNAL	GPO	A
P9	1	20	RCBO	2.5	INTERNAL	GPO	A
P10	1	20	RCBO	2.5	INTERNAL	DOORS	A
P11	1	20	RCBO	2.5	INTERNAL	DOORS	A
P12	1	20	RCBO	2.5	AMENITY	HWS	A
P13	1	20	RCBO	2.5	AMENITY	GPO	A
L1	1	20	RCBO	2.5		LIGHTS	A
L2	1	20	RCBO	2.5		LIGHTS	A
L3	1	20	RCBO	2.5		LIGHTS	A



ELECTRICAL DESIGN GROUP

ELECTRICAL BUILDING SERVICES CONSULTANTS

P.O. Box 15, SHERWOOD Q. 4075

Phone: (07) 3278 4375

Website: www.edg.net.au Email: brisbane@edg.net.au

C3351a - REWARD PET FOODS, WILSONTON

C3351a-0009(A).xls

DISTRIBUTION BOARD DB-2-4 (SOUTH NEW)

REVISION A - 18 DECEMBER 2024

FAULT CURRENT: 6KA USING CASCADING CHASSIS SIZE: 60 POLE CHASSIS RATING: 250A PHASES: 3 MAIN SWITCH: 250A NON AUTO LOAD BREAK SUPPLIED FROM: MDB-2 SUPPLY CABLE: 4C25							REV
							A
							A
							A
PROVIDE THE DB WITH A FULL WIDTH EMPTY DIN RAIL TO ACCOMMODATE FUTURE CONTACTORS AND CONTROLS. PROVIDE THE DB WITH AN AS2293 EMERGENCY LIGHTING CONTROL SYSTEM TO CONTROL THE ASSOCIATED EMERGENCY LIGHTS. PROVIDE THE DB WITH SURGE PROTECTION. REFER TO THE NOTES FOR ADDITIONAL REQUIREMENTS							A
CIRC	PH	CIRCUIT BREAKER (amps)	CONTROL EQUIPMENT	CABLE SIZE (mm ²)	LOCATION	CIRCUIT USE	
P1	3	20	RCBO	2.5	WORKSHOP	3PH OUTLET	A
P2	3	20	RCBO	2.5	WORKSHOP	3PH OUTLET	A
P3	3	20	RCBO	2.5	WORKSHOP	3PH OUTLET	A
P4	3	20	RCBO	2.5	WORKSHOP	3PH OUTLET	A
P5	3	20	RCBO	2.5	WORKSHOP	3PH OUTLET	A
P6	1	20	RCBO	2.5	WORKSHOP	20A OUTLET	A
P7	1	20	RCBO	2.5	WORKSHOP	20A OUTLET	A
P8	1	20	RCBO	2.5	WORKSHOP	20A OUTLET	A
P9	1	20	RCBO	2.5	WORKSHOP	20A OUTLET	A
P10	1	20	RCBO	2.5	WORKSHOP	20A OUTLET	A
P11	1	20	RCBO	2.5	WORKSHOP	GPO	A
P12	1	20	RCBO	2.5	WORKSHOP	GPO	A
P13	1	20	RCBO	2.5	WORKSHOP	GPO	A
L1	1	20	RCBO	2.5	WORKSHOP	LIGHTS	A

LEGEND

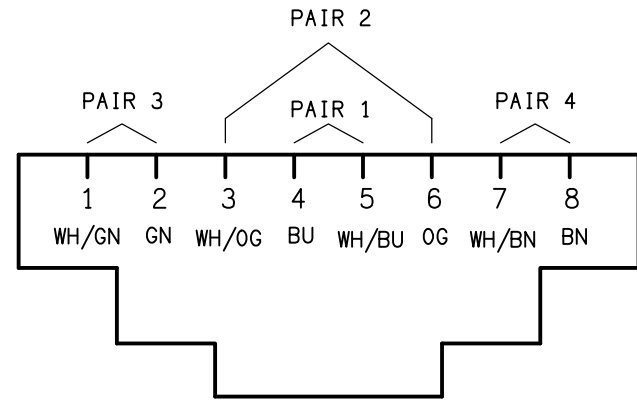
	ELECTRICAL SERVICES SWITCHBOARD.
	SWITCHBOARD / CONTROL PANEL NOT PROVIDED AS PART OF THE ELECTRICAL SUBCONTRACT.
	SINGLE IP66 POWER OUTLET.
	SINGLE STANDARD POWER OUTLET.
	DOUBLE STANDARD POWER OUTLET.
	SPECIAL PURPOSE POWER OUTLET.
	SINGLE PHASE ISOLATOR.
	THREE PHASE ISOLATOR.
	ONE-WAY IP66 LIGHT SWITCH.
	ONE-WAY STANDARD LIGHT SWITCH.
	CIRCUIT LINE.
	SWITCH LINE.
	POWER CIRCUIT DESIGNATION. DENOTES DB AND CIRCUIT.
	ELECTRICAL EQUIPMENT AS NOTED.
	RJ45 COMMUNICATIONS OUTLET.
	FUSE.
	SINGLE PHASE.
	THREE PHASE.
	CURRENT TRANSFORMER C/W REMOVABLE LINK.
	FUSE LINK.
	COMBINED FUSE SWITCH.
	CIRCUIT BREAKER.
	ISOLATOR.
	RESIDUAL CURRENT DEVICE.
	CONTACTOR - NORMALLY OPEN.
	CONTACTOR - NORMALLY CLOSED.
	REFER TO DETAIL NOTED FOR THE AREA SHOWN HATCHED. ADDITIONAL OUTLETS & FITTINGS MAY BE SHOWN ON DETAIL.

LEGEND

E1	E1: GENERAL LED EMERGENCY LIGHT.
E2	E2: EXISTING EMERGENCY LIGHT.
E3	E3: EMERGENCY LED EXIT LIGHT, BACK OF HOUSE.
	EX: EMERGENCY LED EXIT LIGHT, WEATHERPROOF.
Lx	Lx: LIGHT FITTING C/W NON-MAINTAINED EMERGENCY BATTERY PACK. TYPE AS NOTED.
L1	L1: SUSPENDED HIGH BAY FITTING.
L2	L2: 600 LONG BATTEN C/W NON-MAINTAINED EMERGENCY PACK.
L3	L3: 1200 LONG IP65 BATTEN, SUSPENDED / SURFACE AS REQUIRED.
L4	L4: EXISTING BATTEN TO REMAIN OR RELOCATED AS SHOWN.
L5	L5: 1200 LONG IP65 BATTEN, SUSPENDED / SURFACE AS REQUIRED.
L6	L6: SUSPENDED HIGH BAY FITTING C/W DROP LENS.
L7	L7: SUSPENDED HIGH BAY FITTING C/W DROP LENS.
L8	L8: RECESSED IP54 DOWNLIGHT.
L9	L9: 1200 LONG IP65 BATTEN, WALL MOUNTED.

NOTE

ALL ELECTRICAL PENETRATIONS THROUGH THE ROOF SHEETING ARE TO BE IN LINE WITH THE STRUCTURAL OR MECHANICAL SERVICES PENETRATIONS TO AVOID DEDICATED FLASHINGS FOR THE ELECTRICAL SERVICES.

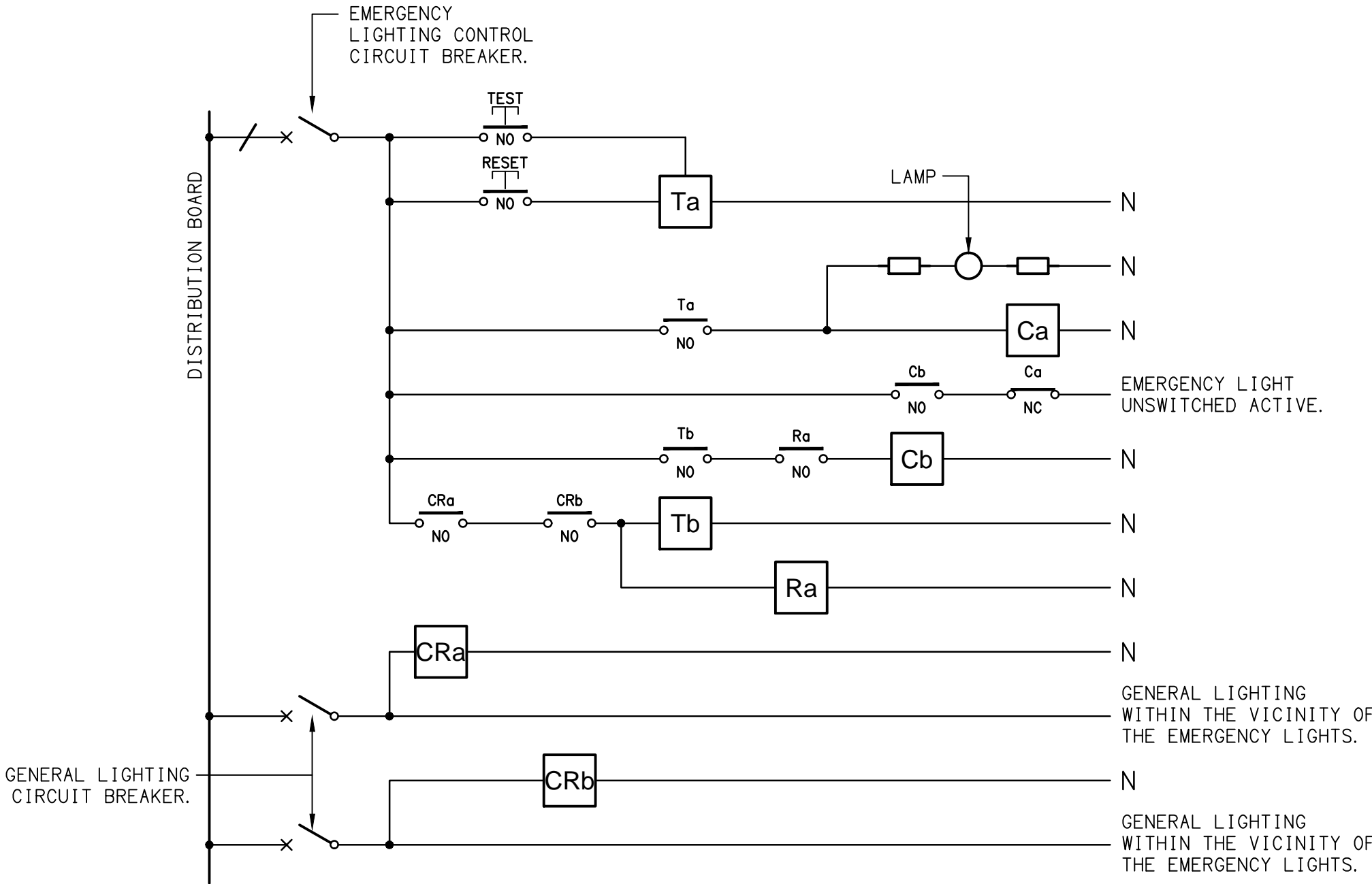


SCHEMATIC

RJ45 PINOUT CONFIGURATION
NOT TO SCALE

EQUIPMENT:

- TEST – TEST PUSH BUTTON MOUNTED ON THE DISTRIBUTION BOARD ESCUTCHEON.
RESET – RESET PUSH BUTTON MOUNTED ON THE DISTRIBUTION BOARD ESCUTCHEON.
LAMP – AMBER TEST INDICATING LAMP MOUNTED ON THE DISTRIBUTION BOARD ESCUTCHEON.
Ta – ADJUSTABLE 0–3 HOUR TIMED RELAY.
Tb – 15 MINUTE RUN–ON TIMER TO OPERATE UPON THE RETURN OF MAINS POWER.
Cx – CONTACTOR x.
CRx – CONTROL RELAY x.
Rx – RELAY x.

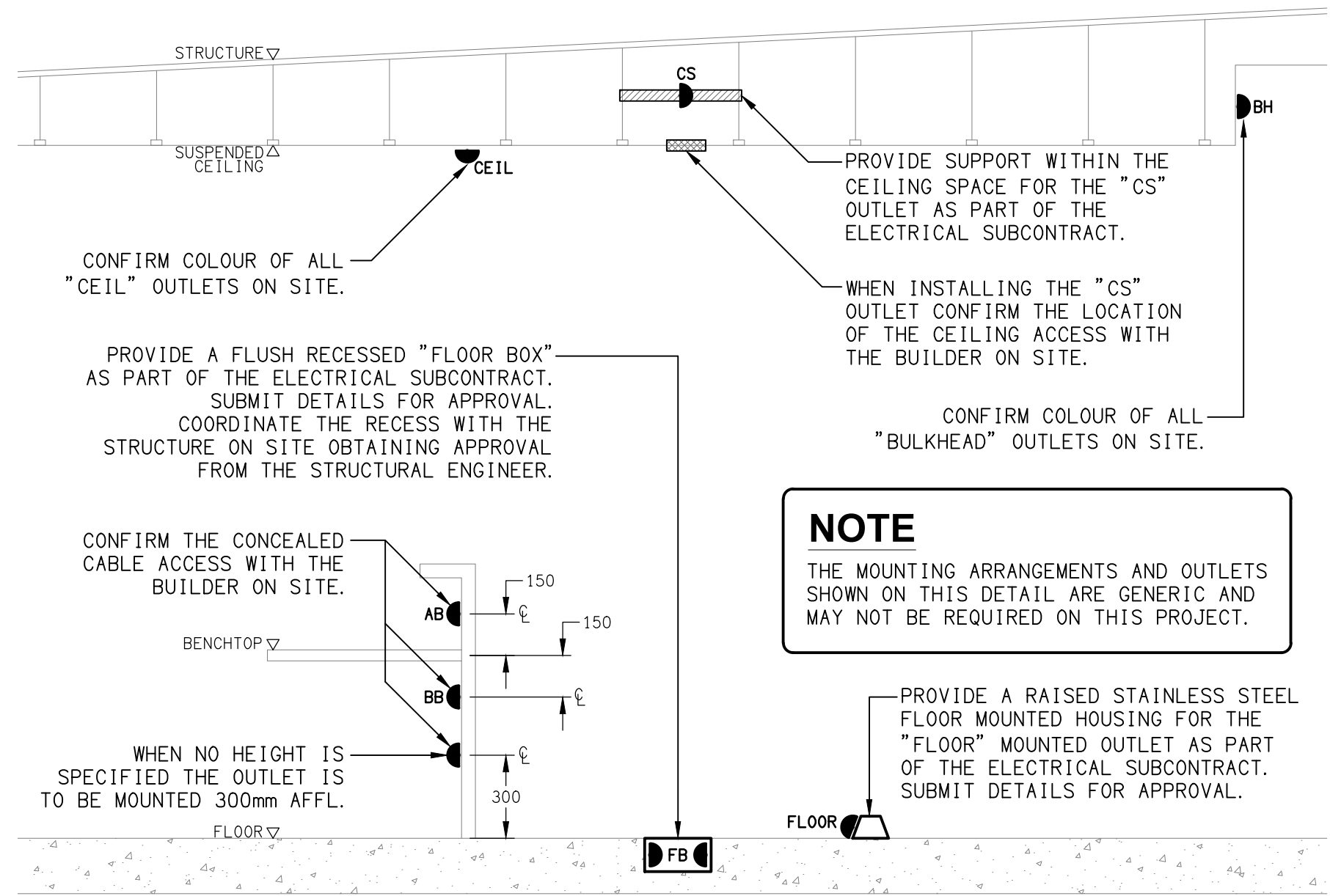


SCHEMATIC

EMERGENCY LIGHTING
NOT TO SCALE

NOTES

1. THE EMERGENCY LIGHT UNSWITCHED ACTIVE / GENERAL LIGHTING SWITCHED ACTIVE CIRCUIT ARRANGEMENT AND CONTROL IS TYPICAL FOR ALL CIRCUITS SUPPLYING EMERGENCY LIGHTS.
2. PROVIDE ADDITIONAL CONTROL RELAYS (CRx) CONFIGURED AS PER CRa AND CRb FOR ALL ADDITIONAL LIGHTING CIRCUITS THAT SUPPLY LIGHTS IN THE VICINITY OF THE EMERGENCY LIGHTS.



DETAIL

TYPICAL OUTLET MOUNTINGS
NOT TO SCALE

ELECTRICAL DESIGN GROUP BRISBANE PTY LTD ACN 092 710 793 TRADING AS: ELECTRICAL DESIGN GROUP	THE COPYRIGHT OF THIS DRAWING REMAINS THE PROPERTY OF THE ELECTRICAL DESIGN GROUP. USE FIGURED DIMENSIONS IN PREFERENCE TO SCALE. ALL DIMENSIONS TO BE VERIFIED ONSITE.	<div><div></div><div>ELECTRICAL DESIGN GROUP ELECTRICAL BUILDING SERVICES CONSULTANTS BRISBANE GOLD COAST P.O.Box 15, Sherwood Q.4075 Phone: (07) 3278 4375 Email: brisbane@edg.net.au Web: www.edg.net.au</div></div>	PROJECT: REWARD PET FOODS, WILSONTON 41-45 INDUSTRIAL AVENUE, WILSONTON TOOWOOMBA	DRAWING: ELECTRICAL SERVICES LEGEND & DETAILS		
			SCALE: NOT TO SCALE AT A1	PROJECT NO: C3351a	DRAWING NO: E01	REVISION: B

NOTES

1. EXTENT OF WORKS

THE ELECTRICAL SERVICES SUB-CONTRACT INCLUDES BUT IS NOT LIMITED TO THE FOLLOWING:

- SUPPLY AND INSTALLATION OF ALL COMPONENTS FORMING PART OF THE ELECTRICAL SERVICES.
- CO-ORDINATION.
- INSPECTIONS.
- TESTING AND COMMISSIONING.
- MAINTENANCE.
- AS BUILT DRAWINGS.
- CABLING, CABLE SUPPORT SYSTEMS AND ACCESS.
- POWER DISTRIBUTION.
- LIGHTING.
- COMMUNICATIONS CABLING.
- ALL MINOR COMPONENTS AND INCIDENTAL WORKS NOT SPECIFICALLY REFERRED TO, HOWEVER NECESSARY TO COMPLETE THE ELECTRICAL SERVICES INSTALLATION SUCH THAT IT IS HANDED OVER COMPLETE, OPERATIONAL AND FIT FOR THE INTENDED USE.

SUPPLY ALL LABOUR, MATERIALS, EQUIPMENT, AND ALL OTHER ITEMS, WHETHER MENTIONED IN DETAIL OR NOT, REQUIRED FOR THE SATISFACTORY COMPLETION OF THE ELECTRICAL SERVICES INSTALLATION, LEAVING IN FULL WORKING ORDER TO THE SATISFACTION OF THE PROJECT MANAGER.

PRIOR TO COMMENCING WORK CONSULT SITE MANAGEMENT FOR ANY HAZARDOUS MATERIAL AND OR ASBESTOS REGISTERS AS WELL AS UNDERTAKE A THOROUGH INSPECTION OF THE SITE TO IDENTIFY ANY POTENTIAL HAZARDOUS MATERIALS, ASBESTOS AND HEALTH OR SAFETY RISKS. ADVISE THE CONTRACTOR OF ANY POTENTIAL HAZARDOUS MATERIALS, ASBESTOS AND HEALTH OR SAFETY RISKS IF IDENTIFIED AND DO NOT COMMENCE WORK UNTIL AN APPROPRIATE MANAGEMENT PLAN HAS BEEN DEVELOPED AND AGREED TO BY ALL PARTIES

SUPPLY ALL LABOUR, MATERIALS, EQUIPMENT, AND ALL OTHER ITEMS, WHETHER MENTIONED IN DETAIL OR NOT, REQUIRED FOR THE SATISFACTORY COMPLETION OF THE ELECTRICAL SERVICES INSTALLATION, LEAVING IN FULL WORKING ORDER TO THE SATISFACTION OF THE PROJECT MANAGER.

ACCEPT FULL RESPONSIBILITY FOR LIASING, ARRANGING AND CO-ORDINATION OF ALL WORKS THAT HAVE AN EFFECT ON OR WILL BE AFFECTED BY THE ELECTRICAL SERVICES.

2. WORKMANSHIP

ENSURE THAT THE ELECTRICAL WORK IS PERFORMED BY THE HOLDER OF A CURRENT ELECTRICAL SUB CONTRACTOR LICENSE AND THE SERVICES COVERED BY THE ACMA IS PERFORMED BY THE HOLDER OF THE APPROPRIATE CURRENT ACMA LICENSE. ENSURE THE INSTALLATION AND ALL COMPONENTS, FIXTURES, FITTINGS, OUTLETS AND CABLES ARE SUPPLIED AND INSTALLED TO A HIGH STANDARD THROUGHOUT, AND INSTALLED IN A NEAT AND TRADESMAN LIKE MANNER, TO THE CURRENT INDUSTRY STANDARDS. ENSURE ALL MATERIALS AND COMPONENTS OF A SIMILAR TYPE ARE OF THE SAME MANUFACTURER AND INSTALLED IN A UNIFORM MANNER.

IT IS THE ELECTRICAL SUB CONTRACTOR'S RESPONSIBILITY TO ENSURE THAT THE INSTALLATION IS FIT FOR PURPOSE AND IS PROVIDED AS A COMPLETE WORKING INSTALLATION. IT IS THE ELECTRICAL SUB CONTRACTOR'S RESPONSIBILITY TO PROVIDE ALL COMPONENTS, FITTINGS, FIXTURES, SYSTEMS, PROGRAMMING ETC IRRESPECTIVE OF THE LEVEL DETAILED IN THE DOCUMENTS SUCH THAT THE INSTALLATION IS PROVIDED AS A COMPLETE WORKING INSTALLATION.

CONCEAL ALL WIRING AND CONDUITS. EXPOSED CABLING OR CONDUITS ARE GENERALLY NOT ACCEPTABLE. IT IS NOTED THAT CHASING AND REINSTATEMENT WILL BE REQUIRED. ENSURE ALL COMPONENTS, EQUIPMENT AND MATERIALS SUPPLIED ARE NEW, UNUSED, DESIGNED AND SELECTED TO ENSURE SATISFACTORY OPERATION UNDER VARYING ATMOSPHERIC, CLIMATIC, HUMID TROPICAL CONDITIONS WITHOUT DISTORTION AND DETERIORATION IN ANY PART AFFECTING EFFICIENCY AND RELIABILITY OF THE SYSTEMS. DESIGN AND SELECT ALL EQUIPMENT TO PROVIDE THE NECESSARY SAFETY TO HUMAN LIFE AND PROPERTY DURING OPERATION AND MAINTENANCE WITH PARTICULAR ATTENTION GIVEN TO ELECTRICAL SAFETY AND SEGREGATION PRECAUTIONS.

CHECK THE FINISHED PAINTWORK AROUND THE AREA OF EACH INSTALLATION AND TOUCH UP ALL DAMAGED PARTS AND FINISHES AFTER THE INSTALLATION OF THE ELECTRICAL SERVICES.

ALL WORKS ARE TO BE CARRIED OUT IN ACCORDANCE WITH THE BUILDER'S PROGRAM. ENSURE ALL FINAL LOCATIONS OF OUTLETS AND FITTINGS ARE CO-ORDINATED ONSITE WITH THE ARCHITECT AND ALL OTHER SERVICES, TO THE APPROVAL OF THE PROJECT MANAGER. ALLOW TO CO-ORDINATE THE FINAL LOCATION OF ALL EQUIPMENT, FITTINGS, & OUTLETS, SUCH THAT THEY ARE INSTALLED IN ACCORDANCE WITH THE AS3000 RESTRICTED ZONES, AND ARE NOT COVERED INAPPROPRIATELY.

ENSURE THAT ALL METAL SURFACES ARE SUITABLY PROTECTED AGAINST CORROSION, AND THAT ALL PLASTIC MATERIALS ARE UV STABILISED.

PROVIDE ALL MATERIALS AS NEW, AND OF THE HIGHEST CLASS AVAILABLE FOR THEIR RESPECTIVE TYPES. ENSURE ALL ASPECTS OF THE WORK ARE OF A HIGH STANDARD THROUGHOUT, AND INSTALLED IN A NEAT AND TRADESMAN LIKE MANNER, TO THE CURRENT INDUSTRY STANDARDS.

IRRESPECTIVE OF INFORMATION CONTAINED IN THE ELECTRICAL SERVICES DOCUMENTS OR IN INSTRUCTIONS, IT IS THE ELECTRICAL SUB CONTRACTOR'S RESPONSIBILITY TO ENSURE ALL ELECTRICAL SERVICES WORKS ARE INSTALLED IN ACCORDANCE WITH THE REQUIREMENTS OF THE FOLLOWING. REFER ANY DISCREPANCIES BETWEEN THE REQUIREMENTS OF THE FOLLOWING AND/OR THE ELECTRICAL SERVICES DOCUMENTS AND INSTRUCTIONS TO THE ARCHITECT FOR CLARIFICATION PRIOR TO THE PLACING OF ORDERS, FABRICATION OR INSTALLATION OF THE ITEMS/METHODS IN DISCREPANCY.

- NCC BUILDING CODE OF AUSTRALIA.
- ELECTRICITY ACT.
- ELECTRICAL SAFETY ACT.
- ERCON REQUIREMENTS.
- AS/NZS3000.
- AS3008.
- LOCAL BRIGADE.
- WORKPLACE HEALTH AND SAFETY ACT.
- TELECOMMUNICATIONS ACT.
- ACMA REQUIREMENTS.

3. AUTHORITIES

ENSURE ALL OF THE ELECTRICAL SERVICES COMPLY WITH THE REQUIREMENTS OF ALL REGULATORY AUTHORITIES HAVING JURISDICTION OVER THE SITE INCLUDING BUT NOT LIMITED TO THE FOLLOWING:

- ACMA.
- LOCAL COUNCIL.
- ERCON.
- STATE GOVERNMENT DEPARTMENT OF ENVIRONMENT AND HERITAGE.
- QLD GOVERNMENT, DIVISION OF WORKPLACE, HEALTH AND SAFETY.
- QLD FIRE AND EMERGENCY SERVICES.

4. CABLES

UNLESS OTHERWISE SPECIFIED, INSTALL AND TERMINATE CABLES IN ACCORDANCE WITH THE MANUFACTURERS' RECOMMENDATIONS. DETERMINE THE FINAL ROUTES TO SUIT THE BUILDING STRUCTURE AND SITE CONDITIONS. UNLESS NOTED OTHERWISE, PROVIDE ALL 240 VOLT POWER AND LIGHTING WIRING AS 2.5mm² TWIN & EARTH STRANDED COPPER CONDUCTORS, PVC INSULATED 0.6/1kV V75 GRADE TO AS3174, PROTECTED BY A 20 AMP CIRCUIT BREAKER. ALL CONDUIT AND FITTINGS TO BE RIGID UPVC TO AS2053, UNLESS NOTED OTHERWISE.

ALL EXPOSED CONDUITS MUST BE RUN ON 25MM STAND OFF BRACKETS TO ALLOW CLEANING BEHIND THE CONDUITS.

ALL EXPOSED CONDUITS ARE TO BE FULLY SEALED.

NOTES

5. POWER DISTRIBUTION

THE POWER DISTRIBUTION COMPONENT OF THE WORKS INCLUDES THOUGH IS NOT LIMITED TO:

- MODIFICATIONS MDB-1.
- RELOCATE THE EXISTING CIRCUITS FROM MDB-1 INTO DB-1-1.
- NEW DISTRIBUTION BOARDS DB-1-1, DB-1-2, DB-1-6, DB-2-3 AND DB-2-4.
- MODIFICATIONS TO DISTRIBUTION BOARDS DB-1-3, DB1-5 AND DB-2-2.
- NEW SUBMAINS TO THE NEW DISTRIBUTIONS BOARDS AND THE EXISTING DISTRIBUTION BOARD DB-1-5.
- REMOVE THE EXISTING DB-1-5 CABLE ACCESS WAY ON THE EXTERNAL OF THE NORTHERN BUILDING AND PROVIDE A NEW CABLE ACCESS WAY AT 2,400 AFFL TO SUPPLY DB-1-5 WITH A NEW SUBMAIN AND DN-1-2. IT IS ACCEPTABLE TO JOIN THE DB-1-5 SUBMAIN IF APPROPRIATE. - PROVIDE A NEW 3 PHASE MCB IN MDB-2 TO PROTECT A NEW 4C 25mm² Cu XLPE / PVC +E SUBMAIN SUPPLING DB-2-3.
- PROVIDE A NEW 3 PHASE MCB IN MDB-2 TO PROTECT A NEW 4C 25mm² Cu XLPE / PVC +E SUBMAIN SUPPLING DB-2-4.

ALL NEW SWITCHGEAR IS TO BE NHP TERASAKI.

PROVIDE THE DISTRIBUTION BOARD AS FOLLOWS:

- WALL MOUNTED.
- IP56 FORM 1.
- LIGHT GREY ENCLOSURE WHITE ESCUTCHEON.
- 3 POINT 92268 KEY LOCKABLE FLUSH HANDLES ON ALL DOORS.
- LIFT OFF HINGES ON ALL DOORS AND ESCUTCHEONS.
- 1/4 TURN LATCHES AND D HANDLES ON ALL ESCUTCHEONS.
- ALL SWITCHGEAR TO BE NHP/ TERASAKI.
- PROVIDE SHOP DRAWINGS FOR APPROVAL.
- 50% SPARE POLES AT PRACTICAL COMPLETION.
- ALL COMPONENTS ARE TO BE LABELLED WITH NON-STICK LABELS.

ENSURE ALL THREE PHASE CIRCUITS ARE PROVIDED WITH CORRECT PHASE ROTATION.

ENSURE ALL OUTLETS AND ISOLATORS ARE POSITIONED SUCH THAT THEY ARE NOT COVERED BY THE EQUIPMENT. THE FINAL POSITION OF ALL OUTLETS AND ISOLATORS ARE TO BE CONFIRMED ON SITE BY THE TENANTS REPRESENTATIVE.

THE POWER DISTRIBUTION COMPONENT OF THIS CONTRACT INCLUDES, BUT IS NOT LIMITED TO THE FOLLOWING EXTENT OF WORK:

- POWER DISTRIBUTION.
- SUBMAINS.
- DISTRIBUTION BOARDS.
- CABLE ACCESS WAYS.
- CIRCUITS.
- ISOLATORS AND OUTLETS.
- TESTING AND COMMISSIONING.
- REMOVAL OF ALL EXISTING ELECTRICAL SERVICE THAT BECOME REDUNDANT DUE TO THE WORKS.
- THERMOSCAN ALL EXISTING AND NEW SWITCHBOARDS ONE WEEK AFTER PRACTICAL COMPLETION.

PROVIDE A CHART RECORDING OF THE MAINS CURRENT, VOLTAGE, FREQUENCY FOR THE FIRST 14 DAYS FOLLOWING PRACTICAL COMPLETION AND SUBMIT THE THERMOSCAN CHART RECORDING AND FOR APPROVAL.

6. LIGHTING

THE LIGHTING COMPONENT OF THE ELECTRICAL SERVICES SUB-CONTRACT INCLUDES ALL OF THE INTERNAL AND EXTERNAL LIGHT FITTINGS, LAMPS AND ACCESSORIES. PROVIDE ALL NECESSARY ACCESSORIES TO FACILITATE THE COMPLETE LIGHTING INSTALLATION. THE LIGHTING COMPONENT OF THE ELECTRICAL SERVICES SUB-CONTRACT INCLUDES THOUGH IT IS NOT LIMITED TO THE FOLLOWING EXTENT OF WORK:

- INTERNAL AND EXTERNAL LIGHTING.
- EMERGENCY AND EXIT LIGHTING.
- EARTHING OF THE LIGHTING INSTALLATION.
- LIGHTING CONTROL.
- LIGHTING SUBCIRCUITS.
- TESTING AND COMMISSIONING.

PROVIDE A SINGLE POINT EMERGENCY LIGHTING SYSTEM THAT COMPLIES WITH THE LATEST ISSUE OF ALL PARTS AS2293 AND THE RELEVANT PARTS OF THE NCC BCA. INSTALL EMERGENCY LIGHT FITTINGS NOMINATED AS MAINTAINED WITH THE LAMP PERMANENTLY ON SUPPLIED VIA AN UNSWITCHED ACTIVE MAINS SUPPLY WHEN THE MAINS SUPPLY IS AVAILABLE. WHEN THE MAINS SUPPLY IS NOT AVAILABLE, THE LAMP IS TO REMAIN ON SUPPLIED BY THE EMERGENCY PACK. SINGLE LAMP MAINTAINED EMERGENCY LIGHTS ARE NOT SWITCHED WITH THE LOCAL GENERAL AREA LIGHTING. (THE LAMP IS ALWAYS ON.)

INSTALL EMERGENCY LIGHT FITTINGS NOMINATED AS NON-MAINTAINED AS FOLLOWS:

- IF THE FITTING IS NOT BEING SWITCHED, THE LAMP IS TO REMAIN OFF WHEN THE MAINS SUPPLY IS AVAILABLE. WHEN THE MAINS SUPPLY IS NOT AVAILABLE THE LAMP IS TO BE SWITCHED ON SUPPLIED BY THE EMERGENCY PACK. UNSWITCHED SINGLE LAMP NON-MAINTAINED EMERGENCY LIGHTS ARE NOT SWITCHED WITH THE LOCAL GENERAL AREA LIGHTING. (THE LAMP IS ON ONLY WHEN THE MAINS SUPPLY IS NOT AVAILABLE.)
- IF THE FITTING IS BEING SWITCHED, THE LAMP IS TO BE SUPPLIED AND CONTROLLED WITH THE LOCAL GENERAL AREA LIGHTING WHEN THE MAINS SUPPLY IS AVAILABLE. WHEN THE MAINS SUPPLY IS NOT AVAILABLE THE LAMP IS TO BE SWITCHED ON, SUPPLIED BY THE EMERGENCY PACK. (THE LAMP IS ON WHEN TURNED ON WITH THE LOCAL GENERAL LIGHTING OR THE MAIN SUPPLY IS NOT AVAILABLE.)

7. COMMUNICATIONS CABLING

THE COMMUNICATIONS CABLING COMPONENT OF THIS CONTRACT INCLUDES THE PROVISION OF A NEW COMMUNICATIONS RACK CR-B IN BUILDING 1 NORTH. PROVIDE TWO CAT 6 RJ45 TERMINATED TIE CABLES BETWEEN THE EXITING COMMUNICATIONS RACK CR-A AND THE NEW CR-B

PROVIDE THE COMMUNICATIONS CABLING COMPONENT OF THIS CONTRACT AS A COMMSCOPE OR MOLEX CAT 6 INSTALLATION WITH A 15 YEAR MANUFACTURERS PERFORMANCE WARRANTY. THE COMMUNICATIONS CABLING COMPONENT OF THIS CONTRACT INCLUDES, BUT IS NOT LIMITED TO THE FOLLOWING EXTENT OF WORK:

- COMMUNICATIONS RACK.
- PATCH PANELS.
- CAT 6 COMMUNICATIONS OUTLETS AND CABLING.
- CABLE ACCESS WAYS.
- TESTING AND COMMISSIONING.

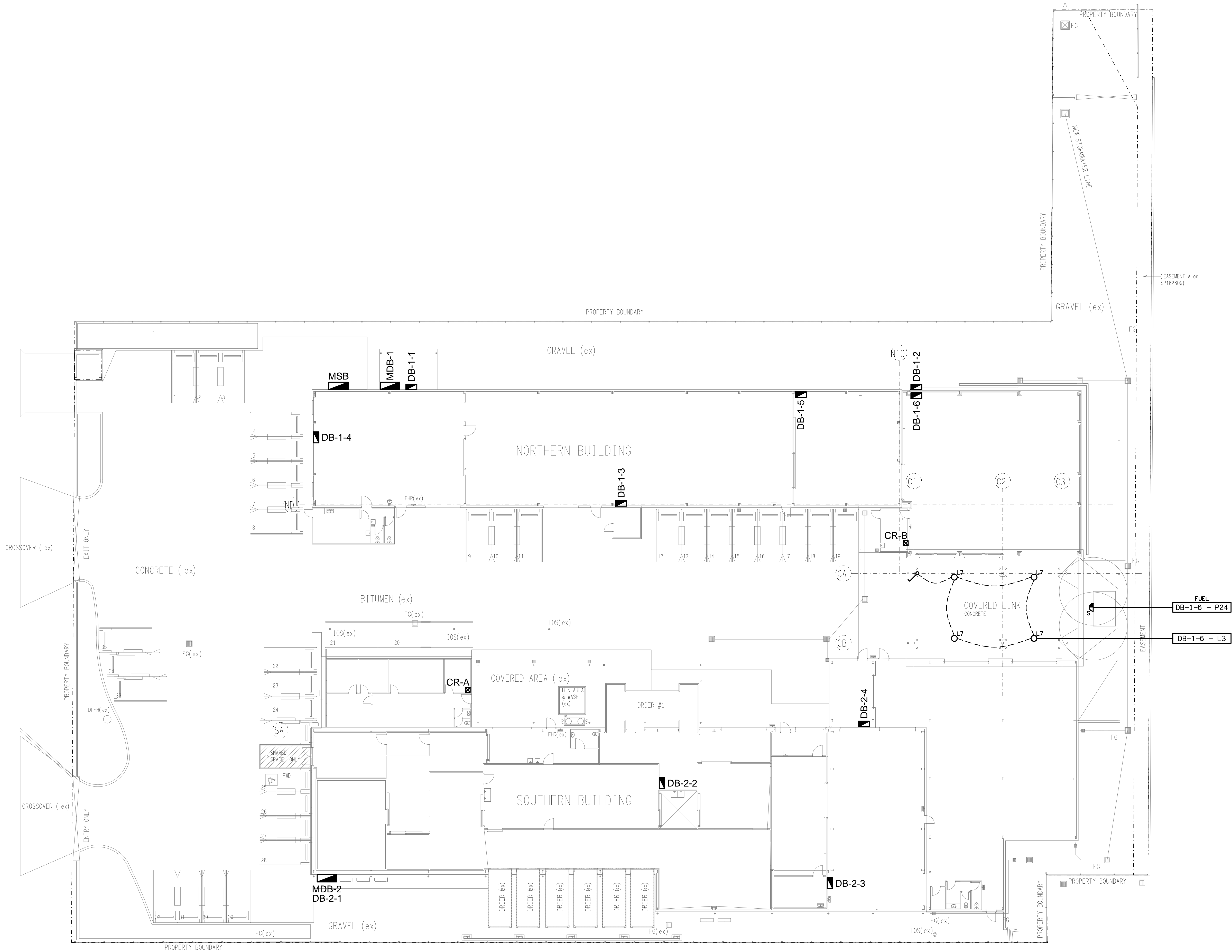
NOTES

8. ABBREVIATIONS

- A - AMP CURRENT RATING
- AB - MOUNT ABOVE BENCH.
- AFFL - ABOVE FINISHED FLOOR LEVEL.
- BB - MOUNT BELOW BENCH.
- BH - MOUNT ON BULKHEAD.
- CEIL - MOUNT ON CEILING.
- CS - MOUNT WITHIN CEILING SPACE.
- C/W - COMPLETE WITH.
- HWS - HOT WATER SYSTEM.
- MCB - MINIATURE CIRCUIT BREAKER.
- MCCB - MOLDED CASE CIRCUIT BREAKER.
- MDB - MAIN DISTRIBUTION BOARD.
- MEN - MULTIPLE EARTH NEUTRAL LINK.
- MSB - MAIN SWITCHBOARD.
- MSSB - MECHANICAL SERVICES SWITCHBOARD.
- MW - MICROWAVE.
- N - NEON / LED INDICATOR WHEN ON.
- NTS - NOT TO SCALE.
- RCBO - CIRCUIT PROTECTED VIA A 30mA RESIDUAL CURRENT DEVICE INTEGRAL TO THE CIRCUIT BREAKER.
- REF - REFRIGERATOR.
- UNO - UNLESS NOTED OTHERWISE.
- 500 - NUMBER DENOTES MOUNTING HEIGHT AFFL.

ELECTRICAL DESIGN GROUP BRISBANE PTY LTD ACN 092 710 793		THE COPYRIGHT OF THIS DRAWING REMAINS THE PROPERTY OF THE ELECTRICAL DESIGN GROUP.		PROJECT: REWARD PET FOODS, WILSONTON		B TENDER 18/12/2024	
TRADING AS: ELECTRICAL DESIGN GROUP		USE FIGURED DIMENSIONS IN PREFERENCE TO SCALE.		DRAWING: ELECTRICAL SERVICES NOTES		REV: DESCRIPTION: DATE:	
ALL DIMENSIONS TO BE VERIFIED ONSITE.		ELECTRICAL DESIGN GROUP BRISBANE GOLD COAST		41-45 INDUSTRIAL AVENUE, WILSONTON TOOWOOMBA		SCALE: NOT TO SCALE AT A1	
P.O.Box 15, Sherwood Q.4075 Phone: (07) 3278 4375 Email: brisbane@edg.net.au Web: www.edg.net.au		PROJECT NO: DRAWING NO: REVISION:		C3351a E02 B			

INDUSTRIAL AVENUE



ELECTRICAL DESIGN GROUP BRISBANE
PTY LTD
ACN 092 710 793
TRADING AS:
ELECTRICAL DESIGN GROUP

THE COPYRIGHT OF THIS DRAWING
REMAINS THE PROPERTY OF THE
ELECTRICAL DESIGN GROUP.
USE FIGURED DIMENSIONS
IN PREFERENCE TO SCALE.
ALL DIMENSIONS TO BE
VERIFIED ONSITE.

ELECTRICAL DESIGN GROUP
ELECTRICAL BUILDING SERVICES CONSULTANTS
BRISBANE GOLD COAST

P.O.Box 15, Sherwood Q.4075
Phone: (07) 3278 4375
Email: brisbane@edg.net.au
Web: www.edg.net.au

PROJECT:
REWARD PET FOODS, WILSONTON

41-45 INDUSTRIAL AVENUE, WILSONTON TOOWOOMBA

B	TENDER	18/12/2024
REV.	DESCRIPTION:	DATE:

DRAWING:
**ELECTRICAL SERVICES
SITE PLAN**

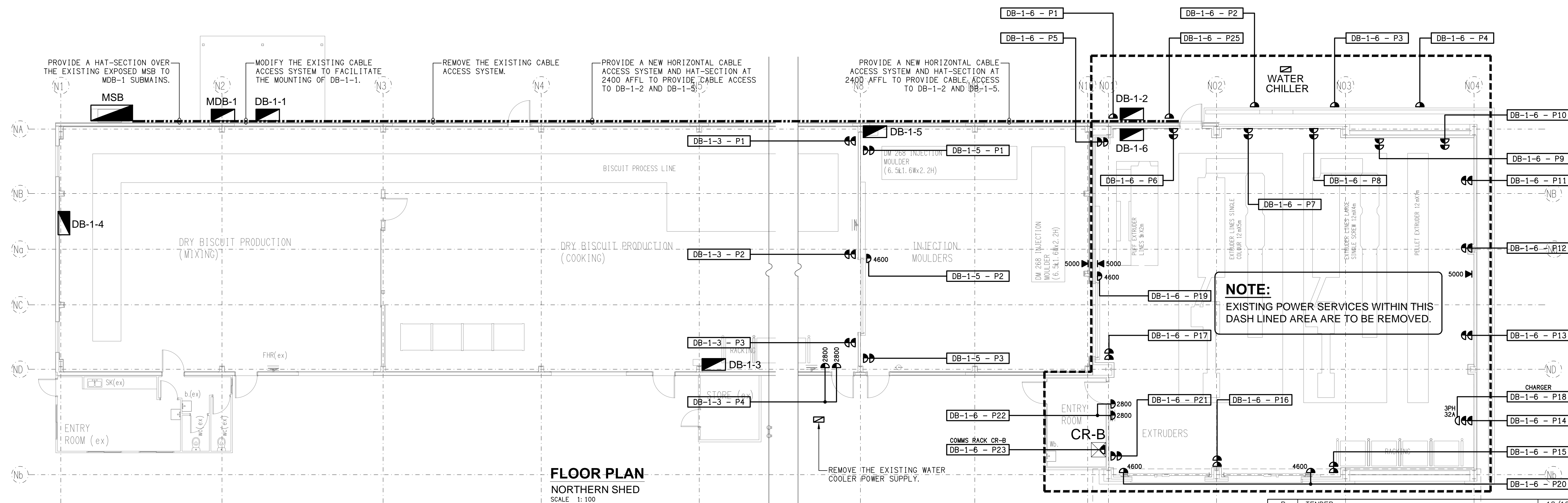
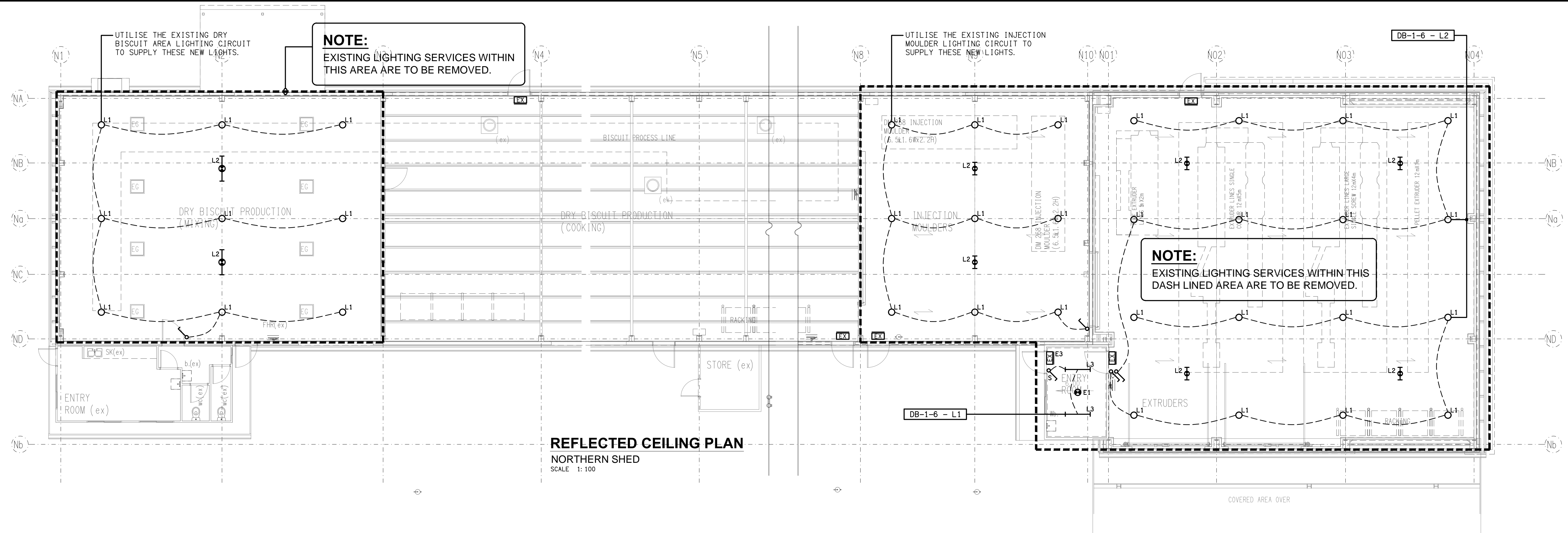
SCALE:
1:200

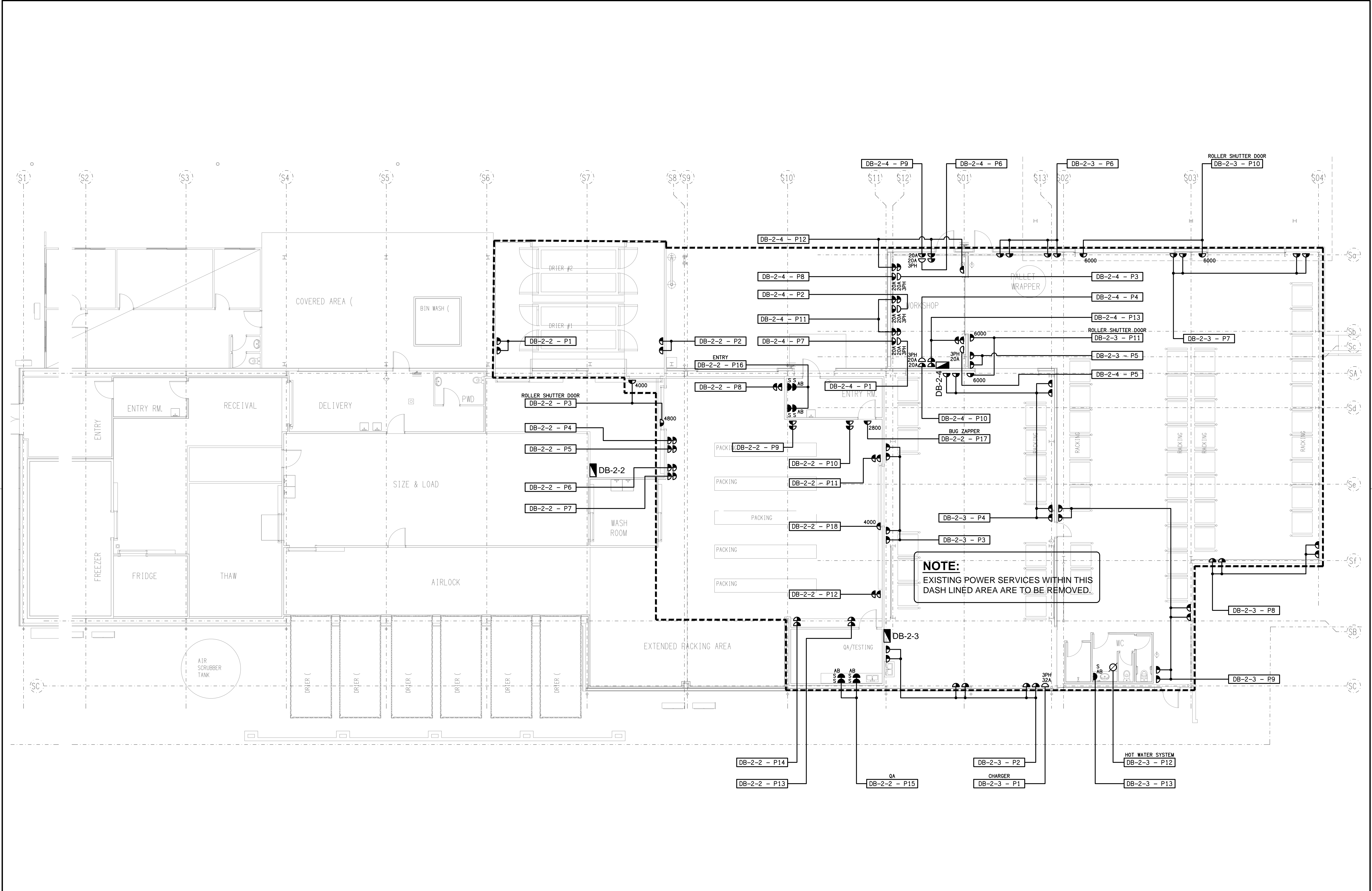
AT A1

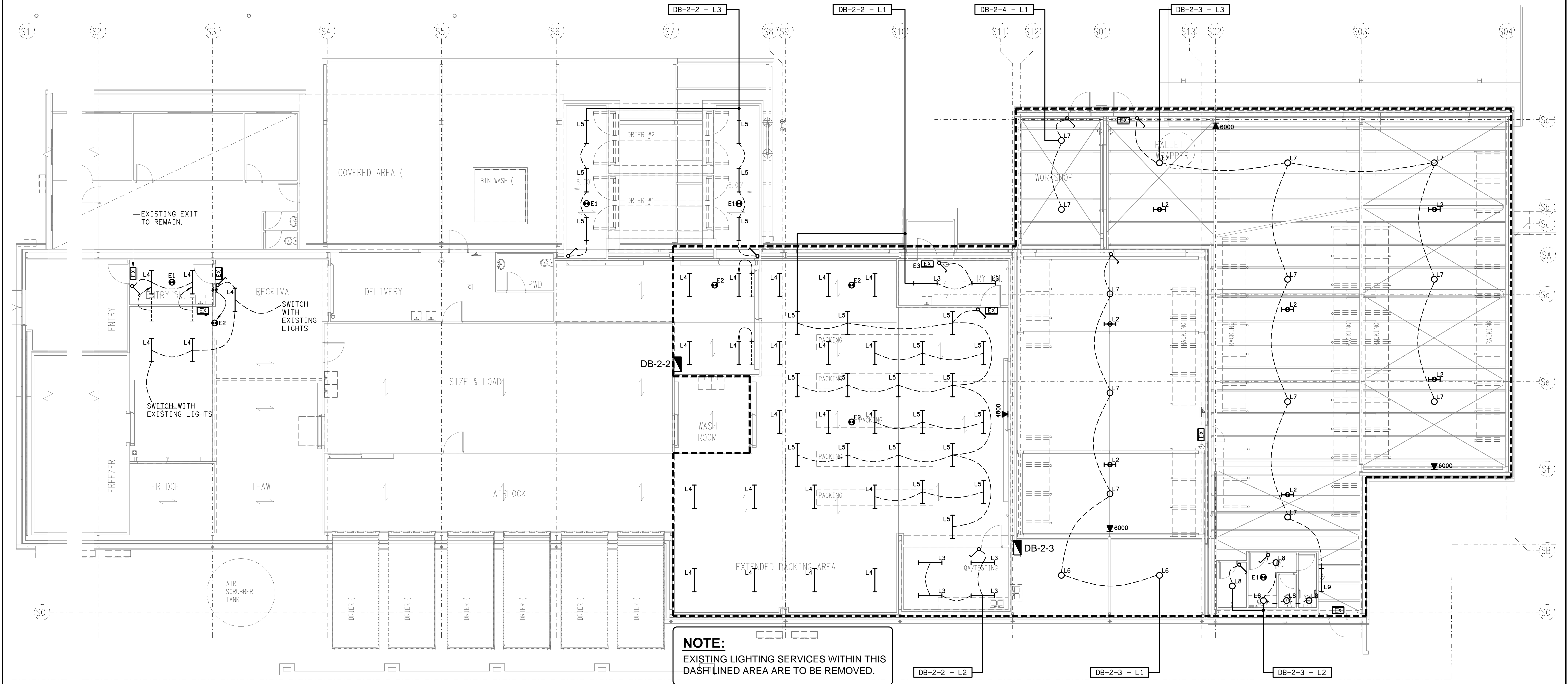
PROJECT NO:
C3351a

DRAWING NO:
E03

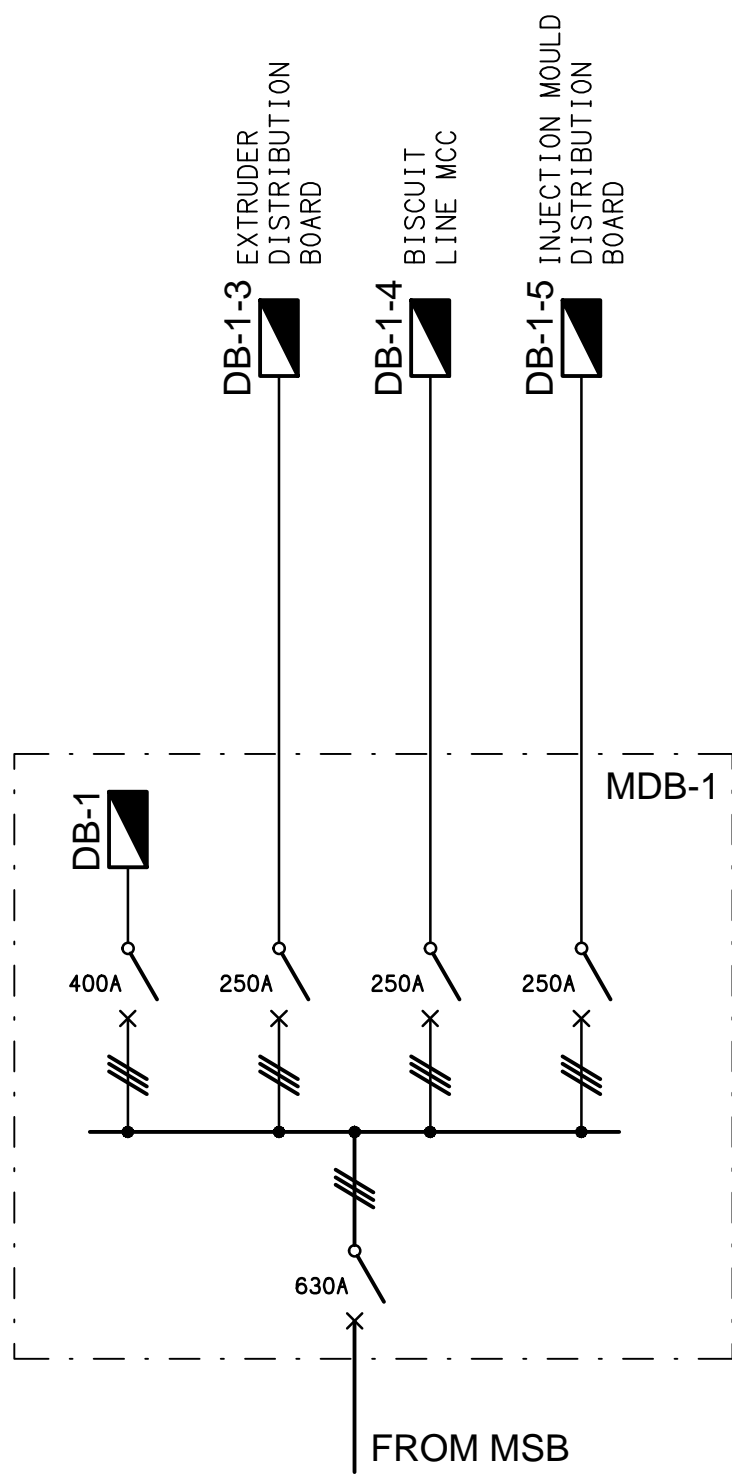
REVISION:
B



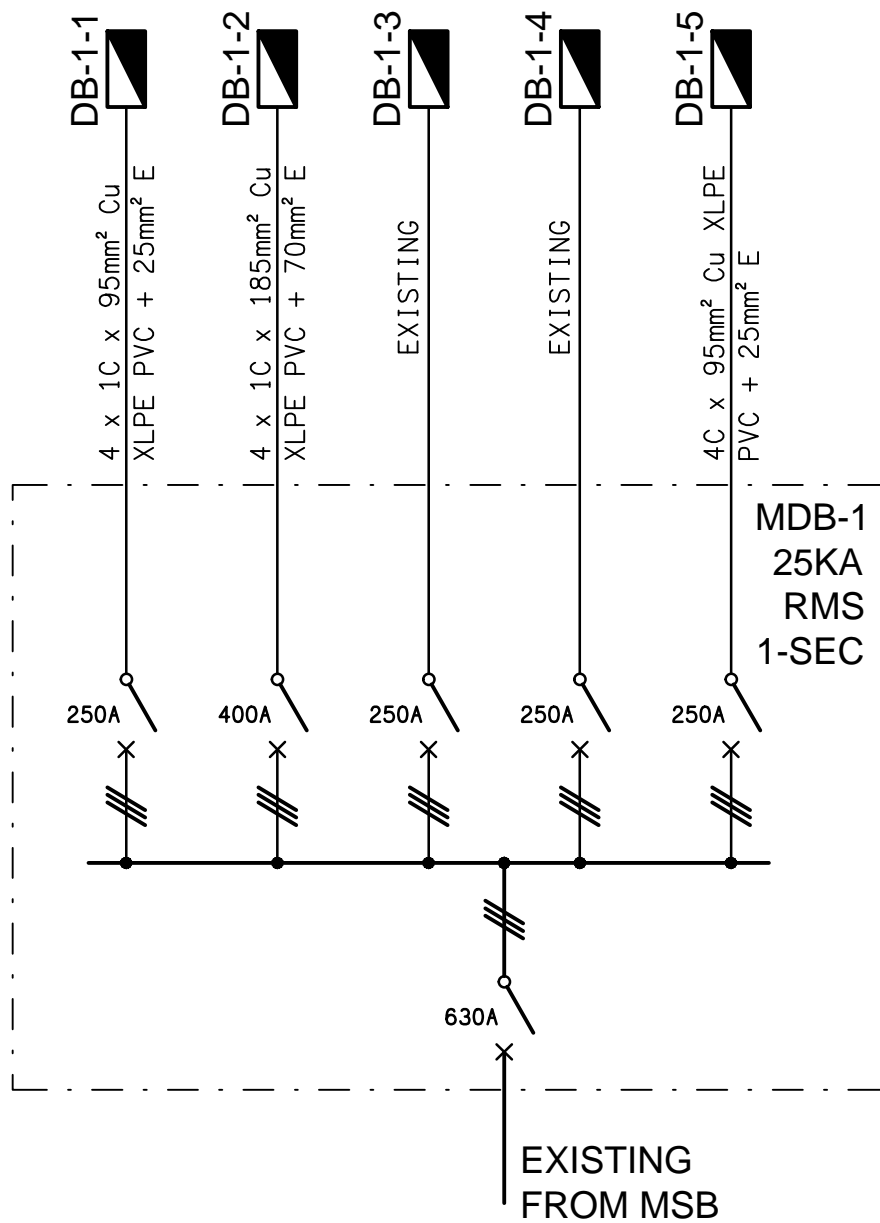




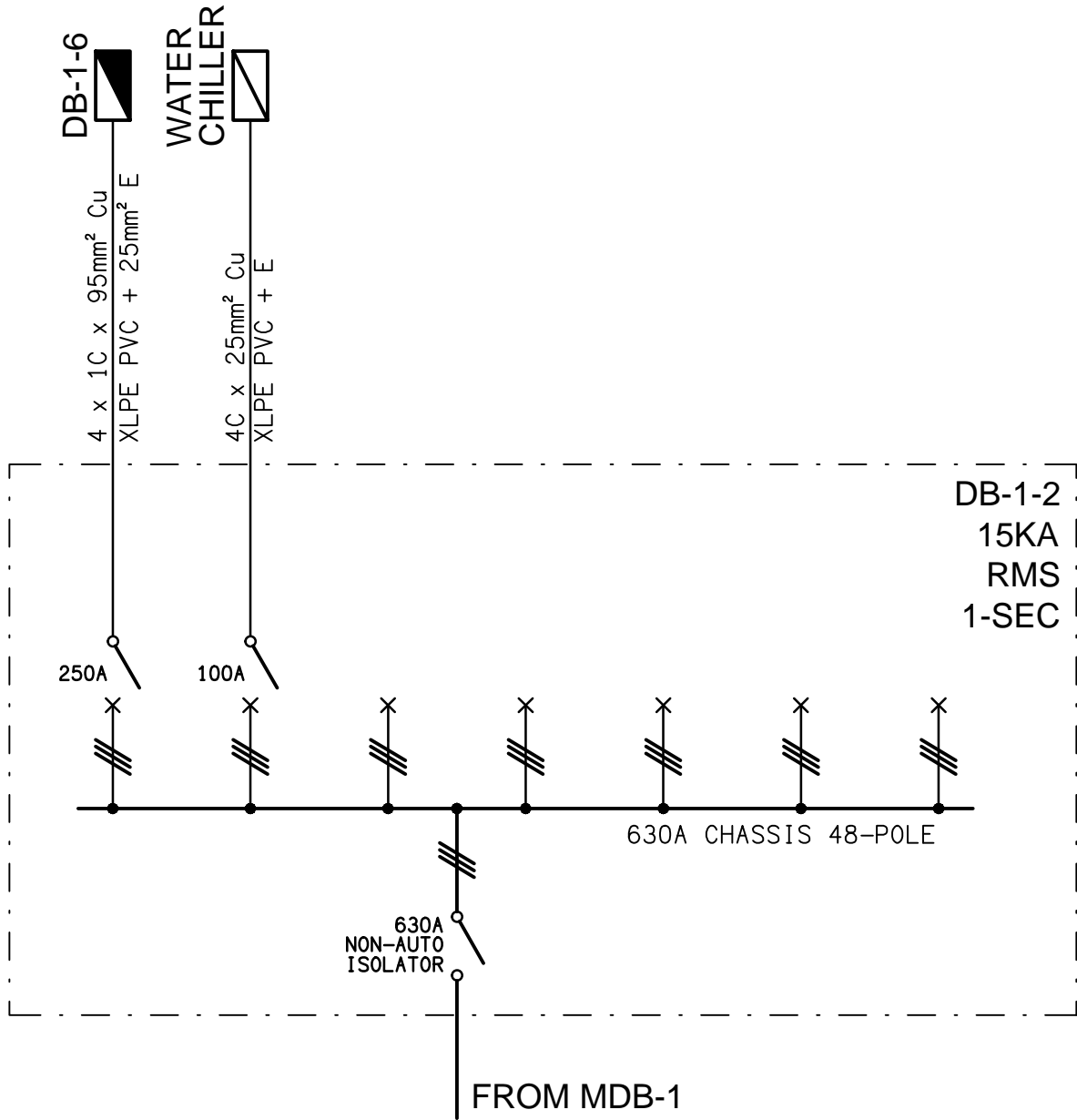
NOTE:
EXISTING LIGHTING SERVICES WITHIN THIS
DASH LINED AREA ARE TO BE REMOVED.



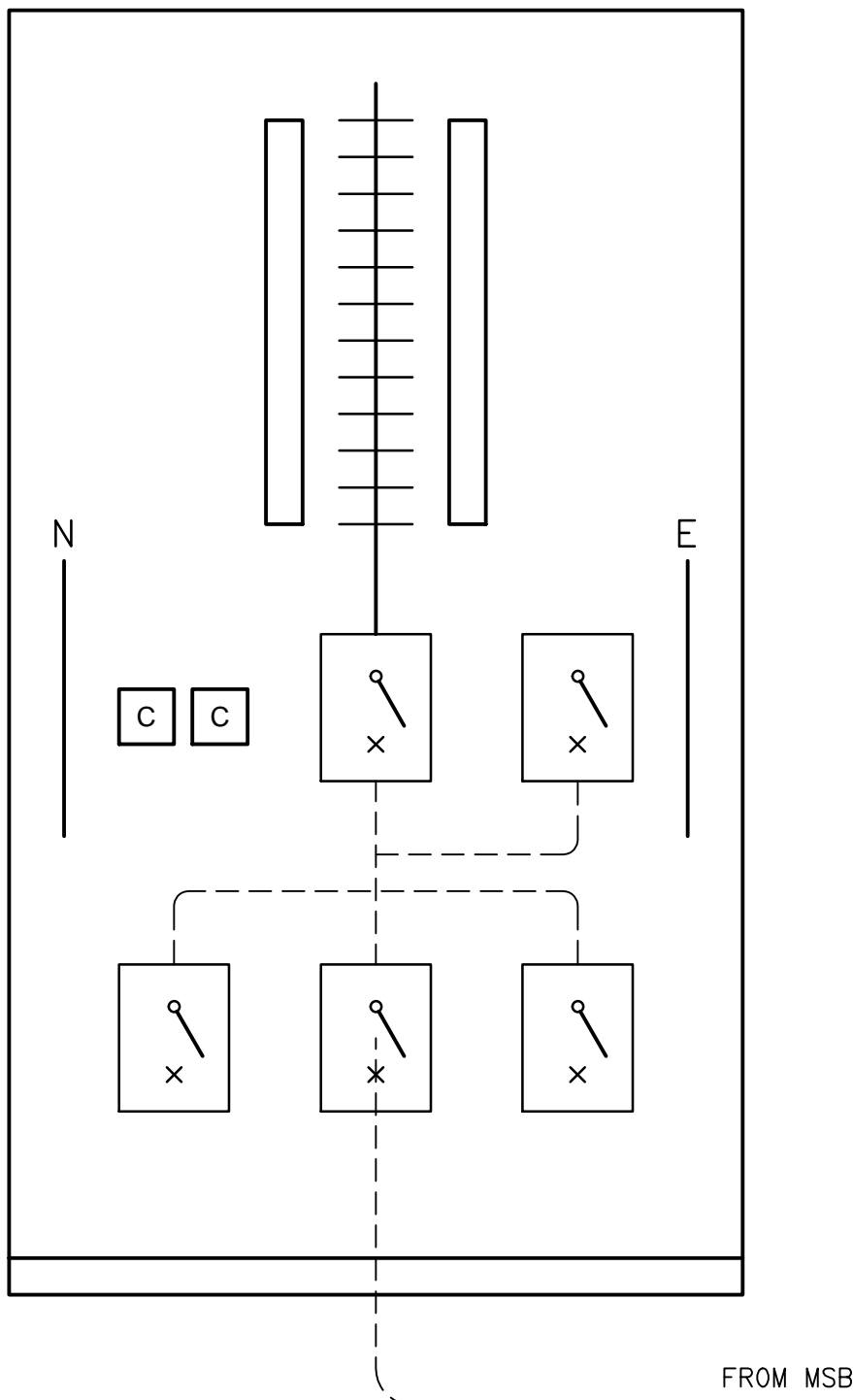
SCHEMATIC
EXISTING MDB-1 CONFIGURATION
NOT TO SCALE



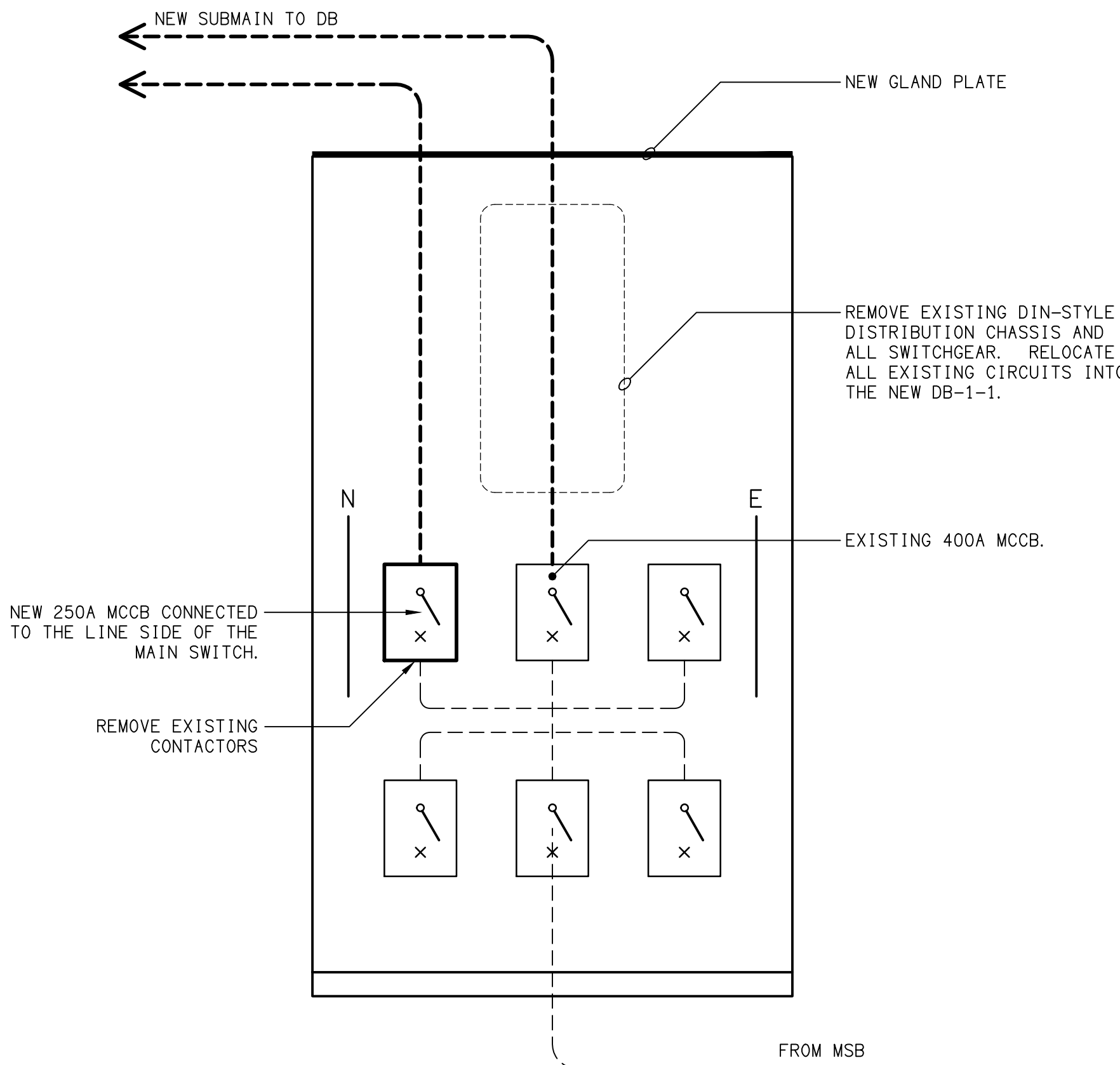
SCHEMATIC
PROPOSED MDB-1 CONFIGURATION
NOT TO SCALE



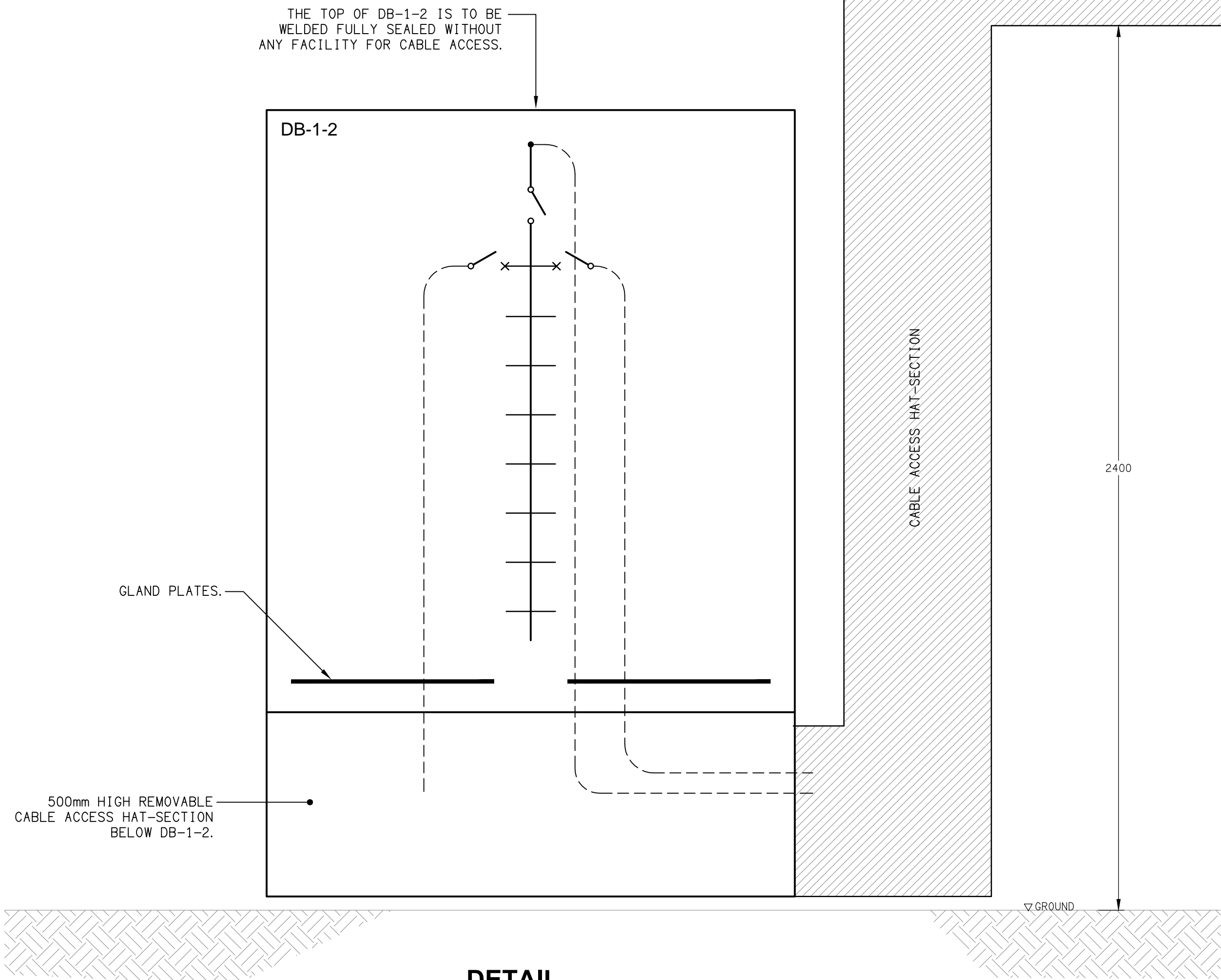
SCHEMATIC
PROPOSED DB-1-2 CONFIGURATION
NOT TO SCALE



DETAIL
EXISTING MDB-1 CONFIGURATION
NOT TO SCALE



DETAIL
PROPOSED MDB-1 CONFIGURATION
NOT TO SCALE



DETAIL
PROPOSED DB-1-2 CONFIGURATION
NOT TO SCALE