



# ELECTRICAL DESIGN GROUP

ELECTRICAL BUILDING SERVICES CONSULTANTS

P.O. Box 15, SHERWOOD Q. 4075

Phone: (07) 3278 4375

Website: www.edg.net.au Email: brisbane@edg.net.au

C3358a - BRACKEN RIDGE TAVERN

C3358a-0001(A).xls

## ELECTRICAL SERVICES CONTRACT DOCUMENT SCHEDULE

REVISION A - 28 FEBRUARY 2025

ISSUING INFORMATION				DATE OF ISSUE							
				DAY	28						
				MONTH	02						
				YEAR	25						
REASON FOR ISSUE				P							
A = APPROVAL				C = CONSTRUCTION				AC = AS CONSTRUCTED			
				P = PRELIMINARY				T = TENDER			

DISTRIBUTION				NUMBER OF COPIES							
WWW.EDG.NET.AU				1E							
KP ARCHITECTS				1E							
FARDOULYS CONSTRUCTION				1E							
P = PRINT				T = TRACING				D = DISC			
				E = EMAIL				F = FAX			

DOCUMENTS				REVISION							
C3358a-E01.dwg	LEGEND	A									
C3358a-E02.dwg	NOTES	A									
C3358a-E03.dwg	DETAILS	A									
C3358a-E04.dwg	SITE PLAN	A									
C3358a-E05.dwg	PART 1 FLOOR PLAN	A									
C3358a-E06.dwg	PART 2 FLOOR PLAN	A									
C3358a-E07.dwg	PART 2 FLOOR PLAN DETAILS	A									
C3358a-E08.dwg	PART 1 REFLECTED CEILING PLAN	A									
C3358a-E09.dwg	PART 2 REFLECTED CEILING PLAN	A									
C3358a-E10.dwg	PART 2 JOINERY LIGHTING DETAILS	A									
C3358a-0001.xls	CONTRACT DOCUMENT SCHEDULE	A									
C3358a-0002.xls	EQUIPMENT SCHEDULE	A									
C3358a-0003.xls	STANDARDS SCHEDULE										
C3358a-0004.xls	LIGHTING CONTROL SCHEDULE										
C3358a-0005.xls	DISTRIBUTION BOARD DB-1 SCHEDULE	A									
C3358a-0006.xls	DISTRIBUTION BOARD DB-B SCHEDULE	A									
C3358a-0007.xls	DISTRIBUTION BOARD DB-C SCHEDULE	A									
C3358a-0008.xls	DISTRIBUTION BOARD DB-F SCHEDULE	A									
C3358a-0009.xls	DISTRIBUTION BOARD DB-G SCHEDULE	A									
C3358a-0001.zip	FITTING AND OUTLET DATASHEETS										



# ELECTRICAL DESIGN GROUP

ELECTRICAL BUILDING SERVICES CONSULTANTS

P.O. Box 15, SHERWOOD Q. 4075

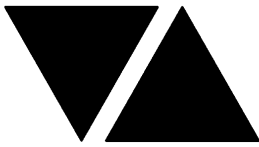
Phone: (07) 3278 4375 Fax: (07) 3716 0222

Web Site: [www.edg.net.au](http://www.edg.net.au) Email: [brisbane@edg.net.au](mailto:brisbane@edg.net.au)

**C3358a - BRACKEN RIDGE TAVERN**  
**ELECTRICAL EQUIPMENT SCHEDULE**  
**REVISION A - 28 FEBRUARY 2025**

**C3358a-0002(A).xls**

THE LIGHT FITTING SUPPLIER CONTACT DETAILS MAY BE AVAILABLE ON THE EDG WEBSITE VIA THE FOLLOWING LINK <a href="http://www.edg.net.au/Links/Lighting.htm">www.edg.net.au/Links/Lighting.htm</a>					
TYPE	LAMPS	DESCRIPTION	COLOUR / ACCESSORY	CATALOGUE No	REV
L1	14W 4000K LED	300 X 600 LAY IN FLAT PLATE LED FITTING C/W REMOTE DRIVER AND A PB MOUNTING KIT	WHITE TRIM	GAMMA ILLUMINATION AXIS 1549-4K-34W PB	A
L2	LED	CEILING MOUNTED MOVING HEAD COLOUR WHEEL ADJUSTABLE FOCUS AND REMOTE RF CONTROL SYSTEM	BLACK	CHAUVET DJ INTIMIDATOR SPOT 360X	A
L3	36W LED 4000K	1200 LONG SURFACE MOUNTED IP65 DIFFUSED BATTEN C/W INTEGRAL ELECTRONIC CONTROL GEAR	LIGHT GREY	EQUAL TO GAMMA STORM 1558-CCT-36W	A
L4	EXISTING CARPARK POLE LIGHT TO BE MODIFIED. PROVIDE THE POLE WITH A NEW SINGLE FITTING MOUNTING BRACKET / ARM TO ALLOW THE EXISTING FITTING FACING AWAY FROM THE BUILDING TO BE RECONNECTED. THE EXISTING FITTING FACING THE BUILDING IS TO BE REMOVED AND USED ON THE NEW L5 FITTING.				A
L5	PROVIDE A NEW CARPARK LIGHTING POLE THAT MATCHES THE MODIFIED EXISTING ADJACENT L4 POLE AND UTILISE THE SECOND FITTING RECOVERED FROM THE L4 POLE.				A
L6	PROVIDE A NEW TWIN FITTING CARPARK LIGHTING POLE THAT MATCHES THE EXISTING ADJACENT TWIN FITTING POLE.				A
RDL1	TO BE CONFIRMED	RECESSED DOWNLIGHT	WHITE	TO BE CONFIRMED	A
RDL2	TO BE CONFIRMED	RECESSED DOWNLIGHT	WHITE	TO BE CONFIRMED	A
RDL3	TO BE CONFIRMED	RECESSED DOWNLIGHT	WHITE	TO BE CONFIRMED	A
RDL4	TO BE CONFIRMED	RECESSED DOWNLIGHT	BLACK	TO BE CONFIRMED	A
SDL1	TO BE CONFIRMED	SURFACE MOUNTED 25MM DIA CYLINDER SHADE C/W 200DIA BUBBLE GLASS	TO BE CONFIRMED	LUMEN 8 CUSTOM	A
SDL2	TO BE CONFIRMED	SURFACE MOUNTED CAN DOWNLIGHT	WHITE	TO BE CONFIRMED	A



# ELECTRICAL DESIGN GROUP

ELECTRICAL BUILDING SERVICES CONSULTANTS

P.O. Box 15, SHERWOOD Q. 4075

Phone: (07) 3278 4375 Fax: (07) 3716 0222

Web Site: [www.edg.net.au](http://www.edg.net.au) Email: [brisbane@edg.net.au](mailto:brisbane@edg.net.au)

**C3358a - BRACKEN RIDGE TAVERN**  
**ELECTRICAL EQUIPMENT SCHEDULE**  
**REVISION A - 28 FEBRUARY 2025**

**C3358a-0002(A).xls**

THE LIGHT FITTING SUPPLIER CONTACT DETAILS MAY BE AVAILABLE ON THE EDG WEBSITE VIA THE FOLLOWING LINK <a href="http://www.edg.net.au/Links/Lighting.htm">www.edg.net.au/Links/Lighting.htm</a>					
TYPE	LAMPS	DESCRIPTION	COLOUR / ACCESSORY	CATALOGUE No	REV
SDL3	TO BE CONFIRMED	SURFACE MOUNTED SPOT LIGHT	TO BE CONFIRMED	TO BE CONFIRMED	A
SDL4	TO BE CONFIRMED	SURFACE MOUNTED 800 DAI BALL LIGHT	NA	TO BE CONFIRMED	A
SDL5	TO BE CONFIRMED	SURFACE MOUNTED SPOT LIGHT	TO BE CONFIRMED	TO BE CONFIRMED	A
SDL6	TO BE CONFIRMED	SURFACE MOUNTED ADJUSTABLE SPOT LIGHT	WHITE	TO BE CONFIRMED	A
SDL7	TO BE CONFIRMED	SURFACE MOUNTED CAN DOWNLIGHT	BLACK	TO BE CONFIRMED	A
WL1	TO BE CONFIRMED	WALL MOUNTED 150H X 310W X 115 DEEP IP65 WALL LIGHT CONFIRM THE MOUNTING HEIGHT ON SITE WITH THE ARCHITECT	WHITE	LIGHTING COLLECTIVE DOME ALUMINIUM	A
WL2	6W FROSTED 2700K 240VOLT E27 LED	WALL MOUNTED 23 DIA X 65DEEP WALL LIGHT CONFIRM THE MOUNTING HEIGHT ON SITE WITH THE ARCHITECT	ANTIQUE BRASS	CRETE STUDIO SMALL HAKEA SCONCE	A
WL3	2 X 2700K 240VOLT E14 LED	WALL MOUNTED 23 DIA X 65DEEP WALL LIGHT CONFIRM THE MOUNTING HEIGHT ON SITE WITH THE ARCHITECT	ANTIQUE BRASS	ZEST LIGHTING DINA ANTIQUE BRASS PICTURE WALL LIGHT	A
PL1	TO BE CONFIRMED	ALLOW TO ASSEMBLE AND INSTALL. CONFIRM SUSPENSION HEIGHT ON SITE WITH THE ARCHITECT	TO BE CONFIRMED	ALLOW A PC SUM OF \$1000.00 PLUS GST FOR THE SUPPLY OF EACH PL1 FITTING	A
CAT	LED 2700K	PROVIDE A 316 STAINLESS STEEL WIRE SUPPORT SYSTEM WITH SHADED CATENARY FESTOON LIGHTS WITH THE SHADES SPACED EVENLY APPROXIMATELY 1000 APART.	WHITE	LUMEN 8 SUSPENDED FESTOON C/W METAL SHARE	A
UP1	8W 3000K LED	GARDEN STAKE FITTING C/W REMOTE DALI DIMMABLE DRIVER MOUNT THE FITTING IN THE GARDEN AS PER THE ARCHITECTURAL DETAIL IT IS ACCEPTABLE TO SUPPLY MULTIPLE UP1 FITTINGS ON THE SAME CHANNEL FROM A SINGLE SUITABLY SIZED DRIVER / POWER SUPPLY	BLACK	GAMMA ILLUMINATION RULO 1373- FL-8W- 3K	A



# ELECTRICAL DESIGN GROUP

ELECTRICAL BUILDING SERVICES CONSULTANTS

P.O. Box 15, SHERWOOD Q. 4075

Phone: (07) 3278 4375 Fax: (07) 3716 0222

Web Site: [www.edg.net.au](http://www.edg.net.au) Email: [brisbane@edg.net.au](mailto:brisbane@edg.net.au)

**C3358a - BRACKEN RIDGE TAVERN**  
**ELECTRICAL EQUIPMENT SCHEDULE**  
**REVISION A - 28 FEBRUARY 2025**

**C3358a-0002(A).xls**

THE LIGHT FITTING SUPPLIER CONTACT DETAILS MAY BE AVAILABLE ON THE EDG WEBSITE VIA THE FOLLOWING LINK <a href="http://www.edg.net.au/Links/Lighting.htm">www.edg.net.au/Links/Lighting.htm</a>					
TYPE	LAMPS	DESCRIPTION	COLOUR / ACCESSORY	CATALOGUE No	REV
H1		ALLOW TO CONNECT THE LINEAR HEAT LAMP PROVIDED AS PART OF THE KITCHEN EQUIPMENT / STAINLESS STEEL WORKS.			A
H2		ALLOW TO CONNECT THE LINEAR HEAT LAMP PROVIDED AS PART OF THE KITCHEN EQUIPMENT / STAINLESS STEEL WORKS.			A
H3		CEILING MOUNTED ADJUSTABLE 2300W HEAT LAMP C/W CUSTOM SUPPORT / SUSPENSIONS AS REQUIRED	DESIGNER COLOUR ANTIQUE COPPER	HATCO DL-R-R-700 PLUS 100W IR LAMP	A
HE/W	3400W	BULKHEAD MOUNTED 3400W HEATER C/W ADJUSTABLE MOUNT BRACKET AS REQUIRED REFER TO THE LIGHTING CONTROL SCHEDULE FOR ADDITIONAL CONTROL REQUIREMENTS	WHITE	BROMIC PLATINUM SMART HEAT ELECTRIC 11 2620248	A
CEILING FAN TYPE 1 CF1		2180 DIA CEILING FAN C/W 450 DROP AND A REMOTE	WHITE	HUNTER PACIFIC THE BIG FAN V2 DC CEILING FAN	A
TABLE LAMP TYPE 1 TL1		TO BE CONFIRMED			A
S1	880LM /M 3000K 24V LED	LED STRIP LIGHT IN A SCREW FIXED EXTRUSION C/W OPAL DIFFUSER MOUNTED IN THE BAR COUNTER PELMET AS PER THE ARCHITECTURAL DETAIL. PROVIDE EACH GROUP OF S1 STRIP WITH REMOTE DALI DIMMABLE POWER SUPPLIES AS REQUIRED LOCATE THE POWER SUPPLIES IN A CONCEALED ACCESSIBLE POSITION NOTED ON THE AS CONSTRUCTED DOCUMENTS.	NATURAL	MELEC ML-ALU-1407-2M - ML-VLCRI-14.4-WW	A
S2	880LM /M 3000K 24V LED	THREE HORIZONTAL RUNS OF LED STRIP LIGHT IN A SCREW FIXED EXTRUSION C/W OPAL DIFFUSER MOUNTED IN THE RAE BAR JOINERY AS PER THE ARCHITECTURAL DETAIL. PROVIDE EACH GROUP OF S2 STRIP WITH REMOTE DALI DIMMABLE POWER SUPPLIES AS REQUIRED LOCATE THE POWER SUPPLIES IN A CONCEALED ACCESSIBLE POSITION NOTED ON THE AS CONSTRUCTED DOCUMENTS.	NATURAL	MELEC ML-ALU-1407-2M - ML-VLCRI-14.4-WW	A
S3	880LM /M 3000K 24V LED	LED STRIP LIGHT IN A SCREW FIXED EXTRUSION C/W OPAL DIFFUSER MOUNTED IN THE CENTRAL DISPLAY AS PER THE ARCHITECTURAL DETAIL. PROVIDE EACH GROUP OF S3 STRIP WITH REMOTE DALI DIMMABLE POWER SUPPLIES AS REQUIRED LOCATE THE POWER SUPPLIES IN A CONCEALED ACCESSIBLE POSITION NOTED ON THE AS CONSTRUCTED DOCUMENTS.	NATURAL	MELEC ML-ALU-1407-2M - ML-VLCRI-14.4-WW	A



# ELECTRICAL DESIGN GROUP

ELECTRICAL BUILDING SERVICES CONSULTANTS

P.O. Box 15, SHERWOOD Q. 4075

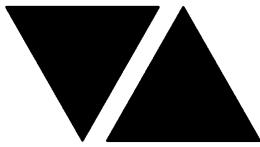
Phone: (07) 3278 4375 Fax: (07) 3716 0222

Web Site: [www.edg.net.au](http://www.edg.net.au) Email: [brisbane@edg.net.au](mailto:brisbane@edg.net.au)

**C3358a - BRACKEN RIDGE TAVERN**  
**ELECTRICAL EQUIPMENT SCHEDULE**  
**REVISION A - 28 FEBRUARY 2025**

**C3358a-0002(A).xls**

THE LIGHT FITTING SUPPLIER CONTACT DETAILS MAY BE AVAILABLE ON THE EDG WEBSITE VIA THE FOLLOWING LINK <a href="http://www.edg.net.au/Links/Lighting.htm">www.edg.net.au/Links/Lighting.htm</a>					
TYPE	LAMPS	DESCRIPTION	COLOUR / ACCESSORY	CATALOGUE No	REV
S4	880LM /M 3000K 24V LED	LED STRIP LIGHT IN A SCREW FIXED EXTRUSION C/W OPAL DIFFUSER MOUNTED IN THE CENTRAL DISPLAY AS PER THE ARCHITECTURAL DETAIL. PROVIDE THE S4 STRIP WITH REMOTE DALI DIMMABLE POWER SUPPLIES AS REQUIRED LOCATE THE POWER SUPPLIES IN A CONCEALED ACCESSIBLE POSITION NOTED ON THE AS CONSTRUCTED DOCUMENTS.	NATURAL	MELEC ML-ALU-1407-2M - ML-VLCRI-14.4-WW	A
S5	880LM /M 3000K 24V LED	LED STRIP LIGHT IN A SCREW FIXED EXTRUSION C/W OPAL DIFFUSER MOUNTED IN THE CEILING PELMET AS PER THE ARCHITECTURAL DETAIL. PROVIDE THE S5 STRIP WITH REMOTE DALI DIMMABLE POWER SUPPLIES AS REQUIRED LOCATE THE POWER SUPPLIES IN A CONCEALED ACCESSIBLE POSITION NOTED ON THE AS CONSTRUCTED DOCUMENTS.	NATURAL	MELEC ML-ALU-1407-2M - ML-VLCRI-14.4-WW	A
S6	880LM /M 3000K 24V LED	LED STRIP LIGHT IN A SCREW FIXED EXTRUSION C/W OPAL DIFFUSER MOUNTED IN THE SUSPENDED BULKHEAD OVER THE BAR AS PER THE ARCHITECTURAL DETAIL. PROVIDE THE S6 STRIP WITH REMOTE DALI DIMMABLE POWER SUPPLIES AS REQUIRED LOCATE THE POWER SUPPLIES IN A CONCEALED ACCESSIBLE POSITION NOTED ON THE AS CONSTRUCTED DOCUMENTS.	NATURAL	MELEC ML-ALU-1407-2M - ML-VLCRI-14.4-WW	A
E1	LED	EMERGENCY LIGHT: RECESSED NON-MAINTAINED EMERGENCY LIGHT. AS2293 CLASSIFICATION C0-D63 - C90-D63.	WHITE	CLEVERTRONICS LLIFE	A
E2	LED	EMERGENCY LIGHT: RECESSED NON-MAINTAINED EMERGENCY LIGHT MOUNTED IN A CUSTOM MDF SQUARE BOX TO DROP THE FITTING LEVEL WITH THE UNDERSIDE OF THE ADJACENT CEILING BATTENS. ENSURE THERE ARE NO VISIBLE FIXINGS IN THE MOUNTING BOX. PROVIDE A SHOP DRAWING OF THE MOUNTING BOX. AS2293 CLASSIFICATION C0-D63 - C90-D63.	WHITE	CLEVERTRONICS LLIFE	A
EX	LED	EXIT LIGHT: MAINTAINED 24M VIEWING DISTANCE EXIT LIGHT C/W DIFFUSERS & DIRECTIONAL ARROWS AS SHOWN. CEILING RECESSED. AS2293 CLASSIFICATION C0-D1.25- C90-D2	WHITE	CLEVERTRONICS LUBPRO-SM	A
EMERGENCY PACK		LIGHT FITTINGS THAT ARE DESIGNATED AS BEING PROVIDED WITH AN EMERGENCY PACK ARE TO BE PROVIDED WITH AN INTEGRAL AS2293 EMERGENCY PACK. THE FITTINGS ARE TO BE NON MAINTAINED WITH ALL LAMPS SWITCHED AS PER THE LIGHTING CONTROL FOR THAT SPACE UNLESS NOTED OTHERWISE. REFER TO THE SPECIFICATION FOR FURTHER DETAILS OF THE CONFIGURATION AND SWITCHING OF EMERGENCY LIGHTS.			A



# ELECTRICAL DESIGN GROUP

ELECTRICAL BUILDING SERVICES CONSULTANTS

P.O. Box 15, SHERWOOD Q. 4075

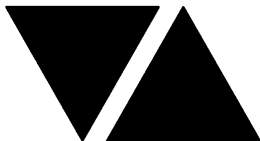
Phone: (07) 3278 4375 Fax: (07) 3716 0222

Web Site: [www.edg.net.au](http://www.edg.net.au) Email: [brisbane@edg.net.au](mailto:brisbane@edg.net.au)

**C3358a - BRACKEN RIDGE TAVERN**  
**ELECTRICAL EQUIPMENT SCHEDULE**  
**REVISION A - 28 FEBRUARY 2025**

**C3358a-0002(A).xls**

THE LIGHT FITTING SUPPLIER CONTACT DETAILS MAY BE AVAILABLE ON THE EDG WEBSITE VIA THE FOLLOWING LINK <a href="http://www.edg.net.au/Links/Lighting.htm">www.edg.net.au/Links/Lighting.htm</a>					
TYPE	LAMPS	DESCRIPTION	COLOUR / ACCESSORY	CATALOGUE No	REV
PROXIMITY DETECTOR SWITCH (PD)		ADJUSTABLE FLUSH RECESSED 360 DEGREE TRIPLE PYRO PIR PRESENCE DETECTOR TO OPERATE THE ASSOCIATED LIGHTS FOR A PRE-SET AMOUNT OF TIME. ADJUST THE TIME AND SENSITIVITY ON SITE AS DIRECTED BY THE ENGINEER.	WHITE	CLIPSAL. SELECTION BY THE CONTRACTOR. SUBMIT DETAILS OF THE PROXIMITY DETECTOR SWITCH FOR APPROVAL PRIOR TO ORDERING	A
FIRE INDICATOR PANEL (FIP)		REPLACE THE EXISTING FIP WITH A CURRENT VERSION OF THE AS1670.1 COMPLIANT WHITE FIRE INDICATOR PANEL.			A
SMOKE DETECTOR		AS1670.1 SURFACE MOUNTED SMOKE DETECTOR			A
RECESSED FIRE ALARM SPEAKER		AS1670.1 RECESSED FIRE ALARM SPEAKER C/W WHITE GRILL			A
THERMAL DETECTOR		SURFACE MOUNTED THERMAL DETECTOR TO AS1670.1.			A
FIRE ALARM SYSTEM INTERFACE		FIRE ALARM FAILSAFE INTERFACE TO UNLOCK THE DOOR UPON A FIRE ALARM			A
ONE-WAY LIGHT SWITCH		ONE-WAY LIGHT SWITCH C/W CIRCUIT IDENTIFICATION ON THE FACEPLATE BEHIND THE SURROUND MOUNTED AT 1000mm AFFL UNLESS NOTED OTHERWISE.	WHITE	CLIPSAL C2000 SERIES 30USM	A
TWO-WAY LIGHT SWITCH		TWO-WAY LIGHT SWITCH C/W CIRCUIT IDENTIFICATION ON THE FACEPLATE BEHIND THE SURROUND MOUNTED AT 1000mm AFFL UNLESS NOTED OTHERWISE.	WHITE	CLIPSAL C2000 SERIES 30USM	A
LIGHTING CONTROL SWITCH PANEL (SPx)		6-BUTTON PROGRAMMABLE SWITCH PANEL C/W CENTRAL LCD DISPLAY MOUNTED AT 1000mm AFFL UNLESS NOTED OTHERWISE.	ALUMINIUM	DYNALITE ANTUMBRA DISPLAY	A
SINGLE POWER OUTLET		SINGLE POWER OUTLET C/W CIRCUIT IDENTIFICATION ON THE FACEPLATE BEHIND THE SURROUND MOUNT AT 300mm AFFL U.N.O. RATING 10A U.N.O.	WHITE UNLESS NOTED AS BLACK (BK)	CLIPSAL C2000 SERIES	A
DOUBLE POWER OUTLET		DOUBLE POWER OUTLET C/W CIRCUIT IDENTIFICATION ON THE FACEPLATE BEHIND THE SURROUND MOUNT AT 300mm AFFL U.N.O. RATING 10A U.N.O.	WHITE UNLESS NOTED AS BLACK (BK)	CLIPSAL C2000 SERIES	A
SINGLE POWER OUTLET FOR THE AUTO DOOR (AD)		SINGLE 10 AMP POWER OUTLET C/W CIRCUIT IDENTIFICATION ON THE FACEPLATE BEHIND THE SURROUND MOUNTED WITHIN THE AUTO DOOR MULLION	WHITE	CLIPSAL C2000 SERIES	A
IP56 SINGLE POWER OUTLET		SINGLE POWER OUTLET IP56 MOUNT AT 300mm AFFL U.N.O. RATING 10A U.N.O.	GREY	CLIPSAL 56 SERIES	A



# ELECTRICAL DESIGN GROUP

ELECTRICAL BUILDING SERVICES CONSULTANTS

P.O. Box 15, SHERWOOD Q. 4075

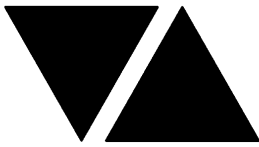
Phone: (07) 3278 4375 Fax: (07) 3716 0222

Web Site: [www.edg.net.au](http://www.edg.net.au) Email: [brisbane@edg.net.au](mailto:brisbane@edg.net.au)

**C3358a - BRACKEN RIDGE TAVERN**  
**ELECTRICAL EQUIPMENT SCHEDULE**  
**REVISION A - 28 FEBRUARY 2025**

**C3358a-0002(A).xls**

THE LIGHT FITTING SUPPLIER CONTACT DETAILS MAY BE AVAILABLE ON THE EDG WEBSITE VIA THE FOLLOWING LINK <a href="http://www.edg.net.au/Links/Lighting.htm">www.edg.net.au/Links/Lighting.htm</a>					
TYPE	LAMPS	DESCRIPTION	COLOUR / ACCESSORY	CATALOGUE No	REV
DOUBLE POWER OUTLET (USB)		DOUBLE POWER OUTLET C/W USB CHARGER AND CIRCUIT IDENTIFICATION ON THE FACEPLATE BEHIND THE SURROUND MOUNT AT 300mm AFFL U.N.O. RATING 10A U.N.O.	WHITE UNLESS NOTED AS BLACK (BK)	CLIPSAL 2000 SERIES + 30USBCM MECH	A
WEATHERPROOF POWER OUTLET (WP)		IP54 WEATHERPROOF SINGLE / DOUBLE POWER OUTLET AS NOTED ON DRAWING C/W COVER FLAP OVER SOCKET. MOUNT AT MINIMUM 1100mm AFFL U.N.O. RATING 10A U.N.O.	-	CLIPSAL WSCF227F	A
20A WEATHERPROOF POWER OUTLET (WP 20A)		IP66 WEATHERPROOF 20A SINGLE POWER OUTLET. MOUNT AT MINIMUM 1100mm AFFL U.N.O. RATING 20A U.N.O.	-	CLIPSAL WSF226/20	A
SPECIAL PURPOSE OUTLET		SPECIAL PURPOSE OUTLET TYPE AS NOTED. MOUNT AT 1350mm AFFL U.N.O. RATING 20A U.N.O. CONNECT TO EQUIPMENT VIA FLEXIBLE CONDUIT.			A
SINGLE-PHASE ISOLATOR		SINGLE-PHASE WEATHERPROOF ISOLATOR. MOUNT AT 1350mm AFFL U.N.O. RATING 20A U.N.O. CONNECT TO EQUIPMENT VIA FLEXIBLE CONDUIT.	-	CLIPSAL WHT20	A
THREE-PHASE ISOLATOR		THREE-PHASE WEATHERPROOF ISOLATOR. MOUNT AT 1350mm AFFL U.N.O. RATING 20A U.N.O. CONNECT TO EQUIPMENT VIA FLEXIBLE CONDUIT.	-	CLIPSAL WHT35	A
DB-A		EXISTING DISTRIBUTION BOARD DB-A REMOVE ALL SWITCHGEAR MADE REDUNDANT BY THE WORKS AND UPDATE THE CIRCUIT SCHEDULE AT PRACTICAL COMPLETION.			A
DB-B		NEW DISTRIBUTION BOARD DB-B AS PER THE DB-B SCHEDULE AND THE NOTES. PROVIDE A SHOP DRAWING OF DB-B FOR APPROVAL.			A
DB-C		EXISTING DISTRIBUTION BOARD DB-C REMOVE ALL SWITCHGEAR MADE REDUNDANT BY THE WORKS AND UPDATE THE CIRCUIT SCHEDULE AT PRACTICAL COMPLETION.			A
DB-G		EXISTING DISTRIBUTION BOARD DB-G TO BE UPGRADED AS NECESSARY TO ACCOMMODATE THE NEW CIRCUITS. IT IS ACCEPTABLE TO UTILISE THE EXISTING SWITCHGEAR IF IT IS IN APPROPRIATE CONDITION, HAS THE REQUIRED RATING AND CONTROL FUNCTIONS. REMOVE ALL SWITCHGEAR MADE REDUNDANT BY THE WORKS AND UPDATE THE CIRCUIT SCHEDULE AT PRACTICAL COMPLETION.			A
DB-F		NEW DISTRIBUTION BOARD DB-F AS PER THE DB-F SCHEDULE AND THE NOTES. PROVIDE A SHOP DRAWING OF DB-F FOR APPROVAL.			A
DB-J		EXISTING DISTRIBUTION BOARD DB-J REMOVE ALL SWITCHGEAR MADE REDUNDANT BY THE WORKS AND UPDATE THE CIRCUIT SCHEDULE AT PRACTICAL COMPLETION.			A
DB-1		EXISTING DISTRIBUTION BOARD DB-1 TO BE UPGRADED AS NECESSARY TO ACCOMMODATE THE NEW CIRCUITS. IT IS ACCEPTABLE TO UTILISE THE EXISTING SWITCHGEAR IF IT IS IN APPROPRIATE CONDITION, HAS THE REQUIRED RATING AND CONTROL FUNCTIONS. REMOVE ALL SWITCHGEAR MADE REDUNDANT BY THE WORKS AND UPDATE THE CIRCUIT SCHEDULE AT PRACTICAL COMPLETION.			A



# ELECTRICAL DESIGN GROUP

ELECTRICAL BUILDING SERVICES CONSULTANTS

P.O. Box 15, SHERWOOD Q. 4075

Phone: (07) 3278 4375 Fax: (07) 3716 0222

Web Site: [www.edg.net.au](http://www.edg.net.au) Email: [brisbane@edg.net.au](mailto:brisbane@edg.net.au)

**C3358a - BRACKEN RIDGE TAVERN**  
**ELECTRICAL EQUIPMENT SCHEDULE**  
**REVISION A - 28 FEBRUARY 2025**

**C3358a-0002(A).xls**

THE LIGHT FITTING SUPPLIER CONTACT DETAILS MAY BE AVAILABLE ON THE EDG WEBSITE VIA THE FOLLOWING LINK <a href="http://www.edg.net.au/Links/Lighting.htm">www.edg.net.au/Links/Lighting.htm</a>					
TYPE	LAMPS	DESCRIPTION	COLOUR / ACCESSORY	CATALOGUE No	REV
MSB		MAIN SWITCHBOARD TO BE PROVIDED WITH NEW MCCBS TO SUPPLY DB-B AND DB-F			A
MSSB-X		EXISTING MECHANICAL SERVICES SWITCHBOARD.			A
COMMUNICATIONS RACK (CR-A)		EXISTING COMMUNICATIONS RACK TO BE UPGRADED AS NECESSARY. UPDATE THE PORT LABELS AT PRACTICAL COMPLETION			A
SECURITY EQUIPMENT		EXISTING SECURITY PANEL			A
COMMUNICATIONS OUTLET		RJ45 CAT-6 COMMUNICATIONS OUTLET, CABLED BACK TO CAT 6 PATCH PANELS IN THE COMMUNICATIONS RACK CR VIA 4-PAIR CAT-6 UTP CABLE. MOUNT UP TO 3 RJ45 OUTLETS PER MULTI-GANG FACEPLATE WITH SEPARATE PERMANENT LABELLING FOR EACH OUTLET. MOUNT AT 300 AFFL UNLESS NOTED OTHERWISE	WHITE UNLESS NOTED AS BLACK (BK)	CLIPSAL "C2000 SERIES"	A
CAT 6 GAMING OUTLET		RJ45 CAT-6 COMMUNICATIONS OUTLET, CABLED BACK TO CAT 6 DEDICATED GAMING PATCH PANELS IN THE GAMING RACK VIA 4-PAIR CAT-6 UTP CABLE. MOUNT UP TO 3 RJ45 OUTLETS PER MULTI-GANG FACEPLATE WITH SEPARATE PERMANENT LABELLING FOR EACH OUTLET. MOUNT AT 300 AFFL UNLESS NOTED OTHERWISE	WHITE UNLESS NOTED AS BLACK (BK)	CLIPSAL "2000 SERIES" KRONE JACK C/W SHUTTER	A
GAMING FIBRE (GF)		INSTALL DUPLEX FIBRE OPTIC CABLE BETWEEN THE POKER MACHINE BASES AND FROM THE POKER MACHINE BASES BACK TO THE GAMING RACK AS INDICATED. THE DUPLEX FIBRE OPTIC CABLE WILL BE SUPPLIED AND TERMINATED BY OTHERS.			A





# ELECTRICAL DESIGN GROUP

ELECTRICAL BUILDING SERVICES CONSULTANTS

P.O. Box 15, SHERWOOD Q. 4075

Phone: (07) 3278 4375

Website: www.edg.net.au Email: brisbane@edg.net.au

C3358a - BRACKEN RIDGE TAVERN

C3358a-0005(A).xls

DISTRIBUTION BOARD DB-1

REVISION A - 28 FEBRUARY 2025

UPGRADE THE EXISTING DISTRIBUTION BOARD AS REQUIRED TO ACCOMMODATE THE FOLLOWING CIRCUITS. REMOVE ALL EXISTING SWITCHGEAR MADE REDUNDANT BY THE WORKS. UPDATE THE SWITCHBOARD LABELS AND SCHEDULE AT PRACTICAL COMPLETION							A
CIRC	PH	CIRCUIT BREAKER (amps)	CONTROL EQUIPMENT	CABLE SIZE ( mm <sup>2</sup> )	LOCATION	CIRCUIT USE	
P1	1	20	RCBO	2.5			A
P2	1	20	RCBO	2.5			A
P3	1	20	RCBO	2.5			A
P4	1	20	RCBO	2.5			A
P5	1	20	RCBO	2.5			A
P6	1	20	RCBO	2.5			A
P7	1	20	RCBO	2.5			A
P8	1	20	RCBO	2.5			A
P9	1	20	RCBO	2.5			A
P10	1	20	RCBO	2.5			A
P11	1	20	RCBO	2.5			A
P12	1	20	RCBO	2.5			A
P13	1	20	RCBO	2.5			A
P14	1	20	RCBO	2.5			A
P15	1	20	RCBO	2.5			A
P16	1	20	RCBO	2.5			A
P17	1	20	RCBO	2.5			A
L1	1	20	RCBO	2.5		LIGHTS	A
L2	1	20	RCBO	2.5		LIGHTS	A
L3	1	20	RCBO	2.5		LIGHTS	A
L4	1	20	RCBO	2.5		LIGHTS	A
L5	1	20	RCBO	2.5		LIGHTS	A
L6	1	20	RCBO	2.5		LIGHTS	A
L7	1	20	RCBO	2.5		LIGHTS	A
L8	1	20	RCBO	2.5		LIGHTS	A
L9	1	20	RCBO	2.5		LIGHTS	A
L10	1	20	RCBO	2.5		LIGHTS	A



# ELECTRICAL DESIGN GROUP

ELECTRICAL BUILDING SERVICES CONSULTANTS

P.O. Box 15, SHERWOOD Q. 4075

Phone: (07) 3278 4375

Website: www.edg.net.au Email: brisbane@edg.net.au

C3358a - BRACKEN RIDGE TAVERN

C3358a-0006(A).xls

DISTRIBUTION BOARD DB-B (GROUND SOUTH)

REVISION A - 28 FEBRUARY 2025

FAULT CURRENT: 6KA USING CASCADING							REV
MAIN SWITCH: 250A NON AUTO LOAD BREAK							A
CHASSIS SIZE: 2 X 60 POLES							A
SUPPLIED FROM: MSB							A
CHASSIS RATING: 250A							A
SUPPLY CABLE: 4C70							A
PHASES: 3							A
PROVIDE THE DB WITH A FULL WIDTH EMPTY DIN RAIL TO ACCOMMODATE FUTURE CONTACTORS AND CONTROLS IN ADDITION TO THE INITIAL PHILIPS DYNALITE CONTROLS .							A
CIRC	PH	CIRCUIT BREAKER (amps)	CONTROL EQUIPMENT	CABLE SIZE ( mm <sup>2</sup> )	LOCATION	CIRCUIT USE	
P1	1	20	RCBO	2.5			A
P2	1	20	RCBO	2.5			A
P3	1	20	RCBO	2.5			A
P4	1	20	RCBO	2.5			A
P5	1	20	RCBO	2.5			A
P6	1	20	RCBO	2.5			A
P7	1	20	RCBO	2.5			A
P8	1	20	RCBO	2.5			A
P9	1	20	RCBO	2.5			A
P10	1	20	RCBO	2.5			A
P11	1	20	RCBO	2.5			A
P12	1	20	RCBO	2.5			A
P13	1	20	RCBO	2.5			A
P14	1	20	RCBO	2.5			A
P15	1	20	RCBO	2.5			A
P16	1	20	RCBO	2.5			A
P17	1	20	RCBO	2.5			A
P18	1	20	RCBO	2.5			A
P19	1	20	RCBO	2.5			A
P20	1	20	RCBO	2.5			A
P21	1	20	RCBO	2.5			A
P22	1	20	RCBO	2.5			A
P23	1	20	RCBO	2.5			A
P24	1	20	RCBO	2.5			A
P25	1	20	RCBO	2.5			A
P26	1	20	RCBO	2.5			A
P27	1	20	RCBO	2.5			A
L1	1	20	RCBO	2.5		LIGHTS	A
L2	1	20	RCBO	2.5		LIGHTS	A
L3	1	20	RCBO	2.5		LIGHTS	A
L4	1	20	RCBO	2.5		LIGHTS	A
L5	1	20	RCBO	2.5		LIGHTS	A
L6	1	20	RCBO	2.5		LIGHTS	A
L7	1	20	RCBO	2.5		LIGHTS	A
L8	1	20	RCBO	2.5		LIGHTS	A
L9	1	20	RCBO	2.5		LIGHTS	A
L10	1	20	RCBO	2.5		LIGHTS	A
L11	1	20	RCBO	2.5		LIGHTS	A
L12	1	20	RCBO	2.5		LIGHTS	A
L13	1	20	RCBO	2.5		LIGHTS	A
L14	1	20	RCBO	2.5		LIGHTS	A



# ELECTRICAL DESIGN GROUP

ELECTRICAL BUILDING SERVICES CONSULTANTS

P.O. Box 15, SHERWOOD Q. 4075

Phone: (07) 3278 4375

Website: www.edg.net.au Email: brisbane@edg.net.au

C3358a - BRACKEN RIDGE TAVERN

C3358a-0007(A).xls

DISTRIBUTION BOARD DB-C

REVISION A - 28 FEBRUARY 2025

UPGRADE THE EXISTING DISTRIBUTION BOARD AS REQUIRED TO ACCOMMODATE THE FOLLOWING CIRCUITS. REMOVE ALL EXISTING SWITCHGEAR MADE REDUNDANT BY THE WORKS. UPDATE THE SWITCHBOARD LABELS AND SCHEDULE AT PRACTICAL COMPLETION							A
CIRC	PH	CIRCUIT BREAKER (amps)	CONTROL EQUIPMENT	CABLE SIZE ( mm <sup>2</sup> )	LOCATION	CIRCUIT USE	
P1	1	20	RCBO	2.5			A
P2	1	20	RCBO	2.5			A
P3	1	20	RCBO	2.5			A
P4	1	20	RCBO	2.5			A
P5	1	20	RCBO	2.5			A
P6	1	20	RCBO	2.5			A
P7	1	20	RCBO	2.5			A
P8	1	20	RCBO	2.5			A
P9	1	20	RCBO	2.5			A
P10	1	20	RCBO	2.5			A
P11	1	20	RCBO	2.5			A
P12	1	20	RCBO	2.5			A
P13	1	20	RCBO	2.5			A
P14	1	20	RCBO	2.5			A
P15	1	20	RCBO	2.5			A
P16	1	20	RCBO	2.5			A
P17	1	20	RCBO	2.5			A
L1	1	20	RCBO	2.5		LIGHTS	A
L2	1	20	RCBO	2.5		LIGHTS	A
L3	1	20	RCBO	2.5		LIGHTS	A
L4	1	20	RCBO	2.5		LIGHTS	A
L5	1	20	RCBO	2.5		LIGHTS	A
L6	1	20	RCBO	2.5		LIGHTS	A
L7	1	20	RCBO	2.5		LIGHTS	A
L8	1	20	RCBO	2.5		LIGHTS	A
L9	1	20	RCBO	2.5		LIGHTS	A
L10	1	20	RCBO	2.5		LIGHTS	A



# ELECTRICAL DESIGN GROUP

ELECTRICAL BUILDING SERVICES CONSULTANTS

P.O. Box 15, SHERWOOD Q. 4075

Phone: (07) 3278 4375

Website: www.edg.net.au Email: brisbane@edg.net.au

C3358a - BRACKEN RIDGE TAVERN

C3358a-0008(A).xls

DISTRIBUTION BOARD DB-F

REVISION A - 28 FEBRUARY 2025

FAULT CURRENT: 6KA USING CASCADING							REV
MAIN SWITCH: 250A NON AUTO LOAD BREAK							A
CHASSIS SIZE: 2 X 60 POLES							A
SUPPLIED FROM: MSB							A
CHASSIS RATING: 250A							A
SUPPLY CABLE: 4C70							A
PHASES: 3							A
PROVIDE THE DB WITH A FULL WIDTH EMPTY DIN RAIL TO ACCOMMODATE FUTURE CONTACTORS AND CONTROLS IN ADDITION TO THE INITIAL PHILIPS DYNALITE CONTROLS .							A
CIRC	PH	CIRCUIT BREAKER (amps)	CONTROL EQUIPMENT	CABLE SIZE ( mm <sup>2</sup> )	LOCATION	CIRCUIT USE	
P1	1	20	RCBO	2.5			A
P2	1	20	RCBO	2.5			A
P3	1	20	RCBO	2.5			A
P4	1	20	RCBO	2.5			A
P5	1	20	RCBO	2.5			A
P6	1	20	RCBO	2.5			A
P7	1	20	RCBO	2.5			A
P8	1	20	RCBO	2.5			A
P9	1	20	RCBO	2.5			A
P10	1	20	RCBO	2.5			A
P11	1	20	RCBO	2.5			A
P12	1	20	RCBO	2.5			A
P13	3	40	MCB	6.0			A
P14	1	20	RCBO	2.5			A
P15	1	20	RCBO	2.5			A
P16	1	20	RCBO	2.5			A
P17	1	20	RCBO	2.5			A
P18	3	20	RCBO	2.5			A
P19	3	40	MCB	6.0			A
P20	3	40	MCB	6.0			A
P21	1	20	RCBO	2.5			A
P22	1	20	RCBO	2.5			A
P23	1	20	RCBO	2.5			A
P24	1	20	RCBO	2.5			A
P25	1	20	RCBO	2.5			A
P26	1	20	RCBO	2.5			A
P27	1	20	RCBO	2.5			A



# ELECTRICAL DESIGN GROUP

ELECTRICAL BUILDING SERVICES CONSULTANTS

P.O. Box 15, SHERWOOD Q. 4075

Phone: (07) 3278 4375

Website: www.edg.net.au Email: brisbane@edg.net.au

C3358a - BRACKEN RIDGE TAVERN

C3358a-0008(A).xls

DISTRIBUTION BOARD DB-F

REVISION A - 28 FEBRUARY 2025

FAULT CURRENT: 6KA USING CASCADING							REV
MAIN SWITCH: 250A NON AUTO LOAD BREAK							A
CHASSIS SIZE: 2 X 60 POLES							A
SUPPLIED FROM: MSB							A
CHASSIS RATING: 250A							A
SUPPLY CABLE: 4C70							A
PHASES: 3							A
PROVIDE THE DB WITH A FULL WIDTH EMPTY DIN RAIL TO ACCOMMODATE FUTURE CONTACTORS AND CONTROLS IN ADDITION TO THE INITIAL PHILIPS DYNALITE CONTROLS .							A
CIRC	PH	CIRCUIT BREAKER (amps)	CONTROL EQUIPMENT	CABLE SIZE ( mm <sup>2</sup> )	LOCATION	CIRCUIT USE	
L1	1	20	RCBO	2.5		LIGHTS	A
L2	1	20	RCBO	2.5		LIGHTS	A
L3	1	20	RCBO	2.5		LIGHTS	A
L4	1	20	RCBO	2.5		LIGHTS	A
L5	1	20	RCBO	2.5		LIGHTS	A
L6	1	20	RCBO	2.5		LIGHTS	A
L7	1	20	RCBO	2.5		LIGHTS	A
L8	1	20	RCBO	2.5		LIGHTS	A
L9	1	20	RCBO	2.5		LIGHTS	A
L10	1	20	RCBO	2.5		LIGHTS	A
L11	1	20	RCBO	2.5		LIGHTS	A
L12	1	20	RCBO	2.5		LIGHTS	A
L13	1	20	RCBO	2.5		LIGHTS	A
L14	1	20	RCBO	2.5		LIGHTS	A



# ELECTRICAL DESIGN GROUP

ELECTRICAL BUILDING SERVICES CONSULTANTS

P.O. Box 15, SHERWOOD Q. 4075

Phone: (07) 3278 4375

Website: [www.edg.net.au](http://www.edg.net.au) Email: [brisbane@edg.net.au](mailto:brisbane@edg.net.au)

C3358a - BRACKEN RIDGE TAVERN

C3358a-0009(A).xls

DISTRIBUTION BOARD DB-G

REVISION A - 28 FEBRUARY 2025

							REV
UPGRADE THE EXISTING DISTRIBUTION BOARD AS REQUIRED TO ACCOMMODATE THE FOLLOWING CIRCUITS. REMOVE ALL EXISTING SWITCHGEAR MADE REDUNDANT BY THE WORKS. UPDATE THE SWITCHBOARD LABELS AND SCHEDULE AT PRACTICAL COMPLETION							A
CIRC	PH	CIRCUIT BREAKER (amps)	CONTROL EQUIPMENT	CABLE SIZE ( mm <sup>2</sup> )	LOCATION	CIRCUIT USE	
P1	1	20	RCBO	2.5	GAMING	GAMING	A
P2	1	20	RCBO	2.5	GAMING	GAMING	A
P3	1	20	RCBO	2.5	GAMING	GAMING	A
P4	1	20	RCBO	2.5	GAMING	GAMING	A
P5	1	20	RCBO	2.5	GAMING	GAMING	A
P6	1	20	RCBO	2.5	GAMING	GAMING	A
P7	1	20	RCBO	2.5	GAMING	GAMING	A
P8	1	20	RCBO	2.5	GAMING	GAMING	A
P9	1	20	RCBO	2.5	GAMING	GAMING	A
P10	1	20	RCBO	2.5	GAMING	GAMING	A
P11	1	20	RCBO	2.5	GAMING	GAMING	A
P12	1	20	RCBO	2.5	GAMING	GAMING	A
P13	1	20	RCBO	2.5	GAMING	GAMING	A
P14	1	20	RCBO	2.5	GAMING	GAMING	A
P15	1	20	RCBO	2.5	GAMING	GAMING	A
P16	1	20	RCBO	2.5	GAMING	GAMING	A
P17	1	20	RCBO	2.5	GAMING	GAMING	A
P18	3	20	RCBO	2.5	GAMING	GAMING	A

LEGEND

	ELECTRICAL SERVICES SWITCHBOARD.
	SWITCHBOARD / CONTROL PANEL NOT PROVIDED AS PART OF THE ELECTRICAL SUBCONTRACT.
	SINGLE POWER OUTLET.
	DOUBLE POWER OUTLET.
	DOUBLE POWER OUTLET C/W USB CHARGER.
	SPECIAL PURPOSE POWER OUTLET.
	SINGLE PHASE ISOLATOR.
	THREE PHASE ISOLATOR.
	ELECTRICAL JUNCTION BOX / RISER AS NOTED.
	ELECTRICAL CABLE TRAY / LADDER AS NOTED.
	LIGHTING PRESENCE DETECTOR SWITCH.
	LIGHTING CONTROL SWITCH PANEL, TYPE AS NOTED.
	ONE-WAY LIGHT SWITCH.
	TWO-WAY LIGHT SWITCH.
	CIRCUIT LINE.
	SWITCH LINE.
	POWER CIRCUIT DESIGNATION. DENOTES DB AND CIRCUIT.
	LIGHTING CONTROL CHANNEL REFERENCE.
	ELECTRICAL EQUIPMENT AS NOTED.
	RJ45 COMMUNICATIONS OUTLET.
	RJ45 GAMING LINK OUTLET.
	GAMING FIBRE.
	FIRE INDICATOR PANEL.
	FIRE ALARM SYSTEM DOOR INTERFACE.
	FIRE ALARM SMOKE DETECTOR.
	FIRE ALARM THERMAL DETECTOR.
	RECESSED FIRE ALARM SPEAKER.
	FUSE.
	SINGLE PHASE.
	THREE PHASE.
	CURRENT TRANSFORMER C/W REMOVABLE LINK.
	FUSE LINK.
	COMBINED FUSE SWITCH.
	CIRCUIT BREAKER.
	ISOLATOR.
	RESIDUAL CURRENT DEVICE.
	CONTACTOR – NORMALLY OPEN.
	CONTACTOR – NORMALLY CLOSED.

LEGEND

	REFER TO DETAIL NOTED FOR THE AREA SHOWN HATCHED. ADDITIONAL OUTLETS & FITTINGS MAY BE SHOWN ON DETAIL.
	E1: GENERAL LED EMERGENCY LIGHT, RECESSED, WHITE.
	E2: GENERAL LED EMERGENCY LIGHT, MOUNTED IN A CUSTOM MDF BOX, WHITE.
	EX: WHITE EMERGENCY LED EXIT LIGHT, FRONT OF HOUSE.
	Lx: LIGHT FITTING C/W NON-MAINTAINED EMERGENCY BATTERY PACK. TYPE AS NOTED.
	L1: RECESSED 300 x 600 FLAT PANEL TROFFER, WHITE.
	L2: CEILING MOUNTED MOVING HEAD COLOUR WHEEL, BLACK.
	L3: 1200 LONG SURFACE IP65 BATTEN, LIGHT GREY.
	L4: EXISTING CARPARK POLE LIGHT TO BE MODIFIED.
	L5: NEW CARPARK POLE UTILISING A MODIFIED L4 FITTING.
	L6: NEW TWIN CARPARK POLE LIGHT TO MATCH EXISTING ADJACENT TWIN POLE LIGHT.
	RDL1: RECESSED DOWNLIGHT, WHITE.
	RDL2: RECESSED DOWNLIGHT, WHITE.
	RDL3: RECESSED DOWNLIGHT, WHITE.
	RDL4: RECESSED DOWNLIGHT, BLACK.
	SDL1: SURFACE MOUNTED CYLINDER SHADE C/W BUBBLE GLASS.
	SDL2: SURFACE MOUNTED CAN DOWNLIGHT, WHITE.
	SDL3: SURFACE MOUNTED SPOT LIGHT.
	SDL4: SURFACE MOUNTED 800DIA BALL LIGHT.
	SDL5: SURFACE MOUNTED SPOT LIGHT.
	SDL6: SURFACE MOUNTED ADJUSTABLE SPOT LIGHT, WHITE.
	SDL7: SURFACE MOUNTED CAN DOWNLIGHT, BLACK.
	WL1: WALL LIGHT, WHITE.
	WL2: WALL LIGHT, BRASS.
	WL3: WALL LIGHT, BRASS.
	PL1: DECORATIVE SUSPENDED PENDANT.
	CAT: CATENARY FESTOON LIGHTS WITH STAINLESS STEEL SUPPORT SYSTEM.
	UP1: GARDEN STAKE UPLIGHT FITTING, BLACK.
	H1: LINEAR HEAT LAMP.
	H2: LINEAR HEAT LAMP.
	H3: HANGING HEAT LAMP.
	HE/W: CEILING BULKHEAD MOUNTED LINEAR HEATER.
	CF1: 2180 DIA CEILING FAN, WHITE.
	TL1: TABLE LAMP.
	Sx: LED STRIP LIGHT, TYPE AS NOTED.

NOTE

ALL ELECTRICAL PENETRATIONS THROUGH THE ROOF SHEETING ARE TO BE IN LINE WITH THE STRUCTURAL OR MECHANICAL SERVICES PENETRATIONS TO AVOID DEDICATED FLASHINGS FOR THE ELECTRICAL SERVICES.



NOTES

1. EXTENT OF WORKS

THE ELECTRICAL SERVICES SUB-CONTRACT INCLUDES BUT IS NOT LIMITED TO THE FOLLOWING:

- SUPPLY AND INSTALLATION OF ALL COMPONENTS FORMING PART OF THE ELECTRICAL SERVICES.
- INSPECTIONS.
- TESTING AND COMMISSIONING.
- MAINTENANCE.
- CABLING, CABLE SUPPORT SYSTEMS AND ACCESS.
- POWER DISTRIBUTION.
- LIGHTING.
- COMMUNICATIONS.
- FIRE ALARM SYSTEM.
- AS CONSTRUCTED DOCUMENTS AND MAINTENANCE MANUAL.
- OPERATOR TRAINING.
- ALL MINOR COMPONENTS AND INCIDENTAL WORKS NOT SPECIFICALLY REFERRED TO, HOWEVER NECESSARY TO COMPLETE THE ELECTRICAL SERVICES INSTALLATION SUCH THAT IT IS HANDED OVER COMPLETE, OPERATIONAL AND FIT FOR THE INTENDED USE.

ACCEPT FULL RESPONSIBILITY FOR LIASING, ARRANGING AND CO-ORDINATION OF ALL WORKS THAT HAVE AN EFFECT ON OR WILL BE AFFECTED BY THE ELECTRICAL SERVICES.

REFER TO THE EQUIPMENT SCHEDULE FOR ADDITIONAL REQUIREMENTS.

ON THE DAY THE FACILITY OPENS FOR TRADING THE ELECTRICAL SUB CONTRACTOR MUST PROVIDE AN ELECTRICIAN ON SITE FOR THE INITIAL 12 HOURS OF TRADING.

ALL WORKS ARE TO BE STAGED TO ALLOW THE TAVERN TO CONTINUE TO OPERATE WITH ANY INTERRUPTION TO ANY ELECTRICAL SERVICE BEING CONTAINED OUTSIDE OF THE TAVERNS OPERATING HOURS WITH THE TAVERN BEING ADVISED OF THE INTERRUPTION IN WRITING TWO WEEKS PRIOR.

ALL EXISTING REDUNDANT CABLING AND ELECTRICAL SERVICES ARE TO BE REMOVED AS WELL AS ANY EXISTING CABLING OR ELECTRICAL SERVICES MADE REDUNDANT BY THE WORKS ARE TO BE REMOVED.

2. WORKMANSHIP

ENSURE THAT THE ELECTRICAL WORK IS PERFORMED BY THE HOLDER OF A CURRENT ELECTRICAL SUB CONTRACTOR LICENSE AND THE SERVICES COVERED BY THE ACMA IS PERFORMED BY THE HOLDER OF THE APPROPRIATE CURRENT ACMA LICENSE. ENSURE THE INSTALLATION AND ALL COMPONENTS, FIXTURES, FITTINGS, OUTLETS AND CABLES ARE SUPPLIED AND INSTALLED TO A HIGH STANDARD THROUGHOUT, AND INSTALLED IN A NEAT AND TRADESMAN LIKE MANNER, TO THE CURRENT INDUSTRY STANDARDS. ENSURE ALL MATERIALS AND COMPONENTS OF A SIMILAR TYPE ARE OF THE SAME MANUFACTURER AND INSTALLED IN A UNIFORM MANNER.

IT IS THE ELECTRICAL SUB CONTRACTOR’S RESPONSIBILITY TO ENSURE THAT THE INSTALLATION IS FIT FOR PURPOSE AND IS PROVIDED AS A COMPLETE WORKING INSTALLATION. IT IS THE ELECTRICAL SUB CONTRACTOR’S RESPONSIBILITY TO PROVIDE ALL COMPONENTS, FITTINGS, FIXTURES, SYSTEMS, PROGRAMMING ETC IRRESPECTIVE OF THE LEVEL DETAILED IN THE DOCUMENTS SUCH THAT THE INSTALLATION IS PROVIDED AS A COMPLETE WORKING INSTALLATION.

CONCEAL ALL WIRING AND CONDUITS. EXPOSED CABLING OR CONDUITS ARE GENERALLY NOT ACCEPTABLE. IT IS NOTED THAT CHASING AND REINSTATEMENT WILL BE REQUIRED. ENSURE ALL COMPONENTS, EQUIPMENT AND MATERIALS SUPPLIED ARE NEW, UNUSED, DESIGNED AND SELECTED TO ENSURE SATISFACTORY OPERATION UNDER VARYING ATMOSPHERIC, CLIMATIC, HUMID TROPICAL CONDITIONS WITHOUT DISTORTION AND DETERIORATION IN ANY PART AFFECTING EFFICIENCY AND RELIABILITY OF THE SYSTEMS. DESIGN AND SELECT ALL EQUIPMENT TO PROVIDE THE NECESSARY SAFETY TO HUMAN LIFE AND PROPERTY DURING OPERATION AND MAINTENANCE WITH PARTICULAR ATTENTION GIVEN TO ELECTRICAL SAFETY AND SEGREGATION PRECAUTIONS.

CHECK THE FINISHED PAINTWORK AROUND THE AREA OF EACH INSTALLATION AND TOUCH UP ALL DAMAGED PARTS AND FINISHES AFTER THE INSTALLATION OF THE ELECTRICAL SERVICES.

ALL WORKS ARE TO BE CARRIED OUT IN ACCORDANCE WITH THE BUILDER’S PROGRAM. ENSURE ALL FINAL LOCATIONS OF OUTLETS AND FITTINGS ARE CO-ORDINATED ONSITE WITH THE ARCHITECT AND ALL OTHER SERVICES, TO THE APPROVAL OF THE PROJECT MANAGER. ALLOW TO CO-ORDINATE THE FINAL LOCATION OF ALL EQUIPMENT, FITTINGS, & OUTLETS, SUCH THAT THEY ARE INSTALLED IN ACCORDANCE WITH THE AS3000 RESTRICTED ZONES, AND ARE NOT COVERED INAPPROPRIATELY.

ENSURE THAT ALL METAL SURFACES ARE SUITABLY PROTECTED AGAINST CORROSION, AND THAT ALL PLASTIC MATERIALS ARE UV STABILISED.

PROVIDE ALL MATERIALS AS NEW, AND OF THE HIGHEST CLASS AVAILABLE FOR THEIR RESPECTIVE TYPES. ENSURE ALL ASPECTS OF THE WORK ARE OF A HIGH STANDARD THROUGHOUT, AND INSTALLED IN A NEAT AND TRADESMAN LIKE MANNER, TO THE CURRENT INDUSTRY STANDARDS. CABLES MUST NOT BE JOINED. POWER EXTENSION BOARDS MUST NOT BE USED.

3. STANDARDS

IRRESPECTIVE OF INFORMATION CONTAINED IN THE ELECTRICAL SERVICES DOCUMENTS OR IN INSTRUCTIONS, IT IS THE ELECTRICAL SUB CONTRACTOR’S RESPONSIBILITY TO ENSURE ALL ELECTRICAL SERVICES WORKS ARE INSTALLED IN ACCORDANCE WITH THE REQUIREMENTS OF THE FOLLOWING. REFER ANY DISCREPANCIES BETWEEN THE REQUIREMENTS OF THE FOLLOWING AND/OR THE ELECTRICAL SERVICES DOCUMENTS AND INSTRUCTIONS TO THE ARCHITECT FOR CLARIFICATION PRIOR TO THE PLACING OF ORDERS, FABRICATION OR INSTALLATION OF THE ITEMS/METHODS IN DISCREPANCY.

- NCC BUILDING CODE OF AUSTRALIA.
- ELECTRICITY ACT.
- ELECTRICAL SAFETY ACT.
- ENERGEX REQUIREMENTS.
- THE QUEENSLAND ELECTRICITY CONNECTION MANUAL V4 (OECM) AND THE NATIONAL ELECTRICITY METERING STANDARDS (NEM).
- AS/NZS3000.
- AS3008.
- LOCAL BRIGADE.
- WORKPLACE HEALTH AND SAFETY ACT.
- TELECOMMUNICATIONS ACT.
- ACMA REQUIREMENTS.

NOTES

4. AUTHORITIES

ENSURE ALL OF THE ELECTRICAL SERVICES COMPLY WITH THE REQUIREMENTS OF ALL REGULATORY AUTHORITIES HAVING JURISDICTION OVER THE SITE INCLUDING BUT NOT LIMITED TO THE FOLLOWING:

- ACMA.
- LOCAL COUNCIL.
- LOCAL SUPPLY AUTHORITY.
- STATE GOVERNMENT DEPARTMENT OF ENVIRONMENT AND HERITAGE.
- QLD GOVERNMENT, DIVISION OF WORKPLACE, HEALTH AND SAFETY.
- QLD FIRE AND EMERGENCY SERVICES.

ENSURE ALL ASPECTS OF THE ELECTRICAL SERVICES COMPLY WITH THE FIRE ENGINEERING REPORT AND THE DEVELOPMENT APPROVAL.

5. CABLES

UNLESS OTHERWISE SPECIFIED, INSTALL AND TERMINATE CABLES IN ACCORDANCE WITH THE MANUFACTURERS’ RECOMMENDATIONS. DETERMINE THE FINAL ROUTES TO SUIT THE BUILDING STRUCTURE AND SITE CONDITIONS. UNLESS NOTED OTHERWISE, PROVIDE ALL 240 VOLT POWER AND LIGHTING WIRING AS 2.5mm² TWIN & EARTH STRANDED COPPER CONDUCTORS, PVC INSULATED 0.6/1kV V75 GRADE TO AS3174, PROTECTED BY A 20 AMP CIRCUIT BREAKER. ALL CONDUIT AND FITTINGS TO BE RIGID UPVC TO AS2053, UNLESS NOTED OTHERWISE.

6. POWER DISTRIBUTION

THE POWER DISTRIBUTION COMPONENT OF THE WORKS INCLUDES (TO BE CONFIRMED)

SUBMIT DETAILS OF ALL SUBMAIN ROUTES AND SUPPORT SYSTEMS FOR APPROVAL.

PROVIDE THE DISTRIBUTION BOARDS AS FOLLOWS:

- WALL MOUNTED.
- IP44 FORM 1.
- LIGHT GREY ENCLOSURE WHITE ESCUTCHEON.
- 3 POINT 92268 KEY LOCKABLE FLUSH HANDLES ON ALL DOORS.
- LIFT OFF HINGES ON ALL DOORS AND ESCUTCHEONS.
- 1/4 TURN LATCHES AND D HANDLES ON ALL ESCUTCHEONS.
- ALL SWITCHGEAR TO BE SCHNEIDER OR NHP/ TERASAKI.
- PROVIDE SHOP DRAWINGS FOR APPROVAL.
- 25% SPARE POLES AT PRACTICAL COMPLETION.
- ALL COMPONENTS ARE TO BE LABELLED WITH NON-STICK LABELS.

ENSURE ALL THREE PHASE CIRCUITS ARE PROVIDED WITH CORRECT PHASE ROTATION.

ENSURE ALL OUTLETS AND ISOLATORS ARE POSITIONED SUCH THAT THEY ARE NOT COVERED BY THE EQUIPMENT. THE FINAL POSITION OF ALL OUTLETS AND ISOLATORS ARE TO BE CONFIRMED ON SITE BY THE TENANTS REPRESENTATIVE.

DO NOT USE CORRUGATED CONDUIT UNDER ANY BARS, SERVERIES, OR IN THE KITCHENS. ALL OUTLETS AND SWITCHES WITHIN THE KITCHENS ARE TO BE IP56 SERIES OR STAINLESS STEEL.

THE POWER DISTRIBUTION COMPONENT OF THIS CONTRACT INCLUDES, BUT IS NOT LIMITED TO THE FOLLOWING EXTENT OF WORK:

- POWER DISTRIBUTION.
- MAIN SWITCHBOARD LABEL UPDATES.
- SUBMAINS.
- DISTRIBUTION BOARDS.
- CABLE ACCESS WAYS.
- CIRCUITS.
- ISOLATORS AND OUTLETS.
- TESTING AND COMMISSIONING.
- THERMOSCAN THE MSB AND ALL DISTRIBUTION BOARDS ONE WEEK AFTER PRACTICAL COMPLETION.

PROVIDE A CHART RECORDING OF THE MAINS CURRENT, VOLTAGE, FREQUENCY FOR THE FIRST 14 DAYS FOLLOWING PRACTICAL COMPLETION AND SUBMIT THE THERMOSCAN CHART RECORDING AND FOR APPROVAL.

7. LIGHTING

ALL OF THE LIGHT FITTINGS, LAMPS AND ACCESSORIES ARE TO BE PROVIDED AS PART OF THIS CONTRACT. THE LIGHTING COMPONENT OF THIS CONTRACT INCLUDES, BUT IS NOT LIMITED TO THE FOLLOWING EXTENT OF WORK:

- LIGHTING.
- LIGHT FITTINGS AND ACCESSORIES.
- EMERGENCY AND EXIT LIGHTING.
- EARTHING OF THE LIGHTING INSTALLATION.
- LIGHTING CONTROL.
- LIGHTING SUBCIRCUITS.
- TESTING AND COMMISSIONING.

ALL LIGHT SOURCES ARE TO BE SOLID STATE WITH AN AVERAGE LIFE OF 50,000 HOURS AND A MANUFACTURERS WARRANTY OF 5 YEARS. THE FRONT OF HOUSE LIGHTING IS TO BE 3,000K AND THE BACK OF HOUSE LIGHTING 4,000K. COORDINATE THE FITTING COLOURS WITH THE ARCHITECTURE / INTERIORS.

PROVIDE DIMMING OF THE FRONT OF HOUSE LIGHTING UTILISING A PHILIPS DYNALITE CONTROL SYSTEM. ALL DIMMING IS TO BE VIA DALI. PHASE DIMMING (TRAILING EDGE OR LEADING EDGE) IS NOT ACCEPTABLE. DALI TO PHASE DIMMING CONVERTS ARE NOT ACCEPTABLE. THE FRONT OF HOUSE LIGHTING CURRENTLY DETAILED HAS BEEN INCLUDED AS A BASE LINE OF THE FITTING STYLES THAT MUST BE ALLOWED FOR. UNDERTAKE A DESIGN PROCESS WITH ALL RELEVANT PARTIES TO FURTHER DEVELOP THE FRONT OF HOUSE LIGHTING TO THE SATISFACTION OF ALL PARTIES. ENSURE THE LIGHTING CONTROL SYSTEM IN EACH DISTRIBUTION BOARD HAS 10% SPARE DALI CHANNELS AND 10% SPARE SWITCHED CHANNELS IN THE ASSOCIATED DISTRIBUTION BOARD.

PROGRAM THE LIGHTING CONTROL SYSTEM TO THE SATISFACTION OF THE OPERATOR AT THE HANDOVER OF EACH STAGE, AGAIN AT 4 WEEKS POST PRACTICAL COMPLETION AND AGAIN AT 6 MONTHS POST PRACTICAL COMPLETION. THE POSITION OF ALL DRIVERS, POWER SUPPLIES AND CONTROLS THAT CAN NOT BE ACCESSED BY REMOVING THE FITTING MUST BE NOTED ON THE AS CONSTRUCTED DOCUMENTATION.

DO NOT SUPPLY MORE THAN 25 DRIVERS FROM A SINGLE CIRCUIT.

PROVIDE A SINGLE POINT EMERGENCY LIGHTING SYSTEM THAT COMPLIES WITH THE LATEST ISSUE OF ALL PARTS AS2293 AND THE RELEVANT PARTS OF THE NCC BCA. INSTALL EMERGENCY LIGHT FITTINGS NOMINATED AS MAINTAINED WITH THE LAMP PERMANENTLY ON SUPPLIED VIA AN UNSWITCHED ACTIVE MAINS SUPPLY WHEN THE MAINS SUPPLY IS AVAILABLE. WHEN THE MAINS SUPPLY IS NOT AVAILABLE, THE LAMP IS TO REMAIN ON SUPPLIED BY THE EMERGENCY PACK. SINGLE LAMP MAINTAINED EMERGENCY LIGHTS ARE NOT SWITCHED WITH THE LOCAL GENERAL AREA LIGHTING. (THE LAMP IS ALWAYS ON.)

NOTES

7. LIGHTING CONTINUED

INSTALL EMERGENCY LIGHT FITTINGS NOMINATED AS NON-MAINTAINED AS FOLLOWS:

- IF THE FITTING IS NOT BEING SWITCHED, THE LAMP IS TO REMAIN OFF WHEN THE MAINS SUPPLY IS AVAILABLE. WHEN THE MAINS SUPPLY IS NOT AVAILABLE THE LAMP IS TO BE SWITCHED ON SUPPLIED BY THE EMERGENCY PACK. UNSWITCHED SINGLE LAMP NON-MAINTAINED EMERGENCY LIGHTS ARE NOT SWITCHED WITH THE LOCAL GENERAL AREA LIGHTING. (THE LAMP IS ON ONLY WHEN THE MAINS SUPPLY IS NOT AVAILABLE.)
- IF THE FITTING IS BEING SWITCHED, THE LAMP IS TO BE SUPPLIED AND CONTROLLED WITH THE LOCAL GENERAL AREA LIGHTING WHEN THE MAINS SUPPLY IS AVAILABLE. WHEN THE MAINS SUPPLY IS NOT AVAILABLE THE LAMP IS TO BE SWITCHED ON, SUPPLIED BY THE EMERGENCY PACK. (THE LAMP IS ON WHEN TURNED ON WITH THE LOCAL GENERAL LIGHTING OR THE MAIN SUPPLY IS NOT AVAILABLE.)

INSTALL EMERGENCY LIGHTS SUCH THAT THE STATUS INDICATOR L.E.D. IS CLEARLY VISIBLE AND THE TEST BUTTONS ARE READILY ACCESSIBLE. LABEL EACH CIRCUIT BREAKER WHICH CONTROLS THE UNSWITCHED ACTIVE TO EXIT LIGHTS WITH A LABEL FIXED ADJACENT; ENGRAVED PLASTIC LAMINATE, GREEN BACKGROUND WITH WHITE CHARACTERS: –

WARNING  
INTERRUPTING SUPPLY WILL DISCHARGE  
EMERGENCY LIGHTING BATTERIES

PROVIDE WRITTEN EVIDENCE OF THE INITIAL COMMISSIONING AND TESTING AND TESTING FOR THE DURATION OF THE MAINTENANCE PERIOD IN ACCORDANCE WITH AS 2293.2.

THIS EVIDENCE IS TO BE IN THE FORM OF A LOG BOOK SIMILAR TO THE GENERAL LIGHTING SERVICE PTY LTD “EMERGENCY LIGHTING MAINTENANCE LOG BOOK AND MANUAL” WHICH IS TO BE PROVIDED BY THE ELECTRICAL SUB-CONTRACTOR AND HAVE ALL ENTRIES FULLY COMPLETED AND BE PRESENTED FOR INSPECTION AT PRACTICAL COMPLETION. THE LOG BOOK IS TO BE RETAINED BY THE ELECTRICAL SUB-CONTRACTOR FOR THE DURATION OF THE MAINTENANCE PERIOD, AND THE SIX MONTHLY TEST AND MAINTENANCE RESULTS ENTERED. THE LOG BOOK IS TO BE PRESENTED FOR APPROVAL AT FINAL COMPLETION (EXPIRY OF THE MAINTENANCE PERIOD) AND WILL BE FORWARDED TO THE OPERATOR FOR THEIR USE.

PROVIDE MAINTENANCE OF THE EMERGENCY AND EXIT LIGHTING INSTALLATION INCLUDING RECORDS IN ACCORDANCE WITH THE LATEST ISSUE OF ALL PARTS AS2293 AND THE RELEVANT PARTS OF THE NCC BCA. PROVIDE THE EMERGENCY LIGHTING SYSTEM WITH A SUPPLY SENSING AND TESTING FACILITY MOUNTED IN DB-3 IN ACCORDANCE WITH AS 2293.1.

8. COMMUNICATIONS CABLING

THE COMMUNICATIONS CABLING COMPONENT OF THIS CONTRACT INCLUDES (TO BE CONFIRMED)

THE CAT 6 UTP COMMUNICATIONS CABLING, GAMING CABLING, CAT 6 A STP CABLING AND CCTV CAT 6 CABLING ARE TO BE PROVIDED AS UNIQUE COLOURED CABLING TERMINATED ONTO PATCH PANELS DEDICATED TO THE RESPECTIVE SERVICE. PROVIDE THE COMMUNICATIONS CABLING COMPONENT OF THIS CONTRACT AS A COMMSCOPE OR MOLEX CAT 6 INSTALLATION WITH A 15 YEAR MANUFACTURERS PERFORMANCE WARRANTY. THE COMMUNICATIONS CABLING COMPONENT OF THIS CONTRACT INCLUDES, BUT IS NOT LIMITED TO THE FOLLOWING EXTENT OF WORK:

- MODIFICATIONS TO THE EXISTING COMMUNICATIONS RACKS.
- PATCH PANELS.
- CAT 6 COMMUNICATIONS OUTLETS AND CABLING.
- CAT 6A STP COMMUNICATIONS OUTLETS AND CABLING.
- CAT 6 CCTV PLUGS AND CABLING.
- GAMING CAT 6 COMMUNICATIONS OUTLETS AND CABLING.
- FIBRE CABLING.
- FOBOTS.
- INSTALLATION OF THE GAMING FIBRE CABLING.
- CABLE ACCESS WAYS.
- TESTING AND COMMISSIONING.

9. FIRE ALARM SYSTEM.

THE FIRE ALARM SYSTEM COMPONENT OF THIS CONTRACT INCLUDES THE REPLACEMENT OF THE ENTIRE EXISTING FIRE ALARM SYSTEM THROUGHOUT THE RENOVATED AREAS AND THE EXISTING AREAS OUTSIDE OF THE RENOVATED AREAS. THE NEW FIRE ALARM SYSTEM IS TO BE PROVIDED AS AN AS1670.1 COMPLIANT ADDRESSABLE SYSTEM. THE FIRE ALARM SYSTEM COMPONENT OF THIS CONTRACT INCLUDES, BUT IS NOT LIMITED TO THE FOLLOWING EXTENT OF WORK:

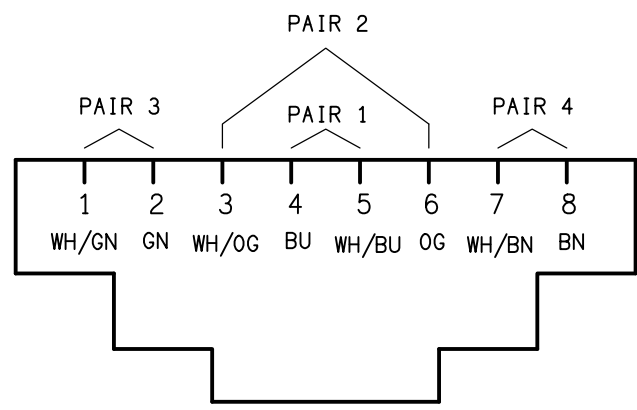
- FIRE INDICATOR PANEL INCORPORATING AN FDCIE AND EWCIIE.
- HORNS AND SPEAKERS.
- VISUAL ALARM DEVICE.
- LIFT SHAFT ASPIRATING SMOKE DETECTION.
- SMOKE DETECTORS.
- THERMAL DETECTORS.
- CONCEALED SPACE DETECTORS.
- CONCEALED SPACE DETECTOR ACCESS.
- CABLING.
- INTERFACE TO THE KITCHEN GAS CONTROL SYSTEMS.
- INTERFACE TO THE SECURITY SYSTEM.
- INTERFACE TO THE AUDIO SYSTEM.
- CABLE ACCESS WAYS.
- TESTING AND COMMISSIONING.

10. ABBREVIATIONS.

A – AMP CURRENT RATING  
AB – MOUNT ABOVE BENCH.  
AFFL – ABOVE FINISHED FLOOR LEVEL.  
BB – MOUNT BELOW BENCH.  
CEIL – MOUNT ON CEILING.  
C/W – COMPLETE WITH.  
HWS – HOT WATER SYSTEM.  
MCB – MINIATURE CIRCUIT BREAKER.  
MCCB – MOLDED CASE CIRCUIT BREAKER.  
MSB – MAIN SWITCHBOARD.  
N – NEON / LED INDICATOR WHEN ON.  
NBN – NATIONAL BROADBAND NETWORK.  
NTS – NOT TO SCALE.  
QDC – QUEENSLAND DEVELOPMENT CODE.  
RCBO – CIRCUIT BREAKER C/W AN INTEGRAL 30mA RESIDUAL CURRENT DEVICE.  
RCD – CIRCUIT PROTECTED VIA A 30mA RESIDUAL CURRENT DEVICE.  
RSD – ROLLER SHUTTER DOOR.  
UNO – UNLESS NOTED OTHERWISE.  
WAP – WIRELESS ACCESS POINT.  
WP – WEATHERPROOF TO IP56 UNO.  
500 – NUMBER DENOTES MOUNTING HEIGHT AFFL.

ELECTRICAL DESIGN GROUP BRISBANE PTY LTD ACN 092 710 793		THE COPYRIGHT OF THIS DRAWING REMAINS THE PROPERTY OF THE ELECTRICAL DESIGN GROUP.		PROJECT: BRACKEN RIDGE TAVERN		A PRELIMINARY28/02/2025	
TRADING AS: ELECTRICAL DESIGN GROUP		USE FIGURED DIMENSIONS IN PREFERENCE TO SCALE.		REV: DESCRIPTION:		DRAWING: ELECTRICAL SERVICES NOTES	
		ALL DIMENSIONS TO BE VERIFIED ONSITE.		BRISBANE		DATE:	
				P.O.Box 15, Sherwood Q.4075 Phone: (07) 3278 4375 Email: brisbane@edg.net.au Web: www.edg.net.au			
				154 BARRETT STREET, BRACKEN RIDGE		SCALE: NOT TO SCALE AT A1	
						PROJECT NO: C3358a	
						DRAWING NO: E02	
						REVISION: A	

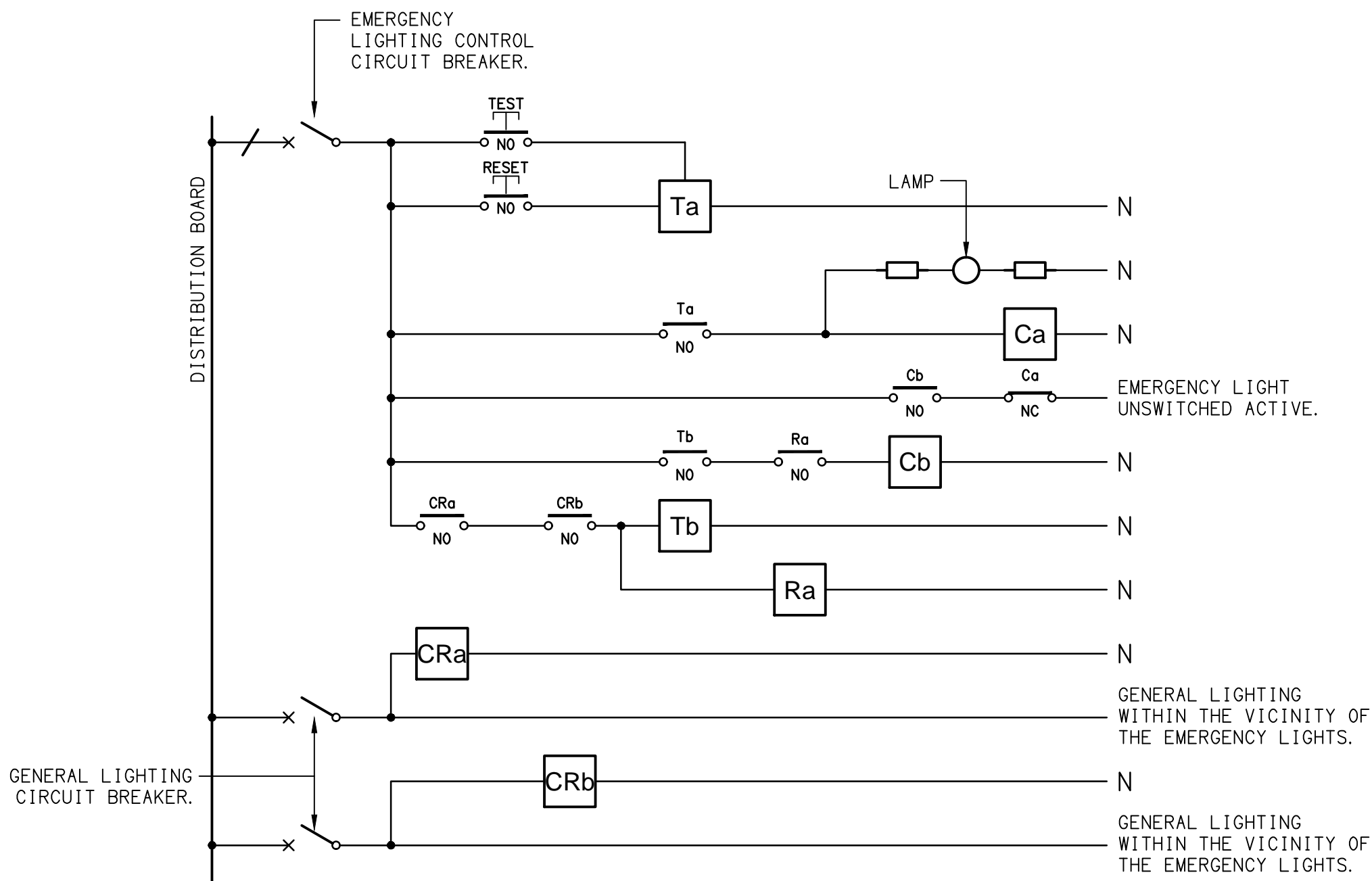




**SCHEMATIC**  
RJ45 PINOUT CONFIGURATION  
NOT TO SCALE

**EQUIPMENT:**

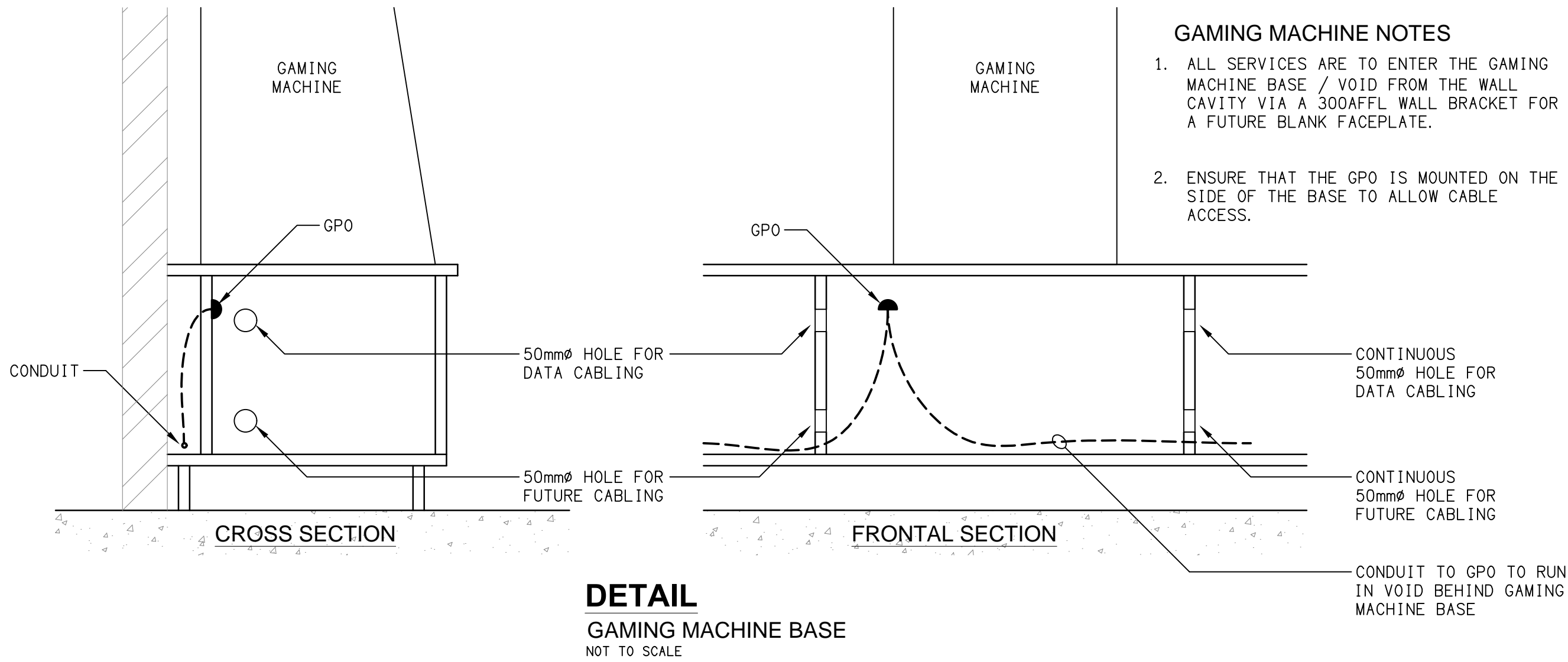
- TEST – TEST PUSH BUTTON MOUNTED ON THE DISTRIBUTION BOARD ESCUTCHEON.
- RESET – RESET PUSH BUTTON MOUNTED ON THE DISTRIBUTION BOARD ESCUTCHEON.
- LAMP – AMBER TEST INDICATING LAMP MOUNTED ON THE DISTRIBUTION BOARD ESCUTCHEON.
- Ta – ADJUSTABLE 0-3 HOUR TIMED RELAY.
- Tb – 15 MINUTE RUN-ON TIMER TO OPERATE UPON THE RETURN OF MAINS POWER.
- Cx – CONTACTOR x.
- CRx – CONTROL RELAY x.
- Rx – RELAY x.



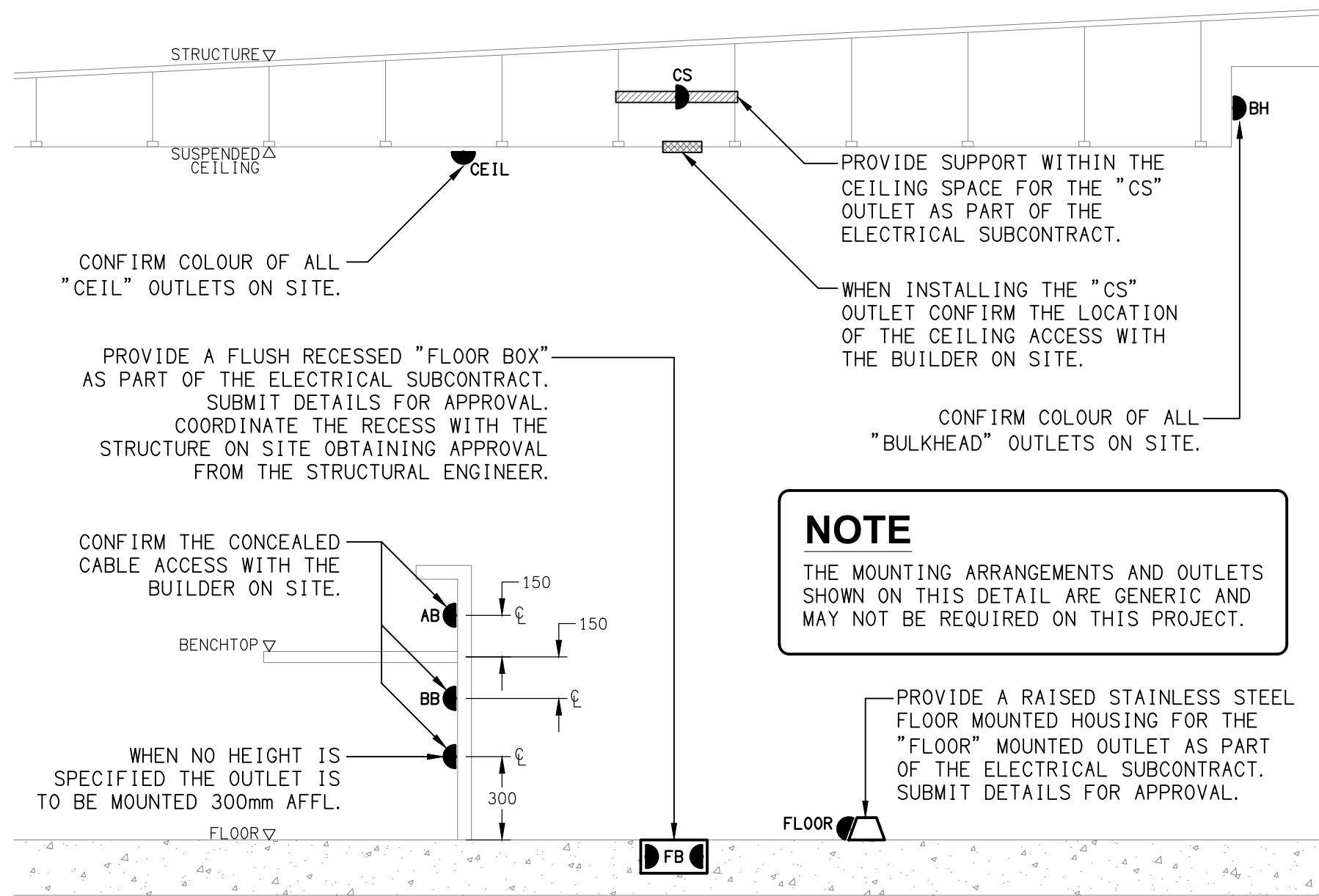
**NOTES**

- THE EMERGENCY LIGHT UNSWITCHED ACTIVE / GENERAL LIGHTING SWITCHED ACTIVE CIRCUIT ARRANGEMENT AND CONTROL IS TYPICAL FOR ALL CIRCUITS SUPPLYING EMERGENCY LIGHTS.
- PROVIDE ADDITIONAL CONTROL RELAYS (CRx) CONFIGURED AS PER CRa AND CRb FOR ALL ADDITIONAL LIGHTING CIRCUITS THAT SUPPLY LIGHTS IN THE VICINITY OF THE EMERGENCY LIGHTS.

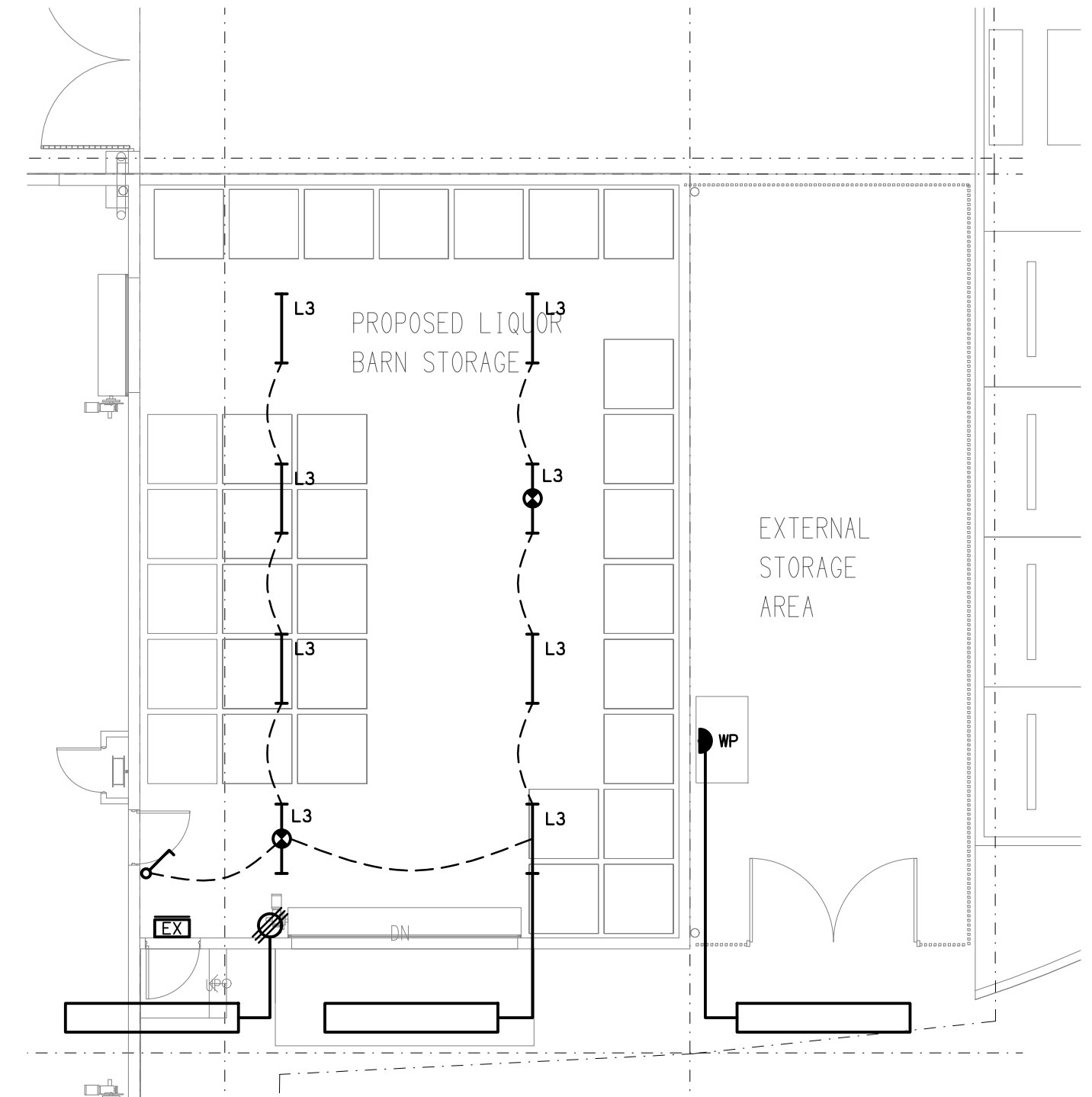
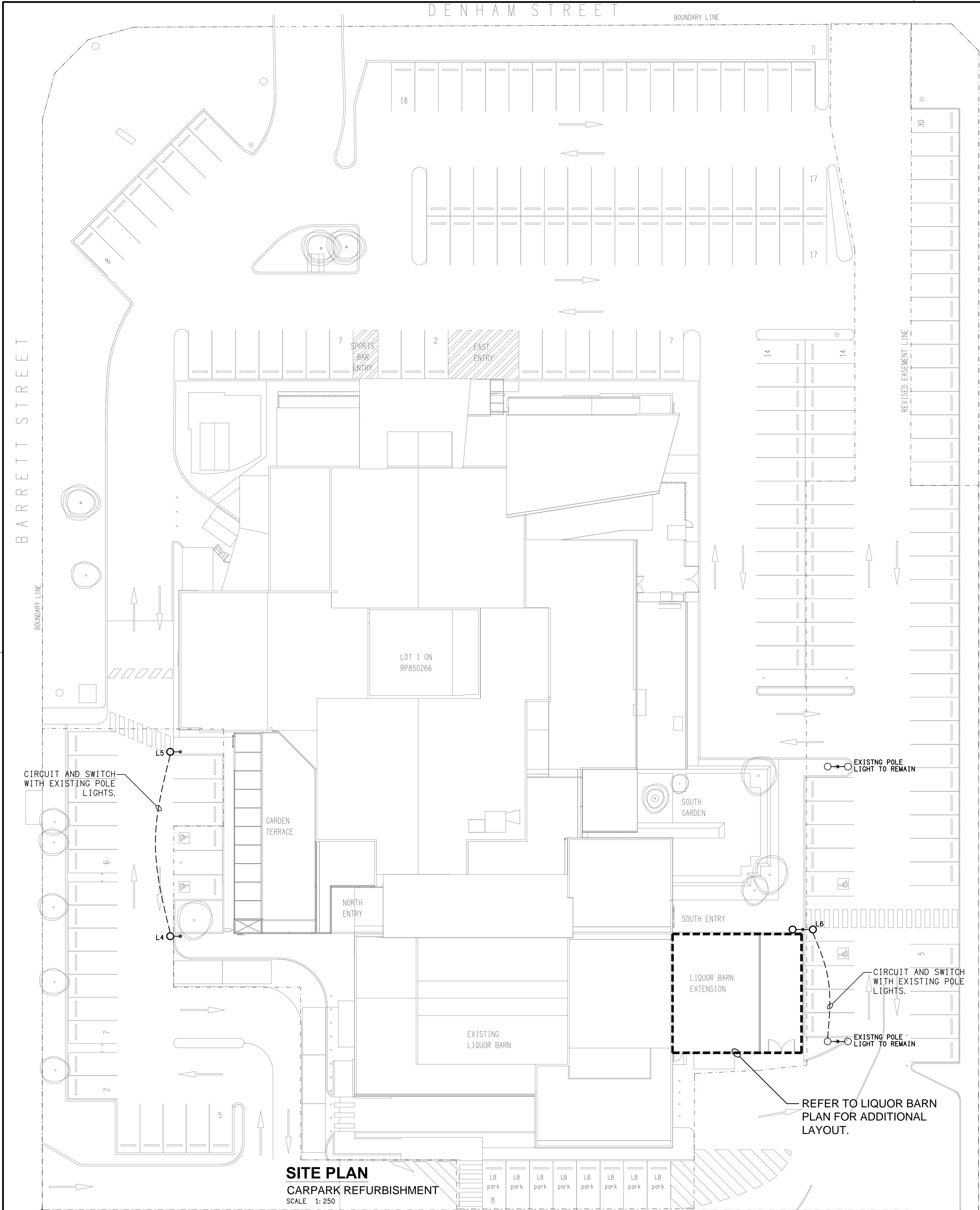
**SCHEMATIC**  
EMERGENCY LIGHTING  
NOT TO SCALE

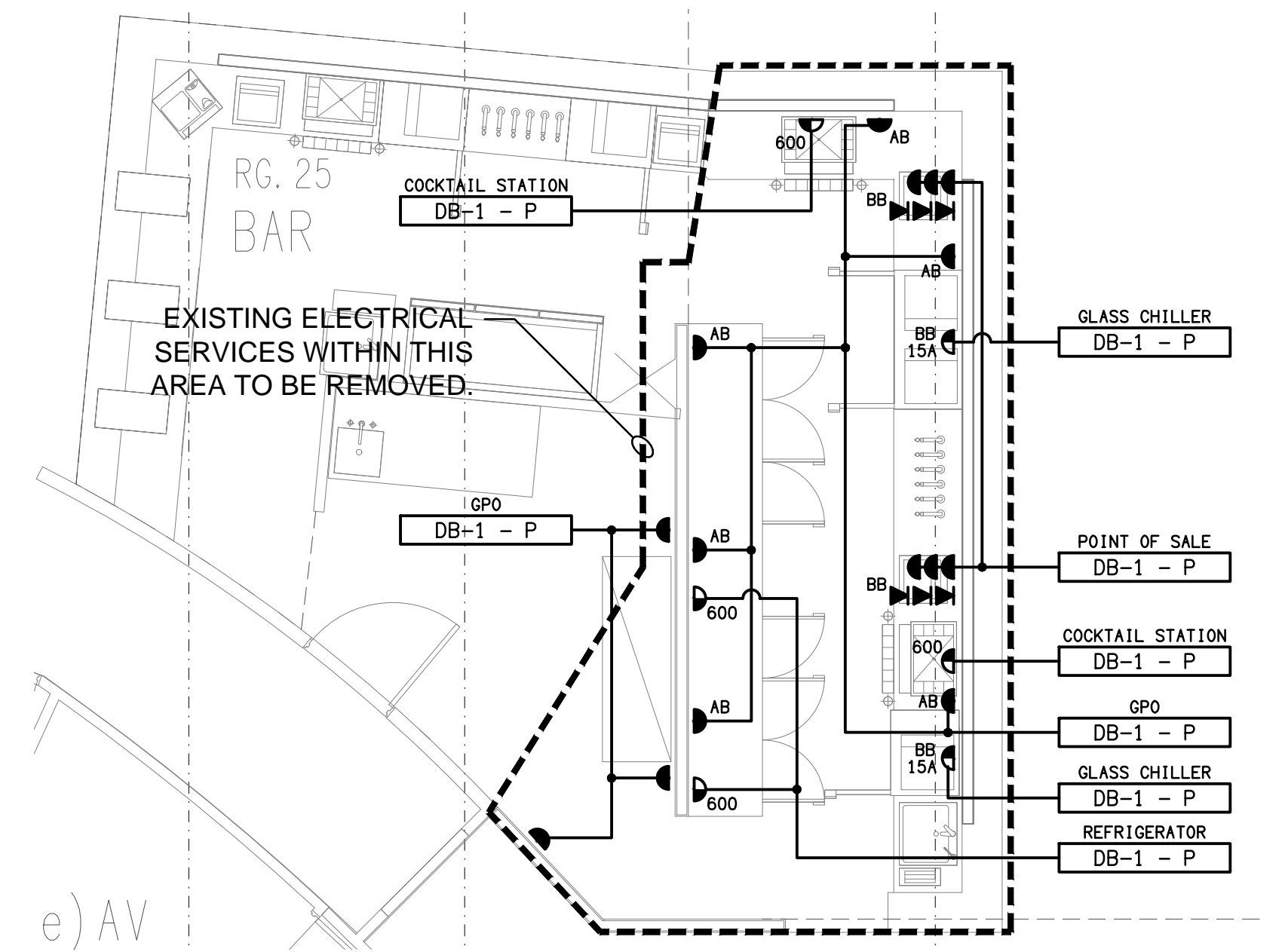


**DETAIL**  
GAMING MACHINE BASE  
NOT TO SCALE

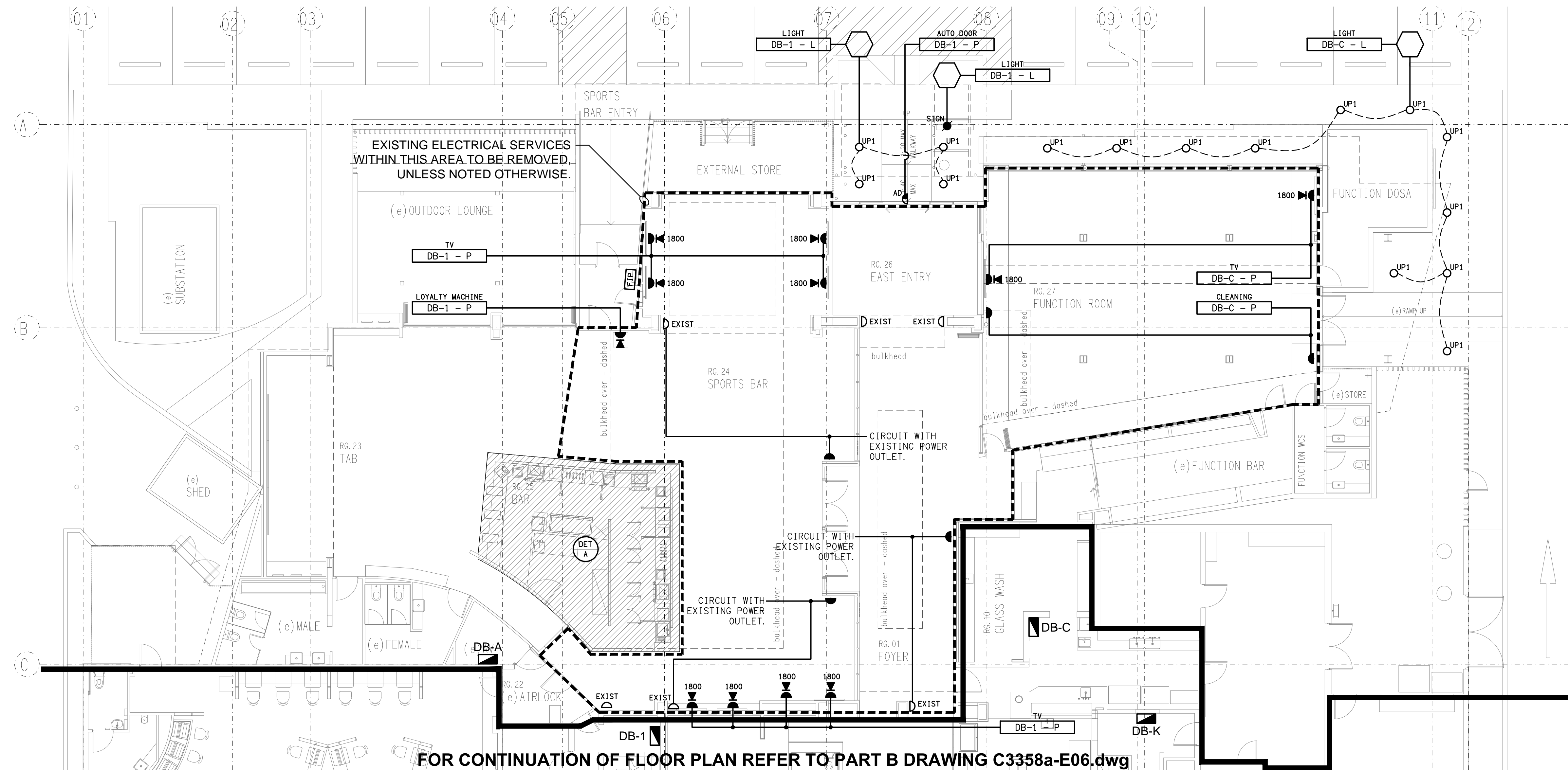


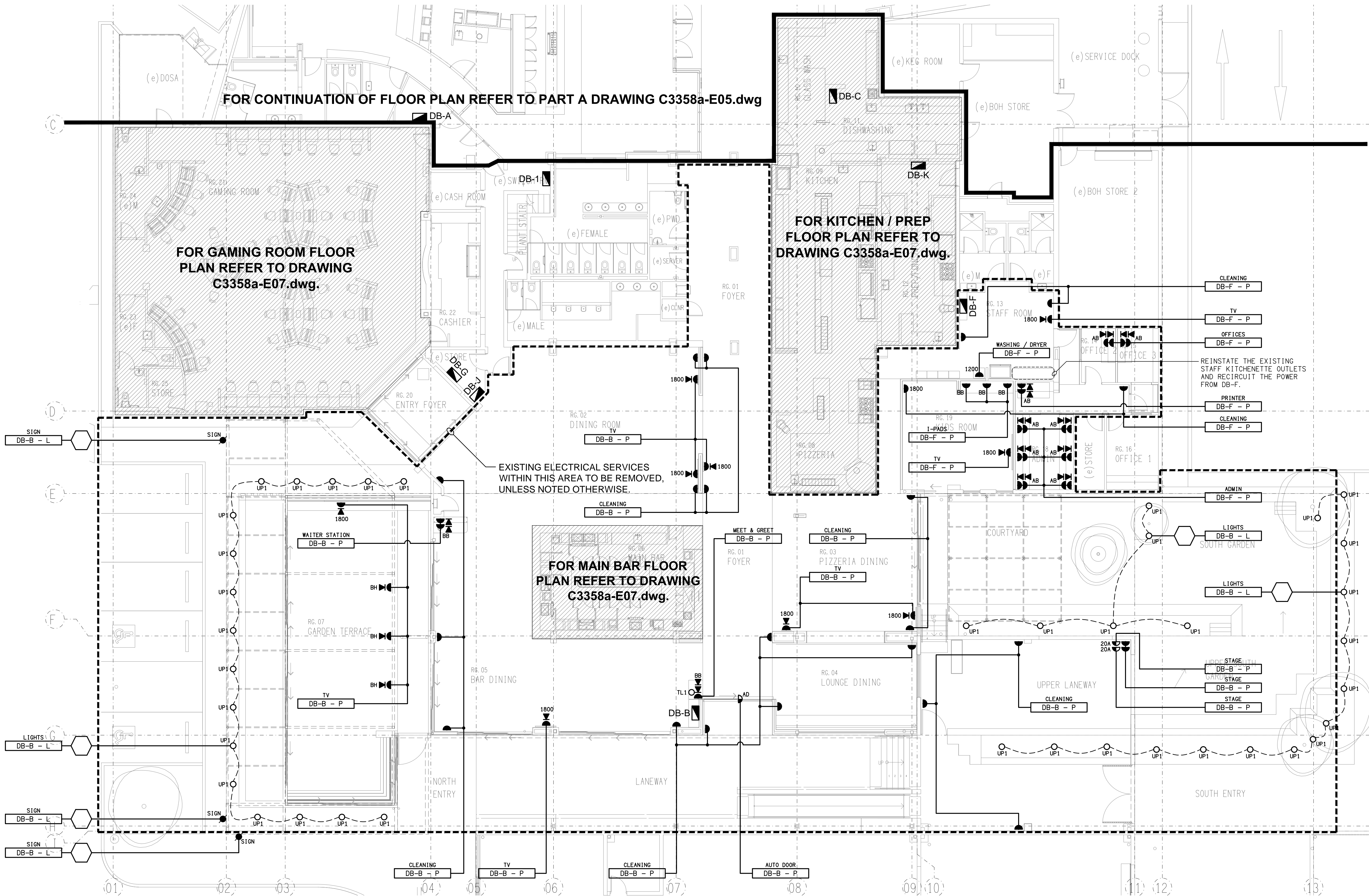
**DETAIL**  
TYPICAL OUTLET MOUNTINGS  
NOT TO SCALE





**DETAIL A**  
SPORTS BAR FLOOR PLAN  
SCALE 1:50









DRAWING: <b>ELECTRICAL SERVICES</b>			
<b>PART B</b>			
<b>FLOOR PLAN DETAILS</b>			
SCALE: <b>1:50 UNO</b>	PROJECT NO: <b>C3358a</b>	DRAWING NO: <b>E07</b>	REVISION: <b>A</b>

PROJECT:

BRACKEN RIDGE TAVERN

154 BARRETT STREET, BRACKEN RIDGE

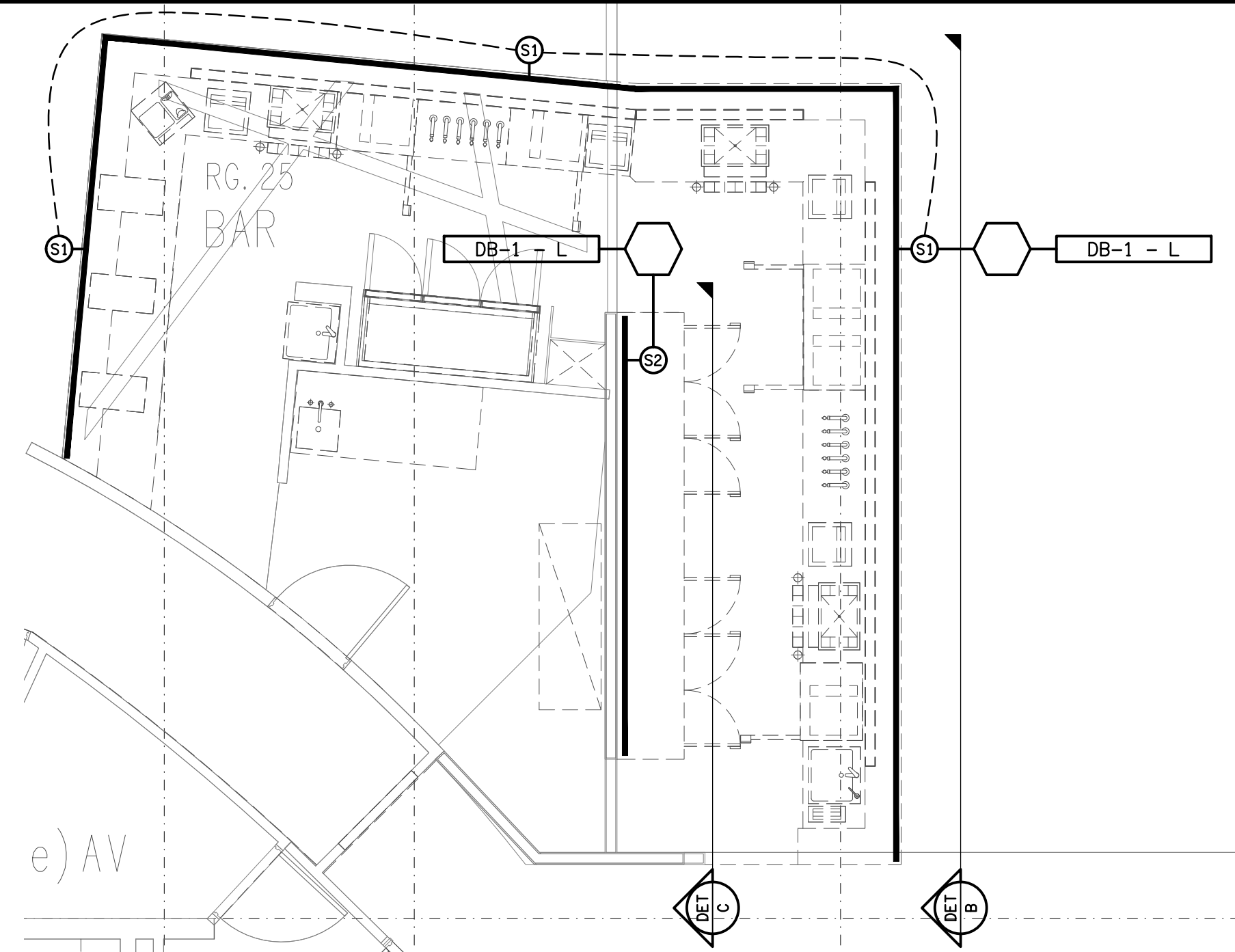
DRAWING:  
**ELECTRICAL SERVICES**  
PART B  
FLOOR PLAN DETAILS

PENDING FURTHER INFORMATION

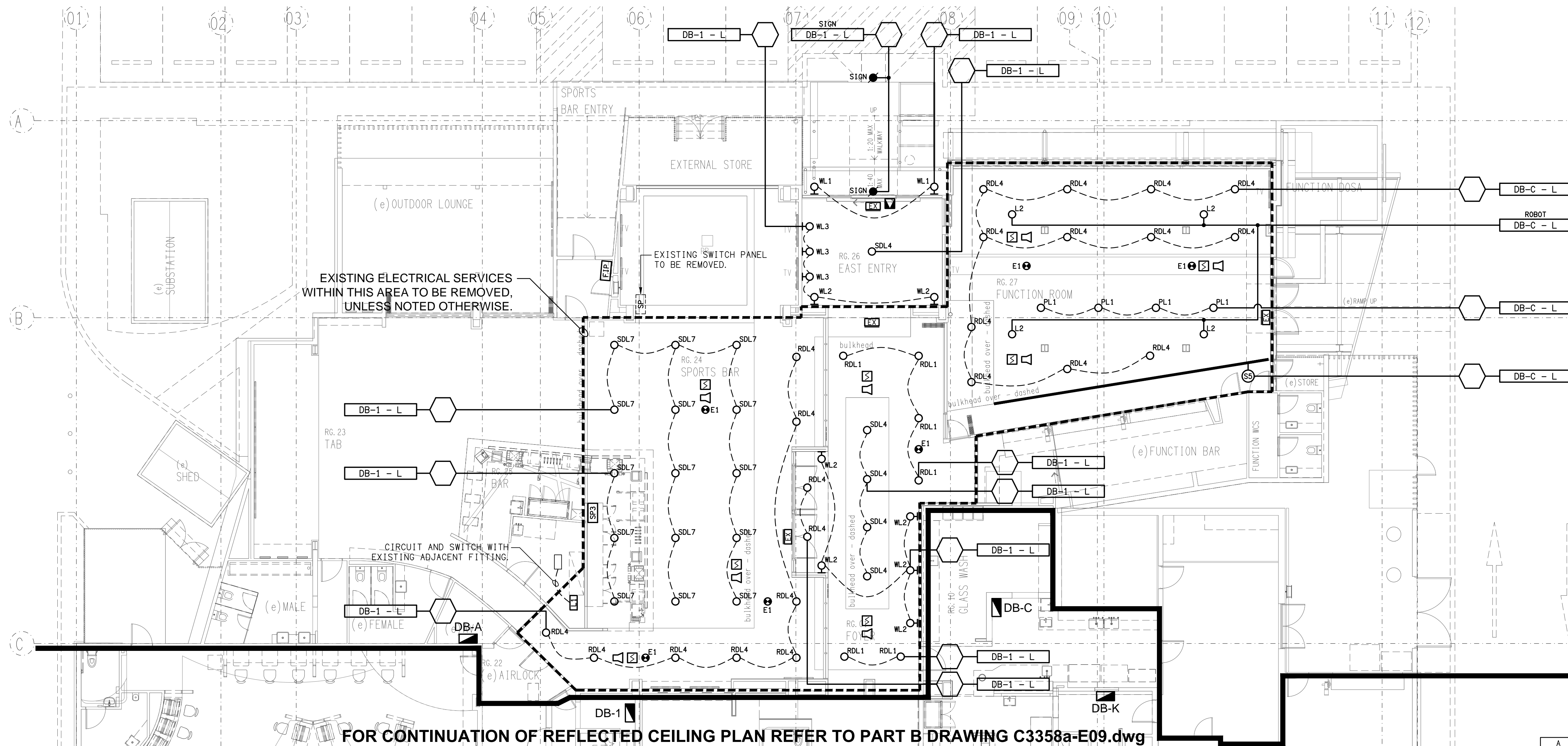
PENDING FURTHER INFORMATION

**DETAIL B**  
SPORTS BAR FRONT COUNTER ELEVATION  
SCALE 1: 50

**DETAIL C**  
SPORTS BAR REAR WALL ELEVATION  
SCALE 1: 50



**DETAIL A**  
SPORTS BAR LIGHTING PLAN  
SCALE 1: 50



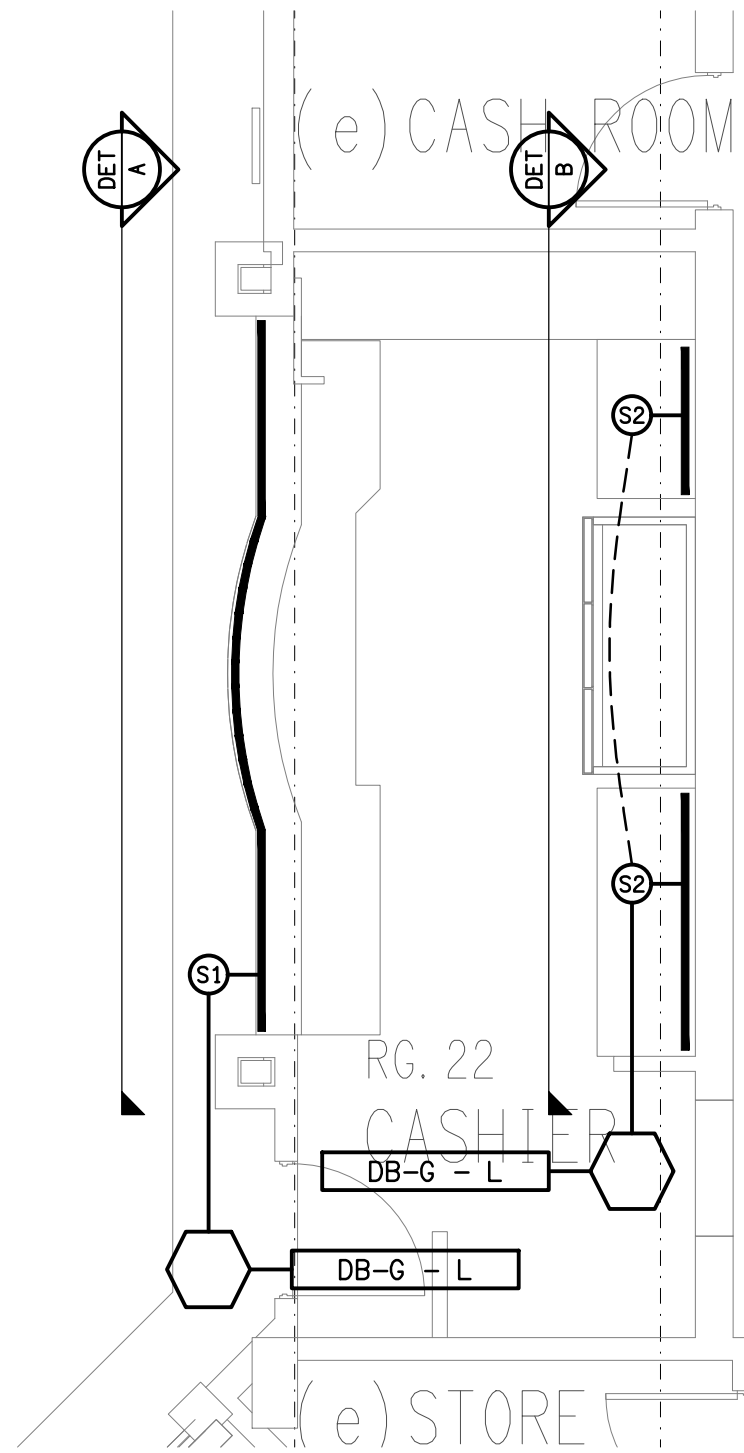


FOR CONTINUATION OF REFLECTED CEILING PLAN REFER TO PART A DRAWING C3358a-E08.dwg

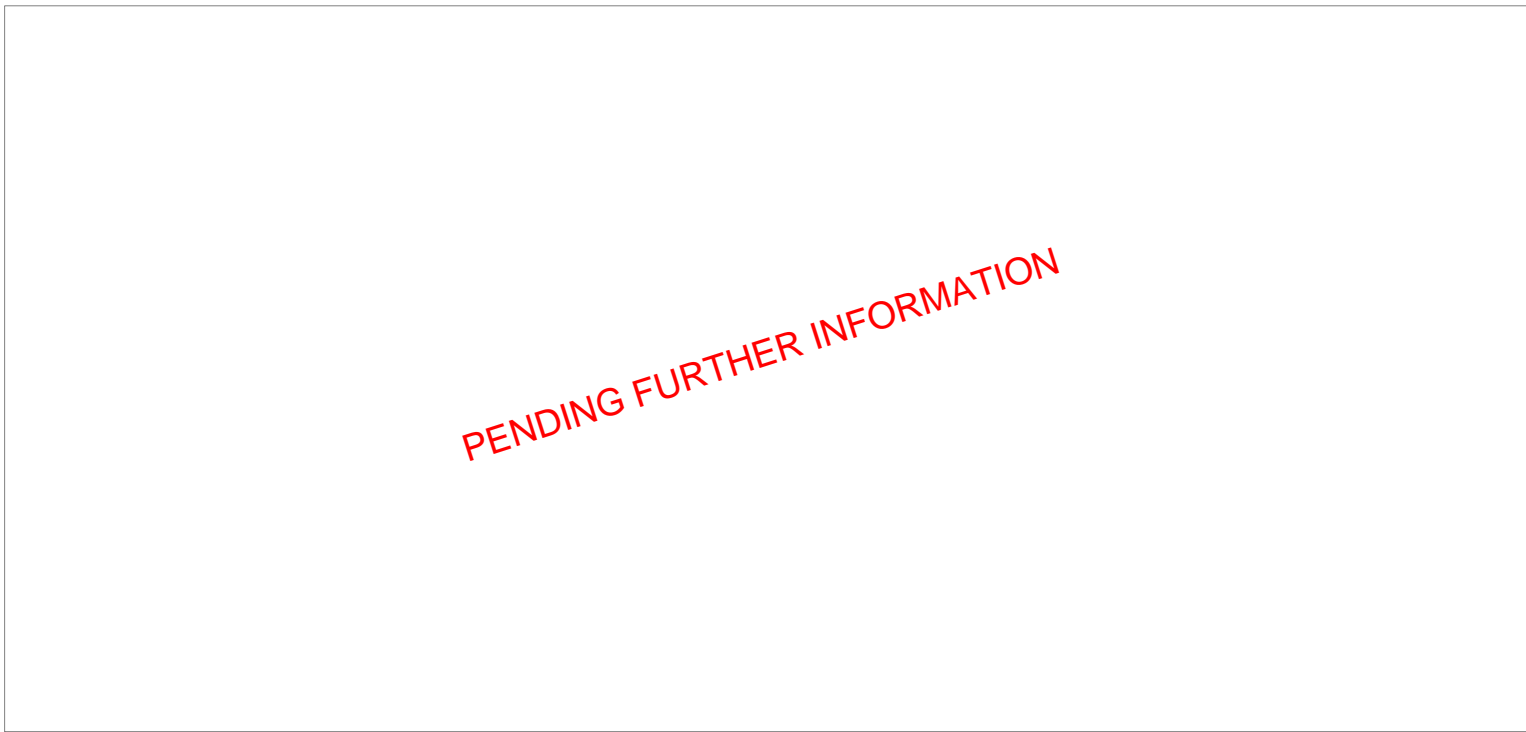
**NOTE:**  
REFER TO DRAWING C3358a-E10.dwg  
FOR ADDITIONAL JOINERY LIGHTING  
DETAILS.

EXISTING ELECTRICAL SERVICES  
WITHIN THIS AREA TO BE REMOVED,  
UNLESS NOTED OTHERWISE.

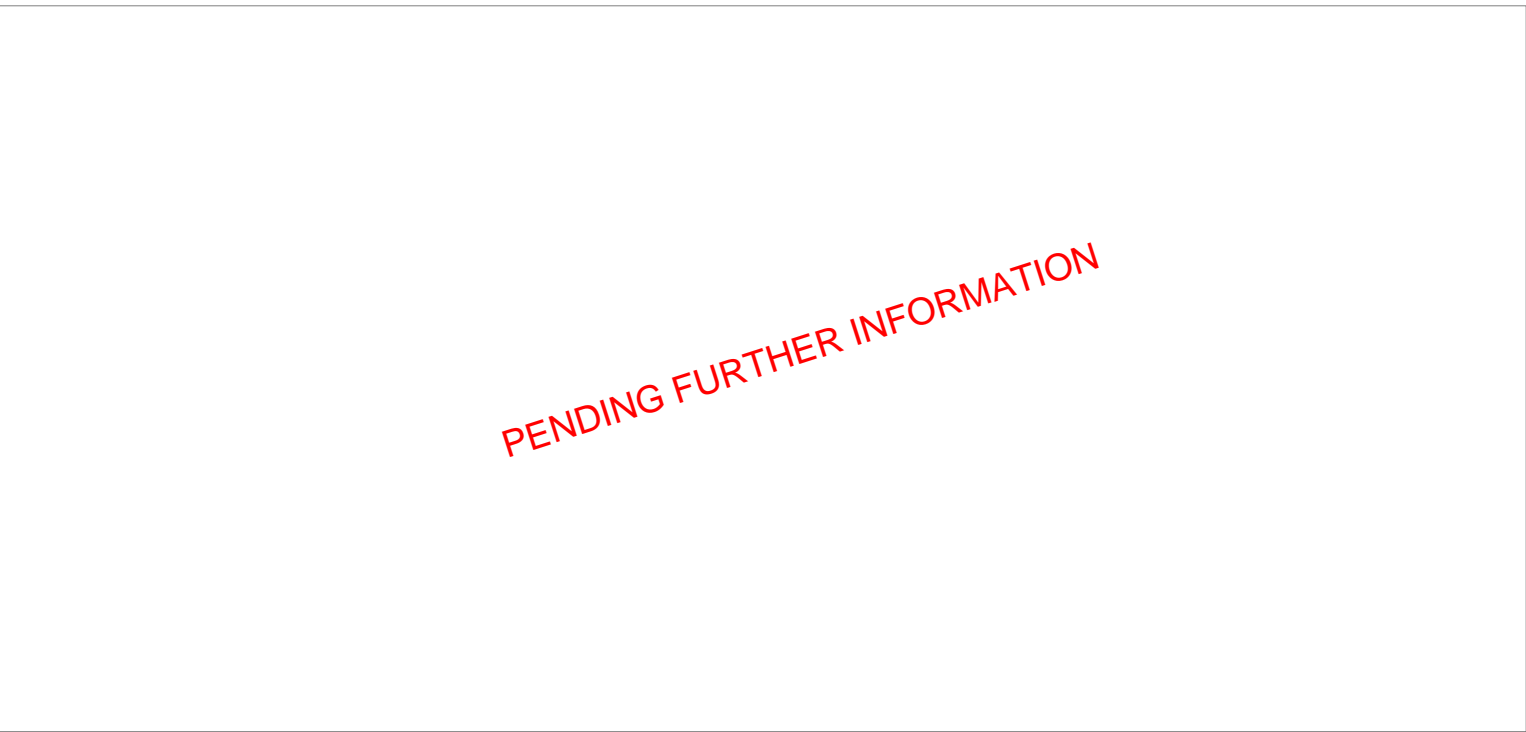
EXISTING ELECTRICAL SERVICES  
WITHIN THIS AREA TO BE REMOVED,  
UNLESS NOTED OTHERWISE.



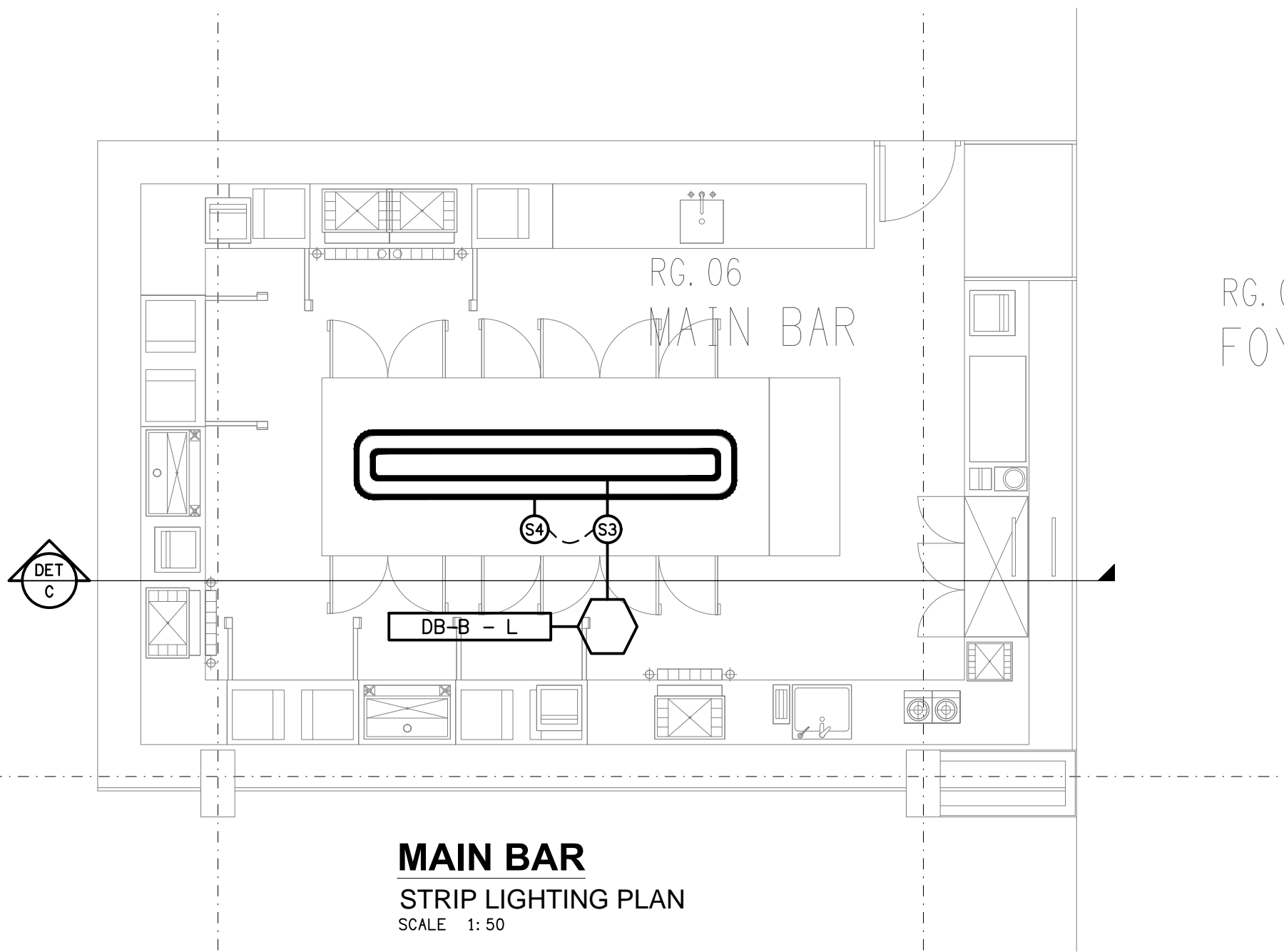
**CASHIER ROOM**  
STRIP LIGHTING PLAN  
SCALE 1: 50



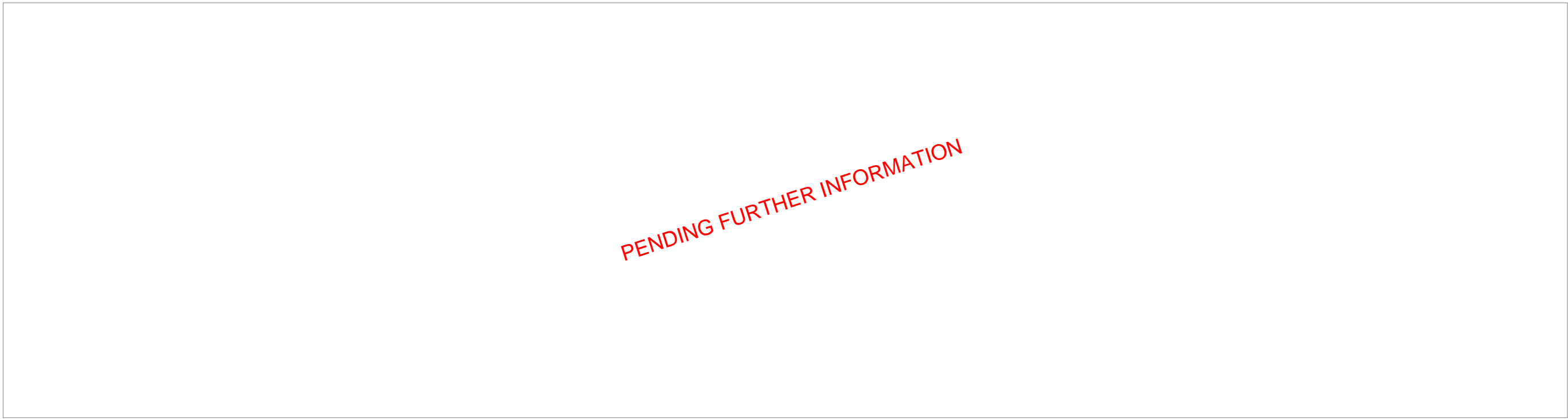
**DETAIL A**  
CASHIER FRONT COUNTER ELEVATION  
SCALE 1: 25



**DETAIL B**  
CASHIER REAR WALL ELEVATION  
SCALE 1: 25



**MAIN BAR**  
STRIP LIGHTING PLAN  
SCALE 1: 50



**DETAIL C**  
MAIN BAR DRINKS ISLAND ELEVATION  
SCALE 1: 25