



ELECTRICAL DESIGN GROUP

ELECTRICAL BUILDING SERVICES CONSULTANTS

P.O. Box 15, SHERWOOD Q. 4075

Phone: (07) 3278 4375

Website: www.edg.net.au Email: brisbane@edg.net.au

C3398a - CITIPOINTE REDCLIFFE CHURCH - CAFE

C3398a-0001(A).xls

ELECTRICAL SERVICES CONTRACT DOCUMENT SCHEDULE

REVISION A - 04 FEBRUARY 2025

ISSUING INFORMATION				DATE OF ISSUE							
	DAY	04									
	MONTH	02									
	YEAR	25									
	REASON FOR ISSUE	P									
AC = AS CONSTRUCTED C = CONSTRUCTION N = COORDINATION P = PRELIMINARY T = TENDER											

DISTRIBUTION			NUMBER OF COPIES							
WWW.EDG.NET.AU			1E							
FOUCHE ARCHITECTS			1E							
P = PRINT T = TRACING D = DISC E = EMAIL F = FAX										

DOCUMENTS	TITLE	REVISION							
C3398a-E01.dwg	LEGEND, NOTES & LOCATION PLAN	A							
C3398a-E02.dwg	FLOOR AND REFLECTED CEILING PLANS	A							
C3398a-0001.xls	CONTRACT DOCUMENT SCHEDULE	A							
C3398a-0001.zip	FITTING & OUTLET DATASHEETS								

NOTES

1. EXTENT OF WORKS

THE ELECTRICAL SERVICES SUB-CONTRACT INCLUDES BUT IS NOT LIMITED TO THE FOLLOWING:

- SUPPLY AND INSTALLATION OF ALL COMPONENTS FORMING PART OF THE ELECTRICAL SERVICES.
- CO-ORDINATION.
- INSPECTIONS.
- TESTING AND COMMISSIONING.
- MAINTENANCE.
- CABLING, CABLE SUPPORT SYSTEMS AND ACCESS.
- POWER DISTRIBUTION.
- LIGHTING.
- COMMUNICATIONS.
- RELOCATE THE EXISTING INTRUDER DETECTOR SENSOR.
- MODIFICATION OF EXISTING SERVICES AS REQUIRED.
- ALL MINOR COMPONENTS AND INCIDENTAL WORKS NOT SPECIFICALLY REFERRED TO, HOWEVER NECESSARY TO COMPLETE THE ELECTRICAL SERVICES INSTALLATION SUCH THAT IT IS HANDED OVER COMPLETE, OPERATIONAL AND FIT FOR THE INTENDED USE.

SUPPLY ALL LABOUR, MATERIALS, EQUIPMENT, AND ALL OTHER ITEMS, WHETHER MENTIONED IN DETAIL OR NOT, REQUIRED FOR THE SATISFACTORY COMPLETION OF THE ELECTRICAL SERVICES INSTALLATION, LEAVING IN FULL WORKING ORDER TO THE SATISFACTION OF THE PROJECT MANAGER.

ACCEPT FULL RESPONSIBILITY FOR LIASING, ARRANGING AND CO-ORDINATION ALL WORKS THAT HAVE AN EFFECT ON OR WILL BE AFFECTED BY THE ELECTRICAL SERVICES.

REMOVE ALL OF THE EXISTING ELECTRICAL SERVICES THAT BECOME REDUNDANT DUE TO THE WORKS.

RELOCATE THE EXISTING PE CELL AND SECURITY STROBE SIREN. RELOCATE THE EXISTING NBN ENCLOSURE AND ASSOCIATED NBN CABLE ACCESS TO THE SATISFACTION OF THE NBN CO. PROVIDE NEW NBN COMPLIANT NBN CABLE ACCESS AND ARRANGE FOR THE NBN TO RELOCATE / PROVIDE NEW CABLING TO FACILITATE THE WORKS. THE NBN CO COSTS WILL BE PAID DIRECTLY BY THE OPERATOR.

REMOVE THE EXISTING SURFACE CONDUITS AND ISOLATORS PASSING THROUGH / LOCATED IN THE WORKS AREAS AND PROVIDE NEW CABLING TO THE NEW ISOLATOR POSITIONS CONFIRMED ON SITE.

2. WORKMANSHIP

ENSURE THAT THE WORK IS PERFORMED BY THE HOLDER OF A CURRENT ELECTRICAL SUB CONTRACTOR LICENSE. ENSURE THE INSTALLATION AND ALL COMPONENTS, FIXTURES, FITTINGS, OUTLETS AND CABLES ARE SUPPLIED AND INSTALLED TO A HIGH STANDARD THROUGHOUT, AND INSTALLED IN A NEAT AND TRADESMAN LIKE MANNER, TO THE CURRENT INDUSTRY STANDARDS. ENSURE ALL MATERIALS AND COMPONENTS OF A SIMILAR TYPE ARE OF THE SAME MANUFACTURER AND INSTALLED IN A UNIFORM MANNER.

IT IS THE ELECTRICAL SUB CONTRACTOR'S RESPONSIBILITY TO ENSURE THAT THE INSTALLATION IS FIT FOR PURPOSE AND IS PROVIDED AS A COMPLETE WORKING INSTALLATION. IT IS THE ELECTRICAL SUB CONTRACTOR'S RESPONSIBILITY TO PROVIDE ALL COMPONENTS, FITTINGS, FIXTURES, SYSTEMS, PROGRAMMING ETC IRRESPECTIVE OF THE LEVEL DETAILED IN THE DOCUMENTS SUCH THAT THE INSTALLATION IS PROVIDED AS A COMPLETE WORKING INSTALLATION.

CONCEAL ALL WIRING AND CONDUITS. EXPOSED CABLING OR CONDUITS ARE GENERALLY NOT ACCEPTABLE. IT IS NOTED THAT CHASING AND REINSTATEMENT WILL BE REQUIRED. ENSURE ALL COMPONENTS, EQUIPMENT AND MATERIALS SUPPLIED ARE NEW, UNUSED, DESIGNED AND SELECTED TO ENSURE SATISFACTORY OPERATION UNDER VARYING ATMOSPHERIC, CLIMATIC, HUMID TROPICAL CONDITIONS WITHOUT DISTORTION AND DETERIORATION IN ANY PART AFFECTING EFFICIENCY AND RELIABILITY OF THE SYSTEMS. DESIGN AND SELECT ALL EQUIPMENT TO PROVIDE THE NECESSARY SAFETY TO HUMAN LIFE AND PROPERTY DURING OPERATION AND MAINTENANCE WITH PARTICULAR ATTENTION GIVEN TO ELECTRICAL SAFETY AND SEGREGATION PRECAUTIONS.

CHECK THE FINISHED PAINTWORK AROUND THE AREA OF EACH INSTALLATION AND TOUCH UP ALL DAMAGED PARTS AND FINISHES AFTER THE INSTALLATION OF THE ELECTRICAL SERVICES.

ALL WORKS ARE TO BE CARRIED OUT IN ACCORDANCE WITH THE BUILDER'S PROGRAM. ENSURE ALL FINAL LOCATIONS OF OUTLETS AND FITTINGS ARE CO-ORDINATED ONSITE WITH THE ARCHITECT AND ALL OTHER SERVICES, TO THE APPROVAL OF THE PROJECT MANAGER. ALLOW TO CO-ORDINATE THE FINAL LOCATION OF ALL EQUIPMENT, FITTINGS, & OUTLETS, SUCH THAT THEY ARE INSTALLED IN ACCORDANCE WITH THE AS3000 RESTRICTED ZONES, AND ARE NOT COVERED INAPPROPRIATELY.

ENSURE THAT ALL METAL SURFACES ARE SUITABLY PROTECTED AGAINST CORROSION, AND THAT ALL PLASTIC MATERIALS ARE UV STABILISED.

PROVIDE ALL MATERIALS AS NEW, AND OF THE HIGHEST CLASS AVAILABLE FOR THEIR RESPECTIVE TYPES. ENSURE ALL ASPECTS OF THE WORK ARE OF A HIGH STANDARD THROUGHOUT, AND INSTALLED IN A NEAT AND TRADESMAN LIKE MANNER, TO THE CURRENT INDUSTRY STANDARDS.

3. STANDARDS

IRRESPECTIVE OF INFORMATION CONTAINED IN THE ELECTRICAL SERVICES DOCUMENTS OR IN INSTRUCTIONS, IT IS THE ELECTRICAL SUB CONTRACTOR'S RESPONSIBILITY TO ENSURE ALL ELECTRICAL SERVICES WORKS ARE INSTALLED IN ACCORDANCE WITH THE REQUIREMENTS OF THE FOLLOWING. REFER ANY DISCREPANCIES BETWEEN THE REQUIREMENTS OF THE FOLLOWING AND/OR THE ELECTRICAL SERVICES DOCUMENTS AND INSTRUCTIONS TO THE ARCHITECT FOR CLARIFICATION PRIOR TO THE PLACING OF ORDERS, FABRICATION OR INSTALLATION OF THE ITEMS/METHODS IN DISCREPANCY.

- NCC BUILDING CODE OF AUSTRALIA.
- ELECTRICITY ACT.
- ELECTRICAL SAFETY ACT.
- AS/NZS3000.
- AS3008.
- AS1670.
- WORKPLACE HEALTH AND SAFETY ACT.
- TELECOMMUNICATIONS ACT.
- ACMA REQUIREMENTS.

4. AUTHORITIES

ENSURE ALL OF THE ELECTRICAL SERVICES COMPLY WITH THE REQUIREMENTS OF ALL REGULATORY AUTHORITIES HAVING JURISDICTION OVER THE SITE INCLUDING BUT NOT LIMITED TO THE FOLLOWING:

- ACMA.
- LOCAL COUNCIL.
- LOCAL SUPPLY AUTHORITY.
- STATE GOVERNMENT DEPARTMENT OF ENVIRONMENT AND HERITAGE.
- QLD GOVERNMENT, DIVISION OF WORKPLACE, HEALTH AND SAFETY.
- QLD FIRE AND RESCUE AUTHORITY.

5. CABLES

UNLESS OTHERWISE SPECIFIED, INSTALL AND TERMINATE CABLES IN ACCORDANCE WITH THE MANUFACTURERS' RECOMMENDATIONS. DETERMINE THE FINAL ROUTES TO SUIT THE BUILDING STRUCTURE AND SITE CONDITIONS. UNLESS NOTED OTHERWISE, PROVIDE ALL 240 VOLT POWER AND LIGHTING WIRING AS 2.5mm² TWIN & EARTH STRANDED COPPER CONDUCTORS, PVC INSULATED 0.6/1kv V75 GRADE TO AS3174, PROTECTED BY A 20 AMP CIRCUIT BREAKER. ALL CONDUIT AND FITTINGS TO BE RIGID UPVC TO AS2053, UNLESS NOTED OTHERWISE.

NOTES

6. POWER DISTRIBUTION

THE POWER DISTRIBUTION COMPONENT OF THIS CONTRACT INCLUDES THE PROVISION OF A NEW DISTRIBUTION BOARD DB-3 TO ACCOMMODATE THE NEW CAFE CIRCUITS. UPGRADE THE EXISTING MSB WITH A NEW 160 AMP THREE PHASE MCCB TO PROTECT A NEW SUBMAIN TO SUPPLY DB-3. THE POWER DISTRIBUTION COMPONENT OF THIS CONTRACT INCLUDES, BUT IS NOT LIMITED TO THE FOLLOWING EXTENT OF WORK:

- POWER DISTRIBUTION.
- EARTHING.
- DB-3.
- MSB UPGRADE INCLUDING THE DB-3 MCCB.
- MSB TO DB-3 SUBMAIN.
- SWITCHGEAR.
- LABELLING AND DB SCHEDULES.
- REMOVAL OF THE EXISTING CAFE LOAD CENTRE.
- REMOVAL OF EXISTING REDUNDANT CIRCUITS.
- CIRCUITS.
- ISOLATORS AND OUTLETS.
- TESTING AND COMMISSIONING.

ENSURE THAT POWER IS MAINTAINED TO THE REMAINING PARTS OF THE BUILDING THAT ARE NOT PART OF THE WORKS BETWEEN 6.00AM AND 11.00PM. ANY INTERRUPTIONS TO THE POWER SUPPLY MUST BE LIMITED TO LESS THAN FOUR HOURS BETWEEN 11.00PM AND 6.00AM AND THE OPERATOR MUST BE PROVIDED WITH TWO WEEKS NOTICE PRIOR TO THE INTERRUPTION.

PROVIDE DISTRIBUTION BOARD DB-3 FOLLOWS:

- WALL MOUNTED.
- IP44 FORM 2bi.
- LIGHT GREY ENCLOSURE WHITE ESCUTCHEON.
- 3 POINT LOCKABLE HANDLES ON ALL DOORS WITH 92268 KEYING.
- LIFT OFF HINGES ON ALL DOORS AND ESCUTCHEONS.
- 1/4 TURN LATCHES AND D HANDLES ON ALL ESCUTCHEONS.
- PROVIDE SHOP DRAWINGS FOR APPROVAL.
- ALL COMPONENTS ARE TO BE LABELLED WITH NON-STICK LABELS.

ENSURE ALL THREE PHASE CIRCUITS ARE PROVIDED WITH CORRECT PHASE ROTATION.

ENSURE ALL OUTLETS AND ISOLATORS ARE POSITIONED SUCH THAT THEY ARE NOT COVERED BY THE EQUIPMENT. THE FINAL POSITION OF ALL OUTLETS AND ISOLATORS ARE TO BE CONFIRMED ON SITE BY THE TENANTS REPRESENTATIVE.

DO NOT USE CORRUGATED CONDUIT UNDER ANY BARS, SERVERIES, OR IN THE KITCHEN.

REFER TO THE DISTRIBUTION BOARD SCHEDULE FOR ADDITIONAL REQUIREMENTS AND CIRCUIT DETAILS.

7. LIGHTING

ALL OF THE LIGHT FITTINGS, LAMPS AND ACCESSORIES ARE TO BE PROVIDED AS PART OF THIS CONTRACT. THE LIGHTING COMPONENT OF THIS CONTRACT INCLUDES, BUT IS NOT LIMITED TO THE FOLLOWING EXTENT OF WORK:

- LIGHTING.
- LIGHT FITTINGS AND ACCESSORIES.
- LAMPS.
- EARTHING OF THE LIGHTING INSTALLATION.
- LIGHTING CONTROL.
- LIGHTING SUBCIRCUITS.
- TESTING AND COMMISSIONING.

8. COMMUNICATIONS CABLING

THE COMMUNICATIONS CABLING COMPONENT OF THIS CONTRACT INCLUDES ADDITIONAL CAT 6 OUTLETS, CABLING AND PATCH PANELS NECESSARY TO FACILITATE THE WORKS.

THE COMMUNICATIONS CABLING COMPONENT OF THIS CONTRACT INCLUDES, BUT IS NOT LIMITED TO THE FOLLOWING EXTENT OF WORK:

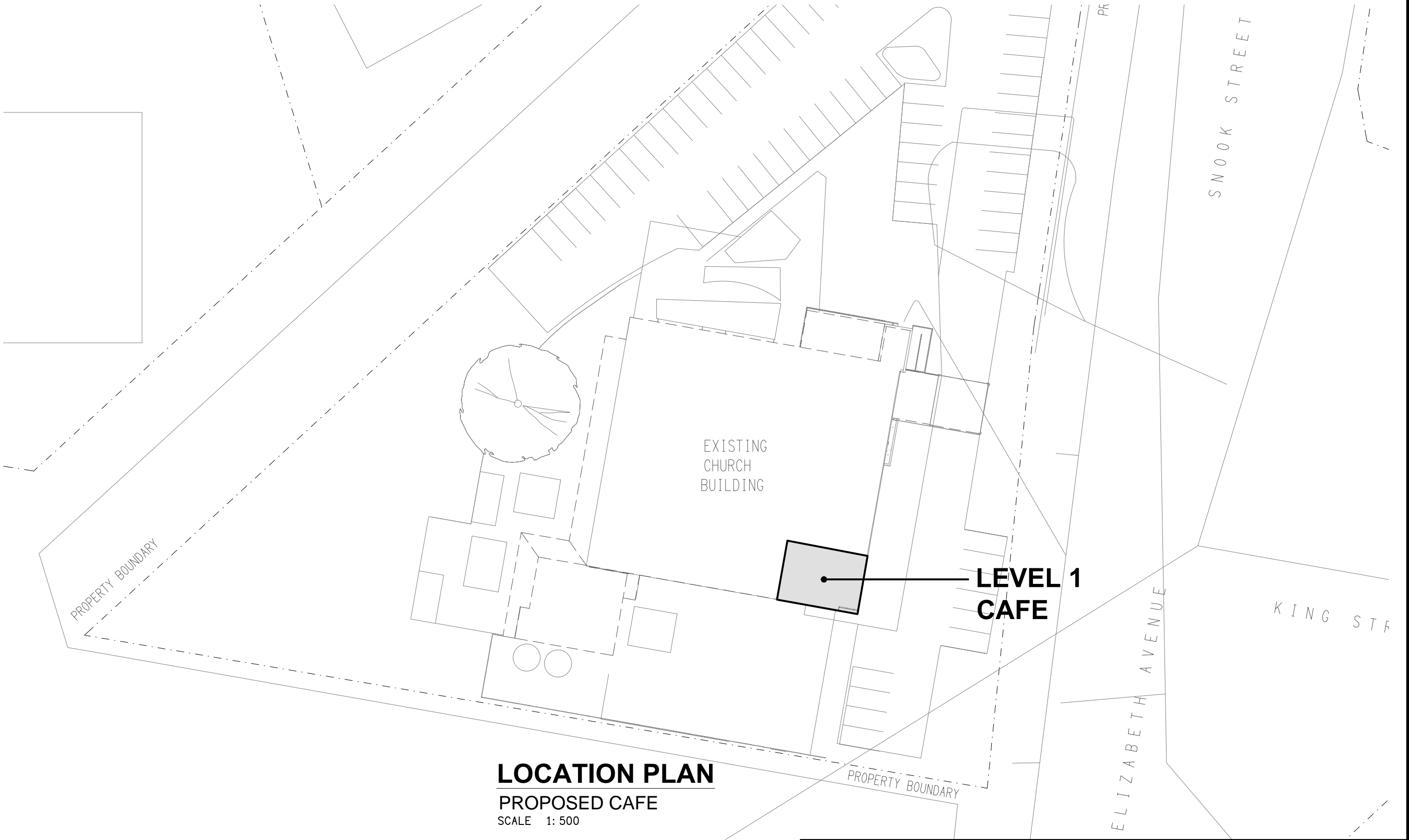
- PATCH PANELS AS NECESSARY.
- CAT 6 COMMUNICATIONS OUTLETS AND CABLING.
- CABLE ACCESS WAYS.
- TESTING AND COMMISSIONING.
- REMOVAL OF ALL EXISTING COMMUNICATIONS CABLING MADE REDUNDANT BY THE WORKS.


9. ABBREVIATIONS

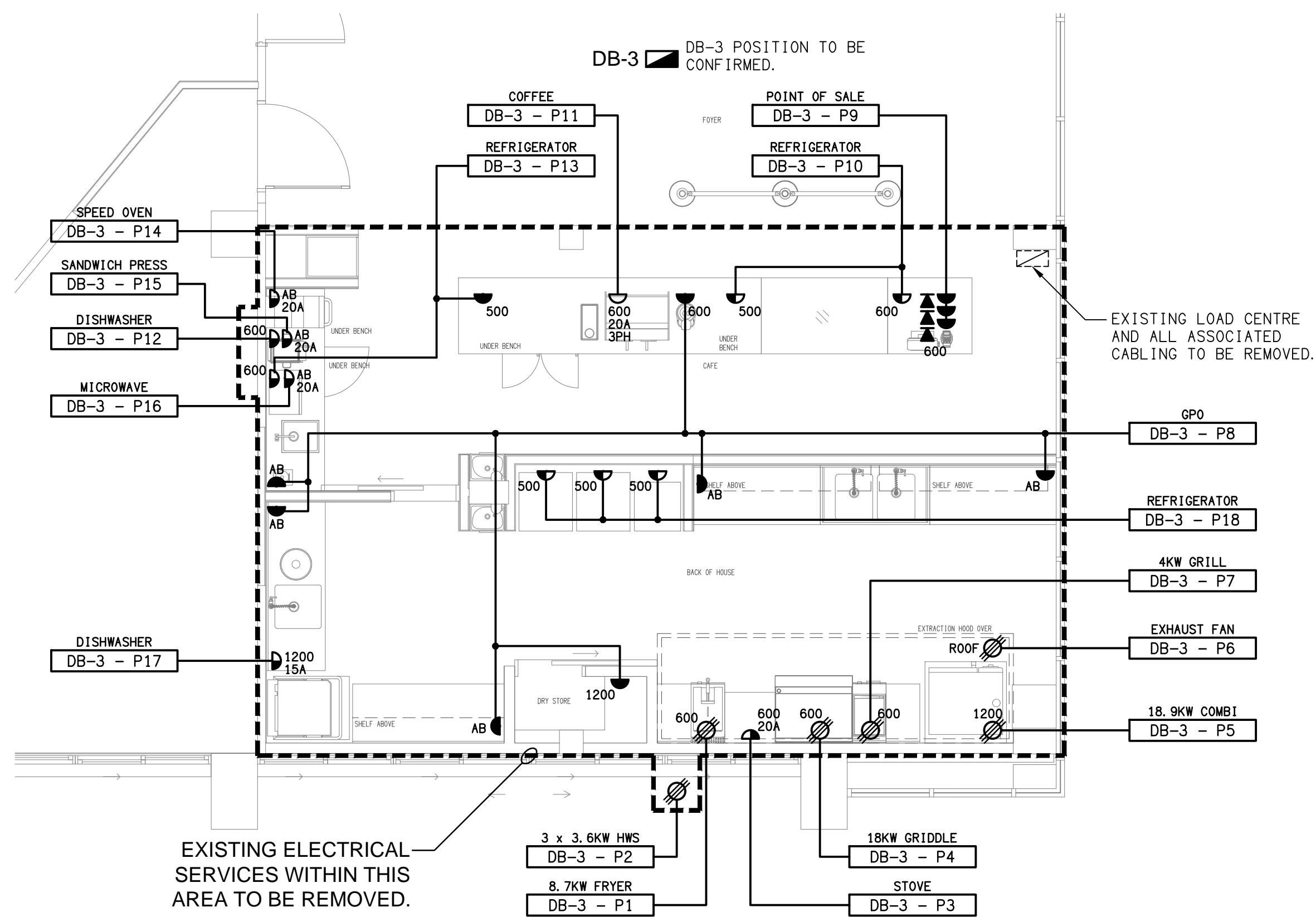
- A - AMP CURRENT RATING
- AB - MOUNT ABOVE BENCH.
- AFFL - ABOVE FINISHED FLOOR LEVEL.
- BB - MOUNT BELOW BENCH.
- BH - MOUNT ON BULKHEAD.
- CEIL - MOUNT ON CEILING.
- CS - MOUNT WITHIN CEILING SPACE.
- C/W - COMPLETE WITH.
- DB - DISTRIBUTION BOARD.
- MCB - MINIATURE CIRCUIT BREAKER.
- MSB - MAIN SWITCHBOARD.
- NTS - NOT TO SCALE.
- RCBO - 30mA RESIDUAL CURRENT DEVICE INTEGRAL TO THE CIRCUIT BREAKER.
- UNO - UNLESS NOTED OTHERWISE.
- WP - WEATHERPROOF TO IP56 UNO.
- 500 - NUMBER DENOTES MOUNTING HEIGHT AFFL.

LEGEND

THE LIGHT FITTING SUPPLIER CONTACT DETAILS MAY BE AVAILABLE ON THE EDG WEBSITE VIA THE FOLLOWING LINK www.edg.net.au/Links/Lighting.htm				
TYPE	LAMPS	DESCRIPTION	COLOUR / ACCESSORY	CATALOGUE No
L1	13W 3000K LED	RECESSED 40DEG DOWNLIGHT C/W REMOTE DRIVER	BLACK	GAMMA ILLUMINATION RHO 1001-3K-13W
L2	40W 4000K LED	1200 X 300 LAY IN FLAT PLATE LED FITTING C/W REMOTE DRIVER MOUNTED IN A FLUSH RECESSED PLASTER BOARD KIT	WHITE TRIM	GAMMA ILLUMINATION PHANTOM 884501
L3	20W 4000K LED	600 X 300 LAY IN FLAT PLATE LED FITTING C/W REMOTE DRIVER MOUNTED IN A FLUSH RECESSED PLASTER BOARD KIT	WHITE TRIM	GAMMA ILLUMINATION PHANTOM 884503
L4	880LM /M 3000K 24V LED	LED STRIP LIGHT IN A STAINLESS STEEL WIRE SUSPENDED 6000 LONG EXTRUSION C/W OPAL DIFFUSER WITH THE SUSPENSION HEIGHT NOMINATED ON SITE BY THE ARCHITECT. PROVIDE THE L4 STRIP WITH A REMOTE POWER SUPPLY LOCATED IN A CONCEALED ACCESSIBLE POSITION NOTED ON THE AS CONSTRUCTED DOCUMENTS.	NATURAL ALUMINIUM	MELEC ML-ALLUSUS-K-V3 - ML-VLCRI-14.4-WW
L5	880LM /M 3000K 24V LED	LED STRIP LIGHT IN A SCREW FIXED EXTRUSION C/W OPAL DIFFUSER MOUNTED UNDER THE OVERHEAD CUPBOARD AGAINST THE SPLASH BACK AS PER THE ARCHITECTURAL DETAIL. PROVIDE THE L5 STRIP WITH A REMOTE POWER SUPPLY LOCATED IN A CONCEALED ACCESSIBLE POSITION NOTED ON THE AS CONSTRUCTED DOCUMENTS. ENSURE THE CABLING ASSOCIATED WITH THE L5 FITTING IS CONCEALED.	NATURAL ALUMINIUM	MELEC ML-ALU-1407-2M - ML-VLCRI-14.4-WW
E1	LED	EMERGENCY LIGHT: RECESSED NON-MAINTAINED EMERGENCY LIGHT: AS2293 CLASSIFICATION C0-D40 - C90-D40.	WHITE	CLEVERTRONICS LLIFE
ONE-WAY LIGHT SWITCH		ONE-WAY LIGHT SWITCH C/W CIRCUIT IDENTIFICATION ON THE FACEPLATE BEHIND THE SURROUND MOUNTED AT 1000mm AFFL UNLESS NOTED OTHERWISE.	WHITE	CLIPSAL C2000 SERIES 30USM
COMMUNICATIONS OUTLET		RJ45 CAT-6 COMMUNICATIONS OUTLET. CABLED BACK TO A NEW PATCH PANEL IN THE EXISTING COMMUNICATIONS CABINET VIA 4-PAIR CAT-6 UTP CABLE. MOUNT UP TO 3 RJ45 OUTLETS PER MULTI-GANG FACEPLATE WITH SEPARATE PERMANENT LABELLING FOR EACH OUTLET. MOUNT AT 300 AFFL U.N.O	WHITE	CLIPSAL C2000 SERIES
INTRUDER DETECTION SENSOR		RELOCATE THE EXISTING INTRUDER DETECTION SENSOR TO ACCOMMODATE THE PROPOSED CAFE LAYOUT CHANGES.		
SINGLE POWER OUTLET		SINGLE POWER OUTLET C/W CIRCUIT IDENTIFICATION ON THE FACEPLATE BEHIND THE SURROUND MOUNT AT 300mm AFFL U.N.O. RATING 10A U.N.O.	WHITE	CLIPSAL C2000 SERIES
DOUBLE POWER OUTLET		DOUBLE POWER OUTLET C/W CIRCUIT IDENTIFICATION ON THE FACEPLATE BEHIND THE SURROUND MOUNT AT 300mm AFFL U.N.O. RATING 10A U.N.O.	WHITE	CLIPSAL C2000 SERIES
SPECIAL PURPOSE OUTLET		SPECIAL PURPOSE OUTLET TYPE AS NOTED. MOUNT AT 1350mm AFFL U.N.O. RATING 20A U.N.O. CONNECT TO EQUIPMENT VIA FLEXIBLE CONDUIT.		
SINGLE-PHASE ISOLATOR		SINGLE-PHASE WEATHERPROOF ISOLATOR. MOUNT AT 1350mm AFFL U.N.O. RATING 20A U.N.O. CONNECT TO EQUIPMENT VIA FLEXIBLE CONDUIT.	-	CLIPSAL WHT20
THREE-PHASE ISOLATOR		THREE-PHASE WEATHERPROOF ISOLATOR. MOUNT AT 1350mm AFFL U.N.O. RATING 20A U.N.O. CONNECT TO EQUIPMENT VIA FLEXIBLE CONDUIT.	-	CLIPSAL WHT35
DB-3		PROVIDE A NEW DISTRIBUTION BOARD DB-3 AND SUPPLY FROM THE MSB AS PER THE SCHEDULE. POWER SCHEMATICS AND THE NOTES. PROVIDE A SHOP DRAWING OF DB-3 FOR APPROVAL. PROVIDE A NEW 160 AMP CIRCUIT BREAKER IN THE MSB TO PROTECT A NEW 4C+E 70MM Cu SUBMAIN TO SUPPLY THE NEW DB-3.		



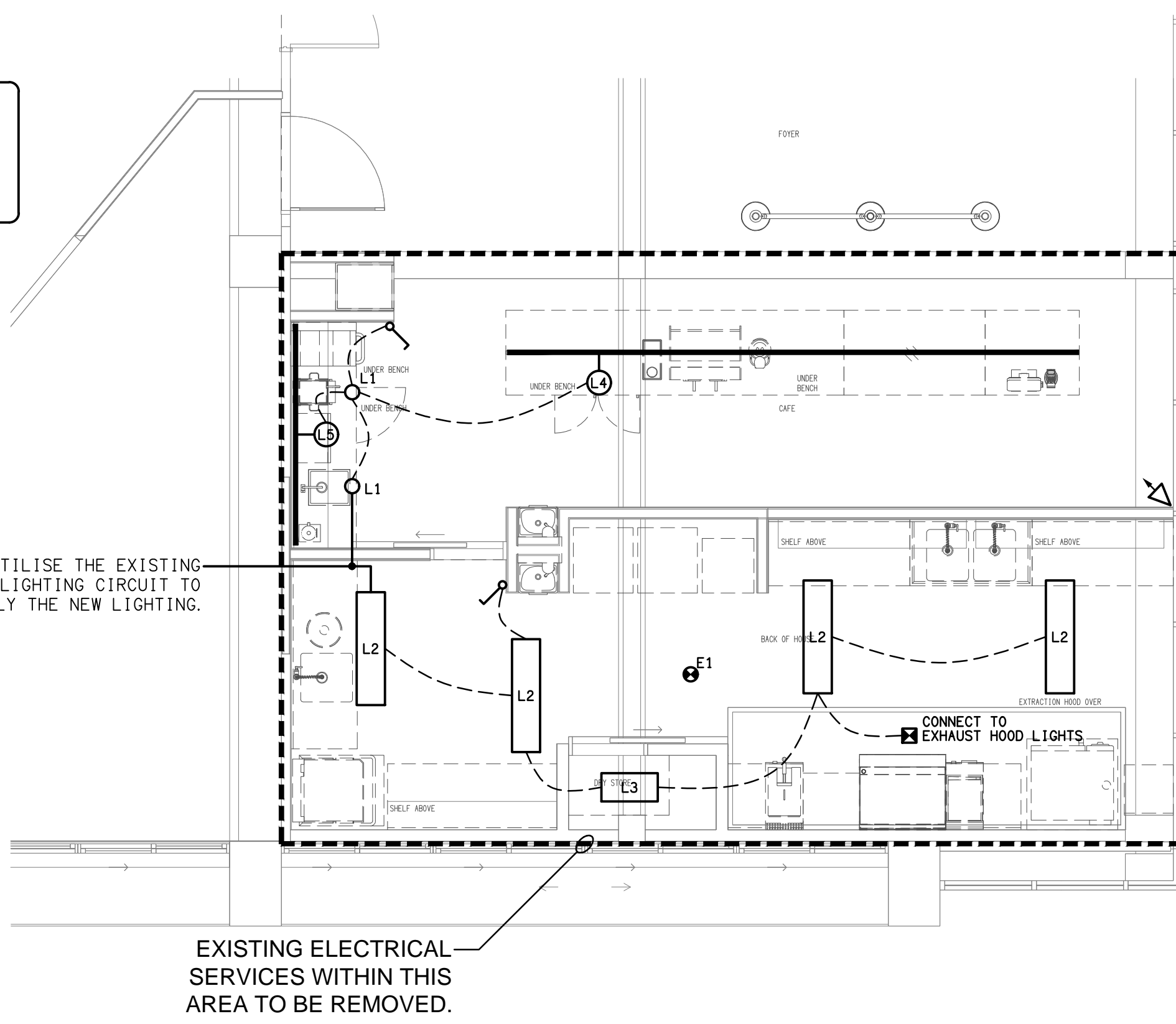
ELECTRICAL DESIGN GROUP BRISBANE PTY LTD ACN 092 710 793 TRADING AS: ELECTRICAL DESIGN GROUP	THE COPYRIGHT OF THIS DRAWING REMAINS THE PROPERTY OF THE ELECTRICAL DESIGN GROUP. USE FIGURED DIMENSIONS IN PREFERENCE TO SCALE. ALL DIMENSIONS TO BE VERIFIED ONSITE.	 ELECTRICAL DESIGN GROUP ELECTRICAL BUILDING SERVICES CONSULTANTS BRISBANE GOLD COAST P.O.Box 15, Sherwood Q.4075 Phone: (07) 3278 4375 Email: brisbane@edg.net.au Web: www.edg.net.au	PROJECT: CITIPOINTE REDCLIFFE CHURCH - CAFE		195 ELIZABETH AVENUE, CLONTARF	
			A PRELIMINARY REV: DESCRIPTION: 04/02/2025 DATE:		DRAWING: ELECTRICAL SERVICES LEGEND, NOTES & LOCATION PLAN SCALE: 1:500 AT A1 PROJECT NO: C3398a DRAWING NO: E01 REVISION: A	



FLOOR PLAN
PROPOSED CAFE
SCALE 1: 50

DB-3 DISTRIBUTION BOARD

FAULT CURRENT:			6KA		MAIN SWITCH:	250A NON AUTO LOAD BREAK
CHASSIS SIZE:			84 POLE		SUPPLIEF FROM:	MSB
CHASSIS RATING:			250A		SUPPLY CABLE:	4C+E 70mm
PHASES:			3			
PROVIDE THE DB WITH A FULL WIDTH EMPTY DIN RAIL TO ACCOMMODATE FUTURE CONTACTORS AND CONTROLS IN ADDITION TO THE CONTROLS.						
CIRC	PH	CIRCUIT	CONTROL	CABLE	LOCATION	CIRCUIT
		BREAKER (amps)	EQUIPMENT	SIZE (mm2)		USE
P1	3	20	RCBO	2.5	KITCHEN	8.7KW FRYER
P2	3	20	RCBO	2.5	EXTERNAL	3X 3.6KW HWS
P3	1	20	RCBO	2.5	KITCHEN	STOVE
P4	3	32	RCBO	6.0	KITCHEN	18KW GRIDDLE
P5	3	32	RCBO	6.0	KITCHEN	18.9KW COMBI
P6	3	20	RCBO	2.5	ROOF	EXHAUST FAN
P7	3	20	RCBO	2.5	KITCHEN	4KW GRILL
P8	1	20	RCBO	2.5	SERVERY / KITCHEN	GPOs
P9	1	20	RCBO	2.5	SERVERY	POINT OF SALE
P10	1	20	RCBO	2.5	SERVERY	REFRIGERATOR
P11	3	20	RCBO	2.5	SERVERY	COFFEE
P12	1	20	RCBO	2.5	SERVERY	DISHWASHER
P13	1	20	RCBO	2.5	SERVERY	REFRIGERATOR
P14	1	20	RCBO	2.5	SERVERY	SPEED OVEN
P15	1	20	RCBO	2.5	SERVERY	SANDWICH PRESS
P16	1	20	RCBO	2.5	SERVERY	MICROWAVE
P17	1	20	RCBO	2.5	KITCHEN	DISHWASHER
P18	1	20	RCBO	2.5	KITCHEN	REFRIGERATOR



REFLECTED CEILING PLAN
PROPOSED CAFE
SCALE 1: 50