



# ELECTRICAL DESIGN GROUP

ELECTRICAL BUILDING SERVICES CONSULTANTS

P.O. Box 15, SHERWOOD Q. 4075

Phone: (07) 3278 4375

Website: www.edg.net.au Email: brisbane@edg.net.au

C3419a - PRINCE OF WALES HOTEL, NUNDAH

C3419a-0001(A).xls

## ELECTRICAL SERVICES CONTRACT DOCUMENT SCHEDULE

REVISION A - 19 FEBRUARY 2025

ISSUING INFORMATION					DATE OF ISSUE									
					DAY	19								
					MONTH	02								
					YEAR	25								
					REASON FOR ISSUE	P								
A = APPROVAL					C = CONSTRUCTION					N = COORDINATION				
										P = PRELIMINARY				
										T = TENDER				

DISTRIBUTION					NUMBER OF COPIES									
WWW.EDG.NET.AU					1E									
CAYAS & WARD ARCHITECTS					1E									
P = PRINT					T = TRACING					D = DISC				
										E = EMAIL				
										F = FAX				

DOCUMENTS	TITLE	REVISION												
C3419a-E01.dwg	LEGEND & DETAILS	A												
C3419a-E02.dwg	NOTES	A												
C3419a-E03.dwg	FLOOR PLAN	A												
C3419a-E04.dwg	GAMING ROOM & AMENITIES FLOOR PLAN	A												
C3419a-E05.dwg	REFLECTED CEILING PLAN	A												
C3419a-E06.dwg	JOINERY LIGHTING PLANS	A												
C3419a-0001.xls	CONTRACT DOCUMENT SCHEDULE	A												
C3419a-0002.xls	EQUIPMENT SCHEDULE	A												
C3419a-0004.xls	LIGHTING CONTROL SCHEDULE													
C3419a-0005.xls	DISTRIBUTION BOARD DB-A SCHEDULE													
C3419a-0006.xls	DISTRIBUTION BOARD DB-B SCHEDULE													
C3419a-0001.zip	FITTING & OUTLET DATASHEETS													



# ELECTRICAL DESIGN GROUP

ELECTRICAL BUILDING SERVICES CONSULTANTS

P.O. Box 15, SHERWOOD Q. 4075

Phone: (07) 3278 4375 Fax: (07) 3716 0222

Web Site: [www.edg.net.au](http://www.edg.net.au) Email: [brisbane@edg.net.au](mailto:brisbane@edg.net.au)

C3419a - PRINCE OF WALES HOTEL, NUNDAH

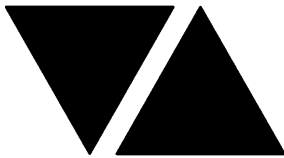
C3419a-0002(A).xls

## ELECTRICAL EQUIPMENT SCHEDULE

REVISION A - 19 FEBRUARY 2025

THE LIGHT FITTING SUPPLIER CONTACT DETAILS MAY BE AVAILABLE ON THE EDG WEBSITE VIA THE FOLLOWING LINK  
[www.edg.net.au/Links/Lighting.htm](http://www.edg.net.au/Links/Lighting.htm)

TYPE	LAMPS	DESCRIPTION	COLOUR / ACCESSORY	CATALOGUE No	REV
L1	13W 3000K LED	RECESSED ADJUSTABLE DOWNLIGHT C/W REMOTE DALI DIMMABLE DRIVER	WHITE TRIM	EQUAL TO GAMMA ILLUMINATION MYLO 1004-FL-3K-13W	A
L2	22W 3000K LED	REPLACE THE EXISTING RECESSED DOWNLIGHT WITH A NEW RECESSED ADJUSTABLE DOWNLIGHT C/W REMOTE DALI DIMMABLE DRIVER	WHITE TRIM	EQUAL TO GAMMA ILLUMINATION ZYLO 1003-VWFL-3K-22W	A
L3	22W 3000K LED	RECESSED ADJUSTABLE DOWNLIGHT C/W REMOTE DALI DIMMABLE DRIVER	WHITE TRIM	EQUAL TO GAMMA ILLUMINATION ZYLO 1003-VWFL-3K-22W	A
L4	EXISTING RECESSED DOWNLIGHT LIGHT TO REMAIN AND BE RECIRCUITS / SWITCHED AS INDICATED				A
L5	13W 3000K LED	SURFACE MOUNTED DOWNLIGHT C/W INTEGRAL DALI DIMMABLE DRIVER	WHITE TRIM	EQUAL TO GAMMA ILLUMINATION SOLO 1412-3K-13W	A
L6	13W 3000K LED	RECESSED ADJUSTABLE DOWNLIGHT C/W REMOTE DALI DIMMABLE DRIVER	WHITE TRIM	EQUAL TO GAMMA ILLUMINATION SCOOP MINI 1495-FL-3K-13W	A
L7	8W 3000K LED	RECESSED DOWNLIGHT C/W REMOTE DALI DIMMABLE DRIVER	WHITE TRIM	EQUAL TO GAMMA ILLUMINATION CIBA 1218-FL-3K-8W	A
L8	EXISTING LIGHT TO REMAIN AND BE RECIRCUITS / SWITCHED AS INDICATED				A
L9	40W 4000K LED	600 x 600 LAY IN FLAT PLATE LED FITTING C/W REMOTE DRIVER MOUNTED IN A FLUSH RECESSED PLASTER BOARD KIT	WHITE TRIM	GAMMA ILLUMINATION PHANTOM 884502	A
PD01	TRAILING EDGE DIMMABLE G125 240 VOLT 2700K E27 FILAMENT LED 800 LUMENS +/- 10% 40,000 HOUR LIFE	DECORATIVE PENDANT ALLOW TO ASSEMBLE AND INSTALL CONFIRM THE SUSPENSION HEIGHT ONSITE WITH THE ARCHITECT	TO BE CONFIRMED	TO BE CONFIRMED	A
PD02	TRAILING EDGE DIMMABLE G125 240 VOLT 2700K E27 FILAMENT LED 800 LUMENS +/- 10% 40,000 HOUR LIFE	DECORATIVE PENDANT ALLOW TO ASSEMBLE AND INSTALL CONFIRM THE SUSPENSION HEIGHT ONSITE WITH THE ARCHITECT	TO BE CONFIRMED	TO BE CONFIRMED	A
PD03	TRAILING EDGE DIMMABLE G125 240 VOLT 2700K E27 FILAMENT LED 800 LUMENS +/- 10% 40,000 HOUR LIFE	DECORATIVE PENDANT ALLOW TO ASSEMBLE AND INSTALL CONFIRM THE SUSPENSION HEIGHT ONSITE WITH THE ARCHITECT	TO BE CONFIRMED	TO BE CONFIRMED	A



# ELECTRICAL DESIGN GROUP

ELECTRICAL BUILDING SERVICES CONSULTANTS

P.O. Box 15, SHERWOOD Q. 4075

Phone: (07) 3278 4375 Fax: (07) 3716 0222

Web Site: [www.edg.net.au](http://www.edg.net.au) Email: [brisbane@edg.net.au](mailto:brisbane@edg.net.au)

C3419a - PRINCE OF WALES HOTEL, NUNDAH

C3419a-0002(A).xls

## ELECTRICAL EQUIPMENT SCHEDULE

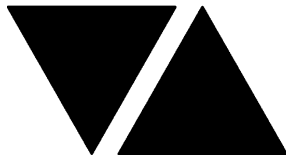
REVISION A - 19 FEBRUARY 2025

THE LIGHT FITTING SUPPLIER CONTACT DETAILS MAY BE AVAILABLE ON THE EDG WEBSITE VIA THE FOLLOWING LINK  
[www.edg.net.au/Links/Lighting.htm](http://www.edg.net.au/Links/Lighting.htm)

TYPE	LAMPS	DESCRIPTION	COLOUR / ACCESSORY	CATALOGUE No	REV
PD04	TRAILING EDGE DIMMABLE G125 240 VOLT 2700K E27 FILAMENT LED 800 LUMENS +/- 10% 40,000 HOUR LIFE	DECORATIVE PENDANT ALLOW TO ASSEMBLE AND INSTALL CONFIRM THE SUSPENSION HEIGHT ONSITE WITH THE ARCHITECT	TO BE CONFIRMED	TO BE CONFIRMED	A
WL01	TRAILING EDGE DIMMABLE ST64 PEAR 240 VOLT 2700K E27 FILAMENT LED 400 LUMENS +/- 10% 40,000 HOUR LIFE	WALL LIGHT MOUNTED LIGHT AS PER THE ARCHITECTURAL ELEVATION	TO BE CONFIRMED	TO BE CONFIRMED	A
WL02	TRAILING EDGE DIMMABLE ST64 PEAR 240 VOLT 2700K E27 FILAMENT LED 400 LUMENS +/- 10% 40,000 HOUR LIFE	WALL LIGHT MOUNTED LIGHT AS PER THE ARCHITECTURAL ELEVATION	TO BE CONFIRMED	TO BE CONFIRMED	A
S1	12W/M 2700K LED	FLEXIBLE LED ROPE FLEX SCREW FIXED RECESSED INTO THE COUNTER PELMET AS PER THE ARCHITECTURAL DETAIL. PROVIDE THE S1 STRIP WITH REMOTE DALI DIMMABLE POWER SUPPLIES AS REQUIRED LOCATE THE POWER SUPPLIES IN A CONCEALED ACCESSIBLE POSITION NOTED ON THE AS CONSTRUCTED DOCUMENTS.	WHITE	NPA L-NF-GLOW- VWW + POWER SUPPLY & DALI CONTROLLER	A
S2	880LM /M 3000K 24V LED	LED STRIP LIGHT IN A SCREW FIXED EXTRUSION C/W OPAL DIFFUSER MOUNTED IN THE REAR BAR JOINERY AS PER THE ARCHITECTURAL DETAIL. PROVIDE EACH GROUP OF S2 STRIP WITH REMOTE DALI DIMMABLE POWER SUPPLIES AS REQUIRED LOCATE THE POWER SUPPLIES IN A CONCEALED ACCESSIBLE POSITION NOTED ON THE AS CONSTRUCTED DOCUMENTS.	NATURAL	MELEC ML-ALU-1407- 2M - ML-VLCRI-14.4- WW	A
S3	880LM /M 3000K 24V LED	LED STRIP LIGHT IN A SCREW FIXED EXTRUSION C/W OPAL DIFFUSER MOUNTED IN THE GAMING CEILING PELMET AS PER THE ARCHITECTURAL DETAIL. PROVIDE EACH GROUP OF S3 STRIP WITH REMOTE DALI DIMMABLE POWER SUPPLIES AS REQUIRED LOCATE THE POWER SUPPLIES IN A CONCEALED ACCESSIBLE POSITION NOTED ON THE AS CONSTRUCTED DOCUMENTS.	NATURAL	MELEC ML-ALU-1407- 2M - ML-VLCRI-14.4- WW	A
S4	880LM /M 3000K 24V LED	LED STRIP LIGHT IN A SCREW FIXED EXTRUSION C/W OPAL DIFFUSER MOUNTED HARD AGAINST THE SPLASH BACK UNDER THE OVERHEAD CUPBOARDS AS PER THE ARCHITECTURAL DETAIL. PROVIDE THE S4 WITH A REMOTE POWER SUPPLY LOCATED IN A CONCEALED ACCESSIBLE POSITION NOTED ON THE AS CONSTRUCTED DOCUMENTS.	NATURAL	MELEC ML-ALU-1407- 2M - ML-VLCRI-14.4- WW	A
BL01		TREE BUD LIGHTS. DETAILS TO BE CONFIRMED			A

C3419a-0002(A).xls

Pages inc. any attach. 2 of 5



# ELECTRICAL DESIGN GROUP

ELECTRICAL BUILDING SERVICES CONSULTANTS

P.O. Box 15, SHERWOOD Q. 4075

Phone: (07) 3278 4375 Fax: (07) 3716 0222

Web Site: [www.edg.net.au](http://www.edg.net.au) Email: [brisbane@edg.net.au](mailto:brisbane@edg.net.au)

C3419a - PRINCE OF WALES HOTEL, NUNDAH

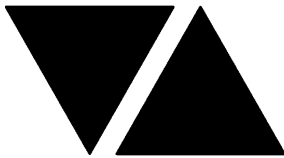
C3419a-0002(A).xls

## ELECTRICAL EQUIPMENT SCHEDULE

REVISION A - 19 FEBRUARY 2025

THE LIGHT FITTING SUPPLIER CONTACT DETAILS MAY BE AVAILABLE ON THE EDG WEBSITE VIA THE FOLLOWING LINK  
[www.edg.net.au/Links/Lighting.htm](http://www.edg.net.au/Links/Lighting.htm)

TYPE	LAMPS	DESCRIPTION	COLOUR / ACCESSORY	CATALOGUE No	REV
E1	LED	EMERGENCY LIGHT: RECESSED NON-MAINTAINED EMERGENCY LIGHT. AS2293 CLASSIFICATION C0-D63 - C90-D63.	WHITE	CLEVERTRONICS LLIFE	A
EX	LED	EXIT LIGHT: MAINTAINED 24M VIEWING DISTANCE EXIT LIGHT C/W DIFFUSERS & DIRECTIONAL ARROWS AS SHOWN. CEILING SURFACE MOUNT OR WALL MOUNT BETWEEN 2100mm & 2700mm AFFL IF THERE IS NO VERTICAL SURFACE TO MOUNT THE FITTING ON WITHIN THIS RANGE CONFIRM THE MOUNTING HEIGHT WITH THE ENGINEER. AS2293 CLASSIFICATION C0-D1.25- C90-D2	WHITE	CLEVERTRONICS LUBPRO-SM	A
F01	CEILING FAN	CEILING FAN C/W CUSTOM MOUNTING TO SUIT THE BUILDING STRUCTURE / CEILING. PROVIDE EACH F01 WITH A DEDICATED WIRED CONTROLLER			A
FAN CONTROLLER TYPE 1 (FC1)		DINING FAN CONTROLS			A
HEATER TYPE 1 (HR01)		WALL MOUNTED HEATER			A
CHANNEL x		CONTROL CHANNEL WITH A NUMERICAL REFERENCE. REFER TO THE POWER AND LIGHTING CONTROL SCHEMATIC / SCHEDULE			A
ONE-WAY LIGHT SWITCH		ONE-WAY LIGHT SWITCH C/W CIRCUIT IDENTIFICATION ON THE FACEPLATE BEHIND THE SURROUND MOUNTED AT 1000mm AFFL UNLESS NOTED OTHERWISE.	WHITE	CLIPSAL C2000 SERIES 30USM	A
TWO-WAY LIGHT SWITCH		TWO-WAY LIGHT SWITCH C/W CIRCUIT IDENTIFICATION ON THE FACEPLATE BEHIND THE SURROUND MOUNTED AT 1000mm AFFL UNLESS NOTED OTHERWISE.	WHITE	CLIPSAL C2000 SERIES 30USM	A
LIGHTING CONTROL SWITCH PANEL (SPx)		6-BUTTON PROGRAMMABLE SWITCH PANEL C/W CENTRAL LCD DISPLAY MOUNTED AT 1000mm AFFL UNLESS NOTED OTHERWISE.	ALUMINIUM	DYNALITE ANTUMBRA DISPLAY	A
HAND DRYER CONNECTION (HD)		EXISTING HAND DRYER POWER SUPPLIED TO BE RETAINED WITH THE CIRCUITS RESUPPLIED AS NOTED ON THE SWITCHBOARD ZONE DRAWING			A
SINGLE POWER OUTLET		SINGLE POWER OUTLET C/W CIRCUIT IDENTIFICATION ON THE FACEPLATE BEHIND THE SURROUND MOUNT AT 300mm AFFL U.N.O. RATING 10A U.N.O.	WHITE UNLESS NOTED AS BLACK (BK)	CLIPSAL C2000 SERIES	A



# ELECTRICAL DESIGN GROUP

ELECTRICAL BUILDING SERVICES CONSULTANTS

P.O. Box 15, SHERWOOD Q. 4075

Phone: (07) 3278 4375 Fax: (07) 3716 0222

Web Site: [www.edg.net.au](http://www.edg.net.au) Email: [brisbane@edg.net.au](mailto:brisbane@edg.net.au)

C3419a - PRINCE OF WALES HOTEL, NUNDAH

C3419a-0002(A).xls

## ELECTRICAL EQUIPMENT SCHEDULE

REVISION A - 19 FEBRUARY 2025

THE LIGHT FITTING SUPPLIER CONTACT DETAILS MAY BE AVAILABLE ON THE EDG WEBSITE VIA THE FOLLOWING LINK  
[www.edg.net.au/Links/Lighting.htm](http://www.edg.net.au/Links/Lighting.htm)

TYPE	LAMPS	DESCRIPTION	COLOUR / ACCESSORY	CATALOGUE No	REV
SINGLE POWER OUTLET AUTO DOOR (AD)		SINGLE POWER OUTLET C/W CIRCUIT IDENTIFICATION ON THE FACEPLATE BEHIND THE SURROUND MOUNTED CONCEALED WITHIN THE AUTO DOOR MULLION. RATING 10A U.N.O.	WHITE	CLIPSAL C2000 SERIES	A
DOUBLE POWER OUTLET		DOUBLE POWER OUTLET C/W CIRCUIT IDENTIFICATION ON THE FACEPLATE BEHIND THE SURROUND MOUNT AT 300mm AFFL U.N.O. RATING 10A U.N.O.	WHITE UNLESS NOTED AS BLACK (BK)	CLIPSAL C2000 SERIES	A
SPECIAL PURPOSE OUTLET		SPECIAL PURPOSE OUTLET TYPE AS NOTED. MOUNT AT 1350mm AFFL U.N.O. RATING 20A U.N.O. CONNECT TO EQUIPMENT VIA FLEXIBLE CONDUIT.			A
SIGN CONNECTION		COORDINATE THE LOCATION AND CONNECTION WITH THE SIGN CONTRACTOR ENSURING THE GPO / ISOLATORS ARE PROVIDED WITH APPROPRIATE WEATHER PROTECTION AND ARE CONCEALED FROM VIEW.			A
SINGLE-PHASE ISOLATOR		SINGLE-PHASE WEATHERPROOF ISOLATOR. MOUNT AT 1350mm AFFL U.N.O. RATING 20A U.N.O. CONNECT TO EQUIPMENT VIA FLEXIBLE CONDUIT.	-	CLIPSAL WHT20	A
THREE-PHASE ISOLATOR		THREE-PHASE WEATHERPROOF ISOLATOR. MOUNT AT 1350mm AFFL U.N.O. RATING 20A U.N.O. CONNECT TO EQUIPMENT VIA FLEXIBLE CONDUIT.	-	CLIPSAL WHT35	A
GAMING ROOM JUNCTION BOX		PROVIDE A SQUARE PLASTIC JUNCTION BOX CHASED INTO THE SLAB WITH THE TOP FLUSH WITH THE FLOOR. THE GAMING POWER CONDUITS ARE TO RUN TO A POWER JUNCTION BOX AND THE GAMING COMMUNICATIONS CONDUITS ARE TO RUN TO A COMMUNICATIONS JUNCTION BOX. LOCATE THE JUNCTION BOXES UNDER THE GAMING MACHINES.			A
COMMUNICATIONS RACK CR-A		COMMUNICATIONS RACK CR-A BY OTHERS			A
DB-A		DISTRIBUTION BOARD DB-A AS PER THE DB-A SCHEDULE AND NOTES. PROVIDE A SHOP DRAWING OF DB-A FOR APPROVAL. PROVIDE A REMOVABLE FLANGED COLOUR BOND HAT SECTION THE SAME WIDTH AND DEPTH AS THE DB FROM THE FLOOR TO THE UNDERSIDE OF THE DB AND FROM THE TOP OF THE DB TO THE CEILING. PROVIDE DB-A WITH A 4C+E16MM SUBMAIN FROM DB-1 PROTECTED BY A THREE PHASE 63 AMP MCB.			A
DB-B		DISTRIBUTION BOARD DB-B AS PER THE DB-A SCHEDULE AND NOTES. PROVIDE A SHOP DRAWING OF DB-A FOR APPROVAL. PROVIDE A REMOVABLE FLANGED COLOUR BOND HAT SECTION THE SAME WIDTH AND DEPTH AS THE DB FROM THE FLOOR TO THE UNDERSIDE OF THE DB AND FROM THE TOP OF THE DB TO THE CEILING. PROVIDE DB-B WITH A 4C+E16MM SUBMAIN FROM DB-2 PROTECTED BY A THREE PHASE 63 AMP MCB.			A
DB-K		EXISTING DISTRIBUTION BOARD TO REMAIN AS IS.			A
DB-G		REMOVE THE EXISTING DB-G AND RECONNECT ALL REMAINING CIRCUITS TO DB-1 OR DB-2 WITH NEW SWITCHGEAR AND CONTROLS MATCHING THE EXISTING IN CAPACITY AND FUNCTION.			A
DB-R		REMOVE THE EXISTING DB-R AND RECONNECT ALL REMAINING CIRCUITS TO DB-1 OR DB-2 WITH NEW SWITCHGEAR AND CONTROLS MATCHING THE EXISTING IN CAPACITY AND FUNCTION.			A

C3419a-0002(A).xls

Pages inc. any attach. 4 of 5



# ELECTRICAL DESIGN GROUP

ELECTRICAL BUILDING SERVICES CONSULTANTS

P.O. Box 15, SHERWOOD Q. 4075

Phone: (07) 3278 4375 Fax: (07) 3716 0222

Web Site: [www.edg.net.au](http://www.edg.net.au) Email: [brisbane@edg.net.au](mailto:brisbane@edg.net.au)

C3419a - PRINCE OF WALES HOTEL, NUNDAH

C3419a-0002(A).xls

## ELECTRICAL EQUIPMENT SCHEDULE

REVISION A - 19 FEBRUARY 2025

THE LIGHT FITTING SUPPLIER CONTACT DETAILS MAY BE AVAILABLE ON THE EDG WEBSITE VIA THE FOLLOWING LINK  
[www.edg.net.au/Links/Lighting.htm](http://www.edg.net.au/Links/Lighting.htm)

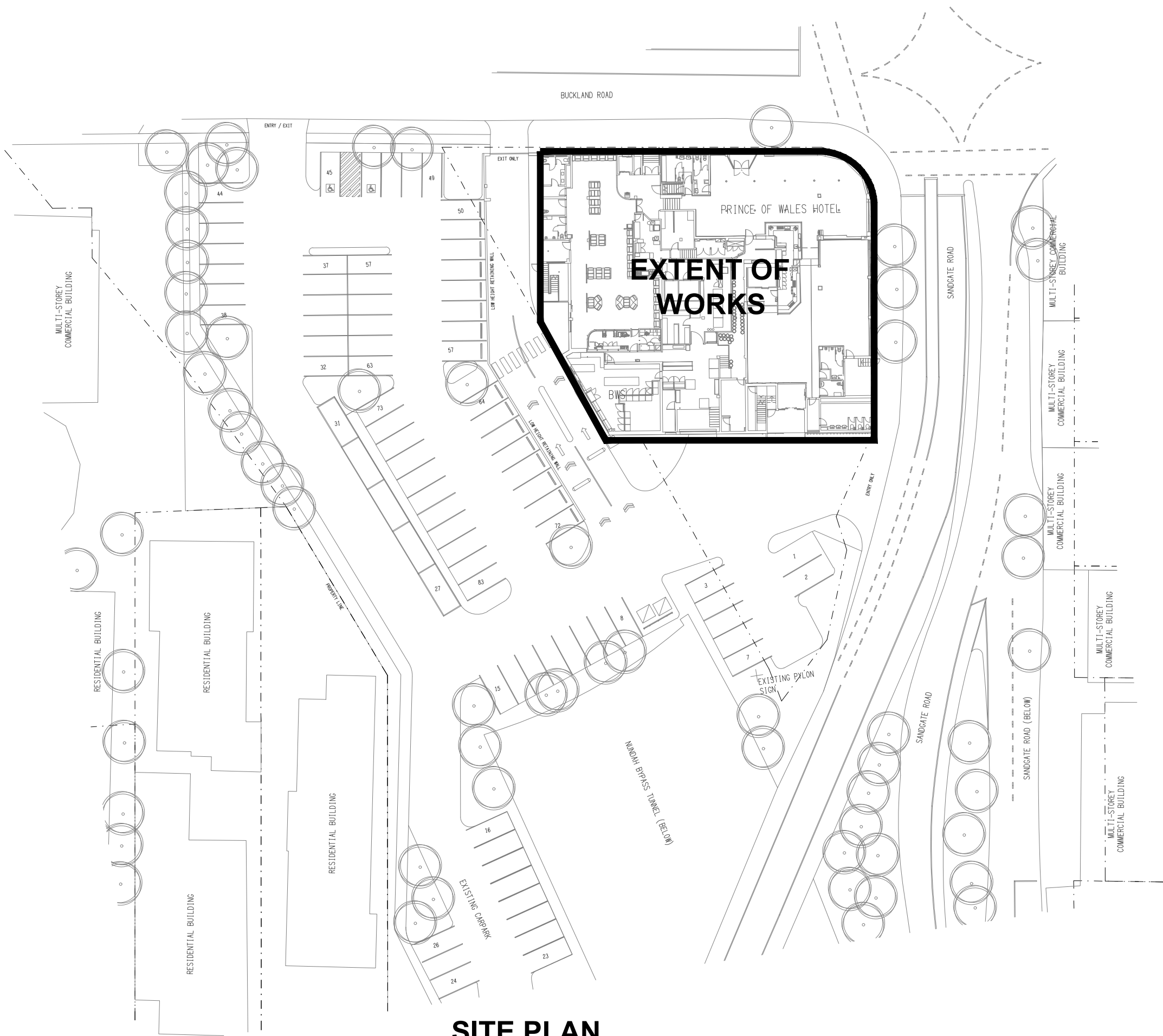
TYPE	LAMPS	DESCRIPTION	COLOUR / ACCESSORY	CATALOGUE No	REV
DB-T		REMOVE THE EXISTING DB-T AND RECONNECT ALL REMAINING CIRCUITS TO DB-1 OR DB-2 WITH NEW SWITCHGEAR AND CONTROLS MATCHING THE EXISTING IN CAPACITY AND FUNCTION.			A
DB-1		EXISTING DISTRIBUTION BOARD TO REMAIN REMOVE ALL EXISTING CIRCUITS AND ASSOCIATED CABLING THAT BECOMES REDUNDANT DUE TO THE PROPOSED WORKS. UPDATE THE EXISTING LABELLING AND SCHEDULE AT PRACTICAL COMPLETION SUCH THAT EACH CIRCUIT USE AND LOCATION CAN BE QUICKLY AND SIMPLY IDENTIFIED.			A
DB-2		EXISTING DISTRIBUTION BOARD TO REMAIN REMOVE ALL EXISTING CIRCUITS AND ASSOCIATED CABLING THAT BECOMES REDUNDANT DUE TO THE PROPOSED WORKS. UPDATE THE EXISTING LABELLING AND SCHEDULE AT PRACTICAL COMPLETION SUCH THAT EACH CIRCUIT USE AND LOCATION CAN BE QUICKLY AND SIMPLY IDENTIFIED.			A
DB-1A		EXISTING DISTRIBUTION BOARD TO REMAIN REMOVE ALL EXISTING CIRCUITS AND ASSOCIATED CABLING THAT BECOMES REDUNDANT DUE TO THE PROPOSED WORKS. UPDATE THE EXISTING LABELLING AND SCHEDULE AT PRACTICAL COMPLETION SUCH THAT EACH CIRCUIT USE AND LOCATION CAN BE QUICKLY AND SIMPLY IDENTIFIED.			A
MSB		EXISTING MAIN SWITCHBOARD TO REMAIN AS IS.			A
MP		EXISTING ELECTRICITY RETAIL METER PANEL TO REMAIN AS IS			A
DB-1 -P1		PROVIDE CIRCUIT DB-1 -P1 AS A THREE PHASE 40 AMP MCB PROTECTED 4C+E 6MM CIRCUIT SUPPLIED FROM DISTRIBUTION BOARD DB-1			A
DB-1 -P2		PROVIDE CIRCUIT DB-1 -P2 AS A THREE PHASE 40 AMP MCB PROTECTED 4C+E 6MM CIRCUIT SUPPLIED FROM DISTRIBUTION BOARD DB-1			A
DB-1 -P3		PROVIDE CIRCUIT DB-1 -P3 AS A SINGLE PHASE 20 AMP RCBO PROTECTED 2C+E 2.5MM CIRCUIT SUPPLIED FROM DISTRIBUTION BOARD DB-1			A
FIRE INDICATOR PANEL (FIP)		REPLACE THE EXISTING FIP WITH A CURRENT VERSION OF THE AS1670.1 COMPLIANT WHITE FIRE INDICATOR PANEL.			A
SMOKE DETECTOR		AS1670.1 SURFACE MOUNTED SMOKE DETECTOR			A
RECESSED FIRE ALARM SPEAKER		AS1670.1 RECESSED FIRE ALARM SPEAKER C/W WHITE GRILL			A
THERMAL DETECTOR		SURFACE MOUNTED THERMAL DETECTOR TO AS1670.1.			A
FIRE ALARM SYSTEM INTERFACE		FIRE ALARM FAILSAFE INTERFACE TO UNLOCK THE DOOR UPON A FIRE ALARM			A

LEGEND

- ELECTRICAL SERVICES SWITCHBOARD.
- SWITCHBOARD / CONTROL PANEL NOT PROVIDED AS PART OF THE ELECTRICAL SUBCONTRACT.
- SINGLE POWER OUTLET.
- DOUBLE POWER OUTLET.
- SPECIAL PURPOSE POWER OUTLET.
- EXISTING POWER OUTLET TO REMAIN AS NOTED.
- SIGNAGE CONNECTION.
- SINGLE PHASE ISOLATOR.
- THREE PHASE ISOLATOR.
- GAMING JUNCTION BOX.
- CONDUIT ROUTE.
- EXISTING HAND DRYER CONNECTION.
- FAN CONTROL, TYPE x.
- LIGHTING CONTROL SWITCHPANEL, TYPE x.
- ONE-WAY LIGHT SWITCH.
- TWO-WAY LIGHT SWITCH.
- CIRCUIT LINE.
- SWITCH LINE.
- POWER CIRCUIT DESIGNATION.  
DENOTES DB AND CIRCUIT.
- LIGHTING CONTROL CHANNEL REFERENCE.
- ELECTRICAL EQUIPMENT AS NOTED.
- REFER TO DETAIL NOTED FOR THE AREA SHOWN HATCHED.  
ADDITIONAL OUTLETS & FITTINGS MAY BE SHOWN ON DETAIL.
- FIRE INDICATOR PANEL.
- SMOKE DETECTOR.
- RECESSED FIRE ALARM SPEAKER.
- THERMAL DETECTOR.
- FIRE ALARM DOOR SYSTEM INTERFACE.
- F01: CEILING FAN
- HR01: WALL MOUNTED HEATER.
- Sx: LED STRIP LIGHT, TYPE AS NOTED.
- E1: GENERAL RECESSED LED EMERGENCY LIGHT, WHITE.
- EX: EMERGENCY LED EXIT LIGHT, WHITE UNLESS NOTED AS BLACK.
- BL01: TREE BUD LIGHTS.
- L1: RECESSED ADJUSTABLE DOWNLIGHT, DIMMABLE.
- L2: EXISTING DOWNLIGHT REPLACED BY NEW RECESSED ADJUSTABLE DOWNLIGHT, DIMMABLE.
- L3: RECESSED ADJUSTABLE DOWNLIGHT, DIMMABLE.
- L4: EXISTING RECESSED DOWNLIGHT TO REMAIN.

LEGEND

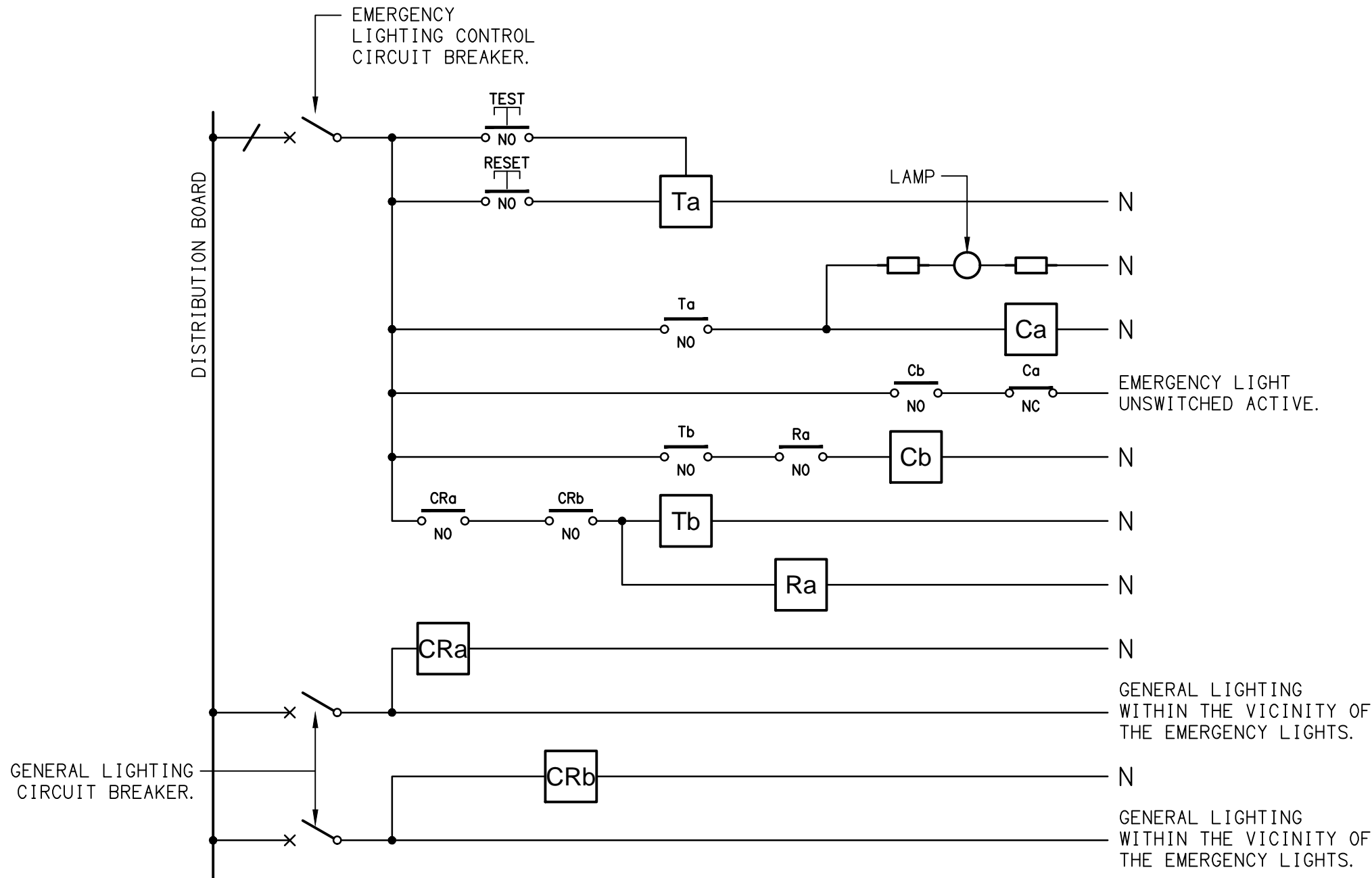
- L5: SURFACE MOUNTED DOWNLIGHT, DIMMABLE.
- L6: RECESSED ADJUSTABLE DOWNLIGHT, DIMMABLE.
- L7: RECESSED DOWNLIGHT, DIMMABLE.
- L8: EXISTING LIGHT TO REMAIN.
- L9: 600 x 600 FLAT PLATE RECESSED PLASTER BOARD FITTING.
- PD01: SUSPENDED DECORATIVE SUSPENDED PENDANT, DIMMABLE.
- PD02: SUSPENDED DECORATIVE SUSPENDED PENDANT, DIMMABLE.
- PD03: SUSPENDED DECORATIVE SUSPENDED PENDANT, DIMMABLE.
- PD04: SUSPENDED DECORATIVE SUSPENDED PENDANT, DIMMABLE.
- WL01: WALL LIGHT, DIMMABLE.
- WL02: WALL LIGHT, DIMMABLE.



SITE PLAN  
EXTENT OF WORKS  
SCALE 1: 500

EQUIPMENT:

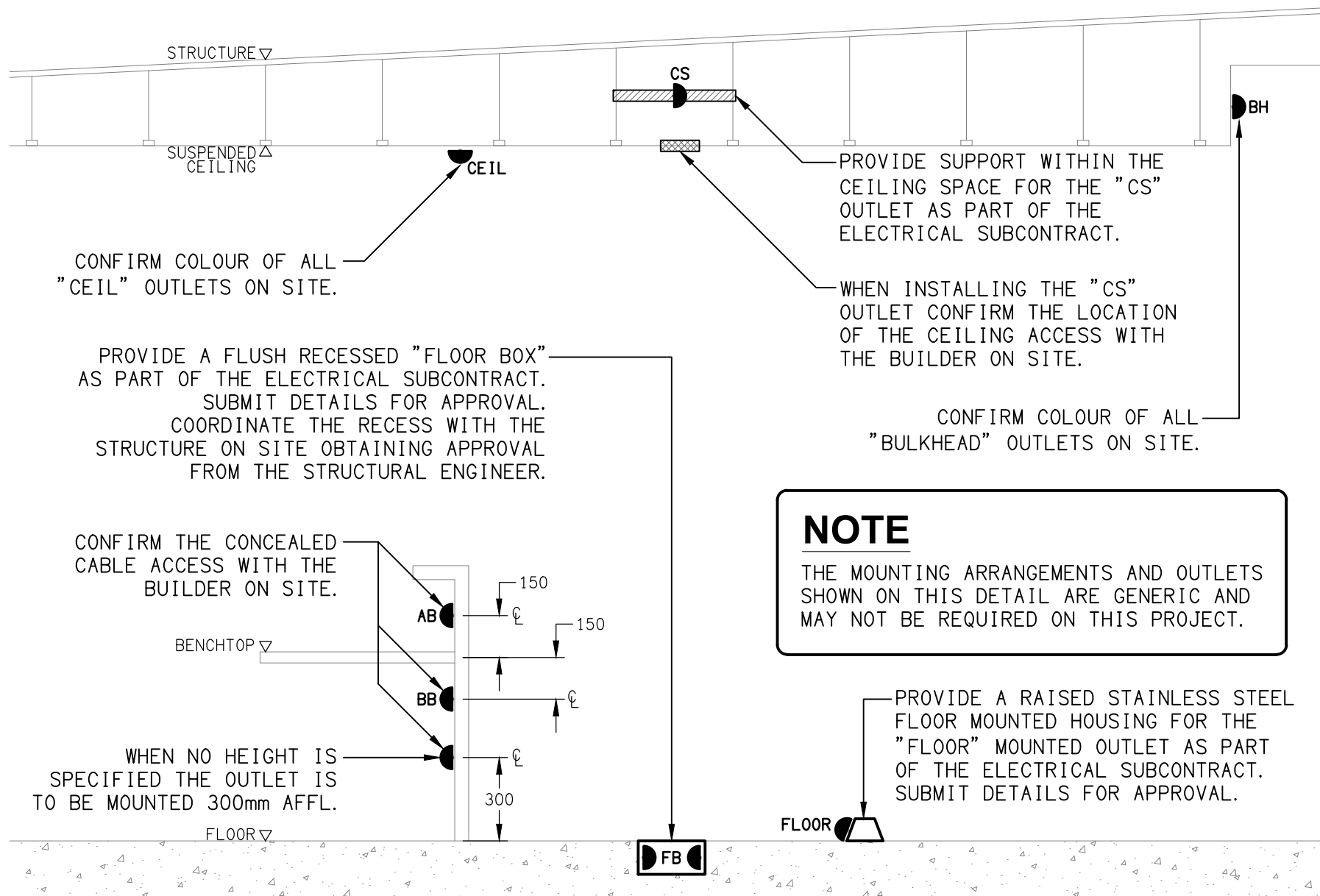
- TEST – TEST PUSH BUTTON MOUNTED ON THE DISTRIBUTION BOARD ESCUTCHEON.
- RESET – RESET PUSH BUTTON MOUNTED ON THE DISTRIBUTION BOARD ESCUTCHEON.
- LAMP – AMBER TEST INDICATING LAMP MOUNTED ON THE DISTRIBUTION BOARD ESCUTCHEON.
- Ta – ADJUSTABLE 0-3 HOUR TIMED RELAY.
- Tb – 15 MINUTE RUN-ON TIMER TO OPERATE UPON THE RETURN OF MAINS POWER.
- Cx – CONTACTOR x.
- CRx – CONTROL RELAY x.
- Rx – RELAY x.



NOTES

1. THE EMERGENCY LIGHT UNSWITCHED ACTIVE / GENERAL LIGHTING SWITCHED ACTIVE CIRCUIT ARRANGEMENT AND CONTROL IS TYPICAL FOR ALL CIRCUITS SUPPLYING EMERGENCY LIGHTS.
2. PROVIDE ADDITIONAL CONTROL RELAYS (CRx) CONFIGURED AS PER CRa AND CRb FOR ALL ADDITIONAL LIGHTING CIRCUITS THAT SUPPLY LIGHTS IN THE VICINITY OF THE EMERGENCY LIGHTS.

SCHEMATIC  
EMERGENCY LIGHTING  
NOT TO SCALE



DETAIL  
TYPICAL OUTLET MOUNTINGS  
NOT TO SCALE



NOTES

1. EXTENT OF WORKS

THE ELECTRICAL SERVICES SUB-CONTRACT INCLUDES BUT IS NOT LIMITED TO THE FOLLOWING:

- SUPPLY AND INSTALLATION OF ALL COMPONENTS FORMING PART OF THE ELECTRICAL SERVICES.
- INSPECTIONS.
- TESTING AND COMMISSIONING.
- MAINTENANCE.
- CABLING, CABLE SUPPORT SYSTEMS AND ACCESS.
- POWER DISTRIBUTION.
- LIGHTING.
- FIRE ALARM SYSTEM.
- GAMING POWER AND COMMUNICATIONS CONDUITS CHASED INTO THE EXISTING SLAB.
- MODIFICATION, RELOCATION AND EXTENSION AS NECESSARY OF ALL EXISTING SERVICES THAT ARE IMPACTED BY THE WORKS OR REQUIRED TO BE EXTENDED BY THE WORKS.
- REMOVAL OF ALL EXISTING SERVICES MADE REDUNDANT BY THE WORKS.
- AS CONSTRUCTED DOCUMENTS.
- ANY TEMPORARY WORKS REQUIRED TO KEEP THE HOTEL OPERATING DURING THE CONSTRUCTION PROCESS.
- ALL MINOR COMPONENTS AND INCIDENTAL WORKS NOT SPECIFICALLY REFERRED TO, HOWEVER NECESSARY TO COMPLETE THE ELECTRICAL SERVICES INSTALLATION SUCH THAT IT IS HANDED OVER COMPLETE, OPERATIONAL AND FIT FOR THE INTENDED USE.

UNDERTAKE THE WORKS IN STAGES REFLECTING THE MAIN CONTRACT.

PRIOR TO COMMENCING WORK CONSULT SITE MANAGEMENT FOR ANY HAZARDOUS MATERIAL AND OR ASBESTOS REGISTERS AS WELL AS UNDERTAKE A THOROUGH INSPECTION OF THE SITE TO IDENTIFY ANY POTENTIAL HAZARDOUS MATERIALS, ASBESTOS AND HEALTH OR SAFETY RISKS. ADVISE THE CONTRACTOR OF ANY POTENTIAL HAZARDOUS MATERIALS, ASBESTOS AND HEALTH OR SAFETY RISKS IF IDENTIFIED AND DO NOT COMMENCE WORK UNTIL AN APPROPRIATE MANAGEMENT PLAN HAS BEEN DEVELOPED AND AGREED TO BY ALL PARTIES.

SUPPLY ALL LABOUR, MATERIALS, EQUIPMENT, AND ALL OTHER ITEMS, WHETHER MENTIONED IN DETAIL OR NOT, REQUIRED FOR THE SATISFACTORY COMPLETION OF THE ELECTRICAL SERVICES INSTALLATION, LEAVING IN FULL WORKING ORDER TO THE SATISFACTION OF THE PROJECT MANAGER.

ACCEPT FULL RESPONSIBILITY FOR LIASING, ARRANGING AND CO-ORDINATION OF ALL WORKS THAT HAVE AN EFFECT ON OR WILL BE AFFECTED BY THE ELECTRICAL SERVICES.

REFER TO THE EQUIPMENT SCHEDULE FOR ADDITIONAL REQUIREMENTS.

2. WORKMANSHIP

ENSURE THAT THE ELECTRICAL WORK IS PERFORMED BY THE HOLDER OF A CURRENT ELECTRICAL SUB CONTRACTOR LICENSE AND THE SERVICES COVERED BY THE ACMA IS PERFORMED BY THE HOLDER OF THE APPROPRIATE CURRENT ACMA LICENSE. ENSURE THE INSTALLATION AND ALL COMPONENTS, FIXTURES, FITTINGS, OUTLETS AND CABLES ARE SUPPLIED AND INSTALLED TO A HIGH STANDARD THROUGHOUT, AND INSTALLED IN A NEAT AND TRADESMAN LIKE MANNER, TO THE CURRENT INDUSTRY STANDARDS. ENSURE ALL MATERIALS AND COMPONENTS OF A SIMILAR TYPE ARE OF THE SAME MANUFACTURER AND INSTALLED IN A UNIFORM MANNER.

IT IS THE ELECTRICAL SUB CONTRACTOR'S RESPONSIBILITY TO ENSURE THAT THE INSTALLATION IS FIT FOR PURPOSE AND IS PROVIDED AS A COMPLETE WORKING INSTALLATION. IT IS THE ELECTRICAL SUB CONTRACTOR'S RESPONSIBILITY TO PROVIDE ALL COMPONENTS, FITTINGS, FIXTURES, SYSTEMS, PROGRAMMING ETC IRRESPECTIVE OF THE LEVEL DETAILED IN THE DOCUMENTS SUCH THAT THE INSTALLATION IS PROVIDED AS A COMPLETE WORKING INSTALLATION.

CONCEAL ALL WIRING AND CONDUITS. EXPOSED CABLING OR CONDUITS ARE GENERALLY NOT ACCEPTABLE. IT IS NOTED THAT CHASING AND REINSTATEMENT WILL BE REQUIRED. ENSURE ALL COMPONENTS, EQUIPMENT AND MATERIALS SUPPLIED ARE NEW, UNUSED, DESIGNED AND SELECTED TO ENSURE SATISFACTORY OPERATION UNDER VARYING ATMOSPHERIC, CLIMATIC, HUMID TROPICAL CONDITIONS WITHOUT DISTORTION AND DETERIORATION IN ANY PART AFFECTING EFFICIENCY AND RELIABILITY OF THE SYSTEMS. DESIGN AND SELECT ALL EQUIPMENT TO PROVIDE THE NECESSARY SAFETY TO HUMAN LIFE AND PROPERTY DURING OPERATION AND MAINTENANCE WITH PARTICULAR ATTENTION GIVEN TO ELECTRICAL SAFETY AND SEGREGATION PRECAUTIONS.

CHECK THE FINISHED FINISHWORK AROUND THE AREA OF EACH INSTALLATION AND TOUCH UP ALL DAMAGED PARTS AND FINISHES AFTER THE INSTALLATION OF THE ELECTRICAL SERVICES.

ALL WORKS ARE TO BE CARRIED OUT IN ACCORDANCE WITH THE BUILDER'S PROGRAM. ENSURE ALL FINAL LOCATIONS OF OUTLETS AND FITTINGS ARE CO-ORDINATED ONSITE WITH THE ARCHITECT AND ALL OTHER SERVICES, TO THE APPROVAL OF THE PROJECT MANAGER. ALLOW TO CO-ORDINATE THE FINAL LOCATION OF ALL EQUIPMENT, FITTINGS, & OUTLETS, SUCH THAT THEY ARE INSTALLED IN ACCORDANCE WITH THE AS3000 RESTRICTED ZONES, AND ARE NOT COVERED INAPPROPRIATELY.

ENSURE THAT ALL METAL SURFACES ARE SUITABLY PROTECTED AGAINST CORROSION, AND THAT ALL PLASTIC MATERIALS ARE UV STABILISED.

PROVIDE ALL MATERIALS AS NEW, AND OF THE HIGHEST CLASS AVAILABLE FOR THEIR RESPECTIVE TYPES. ENSURE ALL ASPECTS OF THE WORK ARE OF A HIGH STANDARD THROUGHOUT, AND INSTALLED IN A NEAT AND TRADESMAN LIKE MANNER, TO THE CURRENT INDUSTRY STANDARDS.

3. STANDARDS

IRRESPECTIVE OF INFORMATION CONTAINED IN THE ELECTRICAL SERVICES DOCUMENTS OR IN INSTRUCTIONS, IT IS THE ELECTRICAL SUB CONTRACTOR'S RESPONSIBILITY TO ENSURE ALL ELECTRICAL SERVICES WORKS ARE INSTALLED IN ACCORDANCE WITH THE REQUIREMENTS OF THE FOLLOWING. REFER ANY DISCREPANCIES BETWEEN THE REQUIREMENTS OF THE FOLLOWING AND/OR THE ELECTRICAL SERVICES DOCUMENTS AND INSTRUCTIONS TO THE ARCHITECT FOR CLARIFICATION PRIOR TO THE PLACING OF ORDERS, FABRICATION OR INSTALLATION OF THE ITEMS/METHODS IN DISCREPANCY.

- NCC BUILDING CODE OF AUSTRALIA.
- ELECTRICITY ACT.
- ELECTRICAL SAFETY ACT.
- AS/NZS3000.
- AS3008.
- AS1670.1.
- WORKPLACE HEALTH AND SAFETY ACT.
- TELECOMMUNICATIONS ACT.
- ACMA REQUIREMENTS.

4. AUTHORITIES

ENSURE ALL OF THE ELECTRICAL SERVICES COMPLY WITH THE REQUIREMENTS OF ALL REGULATORY AUTHORITIES HAVING JURISDICTION OVER THE SITE INCLUDING BUT NOT LIMITED TO THE FOLLOWING:

- ACMA.
- LOCAL COUNCIL.
- LOCAL SUPPLY AUTHORITY.
- STATE GOVERNMENT DEPARTMENT OF ENVIRONMENT AND HERITAGE.
- QLD GOVERNMENT, DIVISION OF WORKPLACE, HEALTH AND SAFETY.
- QLD FIRE AND EMERGENCY SERVICES.

NOTES

5. CABLES

UNLESS OTHERWISE SPECIFIED, INSTALL AND TERMINATE CABLES IN ACCORDANCE WITH THE MANUFACTURERS' RECOMMENDATIONS. DETERMINE THE FINAL ROUTES TO SUIT THE BUILDING STRUCTURE AND SITE CONDITIONS. UNLESS NOTED OTHERWISE, PROVIDE ALL 240 VOLT POWER AND LIGHTING WIRING AS 2.5mm² TWIN & EARTH STRANDED COPPER CONDUCTORS, PVC INSULATED 0.6/1kV V75 GRADE TO AS3174, PROTECTED BY A 20 AMP CIRCUIT BREAKER. ALL CONDUIT AND FITTINGS TO BE RIGID UPVC TO AS2053, UNLESS NOTED OTHERWISE.

6. POWER DISTRIBUTION

THE POWER DISTRIBUTION COMPONENT OF THIS CONTRACT INCLUDES

- PROVIDING A NEW DISTRIBUTION BOARD DB-A. (GAMING)
- PROVIDING A NEW DISTRIBUTION BOARD DB-B. (DINING / SPORTS BAR)
- REMOVING THE EXISTING DISTRIBUTION BOARD DB-G. - REMOVING THE EXISTING DISTRIBUTION BOARD DB-R.
- REMOVING THE EXISTING DISTRIBUTION BOARD DB-T

ALL OF THE EXISTING SWITCHBOARDS, CIRCUITS, CABLING AND OUTLETS THAT BECOME REDUNDANT ARE TO BE REMOVED. THE EXISTING CIRCUITS THAT REMAIN WITHIN THE AREA OF WORKS ARE TO BE RECONNECTED TO THE SWITCHBOARDS WITH NEW SWITCHGEAR AND CONTROLS. ANY INTERRUPTION TO THE POWER SUPPLY TO ANY SERVICES OUTSIDE OF THE AREA OF WORKS MUST BE RESTRICTED TO OUTSIDE OF THE HOTELS OPERATING HOURS AND MUST BE ADVISED TO THE OPERATOR IN WRITING AT LEAST ONE WEEK PRIOR.

THE POWER DISTRIBUTION COMPONENT OF THIS CONTRACT INCLUDES, BUT IS NOT LIMITED TO THE FOLLOWING EXTENT OF WORK:

- POWER DISTRIBUTION.
- NEW SWITCHBOARDS, SUBMAINS AND CIRCUIT BREAKERS.
- CABLE ACCESS WAYS.
- CIRCUITS.
- ISOLATORS AND OUTLETS.
- TESTING AND COMMISSIONING.
- REMOVAL OF ALL EXISTING REDUNDANT SERVICES.
- RECONNECTION OF ALL EXISTING SERVICES THAT REMAIN.

REFER TO THE DISTRIBUTION BOARD SCHEDULES FOR ADDITIONAL REQUIREMENTS AND CIRCUIT DETAILS.

PROVIDE DISTRIBUTION BOARDS DB-A AND DB-B AS FOLLOWS:

- WALL MOUNTED.
- EACH CUBICAL IS TO HAVE A MINIMUM WIDTH OF 700MM.
- IP44 FORM 1.
- LIGHT GREY ENCLOSURE WHITE ESCUTCHEON.
- 3 POINT LOCKABLE HANDLES ON ALL DOORS.
- LIFT OFF HINGES ON ALL DOORS AND ESCUTCHEONS.
- 1/4 TURN LATCHES AND D HANDLES ON ALL ESCUTCHEONS.
- ALL SWITCHGEAR TO BE SCHNEIDER OR NHP/ TERASAKI.
- PROVIDE SHOP DRAWINGS FOR APPROVAL.
- 25% SPARE POLES AT PRACTICAL COMPLETION.
- ALL COMPONENTS ARE TO BE LABELLED WITH NON-STICK LABELS.

ENSURE ALL THREE PHASE CIRCUITS ARE PROVIDED WITH CORRECT PHASE ROTATION.

ENSURE ALL OUTLETS AND ISOLATORS ARE POSITIONED SUCH THAT THEY ARE NOT COVERED BY THE EQUIPMENT. THE FINAL POSITION OF ALL OUTLETS AND ISOLATORS ARE TO BE CONFIRMED ON SITE BY THE TENANTS REPRESENTATIVE.

7. LIGHTING

ALL OF THE LIGHT FITTINGS, LAMPS AND ACCESSORIES ARE TO BE PROVIDED AS PART OF THIS CONTRACT. THE LIGHTING COMPONENT OF THIS CONTRACT INCLUDES, BUT IS NOT LIMITED TO THE FOLLOWING EXTENT OF WORK:

- LIGHTING.
- CEILING FANS.
- HEATERS.
- LIGHT FITTINGS AND ACCESSORIES.
- EMERGENCY AND EXIT LIGHTING.
- EARTHING OF THE LIGHTING INSTALLATION.
- LIGHTING CONTROL.
- PHILIPS DYNALITE LIGHTING CONTROL SYSTEM.
- LIGHTING SUBCIRCUITS.
- TESTING AND COMMISSIONING.
- RECONNECTION OF THE EXISTING LIGHTING THAT REMAINS.
- REMOVAL OF ALL EXISTING REDUNDANT LIGHTING SERVICES INCLUDING THE REDUNDANT LIGHTING CONTROL SYSTEM.

COMMISSION THE LIGHTING CONTROL AT PRACTICAL COMPLETION AND AGAIN THREE TIMES DURING THE DEFECTS AND LIABILITY PERIOD TO THE SATISFACTION OF THE OPERATOR.

DALI TO PHASE DIMMING CONVERTERS ARE NOT ACCEPTABLE.

NOTES

8. EMERGENCY AND EXIT LIGHTING

PROVIDE A SINGLE POINT EMERGENCY LIGHTING SYSTEM THAT COMPLIES WITH THE LATEST ISSUE OF ALL PARTS AS2293 AND THE RELEVANT PARTS OF THE NCC BCA. INSTALL EMERGENCY LIGHT FITTINGS NOMINATED AS MAINTAINED WITH THE LAMP PERMANENTLY ON SUPPLIED VIA AN UNSWITCHED ACTIVE MAINS SUPPLY WHEN THE MAINS SUPPLY IS AVAILABLE. WHEN THE MAINS SUPPLY IS NOT AVAILABLE, THE LAMP IS TO REMAIN ON SUPPLIED BY THE EMERGENCY PACK. SINGLE LAMP MAINTAINED EMERGENCY LIGHTS ARE NOT SWITCHED WITH THE LOCAL GENERAL AREA LIGHTING. (THE LAMP IS ALWAYS ON.)

INSTALL EMERGENCY LIGHT FITTINGS NOMINATED AS NON-MAINTAINED AS FOLLOWS:

- IF THE FITTING IS NOT BEING SWITCHED, THE LAMP IS TO REMAIN OFF WHEN THE MAINS SUPPLY IS AVAILABLE. WHEN THE MAINS SUPPLY IS NOT AVAILABLE THE LAMP IS TO BE SWITCHED ON SUPPLIED BY THE EMERGENCY PACK. UNSWITCHED SINGLE LAMP NON-MAINTAINED EMERGENCY LIGHTS ARE NOT SWITCHED WITH THE LOCAL GENERAL AREA LIGHTING. (THE LAMP IS ON ONLY WHEN THE MAINS SUPPLY IS NOT AVAILABLE.)
- IF THE FITTING IS BEING SWITCHED, THE LAMP IS TO BE SUPPLIED AND CONTROLLED WITH THE LOCAL GENERAL AREA LIGHTING WHEN THE MAINS SUPPLY IS AVAILABLE. WHEN THE MAINS SUPPLY IS NOT AVAILABLE THE LAMP IS TO BE SWITCHED ON, SUPPLIED BY THE EMERGENCY PACK. (THE LAMP IS ON WHEN TURNED ON WITH THE LOCAL GENERAL LIGHTING OR THE MAIN SUPPLY IS NOT AVAILABLE.)

INSTALL EMERGENCY LIGHTS SUCH THAT THE STATUS INDICATOR L.E.D. IS CLEARLY VISIBLE AND THE TEST BUTTONS ARE READILY ACCESSIBLE. LABEL EACH CIRCUIT BREAKER WHICH CONTROLS THE UNSWITCHED ACTIVE TO EXIT LIGHTS WITH A LABEL FIXED ADJACENT; ENGRAVED PLASTIC LAMINATE, GREEN BACKGROUND WITH WHITE CHARACTERS: -

WARNING  
INTERRUPTING SUPPLY WILL DISCHARGE  
EMERGENCY LIGHTING BATTERIES

PROVIDE WRITTEN EVIDENCE OF THE INITIAL COMMISSIONING AND TESTING AND TESTING FOR THE DURATION OF THE MAINTENANCE PERIOD IN ACCORDANCE WITH AS 2293.2.

THIS EVIDENCE IS TO BE IN THE FORM OF A LOG BOOK SIMILAR TO THE GENERAL LIGHTING SERVICE PTY LTD "EMERGENCY LIGHTING MAINTENANCE LOG BOOK AND MANUAL" WHICH IS TO BE PROVIDED BY THE ELECTRICAL SUB-CONTRACTOR AND HAVE ALL ENTRIES FULLY COMPLETED AND BE PRESENTED FOR INSPECTION AT PRACTICAL COMPLETION. THE LOG BOOK IS TO BE RETAINED BY THE ELECTRICAL SUB-CONTRACTOR FOR THE DURATION OF THE MAINTENANCE PERIOD, AND THE SIX MONTHLY TEST AND MAINTENANCE RESULTS ENTERED. THE LOG BOOK IS TO BE PRESENTED FOR APPROVAL AT FINAL COMPLETION (EXPIRY OF THE MAINTENANCE PERIOD) AND WILL BE FORWARDED TO THE OPERATOR FOR THEIR USE.

PROVIDE MAINTENANCE OF THE EMERGENCY AND EXIT LIGHTING INSTALLATION INCLUDING RECORDS IN ACCORDANCE WITH THE LATEST ISSUE OF ALL PARTS AS2293 AND THE RELEVANT PARTS OF THE NCC BCA. PROVIDE THE EMERGENCY LIGHTING SYSTEM WITH A SUPPLY SENSING AND TESTING FACILITY IN ACCORDANCE WITH AS 2293.1.

9. FIRE ALARM SYSTEM.

THE FIRE ALARM SYSTEM COMPONENT OF THIS CONTRACT INCLUDES THE REPLACEMENT OF THE ENTIRE EXISTING FIRE ALARM SYSTEM THROUGHOUT THE RENOVATED AREAS INCLUDES REPLACING THE EXISTING FIP WITH A NEW LOCAL ALARM ONLY AMPAC FIRE FINDER PLUS FIRE INDICATOR PANEL. THE EXISTING DETECTION AND SPEAKERS OUTSIDE OF THE RENOVATED AREAS ARE TO BE RECONNECTED AND REPLACED WITH NEW IF THEY ARE NOT COMPATIBLE WITH THE NEW FIRE ALARM SYSTEM. THE NEW FIRE ALARM SYSTEM IS TO BE PROVIDED AS AN AS1670.1 COMPLIANT ADDRESSABLE SYSTEM. THE FIRE ALARM SYSTEM COMPONENT OF THIS CONTRACT INCLUDES, BUT IS NOT LIMITED TO THE FOLLOWING EXTENT OF WORK:

- REPLACING THE FIRE INDICATOR PANEL INCORPORATING AN FDCIE AND EWCIE.
- HORNS AND SPEAKERS.
- VISUAL ALARM DEVICE IF THE EXISTING IS DAMAGED OR NOT COMPATIBLE WITH THE NEW SYSTEM.
- LIFT SHAFT ASPIRATING SMOKE DETECTION.
- SMOKE DETECTORS.
- THERMAL DETECTORS.
- CONCEALED SPACE DETECTORS.
- CONCEALED SPACE DETECTOR ACCESS.
- REPLACE THE EXISTING DETECTORS AND SPEAKERS IF THE EXISTING IS DAMAGED OR NOT COMPATIBLE WITH THE NEW SYSTEM.
- WALL MOUNTED ENGRAVED ZONE PLAN ADJACENT THE FIP.
- CABLING.
- INTERFACE TO THE KITCHEN GAS CONTROL SYSTEMS.
- INTERFACE TO THE SECURITY SYSTEM.
- INTERFACE TO THE AUDIO SYSTEM.
- CABLE ACCESS WAYS.
- TESTING AND COMMISSIONING.

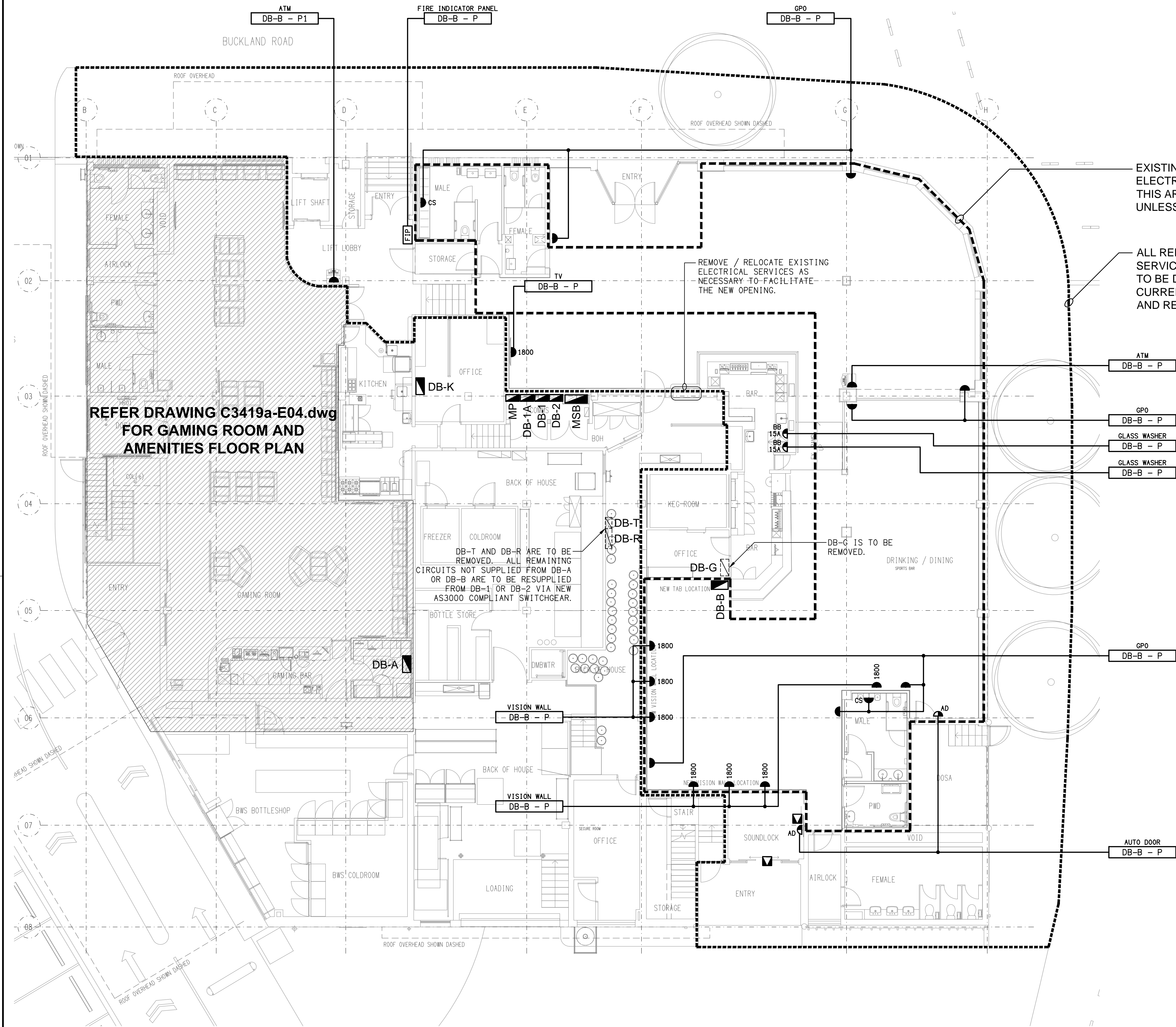
ANY INTERRUPTION TO THE EXISTING FIRE ALARM SYSTEM MUST BE RESTRICTED BETWEEN 9.00AM AND 4.00PM MONDAY TO FRIDAY AND MUST BE ADVISED TO THE OPERATOR IN WRITING AT LEAST ONE WEEK PRIOR.

10. ABBREVIATIONS

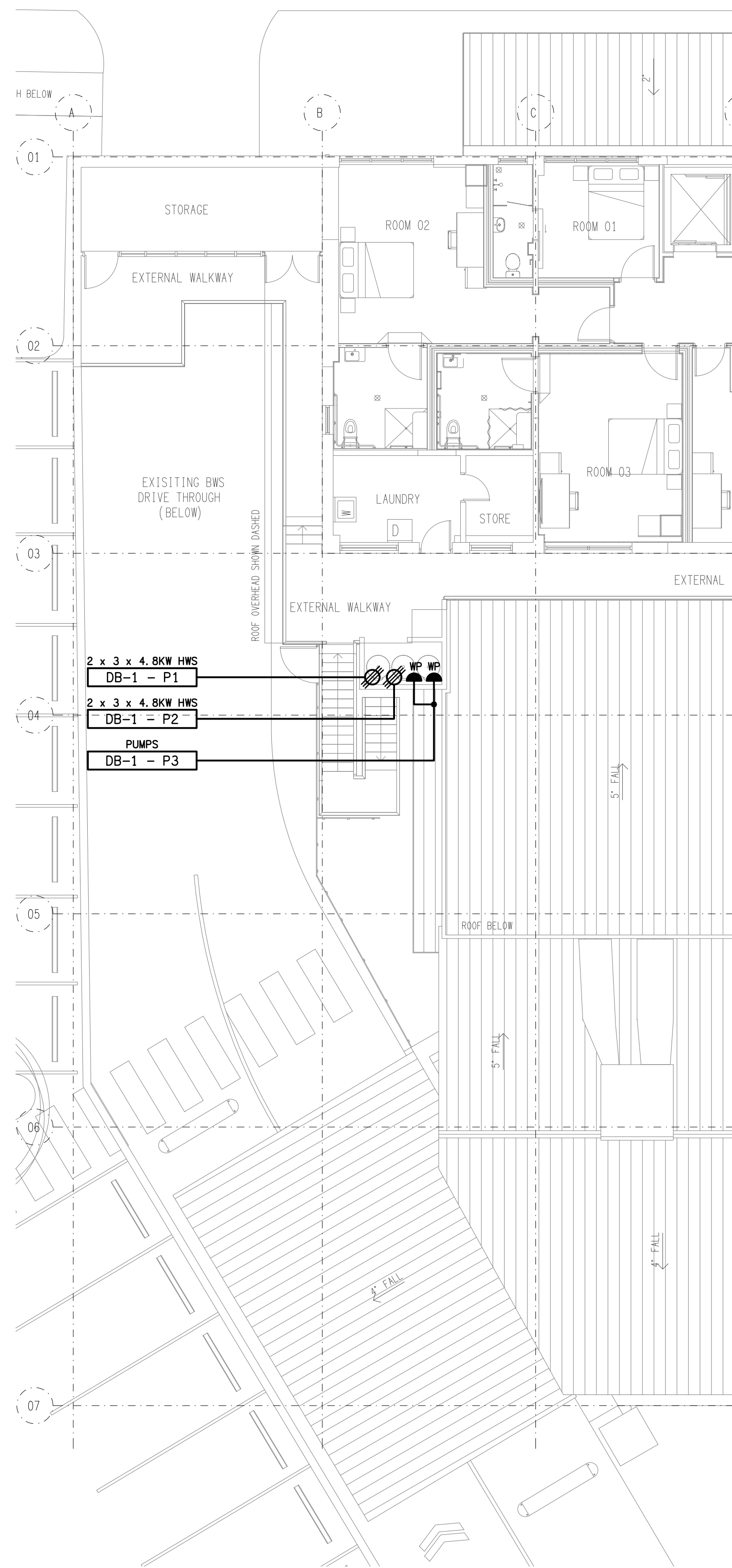
A - AMP CURRENT RATING  
AB - MOUNT ABOVE BENCH.  
AFFL - ABOVE FINISHED FLOOR LEVEL.  
BB - MOUNT BELOW BENCH.  
BH - MOUNT ON BULKHEAD.  
CEIL - MOUNT ON CEILING.  
CS - MOUNT WITHIN CEILING SPACE.  
C/W - COMPLETE WITH.  
DW - DISHWASHER.  
HP - HOT PLATE.  
HWS - HOT WATER SYSTEM.  
MCB - MINIATURE CIRCUIT BREAKER.  
MSB - MAIN SWITCHBOARD.  
MSSB - MECHANICAL SERVICES SWITCHBOARD.  
MW - MICROWAVE.  
N - NEON / LED INDICATOR WHEN ON.  
NTS - NOT TO SCALE.  
OV - OVEN.  
QDC - QUEENSLAND DEVELOPMENT CODE.  
RCBO - CIRCUIT BREAKER C/W AN INTEGRAL 30mA RESIDUAL CURRENT DEVICE.  
RCD - CIRCUIT PROTECTED VIA A 30mA RESIDUAL CURRENT DEVICE.  
REF - REFRIGERATOR.  
UNO - UNLESS NOTED OTHERWISE.  
WP - WEATHERPROOF TO IP56 UNO.  
500 - NUMBER DENOTES MOUNTING HEIGHT AFFL.

ELECTRICAL DESIGN GROUP BRISBANE PTY LTD ACN 092 710 793		THE COPYRIGHT OF THIS DRAWING REMAINS THE PROPERTY OF THE ELECTRICAL DESIGN GROUP.		PROJECT: PRINCE OF WALES HOTEL, NUNDAH		DRAWING: ELECTRICAL SERVICES NOTES	
TRADING AS: ELECTRICAL DESIGN GROUP		USE FIGURED DIMENSIONS IN PREFERENCE TO SCALE.		BRISBANE		GOLD COAST	
P.O.Box 15, Sherwood Q.4075 Phone: (07) 3278 4375 Email: brisbane@edg.net.au Web: www.edg.net.au		ALL DIMENSIONS TO BE VERIFIED ONSITE.		100 BUCKLAND ROAD, NUNDAH		SCALE: NOT TO SCALE AT A1	
						PROJECT NO: C3419a	
						DRAWING NO: E02	
						REVISION: A	
						DATE: 19/02/2025	





**GROUND LEVEL**  
FLOOR PLAN  
SCALE 1: 100

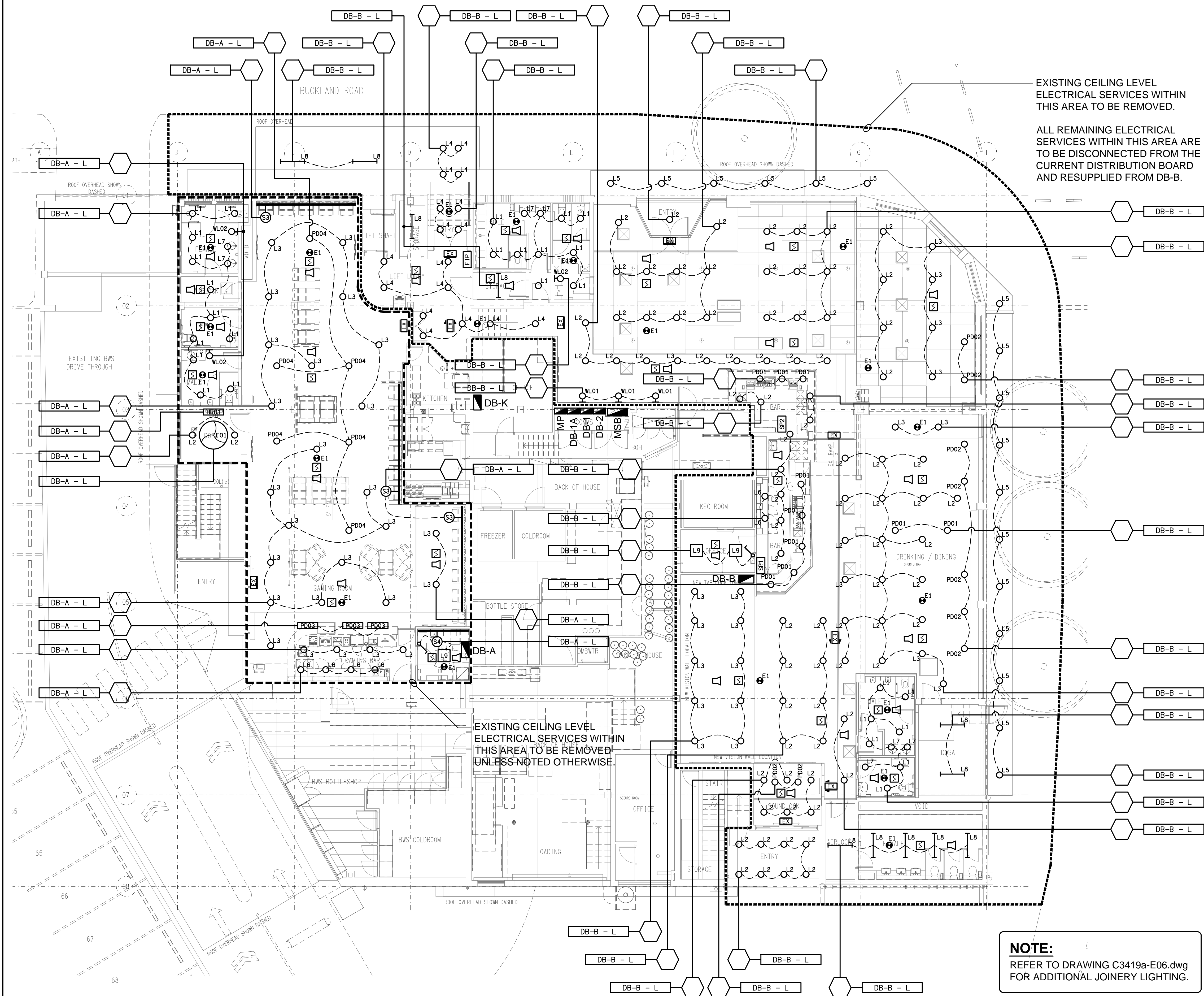


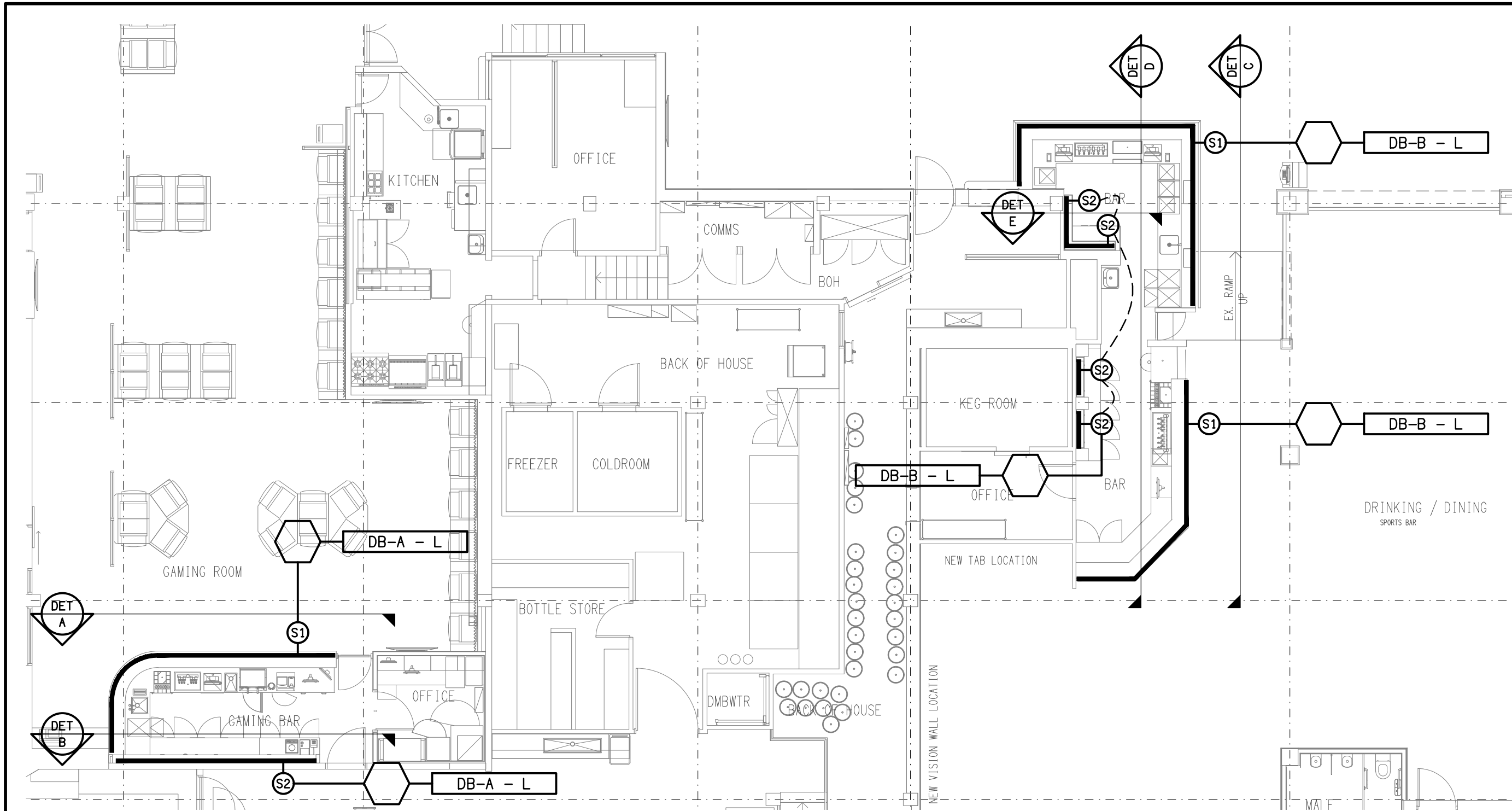
**LEVEL 1**  
PART FLOOR PLAN  
SCALE 1: 100



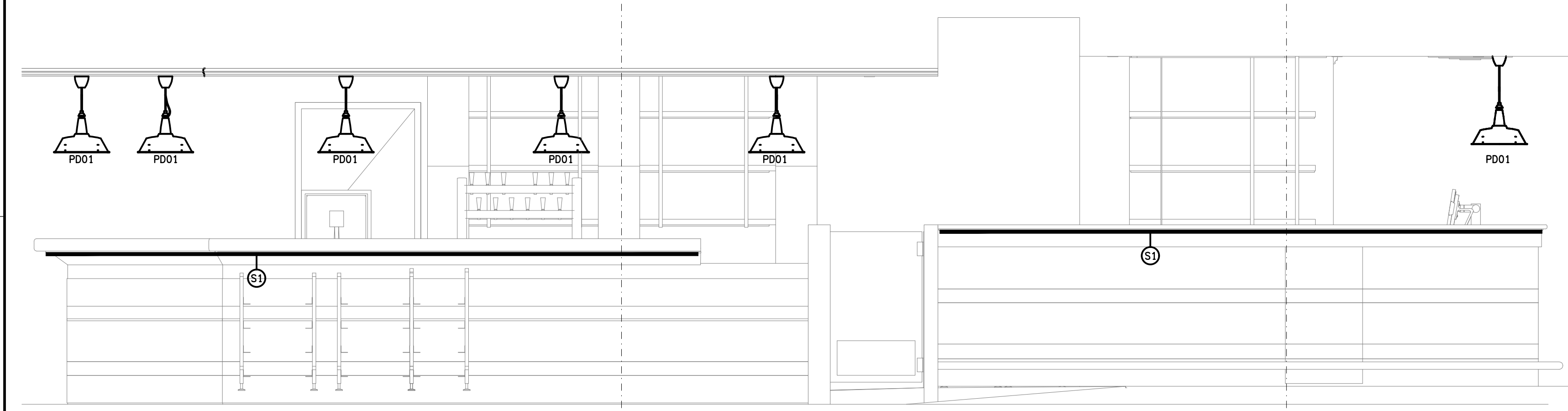
SCALE: 1:50 & 1:100 AT A1 PROJECT NO: **C3419a** DRAWING NO: **E04** REVISION: **A**

100 BUCKLAND ROAD, NUNDAH

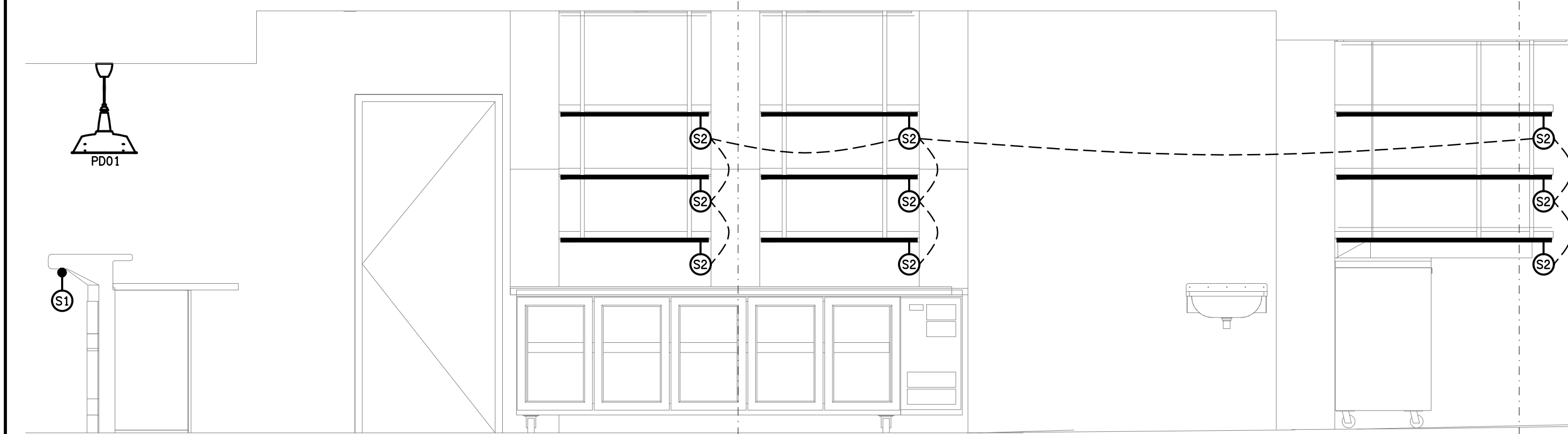




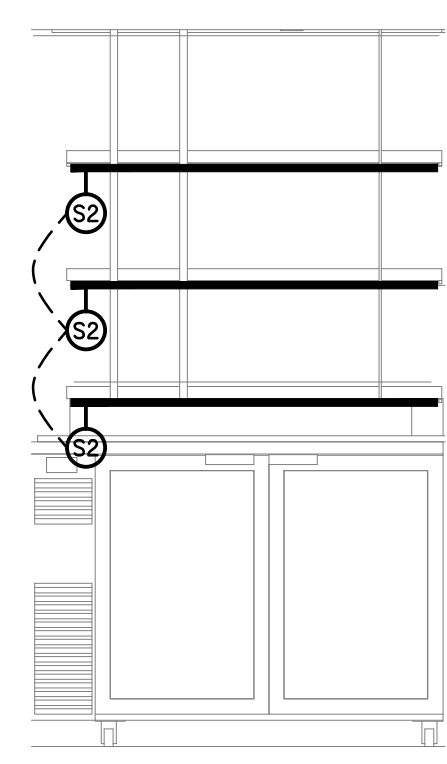
**PART PLAN**  
JOINERY LIGHTING  
SCALE 1:100



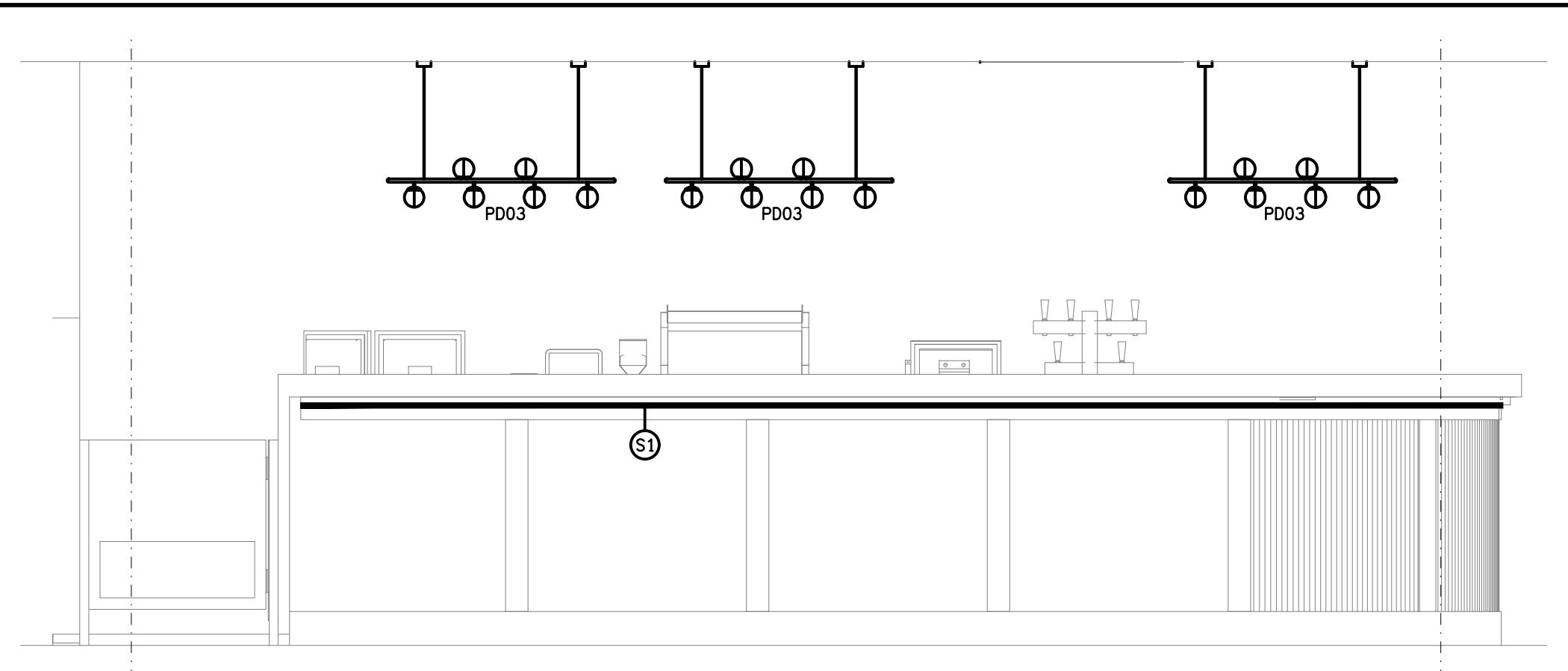
**DETAIL C**  
BISTRO FRONT COUNTER ELEVATION  
SCALE 1:25



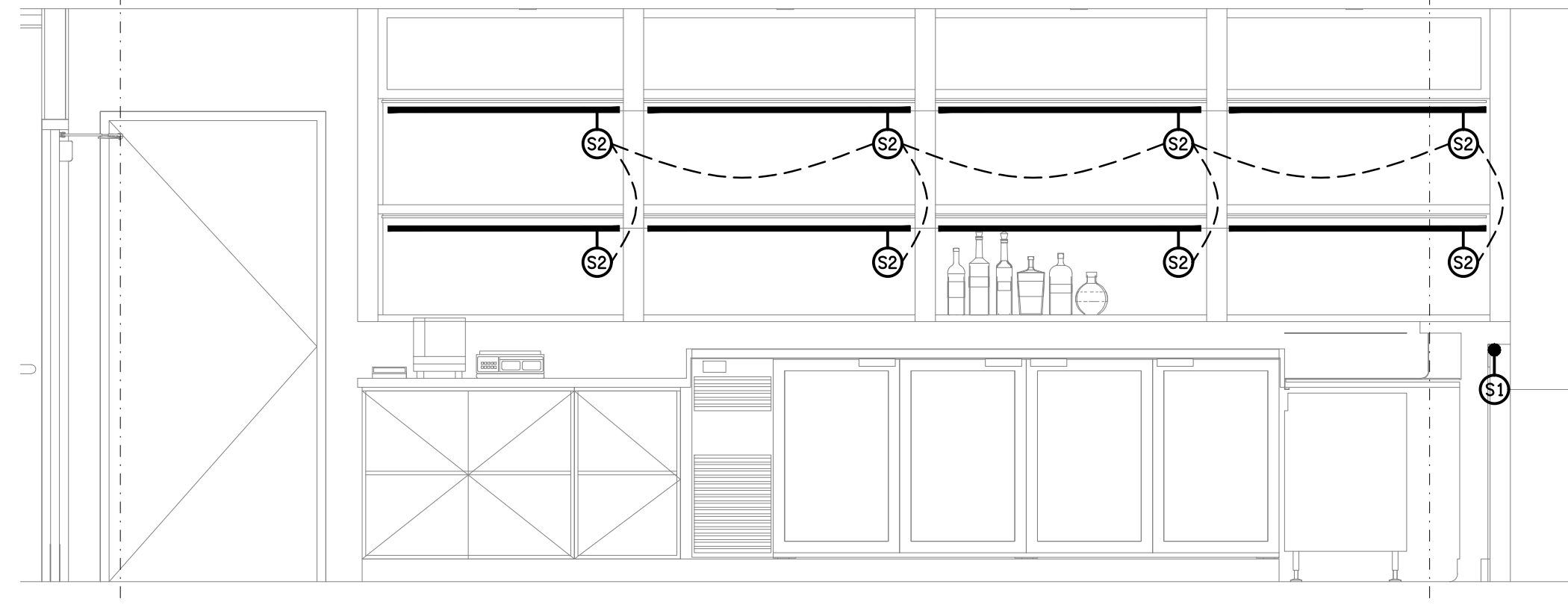
**DETAIL D**  
BISTRO REAR WALL ELEVATION 1  
SCALE 1:25



**DETAIL E**  
BISTRO REAR WALL ELEVATION 2  
SCALE 1:25



**DETAIL A**  
GAMING FRONT COUNTER ELEVATION  
SCALE 1:25



**DETAIL B**  
GAMING REAR WALL ELEVATION  
SCALE 1:25