



ELECTRICAL DESIGN GROUP

ELECTRICAL BUILDING SERVICES CONSULTANTS

P.O. Box 15, SHERWOOD Q. 4075

Phone: (07) 3278 4375

Website: www.edg.net.au Email: brisbane@edg.net.au

C3429a - WOODCREST STATE COLLEGE - CHANGE FACILITY & COVERED WALKWAYS C3429a-0001(B).xls

ELECTRICAL SERVICES CONTRACT DOCUMENT SCHEDULE

REVISION B - 17 DECEMBER 2024

ISSUING INFORMATION				DATE OF ISSUE								
	DAY	MONTH	YEAR	13	17							
				12	12							
				24	24							
				C	C							
REASON FOR ISSUE												
A = APPROVAL		C = CONSTRUCTION		N = COORDINATION		P = PRELIMINARY		T = TENDER				

DISTRIBUTION				NUMBER OF COPIES							
WWW.EDG.NET.AU				1E	1E						
ASW ELECTRICAL				1E	1E						
P = PRINT T = TRACING D = DISC E = EMAIL F = FAX											

DOCUMENTS		TITLE	REVISION								
C3429a-E01.dwg		NOTES DEMOLITION	A								
C3429a-E02.dwg		PROPOSED PLANS	A	B							
C3429a-0001.xls		CONTRACT DOCUMENT SCHEDULE	A	B							

NOTES

1. EXTENT OF WORKS

THE ELECTRICAL SERVICES SUB-CONTRACT INCLUDES BUT IS NOT LIMITED TO THE FOLLOWING:

- SUPPLY AND INSTALLATION OF ALL COMPONENTS FORMING PART OF THE ELECTRICAL SERVICES.
- CO-ORDINATION.
- INSPECTIONS.
- TESTING AND COMMISSIONING.
- MAINTENANCE.
- CABLING, CABLE SUPPORT SYSTEMS AND ACCESS.
- POWER DISTRIBUTION.
- LIGHTING.
- ALL MINOR COMPONENTS AND INCIDENTAL WORKS NOT SPECIFICALLY REFERRED TO, HOWEVER NECESSARY TO COMPLETE THE ELECTRICAL SERVICES INSTALLATION SUCH THAT IT IS HANDED OVER COMPLETE, OPERATIONAL AND FIT FOR THE INTENDED USE.

SUPPLY ALL LABOUR, MATERIALS, EQUIPMENT, AND ALL OTHER ITEMS, WHETHER MENTIONED IN DETAIL OR NOT, REQUIRED FOR THE SATISFACTORY COMPLETION OF THE ELECTRICAL SERVICES INSTALLATION, LEAVING IN FULL WORKING ORDER TO THE SATISFACTION OF THE PROJECT MANAGER.

SUPPLY ALL LABOUR, MATERIALS, EQUIPMENT, AND ALL OTHER ITEMS, WHETHER MENTIONED IN DETAIL OR NOT, REQUIRED FOR THE SATISFACTORY COMPLETION OF THE ELECTRICAL SERVICES INSTALLATION, LEAVING IN FULL WORKING ORDER TO THE SATISFACTION OF THE PROJECT MANAGER.

ACCEPT FULL RESPONSIBILITY FOR LIASING, ARRANGING AND CO-ORDINATION OF ALL WORKS THAT HAVE AN EFFECT ON OR WILL BE AFFECTED BY THE ELECTRICAL SERVICES.

2. WORKMANSHIP

ENSURE THAT THE ELECTRICAL WORK IS PERFORMED BY THE HOLDER OF A CURRENT ELECTRICAL SUB CONTRACTOR LICENSE AND THE SERVICES COVERED BY THE ACMA IS PERFORMED BY THE HOLDER OF THE APPROPRIATE CURRENT ACMA LICENSE. ENSURE THE INSTALLATION AND ALL COMPONENTS, FIXTURES, FITTINGS, OUTLETS AND CABLES ARE SUPPLIED AND INSTALLED TO A HIGH STANDARD THROUGHOUT, AND INSTALLED IN A NEAT AND TRADESMAN LIKE MANNER, TO THE CURRENT INDUSTRY STANDARDS. ENSURE ALL MATERIALS AND COMPONENTS OF A SIMILAR TYPE ARE OF THE SAME MANUFACTURER AND INSTALLED IN A UNIFORM MANNER.

IT IS THE ELECTRICAL SUB CONTRACTOR'S RESPONSIBILITY TO ENSURE THAT THE INSTALLATION IS FIT FOR PURPOSE AND IS PROVIDED AS A COMPLETE WORKING INSTALLATION. IT IS THE ELECTRICAL SUB CONTRACTOR'S RESPONSIBILITY TO PROVIDE ALL COMPONENTS, FITTINGS, FIXTURES, SYSTEMS, PROGRAMMING ETC. IRRESPECTIVE OF THE LEVEL DETAILED IN THE DOCUMENTS SUCH THAT THE INSTALLATION IS PROVIDED AS A COMPLETE WORKING INSTALLATION.

CONCEAL ALL WIRING AND CONDUITS. EXPOSED CABLING OR CONDUITS ARE GENERALLY NOT ACCEPTABLE. IT IS NOTED THAT CHASING AND REINSTATEMENT WILL BE REQUIRED. ENSURE ALL COMPONENTS, EQUIPMENT AND MATERIALS SUPPLIED ARE NEW, UNUSED, DESIGNED AND SELECTED TO ENSURE SATISFACTORY OPERATION UNDER VARYING ATMOSPHERIC, CLIMATIC, HUMID TROPICAL CONDITIONS WITHOUT DISTORTION AND DETERIORATION IN ANY PART AFFECTING EFFICIENCY AND RELIABILITY OF THE SYSTEMS. DESIGN AND SELECT ALL EQUIPMENT TO PROVIDE THE NECESSARY SAFETY TO HUMAN LIFE AND PROPERTY DURING OPERATION AND MAINTENANCE WITH PARTICULAR ATTENTION GIVEN TO ELECTRICAL SAFETY AND SEGREGATION PRECAUTIONS.

CHECK THE FINISHED PAINTWORK AROUND THE AREA OF EACH INSTALLATION AND TOUCH UP ALL DAMAGED PARTS AND FINISHES AFTER THE INSTALLATION OF THE ELECTRICAL SERVICES.

ALL WORKS ARE TO BE CARRIED OUT IN ACCORDANCE WITH THE BUILDER'S PROGRAM. ENSURE ALL FINAL LOCATIONS OF OUTLETS AND FITTINGS ARE CO-ORDINATED ONSITE WITH THE ARCHITECT AND ALL OTHER SERVICES, TO THE APPROVAL OF THE PROJECT MANAGER. ALLOW TO CO-ORDINATE THE FINAL LOCATION OF ALL EQUIPMENT, FITTINGS, & OUTLETS, SUCH THAT THEY ARE INSTALLED IN ACCORDANCE WITH THE AS3000 RESTRICTED ZONES, AND ARE NOT COVERED INAPPROPRIATELY.

ENSURE THAT ALL METAL SURFACES ARE SUITABLY PROTECTED AGAINST CORROSION, AND THAT ALL PLASTIC MATERIALS ARE UV STABILISED.

PROVIDE ALL MATERIALS AS NEW, AND OF THE HIGHEST CLASS AVAILABLE FOR THEIR RESPECTIVE TYPES. ENSURE ALL ASPECTS OF THE WORK ARE OF A HIGH STANDARD THROUGHOUT, AND INSTALLED IN A NEAT AND TRADESMAN LIKE MANNER, TO THE CURRENT INDUSTRY STANDARDS.

IRRESPECTIVE OF INFORMATION CONTAINED IN THE ELECTRICAL SERVICES DOCUMENTS OR IN INSTRUCTIONS, IT IS THE ELECTRICAL SUB CONTRACTOR'S RESPONSIBILITY TO ENSURE ALL ELECTRICAL SERVICES WORKS ARE INSTALLED IN ACCORDANCE WITH THE REQUIREMENTS OF THE FOLLOWING. REFER ANY DISCREPANCIES BETWEEN THE REQUIREMENTS OF THE FOLLOWING AND/OR THE ELECTRICAL SERVICES DOCUMENTS AND INSTRUCTIONS TO THE ARCHITECT FOR CLARIFICATION PRIOR TO THE PLACING OF ORDERS, FABRICATION OR INSTALLATION OF THE ITEMS/METHODS IN DISCREPANCY.

- NCC BUILDING CODE OF AUSTRALIA.
- ELECTRICITY ACT.
- ELECTRICAL SAFETY ACT.
- ENERGEX REQUIREMENTS.
- THE QUEENSLAND ELECTRICITY CONNECTION MANUAL V4 (QECM) AND THE NATIONAL ELECTRICITY METERING STANDARDS (NEM).
- AS/NZS3000.
- AS3008.
- LOCAL BRIGADE.
- WORKPLACE HEALTH AND SAFETY ACT.
- TELECOMMUNICATIONS ACT.
- ACMA REQUIREMENTS.

3. AUTHORITIES

ENSURE ALL OF THE ELECTRICAL SERVICES COMPLY WITH THE REQUIREMENTS OF ALL REGULATORY AUTHORITIES HAVING JURISDICTION OVER THE SITE INCLUDING BUT NOT LIMITED TO THE FOLLOWING:

- ACMA.
- LOCAL COUNCIL.
- ENERGEX.
- STATE GOVERNMENT DEPARTMENT OF ENVIRONMENT AND HERITAGE.
- OLD GOVERNMENT, DIVISION OF WORKPLACE, HEALTH AND SAFETY.
- OLD FIRE AND EMERGENCY SERVICES.

4. CABLES

UNLESS OTHERWISE SPECIFIED, INSTALL AND TERMINATE CABLES IN ACCORDANCE WITH THE MANUFACTURERS' RECOMMENDATIONS. DETERMINE THE FINAL ROUTES TO SUIT THE BUILDING STRUCTURE AND SITE CONDITIONS. UNLESS NOTED OTHERWISE, PROVIDE ALL 240 VOLT POWER AND LIGHTING WIRING AS 2.5mm² TWIN & EARTH STRANDED COPPER CONDUCTORS, PVC INSULATED 0.6/1kV V75 GRADE TO AS3174, PROTECTED BY A 20 AMP CIRCUIT BREAKER. ALL CONDUIT AND FITTINGS TO BE RIGID UPVC TO AS2053, UNLESS NOTED OTHERWISE.

NOTES

5. EMERGENCY LIGHTING

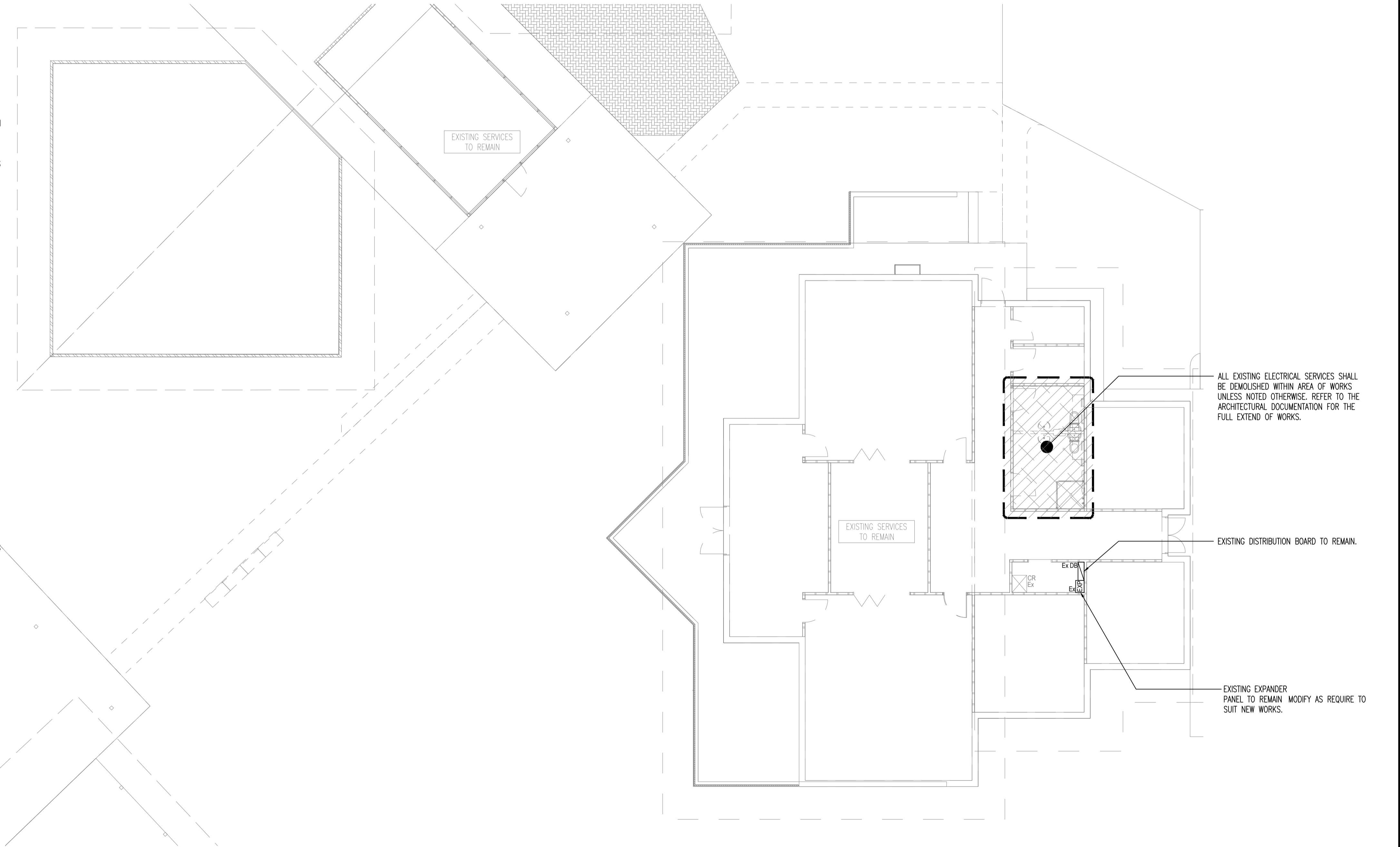
THE LIGHTING COMPONENT OF THE ELECTRICAL SERVICES SUB-CONTRACT INCLUDES ALL OF THE INTERNAL AND EXTERNAL LIGHT FITTINGS, LAMPS AND ACCESSORIES. PROVIDE ALL NECESSARY ACCESSORIES TO FACILITATE THE COMPLETE LIGHTING INSTALLATION. THE LIGHTING COMPONENT OF THE ELECTRICAL SERVICES SUB-CONTRACT INCLUDES THOUGH IT IS NOT LIMITED TO THE FOLLOWING EXTENT OF WORK:

- INTERNAL AND EXTERNAL LIGHTING.
- EMERGENCY AND EXIT LIGHTING.
- EARTHING OF THE LIGHTING INSTALLATION.
- LIGHTING CONTROL.
- LIGHTING SUBCIRCUITS.
- TESTING AND COMMISSIONING.

PROVIDE A SINGLE POINT EMERGENCY LIGHTING SYSTEM THAT COMPLIES WITH THE LATEST ISSUE OF ALL PARTS AS2293 AND THE RELEVANT PARTS OF THE NCC BCA. INSTALL EMERGENCY LIGHT FITTINGS NOMINATED AS MAINTAINED WITH THE LAMP PERMANENTLY ON SUPPLIED VIA AN UNSWITCHED ACTIVE MAINS SUPPLY WHEN THE MAINS SUPPLY IS AVAILABLE. WHEN THE MAINS SUPPLY IS NOT AVAILABLE, THE LAMP IS TO REMAIN ON SUPPLIED BY THE EMERGENCY PACK. SINGLE LAMP MAINTAINED EMERGENCY LIGHTS ARE NOT SWITCHED WITH THE LOCAL GENERAL AREA LIGHTING. (THE LAMP IS ALWAYS ON.)

INSTALL EMERGENCY LIGHT FITTINGS NOMINATED AS NON-MAINTAINED AS FOLLOWS:

- IF THE FITTING IS NOT BEING SWITCHED, THE LAMP IS TO REMAIN OFF WHEN THE MAINS SUPPLY IS AVAILABLE. WHEN THE MAINS SUPPLY IS NOT AVAILABLE THE LAMP IS TO BE SWITCHED ON SUPPLIED BY THE EMERGENCY PACK. UNSWITCHED SINGLE LAMP NON-MAINTAINED EMERGENCY LIGHTS ARE NOT SWITCHED WITH THE LOCAL GENERAL AREA LIGHTING. (THE LAMP IS ON ONLY WHEN THE MAINS SUPPLY IS NOT AVAILABLE.)
- IF THE FITTING IS BEING SWITCHED, THE LAMP IS TO BE SUPPLIED AND CONTROLLED WITH THE LOCAL GENERAL AREA LIGHTING WHEN THE MAINS SUPPLY IS AVAILABLE. WHEN THE MAINS SUPPLY IS NOT AVAILABLE THE LAMP IS TO BE SWITCHED ON, SUPPLIED BY THE EMERGENCY PACK. (THE LAMP IS ON WHEN TURNED ON WITH THE LOCAL GENERAL LIGHTING OR THE MAIN SUPPLY IS NOT AVAILABLE.)



DEMOLITION SCOPE OF WORKS

- ALL LIGHTING SERVICES INCLUDING ASSOCIATED CABLING AND COMPONENTS MADE REDUNDANT SHALL BE DECOMMISSIONED, ISOLATED AND DEMOLISHED. THIS INCLUDES BUT IS NOT LIMITED TO LUMINAIRES, LIGHTING LOOMS, DOWNLIGHTS, LIGHTING CONTROLS, CABLE SUPPORT, EMERGENCY AND EXIT LIGHTING.
 - EXISTING LUMINAIRES MADE REDUNDANT FROM WORKS SHALL BE RETURNED TO THE BUILDER OWNERS REPRESENTATIVE (OR DISPOSED ON THEIR REQUEST), CONFIRM WITH BUILDING OWNER REPRESENTATIVE PRIOR TO DISPOSAL.
 - DECOMMISSION, REMOVE AND MAKE GOOD THE FOLLOWING (WHERE AFFECTED BY THE DEMOLITION WORKS):
 - THE EXISTING ELECTRICAL SERVICES MADE REDUNTANT BY THE NEW FIT-OUT WORKS SCOPE. REFER TO THE ELECTRICAL AND ARCHITECTURAL SET OF DOCUMENTS TO UNDERSTAND THE GREATER SCOPE OF WORK FOR THIS PROJECT. MAKE GOOD SURROUNDING AREA OF REMOVAL IN PREPARATION FOR BUILDING WORKS. CONTRACTOR SHALL VISIT SITE DURING THE TENDERING PERIOD AND ASCERTAIN WHAT SERVICES ARE EFFECTED BY DEMOLITION.
 - EXISTING LUMINAIRES, LIGHTING CONTROLS, AND ASSOCIATED CABLING / CONDUITS.
 - ALL EXISTING DEVICES AND CABLE CONTAINMENT REMAINING ON WALLS SCOPED FOR PAINTING, OR INSTALLED ON NEW BUILDING FABRICS SHALL BE PROFESSIONALLY CLEANED. REFER TO ARCHITECTURAL SET OF DOCUMENTS TO UNDERSTAND THE GREATER SCOPE OF WORKS FOR THIS PROJECT.
- TRAVERSING, INTERCONNECTING SERVICES
- THE ELECTRICAL / COMMS / SECURITY HAVE CABLING / INTERFACES TRAVERSING THROUGH AREAS SUBJECT FOR DEMOLITION. ASCERTAIN THESE EXISTING CABLES / SYSTEMS ONSITE PRIOR TO DEMOLITION WORKS. THESE SYSTEMS SHALL BE CAREFULLY RETAINED AND OPERATIONAL IN ENTIRELY DURING WORKS AND IN SOME CASES RECONNECTED. ELECTRICAL CONTRACTOR SHALL ENSURE ALL EXISTING SYSTEMS OUTSIDE OF THIS SCOPE SHOWN STILL OPERATE WITHOUT MAJOR UPGRADE WORKS. CONTRACTOR IS TO VISIT SITE DURING THE TENDER PERIOD TO ENSURE THERE TENDER PRICE ALLOWS FOR THESE INTERCONNECTING SYSTEMS.

LIGHTING LEGEND

REFER TO ELECTRICAL PERFORMANCE SPECIFICATION FOR LIGHTING DESIGN/CERTIFICATION AND FITTING PERFORMANCE SPECIFICATION REQUIREMENTS. APPROVED OR EQUAL FITTING RANGE PROVIDED BELOW. FINAL FITTINGS, WATTAGES, BEAM ANGLES AND THE LIKE SHALL CONFIRM WITH DESIGN REQUIREMENTS

	MANUFACTURER	FITTING NAME	POWER (W)	INSTALLATION METHOD	IP RATING	FINISH (*)
F1	CLEVERTRONICS	ARGONAUT PRO WP 600mmL	TO CONFIRMED BY THE D&C DESIGN CONSULTANT.	SURFACE MOUNTED	IP65	GREY
Ⓢ	ROBUS	VEGA GEN2 LED BULKHEAD		SURFACE MOUNTED	IP65	WHITE

	MANUFACTURERS	FITTING NAME	CAT NO.	INSTALLATION METHOD	IP RATING
E1	CLEVERTRONICS OR APPROVED EQUAL	LP LIFELIGHT PRO IP65	CLIFE-PRO -SM-WP (CT PLUS)	SURFACE MOUNTED	IP65

EXISTING SERVICES LEGEND

- Ex DB
EXISTING DISTRIBUTION BOARD TO REMAIN, MODIFY/EXTEND/UPGRADE AS REQUIRED TO SUIT NEW WORKS.
- CREX
EXISTING COMMS HUB TO REMAIN, MODIFY/EXTEND/UPGRADE AS REQUIRED TO SUIT NEW WORKS.
- Ex EXP
EXISTING SECURITY EXPANDER PANEL TO REMAIN, MODIFY/EXTEND/UPGRADE/REPROGRAM AS REQUIRED TO SUIT NEW WORKS.

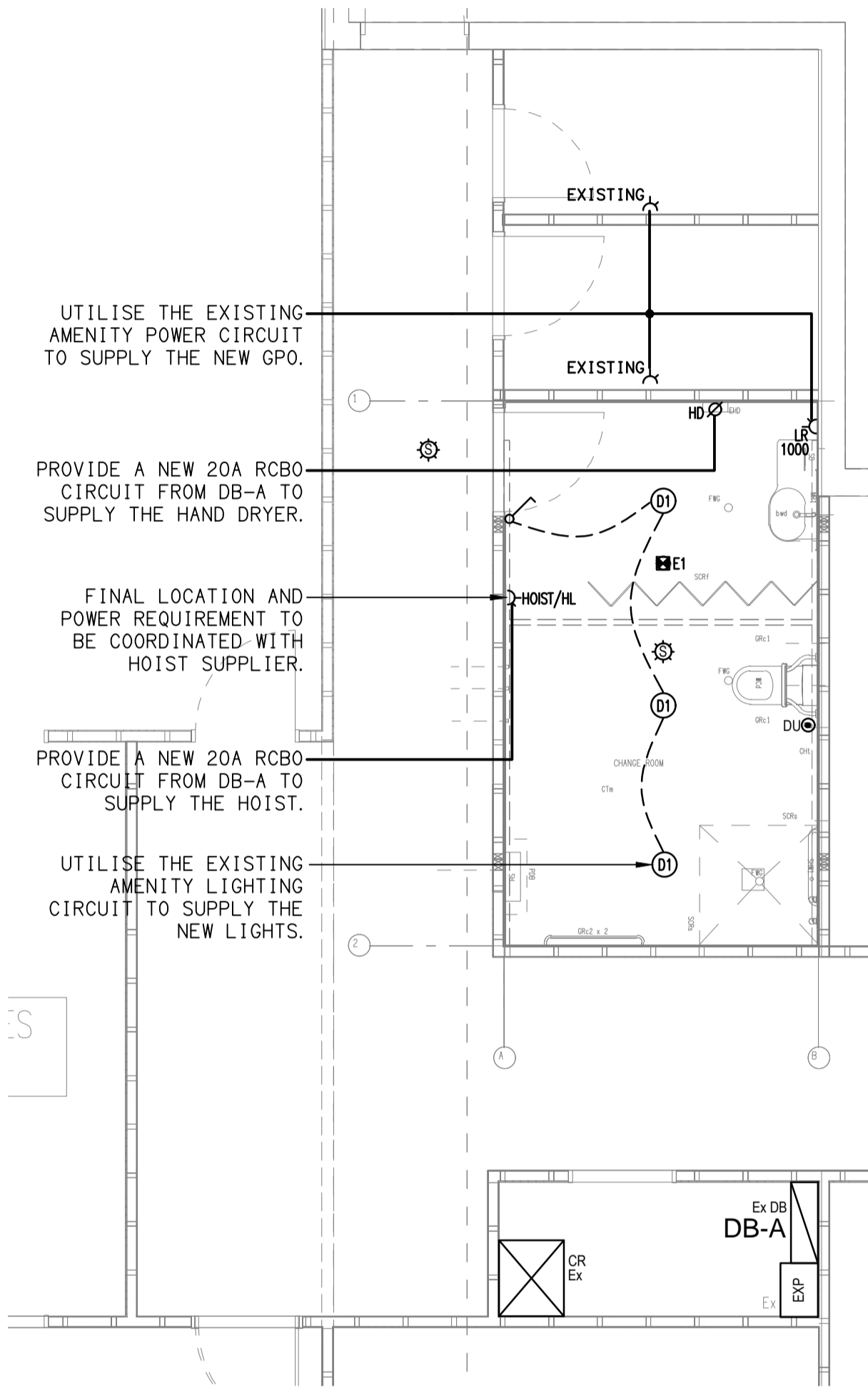
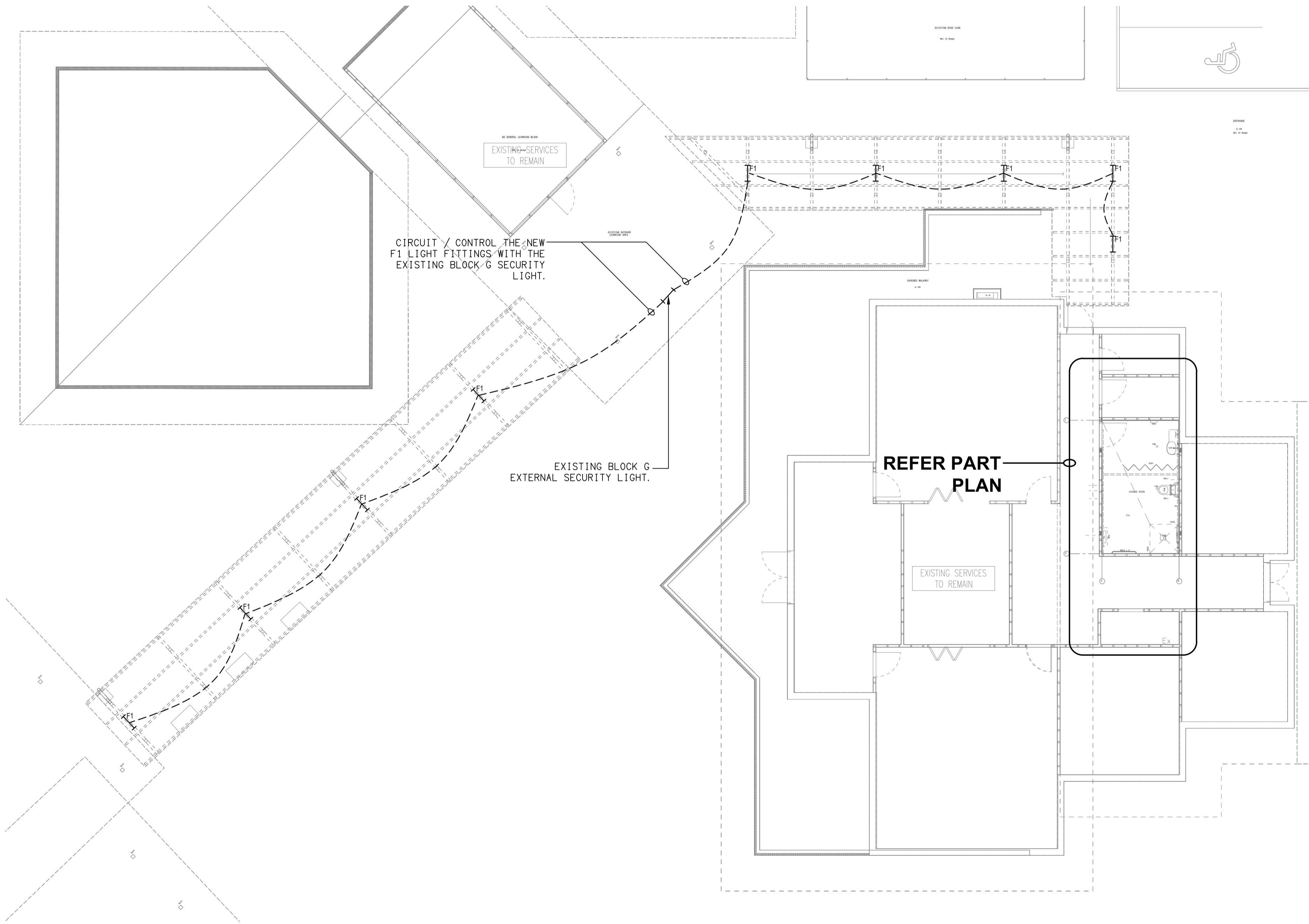
ABBREVIATIONS

- 500 - MOUNTED 500mm AFL
COMMS - COMMUNICATIONS
EX - EXISTING
GPO - SWITCHED SOCKET OUTLET
HD - HAND DRYER
HL - HIGH LEVEL
LR - LARGE ROCKER
n - QUANTITY
PE - PHOTO ELECTRIC CELL

POWER LEGEND

- ⚡ 10A DOUBLE SWITCH SOCKET OUTLET C/W SAFETY SHUTTER OVER ACTIVE, AND CAPABLE TO BE USED BY EITHER TWO PIN OR THREE PIN PLUGS. MOUNT AT 500mm AFL TO CENTRE OF OUTLET U.N.O. TYPE: CLIPSAL STANDARD RANGE
- ⌀ SINGLE PHASE PERMANENT CONNECTION C/W ADJACENT IP RATED ISOLATOR TYPE: CLIPSAL 56 SERIES
- 🔔 SECURITY SIREN ALARM AND BLUE STROBE, C/W SEPARATE DEDICATED BATTERY, SOUND LEVEL OUTPUT 130dB AT 1M, & 2 OFF PROTECTIVE ENCLOSURES. TYPE: TECHNOALARM BRAND OR APPROVED EQUAL
- 🔑 DURESS BUTTON, FIXED DURESS ACTUATORS SHALL BE OF STAINLESS STEEL CONSTRUCTION AND WITH A MECHANICALLY LATCHING, KEY-RESETABLE DPDT SWITCH. ALL ACTUATOR RESET MECHANISMS ARE TO BE COMMON-KEYED. SUPPLY THE INSPECTING OFFICER WITH ONE KEY PER DURESS ACTUATOR AT THE TIME OF SYSTEM COMMISSIONING. TYPE: ADEMCO STYLE, SEADAN SECURITY SMART 003

ELECTRONIC SECURITY LEGEND



PART PLAN
PROPOSED ELECTRICAL WORKS
SCALE 1:50