



ELECTRICAL DESIGN GROUP

ELECTRICAL BUILDING SERVICES CONSULTANTS

P.O. Box 15, SHERWOOD Q. 4075

Phone: (07) 3278 4375

Website: www.edg.net.au Email: brisbane@edg.net.au

C3455a - CAPALABA SPORTS CLUB - MULTI-STOREY CARPARK

C3455a-0001(A).xls

ELECTRICAL SERVICES CONTRACT DOCUMENT SCHEDULE

REVISION A - 20 FEBRUARY 2025

ISSUING INFORMATION				DATE OF ISSUE								
				DAY	20							
				MONTH	02							
				YEAR	25							
				REASON FOR ISSUE	P							
A = APPROVAL		C = CONSTRUCTION		N = COORDINATION		P = PRELIMINARY		T = TENDER				

DISTRIBUTION				NUMBER OF COPIES															
WWW.EDG.NET.AU				1E															
BSPN				1E															
P = PRINT				T = TRACING				D = DISC				E = EMAIL				F = FAX			

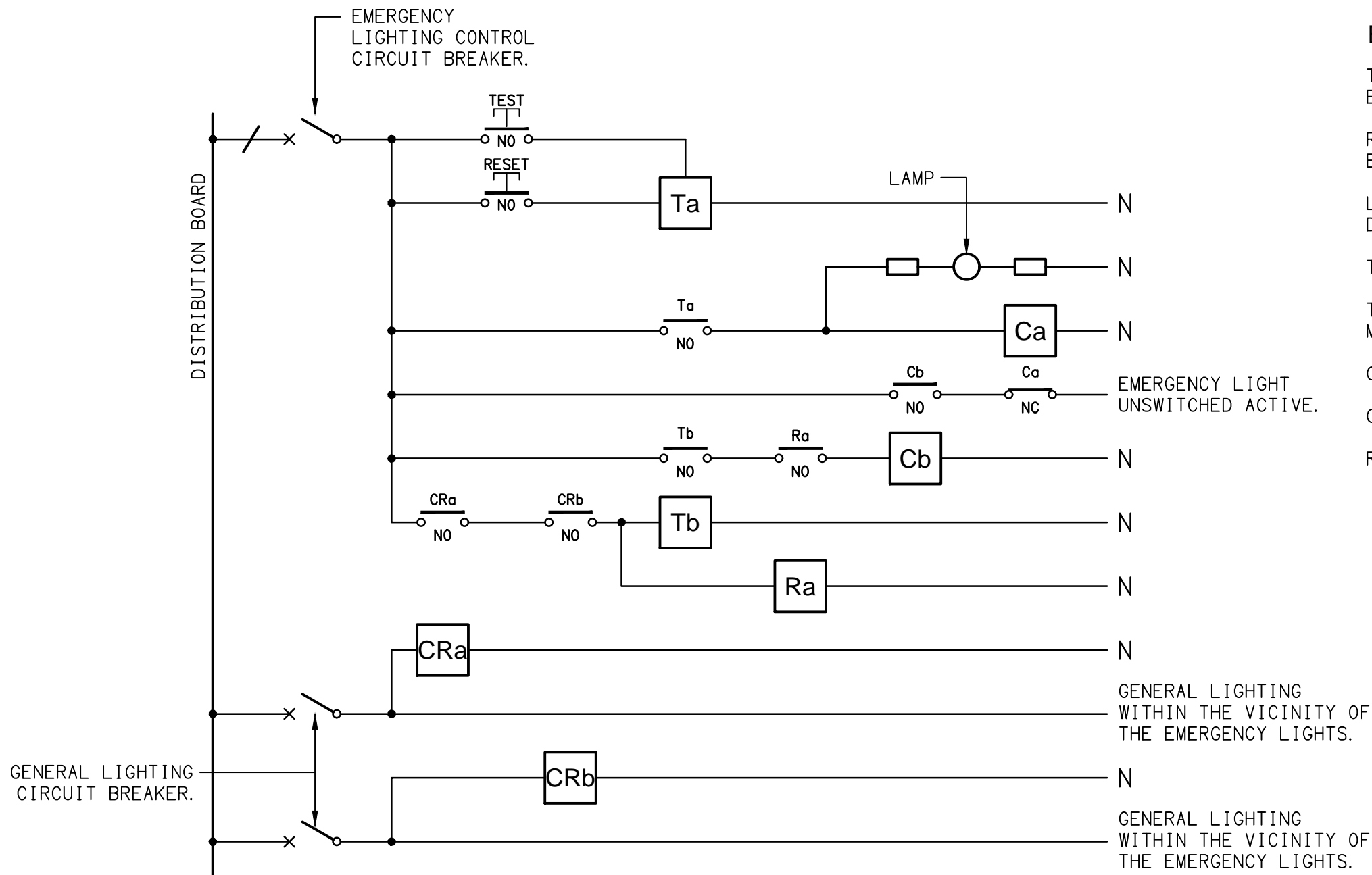
DOCUMENTS				REVISION									
C3455a-E01.dwg	LEGEND & SITE PLAN			A									
C3455a-E02.dwg	GROUND LEVEL			A									
C3455a-E03.dwg	LEVEL 1			A									
C3455a-E04.dwg	NOTES			A									
C3455a-0001.xls	CONTRACT DOCUMENT SCHEDULE			A									
C3455a-0004.xls	DISTRIBUTION BOARD DB-C SCHEDULE												
C3455a-0001.zip	FITTING & OUTLET DATASHEETS												

LEGEND

THE LIGHT FITTING SUPPLIER CONTACT DETAILS MAY BE AVAILABLE ON THE EDG WEBSITE VIA THE FOLLOWING LINK www.edg.net.au/Links/Lighting.htm				
TYPE	LAMPS	DESCRIPTION	COLOUR / ACCESSORY	CATALOGUE No
L1	50W 4000K LED	POLE MOUNTED CARPARK LIGHT C/W INTEGRAL DRIVER WITH THE FITTING 6M ABOVE THE LEVEL 1 CARPARK DECK. ALL CONDUITS ARE TO HAVE A SPARE DRAW WIRE AND BE SHOWN ON THE AS CONSTRUCTED DOCUMENTS.	BLACK FITTING BLACK POLE	MELEC ML-ROX-50-4K-BK
L2	2 X 50W 4000K LED	TWIN POLE MOUNTED CARPARK LIGHTS C/W INTEGRAL DRIVER WITH THE FITTINGS 6M ABOVE THE LEVEL 1 CARPARK DECK. ALL CONDUITS ARE TO HAVE A SPARE DRAW WIRE AND BE SHOWN ON THE AS CONSTRUCTED DOCUMENTS.	BLACK FITTING BLACK POLE	2 X MELEC ML-ROX-50-4K-BK
L3	36W LED 4000K	SURFACE MOUNTED IP66 1200 LONG BATTEN C/W INTEGRAL DRIVER AND A MOVEMENT SENSOR	LIGHT GREY	EQUAL TO GAMMA STORM 1558-CCT-36W MS
L4	90W 5000K LED	SURFACE MOUNTED IP 65 CARPARK ENTRY LIGHT C/W INTEGRAL DALI DIMMABLE DRIVER AND ILLUMINATION LEVEL / MOVEMENT SENSOR. PROVIDE THE EXTERNAL CARPARK INSTALLATION WITH AN enLIGHTEN CECS CONTROLLER.	BLACK	EQUAL TO enLIGHTEN TAURO BLACK TB90-57-AR1-CECS
L5	42W 5000K LED	SURFACE MOUNTED IP 65 CARPARK ENTRY LIGHT C/W INTEGRAL DRIVER.	BLACK	EQUAL TO enLIGHTEN CHAMELEON 11 CHAM-C/BL12
L6	36W LED 4000K	SURFACE MOUNTED IP66 1200 LONG BATTEN C/W INTEGRAL DRIVER AND AN UNSWITCHED AS2293 NON MAINTAINED EMERGENCY PACK CONFIGURED TO ONLY OPERATE UPON MAINS FAILURE	LIGHT GREY	EQUAL TO GAMMA STORM 1558-CCT-36W
L7	17W LED 4000K	SURFACE MOUNTED DOWNLIGHT C/W INTEGRAL DRIVER	WHITE	BEGA 34021
L8	3000K LED 1000 LUMEN / METER	SURFACE MOUNTED IP66 EXTRUSION FIXED TO THE UNDERSIDE OF THE BEAM AS PER THE ARCHITECTURAL DETAIL. THE FITTING IS TO SPAN THE FULL WIDTH OF THE WALKWAY HARD BETWEEN THE COLUMNS. PROVIDE THE FITTING WITH A REMOTE DRIVER LOCATED IN A CONCEALED ACCESSIBLE POSITION.	BLACK	KLIK SYSTEMS EKKO 026 BEAM D
L9	100W 4000K LED	9M POLE AND CARPARK LIGHT C/W INTEGRAL DRIVER ALL CONDUITS ARE TO HAVE A SPARE DRAW WIRE AND BE SHOWN ON THE AS CONSTRUCTED DOCUMENTS.	BLACK FITTING BLACK POLE	MELEC ML-ROX-100-4K-BK
L10	22W 4000K LED	WALL MOUNTED IP65 DOWNLIGHT C/W INTEGRAL DRIVER	BLACK	GAMMA ILLUMINATION RODIO 1806-4K-22W
EX	LED	EXIT LIGHT: MAINTAINED WEATHER PROOF 24M VIEWING DISTANCE EXIT LIGHT C/W DIFFUSERS & DIRECTIONAL ARROWS AS SHOWN. CEILING OR WALL MOUNT BETWEEN 2100mm & 2700mm AFFL IF THERE IS NO VERTICAL SURFACE TO MOUNT THE FITTING ON WITHIN THIS RANGE CONFIRM THE MOUNTING HEIGHT WITH THE ENGINEER. AS2293 CLASSIFICATION C0-D1.25- C90-D2	WHITE	EQUAL TO CLEVERTRONICS LWELED
EMERGENCY PACK		LIGHT FITTINGS THAT ARE DESIGNATED AS BEING PROVIDED WITH AN EMERGENCY PACK ARE TO BE PROVIDED WITH AN INTEGRAL AS2293 EMERGENCY PACK. THE FITTINGS ARE TO BE NON MAINTAINED WITH ALL LAMPS SWITCHED AS PER THE LIGHTING CONTROL FOR THAT SPACE UNLESS NOTED OTHERWISE. REFER TO THE SPECIFICATION FOR FURTHER DETAILS OF THE CONFIGURATION AND SWITCHING OF EMERGENCY LIGHTS.		
WP	WEATHERPROOF POWER OUTLET (WP)	IP54 WEATHERPROOF SINGLE / DOUBLE POWER OUTLET AS NOTED ON DRAWING C/W COVER FLAP OVER SOCKET. MOUNT AT MINIMUM 1100mm AFFL U.N.O. RATING 10A U.N.O.	-	CLIPSAL WSCF227F
SIGNAGE CONNECTION		COORDINATE THE LOCATION AND CONNECTION WITH THE SIGN CONTRACTOR ENSURING THE GPO / ISOLATORS ARE PROVIDED WITH APPROPRIATE WEATHER PROTECTION AND ARE CONCEALED FROM VIEW.		
SINGLE-PHASE ISOLATOR		SINGLE-PHASE WEATHERPROOF ISOLATOR. MOUNT AT 1350mm AFFL U.N.O. RATING 20A U.N.O. CONNECT TO EQUIPMENT VIA FLEXIBLE CONDUIT.	-	CLIPSAL WHT20
THREE-PHASE ISOLATOR		THREE-PHASE WEATHERPROOF ISOLATOR. MOUNT AT 1350mm AFFL U.N.O. RATING 20A U.N.O. CONNECT TO EQUIPMENT VIA FLEXIBLE CONDUIT.	-	CLIPSAL WHT35
DB-C	DB-C	CARPARK DISTRIBUTION BOARD DB-C AS PER THE DB-C SCHEDULE, DB-C SCHEMATIC AND NOTES. PROVIDE A SHOP DRAWING OF DB-C FOR APPROVAL.		
MSB	MSB	MAIN SWITCHBOARD TO BE PROVIDED WITH A NEW MCCB TO SUPPLY DB-C. UPDATED THE MSB LABELS AT PRACTICAL COMPLETION.		

NOTE

ALL ELECTRICAL PENETRATIONS THROUGH THE ROOF SHEETING ARE TO BE IN LINE WITH THE STRUCTURAL OR MECHANICAL SERVICES PENETRATIONS TO AVOID DEDICATED FLASHINGS FOR THE ELECTRICAL SERVICES.

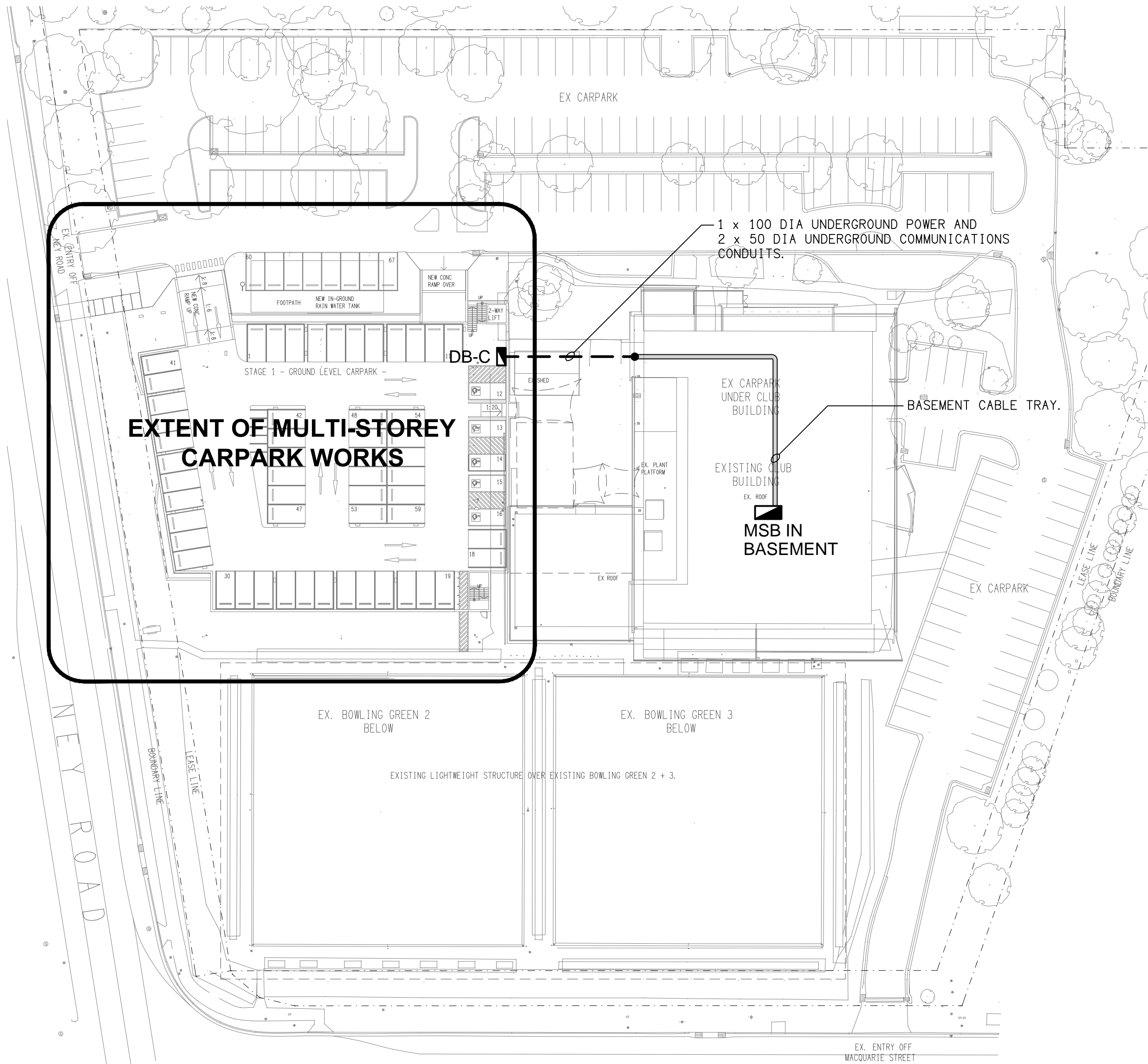


SCHEMATIC

EMERGENCY LIGHTING
NOT TO SCALE

NOTES

1. THE EMERGENCY LIGHT UNSWITCHED ACTIVE / GENERAL LIGHTING SWITCHED ACTIVE CIRCUIT ARRANGEMENT AND CONTROL IS TYPICAL FOR ALL CIRCUITS SUPPLYING EMERGENCY LIGHTS.
2. PROVIDE ADDITIONAL CONTROL RELAYS (CRx) CONFIGURED AS PER CRa AND CRb FOR ALL ADDITIONAL LIGHTING CIRCUITS THAT SUPPLY LIGHTS IN THE VICINITY OF THE EMERGENCY LIGHTS.



SITE PLAN

EXTENT OF MULTI-STOREY CARPARK WORKS
SCALE 1:500

EQUIPMENT:

TEST – TEST PUSH BUTTON MOUNTED ON THE DISTRIBUTION BOARD ESCUTCHEON.

RESET – RESET PUSH BUTTON MOUNTED ON THE DISTRIBUTION BOARD ESCUTCHEON.

LAMP – AMBER TEST INDICATING LAMP MOUNTED ON THE DISTRIBUTION BOARD ESCUTCHEON.

Ta – ADJUSTABLE 0-3 HOUR TIMED RELAY.

Tb – 15 MINUTE RUN-ON TIMER TO OPERATE UPON THE RETURN OF MAINS POWER.

Cx – CONTACTOR x.

CRx – CONTROL RELAY x.

Rx – RELAY x.

THE COPYRIGHT OF THIS DRAWING REMAINS THE PROPERTY OF THE ELECTRICAL DESIGN GROUP.

USE FIGURED DIMENSIONS IN PREFERENCE TO SCALE.

ALL DIMENSIONS TO BE VERIFIED ONSITE.

A	PRELIMINARY	20/02/2025
REV:	DESCRIPTION:	DATE:

ELECTRICAL DESIGN GROUP
ELECTRICAL BUILDING SERVICES CONSULTANTS

BRISBANE: P.O. Box 15 Sherwood Qld 4075
Phone: (07) 3278 4375
Email: brisbane@edg.net.au
Web: www.edg.net.au

ELECTRICAL DESIGN GROUP BRISBANE PTY LTD
ACN 092 710 793

TRADING AS:
ELECTRICAL DESIGN GROUP

PROJECT:

**CAPALABA SPORTS CLUB
MULTI-STOREY CARPARK**

SITE ADDRESS:

113 NEY ROAD, CAPALABA

SCALE:

1:500 UNO

SHEET SIZE:

AT A1

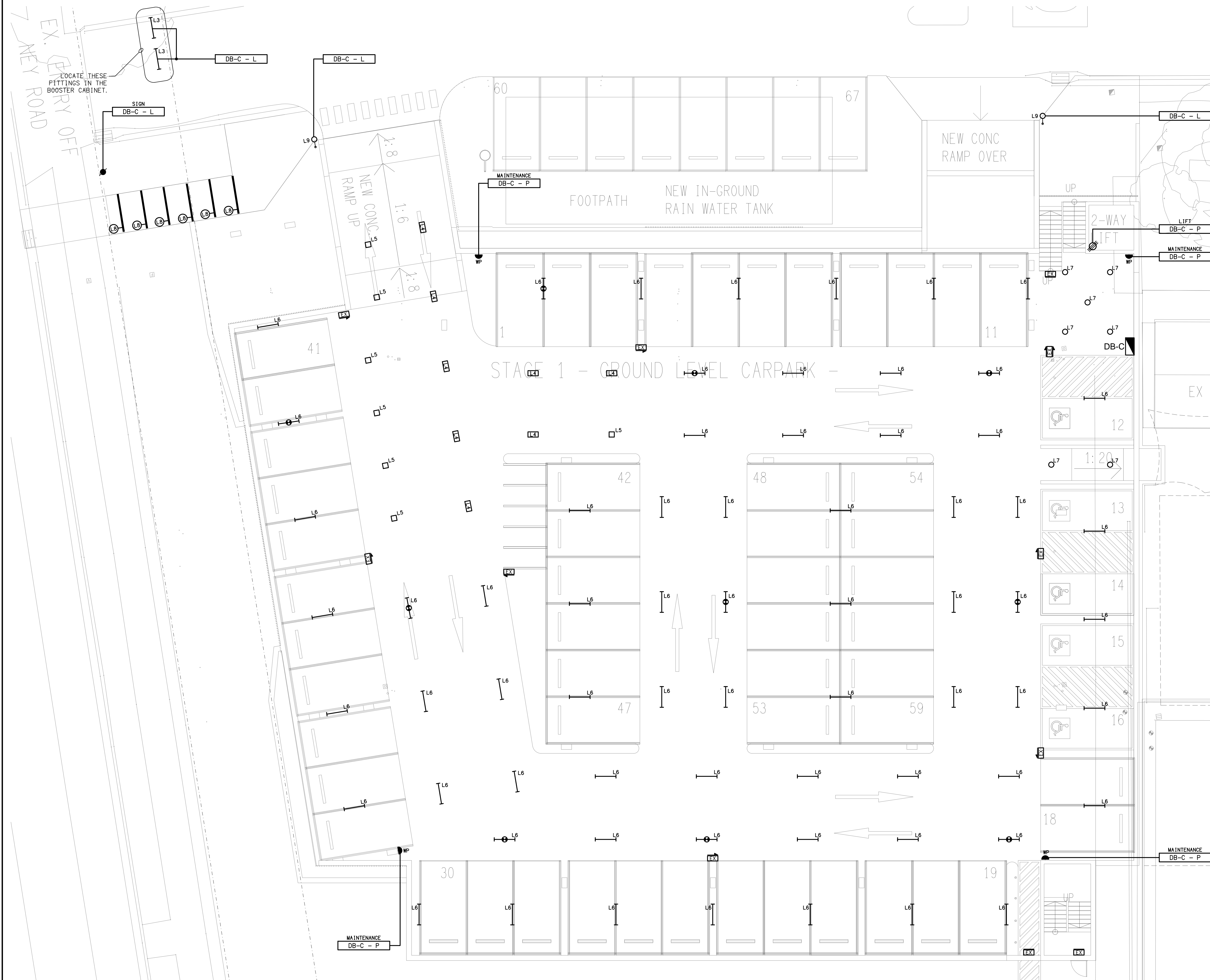
DRAWING TITLE:

**ELECTRICAL SERVICES
LEGEND & SITE PLAN**

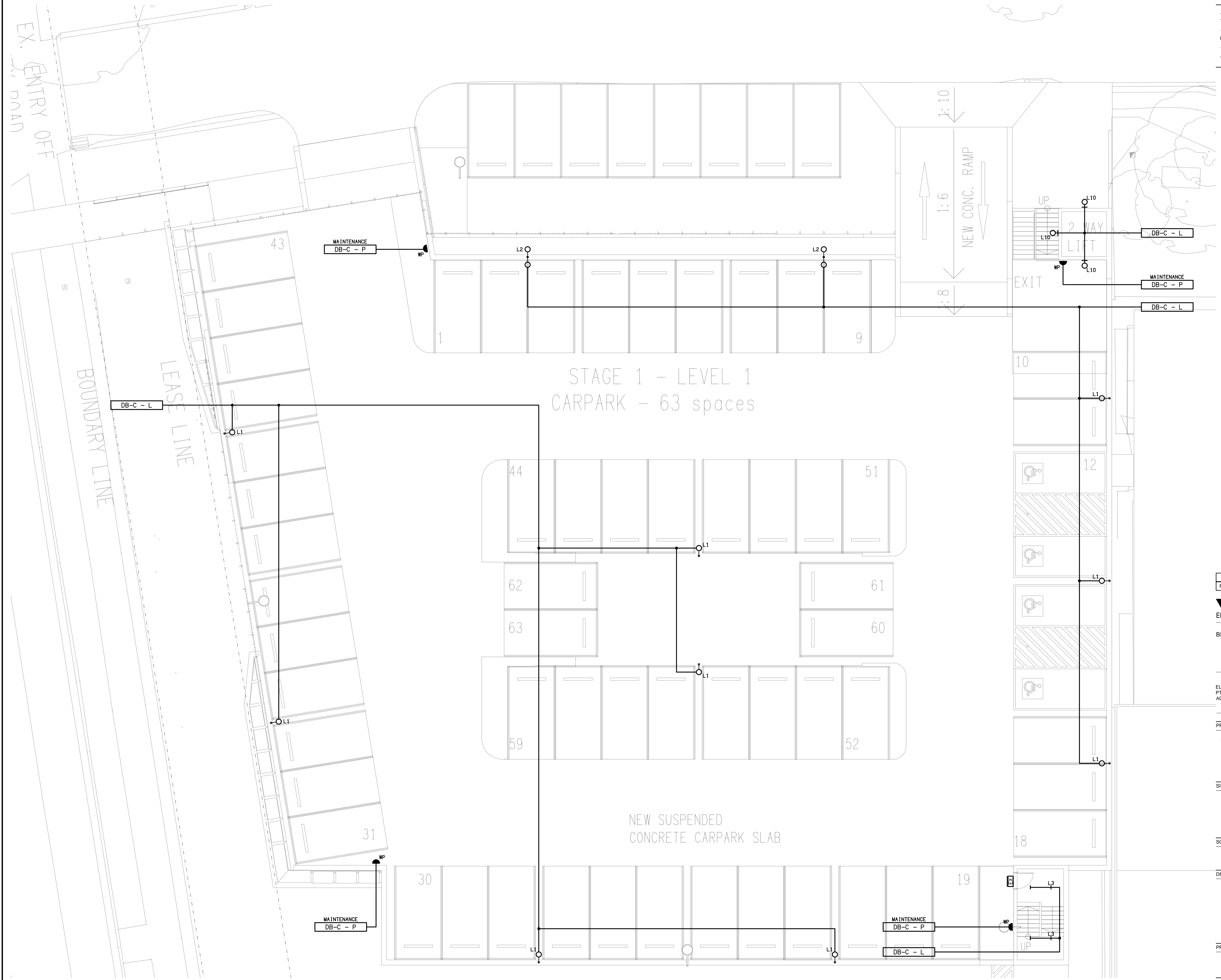
PROJECT NO: DRAWING NO: REVISION:

C3455a E01 A

ALL DIMENSIONS TO BE VERIFIED ONSITE.



C3455a E02 A



A	PRELIMINARY	20/02/2025
REV:	DESCRIPTION:	DATE:

ELECTRICAL DESIGN GROUP
ELECTRICAL BUILDING SERVICES CONSULTANTS

BRISBANE: P.O. Box 15, Sherwood Qld 4075
Phone: (07) 3278 4375
Email: brisbane@edg.net.au
Web: www.edg.net.au

ELECTRICAL DESIGN GROUP BRISBANE PTY LTD
ACN 092 710 793

TRADING AS:
ELECTRICAL DESIGN
GROUP

PROJECT:

**CAPALABA SPORTS CLUB
MULTI-STOREY CARPARK**

SITE ADDRESS:

113 NEY ROAD, CAPALABA

SCALE: SHEET SIZE:

1:100 UNO AT A1

DRAWING TITLE:

**ELECTRICAL SERVICES
LEVEL 1 PLAN**

PROJECT NO: DRAWING NO: REVISION:

C3455a E03 A

NOTES

1. EXTENT OF WORKS

THE ELECTRICAL SERVICES SUB-CONTRACT INCLUDES BUT IS NOT LIMITED TO THE FOLLOWING:

- SUPPLY AND INSTALLATION OF ALL COMPONENTS FORMING PART OF THE ELECTRICAL SERVICES.
- CO-ORDINATION.
- INSPECTIONS.
- TESTING AND COMMISSIONING.
- MAINTENANCE.
- CABLING, CABLE SUPPORT SYSTEMS AND ACCESS.
- POWER DISTRIBUTION.
- LIGHTING.
- CABLE ACCESS.
- ALL MINOR COMPONENTS AND INCIDENTAL WORKS NOT SPECIFICALLY REFERRED TO, HOWEVER NECESSARY TO COMPLETE THE ELECTRICAL SERVICES INSTALLATION SUCH THAT IT IS HANDED OVER COMPLETE, OPERATIONAL AND FIT FOR THE INTENDED USE.

PRIOR TO COMMENCING WORK CONSULT SITE MANAGEMENT FOR ANY HAZARDOUS MATERIAL AND OR ASBESTOS REGISTERS AS WELL AS UNDERTAKE A THOROUGH INSPECTION OF THE SITE TO IDENTIFY ANY POTENTIAL HAZARDOUS MATERIALS, ASBESTOS AND HEALTH OR SAFETY RISKS. ADVISE THE CONTRACTOR OF ANY POTENTIAL HAZARDOUS MATERIALS, ASBESTOS AND HEALTH OR SAFETY RISKS IF IDENTIFIED AND DO NOT COMMENCE WORK UNTIL AN APPROPRIATE MANAGEMENT PLAN HAS BEEN DEVELOPED AND AGREED TO BY ALL PARTIES.

SUPPLY ALL LABOUR, MATERIALS, EQUIPMENT, AND ALL OTHER ITEMS, WHETHER MENTIONED IN DETAIL OR NOT, REQUIRED FOR THE SATISFACTORY COMPLETION OF THE ELECTRICAL SERVICES INSTALLATION, LEAVING IN FULL WORKING ORDER TO THE SATISFACTION OF THE PROJECT MANAGER.

ACCEPT FULL RESPONSIBILITY FOR LIASING, ARRANGING AND CO-ORDINATION ALL WORKS THAT HAVE AN EFFECT ON OR WILL BE AFFECTED BY THE ELECTRICAL SERVICES.

REMOVE ALL OF THE EXISTING ELECTRICAL SERVICES THAT BECOME REDUNDANT DUE TO THE WORKS.

2. WORKMANSHIP

ENSURE THAT THE WORK IS PERFORMED BY THE HOLDER OF A CURRENT ELECTRICAL SUB CONTRACTOR LICENSE. ENSURE THE INSTALLATION AND ALL COMPONENTS, FIXTURES, FITTINGS, OUTLETS AND CABLES ARE SUPPLIED AND INSTALLED TO A HIGH STANDARD THROUGHOUT, AND INSTALLED IN A NEAT AND TRADESMAN LIKE MANNER, TO THE CURRENT INDUSTRY STANDARDS. ENSURE ALL MATERIALS AND COMPONENTS OF A SIMILAR TYPE ARE OF THE SAME MANUFACTURER AND INSTALLED IN A UNIFORM MANNER.

IT IS THE ELECTRICAL SUB CONTRACTOR’S RESPONSIBILITY TO ENSURE THAT THE INSTALLATION IS FIT FOR PURPOSE AND IS PROVIDED AS A COMPLETE WORKING INSTALLATION. IT IS THE ELECTRICAL SUB CONTRACTOR’S RESPONSIBILITY TO PROVIDE ALL COMPONENTS, FITTINGS, FIXTURES, SYSTEMS, PROGRAMMING ETC IRRESPECTIVE OF THE LEVEL DETAILED IN THE DOCUMENTS SUCH THAT THE INSTALLATION IS PROVIDED AS A COMPLETE WORKING INSTALLATION.

CONCEAL ALL WIRING AND CONDUITS. EXPOSED CABLING OR CONDUITS ARE GENERALLY NOT ACCEPTABLE. IT IS NOTED THAT CHASING AND REINSTATEMENT WILL BE REQUIRED. ENSURE ALL COMPONENTS, EQUIPMENT AND MATERIALS SUPPLIED ARE NEW, UNUSED, DESIGNED AND SELECTED TO ENSURE SATISFACTORY OPERATION UNDER VARYING ATMOSPHERIC, CLIMATIC, HUMID TROPICAL CONDITIONS WITHOUT DISTORTION AND DETERIORATION IN ANY PART AFFECTING EFFICIENCY AND RELIABILITY OF THE SYSTEMS. DESIGN AND SELECT ALL EQUIPMENT TO PROVIDE THE NECESSARY SAFETY TO HUMAN LIFE AND PROPERTY DURING OPERATION AND MAINTENANCE WITH PARTICULAR ATTENTION GIVEN TO ELECTRICAL SAFETY AND SEGREGATION PRECAUTIONS.

CHECK THE FINISHED PAINTWORK AROUND THE AREA OF EACH INSTALLATION AND TOUCH UP ALL DAMAGED PARTS AND FINISHES AFTER THE INSTALLATION OF THE ELECTRICAL SERVICES.

ALL WORKS ARE TO BE CARRIED OUT IN ACCORDANCE WITH THE BUILDER’S PROGRAM. ENSURE ALL FINAL LOCATIONS OF OUTLETS AND FITTINGS ARE CO-ORDINATED ONSITE WITH THE ARCHITECT AND ALL OTHER SERVICES, TO THE APPROVAL OF THE PROJECT MANAGER. ALLOW TO CO-ORDINATE THE FINAL LOCATION OF ALL EQUIPMENT, FITTINGS, & OUTLETS, SUCH THAT THEY ARE INSTALLED IN ACCORDANCE WITH THE AS3000 RESTRICTED ZONES, AND ARE NOT COVERED INAPPROPRIATELY.

ENSURE THAT ALL METAL SURFACES ARE SUITABLY PROTECTED AGAINST CORROSION, AND THAT ALL PLASTIC MATERIALS ARE UV STABILISED.

PROVIDE ALL MATERIALS AS NEW, AND OF THE HIGHEST CLASS AVAILABLE FOR THEIR RESPECTIVE TYPES. ENSURE ALL ASPECTS OF THE WORK ARE OF A HIGH STANDARD THROUGHOUT, AND INSTALLED IN A NEAT AND TRADESMAN LIKE MANNER, TO THE CURRENT INDUSTRY STANDARDS.

3. STANDARDS

IRRESPECTIVE OF INFORMATION CONTAINED IN THE ELECTRICAL SERVICES DOCUMENTS OR IN INSTRUCTIONS, IT IS THE ELECTRICAL SUB CONTRACTOR’S RESPONSIBILITY TO ENSURE ALL ELECTRICAL SERVICES WORKS ARE INSTALLED IN ACCORDANCE WITH THE REQUIREMENTS OF THE FOLLOWING. REFER ANY DISCREPANCIES BETWEEN THE REQUIREMENTS OF THE FOLLOWING AND/OR THE ELECTRICAL SERVICES DOCUMENTS AND INSTRUCTIONS TO THE ARCHITECT FOR CLARIFICATION PRIOR TO THE PLACING OF ORDERS, FABRICATION OR INSTALLATION OF THE ITEMS/METHODS IN DISCREPANCY.

- NCC BUILDING CODE OF AUSTRALIA.
- ELECTRICITY ACT.
- ELECTRICAL SAFETY ACT.
- AS/NZS3000.
- AS3008.
- WORKPLACE HEALTH AND SAFETY ACT.
- TELECOMMUNICATIONS ACT.
- ACMA REQUIREMENTS.

4. AUTHORITIES

ENSURE ALL OF THE ELECTRICAL SERVICES COMPLY WITH THE REQUIREMENTS OF ALL REGULATORY AUTHORITIES HAVING JURISDICTION OVER THE SITE INCLUDING BUT NOT LIMITED TO THE FOLLOWING:

- ACMA.
- LOCAL COUNCIL.
- LOCAL SUPPLY AUTHORITY.
- STATE GOVERNMENT DEPARTMENT OF ENVIRONMENT AND HERITAGE.
- QLD GOVERNMENT, DIVISION OF WORKPLACE, HEALTH AND SAFETY.
- QLD FIRE AND RESCUE AUTHORITY.

5. CABLES

UNLESS OTHERWISE SPECIFIED, INSTALL AND TERMINATE CABLES IN ACCORDANCE WITH THE MANUFACTURERS’ RECOMMENDATIONS. DETERMINE THE FINAL ROUTES TO SUIT THE BUILDING STRUCTURE AND SITE CONDITIONS. UNLESS NOTED OTHERWISE, PROVIDE ALL 240 VOLT POWER AND LIGHTING WIRING AS 2.5mm² TWIN & EARTH STRANDED COPPER CONDUCTORS, PVC INSULATED 0.6/1kV V75 GRADE TO AS3174, PROTECTED BY A 20 AMP CIRCUIT BREAKER. ALL CONDUIT AND FITTINGS TO BE RIGID UPVC TO AS2053, UNLESS NOTED OTHERWISE.

NOTES

6. POWER DISTRIBUTION

THE POWER DISTRIBUTION COMPONENT OF THIS CONTRACT INCLUDES PROVIDING A NEW DISTRIBUTION BOARD DB-C TO ACCOMMODATE THE NEW CARPARK CIRCUITS. PROVIDE A NEW 160 AMP MCCB IN THE MSB TO SUPPLY DB-C VIA A NEW 4c+E 70MM CU XLPE/PVC SUBMAIN. THE POWER DISTRIBUTION COMPONENT OF THIS CONTRACT INCLUDES, BUT IS NOT LIMITED TO THE FOLLOWING EXTENT OF WORK:

- POWER DISTRIBUTION.
- MSB MCCB AND UPDATED LABELLING.
- DISTRIBUTION BOARD DB-C AND A WEATHERPROOF HAT SECTION.
- DB-C SUBMAIN.
- MODIFICATION OF THE EXISTING SHELVING TO ACCOMMODATE THE NEW DISTRIBUTION BOARD.
- EARTHING.
- REMOVAL OF EXISTING REDUNDANT CIRCUITS.
- CIRCUITS.
- ISOLATORS AND OUTLETS.
- TESTING AND COMMISSIONING.

PROVIDE THE DISTRIBUTION BOARD AS FOLLOWS:

- WALL MOUNTED.
- IP66 FORM 1.
- LIGHT GREY ENCLOSURE WHITE ESCUTCHEON.
- 3 POINT 92268 KEY LOCKABLE FLUSH HANDLES ON ALL DOORS.
- LIFT OFF HINGES ON ALL DOORS AND ESCUTCHEONS.
- 1/4 TURN LATCHES AND D HANDLES ON ALL ESCUTCHEONS.
- ALL SWITCHGEAR TO BE SCHNEIDER OR NHP/ TERASAKI.
- PROVIDE SHOP DRAWINGS FOR APPROVAL.
- ALL COMPONENTS ARE TO BE LABELLED WITH NON-STICK LABELS.

ENSURE THAT POWER IS MAINTAINED TO THE REMAINING PARTS OF THE SITE THAT ARE NOT PART OF THE WORKS BETWEEN 8.00AM AND 2.00AM. ANY INTERRUPTIONS TO THE POWER SUPPLY MUST BE LIMITED TO LESS THAN FOUR HOURS AND THE CLUB MUST BE PROVIDED WITH TWO WEEKS NOTICE PRIOR TO THE INTERRUPTION.

7. LIGHTING

ALL OF THE LIGHT FITTINGS, LAMPS AND ACCESSORIES ARE TO BE PROVIDED AS PART OF THIS CONTRACT. THE LIGHTING COMPONENT OF THIS CONTRACT INCLUDES, BUT IS NOT LIMITED TO THE FOLLOWING EXTENT OF WORK:

- LIGHTING.
- LIGHT FITTINGS AND ACCESSORIES.
- LAMPS.
- EARTHING OF THE LIGHTING INSTALLATION.
- LIGHTING CONTROL.
- LIGHTING SUBCIRCUITS.
- TESTING AND COMMISSIONING.

8. LIGHT POLES

PROVIDE POLES WITH A TAMPER RESISTANT ACCESS PANEL WITHIN THE POLE BASE AND BASE PLATE THAT INCORPORATE A MINIMUM OF FOUR HOLD DOWN BOLTS. PROVIDE POLES AND INSITU CONCRETE FOOTINGS DESIGNED SPECIFICALLY TO SUIT THE LOCAL CONDITIONS AND BE ABLE TO WITHSTAND WIND GUSTS OF 150KM/H. THE DESIGN OF THE POLE AND THE FOOTING IS TO BE UNDERTAKEN BY A RESISTED STRUCTURAL ENGINEER. PROVIDE A CERTIFICATE FROM THE STRUCTURAL ENGINEER INDICATING THE POLES AND FOOTINGS MEET THE SPECIFIED DESIGN CRITERIA. PROVIDE DETAILED DRAWINGS OF ALL POLES AND FOOTINGS FOR APPROVAL. PROVIDE A FUSED CONNECTION WITHIN EACH POLE LOCATED BEHIND THE POLE BASE ACCESS PANEL. CONNECT THE POLE TO THE ELECTRICAL EARTH VIA A LUG FIXED TO A STUD WELDED TO THE POLE LOCATED WITHIN THE POLE LOCATED BEHIND THE POLE BASE ACCESS PANEL. TRIM THE HOLD DOWN BOLTS SUCH THAT THEY DO NOT PROTRUDE MORE THAN 15MM ABOVE THE NUT. TREAT THE TRIMMED HOLD DOWN BOLT AGAINST CORROSION AND ENSURE IT DOES NOT CONTAIN SHARP EDGES THAT REPRESENT A HAZARD. ENSURE THE BASE PLATE IS BETWEEN 50 AND 100MM ABOVE THE FINISHED LANDSCAPE LEVEL. PROVIDE A NEAT SMOOTH FINISHED CONCRETE GROUT FILL UNDER THE BASE PLATE ENSURING ANY SPLATTER IS IMMEDIATELY WASHED OFF THE BASE PLATE AND POLE. EXTEND THE CONDUIT INTO THE POLE 50MM ABOVE THE BASE PLATE.

PROVIDE POLES THAT COMPLY WITH AS/NZS 1170.0 STRUCTURAL DESIGN ACTIONS PART 0: GENERAL PRINCIPLES – IMPORTANCE LEVEL 1 WITH A DESIGN WORKING LIFE OF 50 YEARS.

DESIGN THE POLES TO A WIND LOADING AS PER AS/NZS 1170.0 STRUCTURAL DESIGN ACTIONS PART 0: GENERAL PRINCIPLES. THE FRACTION OF CRITICAL DAMPING IS TO BE TAKEN AS 0.05 (ULTIMATE) AND 0.01 (SERVICEABILITY) FOR POLES WITH MORE THAN TWO- (2) OVERLAPS AND 0.02 (ULTIMATE) AND 0.005 (SERVICEABILITY) FOR ALL OTHERS. THE NATURAL FREQUENCY OF THE POLE IS TO BE CALCULATED CONSIDERING VARYING DIAMETERS AND THICKNESS OVER THE HEIGHT OF THE POLE AND USING A 1.1 SAFETY FACTOR FOR THE MASS AT THE TOP OF THE POLE. ENSURE POLE DEFLECTION AT SERVICEABILITY WIND SPEEDS HAVE A DEFLECTION LESS THAN 6.7%.

ENSURE ALL WELDS ARE BY A CONTINUOUS AUTOMATIC GAS SHIELDED ELECTRIC ARC PROCESS COMPLYING WITH THE RELEVANT PARTS OF AS/NZS 1554 STRUCTURAL STEEL WELDING. ENSURE THE LONGITUDINAL SEAM WELDS ON POLE SECTIONS CONFORMS TO GP STANDARDS WHILE BASEPLATE AND SPIGOT WELDS MUST CONFORM TO SP STANDARDS AS MENTIONED IN AS/NZS 1554. WELD SIZES ARE TO BE VERIFIED BY A QUALIFIED STRUCTURAL ENGINEER AND SPECIFIED IN THE ENGINEERING REPORT AND ON WORKSHOP DRAWINGS.

PROVIDE ALL POLES WITH A GALVANISED FOUNDATION BOLT ASSEMBLY COMPLETE WITH POSITIONING TEMPLATE AND TWO- (2) NUTS AND WASHERS PER BOLT PROVIDED TO SUIT THE POLE BASEPLATE. FOUNDATION BOLTS MUST BE MANUFACTURED FROM DEFORMED REINFORCING BARS WITH A NOMINAL YIELD STRESS OF 500 MPA. PROVIDE BOLTS THREADED IN ACCORDANCE WITH AS1275-1985 METRIC SCREW THREADS FOR FASTENERS AND FITTED WITH CLASS 5 NUTS IN ACCORDANCE WITH AS/NZS 1112 ISO METRIC HEXAGON NUTS. FOUNDATION BOLTS MUST BE TIED TO A SUITABLE REINFORCING CAGE. THE LENGTH OF EACH FOUNDATION BOLT MUST ALLOW FOR THE LENGTH OF THE THREAD ABOVE GROUND, A MINIMUM OF 100MM COVER AND A DEVELOPMENT LENGTH IN ACCORDANCE WITH AS3600-1994 CONCRETE STRUCTURES, TABLE 13.1.2.(A). THE UNDERSIDE OF THE BASEPLATE IS TO BE GROUTED.

THE SECTION CAPACITY OF THE POLE IS TO BE ANALYSED OVER A MINIMUM OF 100 INCREMENTS ACCORDING TO AS4100 STEEL STRUCTURES AND AS/NZS 4600 COLD-FORMED STEEL STRUCTURES. LUMINARIES ARE TO BE ACCESSED BY EXTERNAL MACHINERY E.G. CHERRY PICKERS. . CLIMBING RUNGS AND MAINTENANCE PLATFORMS ARE NOT REQUIRED.

THE POLE AND ALL STEEL ACCESSORIES ARE TO BE POWDER COATED BLACK HOT DIP GALVANIZED AFTER FABRICATION IN ACCORDANCE WITH AS/NZS 4680 HOT-DIP GALVANIZED (ZINC) COATINGS ON FABRICATED FERROUS ARTICLES.

THE POLES ARE TO BE SANDED AFTER GALVANIZING AND PREHEATED TO 220°C TO DRIVE OFF ANY TRAPPED GAS UNDER THE GALVANIZED SURFACE. A ZINC RICH PRIME COAT INTERPON POLYZINC 660 OR EQUIVALENT SHALL BE APPLIED TO WITHIN 60mm AND 80mm WITHIN FOUR HOURS OF PREHEATING AND GREEN CURED TO 200°C FOR 3 MINUTES. PRIME COAT SHALL BE LIGHTLY SANDED BEFORE APPLICATION OF TOP COAT. COLOUR TOPCOAT SHALL BE A RIPPLE, HIGH BUILD FINISH TO WITHIN 50µm AND 70µm. ENSURE ALL MANUFACTURING TOLERANCES ARE IN ACCORDANCE WITH AS 1798 LIGHTING POLES AND BRACKET ARMS PREFERRED DIMENSIONS. IN PARTICULAR THE POLES SHALL BE CHECKED FOR COMPLIANCE WITH THE STRAIGHTNESS REQUIREMENTS OF THIS STANDARD: 0.3% OF HEIGHT.

ASSEMBLY AND ERECTION ARE TO BE CARRIED OUT ONLY BY QUALIFIED RIGGING PERSONNEL. GROUT THE UNDERSIDE OF ALL POLE BASEPLATES WITHIN SEVEN- (7) DAYS OF INSTALLING THE POLE.

9. ABBREVIATIONS

A – AMP CURRENT RATING
AB – MOUNT ABOVE BENCH.
AFFL – ABOVE FINISHED FLOOR LEVEL.
BB – MOUNT BELOW BENCH.
BH – MOUNT ON BULKHEAD.
CEIL – MOUNT ON CEILING.
CS – MOUNT WITHIN CEILING SPACE.
C/W – COMPLETE WITH.
RCBO – CIRCUIT PROTECTED VIA A 30mA RESIDUAL CURRENT DEVICE INTEGRAL TO THE CIRCUIT BREAKER. 3-PHASE RCBO TO BE 4-POLE.
REF – REFRIGERATOR.
SUS – MOUNT SUSPENDED FROM CEILING.
UNO – UNLESS NOTED OTHERWISE.
WP – WEATHERPROOF TO IP56 UNO.
500 – NUMBER DENOTES MOUNTING HEIGHT AFFL.

THE COPYRIGHT OF THIS DRAWING REMAINS THE PROPERTY OF THE ELECTRICAL DESIGN GROUP.		
USE FIGURED DIMENSIONS IN PREFERENCE TO SCALE.		
ALL DIMENSIONS TO BE VERIFIED ONSITE.		

A	PRELIMINARY	20/02/2025
REV:	DESCRIPTION:	DATE:

 **ELECTRICAL DESIGN GROUP**
ELECTRICAL BUILDING SERVICES CONSULTANTS

BRISBANE: P.O. Box 15, Sherwood Qld 4075
Phone: (07) 3278 4375
Email: brisbane@edg.net.au
Web: www.edg.net.au

ELECTRICAL DESIGN GROUP BRISBANE PTY LTD
ACN 092 710 793

TRADING AS:
ELECTRICAL DESIGN GROUP

PROJECT:

CAPALABA SPORTS CLUB
MULTI-STOREY CARPARK

SITE ADDRESS:

113 NEY ROAD, CAPALABA

SCALE: SHEET SIZE:

NOT TO SCALE AT A1

DRAWING TITLE:

ELECTRICAL SERVICES
NOTES

PROJECT NO: DRAWING NO: REVISION:

C3455a E04 A