



ELECTRICAL DESIGN GROUP

ELECTRICAL BUILDING SERVICES CONSULTANTS

P.O. Box 15, SHERWOOD Q. 4075

Phone: (07) 3278 4375

Website: www.edg.net.au Email: brisbane@edg.net.au

C3543a - ISA HOTEL - GAMING ROOM UPGRADE

C3543a-0001(A).xls

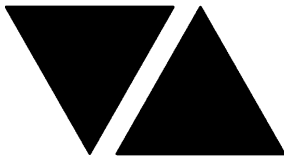
ELECTRICAL SERVICES CONTRACT DOCUMENT SCHEDULE

REVISION A - 02 DECEMBER 2025

ISSUING INFORMATION				DATE OF ISSUE									
	DAY MONTH YEAR REASON FOR ISSUE			02									
				12									
				25									
				C									
A = APPROVAL C = CONSTRUCTION N = COORDINATION P = PRELIMINARY T = TENDER													

DISTRIBUTION				NUMBER OF COPIES									
WWW.EDG.NET.AU				1E									
VINTA GROUP				1E									
V ARCHITECTURE				1E									
P = PRINT T = TRACING D = DISC E = EMAIL F = FAX													

DOCUMENTS				REVISION									
C3543a-E01.dwg	LEGEND & DETAILS			A									
C3543a-E02.dwg	FLOOR PLAN			A									
C3543a-E03.dwg	REFLECTED CEILING PLAN			A									
C3543a-E04.dwg	NOTES			A									
C3543a-0001.xls	CONTRACT DOCUMENT SCHEDULE			A									
C3543a-0002.xls	EQUIPMENT SCHEDULE			A									
C3543a-0004.xls	DISTRIBUTION BOARD SCHEDULE DB-2A			A									
C3543a-0001.zip	FITTING & OUTLET DATASHEETS			A									



ELECTRICAL DESIGN GROUP

ELECTRICAL BUILDING SERVICES CONSULTANTS

P.O. Box 15, SHERWOOD Q. 4075

Phone: (07) 3278 4375 Fax: (07) 3716 0222

Web Site: www.edg.net.au Email: brisbane@edg.net.au

C3543a - ISA HOTEL - GAMING ROOM UPGRADE

C3543a-0002(A).xls

ELECTRICAL EQUIPMENT SCHEDULE

REVISION A - 02 DECEMBER 2025

THE LIGHT FITTING SUPPLIER CONTACT DETAILS MAY BE AVAILABLE ON THE EDG WEBSITE VIA THE FOLLOWING LINK
www.edg.net.au/Links/Lighting.htm

TYPE	LAMPS	DESCRIPTION	COLOUR / ACCESSORY	CATALOGUE No	REV
L01	12W 3000K LED	RECESSED DOWNLIGHT C/W 24 DEG BEAM REMOTE DALI DIMMABLE DRIVER	BLACK	RAPID R1077-WH-12W-WW-DALI BLACK	A
L02	10W 3000K LED	200 DIA WALL LIGHT C/W INTEGRAL DRIVER MOUNTED AS PER THE ARCHITECTURAL ELEVATION	BRASS	LUCCI LEDLUX 197152 EQUINOX 200	A
L03	5W 2700K TE DIMMABLE 240V GX53 LED LAMP PER FITTING	PROVIDE EACH L03 POSITION WITH TWO WALL MOUNTED FITTINGS POSITIONED AS PER THE ARCHITECTURAL ELEVATION	BRASS	2 X LUCCI 239663 CAPE 1 LIGHT WAVE PER LOCATION	A
L04	5W 2700K TE DIMMABLE 240V E27 LED LAMP	DECORATIVE PENDANT WITH THE DROP LENGTH CONFIRMED ON SITE BY THE ARCHITECT	AGED BRASS	LUCCI011698 LEXICON	A
L05	56W 3000K LED	DECORATIVE PENDANT C/W A REMOTE DALI DIMMABLE DRIVE. CONFIRM THE DROP LENGTH ON SITE WITH THE ARCHITECT	BRASS	FORM LIGHTING GEMINI D081 81247281 DALI DIMMABLE DRIVER	A
L06	37W 3000K LED	DECORATIVE PENDANT C/W A REMOTE DALI DIMMABLE DRIVE. CONFIRM THE DROP LENGTH ON SITE WITH THE ARCHITECT	BRASS	FORM LIGHTING WAVES 81345222 DALI DIMMABLE DRIVER	A
L07	14.4W/M 3000K LED	LED STRIP WITHIN A SCREW FIXED EXTRUSION C/W DIFFUSER WITHIN THE CURTAIN PELMET AS PER THE ARCHITECTURAL DETAIL. PROVIDE THE STRIP WITH REMOTE DALI DIMMABLE POWER SUPPLIES AS REQUIRED LOCATE THE POWER SUPPLIES IN A CONCEALED ACCESSIBLE POSITION NOTED ON THE AS CONSTRUCTED DOCUMENTS.	NATURAL	RAPID LED R2334 PLUS ALUMINIUM EXTRUSION AND POWER SUPPLY & DALI CONTROLLER	A
L08	5W 3000K LED	GARDEN ELV SPIKE LIGHT. PROVIDE EACH GROUP OF GL01 FITTINGS WITH A REMOTE COMMON DALI DIMMABLE DRIVER. LOCATE DRIVER /POWER SUPPLY IN A CONCEALED ACCESSIBLE POSITION NOTED ON THE AS CONSTRUCTED DOCUMENTS.	BLACK	EQUAL TO GAMMA ILLUMINATION RULOJ 885102	A
L09	15W 3000K LED	RECESSED DOWNLIGHT C/W 24 DEG BEAM REMOTE DALI DIMMABLE DRIVER	BLACK	RAPID R1076-BK-15W-DALI-WW-60	A
L10	15W 3000K LED	RECESSED DOWNLIGHT C/W 24 DEG BEAM REMOTE DALI DIMMABLE DRIVER PROVIDE TIMBER INFILLS TO MATCH THE CEILING FEATURE TO CREATE A FLAT SQUARE AREA TO ALLOW THE E2 TO BE MOUNTED INTO.	BLACK	RAPID R1076-BK-15W-DALI-WW-60	A
L11	24W 4000K LED	SUSPENDED / SURFACE MOUNTED IP65 BATTEN C/W INTEGRAL DRIVER	NA	RAPID LED R3540-TRI	A



ELECTRICAL DESIGN GROUP

ELECTRICAL BUILDING SERVICES CONSULTANTS

P.O. Box 15, SHERWOOD Q. 4075

Phone: (07) 3278 4375 Fax: (07) 3716 0222

Web Site: www.edg.net.au Email: brisbane@edg.net.au

C3543a - ISA HOTEL - GAMING ROOM UPGRADE

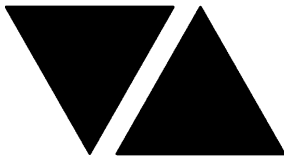
C3543a-0002(A).xls

ELECTRICAL EQUIPMENT SCHEDULE

REVISION A - 02 DECEMBER 2025

THE LIGHT FITTING SUPPLIER CONTACT DETAILS MAY BE AVAILABLE ON THE EDG WEBSITE VIA THE FOLLOWING LINK
www.edg.net.au/Links/Lighting.htm

TYPE	LAMPS	DESCRIPTION	COLOUR / ACCESSORY	CATALOGUE No	REV
E1	LED	EMERGENCY LIGHT: RECESSED NON-MAINTAINED EMERGENCY LIGHT. AS2293 CLASSIFICATION C0-D40 - C90-D40.	BLACK	CLEVERTRONICS LLIFEBLK	A
E2	LED	EMERGENCY LIGHT: RECESSED NON-MAINTAINED EMERGENCY LIGHT. AS2293 CLASSIFICATION C0-D40 - C90-D40. PROVIDE TIMBER INFILLS TO MATCH THE CEILING FEATURE TO CREATE A FLAT SQUARE AREA TO ALLOW THE E2 TO BE MOUNTED INTO.	BLACK	CLEVERTRONICS LLIFEBLK	A
EX	LED	EXIT LIGHT: MAINTAINED 24M VIEWING DISTANCE EXIT LIGHT C/W DIFFUSERS & DIRECTIONAL ARROWS AS SHOWN. CEILING SURFACE MOUNT OR WALL MOUNT BETWEEN 2100mm & 2700mm AFFL IF THERE IS NO VERTICAL SURFACE TO MOUNT THE FITTING ON WITHIN THIS RANGE CONFIRM THE MOUNTING HEIGHT WITH THE ENGINEER. AS2293 CLASSIFICATION C0-D1.25- C90-D2	BLACK	CLEVERTRONICS LUBPRO-SM-BLK	A
CHANNEL x		CONTROL CHANNEL WITH A NUMERICAL REFERENCE. REFER TO THE POWER AND LIGHTING CONTROL SCHEMATIC / SCHEDULE			A
MANUAL TRAILING EDGE POT DIMMER (TE)		MANUAL PHASE CUT TRAILING EDGE 450 VA POT DIMMER C/W.	WHITE	CLIPSAL 32E450UDM-WE	A
MANUAL DALI POT DIMMER (DALI)		MANUAL DALI POT DIMMER C/W REQUIRED POWER SUPPLY. FACTORY SET POWER ON RETURN TO LAST LEVEL.	WHITE	CLIPSAL DCDAL31M2PB	A
LIGHT SWITCH PANEL 1 (SP1)		MULTI GANG LIGHT SWITCH PANELS C/W ONE WAY LIGHT SWITCHES AND POT DIMMERS AS PER THE LIGHTING CONTROL SCHEMATIC MOUNTED AT 1000mm AFFL UNLESS NOTED OTHERWISE.	WHITE	CLIPSAL C2000 SERIES 30USM	A
SINGLE POWER OUTLET		SINGLE POWER OUTLET C/W CIRCUIT IDENTIFICATION ON THE FACEPLATE BEHIND THE SURROUND MOUNT AT 300mm AFFL U.N.O. RATING 10A U.N.O.	WHITE UNLESS NOTED AS BLACK (BK)	CLIPSAL C2000 SERIES	A
SINGLE POWER OUTLET AUTO DOOR (AD)		SINGLE POWER OUTLET C/W CIRCUIT IDENTIFICATION ON THE FACEPLATE BEHIND THE SURROUND MOUNTED WITHIN THE AUTO DOOR MULION SO THE CABLING IS CONCEALED. RATING 10A U.N.O.	WHITE	CLIPSAL C2000 SERIES	A
DOUBLE POWER OUTLET		DOUBLE POWER OUTLET C/W CIRCUIT IDENTIFICATION ON THE FACEPLATE BEHIND THE SURROUND MOUNT AT 300mm AFFL U.N.O. RATING 10A U.N.O.	WHITE UNLESS NOTED AS BLACK (BK)	CLIPSAL C2000 SERIES	A



ELECTRICAL DESIGN GROUP

ELECTRICAL BUILDING SERVICES CONSULTANTS

P.O. Box 15, SHERWOOD Q. 4075

Phone: (07) 3278 4375 Fax: (07) 3716 0222

Web Site: www.edg.net.au Email: brisbane@edg.net.au

C3543a - ISA HOTEL - GAMING ROOM UPGRADE

C3543a-0002(A).xls

ELECTRICAL EQUIPMENT SCHEDULE

REVISION A - 02 DECEMBER 2025

THE LIGHT FITTING SUPPLIER CONTACT DETAILS MAY BE AVAILABLE ON THE EDG WEBSITE VIA THE FOLLOWING LINK
www.edg.net.au/Links/Lighting.htm

TYPE	LAMPS	DESCRIPTION	COLOUR / ACCESSORY	CATALOGUE No	REV
SIGN CONNECTION		COORDINATE THE LOCATION AND CONNECTION WITH THE SIGN CONTRACTOR ENSURING THE GPO / ISOLATORS ARE PROVIDED WITH APPROPRIATE WEATHER PROTECTION AND ARE CONCEALED FROM VIEW.			A
COMMUNICATIONS RACK (CR-1)		EXISTING AV RACK			A
COMMUNICATIONS RACK (CR-2)		EXISTING COMMUNICATIONS RACK TO BE UPGRADED AS REQUIRED TO ACCOMMODATE THE ADDITIONAL / MODIFIED COMMUNICATIONS SERVICES. ALL SERVICES MADE REDUNDANT BY THE WORKS NEED TO BE REMOVED. UPDATE THE OUTLET / PORT NUMBERING AT PRACTICAL COMPLETION.			A
COMMUNICATIONS OUTLET		RJ45 CAT-6 COMMUNICATIONS OUTLET, CABLED BACK TO CR-1 WITH NEW CAT 6 PATCH PANELS AS REQUIRED VIA 4-PAIR CAT-6 UTP CABLE. MOUNT UP TO 3 RJ45 OUTLETS PER MULTI-GANG FACEPLATE WITH SEPARATE PERMANENT LABELLING FOR EACH OUTLET. MOUNT AT 300 AFFL. UNLESS NOTED OTHERWISE	WHITE UNLESS NOTED AS BK (BLACK)	CLIPSAL "C2000 SERIES"	A
CAT 6 GAMING OUTLET		RJ45 CAT-6 COMMUNICATIONS OUTLET, CABLED BACK TO A CAT 6 PATCH PANEL WITHIN THE GAMING RACK VIA 4-PAIR CAT-6 UTP CABLE. MOUNT UP TO 4 RJ45 OUTLETS PER MULTI-GANG FACEPLATE WITH SEPARATE PERMANENT LABELLING FOR EACH OUTLET.	WHITE	CLIPSAL "C2000 SERIES"	A
GAMING FIBRE (GF)		INSTALL DUPLEX FIBRE OPTIC CABLE BETWEEN THE POKER MACHINE BASES AND FROM THE POKER MACHINE BASES BACK TO THE GAMING RACK AS INDICATED. THE DUPLEX FIBRE OPTIC CABLE WILL BE SUPPLIED AND TERMINATED BY OTHERS.			A
MATV OUTLET		MATV OUTLET CONNECTED TO THE EXISTING MATV SYSTEM VIA RG6 CABLE IN STAR CONFIGURATION.	BLACK	CLIPSAL "C2000 SERIES"	A
CCTV CAMERA OUTLET		MALE RJ45 CAT-6 COMMUNICATIONS PLUG PULLED 200MM THROUGH A 20MM DIA CEILING PENETRATION TO BE CONNECTED INTO THE BACK OF A CEILING MOUNT DOME CAMERA A CAT 6 PATCH PANEL WITHIN THE CCTV RACK VIA 4-PAIR CAT-6 UTP CABLE UNIQUELY NUMBERED AT EACH END.			A
BACKGROUND MUSIC SPEAKER		RECESSED 15W BACKGROUND MUSIC SPEAKER C/W A BLACK GRILL CONNECTED TO THE EXISTING GAMING ROOM BACKGROUND MUSIC SYSTEM.			A
DB-2A		UPDATE THE EXISTING DISTRIBUTION BOARD DB-2A AS NECESSARY TO ACCOMMODATE THE CIRCUIT AND CONTROLS AS PER THE DB-2A SCHEDULE AND NOTES. REMOVE ALL SWITCHGEAR MADE REDUNDANT BY THE WORKS AND UPDATE THE SCHEDULE AT PRACTICAL COMPLETION.			A
FIRE INDICATOR PANEL (FDCIE / EWCIE)		BRIGADE MONITORED AS 1670 COMPLAINT FIRE INDICATOR PANEL INCORPORATING THE FDCIE AND EWCIE TO REMAIN AS IS.			A

C3543a-0002(A).xls

Pages inc. any attach. 3 of 4



ELECTRICAL DESIGN GROUP

ELECTRICAL BUILDING SERVICES CONSULTANTS

P.O. Box 15, SHERWOOD Q. 4075

Phone: (07) 3278 4375 Fax: (07) 3716 0222

Web Site: www.edg.net.au Email: brisbane@edg.net.au

C3543a - ISA HOTEL - GAMING ROOM UPGRADE

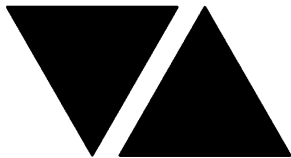
C3543a-0002(A).xls

ELECTRICAL EQUIPMENT SCHEDULE

REVISION A - 02 DECEMBER 2025

THE LIGHT FITTING SUPPLIER CONTACT DETAILS MAY BE AVAILABLE ON THE EDG WEBSITE VIA THE FOLLOWING LINK
www.edg.net.au/Links/Lighting.htm

TYPE	LAMPS	DESCRIPTION	COLOUR / ACCESSORY	CATALOGUE No	REV
AUTO DOOR FIRE ALARM SYSTEM INTERFACE		BY GOLDCOAST FIRE. PROVIDE AN INTERFACE FROM THE FIRE ALARM SYSTEM TO UNLOCK THE AUTO DOOR UPON ALARM.			A
RECESSED FIRE EVACUATION SPEAKER (S1)		BY GOLDCOAST FIRE. RECESSED 5W 8-INCH CONE ALERT AND EVACUATION SPEAKER TO AS1670.1 C/W 100V MULTI-TAP TRANSFORMER AND BLACK FLUSH GRILLE.			A
RECESSED FIRE EVACUATION SPEAKER (S2)		BY GOLDCOAST FIRE. RECESSED 5W 8-INCH CONE ALERT AND EVACUATION SPEAKER TO AS1670.1 C/W 100V MULTI-TAP TRANSFORMER AND BLACK FLUSH GRILLE. PROVIDE TIMBER INFILLS TO MATCH THE CEILING FEATURE TO CREATE A FLAT SQUARE AREA TO ALLOW THE S2 SPEAKER TO BE MOUNTED INTO.			A
FIRE EVACUATION HORN		BY GOLDCOAST FIRE. SURFACE MOUNTED TWO-TONE 30W ALERT AND EVACUATION HORN SPEAKER TO AS1670.1 C/W 100V MULTI-TAP TRANSFORMER. MOUNT AT HIGH LEVEL.			A
SMOKE DETECTOR (S1)		BY GOLDCOAST FIRE. BLACK SURFACE MOUNTED SMOKE DETECTOR TO AS1670.			A
SMOKE DETECTOR (S2)		BY GOLDCOAST FIRE. BLACK SURFACE MOUNTED SMOKE DETECTOR TO AS1670. PROVIDE TIMBER INFILLS TO MATCH THE CEILING FEATURE TO CREATE A FLAT SQUARE AREA TO ALLOW THE S2 DETECTOR TO BE MOUNTED INTO.			A
SMOKE DETECTOR (S3)		BY GOLDCOAST FIRE. WHITE SURFACE MOUNTED SMOKE DETECTOR TO AS1670.			A
CONCEALED SMOKE DETECTOR		BY GOLDCOAST FIRE. CONCEALED SMOKE DETECTOR TO AS1670 C/E REMOTE INDICATOR AND FAMCO ACCESS BRACKET BLACK FACEPLATE			A



ELECTRICAL DESIGN GROUP

ELECTRICAL BUILDING SERVICES CONSULTANTS

P.O. Box 15, SHERWOOD Q. 4075

Phone: (07) 3278 4375 Fax: (07) 3716 0222

Web Site: www.edg.net.au Email: brisbane@edg.net.au

C3543a - ISA HOTEL - GAMING ROOM UPGRADE

C3543a-0004(A).xls

DISTRIBUTION BOARD DB-2A

REVISION A - 02 DECEMBER 2025

							REV
UPGRADE / MODIFY THE EXISTING DISTRIBUTION BOARD DB-2A TO ACCOMMODATE THE FOLLOWING CIRCUITS AND CONTROLS. REMOVE ALL SWITCHGEAR MADE REDUNDANT BY THE WORKS. UPDATE THE SCHEDULE AT PRACTICAL COMPLETION.							A
CIRC	PH	CIRCUIT BREAKER (amps)	CONTROL EQUIPMENT	CABLE SIZE (mm ²)	LOCATION	CIRCUIT USE	
P1	1	20	RCBO	2.5	GAMING	GAMING MACHINE	A
P2	1	20	RCBO	2.5	GAMING	GAMING MACHINE	A
P3	1	20	RCBO	2.5	GAMING	GAMING MACHINE	A
P4	1	20	RCBO	2.5	GAMING	GAMING MACHINE	A
P5	1	20	RCBO	2.5	GAMING	GAMING MACHINE	A
P6	1	20	RCBO	2.5	GAMING	GAMING MACHINE	A
P7	1	20	RCBO	2.5	GAMING	GAMING MACHINE	A
P8	1	20	RCBO	2.5	GAMING	GAMING MACHINE	A
P9	1	20	RCBO	2.5	GAMING	GAMING MACHINE	A
P10	1	20	RCBO	2.5	GAMING	GAMING MACHINE	A
P11	1	20	RCBO	2.5	GAMING	GAMING MACHINE	A
P12	1	20	RCBO	2.5	GAMING	GAMING MACHINE	A
P13	1	20	RCBO	2.5	GAMING	MODEM	A
P14	1	20	RCBO	2.5	GAMING	CLEANING	A
P15	1	20	RCBO	2.5	GAMING	TV	A
P16	1	20	RCBO	2.5	GAMING	TV	A
P17	1	20	RCBO	2.5	GAMING	DISPLAY	A
P18	1	20	RCBO	2.5	GAMING	DISPLAY	A
P19	1	20	RCBO	2.5	GAMING	KIOSK	A
P20	1	20	RCBO	2.5	GAMING	CRT	A
P21	1	20	RCBO	2.5	GAMING	CRT	A
P22	1	20	RCBO	2.5	GAMING	AUTO DOOR	A
L1	1	20	RCBO	2.5	GAMING	LIGHTING	A
L2	1	20	RCBO	2.5	GAMING	LIGHTING	A
L3	1	20	RCBO	2.5	GAMING	LIGHTING	A
L4	1	20	RCBO	2.5	GAMING	SIGNAGE	A
L5	1	20	RCBO	2.5	GAMING	SIGNAGE	A
L6	1	20	RCBO	2.5	GAMING	SIGNAGE	A
L7	1	20	RCBO	2.5	GAMING	SIGNAGE	A
L8	1	20	RCBO	2.5	GAMING	SIGNAGE	A
L9	1	20	RCBO	2.5	GAMING	SIGNAGE	A

LEGEND

- ELECTRICAL SERVICES SWITCHBOARD.
- SWITCHBOARD / CONTROL PANEL NOT PROVIDED AS PART OF THE ELECTRICAL SUBCONTRACT.
- SINGLE POWER OUTLET.
- DOUBLE POWER OUTLET.
- SIGNAGE CONNECTION.
- SINGLE PHASE ISOLATOR.
- THREE PHASE ISOLATOR.
- CONDUIT ROUTE.
- SPx

LIGHTING CONTROL SWITCHPANEL, TYPE x.
- CIRCUIT LINE.
- SWITCH LINE.
- DB-x - Py

POWER CIRCUIT DESIGNATION.
DENOTES DB AND CIRCUIT.
- xx

LIGHTING CONTROL CHANNEL REFERENCE.
- ELECTRICAL EQUIPMENT AS NOTED.
- REFER TO DETAIL NOTED FOR THE AREA SHOWN HATCHED.
ADDITIONAL OUTLETS & FITTINGS MAY BE SHOWN ON DETAIL.
- TE

MANUAL TRAILING EDGE POT DIMMER.
- DALI

MANUAL DALI POT DIMMER.
- RJ45 CAT-6 COMMUNICATIONS OUTLET.
- RJ45 CAT-6 GAMING OUTLET.
- GAMING FIBRE.
- MATV OUTLET.
- CCTV CAMERA OUTLET.
- BACKGROUND MUSIC SPEAKER.
- FDCIE
EWCIE

FIRE INDICATOR PANEL INCORPORATING THE FDCIE AND EWCIE.
- AUTO DOOR FIRE ALARM SYSTEM INTERFACE.
- Sx

RECESSED FIRE EVACUATION SPEAKER, TYPE AS NOTED.
- FIRE EVACUATION HORN.
- Sx

SMOKE DETECTOR, TYPE AS NOTED.
- CONCEALED SMOKE DETECTOR.
- E1

E1: GENERAL RECESSED LED EMERGENCY LIGHT, BLACK.
- E2

E2: TIMBER FEATURE RECESSED LED EMERGENCY LIGHT, BLACK.
- EX

EX: EMERGENCY LED EXIT LIGHT, BLACK.
- L01

L01: RECESSED DOWNLIGHT.
- L02

L02: WALL LIGHT.
- L03

L03: 2 FITTING WALL LIGHTS.
- L04

L04: DECORATIVE PENDANT.
- L05

L05: DECORATIVE PENDANT.
- L06

L06: DECORATIVE PENDANT.
- L07

L07: CURTAIN PELMET LED STRIP LIGHT.

LEGEND

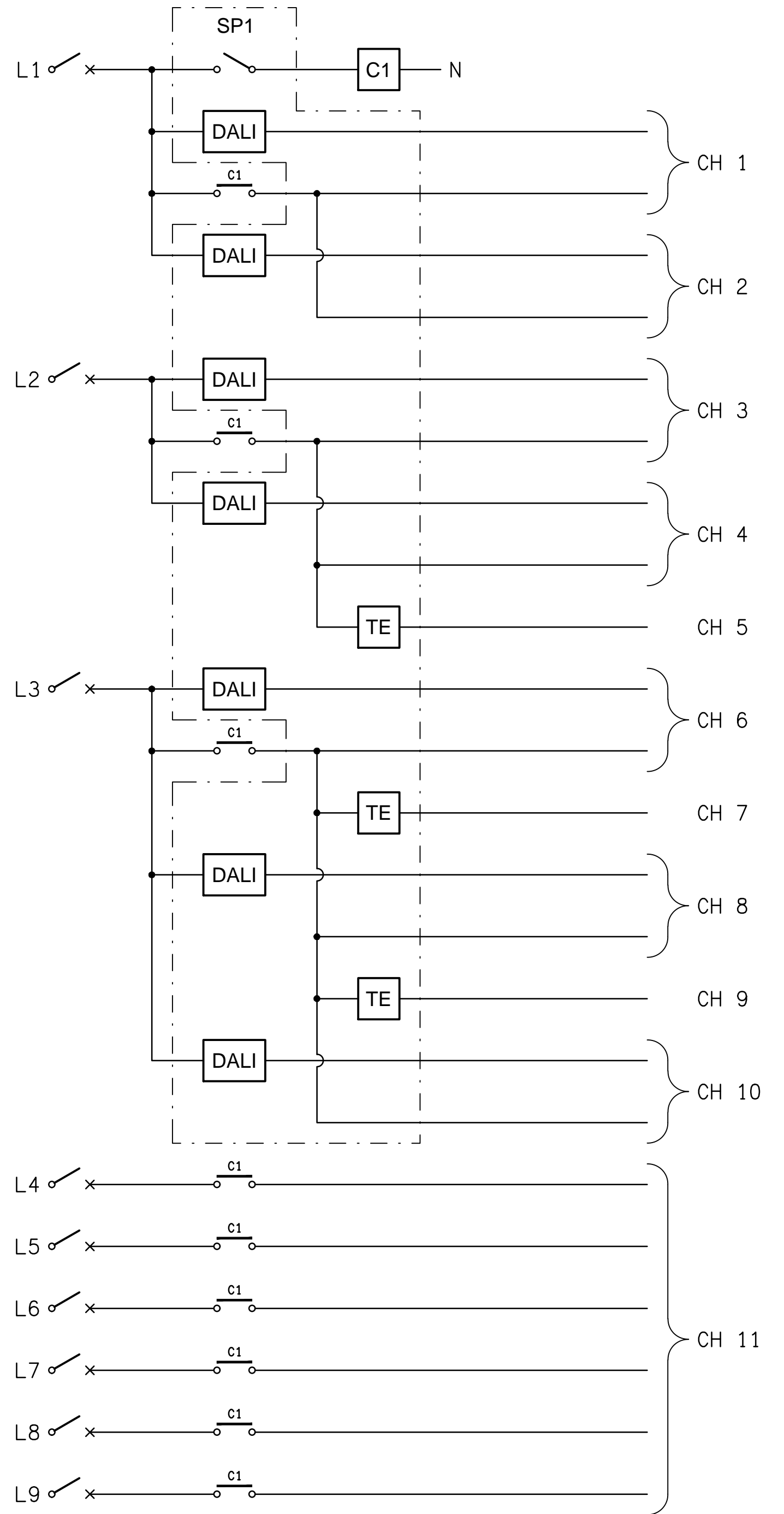
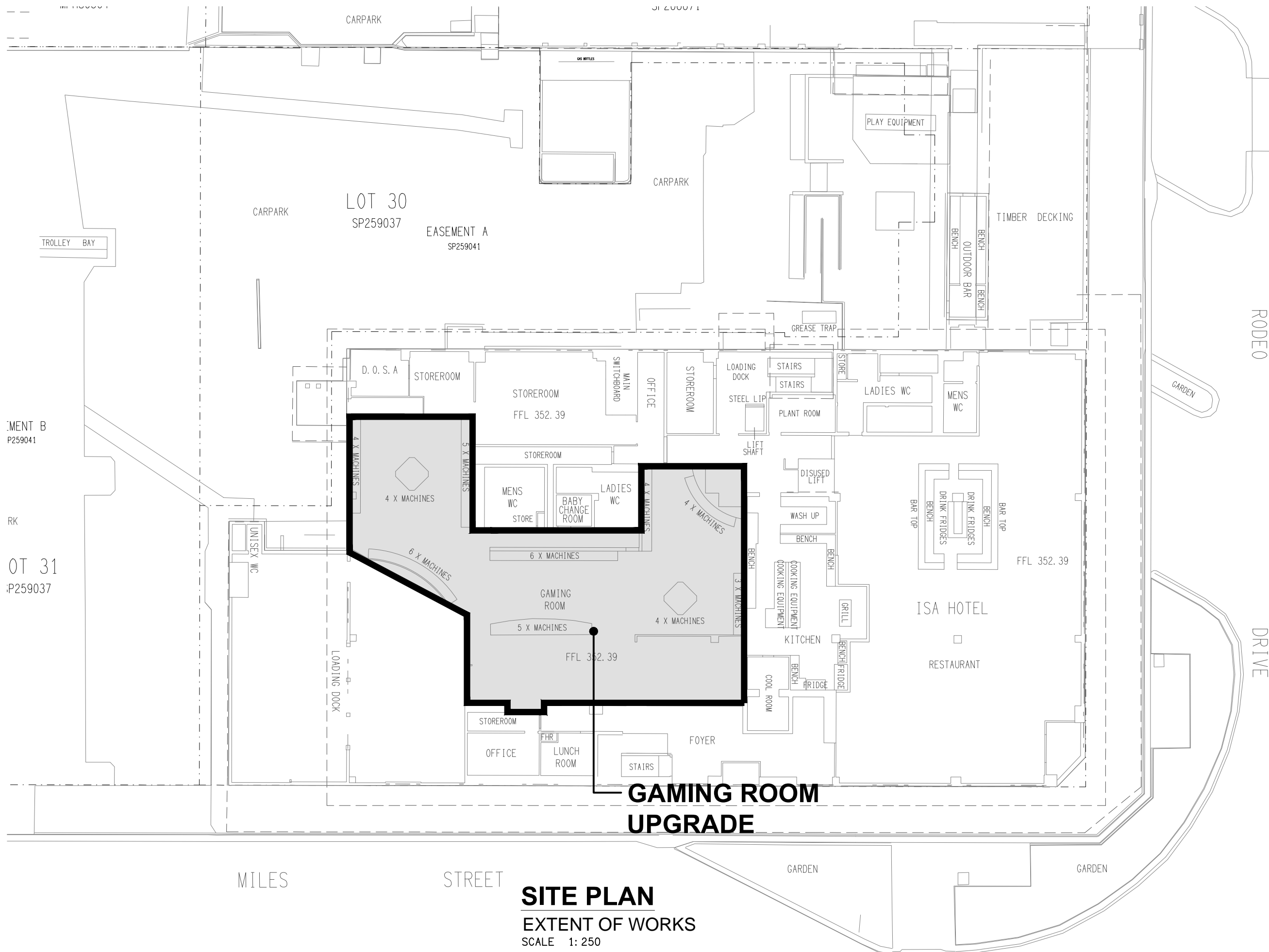
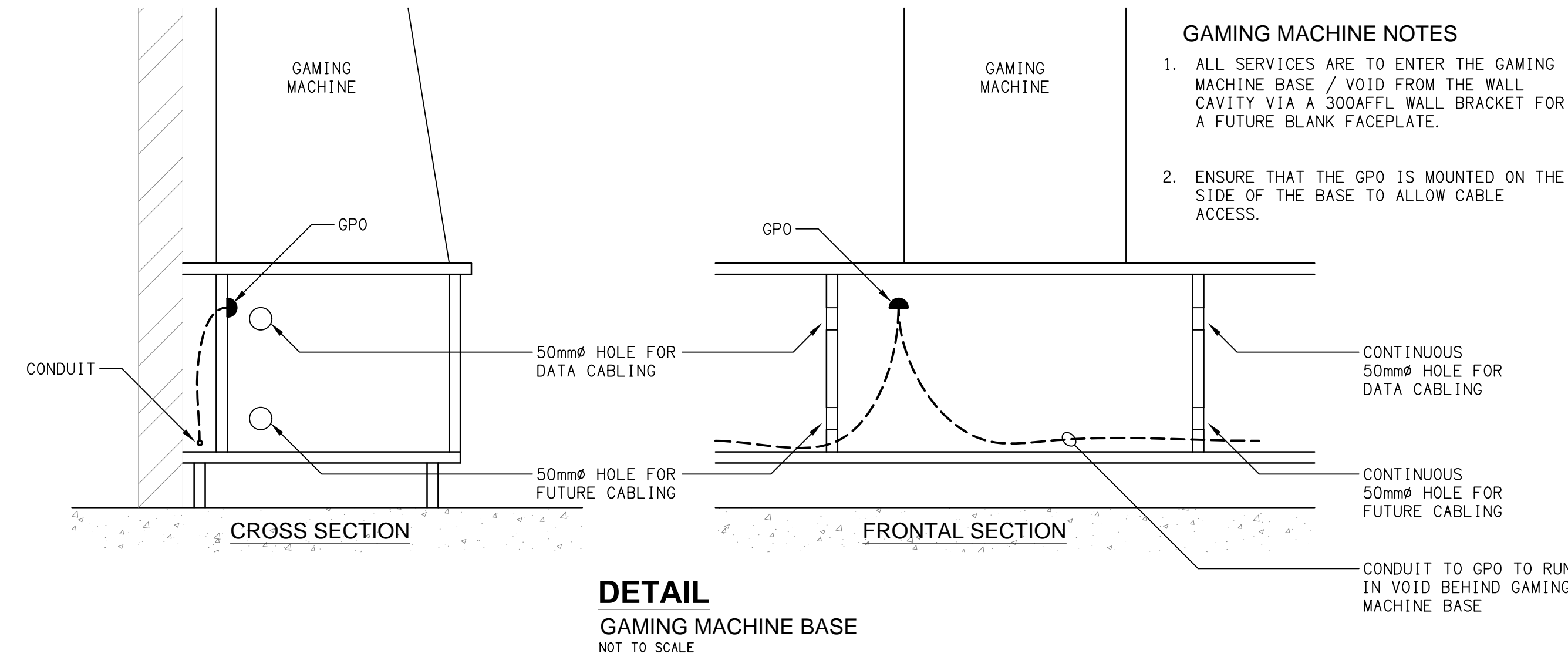
- L08

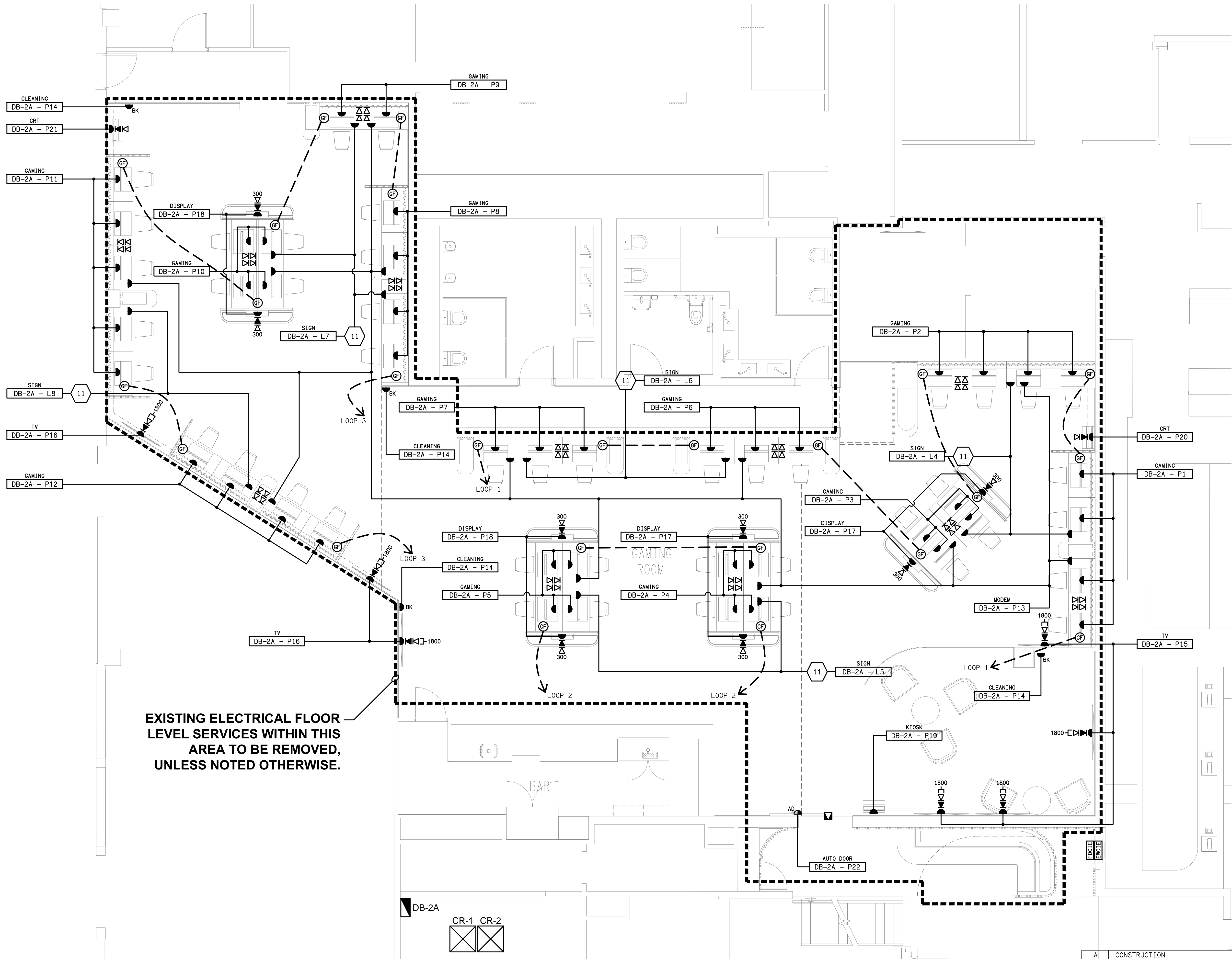
L08: GARDEN SPIKE LIGHT.
- L09

L09: RECESSED DOWNLIGHT.
- L10

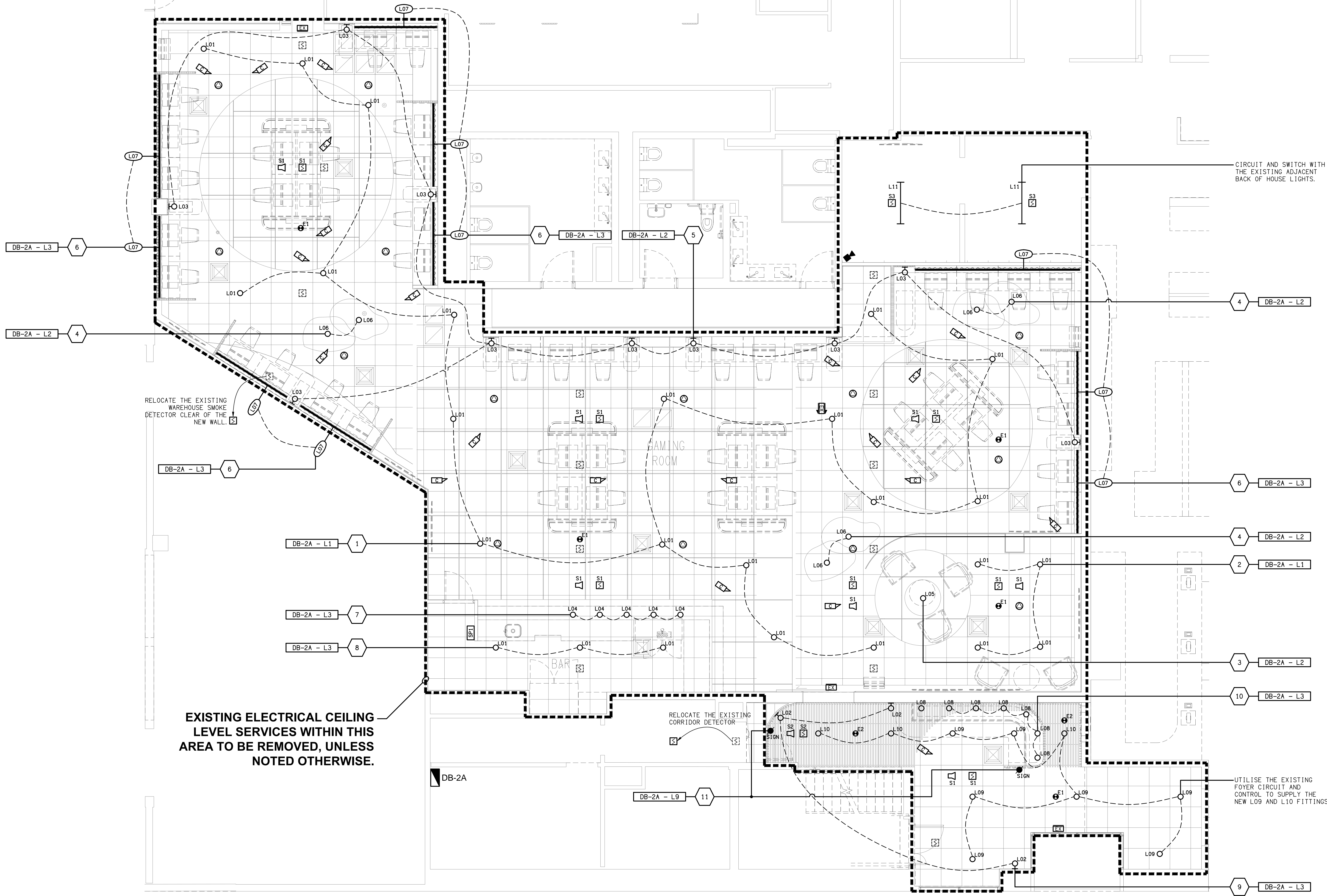
L10: RECESSED DOWNLIGHT.
- L11

L11: 1200 LONG SUSPENDED / SURFACE MOUNTED IP65 BATTEN.





EXISTING ELECTRICAL FLOOR
LEVEL SERVICES WITHIN THIS
AREA TO BE REMOVED,
UNLESS NOTED OTHERWISE.



RELOCATE THE EXISTING WAREHOUSE SMOKE DETECTOR CLEAR OF THE NEW WALL.

RELOCATE THE EXISTING CORRIDOR DETECTOR

CIRCUIT AND SWITCH WITH THE EXISTING ADJACENT BACK OF HOUSE LIGHTS.

UTILISE THE EXISTING FOYER CIRCUIT AND CONTROL TO SUPPLY THE NEW L09 AND L10 FITTINGS.

EXISTING ELECTRICAL CEILING LEVEL SERVICES WITHIN THIS AREA TO BE REMOVED, UNLESS NOTED OTHERWISE.

NOTES

1. EXTENT OF WORKS

THE ELECTRICAL SERVICES SUB-CONTRACT INCLUDES BUT IS NOT LIMITED TO THE FOLLOWING:

- SUPPLY AND INSTALLATION OF ALL COMPONENTS FORMING PART OF THE ELECTRICAL SERVICES.
- INSPECTIONS.
- TESTING AND COMMISSIONING.
- MAINTENANCE.
- CABLING, CABLE SUPPORT SYSTEMS AND ACCESS.
- POWER DISTRIBUTION.
- LIGHTING.
- COMMUNICATIONS CABLING.
- BACKGROUND MUSIC.
- FIRE ALARM SYSTEM.
- MATV.
- MODIFICATION, RELOCATION AND EXTENSION AS NECESSARY OF ALL EXISTING SERVICES THAT ARE IMPACTED BY THE WORKS OR REQUIRED TO BE EXTENDED BY THE WORKS.
- REMOVAL OF ALL EXISTING SERVICES MADE REDUNDANT BY THE WORKS.
- DOCUMENTS.
- ANY TEMPORARY WORKS REQUIRED TO KEEP THE HOTEL OPERATING DURING THE CONSTRUCTION PROCESS AND ACCOMMODATE STAGING OF THE WORKS TO REFLECT THE EXECUTION OF THE MAIN CONTRACT WORKS.
- ALL MINOR COMPONENTS AND INCIDENTAL WORKS NOT SPECIFICALLY REFERRED TO, HOWEVER NECESSARY TO COMPLETE THE ELECTRICAL SERVICES INSTALLATION SUCH THAT IT IS HANDED OVER COMPLETE, OPERATIONAL AND FIT FOR THE INTENDED USE.

PRIOR TO COMMENCING WORK CONSULT SITE MANAGEMENT FOR ANY HAZARDOUS MATERIAL AND OR ASBESTOS REGISTERS AS WELL AS UNDERTAKE A THOROUGH INSPECTION OF THE SITE TO IDENTIFY ANY POTENTIAL HAZARDOUS MATERIALS, ASBESTOS AND HEALTH OR SAFETY RISKS. ADVISE THE CONTRACTOR OF ANY POTENTIAL HAZARDOUS MATERIALS, ASBESTOS AND HEALTH OR SAFETY RISKS IF IDENTIFIED AND DO NOT COMMENCE WORK UNTIL AN APPROPRIATE MANAGEMENT PLAN HAS BEEN DEVELOPED AND AGREED TO BY ALL PARTIES.

SUPPLY ALL LABOUR, MATERIALS, EQUIPMENT, AND ALL OTHER ITEMS, WHETHER MENTIONED IN DETAIL OR NOT, REQUIRED FOR THE SATISFACTORY COMPLETION OF THE ELECTRICAL SERVICES INSTALLATION, LEAVING IN FULL WORKING ORDER TO THE SATISFACTION OF THE PROJECT MANAGER.

ACCEPT FULL RESPONSIBILITY FOR LIASING, ARRANGING AND CO-ORDINATION OF ALL WORKS THAT HAVE AN EFFECT ON OR WILL BE AFFECTED BY THE ELECTRICAL SERVICES.

REFER TO THE EQUIPMENT SCHEDULE FOR ADDITIONAL REQUIREMENTS.

2. WORKMANSHIP

ENSURE THAT THE ELECTRICAL WORK IS PERFORMED BY THE HOLDER OF A CURRENT ELECTRICAL SUB CONTRACTOR LICENSE AND THE SERVICES COVERED BY THE ACMA IS PERFORMED BY THE HOLDER OF THE APPROPRIATE CURRENT ACMA LICENSE. ENSURE THE INSTALLATION AND ALL COMPONENTS, FIXTURES, FITTINGS, OUTLETS AND CABLES ARE SUPPLIED AND INSTALLED TO A HIGH STANDARD THROUGHOUT, AND INSTALLED IN A NEAT AND TRADESMAN LIKE MANNER, TO THE CURRENT INDUSTRY STANDARDS. ENSURE ALL MATERIALS AND COMPONENTS OF A SIMILAR TYPE ARE OF THE SAME MANUFACTURER AND INSTALLED IN A UNIFORM MANNER.

IT IS THE ELECTRICAL SUB CONTRACTOR'S RESPONSIBILITY TO ENSURE THAT THE INSTALLATION IS FIT FOR PURPOSE AND IS PROVIDED AS A COMPLETE WORKING INSTALLATION. IT IS THE ELECTRICAL SUB CONTRACTOR'S RESPONSIBILITY TO PROVIDE ALL COMPONENTS, FITTINGS, FIXTURES, SYSTEMS, PROGRAMMING ETC IRRESPECTIVE OF THE LEVEL DETAILED IN THE DOCUMENTS SUCH THAT THE INSTALLATION IS PROVIDED AS A COMPLETE WORKING INSTALLATION.

CONCEAL ALL WIRING AND CONDUITS. EXPOSED CABLING OR CONDUITS ARE GENERALLY NOT ACCEPTABLE. IT IS NOTED THAT CHASING AND REINSTATEMENT WILL BE REQUIRED. ENSURE ALL COMPONENTS, EQUIPMENT AND MATERIALS SUPPLIED ARE NEW, UNUSED, DESIGNED AND SELECTED TO ENSURE SATISFACTORY OPERATION UNDER VARYING ATMOSPHERIC, CLIMATIC, HUMID TROPICAL CONDITIONS WITHOUT DISTORTION AND DETERIORATION IN ANY PART AFFECTING EFFICIENCY AND RELIABILITY OF THE SYSTEMS. DESIGN AND SELECT ALL EQUIPMENT TO PROVIDE THE NECESSARY SAFETY TO HUMAN LIFE AND PROPERTY DURING OPERATION AND MAINTENANCE WITH PARTICULAR ATTENTION GIVEN TO ELECTRICAL SAFETY AND SEGREGATION PRECAUTIONS.

CHECK THE FINISHED PAINTWORK AROUND THE AREA OF EACH INSTALLATION AND TOUCH UP ALL DAMAGED PARTS AND FINISHES AFTER THE INSTALLATION OF THE ELECTRICAL SERVICES.

ALL WORKS ARE TO BE CARRIED OUT IN ACCORDANCE WITH THE BUILDER'S PROGRAM. ENSURE ALL FINAL LOCATIONS OF OUTLETS AND FITTINGS ARE CO-ORDINATED ONSITE WITH THE ARCHITECT AND ALL OTHER SERVICES, TO THE APPROVAL OF THE PROJECT MANAGER. ALLOW TO CO-ORDINATE THE FINAL LOCATION OF ALL EQUIPMENT, FITTINGS, & OUTLETS, SUCH THAT THEY ARE INSTALLED IN ACCORDANCE WITH THE AS3000 RESTRICTED ZONES, AND ARE NOT COVERED INAPPROPRIATELY.

ENSURE THAT ALL METAL SURFACES ARE SUITABLY PROTECTED AGAINST CORROSION, AND THAT ALL PLASTIC MATERIALS ARE UV STABILISED.

PROVIDE ALL MATERIALS AS NEW, AND OF THE HIGHEST CLASS AVAILABLE FOR THEIR RESPECTIVE TYPES. ENSURE ALL ASPECTS OF THE WORK ARE OF A HIGH STANDARD THROUGHOUT, AND INSTALLED IN A NEAT AND TRADESMAN LIKE MANNER, TO THE CURRENT INDUSTRY STANDARDS.

MODIFICATION, RELOCATION AND EXTENSION AS NECESSARY OF ALL EXISTING SERVICES THAT ARE IMPACTED BY THE WORKS OR REQUIRED TO BE EXTENDED BY THE WORKS.

PROVIDE ALL TEMPORARY WORKS REQUIRED TO KEEP THE VENUE AND ALL CONSTRUCTION STAGES OPERATING INCLUDING STAGED COMMISSIONING DURING THE CONSTRUCTION PROCESS.

ALL MINOR COMPONENTS AND INCIDENTAL WORKS NOT SPECIFICALLY REFERRED TO, HOWEVER NECESSARY TO COMPLETE THE ELECTRICAL SERVICES INSTALLATION SUCH THAT IT IS HANDED OVER COMPLETE, OPERATIONAL AND FIT FOR THE INTENDED USE.

CORRUGATED CONDUITS MUST NOT BE USED WITHIN ANY FOOD OR DRINK PREPARATION OR SERVERY AREAS.

CABLE JOINS ARE NOT ACCEPTABLE. ALL CABLING, WIRING, CONDUCTORS AND CONDUITS MUST BE CONCEALED. ALL EXISTING ELECTRICAL SERVICES INCLUDING CABLING AND SWITCHGEAR THAT IS FOUND TO BE REDUNDANT OR MADE REDUNDANT BY THE WORKS MUST BE REMOVED.

IT IS ACCEPTABLE TO USE EXISTING SWITCHGEAR, OUTLETS AND CABLING IF THEY ARE APPROPRIATELY RATED AND THE ELECTRICIAN ACCEPTS RESPONSIBILITY OVER THE SWITCHGEAR / OUTLETS / CABLE AND PROVIDES A WARRANTY OVER IT AS IF IT WAS INSTALLED NEW BY THE ELECTRICIAN.

NOTES

3. CABLES

UNLESS OTHERWISE SPECIFIED, INSTALL AND TERMINATE CABLES IN ACCORDANCE WITH THE MANUFACTURERS' RECOMMENDATIONS. DETERMINE THE FINAL ROUTES TO SUIT THE BUILDING STRUCTURE AND SITE CONDITIONS. UNLESS NOTED OTHERWISE, PROVIDE ALL 240 VOLT POWER AND LIGHTING WIRING AS 2.5mm² TWIN & EARTH STRANDED COPPER CONDUCTORS, PVC INSULATED 0.6/1kV V75 GRADE TO AS3174, PROTECTED BY A 20 AMP CIRCUIT BREAKER. ALL CONDUIT AND FITTINGS TO BE RIGID UPVC TO AS2053, UNLESS NOTED OTHERWISE.

4. DOCUMENTATION

WITHIN TWO WEEKS OF PRACTICAL COMPLETION PROVIDE THE FOLLOWING DOCUMENTATION.

AS CONSTRUCTED DRAWINGS INCLUDING:

- ELECTRICIANS NAME AND CONTACT DETAILS.
- PROJECT NAME, ADDRESS AND DATE OF PRACTICAL COMPLETION.
- FITTING POSITIONS AND TYPES CROSS REFERENCED TO A FITTING / EQUIPMENT SCHEDULE.
- OUTLET, SWITCH, AND CONNECTION POSITIONS CROSS REFERENCED TO A FITTING / EQUIPMENT SCHEDULE.
- REMOTE DRIVER LOCATIONS.
- CIRCUITS CROSS REFERENCED TO A DISTRIBUTION BOARD SCHEDULE.
- LIGHTING CONTROL CHANNELS CROSS REFERENCED TO A LIGHTING CONTROL SCHEDULE.
- POWER SCHEMATIC.
- CABLE ACCESS ROUTES.

A FITTING / EQUIPMENT SCHEDULE INCLUDING.

- FITTING DETAILS INCLUDING THE MANUFACTURERS CATALOGUE NUMBERS WITH THE TYPES CROSS REFERENCED TO THE AS CONSTRUCTED DRAWINGS.
- OUTLETS AND SWITCHES INCLUDING THE MANUFACTURERS CATALOGUE NUMBERS WITH THE TYPES CROSS REFERENCED TO THE AS CONSTRUCTED DRAWINGS.

DISTRIBUTION BOARD SCHEDULES CROSS REFERENCED TO THE AS CONSTRUCTED DRAWINGS.

PHOTOS OF DB-2AD INCLUDING:

- CLOSED POSITION SUCH THAT THE SWITCHBOARD DESIGNATION AND CLEARANCE IS VISIBLE.
- DOOR/S OPEN ESCUTCHEON/S CLOSED SUCH THAT THE SPARE CAPACITY AND LABELLING IS VISIBLE.
- DOOR/S OPEN ESCUTCHEON/S REMOVED SUCH THAT THE SWITCHGEAR AND INTERNAL CABLING IS VISIBLE.

5. POWER DISTRIBUTION

UPGRADE THE EXISTING DISTRIBUTION BOARD DB-2A TO ACCOMMODATE THE NEW CIRCUITS AND MODIFICATIONS AS NOTED IN THE DB-2A DISTRIBUTION BOARD SCHEDULE.

ALL CIRCUIT BREAKERS AND CIRCUIT SCHEDULES MUST BE LABELLED / CONTAIN THE SUBMAIN / CIRCUIT USE AND LOCATION SUCH THAT THE CONNECTION / OUTLET CAN BE SIMPLY IDENTIFIED.

OUTLETS ARE TO BE PROVIDED WITH A NEAT HAND WRITTEN CIRCUIT DESIGNATION BY INDELIBLE INK ON THE FACEPLATE SUCH THAT IT IS NOT VISIBLE WHEN THE COVER IS CONCEALED.

THE POWER DISTRIBUTION COMPONENT OF THIS CONTRACT INCLUDES, BUT IS NOT LIMITED TO THE FOLLOWING EXTENT OF WORK:

- POWER DISTRIBUTION.
- UPGRADING THE EXISTING SWITCHBOARD DB-2A.
- CABLE ACCESS WAYS.
- CIRCUITS.
- ISOLATORS AND OUTLETS.
- TESTING AND COMMISSIONING.
- REMOVAL OF ALL EXISTING REDUNDANT SERVICES.
- RECONNECTION OF ALL EXISTING SERVICES THAT REMAIN.

6. LIGHTING

REMOTE DRIVERS ARE TO BE USED IF POSSIBLE AND LOCATED IN A CONCEALED ACCESSIBLE POSITION. IF THE DRIVER CAN NOT BE REACHED FROM THE FITTING ITS POSITION MUST BE NOTED ON THE AS CONSTRUCTED DOCUMENTS.

ALL FRONT OF HOUSE LIGHTS THAT CONTAIN MAIN VOLTAGE LAMPS ARE TO BE PROVIDED WITH THE LOWEST OUTPUT PRACTICAL TO ACHIEVE THE REQUIRED ILLUMINATION / EFFECT AND BE TRAILING EDGE PHASE DIMMABLE.

ALL LIGHTING CIRCUITS MUST BE PROTECTED BY A 20 AMP RCBO WITH THE AVERAGE NUMBER OF FITTINGS / DRIVERS SUPPLIED FROM A SINGLE CIRCUIT NOT EXCEEDING 25 WITH THE MAXIMUM NOT EXCEEDING 30.

ALL OF THE LIGHT FITTINGS, LAMPS AND ACCESSORIES ARE TO BE PROVIDED AS PART OF THIS CONTRACT. THE LIGHTING COMPONENT OF THIS CONTRACT INCLUDES, BUT IS NOT LIMITED TO THE FOLLOWING EXTENT OF WORK:

- LIGHTING.
- LIGHT FITTINGS AND ACCESSORIES.
- EMERGENCY AND EXIT LIGHTING.
- EARTHING OF THE LIGHTING INSTALLATION.
- LIGHTING CONTROL.
- LIGHTING SUBCIRCUITS.
- TESTING AND COMMISSIONING.
- RECONNECTION OF THE EXISTING LIGHTING THAT REMAINS.
- REMOVAL OF ALL EXISTING REDUNDANT LIGHTING SERVICES INCLUDING THE REDUNDANT LIGHTING CONTROL SYSTEM.

NOTES

7. EMERGENCY AND EXIT LIGHTING

PROVIDE A SINGLE POINT EMERGENCY LIGHTING SYSTEM THAT COMPLIES WITH THE LATEST ISSUE OF ALL PARTS AS2293 AND THE RELEVANT PARTS OF THE NCC BCA. INSTALL EMERGENCY LIGHT FITTINGS NOMINATED AS MAINTAINED WITH THE LAMP PERMANENTLY ON SUPPLIED VIA AN UNSWITCHED ACTIVE MAINS SUPPLY WHEN THE MAINS SUPPLY IS AVAILABLE. WHEN THE MAINS SUPPLY IS NOT AVAILABLE, THE LAMP IS TO REMAIN ON SUPPLIED BY THE EMERGENCY PACK. SINGLE LAMP MAINTAINED EMERGENCY LIGHTS ARE NOT SWITCHED WITH THE LOCAL GENERAL AREA LIGHTING. (THE LAMP IS ALWAYS ON.) INSTALL EMERGENCY LIGHT FITTINGS NOMINATED AS NON-MAINTAINED WITH THE LAMP REMAINING OFF WHEN THE MAINS SUPPLY IS AVAILABLE. WHEN THE MAINS SUPPLY IS NOT AVAILABLE THE LAMP IS TO BE SWITCHED ON SUPPLIED BY THE EMERGENCY PACK. NON-MAINTAINED EMERGENCY LIGHTS ARE NOT SWITCHED WITH THE LOCAL GENERAL AREA LIGHTING. INSTALL EMERGENCY LIGHTS SUCH THAT THE STATUS INDICATOR L.E.D. IS CLEARLY VISIBLE AND THE TEST BUTTONS ARE READILY ACCESSIBLE. LABEL EACH CIRCUIT BREAKER WHICH CONTROLS THE UNSWITCHED ACTIVE TO EXIT LIGHTS WITH A LABEL FIXED ADJACENT; ENGRAVED PLASTIC LAMINATE, GREEN BACKGROUND WITH WHITE CHARACTERS:-

WARNING
INTERRUPTING SUPPLY WILL DISCHARGE
EMERGENCY LIGHTING BATTERIES

PROVIDE WRITTEN EVIDENCE OF THE INITIAL COMMISSIONING AND TESTING AND TESTING FOR THE DURATION OF THE MAINTENANCE PERIOD IN ACCORDANCE WITH AS 2293.2.

THIS EVIDENCE IS TO BE IN THE FORM OF A LOG BOOK SIMILAR TO THE GENERAL LIGHTING SERVICE PTY LTD "EMERGENCY LIGHTING MAINTENANCE LOG BOOK AND MANUAL" WHICH IS TO BE PROVIDED BY THE ELECTRICAL SUB-CONTRACTOR AND HAVE ALL ENTRIES FULLY COMPLETED AND BE PRESENTED FOR INSPECTION AT PRACTICAL COMPLETION. THE LOG BOOK IS TO BE RETAINED BY THE ELECTRICAL SUB-CONTRACTOR FOR THE DURATION OF THE MAINTENANCE PERIOD, AND THE SIX MONTHLY TEST AND MAINTENANCE RESULTS ENTERED. THE LOG BOOK IS TO BE PRESENTED FOR APPROVAL AT FINAL COMPLETION (EXPIRY OF THE MAINTENANCE PERIOD) AND WILL BE FORWARDED TO THE OPERATOR FOR THEIR USE.

PROVIDE MAINTENANCE OF THE EMERGENCY AND EXIT LIGHTING INSTALLATION INCLUDING RECORDS IN ACCORDANCE WITH THE LATEST ISSUE OF ALL PARTS AS2293 AND THE RELEVANT PARTS OF THE NCC BCA. PROVIDE THE EMERGENCY LIGHTING SYSTEM WITH A SUPPLY SENSING AND TESTING FACILITY IN ACCORDANCE WITH AS 2293.1.

8. COMMUNICATIONS CABLING

THE COMMUNICATIONS CABLING COMPONENT OF THIS CONTRACT INCLUDES A UTP CAT 6 CABLING SOLUTION FOR THE COMMUNICATIONS OUTLETS, GAMING OUTLETS AND CCTV OUTLETS THROUGHOUT THE AREA OF THE WORKS. ALL OF THE EXISTING COMMUNICATION CABLES THAT BECOME REDUNDANT ARE TO BE REMOVED. THE COMMUNICATIONS CABLING COMPONENT OF THIS CONTRACT INCLUDES, BUT IS NOT LIMITED TO THE FOLLOWING EXTENT OF WORK:

- REMOVAL OF EXISTING REDUNDANT CABLING.
- NEW COMMUNICATIONS OUTLETS AND CABLING.
- CCTV OUTLET AND CABLING.
- GAMING OUTLETS AND CABLING.
- GAMING FIBRE ACCESS.
- PATCH PANELS WITHIN THE RACK AS REQUIRED.
- TESTING AND COMMISSIONING.

9. BACKGROUND MUSIC

THE BACKGROUND MUSIC COMPONENT OF THIS CONTRACT INCLUDES REMOVING THE EXISTING GAMING ROOM SPEAKERS AND PROVIDING NEW SPEAKERS UTILISING THE EXISTING BACKGROUND MUSIC SYSTEM.

THE BACKGROUND MUSIC COMPONENT OF THIS CONTRACT INCLUDES, BUT IS NOT LIMITED TO THE FOLLOWING EXTENT OF WORK:

- NEW SPEAKERS AND CABLING AS REQUIRED.
- REMOVAL OF EXISTING CABLING MADE REDUNDANT BY THE WORKS.
- TESTING AND COMMISSIONING.

THE EXISTING CABLING AND SPEAKERS CAN BE REUSED IF IT IS IN APPROPRIATE CONDITION AND THE CONTRACTOR ASSUMES FULL WARRANTY OVER IT AS IF THEY HAVE INSTALLED IT AS PART OF THESE WORKS.

10. FIRE ALARM

GOLD COAST FIRE PROTECTION, (07) 5597 1247 , WILL WAIKATO 18 129 610, w.waikato@goldcoastfire.com.au IS TO BE ENGAGED AS A NOMINATED SUBCONTRACTOR TO UNDERTAKE ALL WORKS ASSOCIATED WITH THE FIRE ALARM SYSTEM. THE FIRE ALARM COMPONENT OF THIS CONTRACT IS TO INCLUDES MODIFYING THE EXISTING BRIGADE MONITORED AS1670.1 COMPLIANT ADDRESSABLE FIRE DETECTION AND ALARM SYSTEM.

THE FIRE ALARM COMPONENT OF THIS CONTRACT IS TO INCLUDE, BUT IS NOT LIMITED TO THE FOLLOWING EXTENT OF WORK:

- INTERFACE THE FIP TO THE AUTO DOOR TO UNLOCK UPON ALARM.
- SPEAKERS AND HORNS.
- ADDRESSABLE SMOKE DETECTORS.
- ADDRESSABLE CONCEALED SPACE DETECTORS C/W REMOTE INDICATORS AND REMOTE ACCESS BRACKETS AS REQUIRED.
- CABLING.
- TESTING AND COMMISSIONING.
- LOG BOOK UPDATE.
- MAINTENANCE DURING THE DEFECTS AND LIABILITY PERIOD IN ACCORDANCE WITH MP6.1 OF THE QDC AND AS1851.
- PAY ALL COSTS ASSOCIATED WITH THE ISOLATION AND RECONNECTION OF THE BRIGADE MONITORING OF THE FIRE ALARM SYSTEM.

REMOVE ALL EXISTING REDUNDANT FIRE ALARM SERVICES.

11. MATV

THE MATV COMPONENT OF THIS CONTRACT INCLUDES REMOVING THE EXISTING GAMING ROOM MATV OUTLETS AND PROVIDING NEW MATV OUTLETS / CABLING UTILISING THE EXISTING MATV SYSTEM. UPGRADE THE EXISTING MATV SYSTEM AS NECESSARY TO ACCOMMODATE THE NEW GAMING ROOM MATV OUTLETS.

THE MATV OF THIS CONTRACT INCLUDES, BUT IS NOT LIMITED TO THE FOLLOWING EXTENT OF WORK:

- NEW MATV OUTLETS AND CABLING AS REQUIRED.
- REMOVAL OF EXISTING CABLING MADE REDUNDANT BY THE WORKS.
- TESTING AND COMMISSIONING.

THE EXISTING CABLING CAN BE REUSED IF IT IS IN APPROPRIATE CONDITION AND THE CONTRACTOR ASSUMES FULL WARRANTY OVER IT AS IF THEY HAVE INSTALLED IT AS PART OF THESE WORKS.

NOTES

12. ABBREVIATIONS

A - AMP CURRENT RATING
AB - MOUNT ABOVE BENCH.
AFFL - ABOVE FINISHED FLOOR LEVEL.
BB - MOUNT BELOW BENCH.
BH - MOUNT ON BULKHEAD.
BOH - BACK OF HOUSE.
CEIL - MOUNT ON CEILING.
CS - MOUNT WITHIN CEILING SPACE.
C/W - COMPLETE WITH.
FOH - FRONT OF HOUSE.
MCB - MINIATURE CIRCUIT BREAKER.
N - NEON / LED INDICATOR WHEN ON.
NTS - NOT TO SCALE.
RCBO - CIRCUIT BREAKER C/W AN INTEGRAL 30mA RESIDUAL CURRENT DEVICE.
RCD - CIRCUIT PROTECTED VIA A 30mA RESIDUAL CURRENT DEVICE.
UNO - UNLESS NOTED OTHERWISE.
WP - WEATHERPROOF TO IP56 UNO.
500 - NUMBER DENOTES MOUNTING HEIGHT AFFL.

ELECTRICAL DESIGN GROUP BRISBANE PTY LTD ACN 092 710 793			THE COPYRIGHT OF THIS DRAWING REMAINS THE PROPERTY OF THE ELECTRICAL DESIGN GROUP.			PROJECT: ISA HOTEL - GAMING ROOM UPGRADE			A CONSTRUCTION 02/12/2025	
TRADING AS: ELECTRICAL DESIGN GROUP			USE FIGURED DIMENSIONS IN PREFERENCE TO SCALE.			DRAWING: ELECTRICAL SERVICES NOTES			REV: DESCRIPTION: DATE:	
			ALL DIMENSIONS TO BE VERIFIED ONSITE.			13 MILES STREET, MOUNT ISA, QUEENSLAND			SCALE: NOT TO SCALE AT A1	
									PROJECT NO: C3543a	
									DRAWING NO: E04	
									REVISION: A	