

**C3613a - ST JOHNS ANGLICAN COLLEGE, FOREST LAKE - JUNIOR CAMPUS ADMINISTRATION UPGRADE  
ELECTRICAL SERVICES CONTRACT DOCUMENT SCHEDULE  
REVISION B - 09 SEPTEMBER 2025**

C3613a-0001(B).x

ISSUING INFORMATION				DATE OF ISSUE									
				DAY	02	09							
				MONTH	09	09							
				YEAR	25	25							
				REASON FOR ISSUE	P	T							
A = APPROVAL      C = CONSTRUCTION      N = COORDINATION      P = PRELIMINARY      T = TENDER													

DISTRIBUTION		NUMBER OF COPIES							
WWW.EDG.NET.AU		1E	1E						
BSPN ARCHITECTURE		1E	1E						
P = PRINT	T = TRACING	D = DISC	E = EMAIL	F = FAX					

[illegible]



# ELECTRICAL DESIGN GROUP

ELECTRICAL BUILDING SERVICES CONSULTANTS

P.O. Box 15, SHERWOOD Q. 4075

Phone: (07) 3278 4375 Fax: (07) 3716 0222

Web Site: [www.edg.net.au](http://www.edg.net.au) Email: [brisbane@edg.net.au](mailto:brisbane@edg.net.au)

## C3613a - ST JOHNS ANGLICAN COLLEGE, FOREST LAKE - JUNIOR CAMPUS ADMINISTRATION UPGRADE

### ELECTRICAL EQUIPMENT SCHEDULE

REVISION B - 09 SEPTEMBER 2025

C3613a-0002(B).xls

THE LIGHT FITTING SUPPLIER CONTACT DETAILS MAY BE AVAILABLE ON THE EDG WEBSITE VIA THE FOLLOWING LINK  
[www.edg.net.au/Links/Lighting.htm](http://www.edg.net.au/Links/Lighting.htm)

TYPE	LAMPS	DESCRIPTION	COLOUR / ACCESSORY	CATALOGUE No	REV
L1	34W 4000K LED	300 X 1200 LAY IN FLAT PLATE LED FITTING C/W SURFACE MOUNTING KIT	WHITE TRIM	GAMMA ILLUMINATION AXIS 1548-4K-34W + SM KIT	A
L2	22W 4000K LED	RECESSED 55 DEG BEAM DOWNLIGHT C/W REMOTE DALI DIMMABLE DRIVER	WHITE TRIM	GAMMA COBALT 1402-4K-22W	A
L3	22W 4000K LED	RECESSED 55 DEG BEAM DOWNLIGHT C/W REMOTE DRIVER	WHITE TRIM	GAMMA COBALT 1402-4K-22W	A
L4	13W 4000K LED	RECESSED DOWNLIGHT C/W REMOTE DRIVER	WHITE TRIM	GAMMA ILLUMINATION COBALT 1402-4K-13W	A
L5	22W 4000K LED	RECESSED ADJUSTABLE 55 DEG BEAM DOWNLIGHT C/W REMOTE DRIVER	WHITE TRIM	GAMMA MYLO 1004-VWFL-4K-22W	A
E1	LED	EMERGENCY LIGHT: RECESSED NON-MAINTAINED EMERGENCY LIGHT. AS2293 CLASSIFICATION C0-D40 - C90-D40.	WHITE	CLEVERTRONICS CLIFE	A
E2	LED	EMERGENCY LIGHT: RECESSED NON-MAINTAINED EMERGENCY LIGHT. AS2293 CLASSIFICATION C0-D40 - C90-D40. WALL MOUNT THE E2 FITTING 50MM ABOVE THE LOWER PICTURE RAIL.	WHITE	CLEVERTRONICS CLIFE	A
EX	LED	EXIT LIGHT: MAINTAINED 24M VIEWING DISTANCE EXIT LIGHT C/W DIFFUSERS & DIRECTIONAL ARROWS AS SHOWN. CEILING SURFACE MOUNT OR WALL MOUNT BETWEEN 2100mm & 2700mm AFFL IF THERE IS NO VERTICAL SURFACE TO MOUNT THE FITTING ON WITHIN THIS RANGE CONFIRM THE MOUNTING HEIGHT WITH THE ENGINEER. PROVIDE A CUSTOM WHITE COUNTER LEAVER MOUNTING BRACKET AS REQUIRED AS2293 CLASSIFICATION C0-D8 - C90-E3.2.	WHITE	CLEVERTRONICS LUB PRO SM	A
ONE-WAY LIGHT SWITCH		ONE-WAY LIGHT SWITCH C/W CIRCUIT IDENTIFICATION ON THE FACEPLATE BEHIND THE SURROUND MOUNTED AT 1000mm AFFL UNLESS NOTED OTHERWISE.	WHITE UNLESS NOTED AS BLACK (BK)	CLIPSAL C2000 SERIES FACEPLATE	A
TWO-WAY LIGHT SWITCH		TWO-WAY LIGHT SWITCH C/W CIRCUIT IDENTIFICATION ON THE FACEPLATE BEHIND THE SURROUND MOUNTED AT 1000mm AFFL UNLESS NOTED OTHERWISE.	WHITE UNLESS NOTED AS BLACK (BK)	CLIPSAL C2000 SERIES FACEPLATE	A
ONE-WAY DALI LIGHT SWITCH		ONE-WAY DALI LIGHT SWITCH / DIMMER C/W CIRCUIT IDENTIFICATION ON THE FACEPLATE BEHIND THE SURROUND MOUNTED AT 1000mm AFFL UNLESS NOTED OTHERWISE.	WHITE UNLESS NOTED AS BLACK (BK)	CLIPSAL C2000 SERIES FACEPLATE CDAL31M2PB	A



# ELECTRICAL DESIGN GROUP

ELECTRICAL BUILDING SERVICES CONSULTANTS

P.O. Box 15, SHERWOOD Q. 4075

Phone: (07) 3278 4375 Fax: (07) 3716 0222

Web Site: [www.edg.net.au](http://www.edg.net.au) Email: [brisbane@edg.net.au](mailto:brisbane@edg.net.au)

## C3613a - ST JOHNS ANGLICAN COLLEGE, FOREST LAKE - JUNIOR CAMPUS ADMINISTRATION UPGRADE

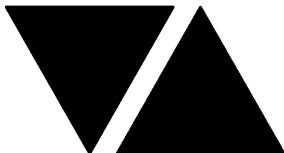
### ELECTRICAL EQUIPMENT SCHEDULE

#### REVISION B - 09 SEPTEMBER 2025

C3613a-0002(B).xls

THE LIGHT FITTING SUPPLIER CONTACT DETAILS MAY BE AVAILABLE ON THE EDG WEBSITE VIA THE FOLLOWING LINK  
[www.edg.net.au/Links/Lighting.htm](http://www.edg.net.au/Links/Lighting.htm)

TYPE	LAMPS	DESCRIPTION	COLOUR / ACCESSORY	CATALOGUE No	REV
SINGLE POWER OUTLET		SINGLE POWER OUTLET C/W CIRCUIT IDENTIFICATION ON THE FACEPLATE BEHIND THE SURROUND MOUNT AT 300mm AFFL U.N.O. RATING 10A U.N.O.	WHITE UNLESS NOTED AS BLACK (BK)	CLIPSAL C2000 SERIES FACEPLATE	A
DOUBLE POWER OUTLET		DOUBLE POWER OUTLET C/W CIRCUIT IDENTIFICATION ON THE FACEPLATE BEHIND THE SURROUND MOUNT AT 300mm AFFL U.N.O. RATING 10A U.N.O.	WHITE UNLESS NOTED AS BLACK (BK)	CLIPSAL C2000 SERIES FACEPLATE	A
DOUBLE POWER OUTLET (USB)		DOUBLE POWER OUTLET C/W USB A AND USB C CHARGER, CIRCUIT IDENTIFICATION ON THE FACEPLATE BEHIND THE SURROUND MOUNT AT 300mm AFFL U.N.O. RATING 10A U.N.O.	WHITE	CLIPSAL C2000 SERIES FACEPLATE	A
SINGLE-PHASE ISOLATOR		SINGLE-PHASE WEATHERPROOF ISOLATOR. MOUNT AT 1350mm AFFL U.N.O. RATING 20A U.N.O. CONNECT TO EQUIPMENT VIA FLEXIBLE CONDUIT.	-	CLIPSAL WHT20	A
THREE-PHASE ISOLATOR		THREE-PHASE WEATHERPROOF ISOLATOR. MOUNT AT 1350mm AFFL U.N.O. RATING 20A U.N.O. CONNECT TO EQUIPMENT VIA FLEXIBLE CONDUIT.	-	CLIPSAL WHT35	A
SPEAKER RECESSED		RECESSED 265 DIA DUAL CONE SPEAKER C/W 100V MULTI-TAP TRANSFORMER AND FLUSH GRILLE. EACH SPEAKER IS TO BE WIRED IN STAR CONFIGURATION TO THE AMPLIFIER MOUNTED IN THE COMMUNICATIONS RACK CR-B.	WHITE GRILLE	EQUAL TO BOSCH LBC 3099/41	A
SMOKE ALARM (S)		AS3786 COMPLIANT WHITE CEILING MOUNTED SMOKE ALARM C/W MAINS SUPPLY AND INTEGRAL 10 YEAR BATTERY BACKUP CONNECTED TO THE INTRUDER DETECTION SYSTEM.			A
CAT 6 COMMUNICATIONS OUTLET		RJ45 CAT-6 COMMUNICATIONS OUTLET, CABLED BACK TO THE COMMUNICATIONS RACK CR-B TERMINATED ONTO FACILITY PATCH PANELS VIA 4-PAIR CAT-6 UTP CABLE. MOUNT UP TO 3 RJ45 OUTLETS PER MULTI-GANG FACEPLATE WITH SEPARATE PERMANENT LABELLING FOR EACH OUTLET.	WHITE UNLESS NOTED OTHERWISE. CEILING MOUNTED OUTLET TO MATCH CEILING COLOUR	CLIPSAL C2000 SERIES FACEPLATE	A
COMMUNICATIONS RACK CR-B		EXISTING COMMUNICATION RACK TO BE PROVIDED WITH ADDITIONAL FIBRE AND PATCH PANELS MATCHING THE EXISTING TO ACCOMMODATE THE ADDITIONAL FIBRE AND COMMUNICATIONS OUTLETS.			A
DISTRIBUTION BOARD DB-B		DISTRIBUTION BOARD DB-B TO BE PROVIDED TO REPLACE THE EXISTING BUILDING SWITCHBOARD AS PER THE NOTES. RECONNECT ALL OF THE EXISTING CIRCUITS THAT REMAIN WITH NEW AS3000 COMPLIANT SWITCHGEAR. UPDATE THE SCHEDULE AT PRACTICAL COMPLETION. THE SUBMAIN SUPPLYING THE EXISTING BUILDING B SWITCHBOARD IS TO BE REDIRECTED / EXTENDED TO SUPPLY THE NEW DB-B.			A
CIRCUIT DB-B - P1		PROVIDE CIRCUIT DB-B -P1 AS A NEW 20 AMP RCBO PROTECTED 2.5MM SINGLE PHASE CIRCUIT FROM DISTRIBUTION BOARD DB-B.			B
CIRCUIT DB-B - P2		PROVIDE CIRCUIT DB-B -P2 AS A NEW 20 AMP RCBO PROTECTED 2.5MM SINGLE PHASE CIRCUIT FROM DISTRIBUTION BOARD DB-B.			B



# ELECTRICAL DESIGN GROUP

ELECTRICAL BUILDING SERVICES CONSULTANTS

P.O. Box 15, SHERWOOD Q. 4075

Phone: (07) 3278 4375 Fax: (07) 3716 0222

Web Site: [www.edg.net.au](http://www.edg.net.au) Email: [brisbane@edg.net.au](mailto:brisbane@edg.net.au)

**C3613a - ST JOHNS ANGLICAN COLLEGE, FOREST LAKE - JUNIOR CAMPUS ADMINISTRATION UPGRADE**  
**ELECTRICAL EQUIPMENT SCHEDULE**  
**REVISION B - 09 SEPTEMBER 2025**

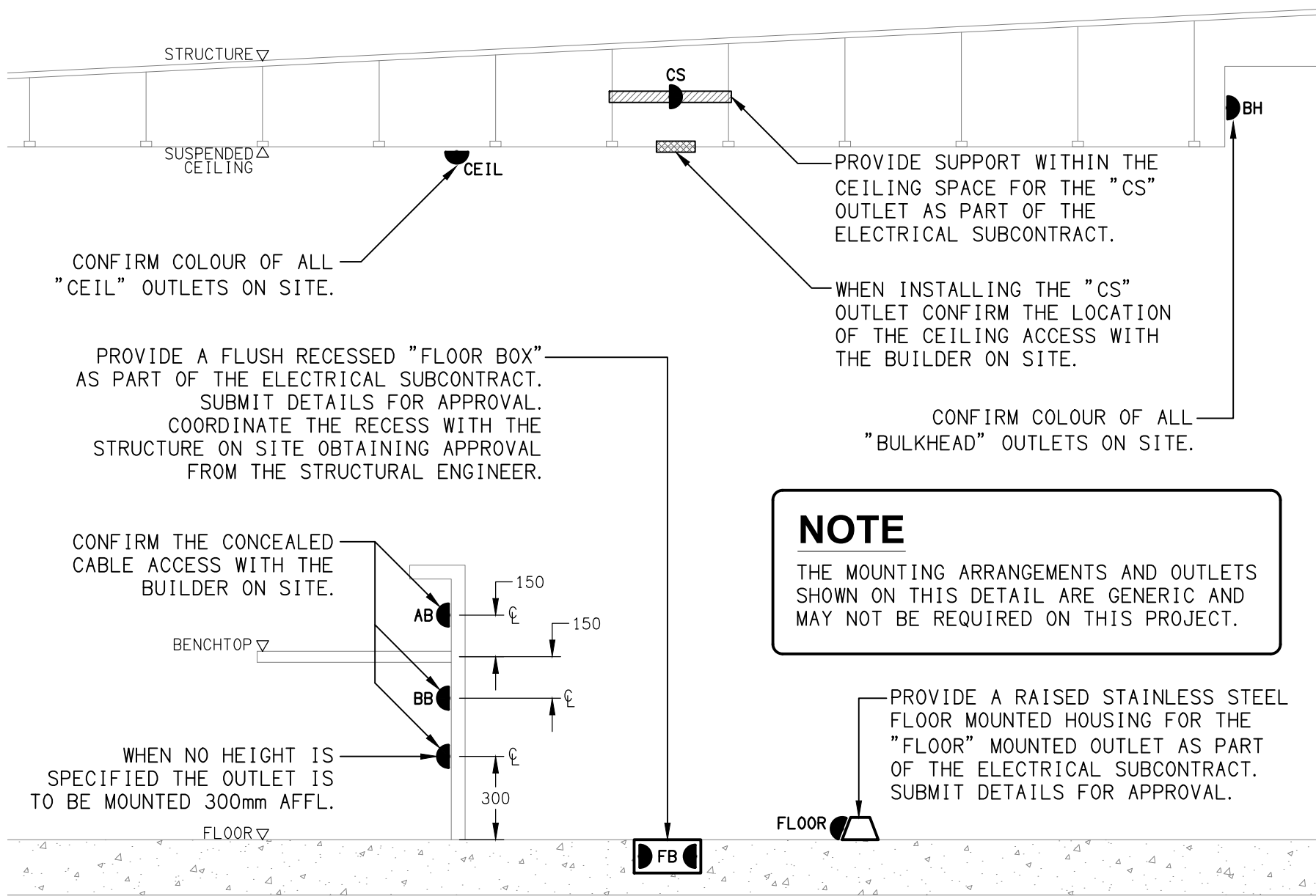
C3613a-0002(B).xls

THE LIGHT FITTING SUPPLIER CONTACT DETAILS MAY BE AVAILABLE ON THE EDG WEBSITE VIA THE FOLLOWING LINK  
[www.edg.net.au/Links/Lighting.htm](http://www.edg.net.au/Links/Lighting.htm)

TYPE	LAMPS	DESCRIPTION	COLOUR / ACCESSORY	CATALOGUE No	REV
CIRCUIT DB-B - P3		PROVIDE CIRCUIT DB-B -P3 AS A NEW 20 AMP RCBO PROTECTED 2.5MM SINGLE PHASE CIRCUIT FROM DISTRIBUTION BOARD DB-B.			B
CIRCUIT DB-B - P4		PROVIDE CIRCUIT DB-B -P4 AS A NEW 20 AMP RCBO PROTECTED 2.5MM SINGLE PHASE CIRCUIT FROM DISTRIBUTION BOARD DB-B.			B
CIRCUIT DB-B - P5		PROVIDE CIRCUIT DB-B -P5 AS A NEW 20 AMP RCBO PROTECTED 2.5MM SINGLE PHASE CIRCUIT FROM DISTRIBUTION BOARD DB-B.			B
CIRCUIT DB-B - P6		PROVIDE CIRCUIT DB-B -P6 AS A NEW 32 AMP RCBO PROTECTED 6MM THREE PHASE CIRCUIT FROM DISTRIBUTION BOARD DB-B.			B
CIRCUIT DB-B - L1		PROVIDE CIRCUIT DB-B -L1 AS A NEW 20 AMP RCBO PROTECTED 2.5MM SINGLE PHASE CIRCUIT FROM DISTRIBUTION BOARD DB-B.			B
SECURITY EQUIPMENT		SECURITY SYSTEM PANELS TO BE UPGRADED AND EXPANDED AS NECESSARY TO ACCOMMODATE THE ADDITIONAL DETECTORS AND ACCESS CONTROL POINTS.			A
SECURITY INTRUDER DETECTOR		DUAL-TECHNOLOGY MOVEMENT DETECTORS WALL MOUNTED AS PER THE MANUFACTURER'S SPECIFICATION. CONNECT TO THE LOCAL SECURITY EQUIPMENT WITH ONE DETECTOR PER ZONE. PROGRAM THE SECURITY SYSTEM AS REQUIRED TO ACCOMMODATE THE NEW DETECTORS AND CHANGES TO THE SATISFACTION OF THE SCHOOL.			A

LEGEND

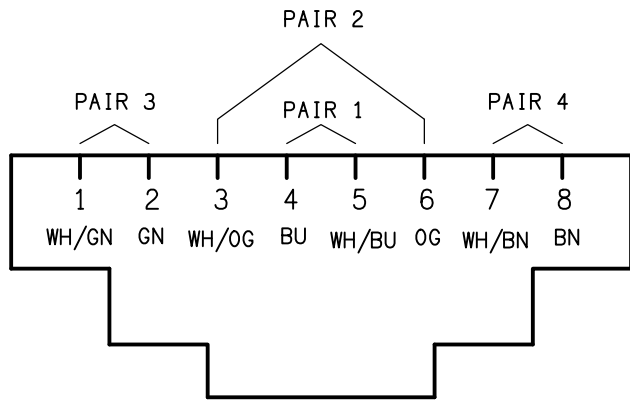
- ELECTRICAL SERVICES SWITCHBOARD.
- SWITCHBOARD / CONTROL PANEL NOT PROVIDED AS PART OF THE ELECTRICAL SUBCONTRACT.
- SINGLE POWER OUTLET.
- DOUBLE POWER OUTLET.
- SPECIAL PURPOSE POWER OUTLET.
- SINGLE PHASE ISOLATOR.
- THREE PHASE ISOLATOR.
- ONE-WAY LIGHT SWITCH.
- TWO-WAY LIGHT SWITCH.
- DALI LIGHT SWITCH.
- CIRCUIT LINE.
- SWITCH LINE.
- POWER CIRCUIT DESIGNATION.  
DENOTES DB AND CIRCUIT.
- ELECTRICAL EQUIPMENT AS NOTED.
- RJ45 COMMUNICATIONS OUTLET.
- SECURITY DIRECTIONAL MOTION DETECTOR.
- PA MULTI-TAP CONE SPEAKER.
- SMOKE ALARM.
- REFER TO DETAIL NOTED FOR THE AREA SHOWN HATCHED.  
ADDITIONAL OUTLETS & FITTINGS MAY BE SHOWN ON DETAIL.
- E1: RECESSED LED EMERGENCY LIGHT.
- E2: WALL MOUNTED LED EMERGENCY LIGHT.
- EX: EMERGENCY LED EXIT LIGHT.
- L1: 300 x 1200 LED FLAT PLATE FITTING.
- L2: RECESSED DOWNLIGHT, DIMMABLE.
- L3: RECESSED DOWNLIGHT.
- L4: RECESSED DOWNLIGHT.
- L5: RECESSED ADJUSTABLE DOWNLIGHT.



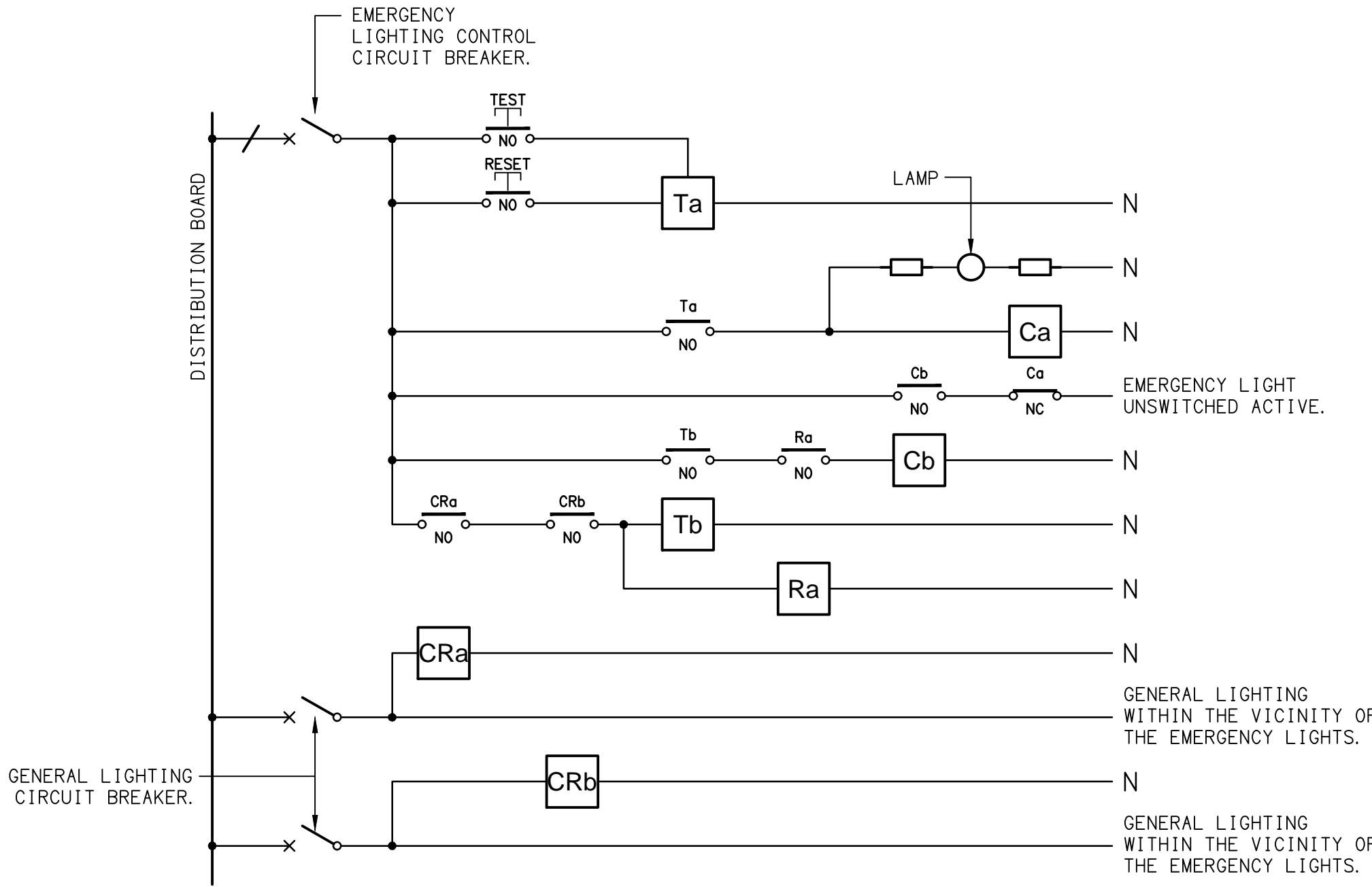
DETAIL  
TYPICAL OUTLET MOUNTINGS  
NOT TO SCALE

EQUIPMENT:

- TEST – TEST PUSH BUTTON MOUNTED ON THE DISTRIBUTION BOARD ESCUTCHEON.
- RESET – RESET PUSH BUTTON MOUNTED ON THE DISTRIBUTION BOARD ESCUTCHEON.
- LAMP – AMBER TEST INDICATING LAMP MOUNTED ON THE DISTRIBUTION BOARD ESCUTCHEON.
- To – ADJUSTABLE 0–3 HOUR TIMED RELAY.
- Tb – 15 MINUTE RUN-ON TIMER TO OPERATE UPON THE RETURN OF MAINS POWER.
- Cx – CONTACTOR x.
- CRx – CONTROL RELAY x.
- Rx – RELAY x.



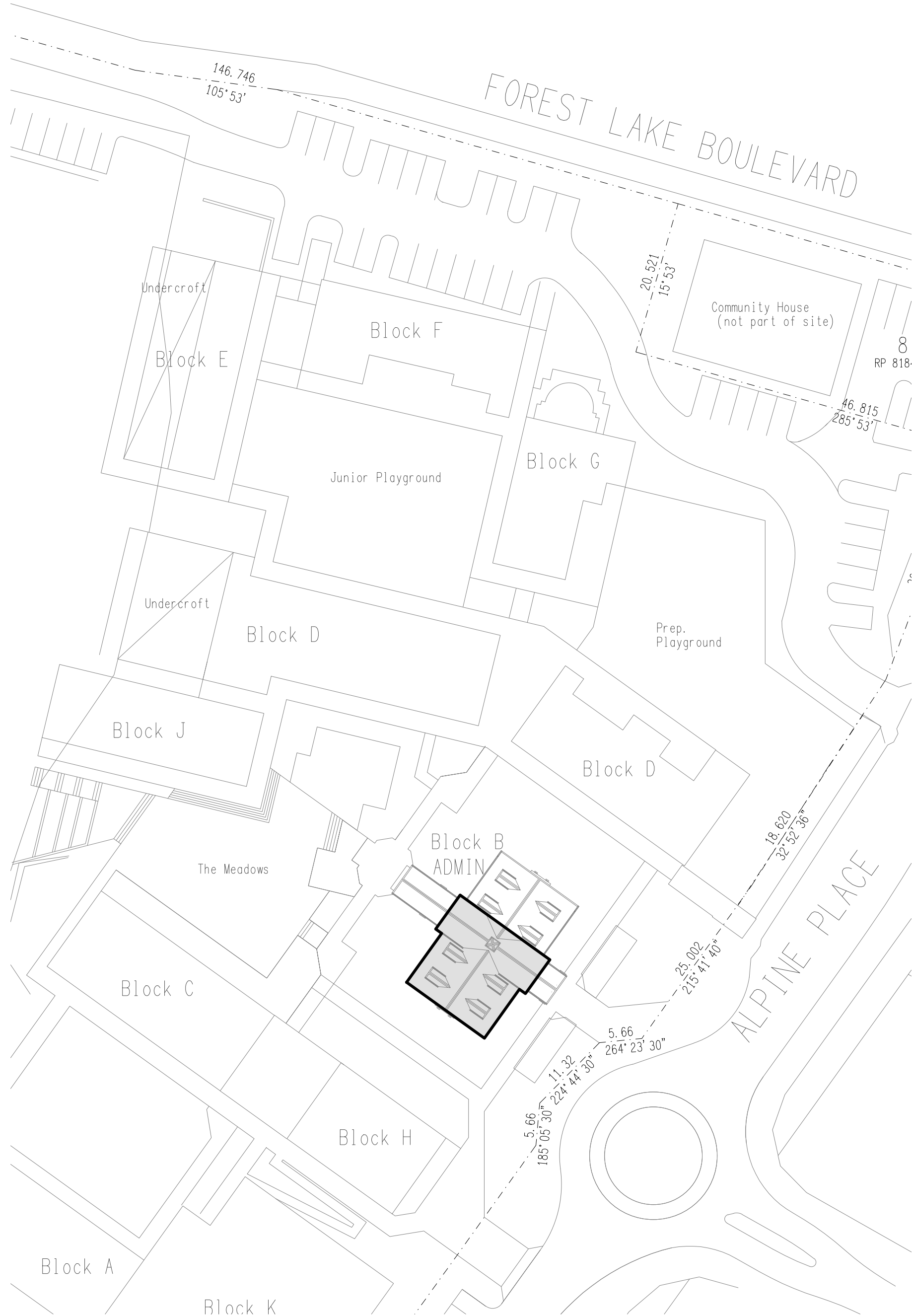
SCHEMATIC  
RJ45 PINOUT CONFIGURATION  
NOT TO SCALE



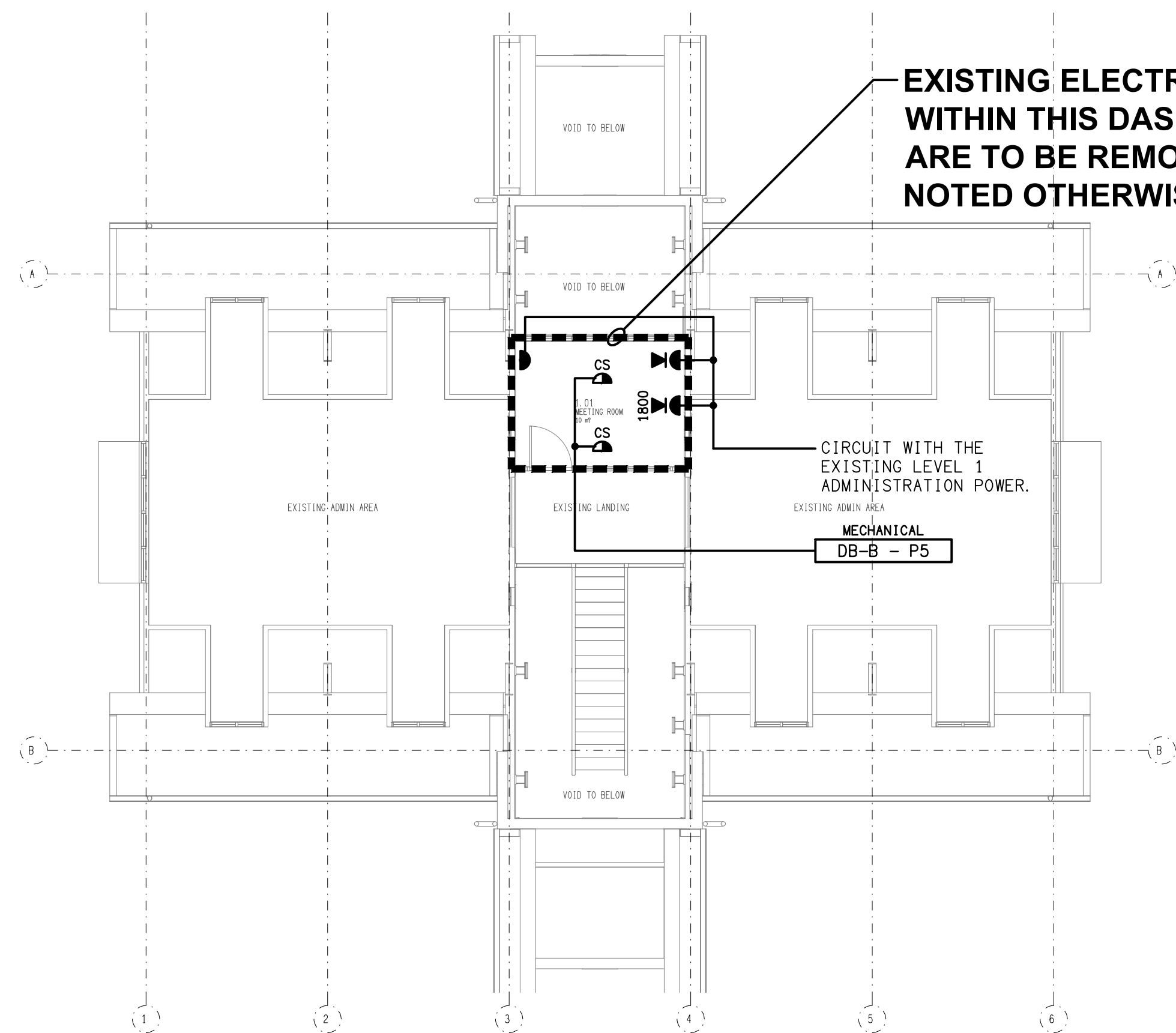
NOTES

1. THE EMERGENCY LIGHT UNSWITCHED ACTIVE / GENERAL LIGHTING SWITCHED ACTIVE CIRCUIT ARRANGEMENT AND CONTROL IS TYPICAL FOR ALL CIRCUITS SUPPLYING EMERGENCY LIGHTS.
2. PROVIDE ADDITIONAL CONTROL RELAYS (CRx) CONFIGURED AS PER CRa AND CRb FOR ALL ADDITIONAL LIGHTING CIRCUITS THAT SUPPLY LIGHTS IN THE VICINITY OF THE EMERGENCY LIGHTS.

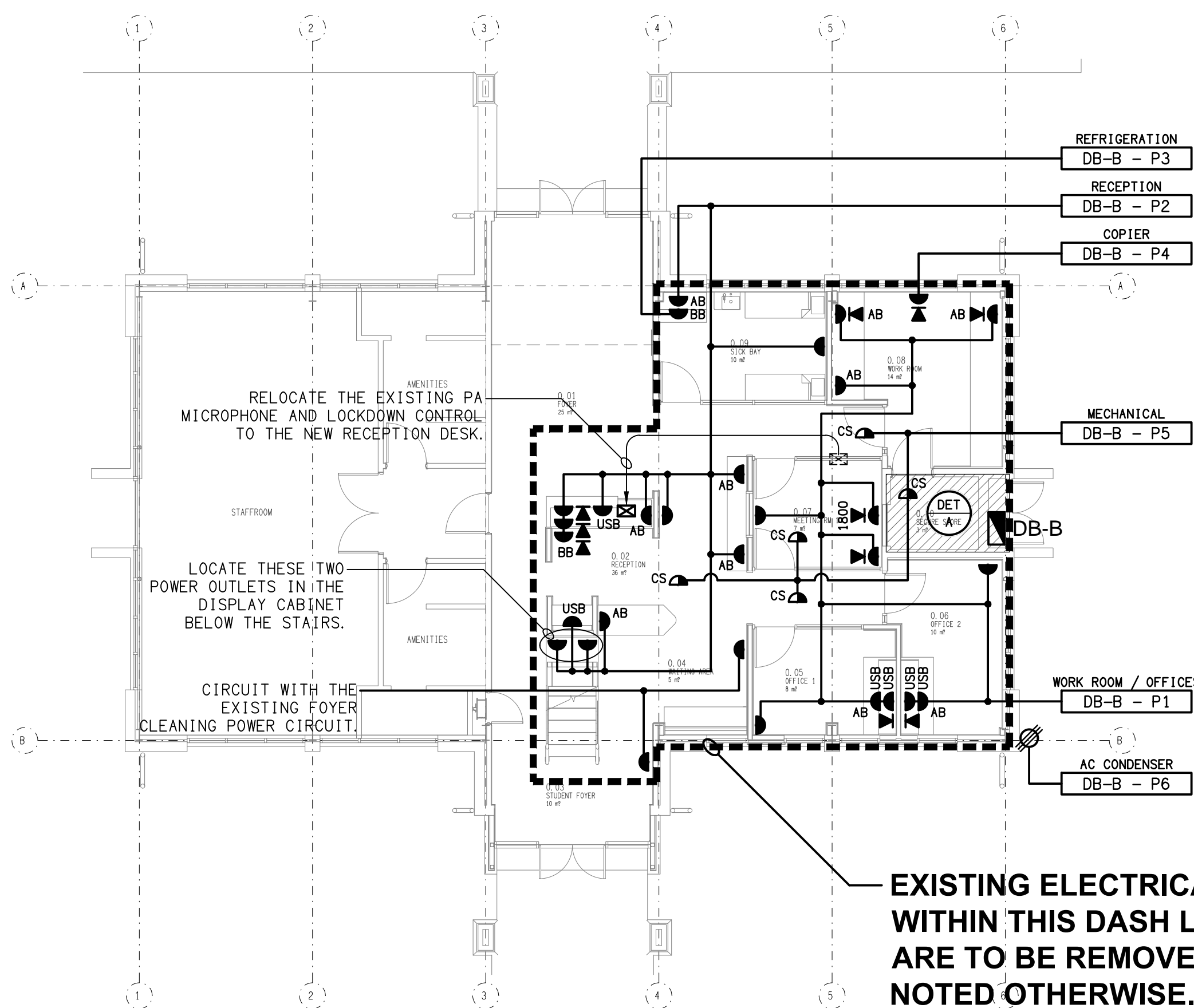
SCHEMATIC  
EMERGENCY LIGHTING  
NOT TO SCALE



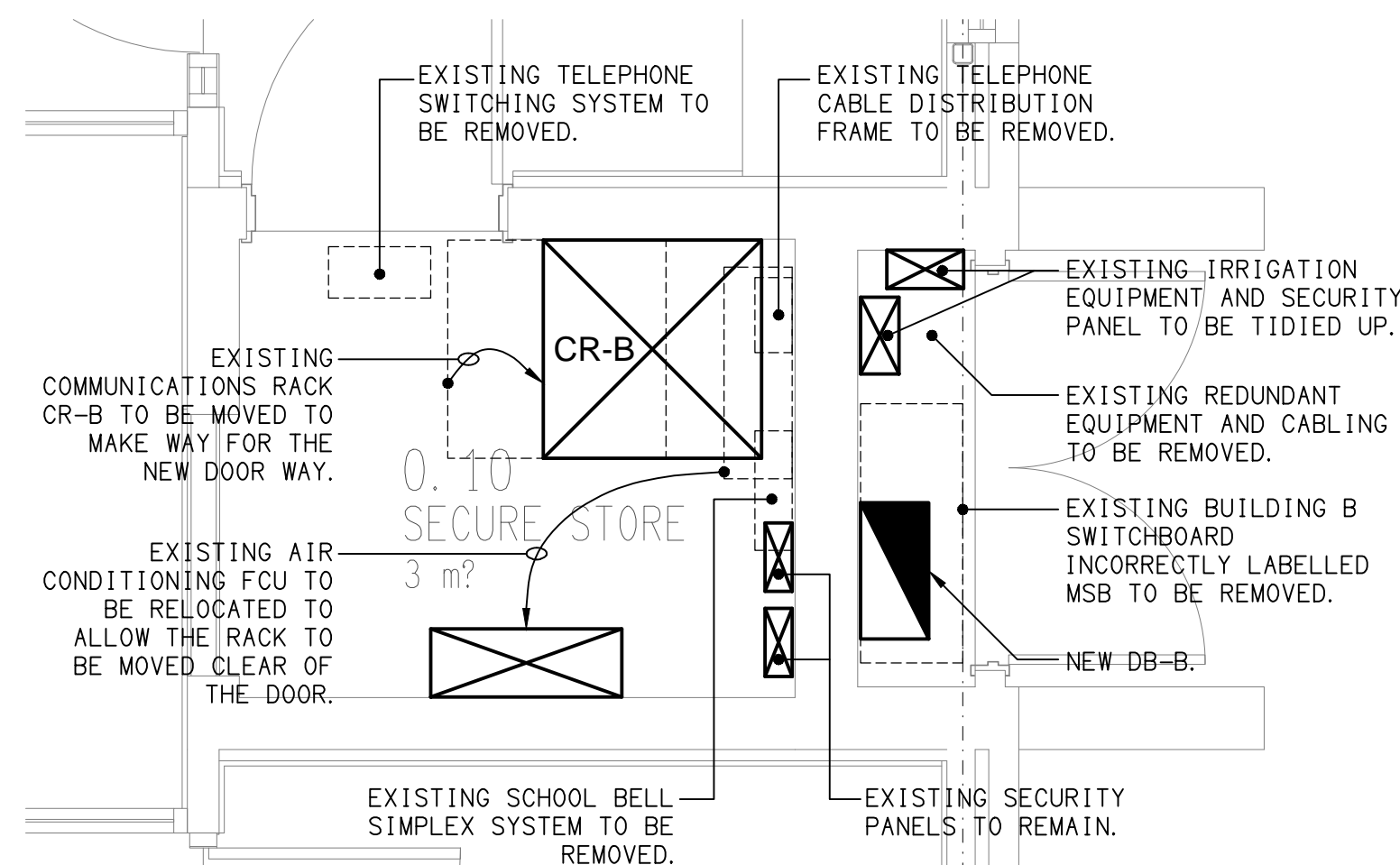
SITE PLAN  
ADMINISTRATION BUILDING UPGRADE  
SCALE 1:500



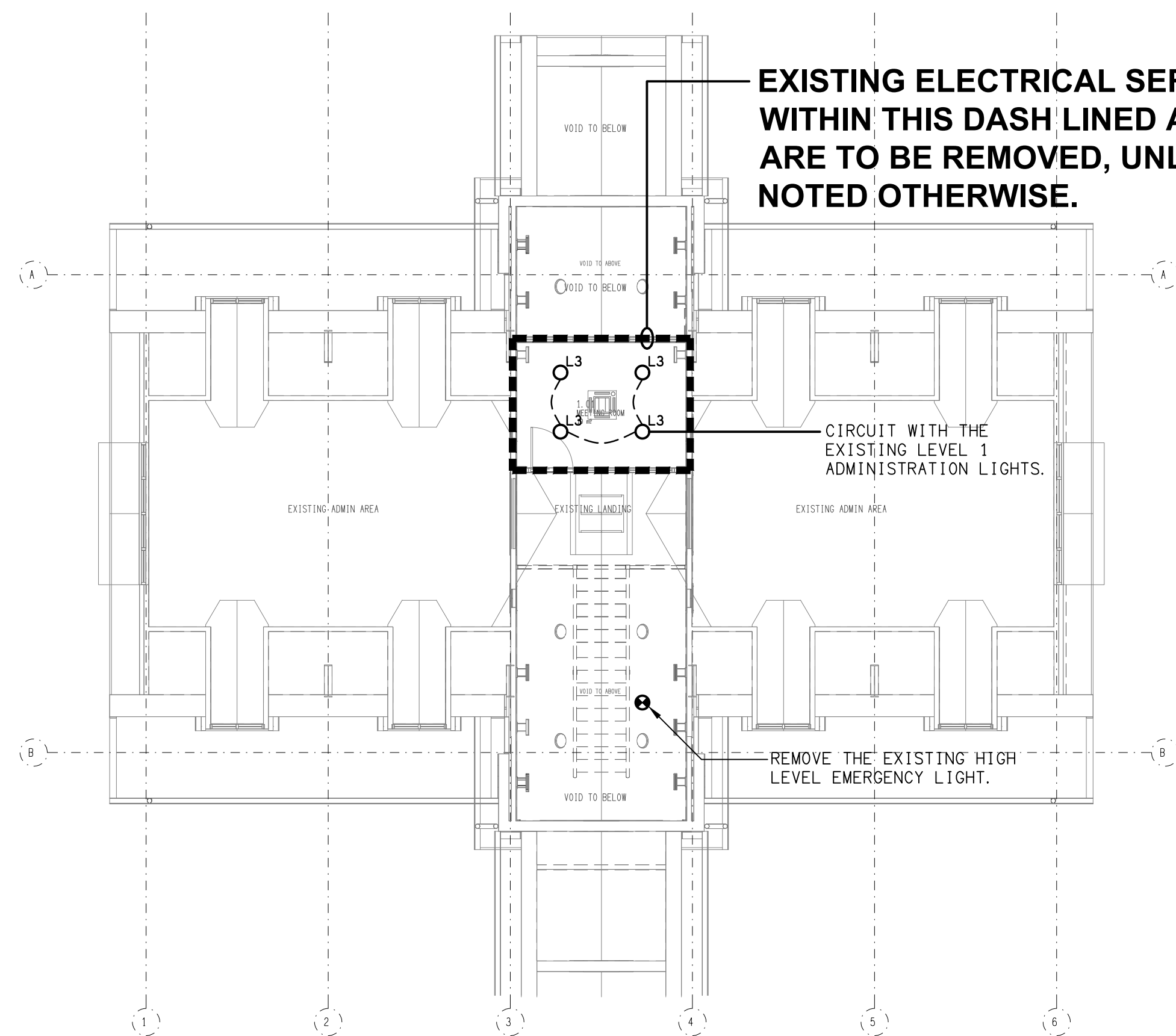
**LEVEL 1**  
FLOOR PLAN  
SCALE 1: 100



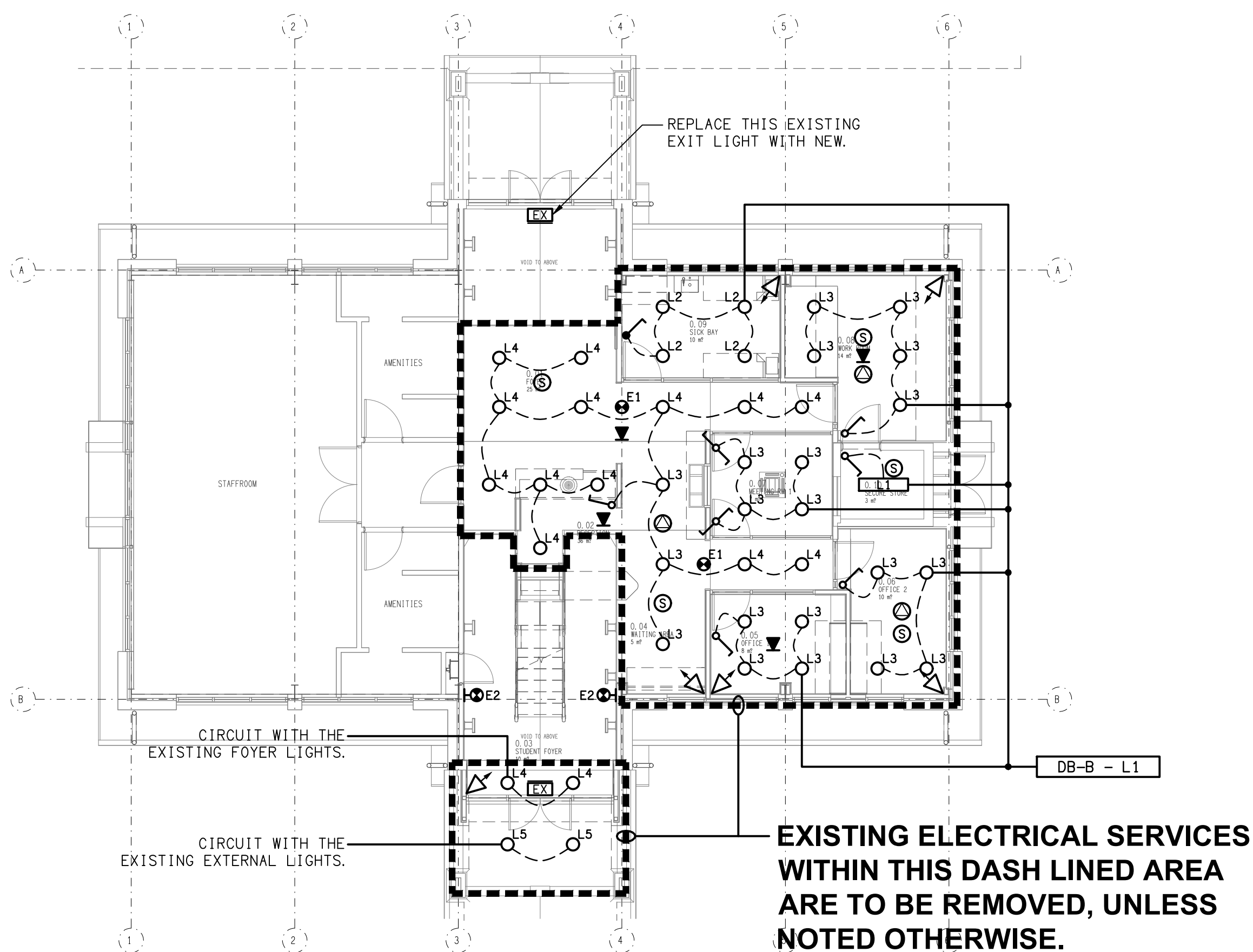
**GROUND LEVEL**  
FLOOR PLAN  
SCALE 1: 100



**DETAIL A**  
SECURITY STORE RECONFIGURATION  
SCALE 1: 25



**LEVEL 1**  
REFLECTED CEILING PLAN  
SCALE 1: 100



**GROUND LEVEL**  
REFLECTED CEILING PLAN  
SCALE 1: 100

ELECTRICAL DESIGN GROUP BRISBANE  
PTY LTD  
ACN 092 710 793  
TRADING AS:  
ELECTRICAL DESIGN GROUP

THE COPYRIGHT OF THIS DRAWING  
REMAINS THE PROPERTY OF THE  
ELECTRICAL DESIGN GROUP.  
USE FIGURED DIMENSIONS  
IN PREFERENCE TO SCALE.  
ALL DIMENSIONS TO BE  
VERIFIED ONSITE.

**ELECTRICAL DESIGN GROUP**  
ELECTRICAL BUILDING SERVICES CONSULTANTS  
BRISBANE GOLD COAST

P.O.Box 15, Sherwood Q.4075  
Phone: (07) 3278 4375  
Email: brisbane@edg.net.au  
Web: www.edg.net.au

PROJECT:  
**ST JOHNS ANGLICAN COLLEGE,  
FOREST LAKE - JUNIOR CAMPUS  
ADMINISTRATION UPGRADE**  
ALPINE PLACE, FOREST LAKE, QUEENSLAND

B	TENDER	09/09/2025
REV:	DESCRIPTION:	DATE:

DRAWING:  
**ELECTRICAL SERVICES  
GROUND & LEVEL 1 PLANS**

SCALE:  
1:100

AT A1

PROJECT NO:  
**C3613a**

DRAWING NO:  
**E02**

REVISION:  
**B**



