

C3284a - EAGERS MT GRAVATT - MITSUBISHI & KIA

C3284a-0001(F).xls

ELECTRICAL SERVICES CONTRACT DOCUMENT SCHEDULE

REVISION F - 20 NOVEMBER 2024

ISSUING INFORMATION				DATE OF ISSUE								
			DAY	25	11	14	16	18	20			
			MONTH	09	10	10	10	11	11			
			YEAR	24	24	24	24	24	24			
			REASON FOR ISSUE	P	T	T	T	T	T			
A = APPROVAL C = CONSTRUCTION N = COORDINATION P = PRELIMINARY T = TENDER												

[illegible][illegible]



ELECTRICAL DESIGN GROUP

ELECTRICAL BUILDING SERVICES CONSULTANTS

P.O. Box 15, SHERWOOD Q. 4075

Phone: (07) 3278 4375 Fax: (07) 3716 0222

Web Site: www.edg.net.au Email: brisbane@edg.net.au

C3284a - EAGERS MT GRAVATT - MITSUBISHI & KIA

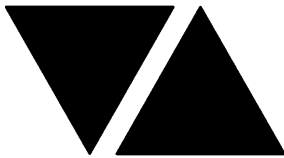
C3284a-0002(C).xls

ELECTRICAL EQUIPMENT SCHEDULE

REVISION C - 18 NOVEMBER 2024

THE EQUIPMENT SUPPLIER CONTACT DETAILS MAY BE AVAILABLE ON THE EDG WEBSITE VIA THE FOLLOWING LINK
www.edg.net.au/links.html

TYPE	LAMPS	DESCRIPTION	COLOUR / ACCESSORY	CATALOGUE No	REV
L1	RED LED	FLUSH RECESSED LED FLEX AS PER THE L1 LIGHTING ELEVATION C/W REMOTE DRIVER / POWER SUPPLY MOUNTING AS PER THE ARCHITECTURAL DETAIL	RED	HAWKO PH VB 1617F C/W SERRATED MOUNTS AS REQUIRED	A
L2	3000K LED 25W / M	FLUSH CEILING RECESSED EXTRUSION C/W OPAL DIFFUSER REMOTE DRIVERS	POWDER COATED	HAWKO H3535RC	A
L3	3000K LED 25W / M	FLUSH RECESSED EXTRUSION C/W OPAL DIFFUSER RUNNING VERTICALLY AS PER THE ELEVATIONS. ALLOW THE L3 TO BE CURVED AND RUN INTO THE L2 ABOVE REMOTE DRIVERS	POWDER COATED	HAWKO H3535RC	A
L4	2 X 22W 4000K LED EACH	TWO HEAD RECTANGULAR DOWNLIGHT FITTING C/W REMOTE DRIVER MOUNT THE FITTING IN THE CEILING RECESS	BLACK	GAMMA ILLUMINATION SNOVO 1607-2L*4K*22W	A
L5	60W 4000K LED	RECESSED ADJUSTABLE SQUARE DOWNLIGHT C/W REMOTE DRIVER	BLACK	GAMMA ILLUMINATION LEPLEX 1082-VWFL-4K-60W	C
L6	28W 4000K LED	RECESSED ADJUSTABLE SQUARE DOWNLIGHT C/W REMOTE DRIVER	BLACK	GAMMA ILLUMINATION LEPLEX 1080-WFL-4K-28W	C
L7	60W LED 3000K	SUSPENDED PENDANT	HIGH GLOSS BLACK	EQUAL TO CARAVAGGIO P3	A
L8	3750 LUMEN 4000K LED	600 X 600 LAY IN FLAT PLATE LED FITTING C/W REMOTE DRIVER MOUNTED IN THE CEILING T BAR	WHITE TRIM	SAL LIGHTING S9784/606TC/DP2	A
L9	3750 LUMEN 4000K LED	600 X 600 LAY IN FLAT PLATE LED FITTING C/W REMOTE DRIVER AND A PB RECESS KIT	WHITE TRIM	SAL LIGHTING S9784/606TC/DP2 + PB KIT	A
L10	2000 LUMEN 4000K LED	RECESSED DOWNLIGHT C/W REMOTE DRIVER	WHITE TRIM	EQUAL TO FAGERHULT PLEIAD 165	A
L11	1200LUMENS 4000K LED	RECESSED DOWNLIGHT C/W REMOTE DRIVER	WHITE	SAL LIGHTING ECOSTAR S9048TC	A
L12	24W 4000K LED	RECESSED DOWNLIGHT C/W REMOTE DRIVER	WHITE	SAL LIGHTING RENMARK S9083R35TC/DP - 24/35W	A



ELECTRICAL DESIGN GROUP

ELECTRICAL BUILDING SERVICES CONSULTANTS

P.O. Box 15, SHERWOOD Q. 4075

Phone: (07) 3278 4375 Fax: (07) 3716 0222

Web Site: www.edg.net.au Email: brisbane@edg.net.au

C3284a - EAGERS MT GRAVATT - MITSUBISHI & KIA

C3284a-0002(C).xls

ELECTRICAL EQUIPMENT SCHEDULE

REVISION C - 18 NOVEMBER 2024

THE EQUIPMENT SUPPLIER CONTACT DETAILS MAY BE AVAILABLE ON THE EDG WEBSITE VIA THE FOLLOWING LINK
www.edg.net.au/links.html

TYPE	LAMPS	DESCRIPTION	COLOUR / ACCESSORY	CATALOGUE No	REV
L13	16W / M 5700K LED CRI 90	ROD SUSPENDED RECTANGULAR EXTRUSION C/W INTEGRAL DRIVER AND OPAL DIFFUSER	SILVER	HAWKO H5075C	C
L14	60W 4000K LED	RECESSED 54 DEG DOWNLIGHT C/W REMOTE DRIVER	WHITE	EQUAL TO GAMMA ILLUMINATION COBALT 1444-3K-60W	A
L15	40W 4000K LED	REPLACE THE EXISTING EXTERNAL WALL LIGHTS WITH NEW FITTINGS WITH THE POSITION S ADJUSTED TO REFLECT THE NEW WALL LAYOUT. UTILISE THE EXISTING CIRCUIT TO SUPPLY THE NEW L15 FITTINGS.	BLACK	RAPID HORNET-40	C
L16	180W 4000K LED	REPLACE THE EXISTING CARPARK LIGHTS UTILISING THE EXISTING POLES . PROVIDE THE NECESSARY MOUNTING BRACKETS TO ALLOW THE NEW FITTINGS TO BE MOUNTED ON THE EXISTING POLES	BLACK	RAPID MAVERICK 180 - R10504	C
E1	LED	EMERGENCY LIGHT: RECESSED NON-MAINTAINED EMERGENCY LIGHT. AS2293 CLASSIFICATION C0-D40 - C90-D40.	WHITE	CLEVERTRONICS CLIFE-BKL	A
E2	LED	EMERGENCY LIGHT: RECESSED NON-MAINTAINED EMERGENCY LIGHT. AS2293 CLASSIFICATION C0-D40 - C90-D40.	BLACK	CLEVERTRONICS CLIFE	A
EX	LED	EXIT LIGHT: MAINTAINED 24M VIEWING DISTANCE EXIT LIGHT C/W DIFFUSERS & DIRECTIONAL ARROWS AS SHOWN AND A IP56 HOUSING CEILING OR WALL MOUNT BETWEEN 2100mm & 2700mm AFFL IF THERE IS NO VERTICAL SURFACE TO MOUNT THE FITTING ON WITHIN THIS RANGE CONFIRM THE MOUNTING HEIGHT WITH THE ENGINEER. AS2293 CLASSIFICATION C0- D3.2 - C90-E2.	WHITE LOGO GREEN BACKGROUND WHITE BODY	CLEVERTRONICS LUB PRO SM	A
EX BK	LED	EXIT LIGHT: MAINTAINED 24M VIEWING DISTANCE EXIT LIGHT C/W DIFFUSERS & DIRECTIONAL ARROWS AS SHOWN AND A IP56 HOUSING CEILING OR WALL MOUNT BETWEEN 2100mm & 2700mm AFFL IF THERE IS NO VERTICAL SURFACE TO MOUNT THE FITTING ON WITHIN THIS RANGE CONFIRM THE MOUNTING HEIGHT WITH THE ENGINEER. AS2293 CLASSIFICATION C0- D3.2 - C90-E2.	WHITE LOGO GREEN BACKGROUND BLACK BODY	CLEVERTRONICS LUB PRO SM BLK	A
ONE-WAY LIGHT SWITCH		ONE-WAY LIGHT SWITCH C/W CIRCUIT IDENTIFICATION ON THE FACEPLATE BEHIND THE SURROUND MOUNTED AT 1000mm AFFL UNLESS NOTED OTHERWISE.	WHITE	CLIPSAL C2000 SERIES FACEPLATE	A
LIGHTING CONTROL SWITCH PANEL (SP1)		WALL MOUNTED MULTI GANG SWITCH PANEL TO CONTAIN LABELLED SWITCHES AS PER THE SP1 DETAIL. PROVIDE BLACK ENGRAVING ON THE FACEPLATE TO INDICATE THE SWITCH USE. PROVIDE A SHOP DRAWING OF SP1 FOR APPROVAL.	STAINLESS STEEL	CLIPSAL B SERIES	A

C3284a-0002(C).xls

Pages inc. any attach. 2 of 4



ELECTRICAL DESIGN GROUP

ELECTRICAL BUILDING SERVICES CONSULTANTS

P.O. Box 15, SHERWOOD Q. 4075

Phone: (07) 3278 4375 Fax: (07) 3716 0222

Web Site: www.edg.net.au Email: brisbane@edg.net.au

C3284a - EAGERS MT GRAVATT - MITSUBISHI & KIA

C3284a-0002(C).xls

ELECTRICAL EQUIPMENT SCHEDULE

REVISION C - 18 NOVEMBER 2024

THE EQUIPMENT SUPPLIER CONTACT DETAILS MAY BE AVAILABLE ON THE EDG WEBSITE VIA THE FOLLOWING LINK
www.edg.net.au/links.html

TYPE	LAMPS	DESCRIPTION	COLOUR / ACCESSORY	CATALOGUE No	REV
LIGHTING CONTROL SWITCH PANEL (SP2)		WALL MOUNTED MULTI GANG SWITCH PANEL TO CONTAIN LABELLED SWITCHES AS PER THE SP2 DETAIL. PROVIDE BLACK ENGRAVING ON THE FACEPLATE TO INDICATE THE SWITCH USE. PROVIDE A SHOP DRAWING OF SP2 FOR APPROVAL.	STAINLESS STEEL	CLIPSAL B SERIES	A
LIGHTING CONTROL SWITCH PANEL (SP3)		WALL MOUNTED MULTI GANG SWITCH PANEL TO CONTAIN LABELLED SWITCHES AS PER THE SP3 DETAIL. PROVIDE BLACK ENGRAVING ON THE FACEPLATE TO INDICATE THE SWITCH USE. PROVIDE A SHOP DRAWING OF SP3 FOR APPROVAL.	STAINLESS STEEL	CLIPSAL B SERIES	A
CHANNEL x		CONTROL CHANNEL WITH A NUMERICAL REFERENCE. REFER TO THE POWER AND LIGHTING CONTROL SCHEMATIC / SCHEDULE			A
SINGLE POWER OUTLET		SINGLE POWER OUTLET C/W CIRCUIT IDENTIFICATION ON THE FACEPLATE BEHIND THE SURROUND MOUNT AT 300 AFFL U.N.O.	WHITE	CLIPSAL C2000 SERIES	A
DOUBLE POWER OUTLET		DOUBLE POWER OUTLET C/W CIRCUIT IDENTIFICATION ON THE FACEPLATE BEHIND THE SURROUND MOUNT AT 300 AFFL U.N.O	WHITE	CLIPSAL C2000 SERIES	A
TABLE POWER OUTLET (TPO)		DOUBLE 10 AMP POWER OUTLET C/W USB-A AND USB-C CHARGING PORTS MOUNTED INTO THE TOP OF THE TABLE AS PER THE ARCHITECTURAL DETAIL	WHITE	OE ELSAFE PIP 3 649006	A
EV CHARGER (EVC)		CONNECT THE 80AMP SUPPLY TO THE KIA EV CHARGER AS PER THE EV CHARGER INSTRUCTIONS			A
8 INCH 15 WATT RECESSED BACKGROUND MUSIC SPEAKER		NEW BACKGROUND MUSIC RECESSED 8 INCH DUAL CONE SPEAKER C/W 100V MULTI-TAP TRANSFORMER AND FLUSH GRILLE. CABLE THE SPEAKERS TOGETHER IN THE NOMINATED ZONE WIRED BACK TO THE RACK CR-A	WHITE UNLESS NOTED AS BLACK	AUDIO TELEX QF8CS BLACK AS REQUIRED	C
CAT 6 COMMUNICATIONS OUTLET		RJ45 CAT-6 COMMUNICATIONS OUTLET, CABLED BACK TO THE COMMUNICATIONS RACK CR-A TERMINATED ONTO FACILITY PATCH PANELS VIA 4-PAIR CAT-6 UTP CABLE. MOUNT UP TO 3 RJ45 OUTLETS PER MULTI-GANG FACEPLATE WITH SEPARATE PERMANENT LABELLING FOR EACH OUTLET. MOUNT AT 300 AFFL U.N.O.	WHITE GENERAL WORKSHOP BLACK	CLIPSAL C2000 SERIES KRONE JACK C/W SHUTTER	A
DB-1		UPGRADE THE EXISTING DISTRIBUTION BOARD DB-1 AS NECESSARY TO ACCOMMODATE THE CIRCUIT MODIFICATIONS AND ADDITIONS REFER TO THE NOTES AND DISTRIBUTION BOARD DB-1 SCHEDULE FOR ADDITIONAL INFORMATION AND REQUIREMENTS. REMOVE ALL EXISTING CIRCUITS AND CABLING MADE REDUNDANT BY THE WORKS.			A
DB-2		UPGRADE THE EXISTING DISTRIBUTION BOARD DB-2 AS NECESSARY TO ACCOMMODATE THE CIRCUIT MODIFICATIONS AND ADDITIONS REFER TO THE NOTES AND DISTRIBUTION BOARD DB-2 SCHEDULE FOR ADDITIONAL INFORMATION AND REQUIREMENTS. REMOVE ALL EXISTING CIRCUITS AND CABLING MADE REDUNDANT BY THE WORKS.			A



ELECTRICAL DESIGN GROUP

ELECTRICAL BUILDING SERVICES CONSULTANTS

P.O. Box 15, SHERWOOD Q. 4075

Phone: (07) 3278 4375 Fax: (07) 3716 0222

Web Site: www.edg.net.au Email: brisbane@edg.net.au

C3284a - EAGERS MT GRAVATT - MITSUBISHI & KIA

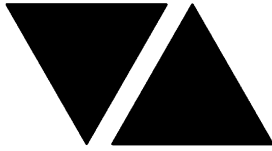
C3284a-0002(C).xls

ELECTRICAL EQUIPMENT SCHEDULE

REVISION C - 18 NOVEMBER 2024

THE EQUIPMENT SUPPLIER CONTACT DETAILS MAY BE AVAILABLE ON THE EDG WEBSITE VIA THE FOLLOWING LINK
www.edg.net.au/links.html

TYPE	LAMPS	DESCRIPTION	COLOUR / ACCESSORY	CATALOGUE No	REV
DB-3		UPGRADE THE EXISTING DISTRIBUTION BOARD DB-3 AS NECESSARY TO ACCOMMODATE THE CIRCUIT MODIFICATIONS AND ADDITIONS REFER TO THE NOTES AND DISTRIBUTION BOARD DB-3 SCHEDULE FOR ADDITIONAL INFORMATION AND REQUIREMENTS. REMOVE ALL EXISTING CIRCUITS AND CABLING MADE REDUNDANT BY THE WORKS.			A
MSB		REPLACE THE EXISTING CARPARK MSB AND PROPERTY POLE WITH A NEW 3 PHASE 80A MSB AND PROPERTY POLE REFER TO THE MSB SCHEMATIC AND NOTES FOR ADDITIONAL INFORMATION AND REQUIREMENTS. PROVIDE A SHOP DRAWING OF THE MSB FOR APPROVAL.			A
MSSB		SHOWROOM MECHANICAL SERVICES SWITCHBOARD PROVIDED BY THE MECHANICAL SUB CONTRACTOR. COORDINATE THE SUBMAIN CONNECTION WITH THE MECHANICAL SUB CONTRACTOR ON SITE.			A
FLOOR BOX (FB1)		INSITU FLUSH FLOOR BOX C/W A DOUBLE GPOS+ 2 COMMUNICATIONS OUTLETS ON THE SAME FACEPLATE . PROVIDE A 32 DIA CONDUIT C/W A SPARE DRAW WIRE FROM THE REAR OF THE COMMUNICATIONS FACEPLATE TO THE CEILING SPACE ABOVE THE COMMUNICATIONS RACK CR-A. PROVIDE THE GPOS AND COMMUNICATIONS OUTLETS AS PER THE STANDARD DESCRIPTIONS.	STAINLESS STEEL	ECD FB2SHD	A
FLOOR BOX (FB2)		EXISTING FLOOR BOX TO REMAIN AS IS			A
SIGN OUTLET		COORDINATE THE LOCATION AND CONNECTION WITH THE SIGN CONTRACTOR ENSURING THE GPO / ISOLATORS ARE PROVIDED WITH APPROPRIATE WEATHER PROTECTION AND ARE CONCEALED FROM VIEW.			A
COMMUNICATIONS RACK CR-A		REMOVE THE EXISTING 110CABLING SYSTEM AND PROVIDE A NEW FULL HEIGHT 19 INCH RACK C/W CAT 6 PATCH PANELS TO ACCOMMODATE THE THE RECONNECTION OF THE EXISTING AND NEW COMMUNICATION CABLING . REMOVE ALL REDUNDANT CABLING AND 110 SYSTEM.			C



ELECTRICAL DESIGN GROUP

ELECTRICAL BUILDING SERVICES CONSULTANTS

P.O. Box 15, SHERWOOD Q. 4075

Phone: (07) 3278 4375 Fax: (07) 3716 0222

Web Site: www.edg.net.au Email: brisbane@edg.net.au

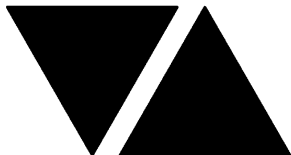
C3284a - EAGERS MT GRAVATT - MITSUBISHI & KIA

C3284a-0004(C).xls

DISTRIBUTION BOARD DB-1

REVISION C - 18 NOVEMBER 2024

							REV
MODIFY THE EXISTING DISTRIBUTION BOARD TO ACCOMMODATE THE FOLLOWING CIRCUITS. REMOVE ALL SWITCHGEAR THAT BECOMES REDUNDANT AND UPDATE THE SCHEDULE AT PRACTICAL COMPLETION. IT IS ACCEPTABLE TO UTILISE EXISTING CIRCUITS IF THEY ARE IN APPROPRIATE CONDITION AND HAVE SUFFICIENT SPARE CAPACITY							A
CIRC	PH	CIRCUIT BREAKER (amps)	CONTROL EQUIPMENT	CABLE SIZE (mm2)	LOCATION	CIRCUIT USE	
P1	1	20	RCBO	2.5	mitsubishi	PRINTER	A
P2	1	20	RCBO	2.5	mitsubishi	TV	A
P3	1	20	RCBO	2.5	mitsubishi	CLEANING	A
P4	1	20	RCBO	2.5	mitsubishi	FLOOR BOXES	A
P5	1	20	RCBO	2.5	mitsubishi	FLOOR BOXES	A
P6	1	20	RCBO	2.5	mitsubishi	FLOOR BOXES	A
P7	1	20	RCBO	2.5	mitsubishi	AUTO DOOR	A
P8	1	20	RCBO	2.5	mitsubishi	OFFICES	A
P9	1	20	RCBO	2.5	mitsubishi	OFFICES	A
P10	1	20	RCBO	2.5	mitsubishi	OFFICES	A
P11	1	20	RCBO	2.5	mitsubishi	OFFICES	A
P12	1	20	RCBO	2.5	mitsubishi	CLEANING	A
P13	1	20	RCBO	2.5	mitsubishi	AV WALL	A
P14	1	20	RCBO	2.5	mitsubishi	AV WALL	A
P15	1	20	RCBO	2.5	mitsubishi	AV WALL	A
P16	1	20	RCBO	2.5	mitsubishi	JOINERY	A
P17	1	20	RCBO	2.5	KIA	KITCHENETTE	A
P18	1	20	RCBO	2.5	KIA	APPLIANCES	A
P19	1	20	RCBO	2.5	KIA	AUTO BOILER	A
L1	1	20	RCBO PE ON DUSK OFF DAWN	2.5	EXTERNAL	SIGNS	A
L2	1	20	RCBO PE ON DUSK OFF DAWN	2.5	EXTERNAL	SOFFIT LIGHTS	A
L3	1	20	RCBO	2.5	mitsubishi	LIGHTS	A
L4	1	20	RCBO	2.5	mitsubishi	LIGHTS	A
L5	1	20	RCBO	2.5	mitsubishi	LIGHTS	A
L6	1	20	RCBO	2.5	mitsubishi	LIGHTS	A
L7	1	20	RCBO	2.5	mitsubishi	LIGHTS	A
L8	1	20	RCBO	2.5	mitsubishi	LIGHTS	A
L9	1	20	RCBO	2.5	mitsubishi	LIGHTS	A
L10	1	20	RCBO	2.5	mitsubishi	LIGHTS	A
L11	1	20	RCBO	2.5	mitsubishi	LIGHTS	A
L12	1	20	RCBO PE ON DUSK OFF DAWN	2.5	EXTERNAL	SIGNS	B
L13	1	20	RCBO PE ON DUSK OFF DAWN	4.0	EXTERNAL	POLE LIGHTS	C
L14	1	20	RCBO PE ON DUSK OFF DAWN	4.0	EXTERNAL	POLE LIGHTS	C



ELECTRICAL DESIGN GROUP

ELECTRICAL BUILDING SERVICES CONSULTANTS

P.O. Box 15, SHERWOOD Q. 4075

Phone: (07) 3278 4375 Fax: (07) 3716 0222

Web Site: www.edg.net.au Email: brisbane@edg.net.au

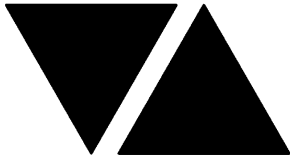
C3284a - EAGERS MT GRAVATT - MITSUBISHI & KIA

C3284a-0005(C).xls

DISTRIBUTION BOARD DB-2

REVISION C - 18 NOVEMBER 2024

							REV
MODIFY THE EXISTING DISTRIBUTION BOARD TO ACCOMMODATE THE FOLLOWING CIRCUITS. REMOVE ALL SWITCHGEAR THAT BECOMES REDUNDANT AND UPDATE THE SCHEDULE AT PRACTICAL COMPLETION. IT IS ACCEPTABLE TO UTILISE EXISTING CIRCUITS IF THEY ARE IN APPROPRIATE CONDITION AND HAVE SUFFICIENT SPARE CAPACITY							A
CIRC	PH	CIRCUIT BREAKER (amps)	CONTROL EQUIPMENT	CABLE SIZE (mm2)	LOCATION	CIRCUIT USE	
P1	1	20	RCBO	2.5	KIA	FLOOR BOXES	A
P2	1	20	RCBO	2.5	KIA	FLOOR BOXES	A
P3	1	20	RCBO	2.5	KIA	AUTO DOOR	A
P4	1	20	RCBO	2.5	KIA	CLEANING	A
P5	1	20	RCBO	2.5	KIA	CLEANING	A
P6	1	20	RCBO	2.5	KIA	TV	A
P7	1	20	RCBO	2.5	KIA	OFFICES	A
P8	1	20	RCBO	2.5	KIA	OFFICES	A
P9	1	20	RCBO	2.5	KIA	FLOOR BOXES	B
P10	1	20	RCBO	2.5	KIA	KITCHENETTE	A
P11	1	20	RCBO	2.5	KIA	APPLIANCES	A
P12	1	20	RCBO	2.5	KIA	AUTO BOILER	A
P13	1	20	RCBO	2.5	KIA	DISPLAY	B
L1	1	20	RCBO PE ON DUSK OFF DAWN	2.5	EXTERNAL	SIGNS	A
L2	1	20	RCBO	2.5	KIA	LIGHTS	A
L3	1	20	RCBO	2.5	KIA	LIGHTS	A
L4	1	20	RCBO	2.5	KIA	LIGHTS	A
L5	1	20	RCBO	2.5	KIA	LIGHTS	A
L6	1	20	RCBO	2.5	KIA	LIGHTS	A
L7	1	20	RCBO	2.5	KIA	LIGHTS	A
L8	1	20	RCBO	2.5	KIA	LIGHTS	A
L9	1	20	RCBO	2.5	KIA	LIGHTS	A
L10	1	20	RCBO PE ON DUSK OFF DAWN	4.0	EXTERNAL	POLE LIGHTS	C



ELECTRICAL DESIGN GROUP

ELECTRICAL BUILDING SERVICES CONSULTANTS

P.O. Box 15, SHERWOOD Q. 4075

Phone: (07) 3278 4375 Fax: (07) 3716 0222

Web Site: www.edg.net.au Email: brisbane@edg.net.au

C3284a - EAGERS MT GRAVATT - MITSUBISHI & KIA

C3284a-0006(C).xls

DISTRIBUTION BOARD DB-3

REVISION C - 16 OCTOBER 2024

							REV
MODIFY THE EXISTING BASEMENT DISTRIBUTION BOARD TO ACCOMMODATE THE FOLLOWING CIRCUITS. REMOVE ALL SWITCHGEAR THAT BECOMES REDUNDANT AND UPDATE THE SCHEDULE AT PRACTICAL COMPLETION. IT IS ACCEPTABLE TO UTILISE EXISTING CIRCUITS IF THEY ARE IN APPROPRIATE CONDITION AND HAVE SUFFICIENT SPARE CAPACITY							A
CIRC	PH	CIRCUIT BREAKER (amps)	CONTROL EQUIPMENT	CABLE SIZE (mm2)	LOCATION	CIRCUIT USE	
P1	1	20	RCBO	2.5	SERVICE	PRINTER	A
P2	1	20	RCBO	2.5	SERVICE	REF	A
P3	1	20	RCBO	2.5	SERVICE	CLEANING	A
P4	1	20	RCBO	2.5	SERVICE	TV	A
P5	1	20	RCBO	2.5	SERVICE	FLOOR BOXES	A
P6	1	20	RCBO	2.5	SERVICE	BRAND DISPLAY	A
P7	1	20	RCBO	2.5	SERVICE	WORK SPACE	A
P8	1	20	RCBO	2.5	SERVICE	KITCHENETTE	A
P9	1	20	RCBO	2.5	SERVICE	AUTO BOILER	A
P10	1	20	RCBO	2.5	SERVICE	HOT DESK	B
L1	1	20	RCBO PE CELL ON DUSK TC OFF 10.00 PM	2.5	EXTERNAL	SIGNS	A
L2	1	20	RCBO PE CELL ON DUSK TC OFF 10.00 PM	2.5	EXTERNAL	SIGNS	C

LEGEND

	ELECTRICAL SERVICES SWITCHBOARD.
	SWITCHBOARD / CONTROL PANEL NOT PROVIDED AS PART OF THE ELECTRICAL SUBCONTRACT.
	SINGLE POWER OUTLET.
	DOUBLE POWER OUTLET.
	SPECIAL PURPOSE POWER OUTLET.
	SIGNAGE CONNECTION.
	NEW ELECTRICAL FLOOR BOX.
	EXISTING ELECTRICAL FLOOR BOX TO REMAIN AS IS.
	LIGHTING CONTROL SWITCH PANEL 1.
	LIGHTING CONTROL SWITCH PANEL 2.
	LIGHTING CONTROL SWITCH PANEL 3.
	ELECTRIC VEHICLE CHARGING UNIT.
	TABLE POWER OUTLETS.
	ONE-WAY LIGHT SWITCH.
	ELECTRICAL EQUIPMENT AS NOTED.
	LIGHTING CONTROL CHANNEL REFERENCE.
	CIRCUIT LINE.
	SWITCH LINE.
	POWER CIRCUIT DESIGNATION. DENOTES DB AND CIRCUIT.
	RJ45 CAT 6 COMMUNICATIONS OUTLET.
	RJ45 CAT 6 CCTV OUTLET.
	BACKGROUND MUSIC SPEAKER, WHITE IN COLOUR UNO. Zx DENOTES ZONE AS NOTED. BK DENOTES BLACK IN COLOUR.

LEGEND

	REFER TO DETAIL NOTED FOR THE AREA SHOWN HATCHED. ADDITIONAL OUTLETS & FITTINGS MAY BE SHOWN ON DETAIL.
	E1: NON MAINTAINED LED EMERGENCY LIGHT WHITE.
	E2: NON MAINTAINED LED EMERGENCY LIGHT BLACK.
	EX: MAINTAINED EMERGENCY LED EXIT LIGHT WHITE.
	EX BK: MAINTAINED EMERGENCY LED EXIT LIGHT BLACK.
	L1: KIA LOOP LIGHT RED LED.
	L2: FLUSH CEILING RECESSED CUSTOMER LED EXTRUSION.
	L3: FLUSH WALL RECESSED CUSTOMER LED EXTRUSION.
	L4: KIA SHOWROOM AREA DOUBLE HEAD LED RECESSED DOWN LIGHTS MOUNTED IN CEILING RECESS.
	L5: MITSUBISHI SHOWROOM RECESSED ADJUSTABLE LED DOWNLIGHT BLACK.
	L6: MITSUBISHI SHOWROOM RECESSED ADJUSTABLE LED DOWNLIGHT BLACK.
	L7: MITSUBISHI SALES DESK PENDANT.
	L8: 600 x 600 T BAR LED FLAT PANEL TROFFER.
	L9: 600 x 600 PLASTER BOARD LED FLAT PANEL TROFFER.
	L10: MITSUBISHI OFFICE RECESSED LED DOWNLIGHT WHITE.
	L11: CIRCULATION RECESSED LED DOWNLIGHT WHITE.
	L12: EXTERNAL SOFFIT RECESSED LED DOWNLIGHT WHITE.
	L13: KIA SUSPENDED FEATURE LIGHT.
	L14: KIA DELIVERY RECESSED DOWNLIGHT.
	L15: EXTERNAL WALL MOUNTED AREA LIGHT.
	L16: CARPARK POLE LIGHT.

NOTES

1. EXTENT OF WORKS

THE ELECTRICAL SERVICES SUB-CONTRACT INCLUDES BUT IS NOT LIMITED TO THE FOLLOWING:

- SUPPLY AND INSTALLATION OF ALL COMPONENTS FORMING PART OF THE ELECTRICAL SERVICES.
- INSPECTIONS.
- TESTING AND COMMISSIONING.
- MAINTENANCE.
- CABLING, CABLE SUPPORT SYSTEMS AND ACCESS.
- POWER DISTRIBUTION.
- LIGHTING.
- COMMUNICATIONS CABLING.
- REMOVE ALL EXISTING ELECTRICAL SERVICES MADE REDUNDANT BY THE WORKS.
- THE EXISTING ELECTRICAL SERVICES NOT REFERENCED OR SHOWN ARE TO REMAIN AS IS.
- ALL MINOR COMPONENTS AND INCIDENTAL WORKS NOT SPECIFICALLY REFERRED TO, HOWEVER NECESSARY TO COMPLETE THE ELECTRICAL SERVICES INSTALLATION SUCH THAT IT IS HANDED OVER COMPLETE, OPERATIONAL AND FIT FOR THE INTENDED USE.

PRIOR TO COMMENCING WORK CONSULT SITE MANAGEMENT FOR ANY HAZARDOUS MATERIAL AND OR ASBESTOS REGISTERS AS WELL AS UNDERTAKE A THOROUGH INSPECTION OF THE SITE TO IDENTIFY ANY POTENTIAL HAZARDOUS MATERIALS, ASBESTOS AND HEALTH OR SAFETY RISKS. ADVISE THE CONTRACTOR OF ANY POTENTIAL HAZARDOUS MATERIALS, ASBESTOS AND HEALTH OR SAFETY RISKS IF IDENTIFIED AND DO NOT COMMENCE WORK UNTIL AN APPROPRIATE MANAGEMENT PLAN HAS BEEN DEVELOPED AND AGREED TO BY ALL PARTIES.

SUPPLY ALL LABOUR, MATERIALS, EQUIPMENT, AND ALL OTHER ITEMS, WHETHER MENTIONED IN DETAIL OR NOT, REQUIRED FOR THE SATISFACTORY COMPLETION OF THE ELECTRICAL SERVICES INSTALLATION, LEAVING IN FULL WORKING ORDER TO THE SATISFACTION OF THE PROJECT MANAGER.

ACCEPT FULL RESPONSIBILITY FOR LIASING, ARRANGING AND CO-ORDINATION OF ALL WORKS THAT HAVE AN EFFECT ON OR WILL BE AFFECTED BY THE ELECTRICAL SERVICES.

REFER TO THE EQUIPMENT SCHEDULE FOR ADDITIONAL REQUIREMENTS.

2. WORKMANSHIP

ENSURE THAT THE ELECTRICAL WORK IS PERFORMED BY THE HOLDER OF A CURRENT ELECTRICAL SUB CONTRACTOR LICENSE AND THE SERVICES COVERED BY THE ACMA IS PERFORMED BY THE HOLDER OF THE APPROPRIATE CURRENT ACMA LICENSE. ENSURE THE INSTALLATION AND ALL COMPONENTS, FIXTURES, FITTINGS, OUTLETS AND CABLES ARE SUPPLIED AND INSTALLED TO A HIGH STANDARD THROUGHOUT, AND INSTALLED IN A NEAT AND TRADESMAN LIKE MANNER, TO THE CURRENT INDUSTRY STANDARDS. ENSURE ALL MATERIALS AND COMPONENTS OF A SIMILAR TYPE ARE OF THE SAME MANUFACTURER AND INSTALLED IN A UNIFORM MANNER.

IT IS THE ELECTRICAL SUB CONTRACTOR'S RESPONSIBILITY TO ENSURE THAT THE INSTALLATION IS FIT FOR PURPOSE AND IS PROVIDED AS A COMPLETE WORKING INSTALLATION. IT IS THE ELECTRICAL SUB CONTRACTOR'S RESPONSIBILITY TO PROVIDE ALL COMPONENTS, FITTINGS, FIXTURES, SYSTEMS, PROGRAMMING ETC IRRESPECTIVE OF THE LEVEL DETAILED IN THE DOCUMENTS SUCH THAT THE INSTALLATION IS PROVIDED AS A COMPLETE WORKING INSTALLATION.

CONCEAL ALL WIRING AND CONDUITS. EXPOSED CABLING OR CONDUITS ARE GENERALLY NOT ACCEPTABLE. IT IS NOTED THAT CHASING AND REINSTATEMENT WILL BE REQUIRED. ENSURE ALL COMPONENTS, EQUIPMENT AND MATERIALS SUPPLIED ARE NEW, UNUSED, DESIGNED AND SELECTED TO ENSURE SATISFACTORY OPERATION UNDER VARYING ATMOSPHERIC, CLIMATIC, HUMID TROPICAL CONDITIONS WITHOUT DISTORTION AND DETERIORATION IN ANY PART AFFECTING EFFICIENCY AND RELIABILITY OF THE SYSTEMS. DESIGN AND SELECT ALL EQUIPMENT TO PROVIDE THE NECESSARY SAFETY TO HUMAN LIFE AND PROPERTY DURING OPERATION AND MAINTENANCE WITH PARTICULAR ATTENTION GIVEN TO ELECTRICAL SAFETY AND SEGREGATION PRECAUTIONS.

CHECK THE FINISHED PAINTWORK AROUND THE AREA OF EACH INSTALLATION AND TOUCH UP ALL DAMAGED PARTS AND FINISHES AFTER THE INSTALLATION OF THE ELECTRICAL SERVICES.

ALL WORKS ARE TO BE CARRIED OUT IN ACCORDANCE WITH THE BUILDER'S PROGRAM. ENSURE ALL FINAL LOCATIONS OF OUTLETS AND FITTINGS ARE CO-ORDINATED ONSITE WITH THE ARCHITECT AND ALL OTHER SERVICES, TO THE APPROVAL OF THE PROJECT MANAGER. ALLOW TO CO-ORDINATE THE FINAL LOCATION OF ALL EQUIPMENT, FITTINGS, & OUTLETS, SUCH THAT THEY ARE INSTALLED IN ACCORDANCE WITH THE AS3000 RESTRICTED ZONES, AND ARE NOT COVERED INAPPROPRIATELY.

ENSURE THAT ALL METAL SURFACES ARE SUITABLY PROTECTED AGAINST CORROSION, AND THAT ALL PLASTIC MATERIALS ARE UV STABILISED.

PROVIDE ALL MATERIALS AS NEW, AND OF THE HIGHEST CLASS AVAILABLE FOR THEIR RESPECTIVE TYPES. ENSURE ALL ASPECTS OF THE WORK ARE OF A HIGH STANDARD THROUGHOUT, AND INSTALLED IN A NEAT AND TRADESMAN LIKE MANNER, TO THE CURRENT INDUSTRY STANDARDS.

3. STANDARDS

IRRESPECTIVE OF INFORMATION CONTAINED IN THE ELECTRICAL SERVICES DOCUMENTS OR IN INSTRUCTIONS, IT IS THE ELECTRICAL SUB CONTRACTOR'S RESPONSIBILITY TO ENSURE ALL ELECTRICAL SERVICES WORKS ARE INSTALLED IN ACCORDANCE WITH THE REQUIREMENTS OF THE FOLLOWING. REFER ANY DISCREPANCIES BETWEEN THE REQUIREMENTS OF THE FOLLOWING AND/OR THE ELECTRICAL SERVICES DOCUMENTS AND INSTRUCTIONS TO THE ARCHITECT FOR CLARIFICATION PRIOR TO THE PLACING OF ORDERS, FABRICATION OR INSTALLATION OF THE ITEMS/METHODS IN DISCREPANCY.

- NCC BUILDING CODE OF AUSTRALIA.
- ELECTRICITY ACT.
- ELECTRICAL SAFETY ACT.
- AS/NZS3000.
- AS3008.
- WORKPLACE HEALTH AND SAFETY ACT.
- TELECOMMUNICATIONS ACT.
- ACMA REQUIREMENTS.

4. AUTHORITIES

ENSURE ALL OF THE ELECTRICAL SERVICES COMPLY WITH THE REQUIREMENTS OF ALL REGULATORY AUTHORITIES HAVING JURISDICTION OVER THE SITE INCLUDING BUT NOT LIMITED TO THE FOLLOWING:

- ACMA.
- LOCAL COUNCIL.
- LOCAL SUPPLY AUTHORITY.
- STATE GOVERNMENT DEPARTMENT OF ENVIRONMENT AND HERITAGE.
- QLD GOVERNMENT, DIVISION OF WORKPLACE, HEALTH AND SAFETY.
- QLD FIRE AND EMERGENCY SERVICES.

NOTES

5. CABLES

UNLESS OTHERWISE SPECIFIED, INSTALL AND TERMINATE CABLES IN ACCORDANCE WITH THE MANUFACTURERS' RECOMMENDATIONS. DETERMINE THE FINAL ROUTES TO SUIT THE BUILDING STRUCTURE AND SITE CONDITIONS. UNLESS NOTED OTHERWISE, PROVIDE ALL 240 VOLT POWER AND LIGHTING WIRING AS 2.5mm² TWIN & EARTH STRANDED COPPER CONDUCTORS, PVC INSULATED 0.6/1kV V75 GRADE TO AS3174, PROTECTED BY A 20 AMP CIRCUIT BREAKER. ALL CONDUIT AND FITTINGS TO BE RIGID UPVC TO AS2053, UNLESS NOTED OTHERWISE.

6. POWER DISTRIBUTION

THE POWER DISTRIBUTION COMPONENT OF THIS CONTRACT INCLUDES THE MODIFICATION AND NEW CIRCUITS TO DB-1, DB-2 AND DB-3. UPGRADE THE SALES BUILDING MSB TO ACCOMMODATE A 100AMP MCCB TO SUPPLY THE NEW MSSB.

REFER TO DRAWING G3284A-E02.DWG FOR THE SCOPE OF WORK REGARDING THE CARPARK SITE MSB UPGRADE AND THE PROVISION OF THE KIA EV CHARGER. IT IS ACCEPTABLE TO UTILISE THE EXISTING CIRCUITS RETAINED OR REDUNDANT TO SUPPLY THE NEW OUTLETS IF THEY HAVE SUFFICIENT CAPACITY AND COMPLY WITH THE CURRENT VERSION OF AS3000.

ALL OF THE EXISTING CIRCUITS, CABLING AND OUTLETS THAT BECOME REDUNDANT ARE TO BE REMOVED.

ANY INTERRUPTION TO THE POWER SUPPLY TO ANY SERVICES OUTSIDE OF THE AREA OF WORKS MUST BE RESTRICTED TO OUTSIDE OF THE VENUES OPERATING HOURS AND MUST BE ADVISED TO THE OPERATOR IN WRITING TWO WEEKS PRIOR.

THE POWER DISTRIBUTION COMPONENT OF THIS CONTRACT INCLUDES, BUT IS NOT LIMITED TO THE FOLLOWING EXTENT OF WORK:

- POWER DISTRIBUTION.
- DISTRIBUTION BOARD MODIFICATIONS AND UPGRADES.
- CABLE ACCESS WAYS.
- CIRCUITS.
- ISOLATORS AND OUTLETS.
- FLOOR BOXES.
- TESTING AND COMMISSIONING.
- REMOVAL OF ALL EXISTING REDUNDANT SERVICES.
- RECONNECTION OF ALL EXISTING SERVICES THAT REMAIN.

7. LIGHTING

ALL OF THE LIGHT FITTINGS, LAMPS AND ACCESSORIES ARE TO BE PROVIDED AS PART OF THIS CONTRACT. THE EXISTING FITTINGS ARE TO BE REPLACED WITH 50,000 HOUR SOLID STATE LED FITTINGS. THE LIGHTING COMPONENT OF THIS CONTRACT INCLUDES, BUT IS NOT LIMITED TO THE FOLLOWING EXTENT OF WORK:

- LIGHTING.
- LIGHT FITTINGS AND ACCESSORIES.
- EMERGENCY AND EXIT LIGHTING.
- EARTHING OF THE LIGHTING INSTALLATION.
- LIGHTING CONTROL.
- LIGHTING SUBCIRCUITS.
- TESTING AND COMMISSIONING.
- RECONNECTION OF THE EXISTING LIGHTING THAT REMAINS.
- REMOVAL OF ALL EXISTING REDUNDANT LIGHTING SERVICES.

8. COMMUNICATIONS CABLING

THE COMMUNICATIONS CABLING COMPONENT OF THIS CONTRACT INCLUDES REPLACING THE EXISTING 110 CABLING SYSTEM WITH A NEW RACK AND ALL NECESSARY PATCH PANELS.

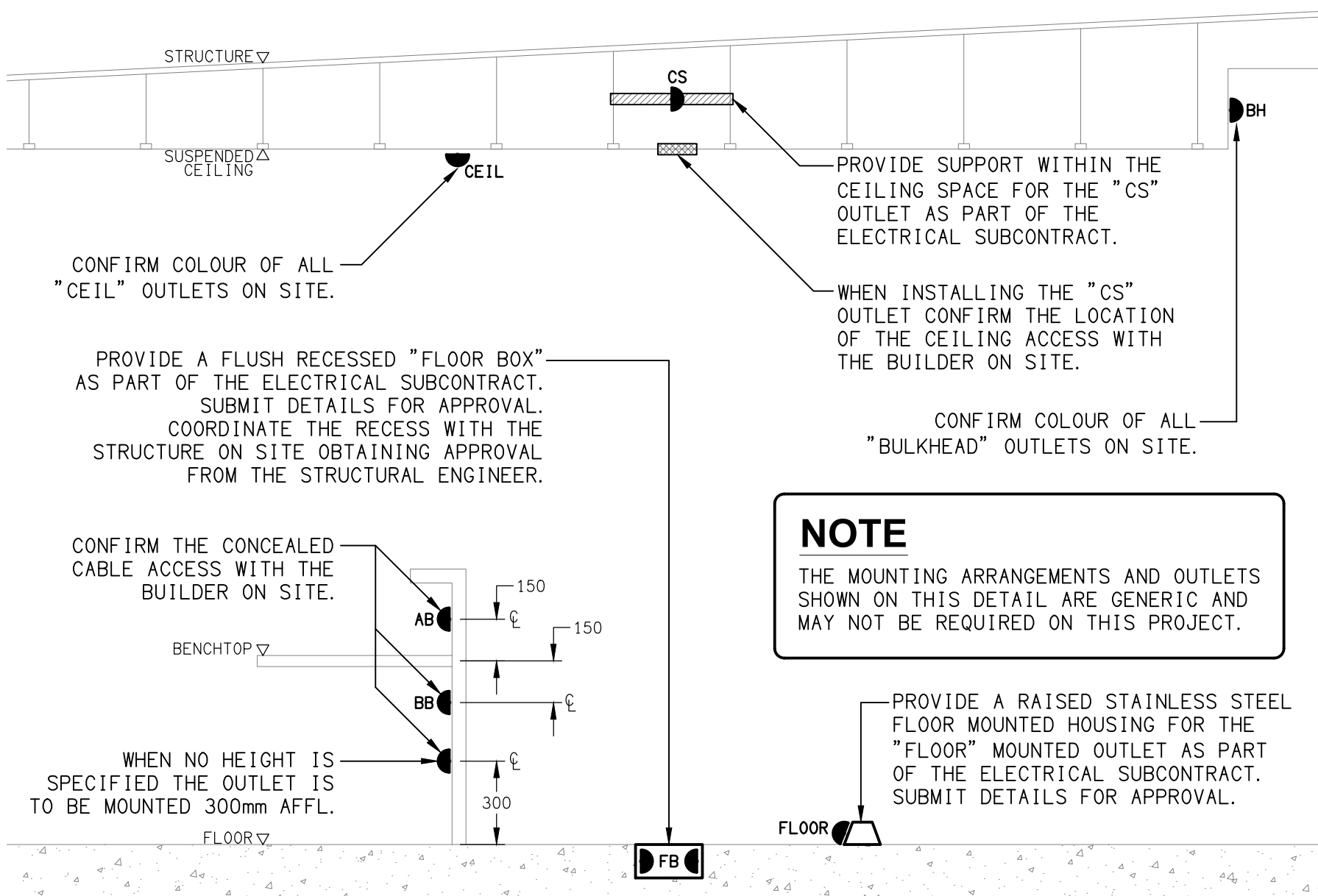
ANY INTERRUPTION TO THE VENUES COMMUNICATIONS SERVICES OUTSIDE OF THE AREA OF WORKS MUST BE RESTRICTED TO OUTSIDE OF THE VENUES OPERATING HOURS AND MUST BE ADVISED TO THE OPERATOR IN WRITING TWO WEEKS PRIOR.

THE COMMUNICATIONS CABLING COMPONENT OF THIS CONTRACT INCLUDES, BUT IS NOT LIMITED TO THE FOLLOWING EXTENT OF WORK:

- COMMUNICATIONS RACK CR-A.
- PATCH PANELS IN CR-A AS NECESSARY.
- CAT 6 COMMUNICATIONS OUTLETS AND CABLING.
- CABLE ACCESS WAYS.
- TESTING AND COMMISSIONING.
- REMOVAL OF ALL EXISTING COMMUNICATIONS CABLING MADE REDUNDANT BY THE WORKS.

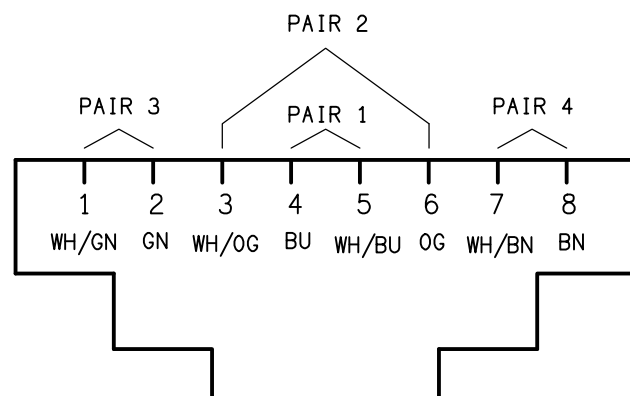
9. ABBREVIATIONS

A	-	AMP CURRENT RATING
AB	-	MOUNT ABOVE BENCH.
AD	-	AUTO DOOR.
AFFL	-	ABOVE FINISHED FLOOR LEVEL.
BB	-	MOUNT BELOW BENCH.
BH	-	MOUNT ON BULKHEAD.
CEIL	-	MOUNT ON CEILING.
CS	-	MOUNT WITHIN CEILING SPACE.
C/W	-	COMPLETE WITH.
EXIST	-	EXISTING OUTLET.
HWS	-	HOT WATER SYSTEM.
MCB	-	MINIATURE CIRCUIT BREAKER.
N	-	NEON / LED INDICATOR WHEN ON.
NTS	-	NOT TO SCALE.
RCBO	-	CIRCUIT BREAKER C/W AN INTEGRAL 30mA RESIDUAL CURRENT DEVICE.
RCD	-	CIRCUIT PROTECTED VIA A 30mA RESIDUAL CURRENT DEVICE.
REF	-	REFRIGERATOR.
RK	-	RECESS KIT.
UNO	-	UNLESS NOTED OTHERWISE.
WP	-	WEATHERPROOF TO IP56 UNO.
500	-	NUMBER DENOTES MOUNTING HEIGHT AFFL.



DETAIL

TYPICAL OUTLET MOUNTINGS
NOT TO SCALE



SCHEMATIC

RJ45 PINOUT CONFIGURATION
NOT TO SCALE

<div>ELECTRICAL DESIGN GROUP BRISBANE PTY LTD ACN 092 710 793</div> <div>TRADING AS: ELECTRICAL DESIGN GROUP</div>	<div>THE COPYRIGHT OF THIS DRAWING REMAINS THE PROPERTY OF THE ELECTRICAL DESIGN GROUP.</div>	<div><div><div></div></div><div>ELECTRICAL DESIGN GROUP</div><div>ELECTRICAL BUILDING SERVICES CONSULTANTS</div><div>BRISBANE GOLD COAST</div><div>P.O.Box 15, Sherwood Q.4075 Phone: (07) 3278 4375 Email: brisbane@edg.net.au Web: www.edg.net.au</div></div>	<div>PROJECT: EAGERS MT GRAVATT - MITSUBISHI & KIA</div> <div>1332 LOGAN ROAD, MT GRAVATT</div>	<div>DRAWING: ELECTRICAL SERVICES LEGEND, SCHEMATICS & DETAILS</div>		
	<div>USE FIGURED DIMENSIONS IN PREFERENCE TO SCALE.</div>					
	<div>ALL DIMENSIONS TO BE VERIFIED ONSITE.</div>		<div>SCALE: NOT TO SCALE AT A1</div>			
			<div><div>PROJECT NO: C3284a</div><div>DRAWING NO: E01</div><div>REVISION: E</div></div>			

MSB NOTES

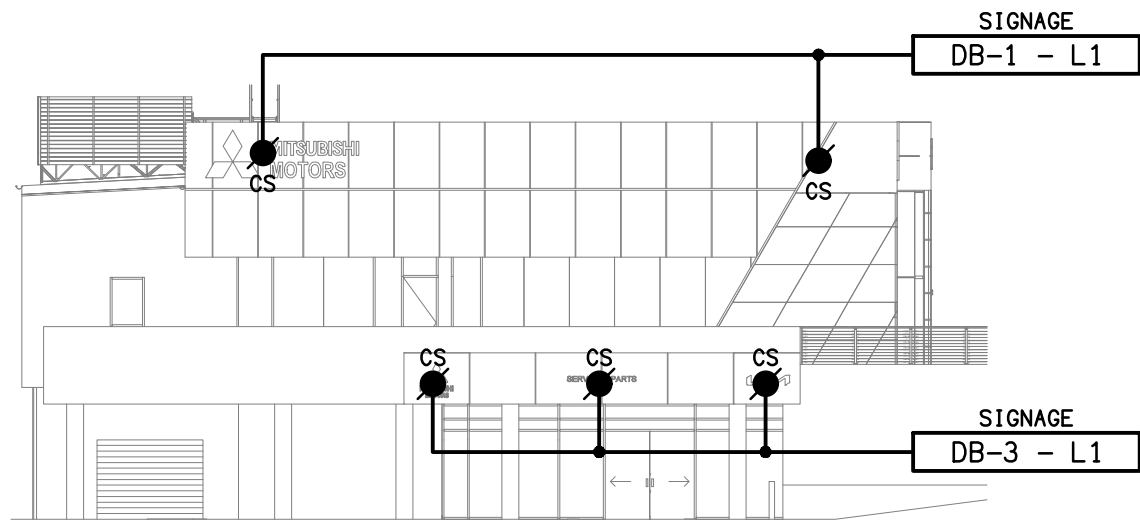
UPGRADE THE EXISTING CARPARK SITE ENERGEX POWER SUPPLY TO 80 AMP THREE PHASE WITH A NEW STEEL PROPERTY POLE AND POLE MOUNTED MAIN SWITCHBOARD. ARRANGE FOR THE NEW SUPPLY WITH ENERGEX AND RETAIL METERS TO BE PROVIDED.

RECONNECT THE EXISTING CIRCUITS TO THE NEW MSB WITH NEW SWITCHGEAR AND CONTROLS THAT REFLECT THE EXISTING IN CAPACITY AND FUNCTION. PROVIDE A NEW 3 PHASE 80 AMP SUPPLY TO THE NEW KIA EV CHARGER.

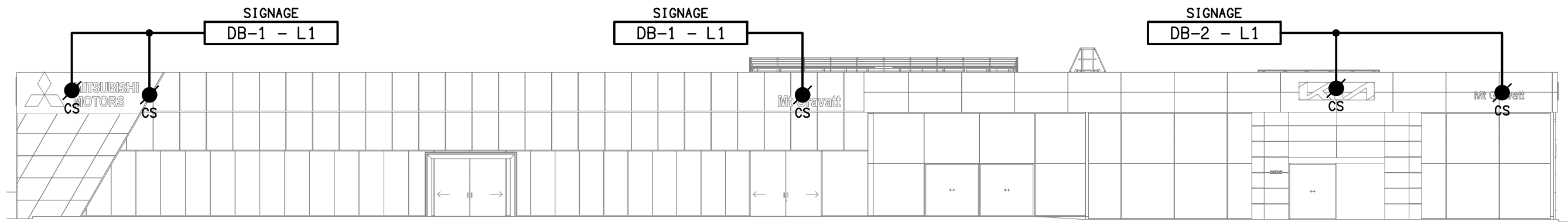
THE EXISTING SERVICES MADE REDUNDANT BY THE NEW PROPERTY POLE AND MAIN SWITCHBOARD ARE TO BE REMOVED.

PROVIDE THE SITE MAIN SWITCHBOARD (MSB) AS FOLLOWS:

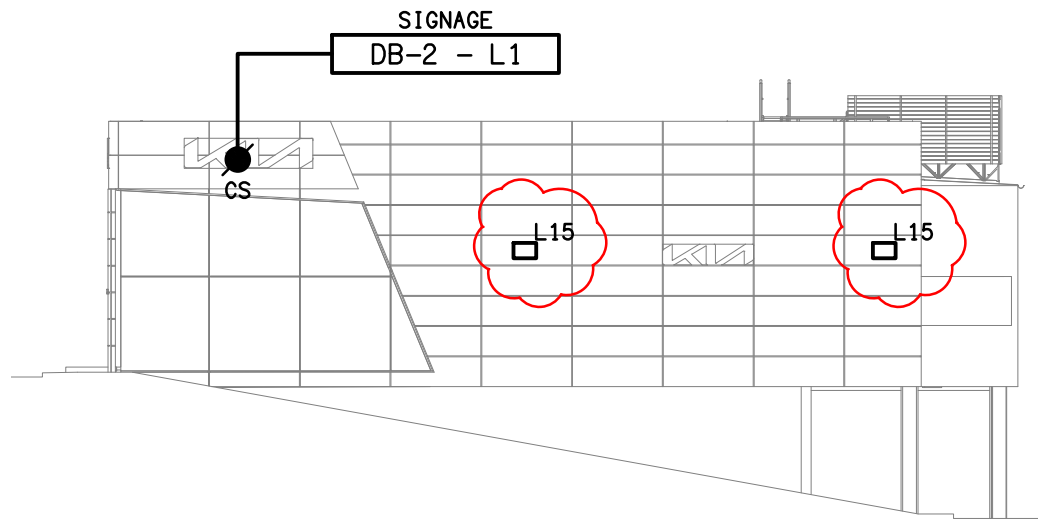
- POLE MOUNTED.
- NATIONAL ELECTRICITY MARKET (NEM) COMPLIANT RETAIL METERING.
- POWDER COATED LIGHT GREY ENCLOSURE AND DOORS.
- LOCKABLE DOOR.
- GLOSS WHITE ESCUTCHEONS.
- ALL COMPONENTS ARE TO BE LABELLED WITH NON-STICK LABELS.



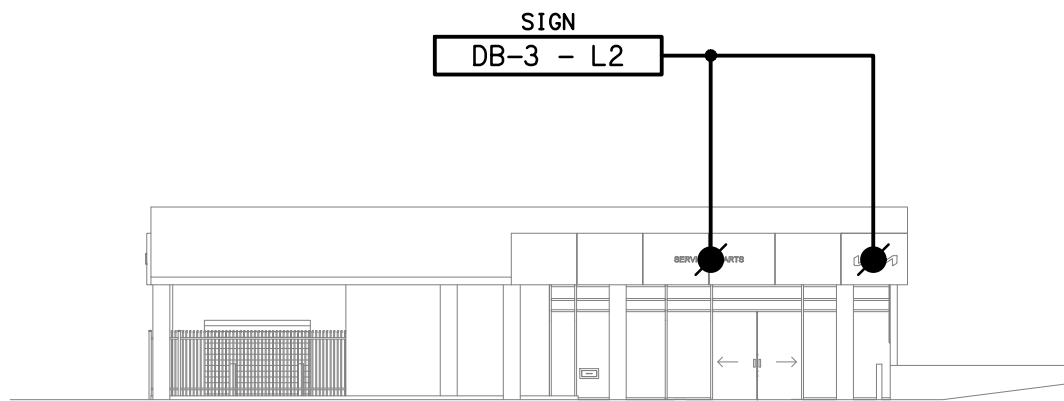
DETAIL A
NORTH WEST EXTERNAL BUILDING ELEVATION
SCALE 1:200



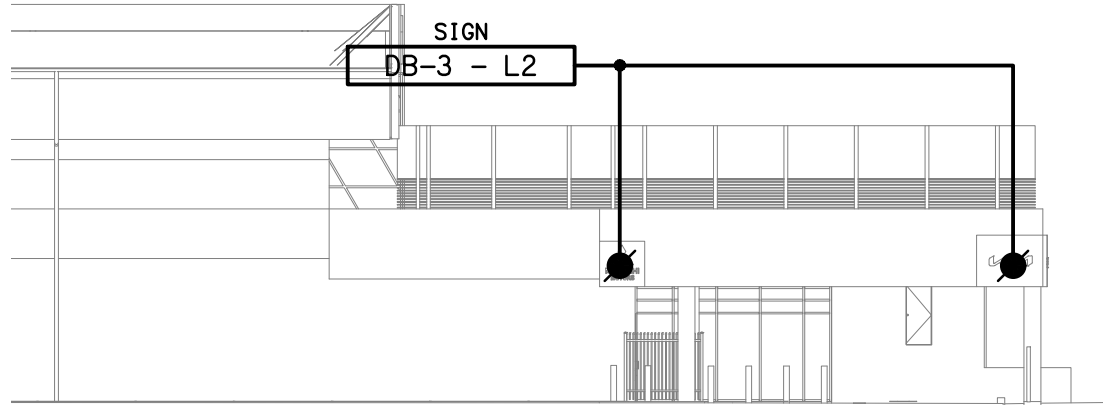
DETAIL B
SOUTH WEST EXTERNAL BUILDING ELEVATION
SCALE 1:200



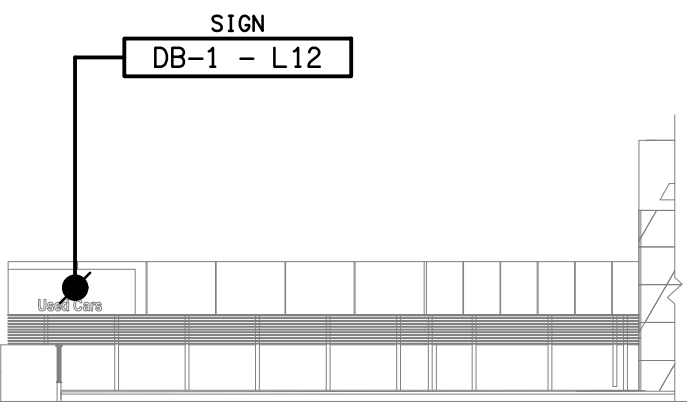
DETAIL C
SOUTH EAST EXTERNAL BUILDING ELEVATION
SCALE 1:200



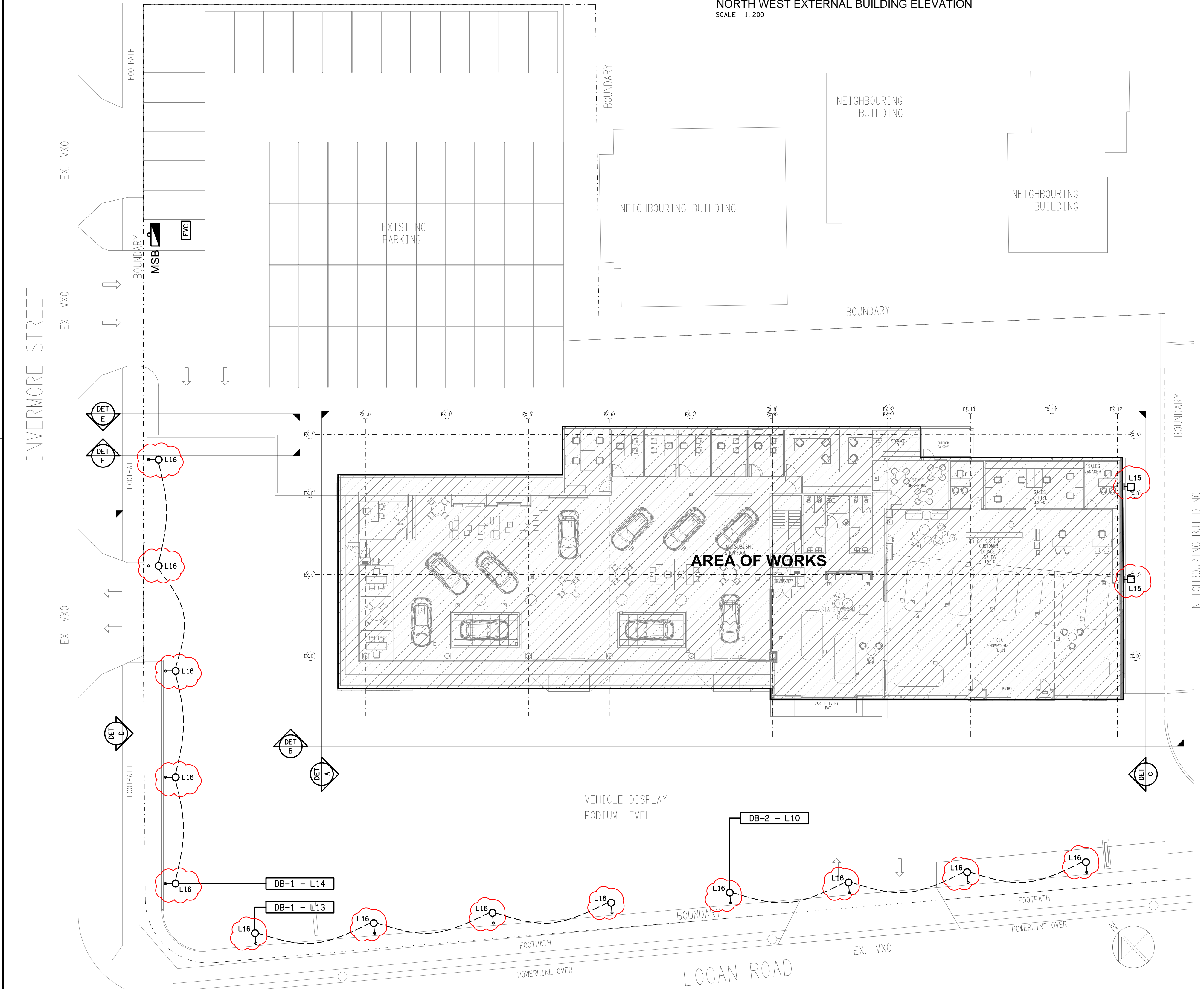
DETAIL D
EXTERNAL BUILDING ELEVATION
SCALE 1:200



DETAIL E
EXTERNAL BUILDING ELEVATION
SCALE 1:200



DETAIL F
EXTERNAL BUILDING ELEVATION
SCALE 1:200



ELECTRICAL DESIGN GROUP BRISBANE
PTY LTD
ACN 092 710 793
TRADING AS:
ELECTRICAL DESIGN GROUP

THE COPYRIGHT OF THIS DRAWING
REMAINS THE PROPERTY OF THE
ELECTRICAL DESIGN GROUP.
USE FIGURED DIMENSIONS
IN PREFERENCE TO SCALE.
ALL DIMENSIONS TO BE
VERIFIED ONSITE.

ELECTRICAL DESIGN GROUP
ELECTRICAL BUILDING SERVICES CONSULTANTS
BRISBANE GOLD COAST

P.O.Box 15, Sherwood Q.4075
Phone: (07) 3278 4375
Email: brisbane@edg.net.au
Web: www.edg.net.au

PROJECT:
EAGERS MT GRAVATT - MITSUBISHI & KIA

1332 LOGAN ROAD, MT GRAVATT

D	TENDER	18/11/2024
REV.	DESCRIPTION:	DATE:

DRAWING:
**ELECTRICAL SERVICES
SITE PLAN**

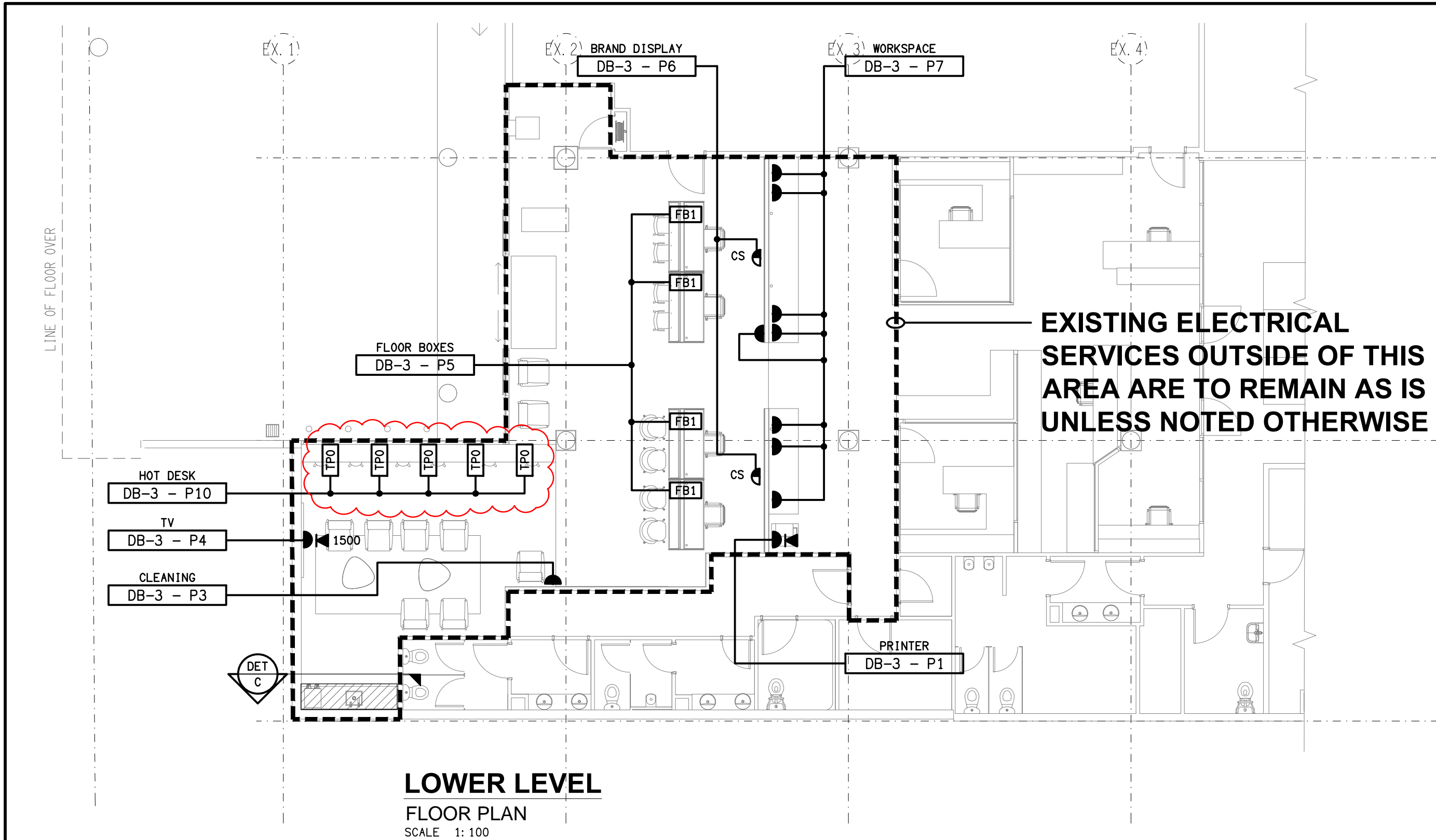
SCALE:
1:200

AT A1

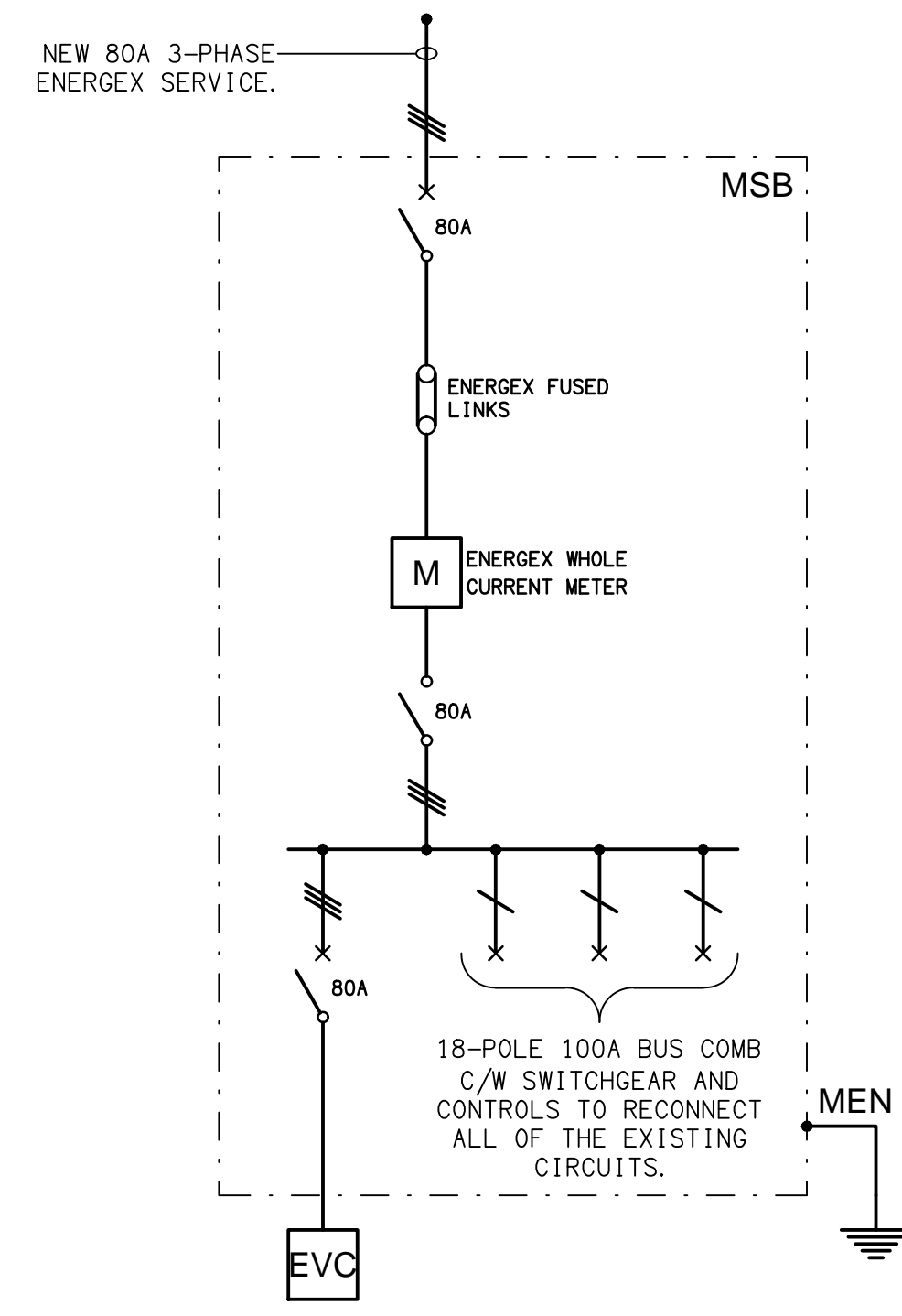
PROJECT NO:
C3284a

DRAWING NO:
E02

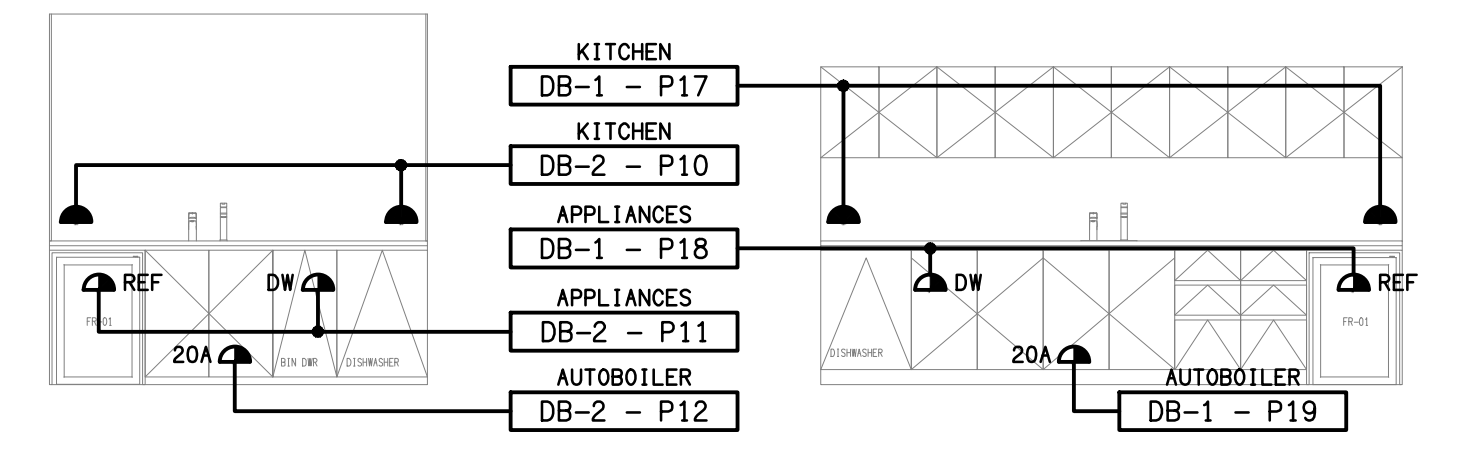
REVISION:
D



LOWER LEVEL
FLOOR PLAN
SCALE 1: 100

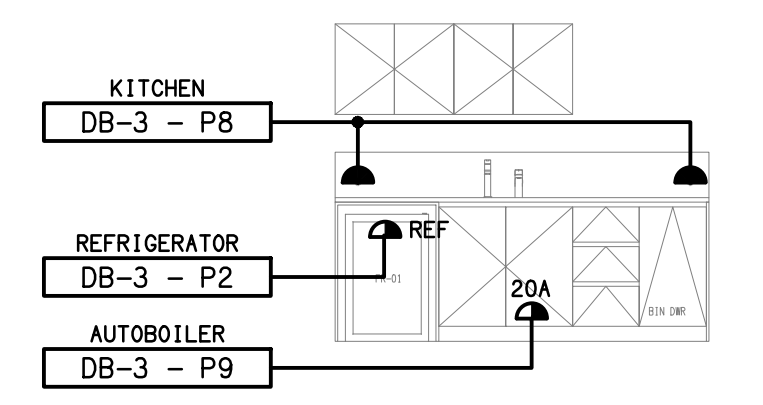


SCHEMATIC
MSB POWER ARRANGEMENTS
NOT TO SCALE

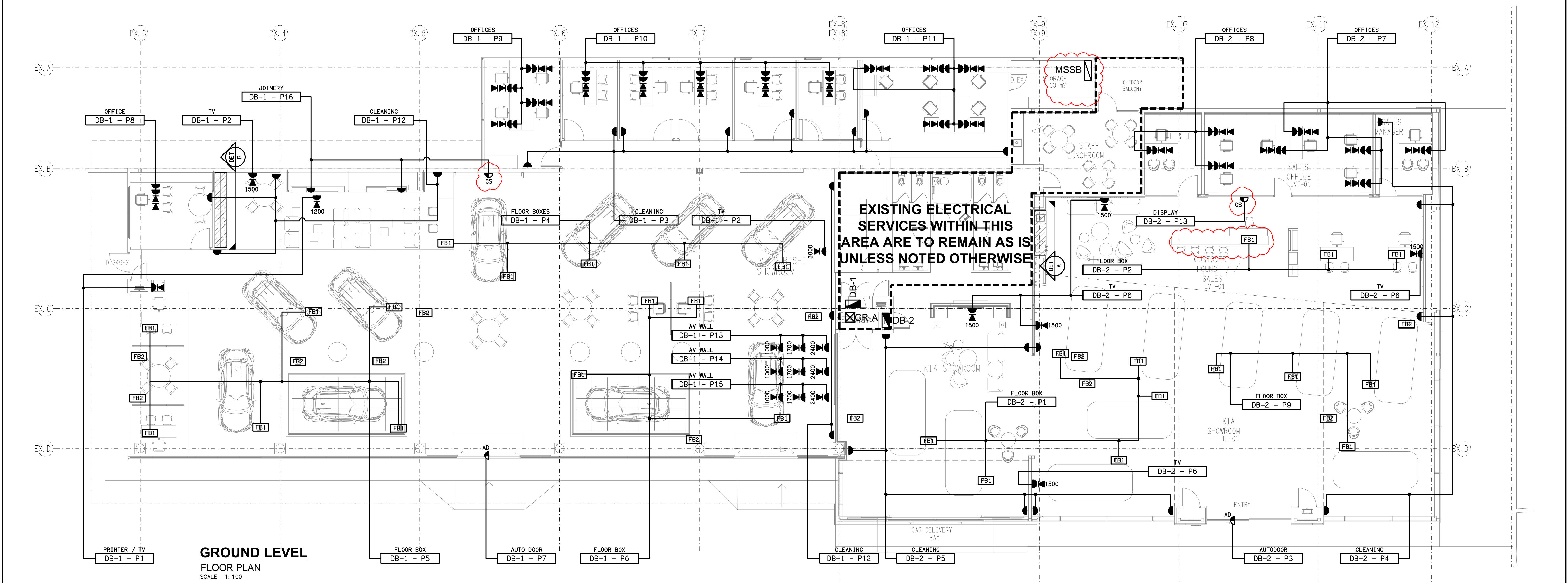


DETAIL A
KIA KITCHENETTE
SCALE 1: 50

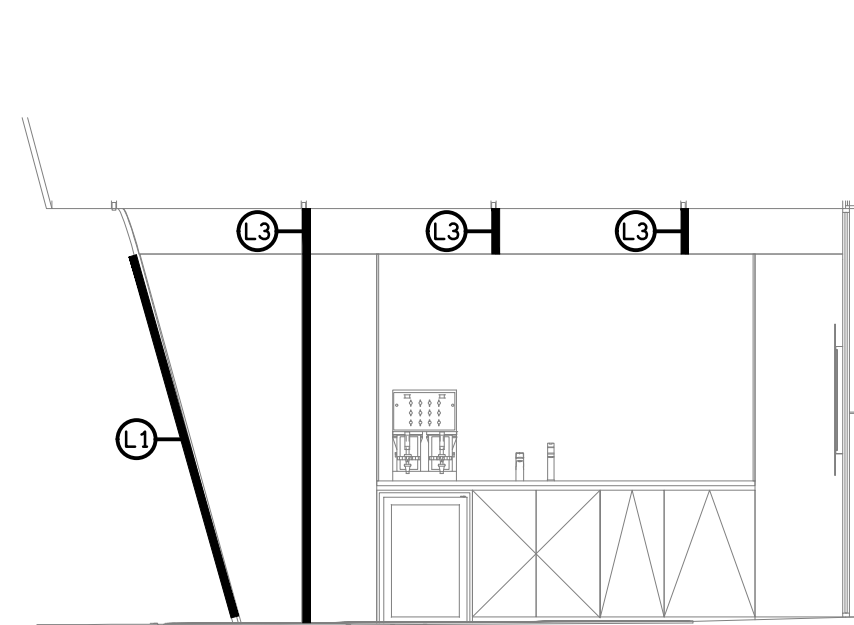
DETAIL B
MITSUBISHI KITCHENETTE
SCALE 1: 50



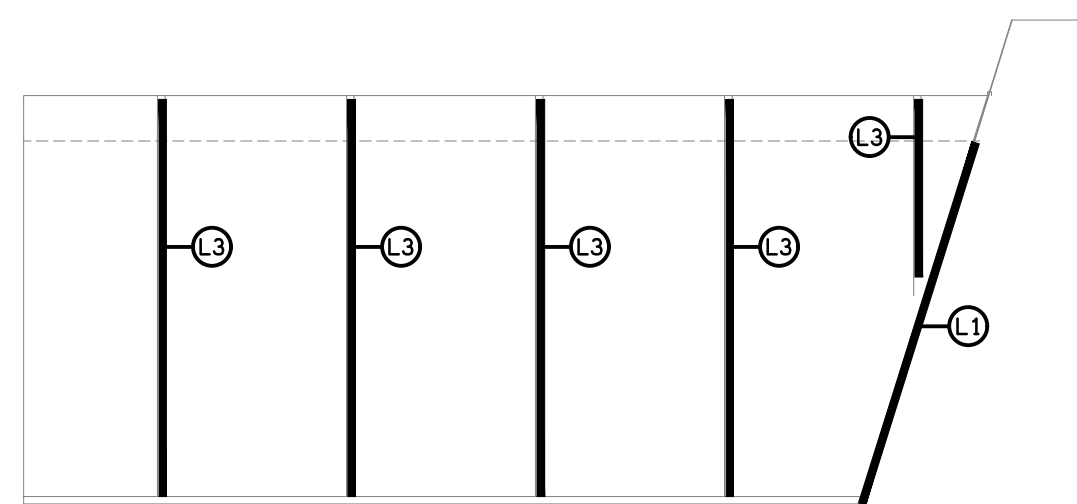
DETAIL C
SERVICE KITCHENETTE
SCALE 1: 50



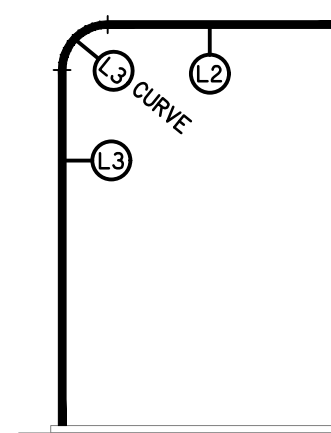
GROUND LEVEL
FLOOR PLAN
SCALE 1: 100



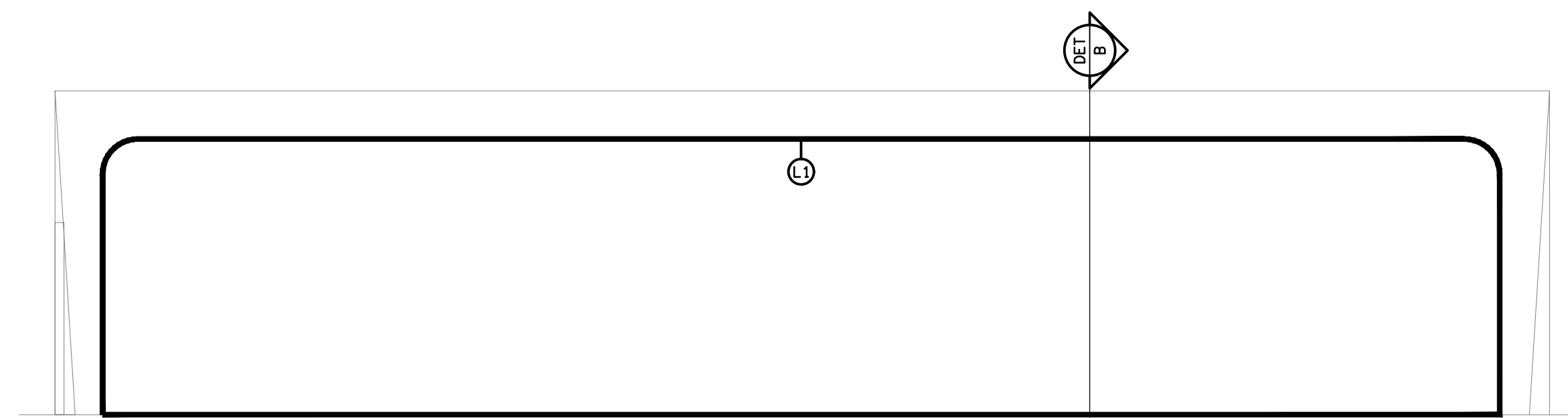
DETAIL C
L3 LIGHTING ELEVATION
SCALE 1: 50



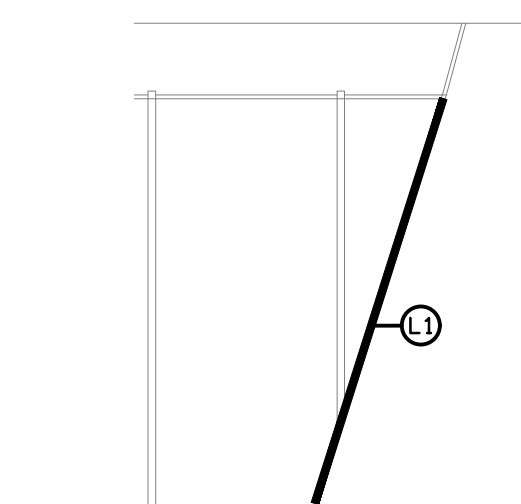
DETAIL D
L3 LIGHTING ELEVATION
SCALE 1: 50



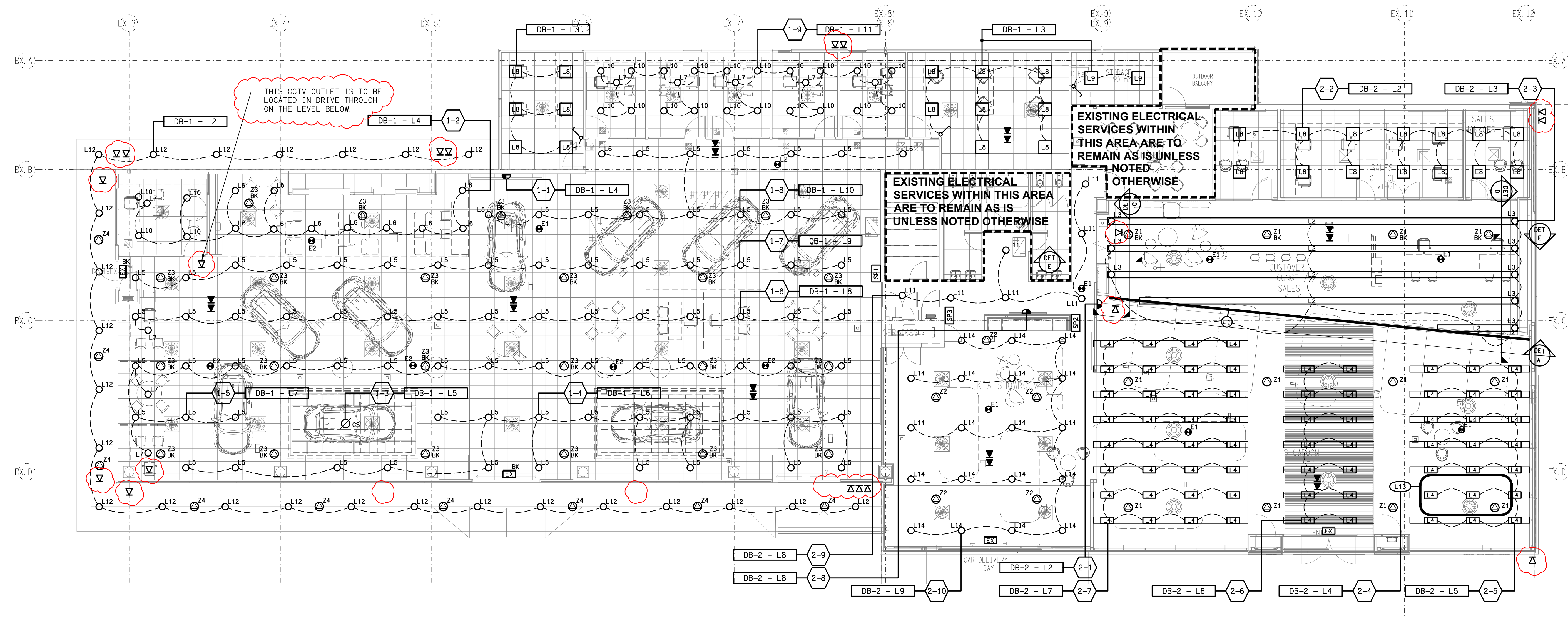
DETAIL E
L3 / L2 LIGHTING SECTION
SCALE 1: 50



DETAIL A
L1 LIGHTING ELEVATION
SCALE 1: 50



DETAIL B
L1 LIGHTING SECTION
SCALE 1: 50



ELECTRICAL DESIGN GROUP BRISBANE
PTY LTD
ACN 092 710 793
TRADING AS:
ELECTRICAL DESIGN GROUP

THE COPYRIGHT OF THIS DRAWING
REMAINS THE PROPERTY OF THE
ELECTRICAL DESIGN GROUP.
USE FIGURED DIMENSIONS
IN PREFERENCE TO SCALE.
ALL DIMENSIONS TO BE
VERIFIED ONSITE.

ELECTRICAL DESIGN GROUP
ELECTRICAL BUILDING SERVICES CONSULTANTS
BRISBANE GOLD COAST

P.O. Box 15, Sherwood Q.4075
Phone: (07) 3278 4375
Email: brisbane@edg.net.au
Web: www.edg.net.au

PROJECT:
EAGERS MT GRAVATT - MITSUBISHI & KIA

1332 LOGAN ROAD, MT GRAVATT

D	TENDER	20/11/2024
REV.	DESCRIPTION:	DATE:

DRAWING:
**ELECTRICAL SERVICES
REFLECTED CEILING PLANS**

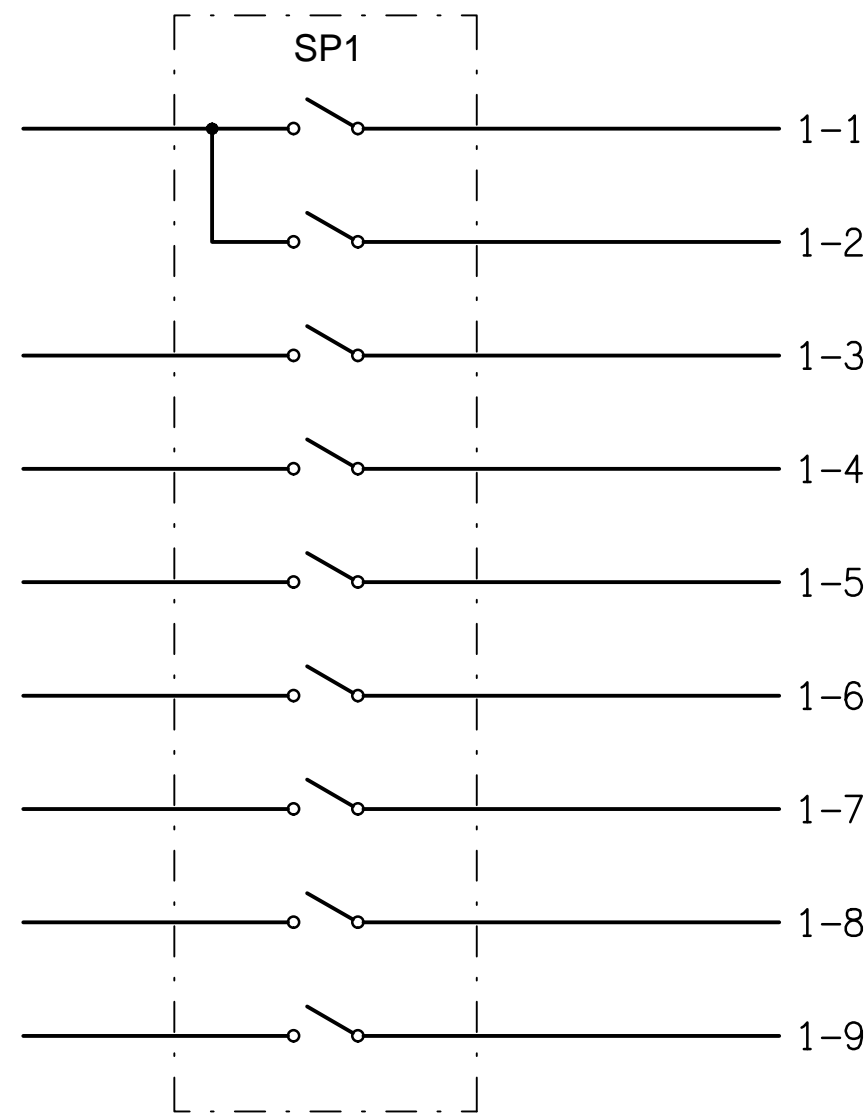
SCALE:
1:100

AT A1

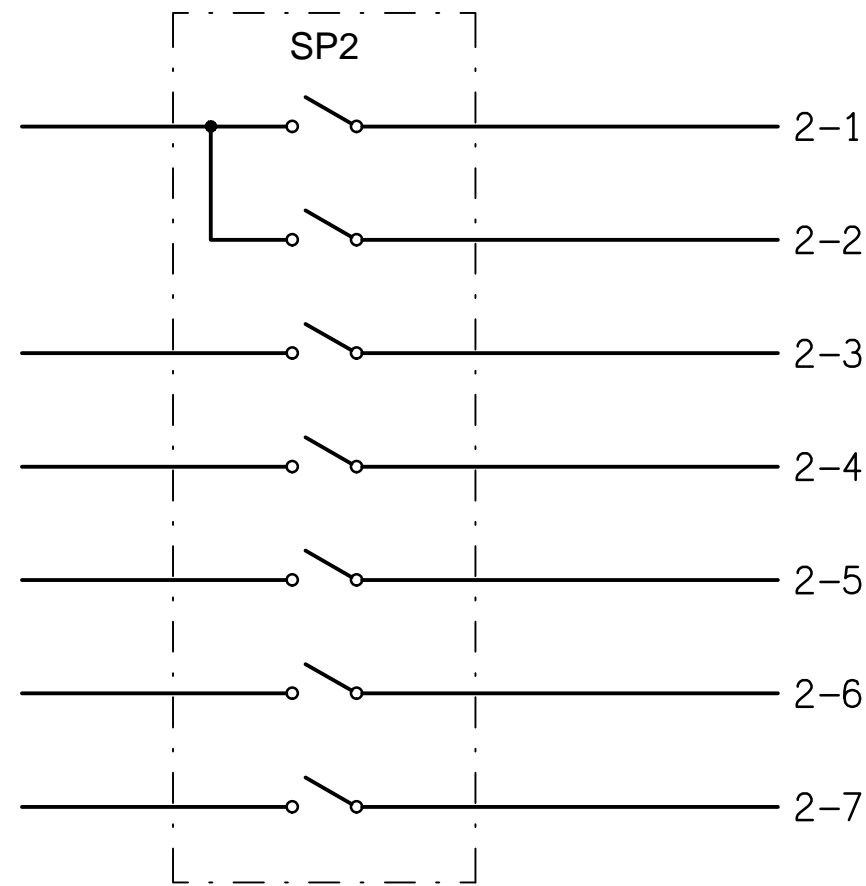
PROJECT NO:
C3284a

DRAWING NO:
E04

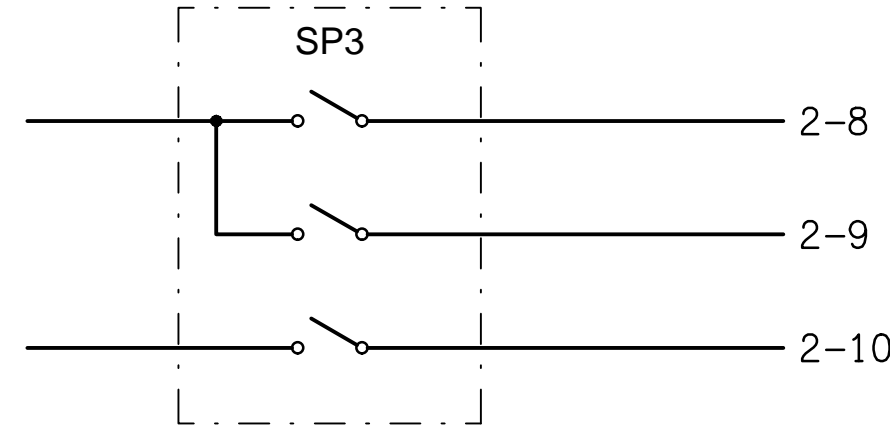
REVISION:
D



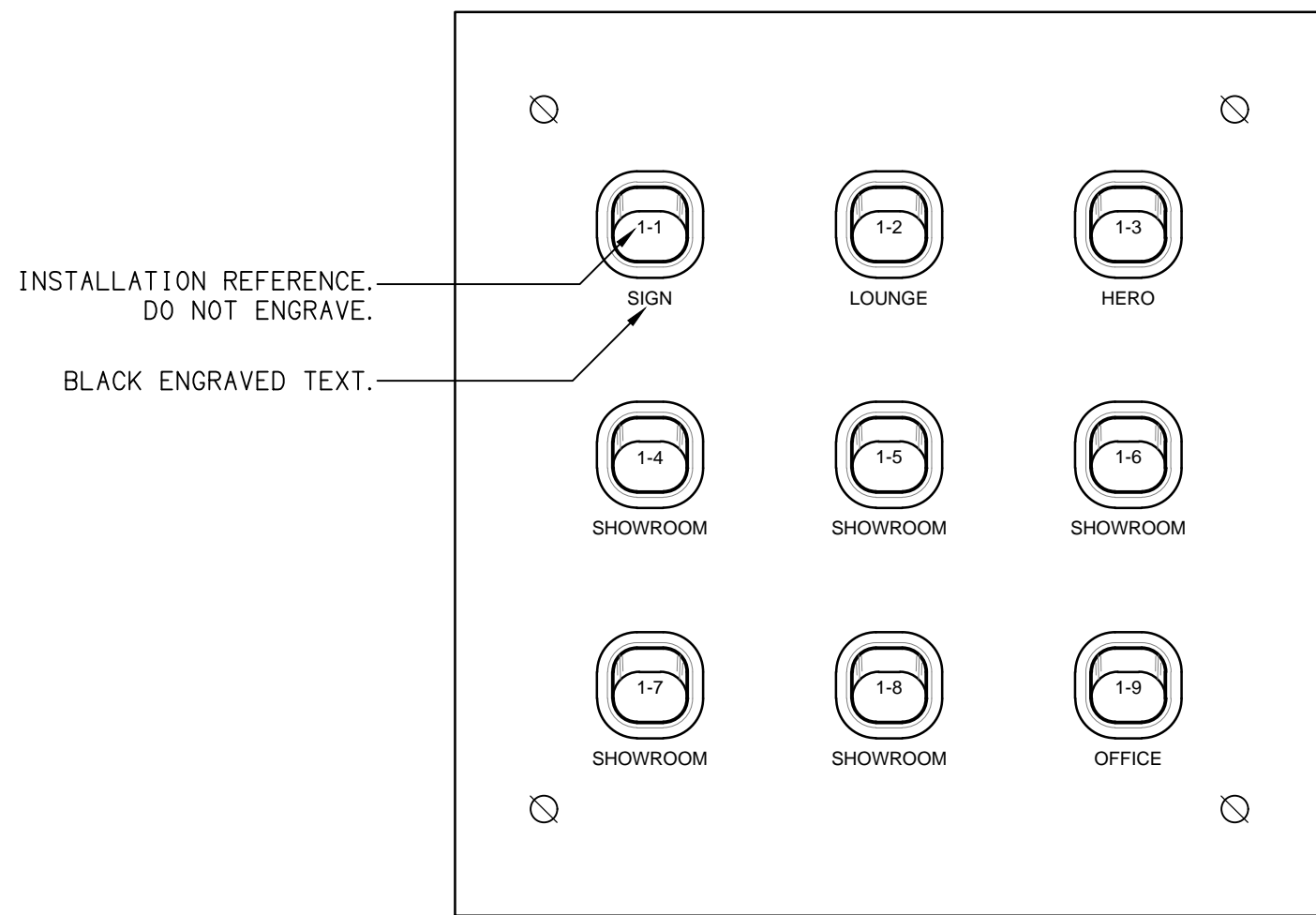
SCHEMATIC
SP1 LIGHTING CONTROL
NOT TO SCALE



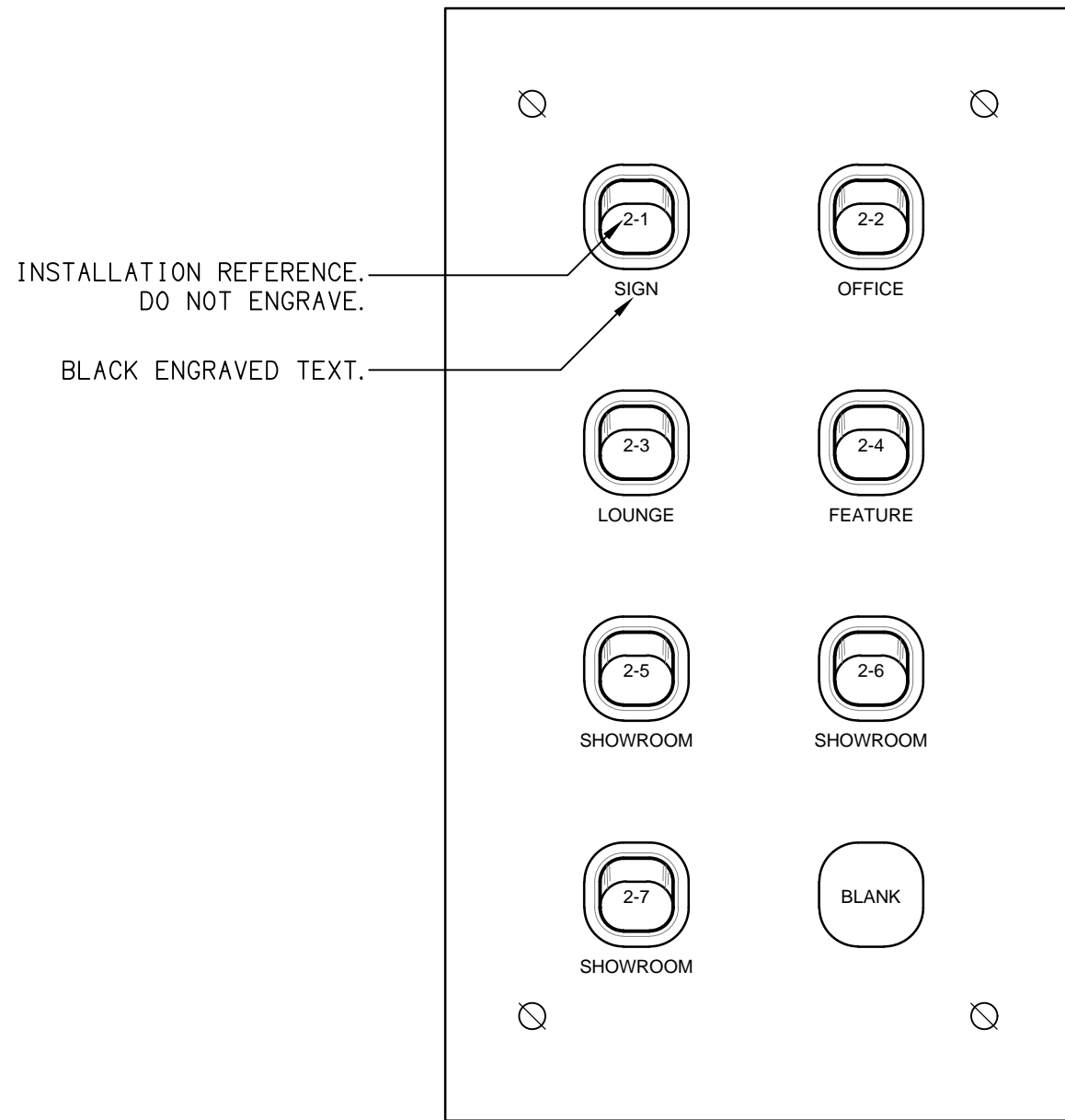
SCHEMATIC
SP2 LIGHTING CONTROL
NOT TO SCALE



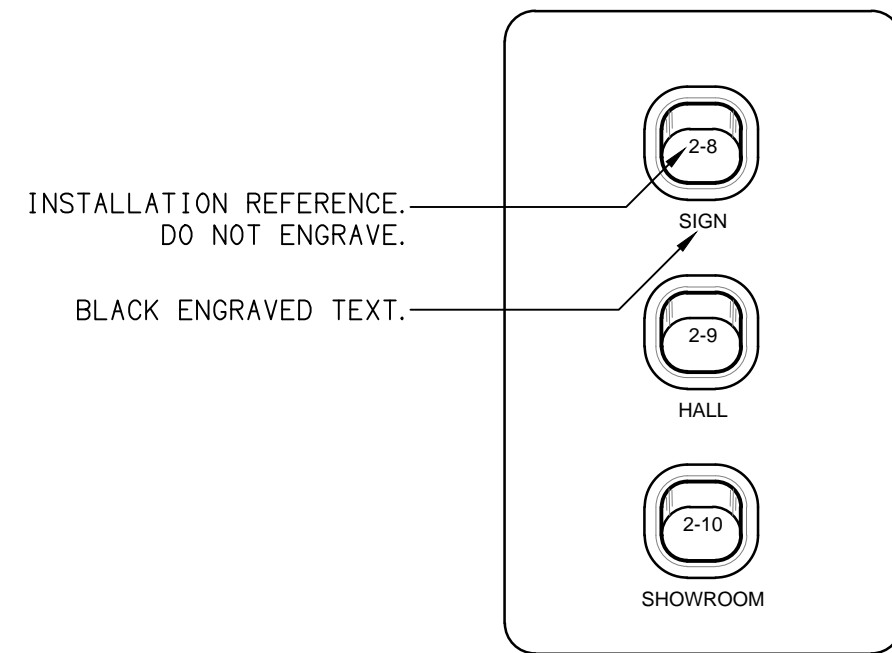
SCHEMATIC
SP3 LIGHTING CONTROL
NOT TO SCALE



DETAIL
SP1 SWITCHPANEL ELEVATION
NOT TO SCALE



DETAIL
SP2 SWITCHPANEL ELEVATION
NOT TO SCALE



DETAIL
SP3 SWITCHPANEL ELEVATION
NOT TO SCALE