

LEGEND

	ELECTRICAL SERVICES SWITCHBOARD.
	SWITCHBOARD BY OTHERS.
	SINGLE POWER OUTLET.
	DOUBLE POWER OUTLET.
	SPECIAL PURPOSE POWER OUTLET.
	SINGLE PHASE ISOLATOR.
	THREE PHASE ISOLATOR.
DUCT x	ELECTRICAL SERVICES DUCT, TYPE AS NOTED.
	CONDUIT ROUTE.
	x DENOTES CONDUIT TYPE.
	ELECTRICAL CABLE TRAY, TYPE AS NOTED.
PIT x	ELECTRICAL PIT, TYPE AS NOTED.
	ELECTRICAL FLOOR BOX, TYPE AS NOTED.
	HAND DRYER CONNECTION.
	LIGHTING CONTROL SENSORS NO LONGER REQUIRED.
	LIGHTING PRESENCE DETECTOR SWITCH.
	LIGHTING CONTROL SWITCH PANEL, TYPE AS NOTED.
	ONE-WAY LIGHT SWITCH.
	TWO-WAY LIGHT SWITCH.
	CIRCUIT LINE.
	SWITCH LINE.
	POWER CIRCUIT DESIGNATION. DENOTES DB AND CIRCUIT.
CTE	CABLE TERMINATION ENCLOSURE.
LPP	NO LONGER REQUIRED.
SOP	STAGE OUTLET PANEL.
	ELECTRICAL EQUIPMENT AS NOTED.
	RJ45 COMMUNICATIONS OUTLET.
	CAT-6 LINK CABLE OUTLET.
	MATV OUTLET.
	ACCESS CONTROL AUTO DOOR INTERFACE.
	ACCESS CONTROL CARD READER.
	ACCESS CONTROL DOOR ELECTRIC STRIKE.
	ACCESS CONTROL MAGNETIC DOOR HOLDER.
	ACCESS CONTROL ROLLER SHUTTER DOOR INTERFACE.
	SECURITY KEY PANEL.
	SECURITY DIRECTIONAL MOTION DETECTOR.
	SECURITY 360 DEGREE MOTION DETECTOR.
	SECURITY PIEZO SIREN.

LEGEND

	PA HORN / HOOTER.
	PA RECESSED SPEAKER.
	PA SURFACE MOUNTED SPEAKER.
	THERMAL DETECTOR.
	SMOKE ALARM.
	SUPPLY AUTHORITY METER.
	EXISTING PRIVATE MULTI-FUNCTION METER.
	FUSE.
	SINGLE PHASE.
	THREE PHASE.
	CURRENT TRANSFORMER C/W REMOVABLE LINK.
	CIRCUIT BREAKER.
	ISOLATOR.
	RESIDUAL CURRENT DEVICE.
	CONTACTOR – NORMALLY OPEN.
	CONTACTOR – NORMALLY CLOSED.
	E1: GENERAL LED EMERGENCY LIGHT, WHITE.
	E2: GENERAL LED EMERGENCY LIGHT, WHITE.
	EX: EMERGENCY LED EXIT LIGHT.
	EX TM: EMERGENCY LED EXIT LIGHT C/W BLACK THEATRE MASK.
	LB: NO LONGER REQUIRED.
	Lx: LIGHT FITTING C/W NON-MAINTAINED EMERGENCY BATTERY PACK. TYPE AS NOTED.
	L1: 600 x 300 SURFACE MOUNTED LED FLAT PANEL.
	L2: 1200 x 300 SURFACE MOUNTED LED FLAT PANEL.
	L3: 600 x 600 T-BAR LAY IN LED FLAT PANEL.
	L4: 1200 LONG LED SURFACE MOUNTED BATTEN.
	L5: NO LONGER REQUIRED.
	L6: LED RECESSED DOWNLIGHT.
	L7: LED RECESSED DOWNLIGHT.
	L8: LED RECESSED DOWNLIGHT.
	L9: LED SUSPENDED PENDANT.
	L10: LED RECESSED ADJUSTABLE DOWNLIGHT.
	L11: LED RECESSED DOWNLIGHT.
	L12: LED RECESSED ADJUSTABLE DOWNLIGHT.
	L13: LED RECESSED ADJUSTABLE DOWNLIGHT.
	L14: LED RECESSED ADJUSTABLE DOWNLIGHT.
	L15: LED RECESSED DOWNLIGHT.
	L16: NO LONGER REQUIRED.
	L17: LED RECESSED DOWNLIGHT.
	L18: LED RECESSED DOWNLIGHT.

LEGEND

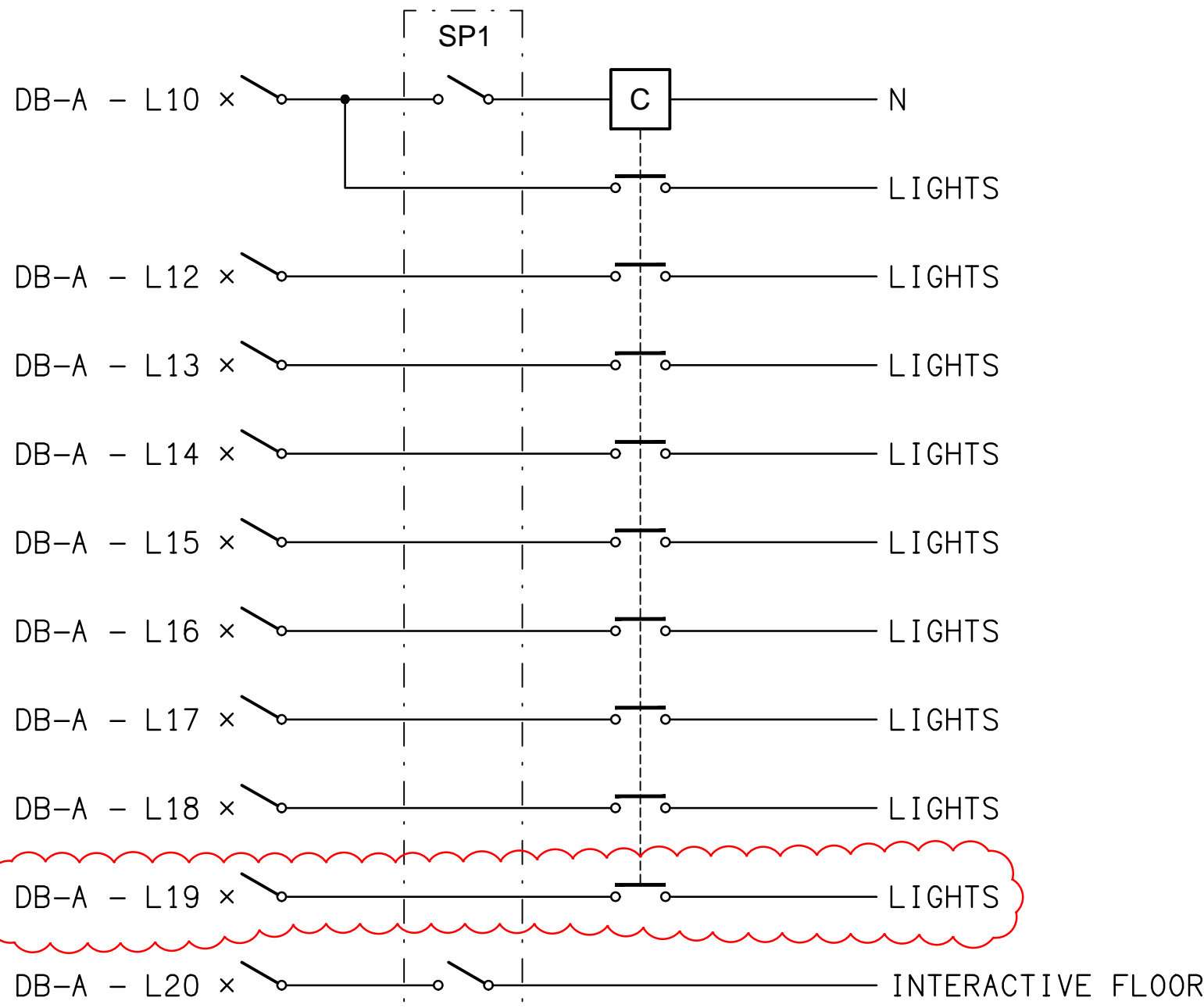
	L19: LED RECESSED DOWNLIGHT.
	L20: NO LONGER REQUIRED.
	L21: NO LONGER REQUIRED.
	L22: LED SUSPENDED POD PENDANT.
	L23: LED SURFACE EXTRUSION.
	L24: LED SURFACE MOUNTED ALUMINIUM EXTRUSION.
	L25: NO LONGER REQUIRED.
	L26: LED SUSPENDED LOUNGE PENDANT.
	L27: NO LONGER REQUIRED.
	L28: NO LONGER REQUIRED.
	L29: LED STRIP LIGHT MOUNTED UNDER THE OVERHEAD CUPBOARD.
	L30: LED BOLLARD LIGHT.
	L31: 4m HIGH POLE WITH LED FITTING.
	L32: 4m HIGH POLE WITH LED FITTING.
	L33: NO LONGER REQUIRED.
	L34: LED WALKWAY WALL MOUNTED LED DOWNLIGHT.
	L35: LED WALL MOUNTED FACADE UPLIGHT.
	L36: LED WALL MOUNTED DOWNLIGHT.
	L37: LED ADJUSTABLE SPOTLIGHT.
	L38: LED STRIP LIGHT MOUNTED WITHIN STRUCTURAL CHANNEL.
	L39: LED STRIP LIGHT MOUNTED TO UNDERSIDE OF LOWER AWNING.
	L40: 1200 LONG LED SURFACE MOUNTED BATTEN.
	L41: LED RECESSED ADJUSTABLE DOWNLIGHT.
	L42: LED SURFACE MOUNTED EXTRUSION.
	L43: LED RECESSED DOWNLIGHT.
	L44: LED SURFACE MOUNTED EXTRUSION.
	L45: LED ADJUSTABLE RECESSED DOWNLIGHT.
	L46: LED RECESSED DOWNLIGHT.
	L47: LED RECESSED DOWNLIGHT.
	L48: LED RECESSED DOWNLIGHT.
	L49: NO LONGER REQUIRED.
	L50: NO LONGER REQUIRED.
	L51: 600 x 600 PLASTERBOARD LED FLAT PANEL FITTING.
	L52: DALI DIMMABLE SUSPENDED PENDANT.
	L53: LED STRIP LIGHT.
	L54: LED STRIP LIGHT.
	L55: LED STRIP LIGHT.
	L56: DALI DIMMABLE DOWNLIGHT.
	L57: DALI DIMMABLE DOWNLIGHT.
	L58: 600 x 600 T-BAR DALI DIMMABLE LED FLAT PANEL FITTING.
	L59: LED STRIP LIGHT.

LEGEND

	SECURITY SYSTEM DOOR HOLD OPEN DEVICE.
	SECURITY SYSTEM DOOR STATUS SENSOR.
	DALI LIGHTING POT DIMMER / SWITCH.
	ONE-WAY LIGHT SWITCH C/W LED INDICATOR WHEN ON.
	MOBILE PHONE BOOSTER SYSTEM ANTENNA.
	ROLLER SHUTTER DOOR REED SWITCH.
	EXTERNAL HORN SPEAKER.

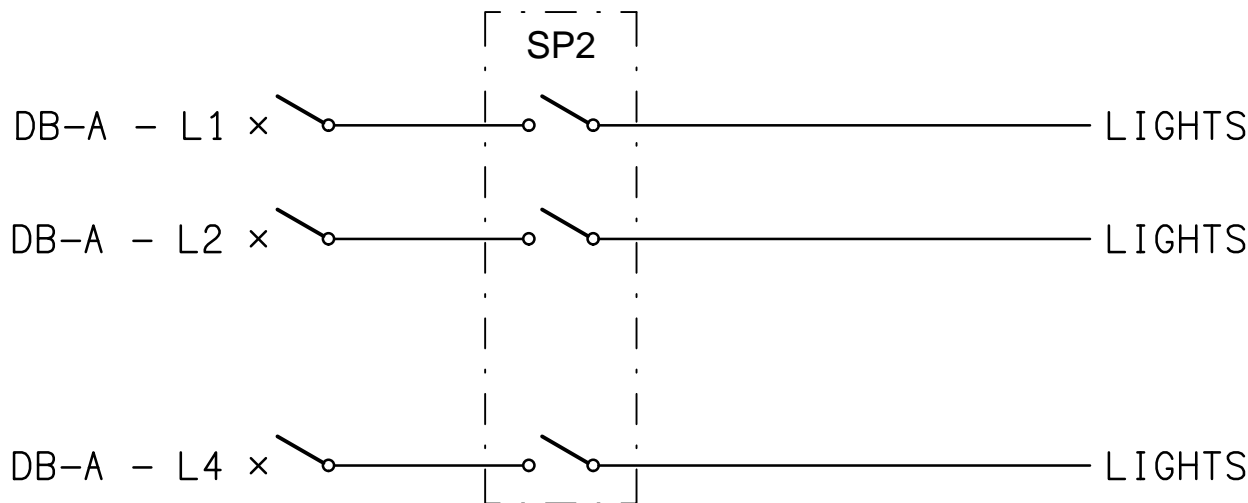
NOTE

ALL ELECTRICAL PENETRATIONS THROUGH THE ROOF SHEETING ARE TO BE IN LINE WITH THE STRUCTURAL OR MECHANICAL SERVICES PENETRATIONS TO AVOID DEDICATED FLASHINGS FOR THE ELECTRICAL SERVICES.



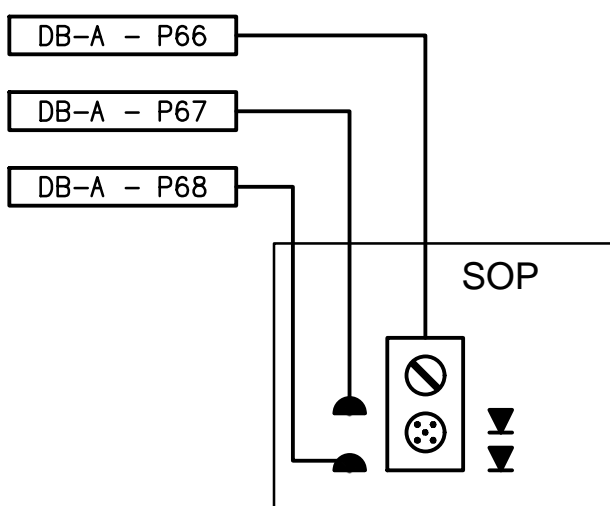
SCHEMATIC

SP1 SWITCHPANEL CONTROL
NOT TO SCALE



SCHEMATIC

SP2 SWITCHPANEL CONTROL
NOT TO SCALE



DETAIL

STAGE OUTLET PANEL (SOP) CONFIGURATION
NOT TO SCALE