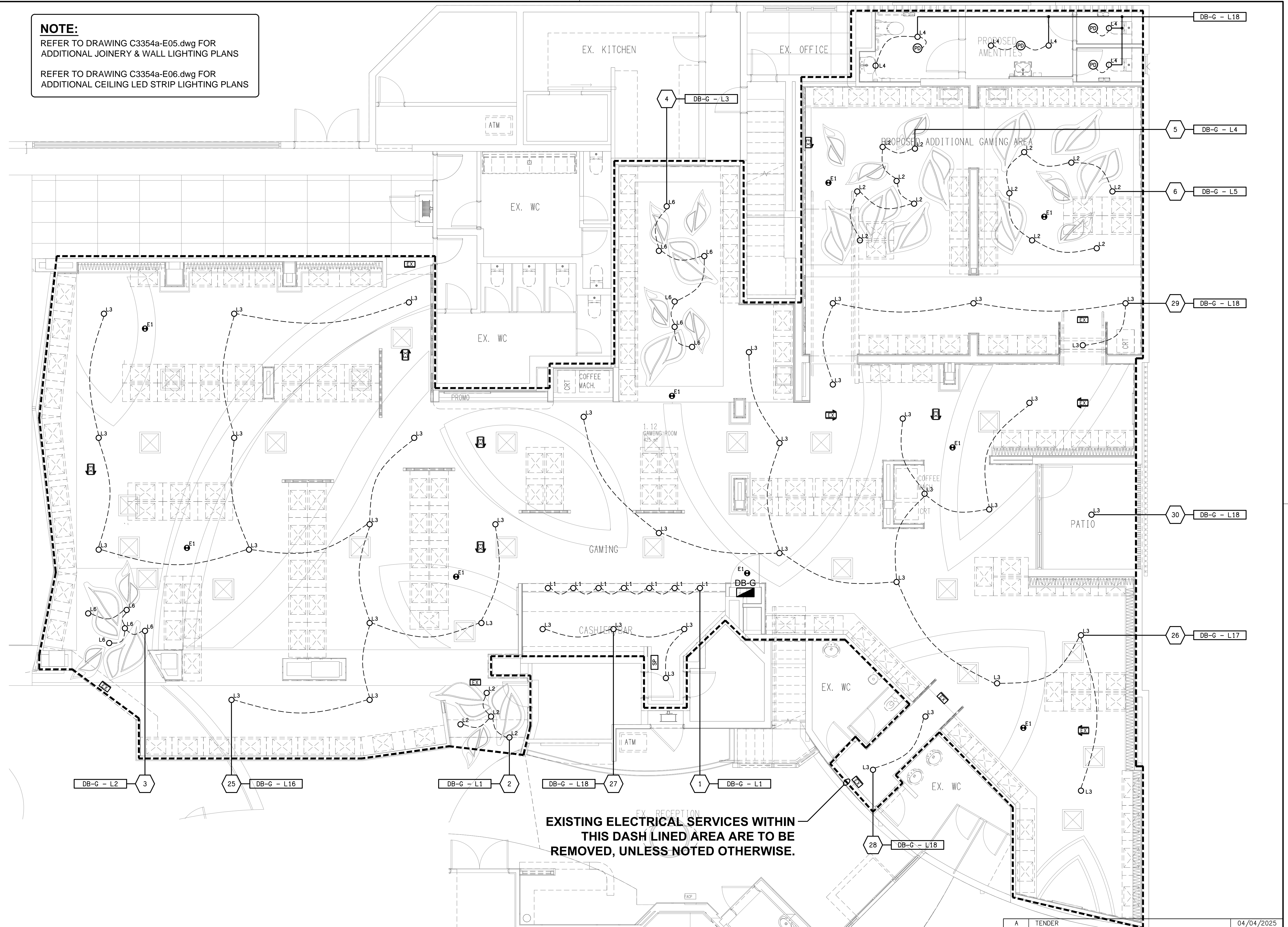


**NOTE:**

REFER TO DRAWING C3354a-E05.dwg FOR  
ADDITIONAL JOINERY & WALL LIGHTING PLANS

REFER TO DRAWING C3354a-E06.dwg FOR  
ADDITIONAL CEILING LED STRIP LIGHTING PLANS



**EXISTING ELECTRICAL SERVICES WITHIN  
THIS DASH LINED AREA ARE TO BE  
REMOVED, UNLESS NOTED OTHERWISE.**

ELECTRICAL DESIGN GROUP BRISBANE  
PTY LTD  
ACN 092 710 793  
TRADING AS:  
ELECTRICAL DESIGN GROUP

THE COPYRIGHT OF THIS DRAWING  
REMAINS THE PROPERTY OF THE  
ELECTRICAL DESIGN GROUP.  
USE FIGURED DIMENSIONS  
IN PREFERENCE TO SCALE.  
ALL DIMENSIONS TO BE  
VERIFIED ONSITE.

**ELECTRICAL DESIGN GROUP**  
ELECTRICAL BUILDING SERVICES CONSULTANTS  
BRISBANE GOLD COAST

P.O.Box 15, Sherwood Q.4075  
Phone: (07) 3278 4375  
Email: brisbane@edg.net.au  
Web: www.edg.net.au

PROJECT:  
**ASPLEY LEAGUES CLUB  
GAMING REFURBISHMENT**

29 KIRBY ROAD, ASPLEY

A	TENDER	04/04/2025
REV.	DESCRIPTION:	DATE:

DRAWING: <b>ELECTRICAL SERVICES REFLECTED CEILING PLAN</b>	PROJECT NO: <b>C3354a</b>	DRAWING NO: <b>E04</b>	REVISION: <b>A</b>
SCALE: 1:50 UNO	AT A1		