



ELECTRICAL DESIGN GROUP

ELECTRICAL BUILDING SERVICES CONSULTANTS

P.O. Box 15, SHERWOOD Q. 4075

Phone: (07) 3278 4375

Website: www.edg.net.au Email: brisbane@edg.net.au

C3377a - SUNNYBANK RUGBY CLUB

C3377a-0001(D).xls

ELECTRICAL SERVICES CONTRACT DOCUMENT SCHEDULE

REVISION D - 12 NOVEMBER 2024

ISSUING INFORMATION				DATE OF ISSUE									
	DAY	MONTH	YEAR	REASON FOR ISSUE	20	26	10	12					
					09	09	10	11					
					24	24	24	24					
					T	T	T	T					
A = APPROVAL		C = CONSTRUCTION		N = COORDINATION		P = PRELIMINARY		T = TENDER					

DISTRIBUTION				NUMBER OF COPIES							
WWW.EDG.NET.AU				1E	1E	1E	1E				
INASPACE				1E	1E	1E	1E				
REAL PROJECT SOLUTIONS				1E	1E	1E	1E				
P = PRINT				T = TRACING				D = DISC			
				E = EMAIL				F = FAX			

DOCUMENTS				REVISION							
C3377a-E01.dwg	LEGEND & SITE PLAN			A	B	C	D				
C3377a-E02.dwg	SWITCHROOM, ENTRY & AMENITIES PLANS			A		B					
C3377a-0001.xls	CONTRACT DOCUMENT SCHEDULE			A	B	C	D				
C3377a-0004.xls	UNIT RATES SCHEDULE				A						
C3377a-0005.xls	TENDER BREAKUP SCHEDULE				A						



ELECTRICAL DESIGN GROUP

ELECTRICAL BUILDING SERVICES CONSULTANTS

P.O. Box 15, SHERWOOD Q. 4075

Phone: (07) 3278 4375

Website: www.edg.net.au Email: brisbane@edg.net.au

C3377a - SUNNYBANK RUGBY CLUB

C3377a-0004(A).xls

UNIT RATES SCHEDULE

REVISION A - 26 SEPTEMBER 2024

THIS SCHEDULE OF UNIT RATES FORMS PART OF THE CONTRACT AND WILL BE USED TO ASSESS VARIATIONS TO THE CONTRACT. THE UNIT RATES OFFERED ARE TO BE FOR SUPPLY, INSTALLATION, AND TERMINATION OF EQUIPMENT IN ACCORDANCE WITH THE SPECIFICATION AND DRAWINGS, OR DELETIONS OF SAME.

ITEM	DESCRIPTION	PER	AMOUNT TO ADD	AMOUNT TO DELETE
1	LABOUR (NORMAL HOURS)	HOURLY	\$	\$
2	LABOUR (OUT OF HOURS)	HOURLY	\$	\$
3	SINGLE-PHASE ISOLATOR c/w 40m 2.5mm ² CABLE	EACH	\$	\$
4	THREE-PHASE ISOLATOR c/w 40m 2.5mm ² CABLE	EACH	\$	\$
5	BLANK WALL PLATE c/w CONDUIT TO C.S. ABOVE	EACH	\$	\$
6	25mm DIA SURFACE CONDUIT	PER METER	\$	\$
7	100mm DIA U/G POWER CONDUIT (NO TRENCHING)	PER METER	\$	\$
8	50mm DIA U/G COMMS CONDUIT (NO TRENCHING)	PER METER	\$	\$
9	UNDERGROUND CABLE TRENCH (incl BACKFILL etc)	PER METER	\$	\$
10	20A 6kA MINIATURE CIRCUIT BREAKER	EACH	\$	\$
11	20A 6kA RCBO	EACH	\$	\$
12	DIRECT 240 VOLT CONNECTION c/w 40m 2.5mm ² CABLE	EACH	\$	\$
13	2C 2.5 mm ² Cu PVC/PVC + E	PER METER	\$	\$
14	4C 16 mm ² Cu PVC/PVC + E	PER METER	\$	\$
15	L1 LIGHT FITTING	EACH	\$	\$
16	L2 LIGHT FITTING	EACH	\$	\$
17	L3 LIGHT FITTING	EACH	\$	\$
18	L4 LIGHT FITTING	EACH	\$	\$
19	L5 LIGHT FITTING	EACH	\$	\$



ELECTRICAL DESIGN GROUP

ELECTRICAL BUILDING SERVICES CONSULTANTS

P.O. Box 15, SHERWOOD Q. 4075

Phone: (07) 3278 4375

Website: www.edg.net.au Email: brisbane@edg.net.au

C3377a - SUNNYBANK RUGBY CLUB

C3377a-0005(A).xls

TENDER BREAKUP SCHEDULE

REVISION A - 26 SEPTEMBER 2024

ENSURE THAT ALL PRICES ARE IN ACCORDANCE WITH THE ELECTRICAL SERVICES SPECIFICATION AND THAT THE AMOUNTS FILLED IN AGAINST EACH ITEM INCLUDE ALL CHARGES SUCH AS PURCHASE OF MATERIALS, LABOUR, FREIGHT, TRAVELLING TIME, FIXING, INSTALLATION, TESTING, COMMISSIONING, AND PROFIT.

ITEM	DESCRIPTION	AMOUNT
1	SITE ESTABLISHMENT	\$
2	RELOCATION OF DB-A	\$
3	POWER CIRCUITS CONNECTIONS AND OUTLETS	\$
4	LIGHT FITTINGS AND CONTROL INCLUDING INSTALLATION	\$
5	CABLE ACCESS	\$
6	OTHER (SPECIFY)	\$
7	OTHER (SPECIFY)	\$
	TOTAL LUMP SUM TENDER PRICE	\$
	NAME OF TENDERER:	
	SIGNATURE OF TENDERER:	
	DATE:	

LEGEND

THE LIGHT FITTING SUPPLIER CONTACT DETAILS MAY BE AVAILABLE ON THE EDG WEBSITE VIA THE FOLLOWING LINK www.edg.net.au/Links/Lighting.htm				
TYPE	LAMPS	DESCRIPTION	COLOUR / ACCESSORY	CATALOGUE No
L1	1W LED AT 500 CENTRES	24V DC IP65 FESTOON LIGHTING TO BE FIXED TO A 316 STAINLESS STEEL WIRE SUPPORT SYSTEM. LOCATE THE DRIVER IN A CONCEALED ACCESSIBLE POSITION NOTED ON THE AS CONSTRUCTED DOCUMENTS. CONNECT TO THE STRUCTURE / POLES PROVIDED AS PART OF THE BUILDING WORKS AS PER THE ARCHITECTURAL DOCUMENTATION. CONTROL EACH GROUP OF L1 LIGHTS VIA A MANUAL SWITCH LOCATED IN THE ADJACENT CONTAINER. CIRCUIT EACH GROUP OF L1 FITTINGS FROM THE ADJACENT CONTAINERS LIGHTING CIRCUIT.	BLACK CABLE AND FIXINGS 316 STAINLESS STEEL SUPPORT AND FIXINGS	GLOW WORM LIGHTING 1M (2 GLOBE/M) COMMERCIAL GRADE LED FESTOON LIGHTING
L2	36W LED 4000K	SURFACE MOUNTED IP66 1200 LONG BATTEN C/W INTEGRAL DRIVER, OCCUPANCY SENSOR AND AN AS2293 NON MAINTAINED EMERGENCY PACK	LIGHT GREY	GAMMA STORM 1558-CCT-36 + SENSOR
L3	36W LED 4000K	SURFACE MOUNTED IP66 1200 LONG BATTEN C/W INTEGRAL DRIVER AND OCCUPANCY SENSOR	LIGHT GREY	GAMMA STORM 1558-CCT-36 + SENSOR
L4	13W 4000K LED	RECESSED 47 DEG BEAM DOWNLIGHT C/W REMOTE DRIVER	WHITE TRIM	GAMMA ILLUMINATION MYLO 1004-WFL-4K-13W
L5	RELOCATE THE EXISTING WALL MOUNTED EXAMINATION LIGHT AND ASSOCIATED SWITCH - CONFIRM THE FINAL POSITION ON SITE WITH THE OPERATOR,			
L6	28W 3000K LED	LIGHTING BOLLARD C/W INTEGRAL DRIVER AND A RAGBOLT FOOTING. CIRCUIT AND SWITCH THE L6 FITTINGS WITH THE ADJACENT L1 FITTINGS.	BLACK	GAMMA ILLUMINATION BOLO 1462-3K-28W
PROXIMITY DETECTOR SWITCH (PD)		ADJUSTABLE FLUSH RECESSED 360 DEGREE PIR PRESENCE DETECTOR TO OPERATE THE ASSOCIATED LIGHTS FOR A PRE-SET AMOUNT OF TIME. ADJUST THE TIME AND SENSITIVITY ON SITE AS DIRECTED BY THE ENGINEER. SUBMIT DETAILS OF THE MOVEMENT DETECTOR SWITCH FOR APPROVAL PRIOR TO ORDERING	WHITE	CLIPSAL
HAND DRYER CONNECTION (HD)		DIRECT CONNECT THE HAND DRYER SUPPLIED BY THE BUILDER VIA A CONCEALED CABLE.		
SIGN CONNECTION		COORDINATE THE LOCATION AND CONNECTION WITH THE SIGN CONTRACTOR ENSURING THE GPO / ISOLATORS ARE PROVIDED WITH APPROPRIATE WEATHER PROTECTION AND ARE CONCEALED FROM VIEW.		
SINGLE-PHASE ISOLATOR		SINGLE-PHASE WEATHERPROOF ISOLATOR CONNECTED TO THE ROOF MOUNTED EXHAUST FAN.		
THREE-PHASE ISOLATOR		THREE-PHASE CONNECTION TO THE CONTAINER DISTRIBUTION BOARD COORDINATE THE LOCATION AND CABLE ACCESS WITH EH CONTAINER SUPPLIER.		
DB-1		RELOCATE THE EXISTING DISTRIBUTION BOARD DB-1 AS NOMINATED. PROVIDE NEW SWITCHGEAR AND CONTROLS WITHIN DB-1 OF THE SAME BRAND AND TYPE AS THE EXISTING AS PER THE CIRCUIT DESCRIPTIONS BELOW. UPDATE THE SCHEDULE AT PRACTICAL COMPLETION. PROVIDE DB-1 WITH AN AS2293 TEST FACILITY. UPGRADE DB-1 AS NECESSARY TO ACCOMMODATE THE ADDITIONAL CIRCUITS.		
CIRCUIT DB-1 - P1		PROVIDE A NEW CIRCUIT DB-1 - P1 AS A SINGLE PHASE 20 AMP RCBO PROTECTED 2.5MM CIRCUIT SUPPLYING THE HAND DRYERS.		
CIRCUIT DB-1 - P2		PROVIDE A NEW CIRCUIT DB-1 - P2 AS A SINGLE PHASE 20 AMP RCBO PROTECTED 2.5MM CIRCUIT SUPPLYING THE HAND DRYERS.		
CIRCUIT DB-1 - P3		PROVIDE A NEW CIRCUIT DB-1 - P3 AS A SINGLE PHASE 20 AMP RCBO PROTECTED 2.5MM CIRCUIT CONTROLLED VIA A 24 / 7 TIME CLOCK TO SUPPLY THE ROOF MOUNTED EXHAUST FAN.		
CIRCUIT DB-1 - P4		PROVIDE A NEW CIRCUIT DB-1 - P4 AS A THREE PHASE 63 AMP 4C 16MM CIRCUIT RUN UNDERGROUND IN CONDUIT BETWEEN THE BUILDINGS SUPPLYING THE COFFEE CONTAINER DISTRIBUTION BOARD.		
CIRCUIT DB-1 - P5		PROVIDE A NEW CIRCUIT DB-1 - P5 AS A THREE PHASE 63 AMP 4C 16MM CIRCUIT RUN UNDERGROUND IN CONDUIT BETWEEN THE BUILDINGS SUPPLYING THE BAR CONTAINER DISTRIBUTION BOARD.		
CIRCUIT DB-1 - L1		PROVIDE A NEW CIRCUIT DB-1 - L1 AS A SINGLE PHASE 20 AMP RCBO PROTECTED 2.5MM CIRCUIT RUN UNDERGROUND IN CONDUIT BETWEEN THE BUILDINGS SUPPLYING THE ILLUMINATED SIGNAGE. CONTROL THE CIRCUIT SUCH THAT IT AUTOMATICALLY SWITCHES ON VIA A PE CELL 30 MINUTES PRIOR TO DUSK AND OF VIA A TIME CLOCK. CONFIRM THE TIME WITH THE OPERATOR.		
CIRCUIT DB-1 - L2		PROVIDE A NEW CIRCUIT DB-1 - L2 AS A SINGLE PHASE 20 AMP RCBO PROTECTED 2.5MM LIGHTING CIRCUIT. IT IS ACCEPTABLE TO UTILISE AN EXISTING LIGHTING CIRCUIT IF IT HAS SUFFICIENT CAPACITY.		

NOTES

1. EXTENT OF WORKS

THE ELECTRICAL SERVICES SUB-CONTRACT INCLUDES BUT IS NOT LIMITED TO THE FOLLOWING:

- SUPPLY AND INSTALLATION OF ALL COMPONENTS FORMING PART OF THE ELECTRICAL SERVICES.
- CO-ORDINATION.
- INSPECTIONS.
- TESTING AND COMMISSIONING.
- MAINTENANCE.
- CABLING, CABLE SUPPORT SYSTEMS AND ACCESS.
- POWER DISTRIBUTION.
- LIGHTING.
- ALL MINOR COMPONENTS AND INCIDENTAL WORKS NOT SPECIFICALLY REFERRED TO, HOWEVER NECESSARY TO COMPLETE THE ELECTRICAL SERVICES INSTALLATION SUCH THAT IT IS HANDED OVER COMPLETE, OPERATIONAL AND FIT FOR THE INTENDED USE.

PRIOR TO COMMENCING WORK CONSULT SITE MANAGEMENT FOR ANY HAZARDOUS MATERIAL AND OR ASBESTOS REGISTERS AS WELL AS UNDERTAKE A THOROUGH INSPECTION OF THE SITE TO IDENTIFY ANY POTENTIAL HAZARDOUS MATERIALS, ASBESTOS AND HEALTH OR SAFETY RISKS. ADVISE THE CONTRACTOR OF ANY POTENTIAL HAZARDOUS MATERIALS, ASBESTOS AND HEALTH OR SAFETY RISKS IF IDENTIFIED AND DO NOT COMMENCE WORK UNTIL AN APPROPRIATE MANAGEMENT PLAN HAS BEEN DEVELOPED AND AGREED TO BY ALL PARTIES.

SUPPLY ALL LABOUR, MATERIALS, EQUIPMENT, AND ALL OTHER ITEMS, WHETHER MENTIONED IN DETAIL OR NOT, REQUIRED FOR THE SATISFACTORY COMPLETION OF THE ELECTRICAL SERVICES INSTALLATION, LEAVING IN FULL WORKING ORDER TO THE SATISFACTION OF THE PROJECT MANAGER.

ACCEPT FULL RESPONSIBILITY FOR LIASING, ARRANGING AND CO-ORDINATION ALL WORKS THAT HAVE AN EFFECT ON OR WILL BE AFFECTED BY THE ELECTRICAL SERVICES.

REMOVE ALL OF THE EXISTING ELECTRICAL SERVICES THAT BECOME REDUNDANT DUE TO THE WORKS.

2. WORKMANSHIP

ENSURE THAT THE WORK IS PERFORMED BY THE HOLDER OF A CURRENT ELECTRICAL SUB CONTRACTOR LICENSE. ENSURE THE INSTALLATION AND ALL COMPONENTS, FIXTURES, FITTINGS, OUTLETS AND CABLES ARE SUPPLIED AND INSTALLED TO A HIGH STANDARD THROUGHOUT, AND INSTALLED IN A NEAT AND TRADESMAN LIKE MANNER, TO THE CURRENT INDUSTRY STANDARDS. ENSURE ALL MATERIALS AND COMPONENTS OF A SIMILAR TYPE ARE OF THE SAME MANUFACTURER AND INSTALLED IN A UNIFORM MANNER.

IT IS THE ELECTRICAL SUB CONTRACTOR'S RESPONSIBILITY TO ENSURE THAT THE INSTALLATION IS FIT FOR PURPOSE AND IS PROVIDED AS A COMPLETE WORKING INSTALLATION. IT IS THE ELECTRICAL SUB CONTRACTOR'S RESPONSIBILITY TO PROVIDE ALL COMPONENTS, FITTINGS, FIXTURES, SYSTEMS, PROGRAMMING ETC IRRESPECTIVE OF THE LEVEL DETAILED IN THE DOCUMENTS SUCH THAT THE INSTALLATION IS PROVIDED AS A COMPLETE WORKING INSTALLATION.

CONCEAL ALL WIRING AND CONDUITS. EXPOSED CABLING OR CONDUITS ARE GENERALLY NOT ACCEPTABLE. IT IS NOTED THAT CHASING AND REINSTATEMENT WILL BE REQUIRED. CABLING BETWEEN THE MAIN BUILDING AND THE REMOTE STRUCTURES IS TO BE RUN UNDERGROUND IN CONDUIT. ENSURE ALL COMPONENTS, EQUIPMENT AND MATERIALS SUPPLIED ARE NEW, UNUSED, DESIGNED AND SELECTED TO ENSURE SATISFACTORY OPERATION UNDER VARYING ATMOSPHERIC, CLIMATIC, HUMID TROPICAL CONDITIONS WITHOUT DISTORTION AND DETERIORATION IN ANY PART AFFECTING EFFICIENCY AND RELIABILITY OF THE SYSTEMS. DESIGN AND SELECT ALL EQUIPMENT TO PROVIDE THE NECESSARY SAFETY TO HUMAN LIFE AND PROPERTY DURING OPERATION AND MAINTENANCE WITH PARTICULAR ATTENTION GIVEN TO ELECTRICAL SAFETY AND SEGREGATION PRECAUTIONS.

CHECK THE FINISHED PAINTWORK AROUND THE AREA OF EACH INSTALLATION AND TOUCH UP ALL DAMAGED PARTS AND FINISHES AFTER THE INSTALLATION OF THE ELECTRICAL SERVICES.

ALL WORKS ARE TO BE CARRIED OUT IN ACCORDANCE WITH THE BUILDER'S PROGRAM. ENSURE ALL FINAL LOCATIONS OF OUTLETS AND FITTINGS ARE CO-ORDINATED ONSITE WITH THE ARCHITECT AND ALL OTHER SERVICES, TO THE APPROVAL OF THE PROJECT MANAGER. ALLOW TO CO-ORDINATE THE FINAL LOCATION OF ALL EQUIPMENT, FITTINGS, & OUTLETS, SUCH THAT THEY ARE INSTALLED IN ACCORDANCE WITH THE AS3000 RESTRICTED ZONES, AND ARE NOT COVERED INAPPROPRIATELY.

ENSURE THAT ALL METAL SURFACES ARE SUITABLY PROTECTED AGAINST CORROSION, AND THAT ALL PLASTIC MATERIALS ARE UV STABILISED.

PROVIDE ALL MATERIALS AS NEW, AND OF THE HIGHEST CLASS AVAILABLE FOR THEIR RESPECTIVE TYPES. ENSURE ALL ASPECTS OF THE WORK ARE OF A HIGH STANDARD THROUGHOUT, AND INSTALLED IN A NEAT AND TRADESMAN LIKE MANNER, TO THE CURRENT INDUSTRY STANDARDS.

NOTES

3. STANDARDS

IRRESPECTIVE OF INFORMATION CONTAINED IN THE ELECTRICAL SERVICES DOCUMENTS OR IN INSTRUCTIONS, IT IS THE ELECTRICAL SUB CONTRACTOR'S RESPONSIBILITY TO ENSURE ALL ELECTRICAL SERVICES WORKS ARE INSTALLED IN ACCORDANCE WITH THE REQUIREMENTS OF THE FOLLOWING. REFER ANY DISCREPANCIES BETWEEN THE REQUIREMENTS OF THE FOLLOWING AND/OR THE ELECTRICAL SERVICES DOCUMENTS AND INSTRUCTIONS TO THE ARCHITECT FOR CLARIFICATION PRIOR TO THE PLACING OF ORDERS, FABRICATION OR INSTALLATION OF THE ITEMS/METHODS IN DISCREPANCY.

- NCC BUILDING CODE OF AUSTRALIA.
- ELECTRICITY ACT.
- ELECTRICAL SAFETY ACT.
- AS/NZS3000.
- AS3008.
- WORKPLACE HEALTH AND SAFETY ACT.
- TELECOMMUNICATIONS ACT.
- ACMA REQUIREMENTS.

4. AUTHORITIES

ENSURE ALL OF THE ELECTRICAL SERVICES COMPLY WITH THE REQUIREMENTS OF ALL REGULATORY AUTHORITIES HAVING JURISDICTION OVER THE SITE INCLUDING BUT NOT LIMITED TO THE FOLLOWING:

- ACMA.
- LOCAL COUNCIL.
- LOCAL SUPPLY AUTHORITY.
- STATE GOVERNMENT DEPARTMENT OF ENVIRONMENT AND HERITAGE.
- QLD GOVERNMENT, DIVISION OF WORKPLACE, HEALTH AND SAFETY.
- QLD FIRE AND RESCUE AUTHORITY.

5. CABLES

UNLESS OTHERWISE SPECIFIED, INSTALL AND TERMINATE CABLES IN ACCORDANCE WITH THE MANUFACTURERS' RECOMMENDATIONS. DETERMINE THE FINAL ROUTES TO SUIT THE BUILDING STRUCTURE AND SITE CONDITIONS. UNLESS NOTED OTHERWISE, PROVIDE ALL 240 VOLT POWER AND LIGHTING WIRING AS 2.5mm² TWIN & EARTH STRANDED COPPER CONDUCTORS, PVC INSULATED 0.6/1kV V75 GRADE TO AS3174, PROTECTED BY A 20 AMP CIRCUIT BREAKER. ALL CONDUIT AND FITTINGS TO BE RIGID UPVC TO AS2053, UNLESS NOTED OTHERWISE.

6. POWER DISTRIBUTION

THE POWER DISTRIBUTION COMPONENT OF THIS CONTRACT INCLUDES THE RELOCATION OF DB-1 INCLUDING THE SUBMAINS AND ALL EXISTING OUTGOING CIRCUITS. ADDITIONAL SWITCHGEAR AND CONTROLS IS TO BE PROVIDED IN DB-1 TO SUPPLY THE NEW CIRCUITS. ALL OF THE EXISTING DB-C CIRCUITS THAT BECOME REDUNDANT ARE TO BE REMOVED AND THE LABELLING UPDATED. IT IS ACCEPTABLE TO UTILISE EXISTING CIRCUITS TO SUPPLY THE NEW POINTS AND OUTLETS IF THEY ARE IN APPROPRIATE CONDITION AND HAVE SUFFICIENT CAPACITY. THE POWER DISTRIBUTION COMPONENT OF THIS CONTRACT INCLUDES, BUT IS NOT LIMITED TO THE FOLLOWING EXTENT OF WORK:

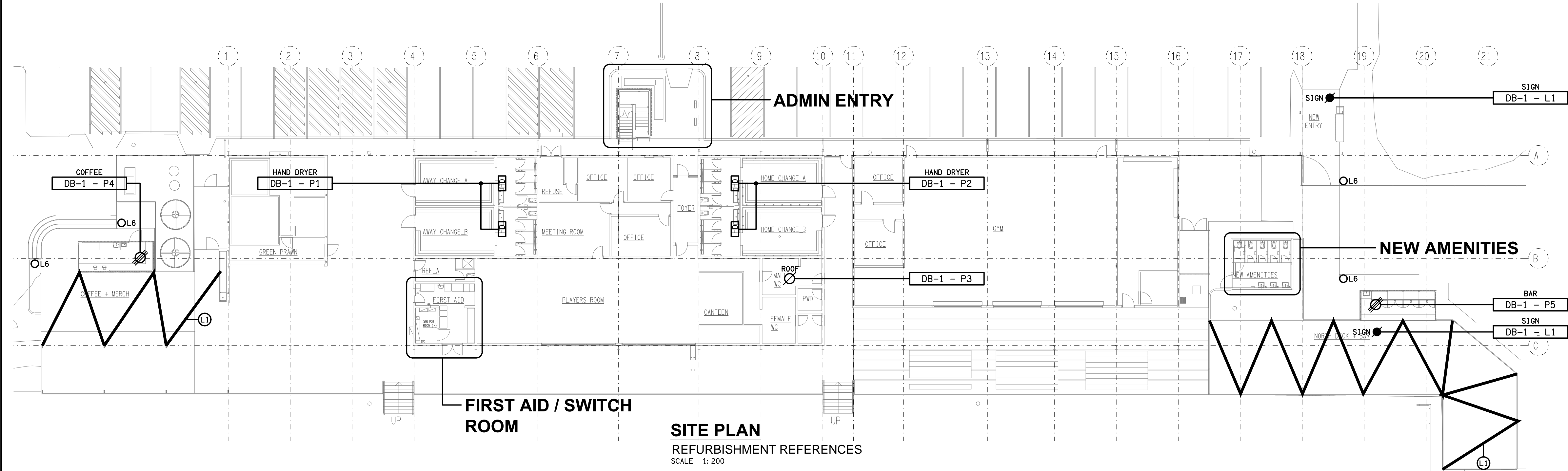
- POWER DISTRIBUTION.
- EARTHING.
- RELOCATION OF DB-1 INCLUDING THE EXISTING SUBMAINS AND CIRCUITS.
- NEW SWITCHGEAR AND CONTROLS IN DB-1 TO ACCOMMODATE THE NEW CIRCUITS.
- REMOVAL OF EXISTING REDUNDANT CIRCUITS.
- CIRCUITS.
- ISOLATORS AND OUTLETS.
- TESTING AND COMMISSIONING.

PROVIDE THE OPERATOR WITH TWO WEEKS NOTIC OF ANY INTERRUPTIONS TO THE POWER SUPPLY.

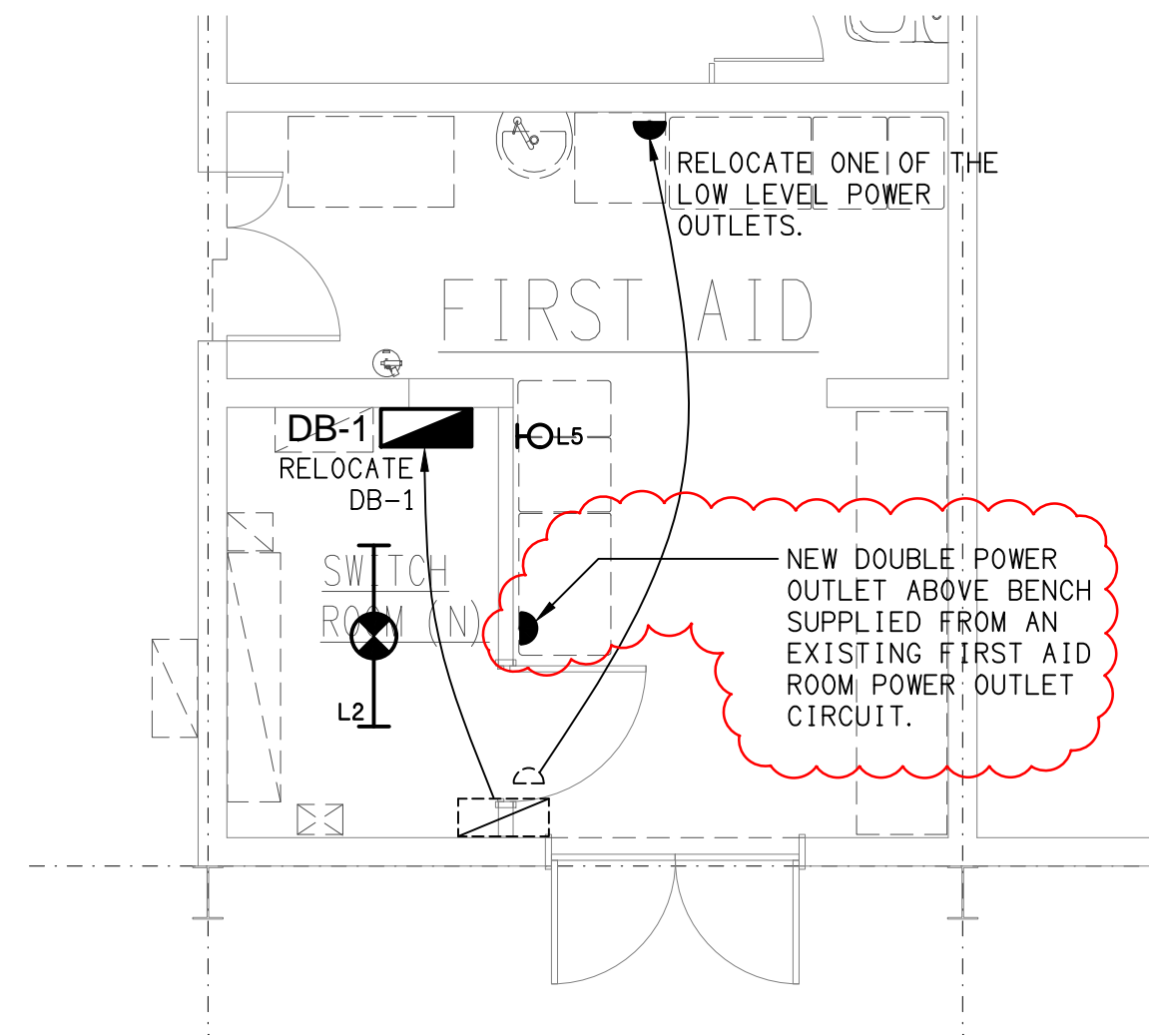
7. LIGHTING

ALL OF THE LIGHT FITTINGS, LAMPS AND ACCESSORIES ARE TO BE PROVIDED AS PART OF THIS CONTRACT. THE LIGHTING COMPONENT OF THIS CONTRACT INCLUDES, BUT IS NOT LIMITED TO THE FOLLOWING EXTENT OF WORK:

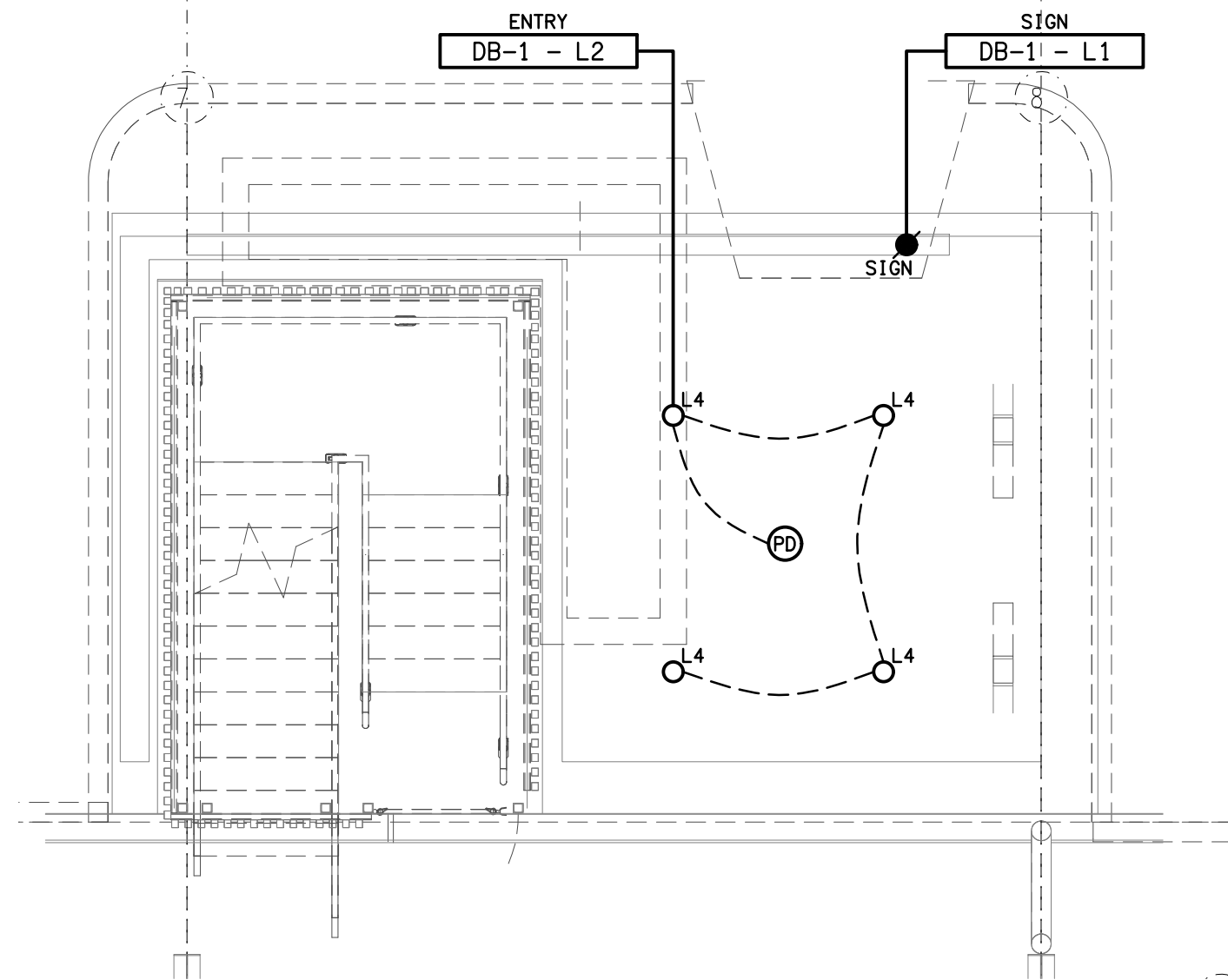
- LIGHTING.
- LIGHT FITTINGS AND ACCESSORIES.
- LAMPS.
- EARTHING OF THE LIGHTING INSTALLATION.
- LIGHTING CONTROL.
- LIGHTING SUBCIRCUITS.
- TESTING AND COMMISSIONING.



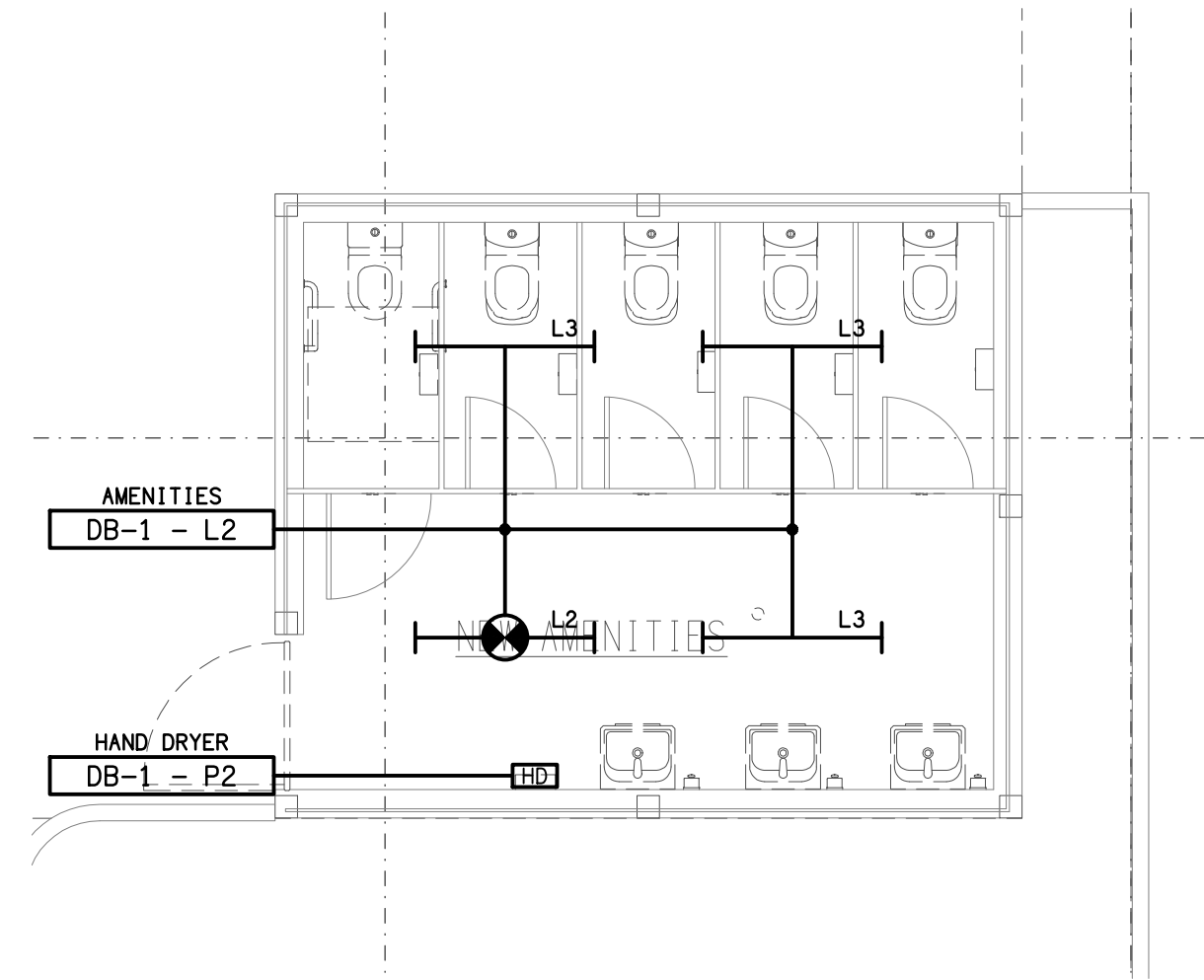
<div>ELECTRICAL DESIGN GROUP BRISBANE PTY LTD ACN 092 710 793</div> <div>TRADING AS: ELECTRICAL DESIGN GROUP</div>	THE COPYRIGHT OF THIS DRAWING REMAINS THE PROPERTY OF THE ELECTRICAL DESIGN GROUP.	<div> ELECTRICAL DESIGN GROUP</div> <div>ELECTRICAL BUILDING SERVICES CONSULTANTS</div> <div>BRISBANE GOLD COAST</div> <div>P.O.Box 15, Sherwood Q.4075 Phone: (07) 3278 4375 Email: brisbane@edg.net.au Web: www.edg.net.au</div>	PROJECT: SUNNYBANK RUGBY CLUB	DRAWING: ELECTRICAL SERVICES LEGEND & SITE PLAN			
	USE FIGURED DIMENSIONS IN PREFERENCE TO SCALE.						
	ALL DIMENSIONS TO BE VERIFIED ONSITE.			162 GRANADILLA STREET, SUNNYBANK	SCALE: 1:200	AT A1	
					PROJECT NO: C3377a	DRAWING NO: E01	REVISION: D



SWITCHROOM
FLOOR / REFLECTED CEILING PLAN
SCALE 1: 50



ADMIN ENTRY
FLOOR / REFLECTED CEILING PLAN
SCALE 1: 50



NEW AMENITIES
FLOOR / REFLECTED CEILING PLAN
SCALE 1: 50