



ELECTRICAL DESIGN GROUP

ELECTRICAL BUILDING SERVICES CONSULTANTS

P.O. Box 15, SHERWOOD Q. 4075

Phone: (07) 3278 4375

Website: www.edg.net.au Email: brisbane@edg.net.au

C3388a - BOONAH STATE HIGH SCHOOL - AMENITIES UPGRADE

C3388a-0001(C).xls

ELECTRICAL SERVICES CONTRACT DOCUMENT SCHEDULE

REVISION C - 11 OCTOBER 2024

ISSUING INFORMATION				DATE OF ISSUE					
	DAY	10	11	11					
	MONTH	10	10	10					
	YEAR	24	24	24					
REASON FOR ISSUE				A	A	A			
A = APPROVAL C = CONSTRUCTION N = COORDINATION P = PRELIMINARY T = TENDER									

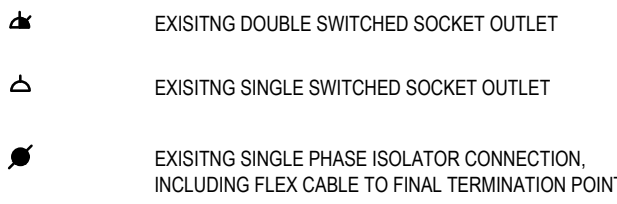
DISTRIBUTION		NUMBER OF COPIES							
WWW.EDG.NET.AU		1E	1E	1E					
ASW ELECTRICAL		1E	1E	1E					
P = PRINT T = TRACING D = DISC E = EMAIL F = FAX									

DOCUMENTS		REVISION							
C3388a-E01.dwg	LEGEND & SITE PLAN	A	B						
C3388a-E02.dwg	BLOCK A - AMENITIES JUNIOR LIGHTING LAYOUTS	A	B						
C3388a-E03.dwg	BLOCK B - AMENITIES SENIOR LIGHTING LAYOUTS	A	B						
C3388a-E04.dwg	BLOCK A - AMENITIES JUNIOR POWER LAYOUTS	A	B						
C3388a-E05.dwg	BLOCK B - AMENITIES SENIOR POWER LAYOUTS	A	B						
C3388a-E06.dwg	SCHEMATICS	A	B	C					
C3388a-0001.xls	CONTRACT DOCUMENT SCHEDULE	A	B	C					

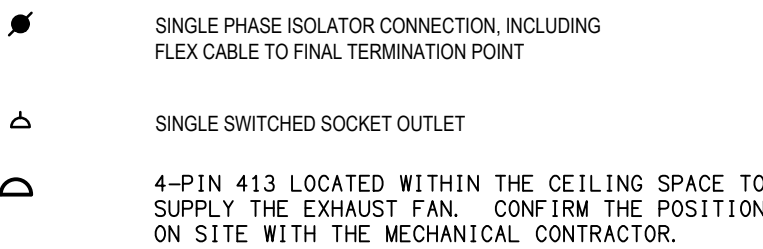
EXISTING POWER



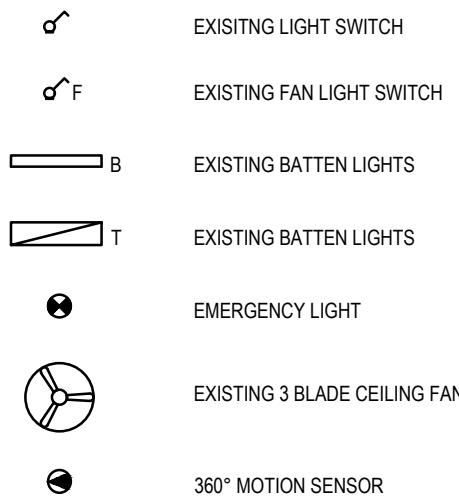
DEMOLITION POWER



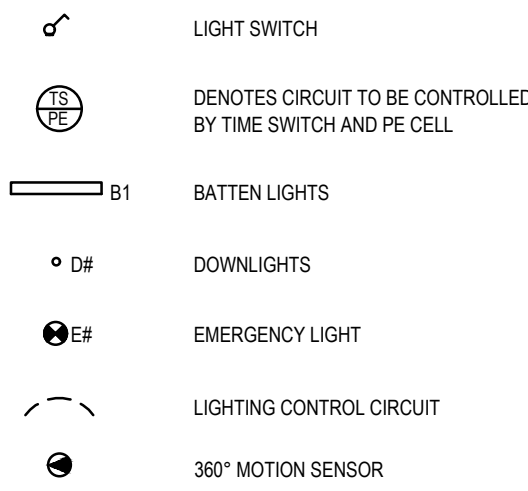
PROPOSED POWER



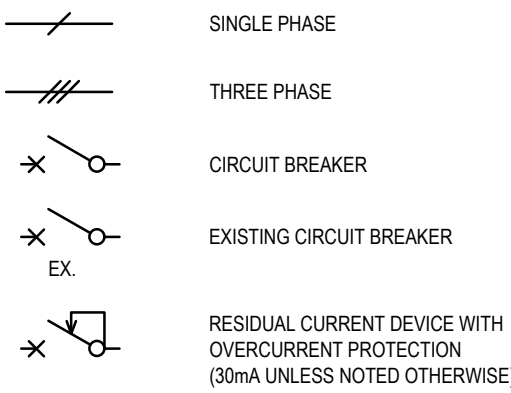
DEMOLITION LIGHTING



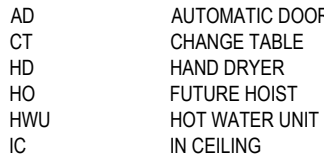
PROPOSED LIGHTING



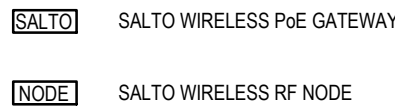
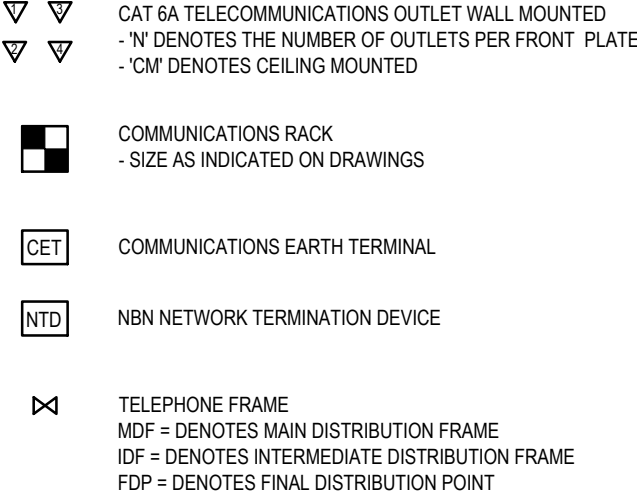
SCHEMATICS SYMBOLS



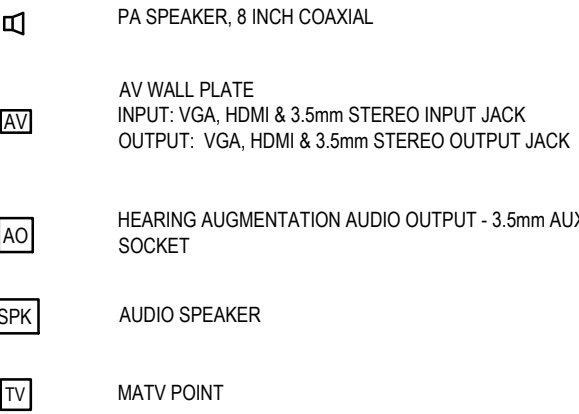
ABBREVIATIONS



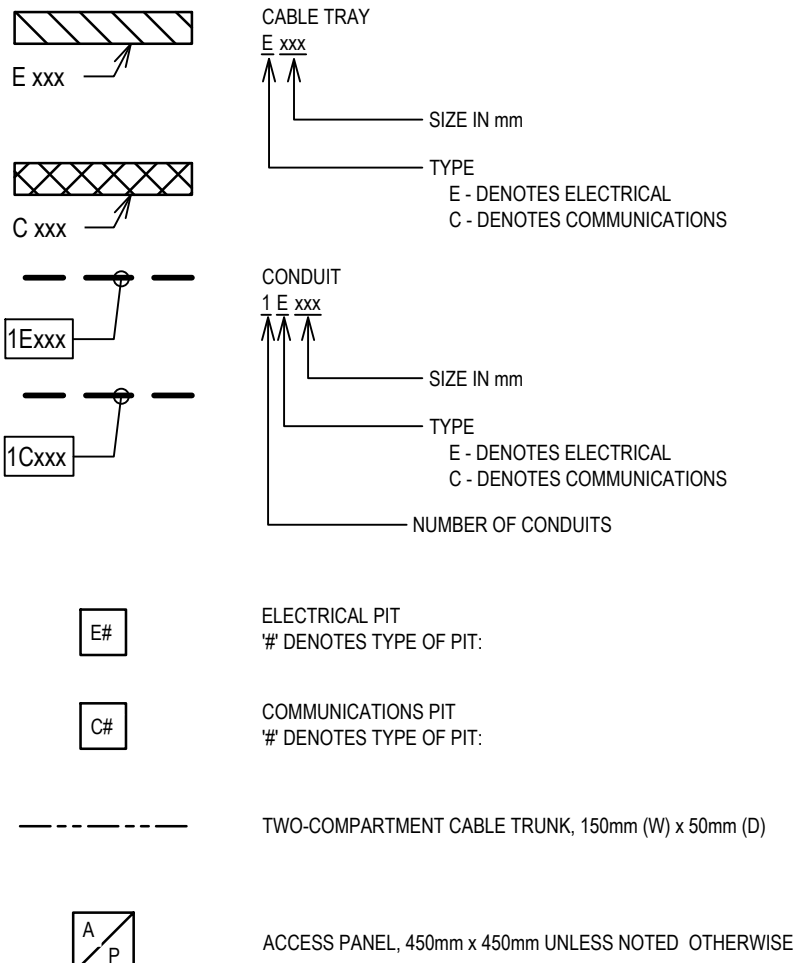
COMMUNICATIONS



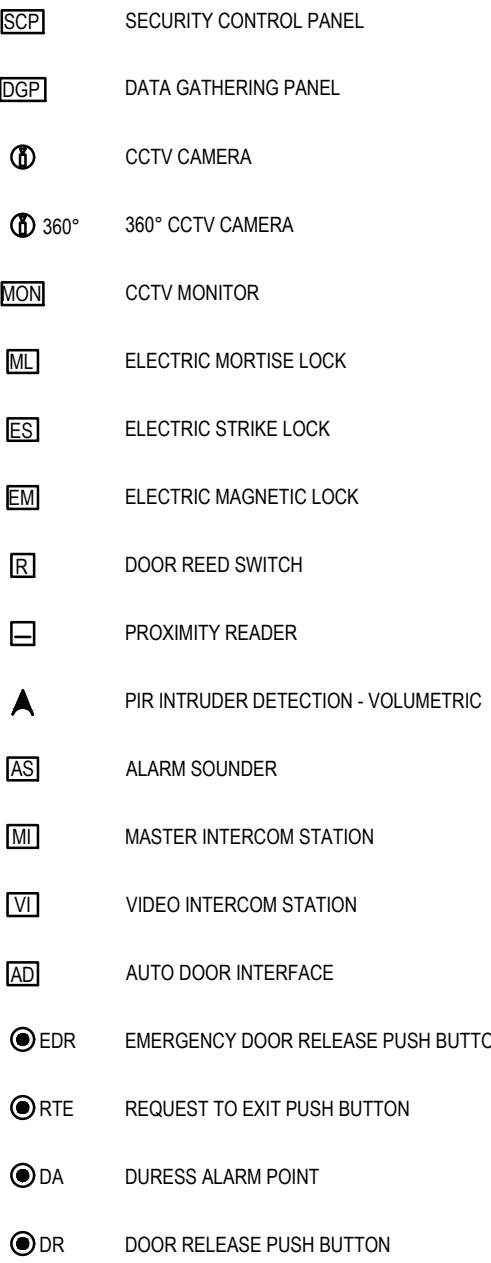
AUDIO VISUAL



CABLE CONTAINMENT



SECURITY



LUMINAIRE SCHEDULE

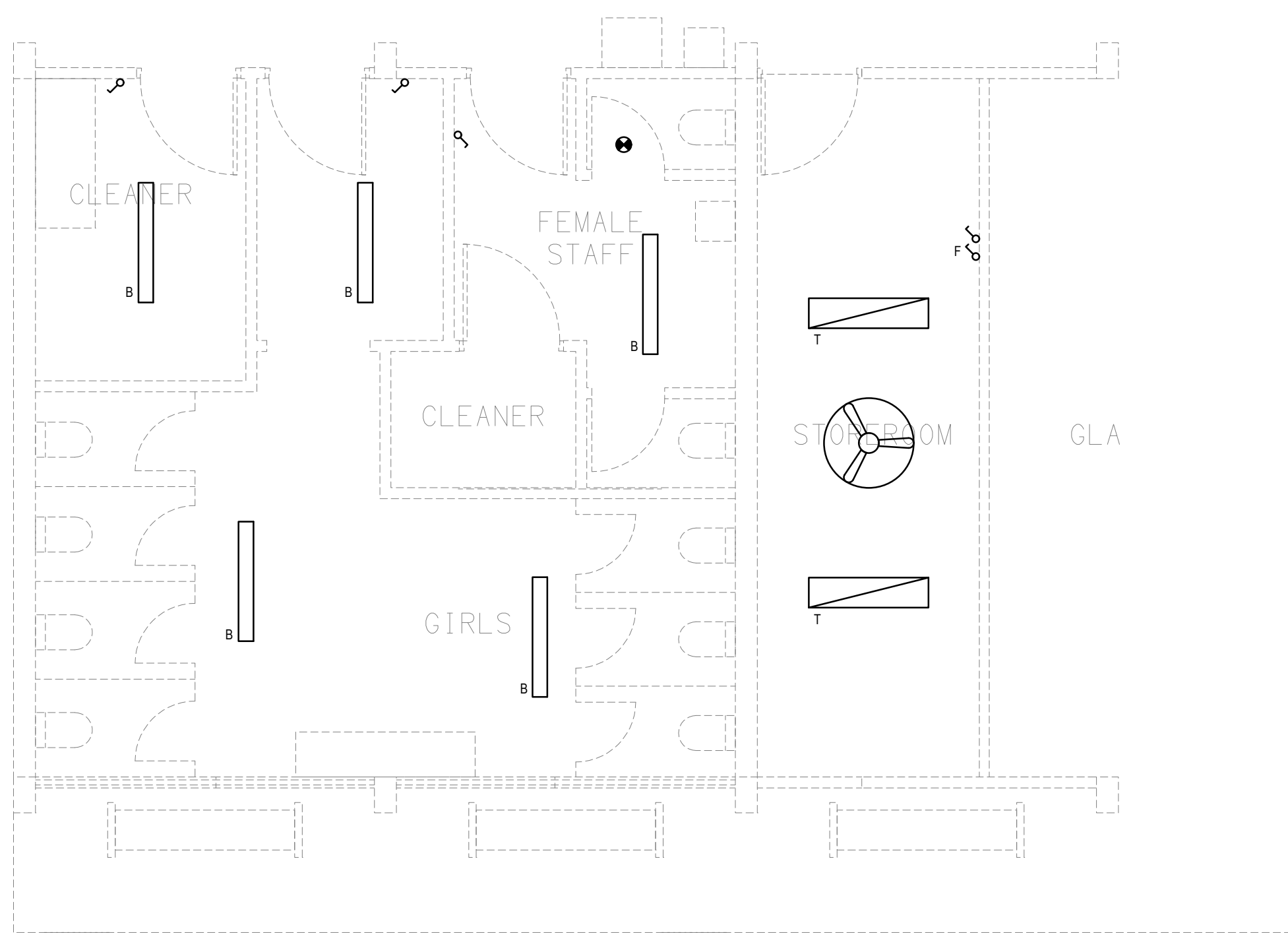
TYPE	DESCRIPTION	MANUFACTURER	PRODUCT	LIGHT SOURCE		FINISH	IP RATING	MOUNTING DETAILS/ OTHER
				Wattage	Colour Temp			
B	Batten Luminaire							
B1	1200mm Batten IK07	EVOLT	12138	40W	4000K	White	65	Surface Mounted
D	Downlights							
D1	Recessed Downlight	HANECO	HABITAT-FL-MINI	7 W	4000K	White	54	Recessed
D2	Recessed Downlight	HANECO	HABITAT-FL-TRI	10 W	4000K	White	54	Recessed
E	Emergency Luminaires							
E1	Recessed Emergency Light	EKTOR	11190	C90: D40 C0: D40		White	44	Recessed

APPROXIMATE LOCATION OF DB-A BLOCK UPPER. LOCATED ON UPPER FLOOR. CABLES TO UTILISE EXISTING PATHWAYS TO NEW AMENITIES BLOCK ON LOWER FLOOR.

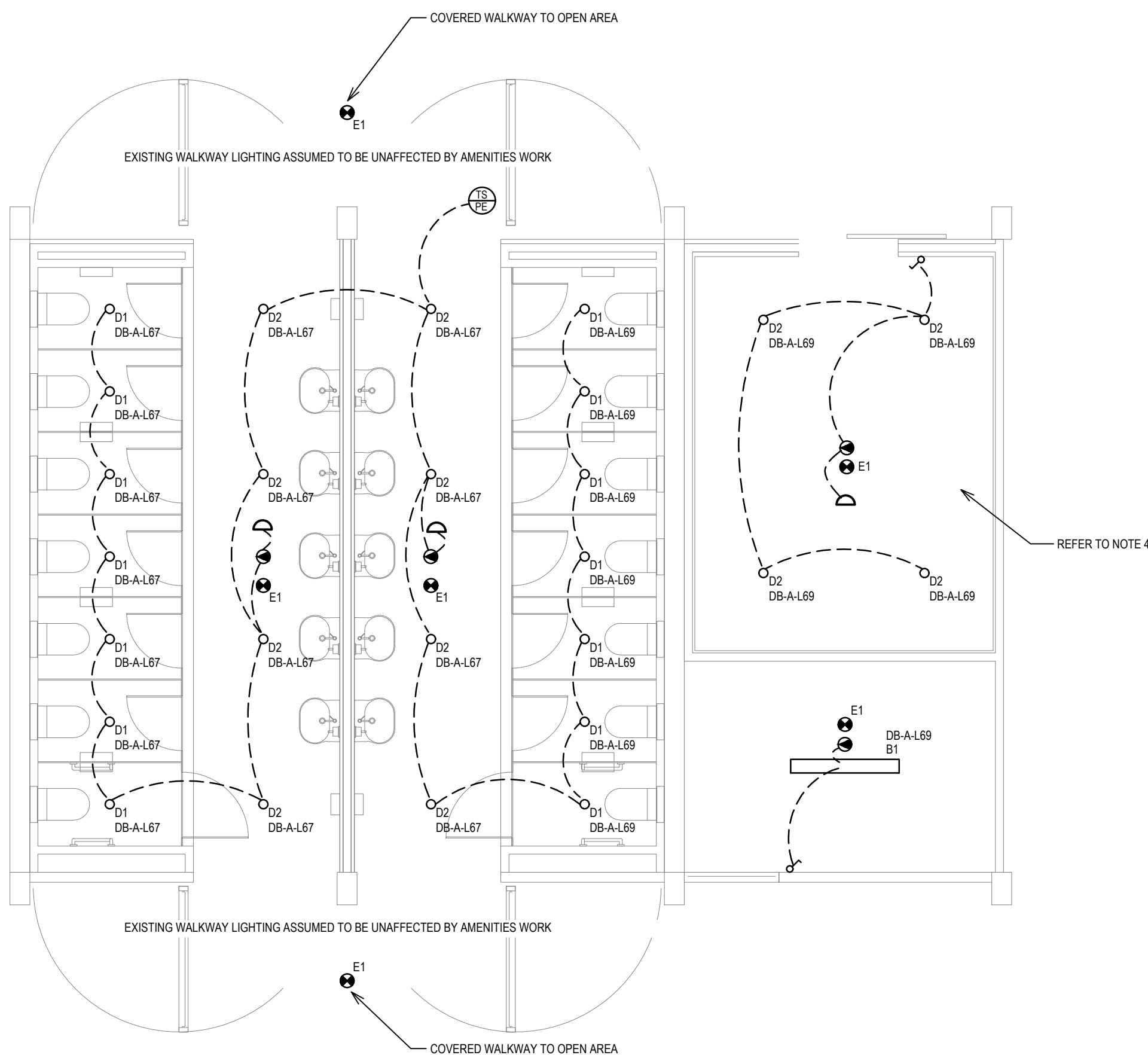
PROPOSED WORKS

APPROXIMATE LOCATION OF MSB

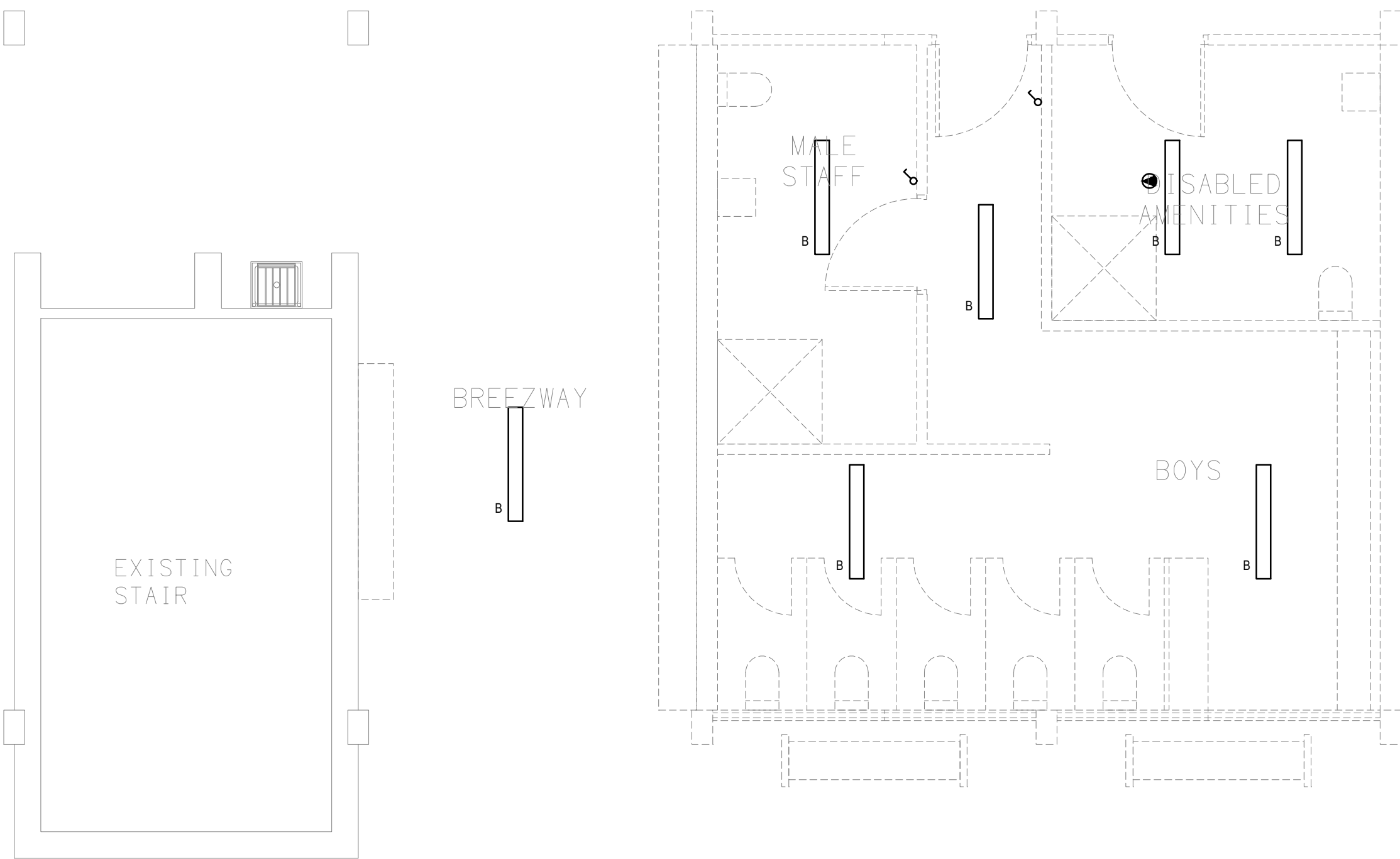
SITE PLAN
AMENITIES UPGRADE
SCALE 1: 1000 (APPROX.)



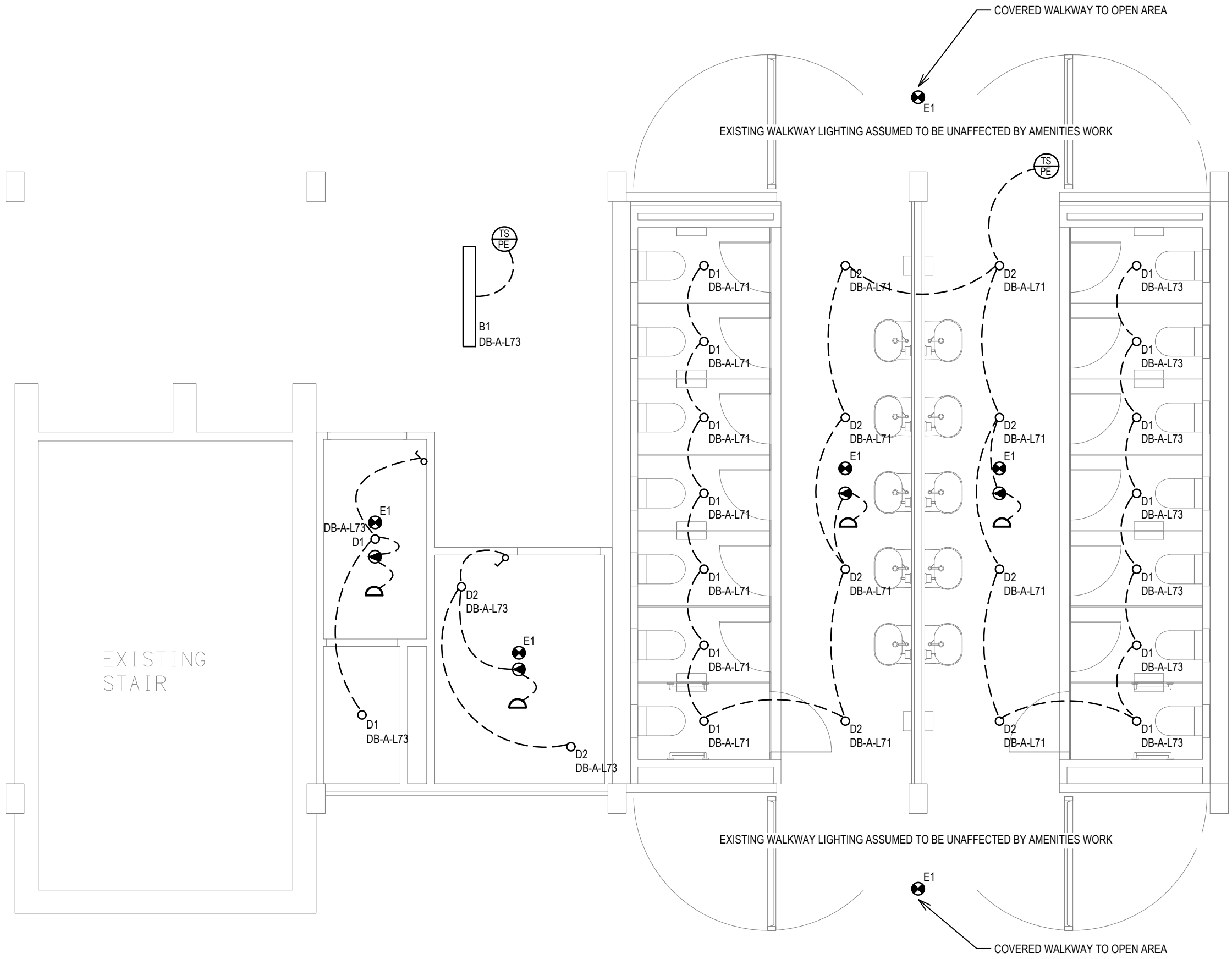
EXISTING / DEMOLITION
LIGHTING LAYOUT
SCALE 1: 50



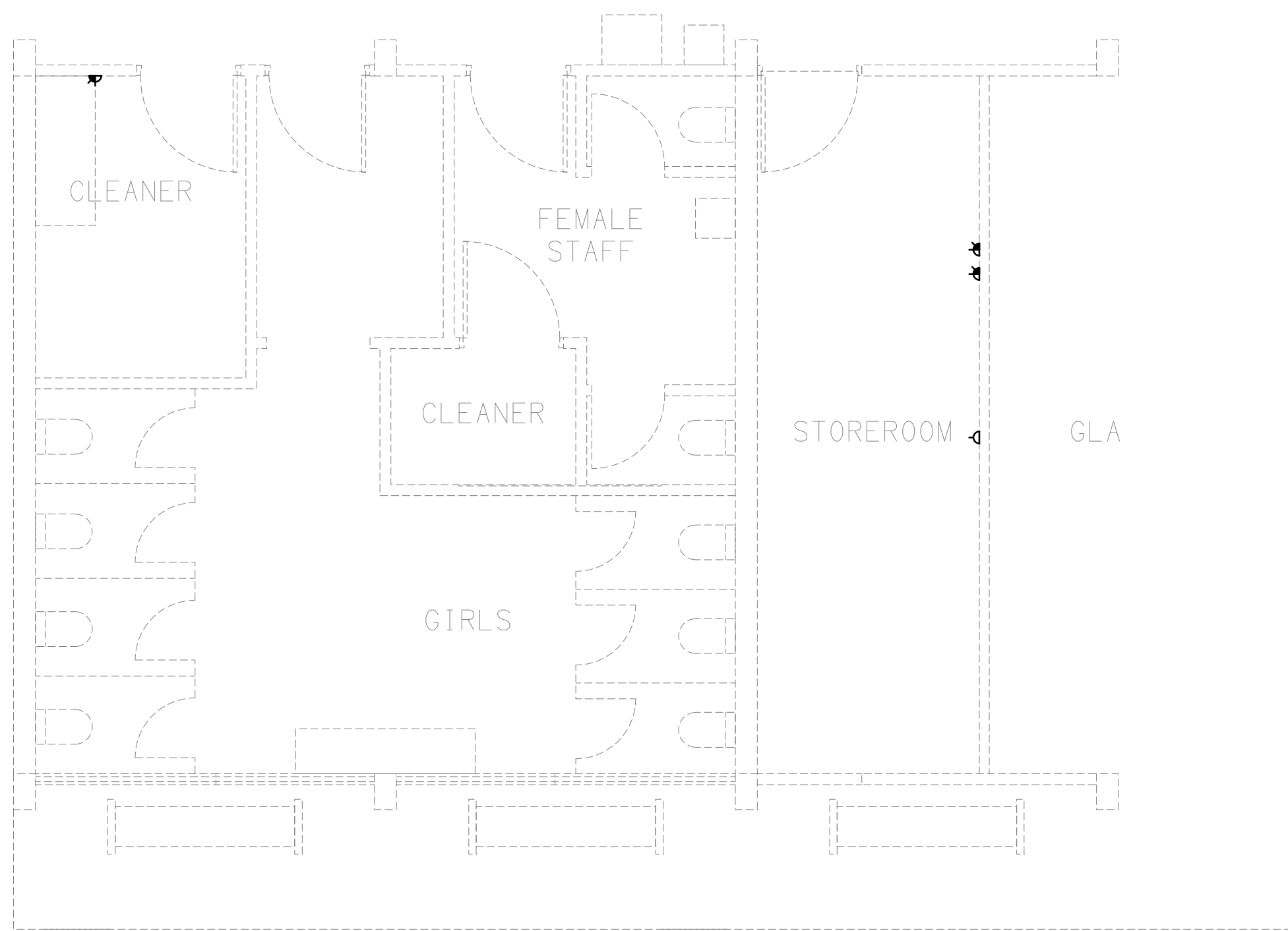
PROPOSED
LIGHTING LAYOUT JUNIOR STUDENTS
SCALE 1: 50



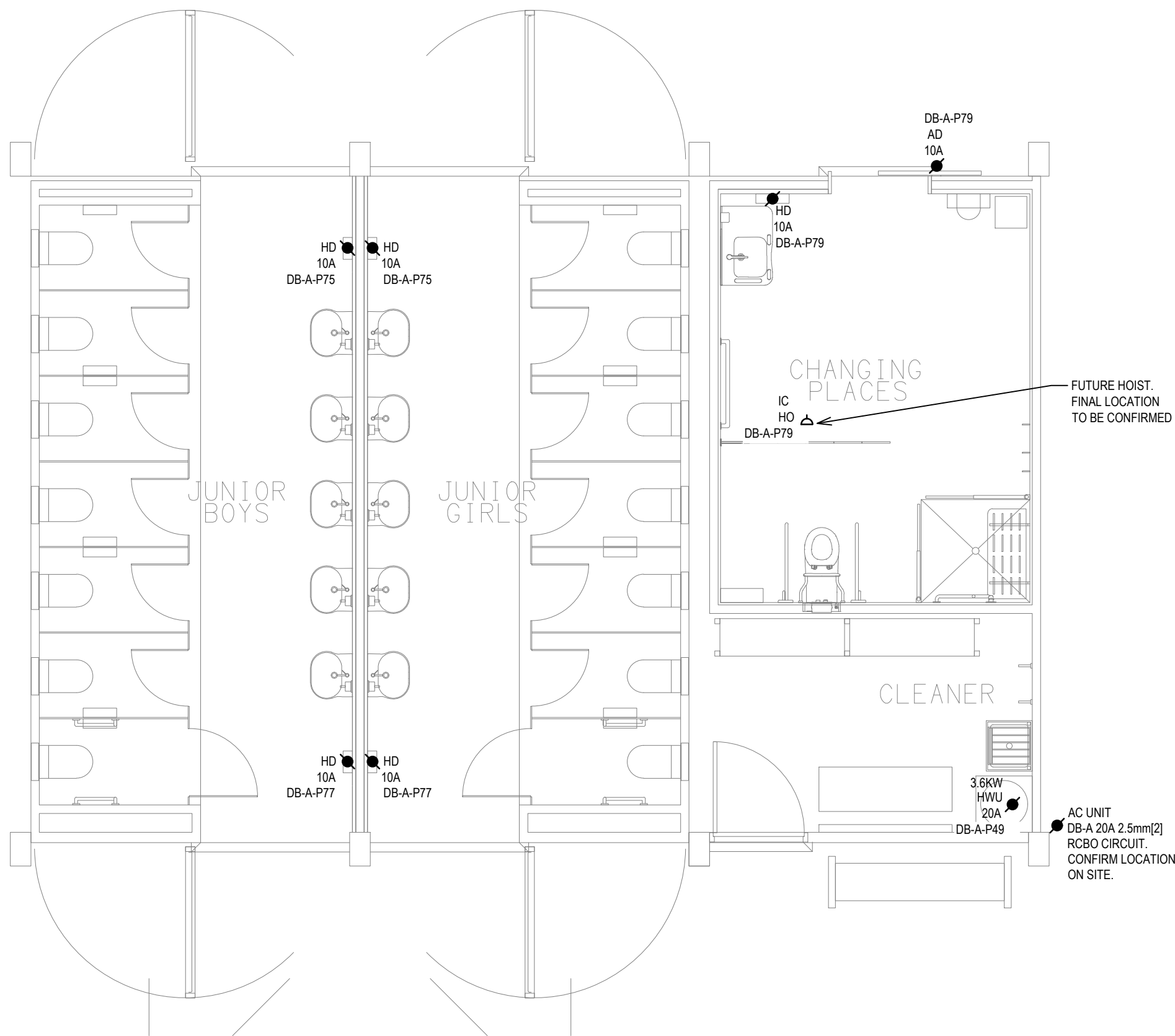
EXISTING / DEMOLITION
LIGHTING LAYOUT
SCALE 1: 50



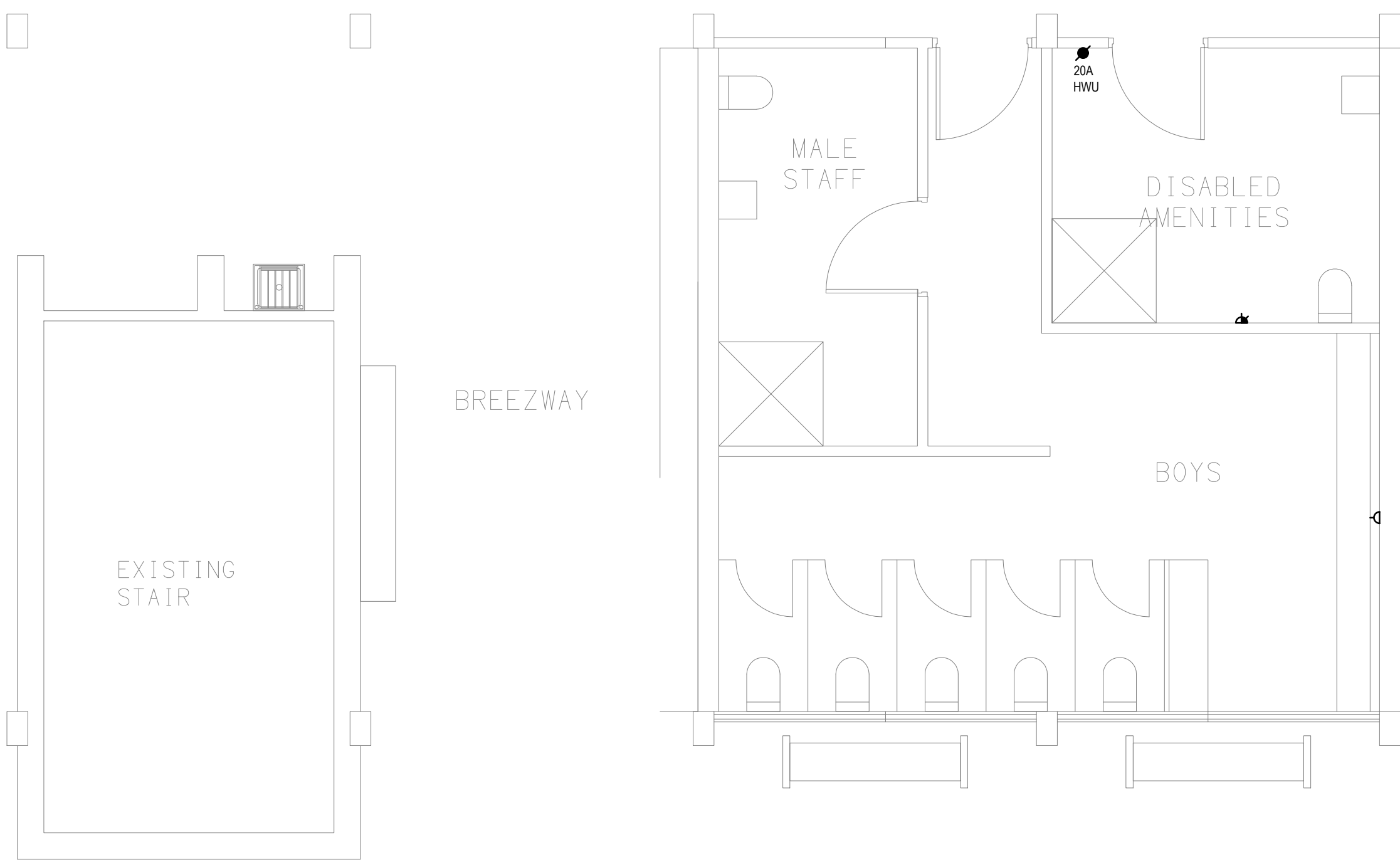
PROPOSED
LIGHTING LAYOUT SENIOR STUDENTS
SCALE 1: 50



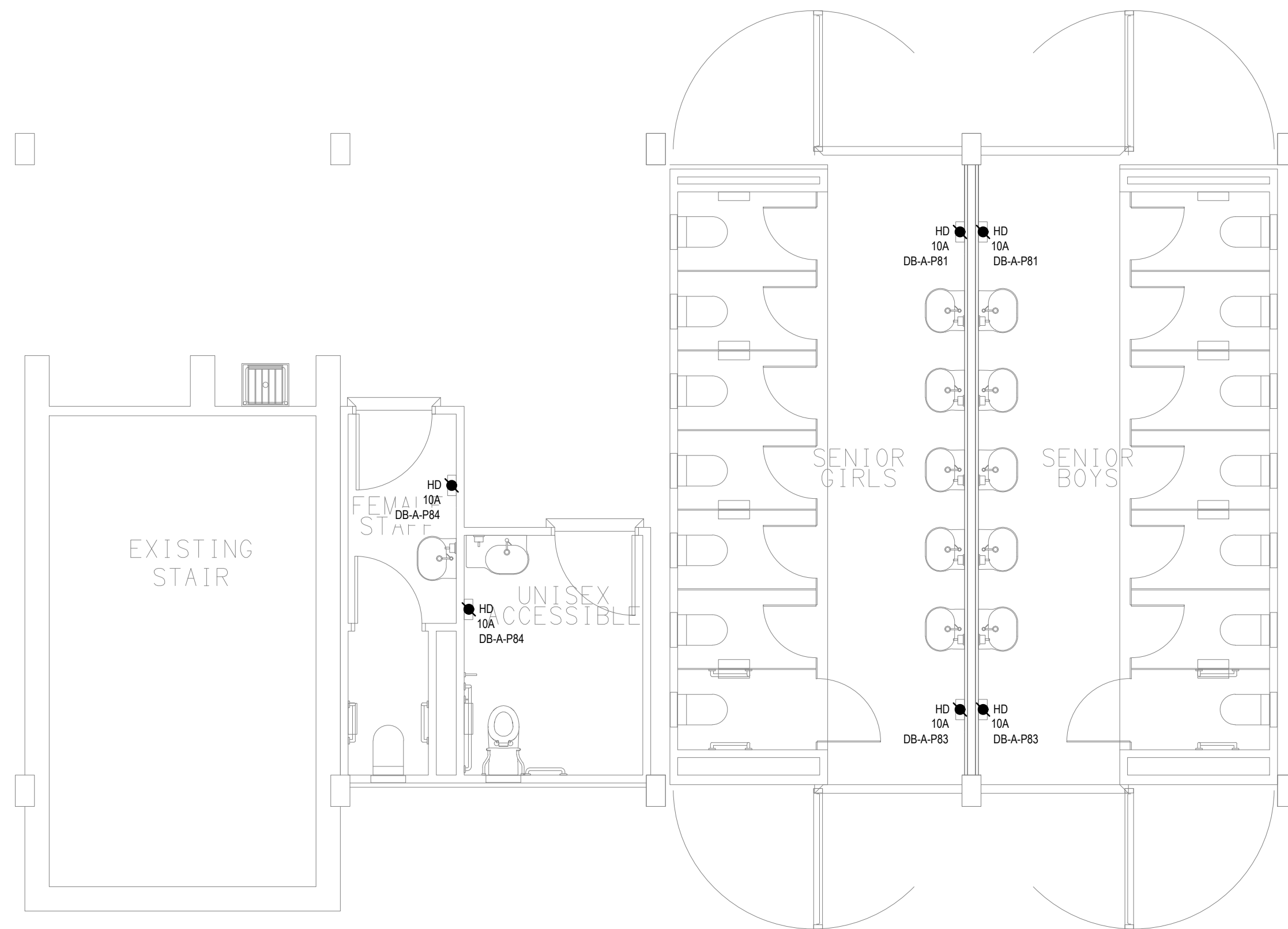
EXISTING / DEMOLITION
POWER & COMMUNICATIONS LAYOUT
SCALE 1: 50



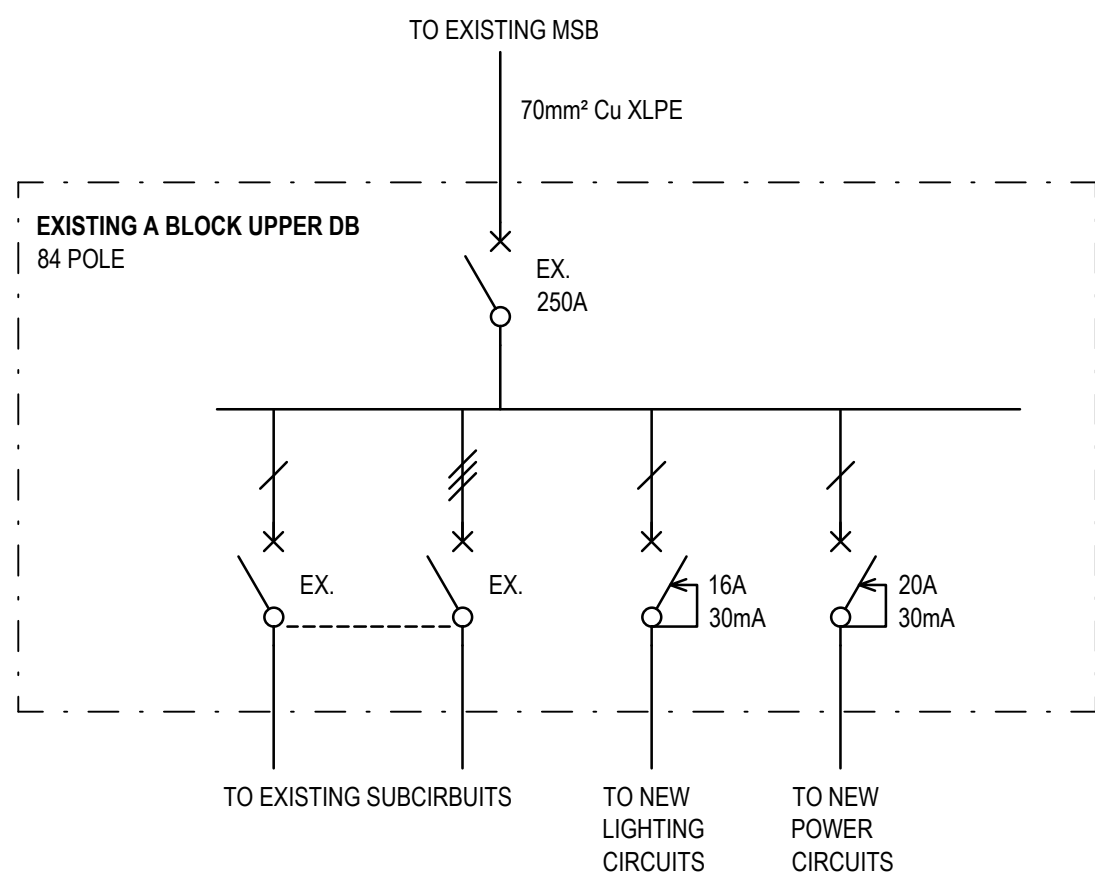
PROPOSED
POWER & COMMUNICATIONS LAYOUT JUNIOR STUDENTS
SCALE 1: 50



EXISTING / DEMOLITION
POWER & COMMUNICATIONS LAYOUT
SCALE 1: 50



PROPOSED
POWER & COMMUNICATIONS LAYOUT SENIOR STUDENTS
SCALE 1: 50

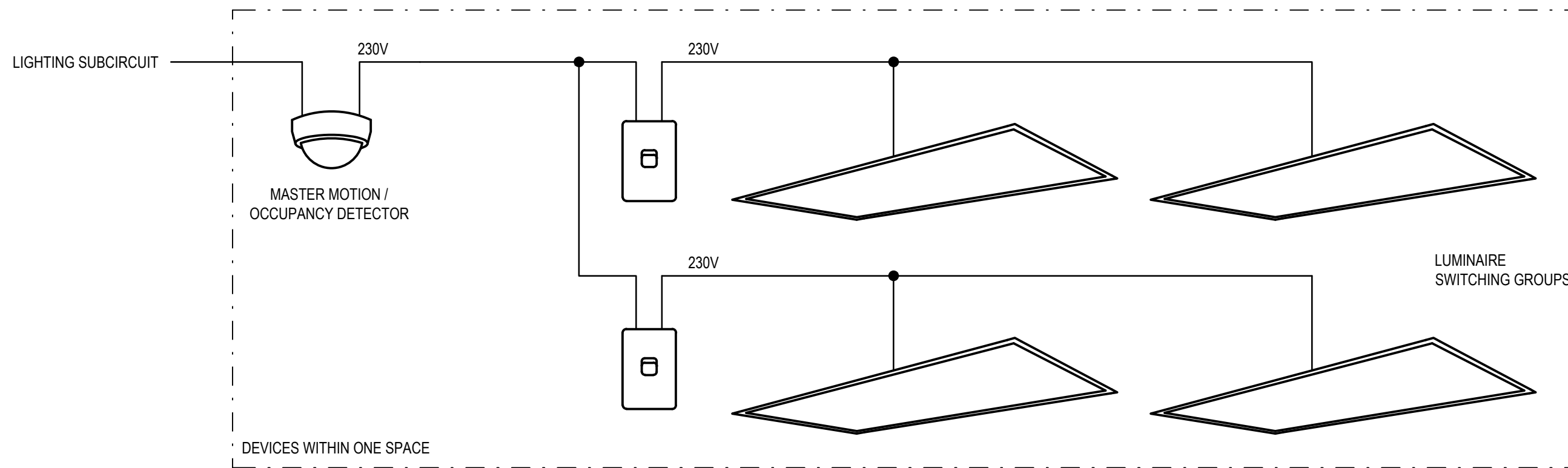


EXISTING A BLOCK UPPER DB. LOCATED IN STAFF ROOM ON UPPER LEVEL OF A BLOCK

SCALE N.T.S.

NOTES

1. SELECT CIRCUIT BREAKERS TO SUIT DISCRIMINATION AND FAULT LOOP IMPEDENCE REQUIREMENTS. ADJUST CABLE SIZES ACCORDINGLY.
2. REUSE EXISTING SUBCIRCUITS WHERE POSSIBLE. TEST SUBCIRCUIT SUITABILITY PRIOR TO REUSE. WHERE UNSUITABLE, INSTALL NEW CABLES.
3. EXISTING DB TO HOUSE EMERGENCY LIGHTING TEST SWITCH. EXISTING DB TO HAVE LABELLING AS PER APPLICABLE AS 2293



TYPICAL MOTION DETECTOR AND SWITCH SCHEMATIC

SCALE N.T.S.

NOTES

1. THIS SCHEMATIC IS HIGH LEVEL ONLY. NEUTRAL AND EARTH CONNECTIONS ARE OMITTED FOR CLARITY.
2. ALL LOCAL LIGHT SWITCHES USED IN CONJUNCTION WITH MOTION/OCCUPANCY DETECTION SHALL ONLY PROVIDE 'OVERRIDE OFF' FUNCTIONALITY.
3. THIS SCHEMATIC IS ONLY RELEVANT TO A SPACE WITH NON-DIMMABLE LUMINAIRES.
4. ONE LIGHTING SUBCIRCUIT MAY SERVE MORE THAN ONE SPACE.