



ELECTRICAL DESIGN GROUP

ELECTRICAL BUILDING SERVICES CONSULTANTS

P.O. Box 15, SHERWOOD Q. 4075

Phone: (07) 3278 4375

Website: www.edg.net.au Email: brisbane@edg.net.au

C3734a - COOMERA TAVERN

C3734a-0001(A).xls

ELECTRICAL SERVICES CONTRACT DOCUMENT SCHEDULE

REVISION A - 03 JUNE 2026

ISSUING INFORMATION				DATE OF ISSUE							
	DAY MONTH YEAR REASON FOR ISSUE	03									
		06									
		26									
		P									
A = APPROVAL C = CONSTRUCTION N = COORDINATION P = PRELIMINARY T = TENDER											

DISTRIBUTION				NUMBER OF COPIES							
WWW.EDG.NET.AU				1E							
CAYAS & WARD ARCHITECTS				1E							
P = PRINT T = TRACING D = DISC E = EMAIL F = FAX											

DOCUMENTS		REVISION									
C3734a-E01.dwg	LEGEND & DETAILS	A									
C3734a-E02.dwg	NOTES	A									
C3734a-E03.dwg	FLOOR PLAN	A									
C3734a-E04.dwg	REFLECTED CEILING PLAN	A									
C3734a-E05.dwg	JOINERY & WALL LIGHTING PLAN	A									
C3734a-E06.dwg	JOINERY & WALL LIGHTING DETAILS	A									
C3734a-0001.xls	CONTRACT DOCUMENT SCHEDULE	A									
C3734a-0002.xls	EQUIPMENT SCHEDULE	A									
C3734a-0004.xls	LIGHTING CONTROL SCHEDULE	A									
C3734a-0005.xls	DISTRIBUTION BOARD DB-A SCHEDULE	A									
C3734a-0006.xls	DISTRIBUTION BOARD DB-T2B SCHEDULE	A									
C3734a-0001.zip	FITTING & OUTLET DATASHEETS										



ELECTRICAL DESIGN GROUP

ELECTRICAL BUILDING SERVICES CONSULTANTS

P.O. Box 15, SHERWOOD Q. 4075

Phone: (07) 3278 4375 Fax: (07) 3716 0222

Web Site: www.edg.net.au Email: brisbane@edg.net.au

C3734a - COOMERA TAVERN

C3734a-0002(A).xls

ELECTRICAL EQUIPMENT SCHEDULE

REVISION A - 03 JUNE 2026

THE LIGHT FITTING SUPPLIER CONTACT DETAILS MAY BE AVAILABLE ON THE EDG WEBSITE VIA THE FOLLOWING LINK
www.edg.net.au/Links/Lighting.htm

TYPE	LAMPS	DESCRIPTION	COLOUR / ACCESSORY	CATALOGUE No	REV
S1	14.4W/M 2700K LED	LED STRIP WITHIN A SCREW FIXED EXTRUSION C/W DIFFUSER BEHIND THE MIRROR AS PER THE ARCHITECTURAL DETAIL. CONFIRM THE LENGTHS ON SITE. PROVIDE THE STRIP WITH REMOTE DALI DIMMABLE POWER SUPPLIES AS REQUIRED LOCATE THE POWER SUPPLIES IN A CONCEALED ACCESSIBLE POSITION NOTED ON THE AS CONSTRUCTED DOCUMENTS.	NATURAL	RAPID LED R2334 PLUS ALUMINIUM EXTRUSION AND POWER SUPPLY & DALI CONTROLLER	A
S2	14.4W/M 2700K LED	LED STRIP WITHIN A SCREW FIXED EXTRUSION C/W DIFFUSER WITHIN THE LOBBY PLANTER MOUNTED AS PER THE ARCHITECTURAL DETAIL. PROVIDE THE STRIP WITH REMOTE DALI DIMMABLE POWER SUPPLIES AS REQUIRED LOCATE THE POWER SUPPLIES IN A CONCEALED ACCESSIBLE POSITION NOTED ON THE AS CONSTRUCTED DOCUMENTS.	NATURAL	RAPID LED R2334 2700 K PLUS ALUMINIUM EXTRUSION OPAL DIFFUSER AND POWER SUPPLY & DALI CONTROLLER	A
S3	14.4W/M 2700K LED	MULTIPLE RUNS OF LED STRIP WITHIN A SCREW FIXED EXTRUSION C/W DIFFUSER ACROSS THE LOBBY CEILING MOUNTED AS PER THE ARCHITECTURAL DETAIL. PROVIDE THE STRIP WITH REMOTE DALI DIMMABLE POWER SUPPLIES AS REQUIRED LOCATE THE POWER SUPPLIES IN A CONCEALED ACCESSIBLE POSITION NOTED ON THE AS CONSTRUCTED DOCUMENTS.	NATURAL	RAPID LED R2334 2700 K PLUS ALUMINIUM EXTRUSION OPAL DIFFUSER AND POWER SUPPLY & DALI CONTROLLER	A
S4	14.4W/M 2700K LED	LED STRIP WITHIN A SCREW FIXED EXTRUSION C/W DIFFUSER MOUNTED WITHIN EH CEILING PELMET AS PER THE ARCHITECTURAL DETAIL. PROVIDE THE STRIP WITH REMOTE DALI DIMMABLE POWER SUPPLIES AS REQUIRED LOCATE THE POWER SUPPLIES IN A CONCEALED ACCESSIBLE POSITION NOTED ON THE AS CONSTRUCTED DOCUMENTS.	NATURAL	RAPID LED R2334 PLUS ALUMINIUM EXTRUSION AND POWER SUPPLY & DALI CONTROLLER	A
S5	14.4W/M 2700K LED	THREE RUNS OF LED STRIP WITHIN A SCREW FIXED EXTRUSION C/W DIFFUSER TO RISE VERTICALLY UP THE WALL AND THEN HORIZONTALLY ACROSS THE TOP OF THE DOOR WAY AS PER THE ELEVATION MOUNT THE LED STRIPS AS PER THE ARCHITECTURAL DETAIL. PROVIDE THE STRIP WITH REMOTE DALI DIMMABLE POWER SUPPLIES AS REQUIRED LOCATE THE POWER SUPPLIES IN A CONCEALED ACCESSIBLE POSITION NOTED ON THE AS CONSTRUCTED DOCUMENTS.	WHITE EXTRUSION	RAPID LED R2334 PLUS ALUMINIUM EXTRUSION AND POWER SUPPLY & DALI CONTROLLER	A



ELECTRICAL DESIGN GROUP

ELECTRICAL BUILDING SERVICES CONSULTANTS

P.O. Box 15, SHERWOOD Q. 4075

Phone: (07) 3278 4375 Fax: (07) 3716 0222

Web Site: www.edg.net.au Email: brisbane@edg.net.au

C3734a - COOMERA TAVERN

C3734a-0002(A).xls

ELECTRICAL EQUIPMENT SCHEDULE

REVISION A - 03 JUNE 2026

THE LIGHT FITTING SUPPLIER CONTACT DETAILS MAY BE AVAILABLE ON THE EDG WEBSITE VIA THE FOLLOWING LINK
www.edg.net.au/Links/Lighting.htm

TYPE	LAMPS	DESCRIPTION	COLOUR / ACCESSORY	CATALOGUE No	REV
S6	10W/M 2700K LED	IP67 LED FLEX SCREW FIXED RECESSED ONTO THE GAMING SCREENS AS PER THE ELEVATION. MOUNT AS PER THE ARCHITECTURAL DETAIL. PROVIDE THE STRIP WITH REMOTE DALI DIMMABLE POWER SUPPLIES AS REQUIRED LOCATE THE POWER SUPPLIES IN A CONCEALED ACCESSIBLE POSITION NOTED ON THE AS CONSTRUCTED DOCUMENTS. CONFIRM THE BEND PLANE (TOP OR SIDE) ON SITE WITH THE ARCHITECT.	WHITE	RAPID LED R2321 OR R2322 - 2700K + POWER SUPPLY & DALI CONTROLLER	A
S7	14.4W/M 2700K LED	LED STRIP WITHIN A SCREW FIXED EXTRUSION C/W DIFFUSER MOUNTED WITHIN THE BAR FRONT AS PER THE ARCHITECTURAL DETAIL. PROVIDE THE STRIP WITH REMOTE DALI DIMMABLE POWER SUPPLIES AS REQUIRED LOCATE THE POWER SUPPLIES IN A CONCEALED ACCESSIBLE POSITION NOTED ON THE AS CONSTRUCTED DOCUMENTS.	NATURAL	RAPID LED R2334 PLUS ALUMINIUM EXTRUSION AND POWER SUPPLY & DALI CONTROLLER	A
S8	14.4W/M 2700K LED	LED STRIP WITHIN A SCREW FIXED EXTRUSION C/W DIFFUSER RECESSED INTO THE HORIZONTAL WALL FEATURE AS PER THE ARCHITECTURAL DETAIL. PROVIDE THE STRIP WITH REMOTE DALI DIMMABLE POWER SUPPLIES AS REQUIRED LOCATE THE POWER SUPPLIES IN A CONCEALED ACCESSIBLE POSITION NOTED ON THE AS CONSTRUCTED DOCUMENTS.	NATURAL	RAPID LED R2334 PLUS ALUMINIUM EXTRUSION AND POWER SUPPLY & DALI CONTROLLER	A
S9	14.4W/M 2700K LED	TWO VERTICAL LED STRIPS WITHIN A SCREW FIXED EXTRUSION C/W DIFFUSER MOUNTED WITHIN THE GAMING WALL FEATURE AS PER THE ELEVATION. MOUNT AS PER THE ARCHITECTURAL DETAIL. PROVIDE THE STRIP WITH REMOTE DALI DIMMABLE POWER SUPPLIES AS REQUIRED LOCATE THE POWER SUPPLIES IN A CONCEALED ACCESSIBLE POSITION NOTED ON THE AS CONSTRUCTED DOCUMENTS.	WHITE	RAPID LED R2334 PLUS ALUMINIUM EXTRUSION AND POWER SUPPLY & DALI CONTROLLER	A
S10	14.4W/M 2700K LED	REMOVE THE EXISTING REAR JOINERY LIGHTING AND REPLACE IT WITH LED STRIP WITHIN A SCREW FIXED EXTRUSION WITHIN THE JOINERY AS PER THE ELEVATION. MOUNT AS PER THE ARCHITECTURAL DETAIL. PROVIDE THE STRIP WITH REMOTE DALI DIMMABLE POWER SUPPLIES AS REQUIRED LOCATE THE POWER SUPPLIES IN A CONCEALED ACCESSIBLE POSITION NOTED ON THE AS CONSTRUCTED DOCUMENTS.	WHITE	RAPID LED R2334 PLUS ALUMINIUM EXTRUSION AND POWER SUPPLY & DALI CONTROLLER	A



ELECTRICAL DESIGN GROUP

ELECTRICAL BUILDING SERVICES CONSULTANTS

P.O. Box 15, SHERWOOD Q. 4075

Phone: (07) 3278 4375 Fax: (07) 3716 0222

Web Site: www.edg.net.au Email: brisbane@edg.net.au

C3734a - COOMERA TAVERN

C3734a-0002(A).xls

ELECTRICAL EQUIPMENT SCHEDULE

REVISION A - 03 JUNE 2026

THE LIGHT FITTING SUPPLIER CONTACT DETAILS MAY BE AVAILABLE ON THE EDG WEBSITE VIA THE FOLLOWING LINK
www.edg.net.au/Links/Lighting.htm

TYPE	LAMPS	DESCRIPTION	COLOUR / ACCESSORY	CATALOGUE No	REV
S11	10W/M 2700K LED	IP67 LED FLEX SCREW FIXED RECESSED ONTO THE SUSPENDED GAMING CEILING FEATURE MOUNTED AS PER THE ARCHITECTURAL DETAIL. PROVIDE THE STRIP WITH REMOTE DALI DIMMABLE POWER SUPPLIES AS REQUIRED LOCATE THE POWER SUPPLIES IN A CONCEALED ACCESSIBLE POSITION NOTED ON THE AS CONSTRUCTED DOCUMENTS. CONFIRM THE BEND PLANE (TOP OR SIDE) ON SITE WITH THE ARCHITECT.	WHITE	RAPID LED R2321 OR R2322 - 2700K + POWER SUPPLY & DALI CONTROLLER	A
S12	14.4W/M 2700K LED	REMOVE THE EXISTING COUNTER FRONT LIGHTING AND REPLACE IT WITH LED STRIP WITHIN A SCREW FIXED EXTRUSION WITHIN THE JOINERY AS PER THE ELEVATION. MOUNT AS PER THE ARCHITECTURAL DETAIL. PROVIDE THE STRIP WITH REMOTE DALI DIMMABLE POWER SUPPLIES AS REQUIRED LOCATE THE POWER SUPPLIES IN A CONCEALED ACCESSIBLE POSITION NOTED ON THE AS CONSTRUCTED DOCUMENTS.	WHITE	RAPID LED R2334 PLUS ALUMINIUM EXTRUSION AND POWER SUPPLY & DALI CONTROLLER	A
S13	14.4W/M 4000K LED	LED STRIP WITHIN A SCREW FIXED EXTRUSION C/W DIFFUSER MOUNTED UNDER THE OVERHEAD CUPBOARD AGAINST THE SLASH BACK. PROVIDE THE STRIP WITH REMOTE POWER SUPPLY LOCATED IN A CONCEALED ACCESSIBLE POSITION NOTED ON THE AS CONSTRUCTED DOCUMENTS.	NATURAL	RAPID LED R2334 PLUS ALUMINIUM EXTRUSION AND POWER SUPPLY	A
S14	14.4W/M 2700K LED	LED STRIP WITHIN A SCREW FIXED EXTRUSION C/W DIFFUSER BEHIND THE MIRROR AS PER THE ARCHITECTURAL DETAIL. CONFIRM THE LENGTHS ON SITE. PROVIDE THE STRIP WITH REMOTE DALI DIMMABLE POWER SUPPLIES AS REQUIRED LOCATE THE POWER SUPPLIES IN A CONCEALED ACCESSIBLE POSITION NOTED ON THE AS CONSTRUCTED DOCUMENTS.	NATURAL	RAPID LED R2334 PLUS ALUMINIUM EXTRUSION AND POWER SUPPLY & DALI CONTROLLER	A
S15	10W/M 2700K LED	IP67 LED FLEX SCREW FIXED RECESSED ONTO THE SUSPENDED GAMING CEILING FEATURE MOUNTED AS PER THE ARCHITECTURAL DETAIL. PROVIDE THE STRIP WITH REMOTE DALI DIMMABLE POWER SUPPLIES AS REQUIRED LOCATE THE POWER SUPPLIES IN A CONCEALED ACCESSIBLE POSITION NOTED ON THE AS CONSTRUCTED DOCUMENTS. CONFIRM THE BEND PLANE (TOP OR SIDE) ON SITE WITH THE ARCHITECT.	WHITE	RAPID LED R2321 OR R2322 - 2700K + POWER SUPPLY & DALI CONTROLLER	A



ELECTRICAL DESIGN GROUP

ELECTRICAL BUILDING SERVICES CONSULTANTS

P.O. Box 15, SHERWOOD Q. 4075

Phone: (07) 3278 4375 Fax: (07) 3716 0222

Web Site: www.edg.net.au Email: brisbane@edg.net.au

C3734a - COOMERA TAVERN

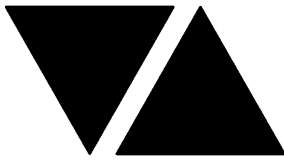
C3734a-0002(A).xls

ELECTRICAL EQUIPMENT SCHEDULE

REVISION A - 03 JUNE 2026

THE LIGHT FITTING SUPPLIER CONTACT DETAILS MAY BE AVAILABLE ON THE EDG WEBSITE VIA THE FOLLOWING LINK
www.edg.net.au/Links/Lighting.htm

TYPE	LAMPS	DESCRIPTION	COLOUR / ACCESSORY	CATALOGUE No	REV
S16	14.4W/M 2700K LED	MULTIPLE LED STRIP WITHIN A SCREW FIXED EXTRUSION C/W DIFFUSER RECESSED INTO THE REAR GAMING BAR JOINERY AS PER THE ELEVATION. MOUNT AS PER THE ARCHITECTURAL DETAIL. PROVIDE THE STRIP WITH REMOTE DALI DIMMABLE POWER SUPPLIES AS REQUIRED LOCATE THE POWER SUPPLIES IN A CONCEALED ACCESSIBLE POSITION NOTED ON THE AS CONSTRUCTED DOCUMENTS.	NATURAL	RAPID LED R2334 PLUS ALUMINIUM EXTRUSION AND POWER SUPPLY & DALI CONTROLLER	
S17	14.4W/M 2700K LED	LED STRIP WITHIN A SCREW FIXED EXTRUSION C/W DIFFUSER TO RISE VERTICALLY UP EACH SIDE AND ACROSS THE TOP OF THE CRT RECESS MOUNTED AS PER THE ARCHITECTURAL DETAIL. PROVIDE THE STRIP WITH REMOTE DALI DIMMABLE POWER SUPPLIES AS REQUIRED LOCATE THE POWER SUPPLIES IN A CONCEALED ACCESSIBLE POSITION NOTED ON THE AS CONSTRUCTED DOCUMENTS.	NATURAL	RAPID LED R2334 PLUS ALUMINIUM EXTRUSION AND POWER SUPPLY & DALI CONTROLLER	
S18	10W/M 2700K LED	IP67 LED FLEX SCREW FIXED RECESSED ONTO THE GAMING PLANTER AS PER THE ELEVATION. MOUNT AS PER THE ARCHITECTURAL DETAIL. PROVIDE THE STRIP WITH REMOTE DALI DIMMABLE POWER SUPPLIES AS REQUIRED LOCATE THE POWER SUPPLIES IN A CONCEALED ACCESSIBLE POSITION NOTED ON THE AS CONSTRUCTED DOCUMENTS. CONFIRM THE BEND PLANE (TOP OR SIDE) ON SITE WITH THE ARCHITECT.	WHITE	RAPID LED R2321 OR R2322 - 2700K + POWER SUPPLY & DALI CONTROLLER	A
PD01	2700K LED	DECORATIVE PENDANT C/W REMOTE DALI DIMMABLE DRIVER. ALLOW TO INSTALL. ALLOW A PC SUM FOR THE SUPPLY OF EACH FITTING	TBA	ALLOW A PC SUM OF \$1000.00 PLUS GST FOR THE SUPPLY OF EACH PD01 FITTING.	A
PD02	2700K LED	DECORATIVE PENDANT C/W REMOTE DALI DIMMABLE DRIVER. ALLOW TO INSTALL. ALLOW A PC SUM FOR THE SUPPLY OF EACH FITTING	TBA	ALLOW A PC SUM OF \$1000.00 PLUS GST FOR THE SUPPLY OF EACH PD02 FITTING.	A
PD03	2700K LED	DECORATIVE PENDANT C/W REMOTE DALI DIMMABLE DRIVER. ALLOW TO INSTALL. ALLOW A PC SUM FOR THE SUPPLY OF EACH FITTING	TBA	ALLOW A PC SUM OF \$1000.00 PLUS GST FOR THE SUPPLY OF EACH PD03 FITTING.	A
PD04	2700K LED	DECORATIVE PENDANT C/W REMOTE DALI DIMMABLE DRIVER. ALLOW TO INSTALL. ALLOW A PC SUM FOR THE SUPPLY OF EACH FITTING	TBA	ALLOW A PC SUM OF \$1000.00 PLUS GST FOR THE SUPPLY OF EACH PD043 FITTING.	A



ELECTRICAL DESIGN GROUP

ELECTRICAL BUILDING SERVICES CONSULTANTS

P.O. Box 15, SHERWOOD Q. 4075

Phone: (07) 3278 4375 Fax: (07) 3716 0222

Web Site: www.edg.net.au Email: brisbane@edg.net.au

C3734a - COOMERA TAVERN

C3734a-0002(A).xls

ELECTRICAL EQUIPMENT SCHEDULE

REVISION A - 03 JUNE 2026

THE LIGHT FITTING SUPPLIER CONTACT DETAILS MAY BE AVAILABLE ON THE EDG WEBSITE VIA THE FOLLOWING LINK
www.edg.net.au/Links/Lighting.htm

TYPE	LAMPS	DESCRIPTION	COLOUR / ACCESSORY	CATALOGUE No	REV
PD05	2700K LED	DECORATIVE PENDANT C/W REMOTE DALI DIMMABLE DRIVER. ALLOW TO INSTALL. ALLOW A PC SUM FOR THE SUPPLY OF EACH FITTING	TBA	ALLOW A PC SUM OF \$1000.00 PLUS GST FOR THE SUPPLY OF EACH PD05 FITTING.	A
PD06	2700K LED	DECORATIVE PENDANT C/W REMOTE DALI DIMMABLE DRIVER. ALLOW TO INSTALL. ALLOW A PC SUM FOR THE SUPPLY OF EACH FITTING	TBA	ALLOW A PC SUM OF \$1000.00 PLUS GST FOR THE SUPPLY OF EACH PD06 FITTING.	A
PD07	2700K LED	DECORATIVE PENDANT C/W REMOTE DALI DIMMABLE DRIVER. ALLOW TO INSTALL. ALLOW A PC SUM FOR THE SUPPLY OF EACH FITTING	TBA	ALLOW A PC SUM OF \$2000.00 PLUS GST FOR THE SUPPLY OF EACH PD07 FITTING.	A
WL01	2 X TRAILING EDGE DIMMABLE 240 VOLT 2200K E14 LED 200 LUMENS +/- 10% 15,000 HOUR LIFE LAMP	DECORATIVE 440 HIGH WALL LIGHT MOUNTED AS PER THE ARCHITECTURAL DETAILS	ANTIQUE BRASS	TEMPLE & WEBSTER LUCCA IRON UP/DOWN WALL LIGHT CLAL3461	A
RD01	15W 3000K LED	90 DIA RECESSED DOWNLIGHT C/W 24 DEG BEAM REMOTE DALI DIMMABLE DRIVER	BLACK	RAPID R1078-WH-15W-WW-DALI	A
RD02	15W 3000K LED	75 DIA RECESSED ADJUSTABLE DOWNLIGHT C/W REMOTE DALI DIMMABLE DRIVER	BLACK	RAPID R1077-WH-15W-WW-DALI	A
RD03	PROVIDE THE RD03 AS A RECESSED DOWNLIGHT THAT MATCHES THE EXISTING ADJACENT RDE FITTING. CIRCUIT AND CONTROL THE NEW RD03 FITTINGS WITH THE EXISTING ADJACENT RDE FITTING.				A
RD04	18W 3000K LED	150 DIA IP54 RECESSED DOWNLIGHT C/W 24 DEG BEAM REMOTE DALI DIMMABLE DRIVER	WHITE	RAPID R1093-18-WH-SIL-TRI DALI	A
RDE	EXISTING RECESSED DOWNLIGHT TO BE RETAINED AS IS				A
SLE	EXISTING SURFACE 1200 LONG BATTEN TO BE RETAINED				A
FS01	1W LED AT 500 CENTRES	4V DC IP65 FESTOON LIGHTING TO BE FIXED TO A 316 STAINLESS STEEL WIRE SUPPORT SYSTEM. SUPPLY THE FESTOON LIGHTS VIA REMOTE DALI DIMMABLE DRIVERS IN A CONCEALED ACCESSIBLE POSITIONS NOTED ON THE AS CONSTRUCTED DOCUMENTS. CONFIRM THE LENGTH AND POSITION ON SITE	BLACK CABLE AND FIXINGS 316 STAINLESS STEEL SUPPORT AND FIXINGS	FIRE FLY FFC-LS-50-24VE27-BK	A

C3734a-0002(A).xls

Pages inc. any attach. 5 of 7



ELECTRICAL DESIGN GROUP

ELECTRICAL BUILDING SERVICES CONSULTANTS

P.O. Box 15, SHERWOOD Q. 4075

Phone: (07) 3278 4375 Fax: (07) 3716 0222

Web Site: www.edg.net.au Email: brisbane@edg.net.au

C3734a - COOMERA TAVERN

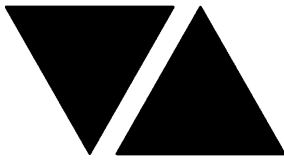
C3734a-0002(A).xls

ELECTRICAL EQUIPMENT SCHEDULE

REVISION A - 03 JUNE 2026

THE LIGHT FITTING SUPPLIER CONTACT DETAILS MAY BE AVAILABLE ON THE EDG WEBSITE VIA THE FOLLOWING LINK
www.edg.net.au/Links/Lighting.htm

TYPE	LAMPS	DESCRIPTION	COLOUR / ACCESSORY	CATALOGUE No	REV
HRE		EXISTING HEATERS TO BE RETAINED AND THE CONTROLS REINSTATED AS NECESSARY TO ACCOMMODATE THE NEW LAYOUT.			A
E1	LED	EMERGENCY LIGHT: RECESSED NON-MAINTAINED EMERGENCY LIGHT. AS2293 CLASSIFICATION C0-D40 - C90-D40.	WHITE	CLEVERTRONICS CLIFE	B
E2	LED	EMERGENCY LIGHT: RECESSED NON-MAINTAINED EMERGENCY LIGHT. AS2293 CLASSIFICATION C0-D40 - C90-D40.	BLACK	CLEVERTRONICS CLIFE-BLK	B
EX	LED	EXIT LIGHT THEATRE MASK: MAINTAINED 24M VIEWING DISTANCE EXIT LIGHT C/W DIFFUSERS & DIRECTIONAL ARROWS AS SHOWN. CEILING OR WALL MOUNT BETWEEN 2100mm & 2700mm AFFL IF THERE IS NO VERTICAL SURFACE TO MOUNT THE FITTING ON WITHIN THIS RANGE CONFIRM THE MOUNTING HEIGHT WITH THE ENGINEER. LITHIUM ION BATTERY	WHITE	CLEVERTRONICS LSBLED	B
EX BK	LED	EXIT LIGHT THEATRE MASK: MAINTAINED 24M VIEWING DISTANCE EXIT LIGHT C/W DIFFUSERS & DIRECTIONAL ARROWS AS SHOWN. CEILING OR WALL MOUNT BETWEEN 2100mm & 2700mm AFFL IF THERE IS NO VERTICAL SURFACE TO MOUNT THE FITTING ON WITHIN THIS RANGE CONFIRM THE MOUNTING HEIGHT WITH THE ENGINEER. LITHIUM ION BATTERY	BLACK	CLEVERTRONICS LSBLED-BLK	B
CHANNEL x		CONTROL CHANNEL WITH A NUMERICAL REFERENCE. REFER TO THE POWER AND LIGHTING CONTROL SCHEDULE			A
LIGHTING CONTROL SWITCH PANEL 1 (SP1)		PROGRAMMABLE SWITCH PANEL C/W CENTRAL LCD DISPLAY MOUNTED AT 1000mm AFFL UNLESS NOTED OTHERWISE. BLANK OFF / REMOVE THE EXISTING ADJACENT MANUAL LIGHTING CONTROLS THAT BECOME REDUNDANT.	WHITE	ZEN CONTROL SSD	A
LIGHTING CONTROL SWITCH PANEL 2 (SP2)		PROGRAMMABLE SWITCH PANEL C/W CENTRAL LCD DISPLAY MOUNTED AT 1000mm AFFL UNLESS NOTED OTHERWISE. BLANK OFF / REMOVE THE EXISTING ADJACENT MANUAL LIGHTING CONTROLS THAT BECOME REDUNDANT.	WHITE	ZEN CONTROL SSD	A
LIGHTING CONTROL SWITCH PANEL 3 (SP3)		PROGRAMMABLE SWITCH PANEL C/W CENTRAL LCD DISPLAY MOUNTED AT 1000mm AFFL UNLESS NOTED OTHERWISE. BLANK OFF / REMOVE THE EXISTING ADJACENT MANUAL LIGHTING CONTROLS THAT BECOME REDUNDANT.	WHITE	ZEN CONTROL SSD	A



ELECTRICAL DESIGN GROUP

ELECTRICAL BUILDING SERVICES CONSULTANTS

P.O. Box 15, SHERWOOD Q. 4075

Phone: (07) 3278 4375 Fax: (07) 3716 0222

Web Site: www.edg.net.au Email: brisbane@edg.net.au

C3734a - COOMERA TAVERN

C3734a-0002(A).xls

ELECTRICAL EQUIPMENT SCHEDULE

REVISION A - 03 JUNE 2026

THE LIGHT FITTING SUPPLIER CONTACT DETAILS MAY BE AVAILABLE ON THE EDG WEBSITE VIA THE FOLLOWING LINK
www.edg.net.au/Links/Lighting.htm

TYPE	LAMPS	DESCRIPTION	COLOUR / ACCESSORY	CATALOGUE No	REV
ONE-WAY SWITCH		ONE-WAY SWITCH C/W CIRCUIT IDENTIFICATION ON THE FACEPLATE BEHIND THE SURROUND MOUNTED AT 1000mm AFFL UNLESS NOTED OTHERWISE.	WHITE UNLESS NOTED AS BK (BLACK)	CLIPSAL C2000 SERIES FACEPLATE	A
TWO-WAY SWITCH		TWO-WAY SWITCH C/W CIRCUIT IDENTIFICATION ON THE FACEPLATE BEHIND THE SURROUND MOUNTED AT 1000mm AFFL UNLESS NOTED OTHERWISE.	WHITE UNLESS NOTED AS BK (BLACK)	CLIPSAL C2000 SERIES FACEPLATE	A
SINGLE POWER OUTLET		SINGLE POWER OUTLET C/W CIRCUIT IDENTIFICATION ON THE FACEPLATE BEHIND THE SURROUND MOUNT AT 300mm AFFL U.N.O. RATING 10A U.N.O.	WHITE UNLESS NOTED AS BLACK (BK)	CLIPSAL C2000 SERIES	A
AUTO DOOR SINGLE POWER OUTLET (AD)		SINGLE POWER OUTLET C/W CIRCUIT IDENTIFICATION LOCATED CONCEALED WITHIN THE AUTO DOOR HEAD MULLION RATING 10A U.N.O.	WHITE	CLIPSAL C2000 SERIES	A
DOUBLE POWER OUTLET		DOUBLE POWER OUTLET C/W CIRCUIT IDENTIFICATION ON THE FACEPLATE BEHIND THE SURROUND MOUNT AT 300mm AFFL U.N.O. RATING 10A U.N.O.	WHITE UNLESS NOTED AS BLACK (BK)	CLIPSAL C2000 SERIES	A
DOUBLE POWER OUTLET C/W USB		DOUBLE POWER OUTLET C/W USB A AND USB C CHARGER , CIRCUIT IDENTIFICATION ON THE FACEPLATE BEHIND THE SURROUND. MOUNT ABOVE BENCH	WHITE	CLIPSAL C2000 SERIES	
SIGN CONNECTION		COORDINATE THE LOCATION AND CONNECTION WITH THE SIGN CONTRACTOR ENSURING THE CONNECTION ARE PROVIDED WITH APPROPRIATE WEATHER PROTECTION AND ARE CONCEALED FROM VIEW.			A
DB-T2A		EXISTING DISTRIBUTION BOARD DB-T2A INTEGRAL TO THE MSB. REPLACE THE THREE PHASE MCBS AND THE ASSOCIATED 3 POLE RCD UNITS WITH 3 POLE RCBS. ANY EXISTING CIRCUITS AND ASSOCIATED SWITCHGEAR THAT BECOMES REDUNDANT DUE TO THE WORKS ARE TO BE REMOVED. PROVIDE DB-T2A WITH A THREE PHASE 63A MCB TO SUPPLY DB-A. UPDATE THE SCHEDULE AT PRACTICAL COMPLETION.			A
DB-T2B		EXISTING DISTRIBUTION BOARD TO BE PROVIDED WITH NEW SWITCHGEAR TO ACCOMMODATE THE NEW CIRCUITS AS NOTED IN THE DISTRIBUTION BOARD DB-T2B SCHEDULE. REPLACE THE TWO THREE PHASE MCBS AND THE ASSOCIATED 3 POLE RCD UNITS WITH 3 POLE RCBS. ANY EXISTING CIRCUITS AND ASSOCIATED SWITCHGEAR THAT BECOMES REDUNDANT DUE TO THE WORKS ARE TO BE REMOVED. UPDATE THE SCHEDULE AT PRACTICAL COMPLETION.			A
DB-A		WALL MOUNTED DISTRIBUTION BOARD DB-A REFER TO THE NOTES AND DISTRIBUTION BOARD DB-A SCHEDULE FOR ADDITIONAL INFORMATION AND REQUIREMENTS. PROVIDE DB-A WITH A 4C+E 25mm SUBMAIN FROM THE MSB. PROVIDE A SHOP DRAWING OF THE DB FOR APPROVAL.			A
GAMING DB		GAMING DISTRIBUTION BOARD AND ITS ASSOCIATED SUBMAIN TO BE PROVIDED BY THE GAMING ELECTRICIAN.			A
MSB		EXISTING MAIN SWITCHBOARD TO REMAIN.			A

C3734a-0002(A).xls

Pages inc. any attach. 7 of 7



ELECTRICAL DESIGN GROUP

ELECTRICAL BUILDING SERVICES CONSULTANTS

P.O. Box 15, SHERWOOD Q. 4075

Phone: (07) 3278 4375 Fax: (07) 3716 0222

Web Site: www.edg.net.au Email: brisbane@edg.net.au

C3734a - COOMERA TAVERN
LIGHTING CONTROL SCHEDULE
REVISION A - 03 JUNE 2026

C3734a-0004(A).xls

MISCELLANEOUS EQUIPMENT			REV
ITEM	DESCRIPTION		A
SP1	WALL MOUNTED WHITE ZENCONTROL SSD MOUNTED AT 1000 AFFL CONFIGURE THE CONTROLS AS PER THE NOTES		A
SP2	WALL MOUNTED WHITE ZENCONTROL SSD MOUNTED AT 1000 AFFL CONFIGURE THE CONTROLS AS PER THE NOTES		A
SP3	WALL MOUNTED WHITE ZENCONTROL SSD MOUNTED AT 1000 AFFL CONFIGURE THE CONTROLS AS PER THE NOTES		A
CONTROL MODULE 1			A
TYPE:		ZENCONTROL ZC-CONTROLLER-PRO-3	A
DESCRIPTION		3 LINE DALI APPLICATION CONTROLLER	A
LOCATION		DIN RAIL MOUNTED WITHIN DB-A	A
CHANNEL	CONTROL	CIRCUIT	A
A1	DALI DIM	DB-A - L1 AND L2	A
A2	DALI DIM	DB-A - L3 AND L4	A
A3	DALI DIM	DB-A - L5 AND L6	A
CONTROL MODULE 2			A
TYPE:		ZENCONTROL ZC-PSU	A
DESCRIPTION		DALI POWER SUPPLY	A
LOCATION		DIN RAIL MOUNTED WITHIN DB-A	A
CONTROL MODULE 3			A
TYPE:		ZENCONTROL ZC-PSU	A
DESCRIPTION		DALI POWER SUPPLY	A
LOCATION		DIN RAIL MOUNTED WITHIN DB-A	A
CONTROL MODULE 4			A
TYPE:		ZENCONTROL ZC-PSU	A
DESCRIPTION		DALI POWER SUPPLY	A
LOCATION		DIN RAIL MOUNTED WITHIN DB-A	A
CONTROL MODULE 5			A
TYPE:		ZENCONTROL ZC-CONTROLLER-PRO-3	A
DESCRIPTION		3 LINE DALI APPLICATION CONTROLLER	A
LOCATION		DIN RAIL MOUNTED WITHIN DB-A	A
BUS:		A	A
CHANNEL	CONTROL	CIRCUIT	A
A4	DALI DIM	DB-A - L7 AND L8	A
A5			A
A6			A
CONTROL MODULE 6			A
TYPE:		ZENCONTROL ZC-PSU	A
DESCRIPTION		DALI POWER SUPPLY	A
LOCATION		DIN RAIL MOUNTED WITHIN DB-A	A



ELECTRICAL DESIGN GROUP

ELECTRICAL BUILDING SERVICES CONSULTANTS

P.O. Box 15, SHERWOOD Q. 4075

Phone: (07) 3278 4375 Fax: (07) 3716 0222

Web Site: www.edg.net.au Email: brisbane@edg.net.au

C3734a - COOMERA TAVERN
LIGHTING CONTROL SCHEDULE
REVISION A - 03 JUNE 2026

C3734a-0004(A).xls

CONTROL MODULE 7				A
TYPE:		ZENCONTROL 4 CHANNEL DALI RELAY CONTROLLER		A
DESCRIPTION		4 CHANNEL DALI RELAY CONTROLLER		A
LOCATION		DIN RAIL MOUNTED WITHIN DB-A		A
CHANNEL	CONTROL	CIRCUIT		A
A7	SWITCH	DB-A - L9		A
A8				A
A9				A
A10				A
CONTROL MODULE 8				A
TYPE:		LUMILINK LL-D2PH-4C-DIN		A
DESCRIPTION		4 CHANNEL DALI TRAILING EDGE PHASE DIMMER		A
LOCATION		DIN RAIL MOUNTED WITHIN DB-A		A
CHANNEL	CONTROL	CIRCUIT		A
A11	TE DIM	DB-A - L9		A
A12				A
A13				A
A14				A
CONTROL MODULE 9				A
TYPE:		ZENCONTROL ZC-CONTROLLER-PRO-3		A
DESCRIPTION		3 LINE DALI APPLICATION CONTROLLER		A
LOCATION		DIN RAIL MOUNTED WITHIN AN ENCLOSURE ADJACENT DB-TCB		A
CHANNEL	CONTROL	CIRCUIT		A
B1	DALI DIM	DB-T2B - L1, L2 AND L3		A
B2	DALI DIM			A
B3	DALI DIM			A
CONTROL MODULE 10				A
TYPE:		ZENCONTROL ZC-PSU		A
DESCRIPTION		DALI POWER SUPPLY		A
LOCATION		DIN RAIL MOUNTED WITHIN AN ENCLOSURE ADJACENT DB-TCB		A



ELECTRICAL DESIGN GROUP

ELECTRICAL BUILDING SERVICES CONSULTANTS

P.O. Box 15, SHERWOOD Q. 4075

Phone: (07) 3278 4375

Website: www.edg.net.au Email: brisbane@edg.net.au

C3734a - COOMERA TAVERN

C3734a-0005(A).xls

DISTRIBUTION BOARD DB-A

REVISION A - 03 JUNE 2026

<div>FAULT CURRENT: 6kA UTILISING CASCADING</div> <div>CHASSIS SIZE: 36 POLES</div> <div>CHASSIS RATING: 250A</div> <div>PHASES: 3</div> <div>MAIN SWITCH: 160A NON AUTO LOAD BREAK SWITCH</div> <div>SUPPLIED FROM: MSB</div> <div>SUPPLY CABLE: 4C+E 25</div>							REV
							A
							A
							A
							A
PROVIDE THE DB WITH A FULL WIDTH EMPTY DIN RAIL TO ACCOMMODATE FUTURE CONTACTORS AND CONTROLS IN ADDITION TO THE INITIAL CONTROL EQUIPMENT. PROVIDE THE DB WITH AN AS2293 EMERGENCY LIGHTING CONTROL SYSTEM TO CONTROL THE ASSOCIATED EMERGENCY LIGHTS. PROVIDE THE DB WITH SURGE PROTECTION. PROVIDE A SHOP DRAWING INCLUDING THE LIGHTING CONTROL EQUIPMENT.							A
CIRC	PH	CIRCUIT BREAKER (amps)	CONTROL EQUIPMENT	CABLE SIZE (mm2)	LOCATION	CIRCUIT USE	
P1	1	20	RCBO	2.5		PRINTER	A
P2	1	20	RCBO	2.5		DESK	A
P3	1	20	RCBO	2.5		TV	A
P4	1	20	RCBO	2.5		CLEANING	A
P5	1	20	RCBO	2.5		AUTO DOOR	A
P6	1	20	RCBO	2.5		SIMTEC	A
P7	1	20	RCBO	2.5		SIMTEC	A
P8	1	20	RCBO	2.5		SIMTEC	A
P9	1	20	RCBO	2.5		SIMTEC	A
P10	1	20	RCBO	2.5		SIMTEC	A
L1	1	20	RCBO	2.5		LIGHTING	A
L2	1	20	RCBO	2.5		LIGHTING	A
L3	1	20	RCBO	2.5		LIGHTING	A
L4	1	20	RCBO	2.5		LIGHTING	A
L5	1	20	RCBO	2.5		LIGHTING	A
L6	1	20	RCBO	2.5		LIGHTING	A
L7	1	20	RCBO	2.5		LIGHTING	A
L8	1	20	RCBO	2.5		LIGHTING	A
L9	1	20	RCBO	2.5		SIGN	A



ELECTRICAL DESIGN GROUP

ELECTRICAL BUILDING SERVICES CONSULTANTS

P.O. Box 15, SHERWOOD Q. 4075

Phone: (07) 3278 4375

Website: www.edg.net.au Email: brisbane@edg.net.au

C3734a - COOMERA TAVERN
DISTRIBUTION BOARD DB-T2B
REVISION A - 03 JUNE 2026

C3734a-0006(A).xls

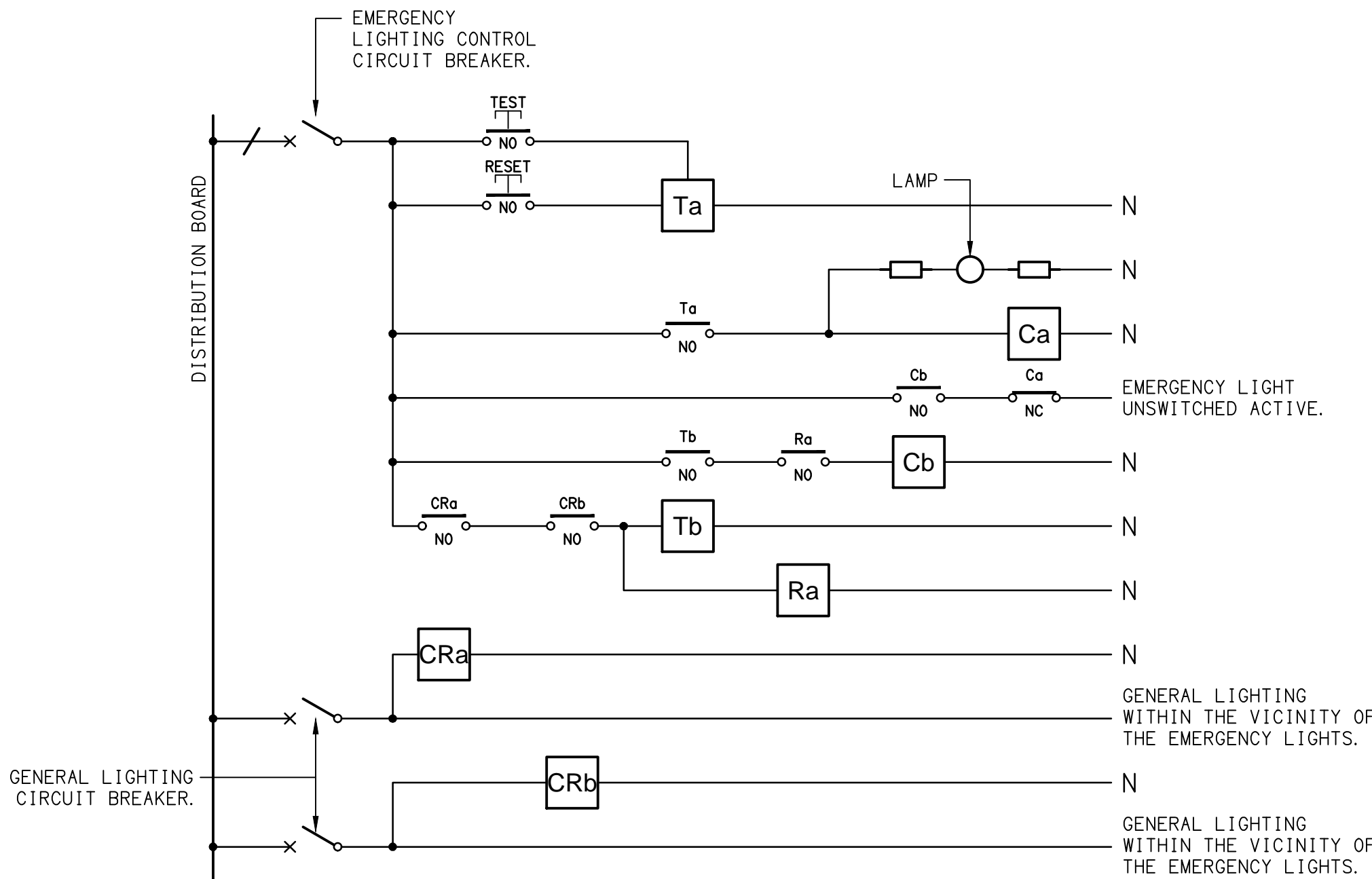
							REV
EXISTING DISTRIBUTION BOARD TO BE PROVIDED WITH NEW SWITCHGEAR TO ACCOMMODATE THE FOLLOWING NEW CIRCUITS. REPLACE THE TWO THREE PHASE MCBS AND THE ASSOCIATED 3 POLE RCD UNITS WITH 3 POLE RCBOs. ANY EXISTING CIRCUITS AND ASSOCIATED SWITCHGEAR THAT BECOMES REDUNDANT DUE TO THE WORKS ARE TO BE REMOVED. UPDATE THE SCHEDULE AT PRACTICAL COMPLETION.							A
CIRC	PH	CIRCUIT BREAKER (amps)	CONTROL EQUIPMENT	CABLE SIZE (mm ²)	LOCATION	CIRCUIT USE	
P1	1	20	RCBO	2.5		TV	A
L1	1	20	RCBO	2.5		LIGHTING	A
L2	1	20	RCBO	2.5		LIGHTING	A
L3	1	20	RCBO	2.5		LIGHTING	A

LEGEND

	ELECTRICAL SERVICES SWITCHBOARD.
	SWITCHBOARD / CONTROL PANEL NOT PROVIDED AS PART OF THE ELECTRICAL SUBCONTRACT.
	SINGLE POWER OUTLET.
	DOUBLE POWER OUTLET.
USB	DOUBLE POWER OUTLET, C/W INTEGRAL USB.
	SPECIAL PURPOSE OUTLET.
	ELECTRICAL CONNECTION AS NOTED.
	SIGNAGE CONNECTION.
	LIGHTING CONTROL SWITCHPANEL, TYPE x.
	ONE-WAY LIGHT SWITCH.
	TWO-WAY LIGHT SWITCH.
	CIRCUIT LINE.
	SWITCH LINE.
	POWER CIRCUIT DESIGNATION. DENOTES DB AND CIRCUIT.
	LIGHTING CONTROL CHANNEL REFERENCE.
	ELECTRICAL EQUIPMENT AS NOTED.
	REFER TO DETAIL NOTED FOR THE AREA SHOWN HATCHED. ADDITIONAL OUTLETS & FITTINGS MAY BE SHOWN ON DETAIL.
	Sx: LED JOINERY / CEILING STRIP LIGHT, TYPE AS NOTED.
	E1: GENERAL CEILING RECESSED LED EMERGENCY LIGHT, WHITE.
	E2: GENERAL CEILING RECESSED LED EMERGENCY LIGHT, BLACK.
	EX: EMERGENCY LED EXIT LIGHT, WHITE.
BK	EX BK: EMERGENCY LED EXIT LIGHT, BLACK.
	PD01: DECORATIVE SUSPENDED PENDANT.
	PD02: DECORATIVE SUSPENDED PENDANT.
	PD03: DECORATIVE SUSPENDED PENDANT.
	PD04: DECORATIVE SUSPENDED PENDANT.
	PD05: DECORATIVE SUSPENDED PENDANT.
	PD06: DECORATIVE SUSPENDED PENDANT.
	PD07: DECORATIVE SUSPENDED PENDANT.
	WL01: DECORATIVE WALL LIGHT, BRASS.
	RD01: RECESSED DOWNLIGHT, BLACK.
	RD02: RECESSED ADJUSTABLE DOWNLIGHT, BLACK.
	RD03: RECESSED DOWNLIGHT TO MATCH EXISTING RDE FITTING.
	RD04: RECESSED DOWNLIGHT, WHITE.
	RDE: EXISTING RECESSED DOWNLIGHT TO BE RETAINED.
	SLE: EXISTING SURFACE BATTEN LIGHT TO BE RETAINED.
	FS01: FESTOON LIGHTING ON STAINLESS STEEL CABLE SUPPORT.
	HRE: EXISTING HEATER TO BE RETAINED.

EQUIPMENT:

TEST - TEST PUSH BUTTON MOUNTED ON THE DISTRIBUTION BOARD ESCUTCHEON.
RESET - RESET PUSH BUTTON MOUNTED ON THE DISTRIBUTION BOARD ESCUTCHEON.
LAMP - AMBER TEST INDICATING LAMP MOUNTED ON THE DISTRIBUTION BOARD ESCUTCHEON.
Ta - ADJUSTABLE 0-3 HOUR TIMED RELAY.
Tb - 15 MINUTE RUN-ON TIMER TO OPERATE UPON THE RETURN OF MAINS POWER.
Cx - CONTACTOR x.
CRx - CONTROL RELAY x.
Rx - RELAY x.

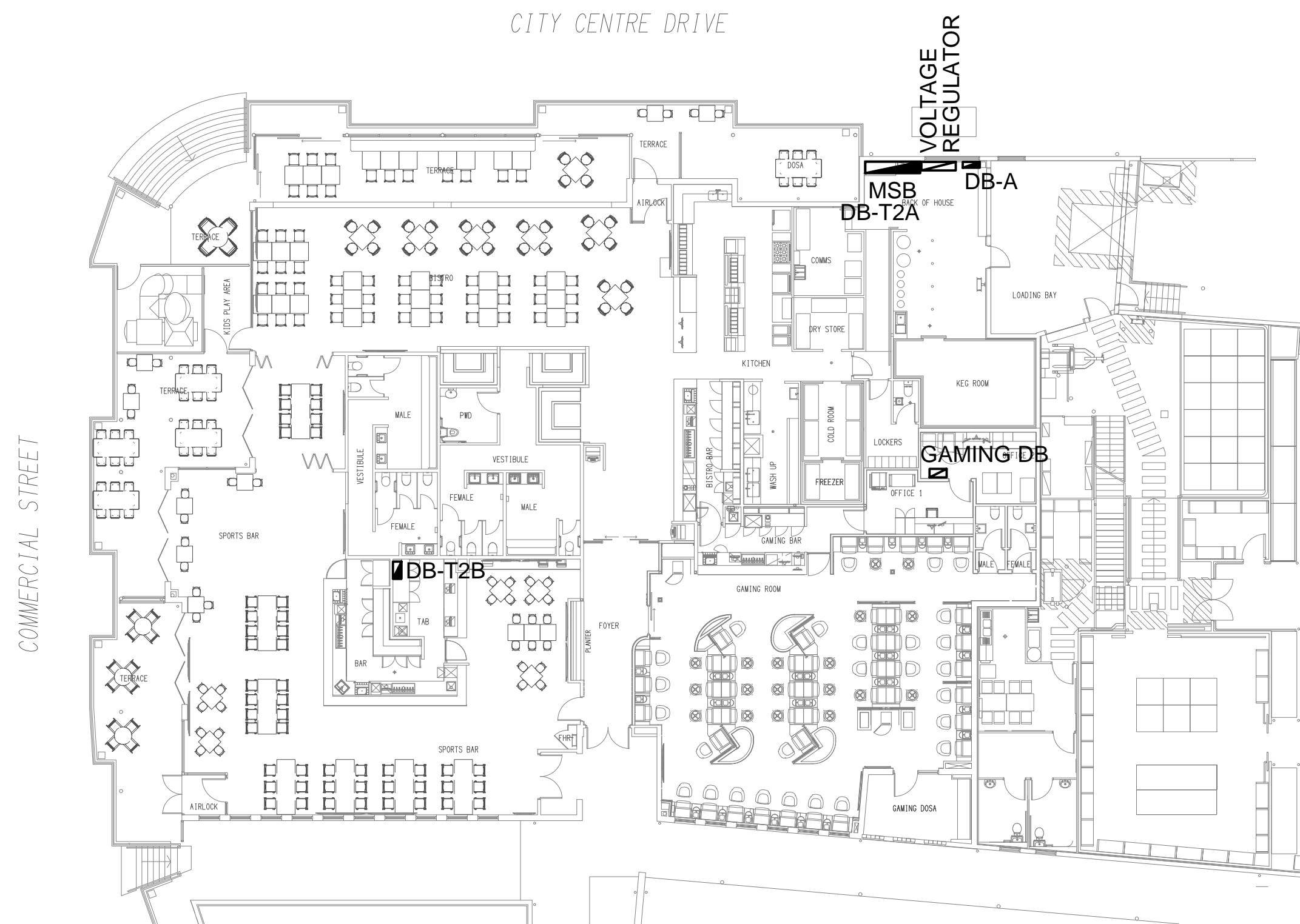


NOTES

- THE EMERGENCY LIGHT UNSWITCHED ACTIVE / GENERAL LIGHTING SWITCHED ACTIVE CIRCUIT ARRANGEMENT AND CONTROL IS TYPICAL FOR ALL CIRCUITS SUPPLYING EMERGENCY LIGHTS.
- PROVIDE ADDITIONAL CONTROL RELAYS (CRx) CONFIGURED AS PER CRa AND CRb FOR ALL ADDITIONAL LIGHTING CIRCUITS THAT SUPPLY LIGHTS IN THE VICINITY OF THE EMERGENCY LIGHTS.

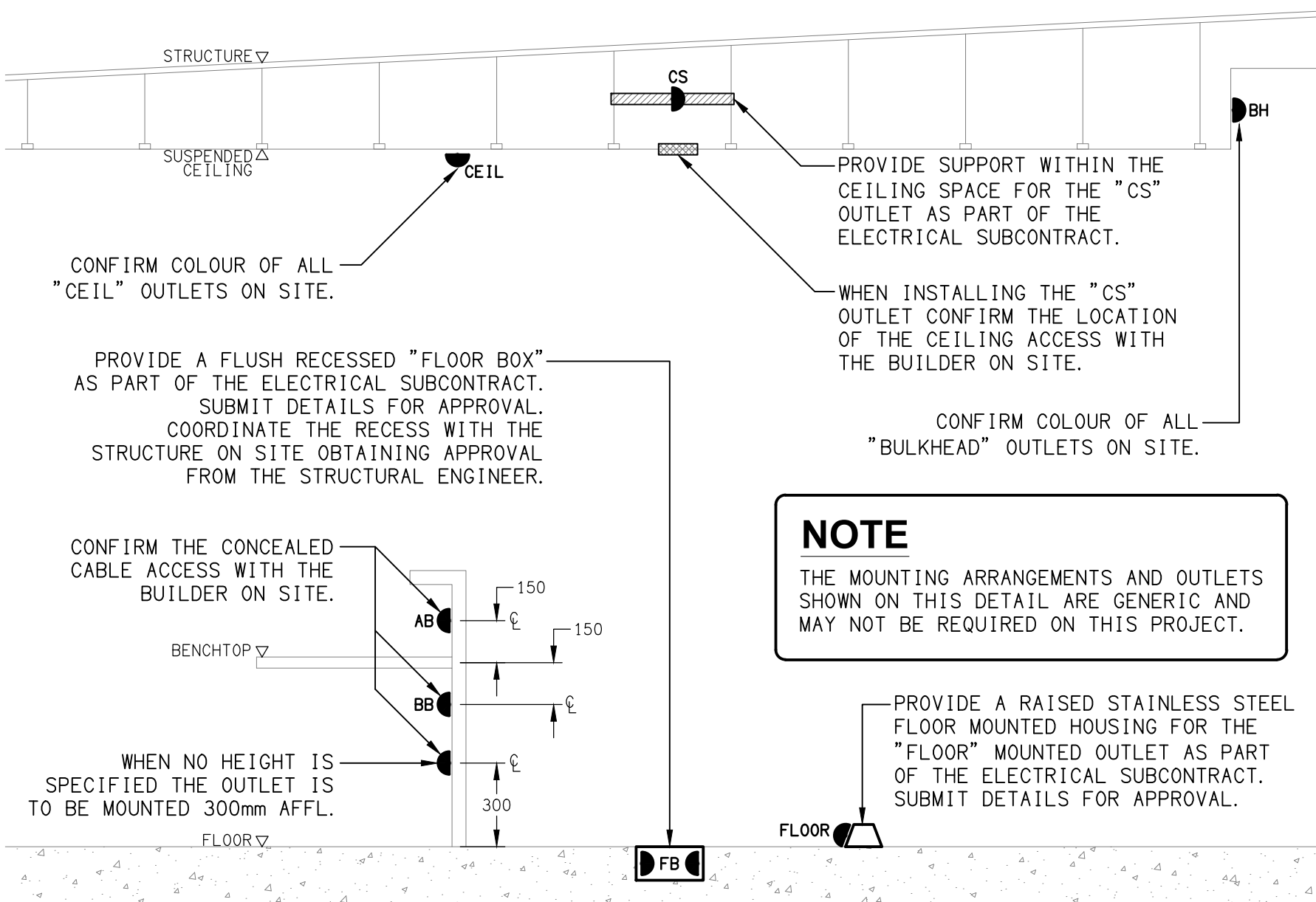
SCHEMATIC

EMERGENCY LIGHTING
NOT TO SCALE



SITE PLAN

ELECTRICAL SWITCHBOARD LOCATIONS
SCALE 1:200



DETAIL

TYPICAL OUTLET MOUNTINGS
NOT TO SCALE

<div>ELECTRICAL DESIGN GROUP BRISBANE PTY LTD ACN 092 710 793</div> <div>TRADING AS: ELECTRICAL DESIGN GROUP</div>	<div>THE COPYRIGHT OF THIS DRAWING REMAINS THE PROPERTY OF THE ELECTRICAL DESIGN GROUP.</div>	<div>ELECTRICAL DESIGN GROUP ELECTRICAL BUILDING SERVICES CONSULTANTS BRISBANE GOLD COAST</div> <div>P.O.Box 15, Sherwood Q.4075 Phone: (07) 3278 4375 Email: brisbane@edg.net.au Web: www.edg.net.au</div>	<div>PROJECT: COOMERA TAVERN</div>	<div>DRAWING: ELECTRICAL SERVICES LEGEND & DETAILS</div>		
	<div>USE FIGURED DIMENSIONS IN PREFERENCE TO SCALE.</div>		<div>2 CITY CENTRE DRIVE, UPPER COOMERA, QUEENSLAND</div>	<div>SCALE: AS SHOWN AT A1</div>		
	<div>ALL DIMENSIONS TO BE VERIFIED ONSITE.</div>			<div>PROJECT NO: C3734a</div>		
				<div>DRAWING NO: E01</div>		
				<div>REVISION: A</div>		

NOTES

1. EXTENT OF WORKS

THE ELECTRICAL SERVICES SUB-CONTRACT INCLUDES BUT IS NOT LIMITED TO THE FOLLOWING:

- SUPPLY AND INSTALLATION OF ALL COMPONENTS FORMING PART OF THE ELECTRICAL SERVICES.
- INSPECTIONS.
- TESTING AND COMMISSIONING.
- MAINTENANCE.
- CABLING, CABLE SUPPORT SYSTEMS AND ACCESS.
- POWER DISTRIBUTION.
- LIGHTING.
- MODIFICATION, RELOCATION AND EXTENSION AS NECESSARY OF ALL EXISTING SERVICES THAT ARE IMPACTED BY THE WORKS OR REQUIRED TO BE EXTENDED BY THE WORKS.
- REMOVAL OF ALL EXISTING SERVICES MADE REDUNDANT BY THE WORKS.
- DOCUMENTS.
- ANY TEMPORARY WORKS REQUIRED TO KEEP THE HOTEL OPERATING DURING THE CONSTRUCTION PROCESS AND ACCOMMODATE STAGING OF THE WORKS TO REFLECT THE EXECUTION OF THE MAIN CONTRACT WORKS.
- ALL MINOR COMPONENTS AND INCIDENTAL WORKS NOT SPECIFICALLY REFERRED TO, HOWEVER NECESSARY TO COMPLETE THE ELECTRICAL SERVICES INSTALLATION SUCH THAT IT IS HANDED OVER COMPLETE, OPERATIONAL AND FIT FOR THE INTENDED USE.

PRIOR TO COMMENCING WORK CONSULT SITE MANAGEMENT FOR ANY HAZARDOUS MATERIAL AND OR ASBESTOS REGISTERS AS WELL AS UNDERTAKE A THOROUGH INSPECTION OF THE SITE TO IDENTIFY ANY POTENTIAL HAZARDOUS MATERIALS, ASBESTOS AND HEALTH OR SAFETY RISKS. ADVISE THE CONTRACTOR OF ANY POTENTIAL HAZARDOUS MATERIALS, ASBESTOS AND HEALTH OR SAFETY RISKS IF IDENTIFIED AND DO NOT COMMENCE WORK UNTIL AN APPROPRIATE MANAGEMENT PLAN HAS BEEN DEVELOPED AND AGREED TO BY ALL PARTIES.

SUPPLY ALL LABOUR, MATERIALS, EQUIPMENT, AND ALL OTHER ITEMS, WHETHER MENTIONED IN DETAIL OR NOT, REQUIRED FOR THE SATISFACTORY COMPLETION OF THE ELECTRICAL SERVICES INSTALLATION, LEAVING IN FULL WORKING ORDER TO THE SATISFACTION OF THE PROJECT MANAGER.

ACCEPT FULL RESPONSIBILITY FOR LIASING, ARRANGING AND CO-ORDINATION OF ALL WORKS THAT HAVE AN EFFECT ON OR WILL BE AFFECTED BY THE ELECTRICAL SERVICES.

REFER TO THE EQUIPMENT SCHEDULE FOR ADDITIONAL REQUIREMENTS.

2. WORKMANSHIP

ENSURE THAT THE ELECTRICAL WORK IS PERFORMED BY THE HOLDER OF A CURRENT ELECTRICAL SUB CONTRACTOR LICENSE AND THE SERVICES COVERED BY THE ACMA IS PERFORMED BY THE HOLDER OF THE APPROPRIATE CURRENT ACMA LICENSE. ENSURE THE INSTALLATION AND ALL COMPONENTS, FIXTURES, FITTINGS, OUTLETS AND CABLES ARE SUPPLIED AND INSTALLED TO A HIGH STANDARD THROUGHOUT, AND INSTALLED IN A NEAT AND TRADESMAN LIKE MANNER, TO THE CURRENT INDUSTRY STANDARDS. ENSURE ALL MATERIALS AND COMPONENTS OF A SIMILAR TYPE ARE OF THE SAME MANUFACTURER AND INSTALLED IN A UNIFORM MANNER.

IT IS THE ELECTRICAL SUB CONTRACTOR'S RESPONSIBILITY TO ENSURE THAT THE INSTALLATION IS FIT FOR PURPOSE AND IS PROVIDED AS A COMPLETE WORKING INSTALLATION. IT IS THE ELECTRICAL SUB CONTRACTOR'S RESPONSIBILITY TO PROVIDE ALL COMPONENTS, FITTINGS, FIXTURES, SYSTEMS, PROGRAMMING ETC IRRESPECTIVE OF THE LEVEL DETAILED IN THE DOCUMENTS SUCH THAT THE INSTALLATION IS PROVIDED AS A COMPLETE WORKING INSTALLATION.

CONCEAL ALL WIRING AND CONDUITS. EXPOSED CABLING OR CONDUITS ARE GENERALLY NOT ACCEPTABLE. IT IS NOTED THAT CHASING AND REINSTATEMENT WILL BE REQUIRED. ENSURE ALL COMPONENTS, EQUIPMENT AND MATERIALS SUPPLIED ARE NEW, UNUSED, DESIGNED AND SELECTED TO ENSURE SATISFACTORY OPERATION UNDER VARYING ATMOSPHERIC, CLIMATIC, HUMID TROPICAL CONDITIONS WITHOUT DISTORTION AND DETERIORATION IN ANY PART AFFECTING EFFICIENCY AND RELIABILITY OF THE SYSTEMS. DESIGN AND SELECT ALL EQUIPMENT TO PROVIDE THE NECESSARY SAFETY TO HUMAN LIFE AND PROPERTY DURING OPERATION AND MAINTENANCE WITH PARTICULAR ATTENTION GIVEN TO ELECTRICAL SAFETY AND SEGREGATION PRECAUTIONS.

CHECK THE FINISHED PAINTWORK AROUND THE AREA OF EACH INSTALLATION AND TOUCH UP ALL DAMAGED PARTS AND FINISHES AFTER THE INSTALLATION OF THE ELECTRICAL SERVICES.

ALL WORKS ARE TO BE CARRIED OUT IN ACCORDANCE WITH THE BUILDER'S PROGRAM. ENSURE ALL FINAL LOCATIONS OF OUTLETS AND FITTINGS ARE CO-ORDINATED ONSITE WITH THE ARCHITECT AND ALL OTHER SERVICES, TO THE APPROVAL OF THE PROJECT MANAGER. ALLOW TO CO-ORDINATE THE FINAL LOCATION OF ALL EQUIPMENT, FITTINGS, & OUTLETS, SUCH THAT THEY ARE INSTALLED IN ACCORDANCE WITH THE AS3000 RESTRICTED ZONES, AND ARE NOT COVERED INAPPROPRIATELY.

ENSURE THAT ALL METAL SURFACES ARE SUITABLY PROTECTED AGAINST CORROSION, AND THAT ALL PLASTIC MATERIALS ARE UV STABILISED.

PROVIDE ALL MATERIALS AS NEW, AND OF THE HIGHEST CLASS AVAILABLE FOR THEIR RESPECTIVE TYPES. ENSURE ALL ASPECTS OF THE WORK ARE OF A HIGH STANDARD THROUGHOUT, AND INSTALLED IN A NEAT AND TRADESMAN LIKE MANNER, TO THE CURRENT INDUSTRY STANDARDS.

MODIFICATION, RELOCATION AND EXTENSION AS NECESSARY OF ALL EXISTING SERVICES THAT ARE IMPACTED BY THE WORKS OR REQUIRED TO BE EXTENDED BY THE WORKS.

PROVIDE ALL TEMPORARY WORKS REQUIRED TO KEEP THE VENUE AND ALL CONSTRUCTION STAGES OPERATING INCLUDING STAGED COMMISSIONING DURING THE CONSTRUCTION PROCESS.

ALL MINOR COMPONENTS AND INCIDENTAL WORKS NOT SPECIFICALLY REFERRED TO, HOWEVER NECESSARY TO COMPLETE THE ELECTRICAL SERVICES INSTALLATION SUCH THAT IT IS HANDED OVER COMPLETE, OPERATIONAL AND FIT FOR THE INTENDED USE.

CORRUGATED CONDUITS MUST NOT BE USED WITHIN ANY FOOD OR DRINK PREPARATION OR SERVRY AREAS.

CABLE JOINS ARE NOT ACCEPTABLE. ALL CABLING, WIRING, CONDUCTORS AND CONDUITS MUST BE CONCEALED. ALL EXISTING ELECTRICAL SERVICES INCLUDING CABLING AND SWITCHGEAR THAT IS FOUND TO BE REDUNDANT OR MADE REDUNDANT BY THE WORKS MUST BE REMOVED.

IT IS ACCEPTABLE TO USE EXISTING SWITCHGEAR, OUTLETS AND CABLING IF THEY ARE APPROPRIATELY RATED AND THE ELECTRICIAN ACCEPTS RESPONSIBILITY OVER THE SWITCHGEAR / OUTLETS / CABLE AND PROVIDES A WARRANTY OVER IT AS IF IT WAS INSTALLED NEW BY THE ELECTRICIAN.

NOTES

3. STANDARDS

IRRESPECTIVE OF INFORMATION CONTAINED IN THE ELECTRICAL SERVICES DOCUMENTS OR IN INSTRUCTIONS, IT IS THE ELECTRICAL SUB CONTRACTORS RESPONSIBILITY TO ENSURE ALL ELECTRICAL SERVICES WORKS ARE INSTALLED IN ACCORDANCE WITH THE REQUIREMENTS OF THE FOLLOWING. REFER ANY DISCREPANCIES BETWEEN THE REQUIREMENTS OF THE FOLLOWING AND/OR THE ELECTRICAL SERVICES DOCUMENTS AND INSTRUCTIONS TO THE ARCHITECT FOR CLARIFICATION PRIOR TO THE PLACING OF ORDERS, FABRICATION OR INSTALLATION OF THE ITEMS/METHODS IN DISCREPANCY.

- NCC BUILDING CODE OF AUSTRALIA.
- ELECTRICITY ACT.
- ELECTRICAL SAFETY ACT.
- AS/NZS3000.
- AS3008.
- WORKPLACE HEALTH AND SAFETY ACT.
- TELECOMMUNICATIONS ACT.
- ACMA REQUIREMENTS.

4. AUTHORITIES

ENSURE ALL OF THE ELECTRICAL SERVICES COMPLY WITH THE REQUIREMENTS OF ALL REGULATORY AUTHORITIES HAVING JURISDICTION OVER THE SITE INCLUDING BUT NOT LIMITED TO THE FOLLOWING:

- ACMA.
- LOCAL COUNCIL.
- LOCAL SUPPLY AUTHORITY.
- STATE GOVERNMENT DEPARTMENT OF ENVIRONMENT AND HERITAGE.
- QLD GOVERNMENT, DIVISION OF WORKPLACE, HEALTH AND SAFETY.
- QLD FIRE AND EMERGENCY SERVICES.

5. CABLES

UNLESS OTHERWISE SPECIFIED, INSTALL AND TERMINATE CABLES IN ACCORDANCE WITH THE MANUFACTURERS' RECOMMENDATIONS. DETERMINE THE FINAL ROUTES TO SUIT THE BUILDING STRUCTURE AND SITE CONDITIONS. UNLESS NOTED OTHERWISE, PROVIDE ALL 240 VOLT POWER AND LIGHTING WIRING AS 2.5mm² TWIN & EARTH STRANDED COPPER CONDUCTORS, PVC INSULATED 0.6/1kV V75 GRADE TO AS3174, PROTECTED BY A 20 AMP CIRCUIT BREAKER. ALL CONDUIT AND FITTINGS TO BE RIGID UPVC TO AS2053, UNLESS NOTED OTHERWISE.

6. POWER DISTRIBUTION

PROVIDE A NEW DISTRIBUTION BOARD DB-A TO SUPPLY THE NEW CIRCUITS AND ACCOMMODATE THE NEW LIGHTING CONTROLS. PROVIDE A NEW MCB IN THE EXISTING DISTRIBUTION BOARD DB-T2A (INTEGRAL TO THE MSB) AND A NEW SUBMAIN TO SUPPLY DB-A. REPLACE THE THREE THREE PHASE MCBS AND THE ASSOCIATED 3 POLE RCD UNITS WITHIN DB-T2A WITH 3 POLE RCBOs. REPLACE THE TWO THREE PHASE MCBS AND THE ASSOCIATED 3 POLE RCD WITHIN DB-T2B UNITS WITH 3 POLE RCBOs.

ALL OF THE EXISTING SWITCHBOARDS, CIRCUITS, CABLING AND OUTLETS THAT BECOME REDUNDANT ARE TO BE REMOVED AND THE SCHEDULES UPDATED AT PRACTICAL COMPLETION. ANY INTERRUPTION TO THE POWER SUPPLY TO ANY SERVICES OUTSIDE OF THE AREA OF WORKS MUST BE RESTRICTED TO OUTSIDE OF THE HOTELS OPERATING HOURS AND MUST BE ADVISED TO THE OPERATOR IN WRITING AT LEAST ONE WEEK PRIOR.

ALL SWITCHBOARDS AND SWITCHGEAR ARE TO BE SCHNEIDER TO MATCH THE EXISTING. PROVIDE 92268 KEY LOCKABLE DOORS ON ALL SWITCHBOARDS. ALL SWITCHBOARDS AND CIRCUITS MUST BE UNIQUELY NAMED WITH SWITCHBOARDS PROVIDED WITH A LABEL CONTAINING:

- SOURCE NAME.
- SOURCE OVERLOAD RATING IN AMPS.
- SUBMAIN CABLE TYPE, SIZE, CONFIGURATION AND LENGTH.

ALL REMOVABLE PANELS AND ESCUTCHEONS MUST BE SECURED VIA 1/4 TURN LATCHES THAT REMAIN PART OF THE PANEL / ESCUTCHEON. IT IS NOT ACCEPTABLE TO SECURE REMOVABLE PANELS AND ESCUTCHEONS BY BOLTS, NUTS OR SCREWS.

ALL CIRCUIT BREAKERS AND CIRCUIT SCHEDULES MUST BE LABELLED / CONTAIN THE SUBMAIN / CIRCUIT USE AND LOCATION SUCH THAT THE CONNECTION / OUTLET CAN BE SIMPLY IDENTIFIED.

OUTLETS ARE TO BE PROVIDED WITH A NEAT HAND WRITTEN CIRCUIT DESIGNATION BY INDELIBLE INK ON THE FACEPLATE SUCH THAT IT IS NOT VISIBLE WHEN THE COVER IS CONCEALED.

THE POWER DISTRIBUTION COMPONENT OF THIS CONTRACT INCLUDES, BUT IS NOT LIMITED TO THE FOLLOWING EXTENT OF WORK:

- POWER DISTRIBUTION.
- REPLACE THE EXISTING THREE PHASE MCBS AND THE ASSOCIATED 3 POLE RCD UNITS WITH 3 POLE RCBOs
- NEW MCB TO SUPPLY DB-A.
- SUBMAIN FROM THE NEW MCB IN DB-T2A TO DB-A.
- NEW DISTRIBUTION BOARD DB-A.
- CABLE ACCESS WAYS.
- CIRCUITS.
- ISOLATORS AND OUTLETS.
- TESTING AND COMMISSIONING.
- REMOVAL OF ALL EXISTING REDUNDANT SERVICES.
- RECONNECTION OF ALL EXISTING SERVICES THAT REMAIN.

REFER TO THE DB-A AND DB-T2B DISTRIBUTION BOARD SCHEDULES FOR ADDITIONAL REQUIREMENTS AND CIRCUIT DETAILS.

PROVIDE DISTRIBUTION BOARD DB-A AS FOLLOWS:

- WALL MOUNTED.
- IP44 FORM 1.
- WHITE ESCUTCHEON.
- 3 POINT FLUSH LOCKABLE HANDLES ON ALL DOORS.
- LIFT OFF HINGES ON ALL DOORS AND ESCUTCHEONS.
- PROVIDE SHOP DRAWINGS FOR APPROVAL.
- ALL COMPONENTS ARE TO BE LABELLED WITH NON-STICK LABELS.

ENSURE ALL THREE PHASE CIRCUITS ARE PROVIDED WITH CORRECT PHASE ROTATION.

ENSURE ALL OUTLETS AND ISOLATORS ARE POSITIONED SUCH THAT THEY ARE NOT COVERED BY THE EQUIPMENT. THE FINAL POSITION OF ALL OUTLETS AND ISOLATORS ARE TO BE CONFIRMED ON SITE BY THE TENANTS REPRESENTATIVE.

NOTES

7. LIGHTING

ALL FRONT OF HOUSE LIGHTING IS TO BE 2,700K OR 3,000K AND THE BACK OF HOUSE LIGHTING IS TO BE 4,000K.

UNLESS A FITTING HAS BEEN SPECIFIED IN THE EQUIPMENT SCHEDULE THAT CONTAINS A MAIN VOLTAGE LAMP, ALL LIGHT FITTINGS MUST BE PROVIDED AS SOLID-STATE LED WITH A FIVE-YEAR MANUFACTURERS REPLACEMENT WARRANTY AND A MINIMUM TWO YEAR MANUFACTURERS REPLACEMENT AND LABOUR WARRANTY.

ALL FRONT OF HOUSE LIGHTS THAT DO NOT CONTAIN A MAIN VOLTAGE LAMP ARE TO BE DALI DIMMABLE.

REMOTE DRIVERS ARE TO BE USED IF POSSIBLE AND LOCATED IN A CONCEALED ACCESSIBLE POSITION. IF THE DRIVER CAN NOT BE REACHED FROM THE FITTING ITS POSITION MUST BE NOTED ON THE AS CONSTRUCTED DOCUMENTS.

ALL FRONT OF HOUSE LIGHTS THAT CONTAIN MAIN VOLTAGE LAMPS ARE TO BE PROVIDED WITH THE LOWEST OUTPUT PRACTICAL TO ACHIEVE THE REQUIRED ILLUMINATION / EFFECT AND BE TRAILING EDGE PHASE DIMMABLE.

ALL ILLUMINATED SIGNAGE, GAMING BASE FOOTREST LEDS, CARPARK LIGHTS, AND EXTERNAL SECURITY LIGHTS NOT CONSIDERED FRONT OF HOUSE ARE TO BE SWITCHED.

ALL LIGHTING CIRCUITS MUST BE PROTECTED BY A 20 AMP RCBO WITH THE AVERAGE NUMBER OF FITTINGS / DRIVERS SUPPLIED FROM A SINGLE CIRCUIT NOT EXCEEDING 25 WITH THE MAXIMUM NOT EXCEEDING 30.

PROVIDE A DALI 2 ZEN CONTROL LIGHTING CONTROL SYSTEM TO CONTROL THE LIGHTING CONFIGURED WITH THE FOLLOWING SCENES:

INTERNAL

- CLEANING – MANUAL OPERATION. 100% LIGHTS ON AND SIGNS OFF.
- DAY – AUTOMATIC OPERATION FROM 10.00 AM TO 3.30 PM.
- AFTERNOON – AUTOMATIC OPERATION FROM 3.30 PM TO DUSK.
- EVENING – AUTOMATIC OPERATION FROM DUSK TO 8.30 PM.
- NIGHT – AUTOMATIC OPERATION FROM 8.30 PM TO CLOSING.
- CLOSED – MANUAL OPERATION. 100% ON FOR 15 MINUTES THEN TO A SECURITY MODE.

EXTERNAL

- DAY – AUTOMATICALLY OFF FROM DAWN TO DUSK.
- NIGHT – AUTOMATICALLY ON FROM DUSK UNTIL 15 MINUTES PAST CLOSING.
- CLOSED – MANUAL OPERATION. NIGHT MODE FOR 15 MINUTES THEN TO A SECURITY MODE.

SET THE ILLUMINATION LEVELS IN CONSULTATION WITH THE VENUE MANAGER AND OBTAIN WRITTEN APPROVAL FROM THE VENUE MANAGER OF THEIR ACCEPTANCE OF THE ILLUMINATION SCENE LEVELS FOR EACH STAGED HANDOVER AND SUBMIT A COPY OF THE APPROVAL TO THE ARCHITECT.

DIN RAIL MOUNT THE LIGHTING CONTROL EQUIPMENT WITHIN DB-A AND A NEW DEDICATED ENCLOSURE ADJACENT DB-T2B.

ALL OF THE LIGHT FITTINGS, LAMPS AND ACCESSORIES ARE TO BE PROVIDED AS PART OF THIS CONTRACT. THE LIGHTING COMPONENT OF THIS CONTRACT INCLUDES, BUT IS NOT LIMITED TO THE FOLLOWING EXTENT OF WORK:

- LIGHTING.
- LIGHT FITTINGS AND ACCESSORIES.
- EMERGENCY AND EXIT LIGHTING.
- EARTHING OF THE LIGHTING INSTALLATION.
- LIGHTING CONTROL.
- ZEN CONTROL LIGHTING CONTROL SYSTEM.
- LIGHTING SUBCIRCUITS.
- TESTING AND COMMISSIONING.
- RECONNECTION OF THE EXISTING LIGHTING THAT REMAINS.
- REMOVAL OF ALL EXISTING REDUNDANT LIGHTING SERVICES INCLUDING THE REDUNDANT LIGHTING CONTROLS.

COMMISSION THE LIGHTING CONTROL AT PRACTICAL COMPLETION AND AGAIN THREE TIMES DURING THE DEFECTS AND LIABILITY PERIOD TO THE SATISFACTION OF THE OPERATOR.

DALI TO PHASE DIMMING CONVERTERS ARE NOT ACCEPTABLE.

8. DOCUMENTATION

WITHIN TWO WEEKS OF PRACTICAL COMPLETION PROVIDE THE FOLLOWING DOCUMENTATION.

AS CONSTRUCTED DRAWINGS INCLUDING:

- ELECTRICIANS NAME AND CONTACT DETAILS.
- PROJECT NAME, ADDRESS AND DATE OF PRACTICAL COMPLETION.
- FITTING POSITIONS AND TYPES CROSS REFERENCED TO A FITTING / EQUIPMENT SCHEDULE.
- OUTLET, SWITCH, AND CONNECTION POSITIONS CROSS REFERENCED TO A FITTING / EQUIPMENT SCHEDULE.
- REMOTE DRIVER LOCATIONS.
- CIRCUITS CROSS REFERENCED TO A DISTRIBUTION BOARD SCHEDULE.
- LIGHTING CONTROL CHANNELS CROSS REFERENCED TO A LIGHTING CONTROL SCHEDULE.
- POWER SCHEMATIC.
- SWITCHBOARD SHOP DRAWINGS.
- CABLE ACCESS ROUTES.

A FITTING / EQUIPMENT SCHEDULE INCLUDING.

- FITTING DETAILS INCLUDING THE MANUFACTURERS CATALOGUE NUMBERS WITH THE TYPES CROSS REFERENCED TO THE AS CONSTRUCTED DRAWINGS.
- OUTLETS AND SWITCHES INCLUDING THE MANUFACTURERS CATALOGUE NUMBERS WITH THE TYPES CROSS REFERENCED TO THE AS CONSTRUCTED DRAWINGS.

DISTRIBUTION BOARD SCHEDULES CROSS REFERENCED TO THE AS CONSTRUCTED DRAWINGS.

LIGHTING CONTROL SCHEDULE CROSS REFERENCED TO THE AS CONSTRUCTED DRAWINGS.

PHOTOS OF EACH SWITCHBOARD INCLUDING:

- CLOSED POSITION SUCH THAT THE SWITCHBOARD DESIGNATION AND CLEARANCE IS VISIBLE.
- THE SUBMAIN LABEL.
- DOOR/S OPEN ESCUTCHEON/S CLOSED SUCH THAT THE SPARE CAPACITY AND LABELLING IS VISIBLE.
- DOOR/S OPEN ESCUTCHEON/S REMOVED SUCH THAT THE SWITCHGEAR AND INTERNAL CABLING IS VISIBLE.

NOTES

9. EMERGENCY AND EXIT LIGHTING

PROVIDE A SINGLE POINT EMERGENCY LIGHTING SYSTEM THAT COMPLIES WITH THE LATEST ISSUE OF ALL PARTS AS2293 AND THE RELEVANT PARTS OF THE NCC BCA. INSTALL EMERGENCY LIGHT FITTINGS NOMINATED AS MAINTAINED WITH THE LAMP PERMANENTLY ON SUPPLIED VIA AN UNSWITCHED ACTIVE MAINS SUPPLY WHEN THE MAINS SUPPLY IS AVAILABLE. WHEN THE MAINS SUPPLY IS NOT AVAILABLE, THE LAMP IS TO REMAIN ON SUPPLIED BY THE EMERGENCY PACK. SINGLE LAMP MAINTAINED EMERGENCY LIGHTS ARE NOT SWITCHED WITH THE LOCAL GENERAL AREA LIGHTING. (THE LAMP IS ALWAYS ON.)

INSTALL EMERGENCY LIGHT FITTINGS NOMINATED AS NON-MAINTAINED AS FOLLOWS:

- IF THE FITTING IS NOT BEING SWITCHED, THE LAMP IS TO REMAIN OFF WHEN THE MAINS SUPPLY IS AVAILABLE. WHEN THE MAINS SUPPLY IS NOT AVAILABLE THE LAMP IS TO BE SWITCHED ON SUPPLIED BY THE EMERGENCY PACK.
- UNSWITCHED SINGLE LAMP NON-MAINTAINED EMERGENCY LIGHTS ARE NOT SWITCHED WITH THE LOCAL GENERAL AREA LIGHTING. (THE LAMP IS ON ONLY WHEN THE MAINS SUPPLY IS NOT AVAILABLE.)
- IF THE FITTING IS BEING SWITCHED, THE LAMP IS TO BE SUPPLIED AND CONTROLLED WITH THE LOCAL GENERAL AREA LIGHTING WHEN THE MAINS SUPPLY IS AVAILABLE. WHEN THE MAINS SUPPLY IS NOT AVAILABLE THE LAMP IS TO BE SWITCHED ON, SUPPLIED BY THE EMERGENCY PACK. (THE LAMP IS ON WHEN TURNED ON WITH THE LOCAL GENERAL LIGHTING OR THE MAIN SUPPLY IS NOT AVAILABLE.)

INSTALL EMERGENCY LIGHTS SUCH THAT THE STATUS INDICATOR L.E.D. IS CLEARLY VISIBLE AND THE TEST BUTTONS ARE READILY ACCESSIBLE. LABEL EACH CIRCUIT BREAKER WHICH CONTROLS THE UNSWITCHED ACTIVE TO EXIT LIGHTS WITH A LABEL FIXED ADJACENT; ENGRAVED PLASTIC LAMINATE, GREEN BACKGROUND WITH WHITE CHARACTERS: -

WARNING
INTERRUPTING SUPPLY WILL DISCHARGE
EMERGENCY LIGHTING BATTERIES

PROVIDE WRITTEN EVIDENCE OF THE INITIAL COMMISSIONING AND TESTING AND TESTING FOR THE DURATION OF THE MAINTENANCE PERIOD IN ACCORDANCE WITH AS 2293.2.

THIS EVIDENCE IS TO BE IN THE FORM OF A LOG BOOK SIMILAR TO THE GENERAL LIGHTING SERVICE PTY LTD "EMERGENCY LIGHTING MAINTENANCE LOG BOOK AND MANUAL" WHICH IS TO BE PROVIDED BY THE ELECTRICAL SUB-CONTRACTOR AND HAVE ALL ENTRIES FULLY COMPLETED AND BE PRESENTED FOR INSPECTION AT PRACTICAL COMPLETION. THE LOG BOOK IS TO BE RETAINED BY THE ELECTRICAL SUB-CONTRACTOR FOR THE DURATION OF THE MAINTENANCE PERIOD, AND THE SIX MONTHLY TEST AND MAINTENANCE RESULTS ENTERED. THE LOG BOOK IS TO BE PRESENTED FOR APPROVAL AT FINAL COMPLETION (EXPIRY OF THE MAINTENANCE PERIOD) AND WILL BE FORWARDED TO THE OPERATOR FOR THEIR USE.

PROVIDE MAINTENANCE OF THE EMERGENCY AND EXIT LIGHTING INSTALLATION INCLUDING RECORDS IN ACCORDANCE WITH THE LATEST ISSUE OF ALL PARTS AS2293 AND THE RELEVANT PARTS OF THE NCC BCA. PROVIDE THE EMERGENCY LIGHTING SYSTEM WITH A SUPPLY SENSING AND TESTING FACILITY IN ACCORDANCE WITH AS 2293.1.

10. GAMING

THE GAMING ELECTRICIAN WILL BE ENGAGED DIRECTLY BY ENDEAVOUR GROUP TO UNDERTAKE THE FOLLOWING:

- COMMUNICATIONS CABLING.
- GAMING DISTRIBUTION BOARD INCLUDING THE SUPPLY TO THE DISTRIBUTION BOARD.
- CIRCUITS FROM GAMING DISTRIBUTION BOARD AS NECESSARY TO:
- GAMING MACHINES.
- GAMING MODEMS.
- GAMING MACHINE SIGNAGE.
- GAMING ROOM CRTS.
- GAMING ROOM CABLE ACCESS EXCLUDING FLOOR CHASES AND REINSTATEMENT OF THE FLOOR CHASES.

ALL OTHER REMAINING ELECTRICAL SERVICES WITHIN THE GAMING ROOM ARE TO BE PROVIDED AS PART OF THE BUILDING WORKS ELECTRICAL SUB CONTRACT.

11. TAB

THE GAMING ELECTRICIAN WILL BE ENGAGED DIRECTLY BY ENDEAVOUR GROUP TO UNDERTAKE THE FOLLOWING:

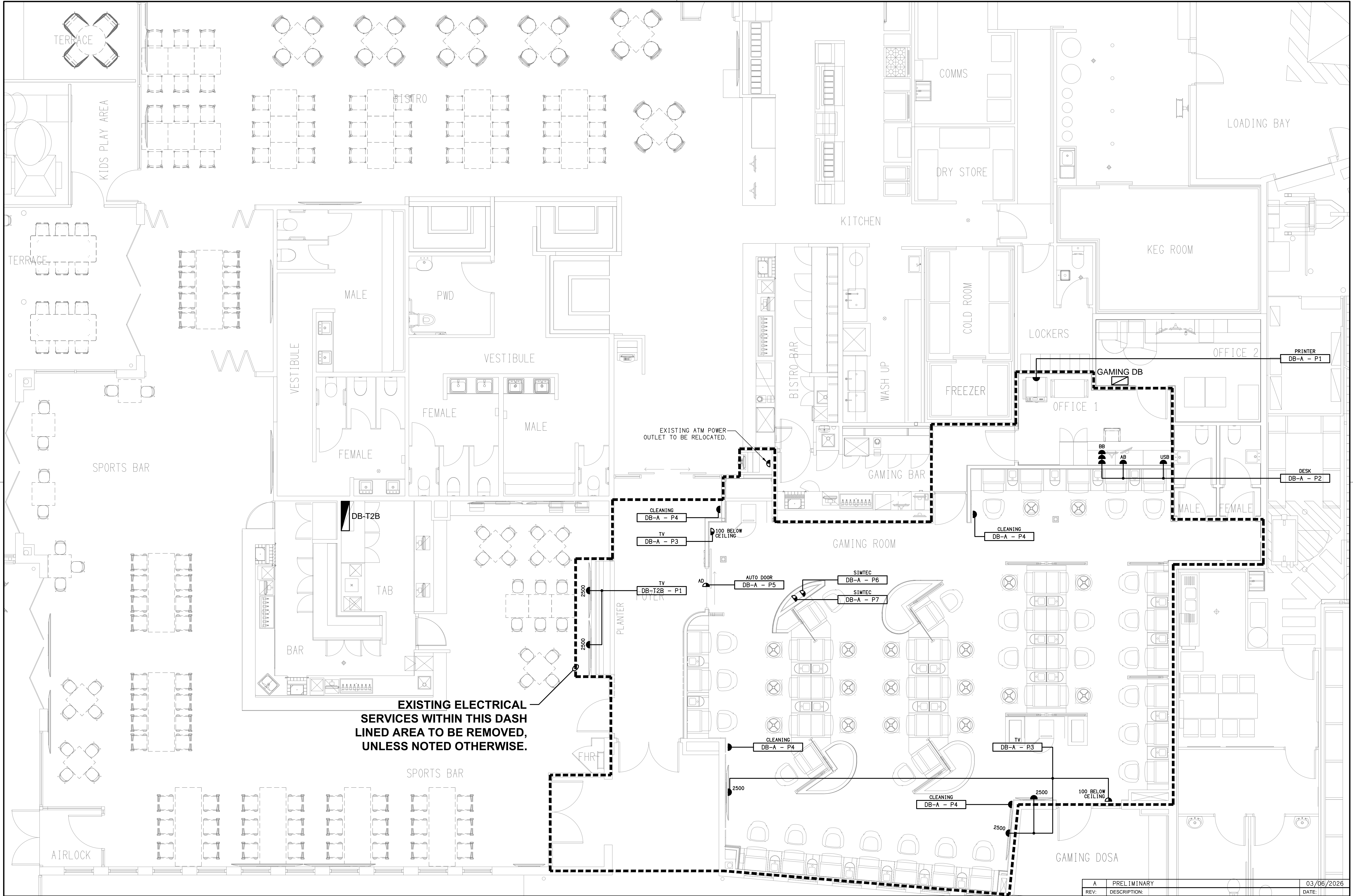
- COMMUNICATIONS CABLING.
- CIRCUITS FROM THE DISTRIBUTION BOARD DB-TAB TO:
- TAB UNITS.
- TAB TELEVISIONS.

ALL OTHER REMAINING ELECTRICAL SERVICES WITHIN THE TAB ROOM ARE TO BE PROVIDED AS PART OF THE BUILDING WORKS ELECTRICAL SUB CONTRACT.

12. ABBREVIATIONS

A – AMP CURRENT RATING
AB – MOUNT ABOVE BENCH.
AFFL – ABOVE FINISHED FLOOR LEVEL.
BB – MOUNT BELOW BENCH.
BH – MOUNT ON BULKHEAD.
CEIL – MOUNT ON CEILING.
CS – MOUNT WITHIN CEILING SPACE.
C/W – COMPLETE WITH.
DALI – DIGITAL ADDRESSABLE LIGHTING INTERFACE.
DW – DISHWASHER.
MCB – MINIATURE CIRCUIT BREAKER.
MCCB – MOLDED CASE CIRCUIT BREAKER.
MSB – MAIN SWITCHBOARD.
MSSB – MECHANICAL SERVICES SWITCHBOARD.
MW – MICROWAVE.
N – NEON / LED INDICATOR WHEN ON.
NTS – NOT TO SCALE.
RCBO – CIRCUIT BREAKER C/W AN INTEGRAL 30ma RESIDUAL CURRENT DEVICE.
RCD – CIRCUIT PROTECTED VIA A 30ma RESIDUAL CURRENT DEVICE.
REF – REFRIGERATOR.
TE – TRAILING EDGE.
UNO – UNLESS NOTED OTHERWISE.
WP – WEATHERPROOF TO IP56 UNO.
500 – NUMBER DENOTES MOUNTING HEIGHT AFFL.

ELECTRICAL DESIGN GROUP BRISBANE PTY LTD ACN 092 710 793		THE COPYRIGHT OF THIS DRAWING REMAINS THE PROPERTY OF THE ELECTRICAL DESIGN GROUP.		PROJECT: COOMERA TAVERN		A PRELIMINARY03/06/2026	
TRADING AS: ELECTRICAL DESIGN GROUP		USE FIGURED DIMENSIONS IN PREFERENCE TO SCALE.		DRAWING: ELECTRICAL SERVICES NOTES		REV: DESCRIPTION: DATE:	
ALL DIMENSIONS TO BE VERIFIED ONSITE.		ELECTRICAL DESIGN GROUP BRISBANE GOLD COAST		2 CITY CENTRE DRIVE, UPPER COOMERA, QUEENSLAND		SCALE: NOT TO SCALE AT A1	
P.O.Box 15, Sherwood Q.4075 Phone: (07) 3278 4375 Email: brisbane@edg.net.au Web: www.edg.net.au		PROJECT NO: C3734a		DRAWING NO: E02		REVISION: A	



ELECTRICAL DESIGN GROUP BRISBANE
PTY LTD
ACN 092 710 793
TRADING AS:
ELECTRICAL DESIGN GROUP

THE COPYRIGHT OF THIS DRAWING
REMAINS THE PROPERTY OF THE
ELECTRICAL DESIGN GROUP.
USE FIGURED DIMENSIONS
IN PREFERENCE TO SCALE.
ALL DIMENSIONS TO BE
VERIFIED ONSITE.

ELECTRICAL DESIGN GROUP
ELECTRICAL BUILDING SERVICES CONSULTANTS
BRISBANE GOLD COAST

P.O.Box 15, Sherwood Q.4075
Phone: (07) 3278 4375
Email: brisbane@edg.net.au
Web: www.edg.net.au

PROJECT:
COOMERA TAVERN

2 CITY CENTRE DRIVE, UPPER COOMERA, QUEENSLAND

A	PRELIMINARY	03/06/2026
REV:	DESCRIPTION:	DATE:

DRAWING:
**ELECTRICAL SERVICES
FLOOR PLAN**

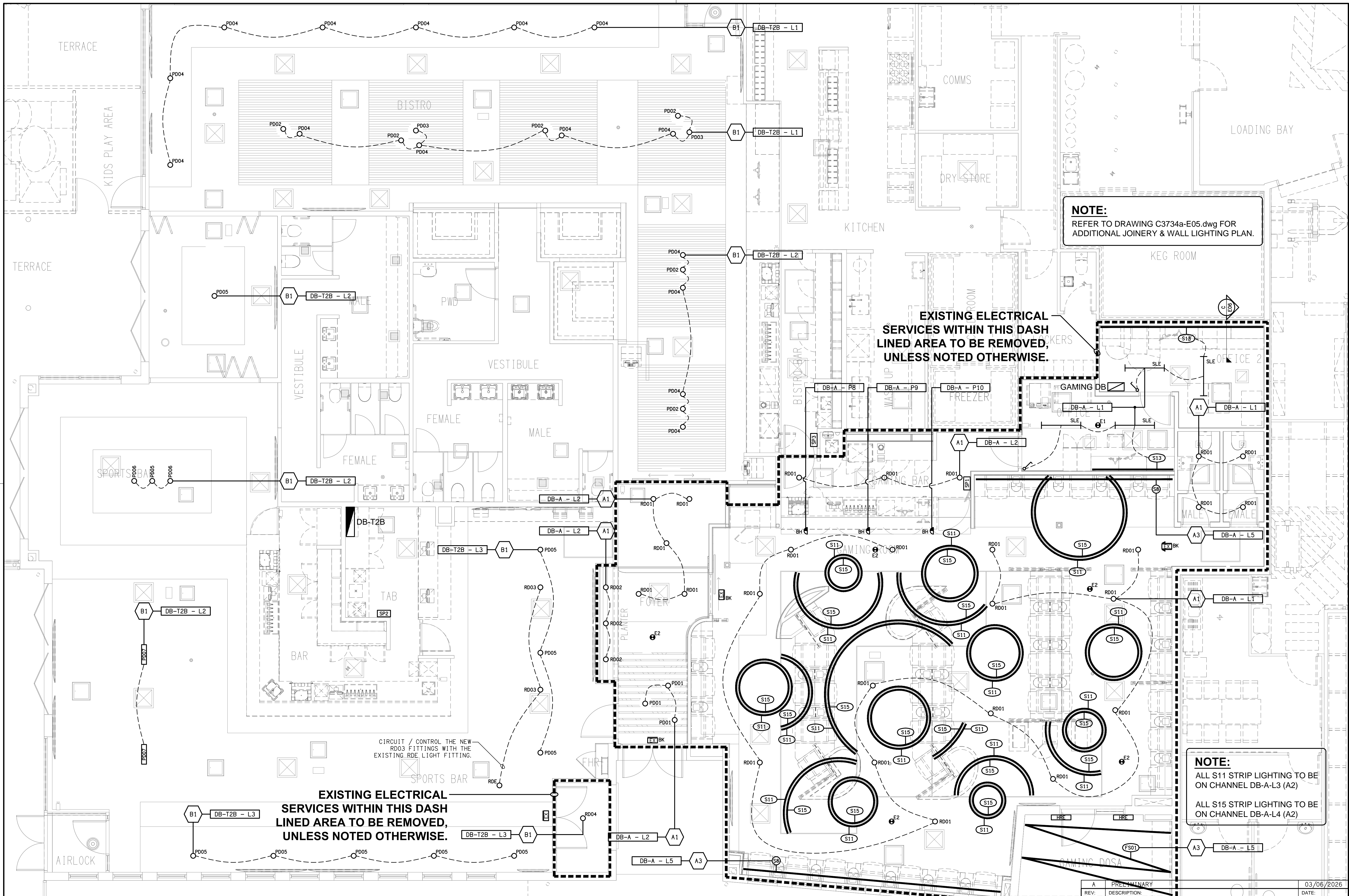
SCALE:
1:50 UNO

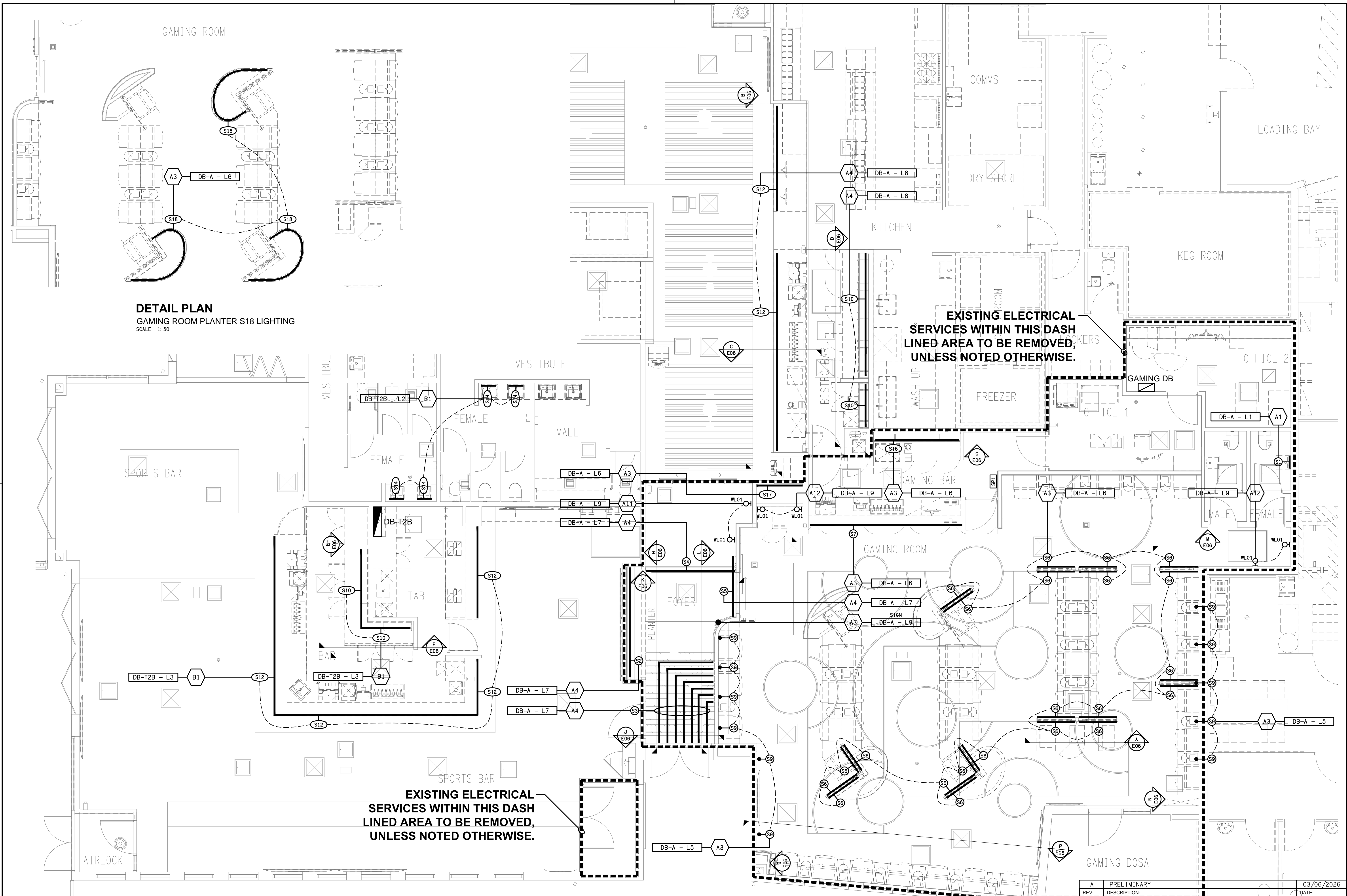
AT A1

PROJECT NO:
C3734a

DRAWING NO:
E03

REVISION:
A

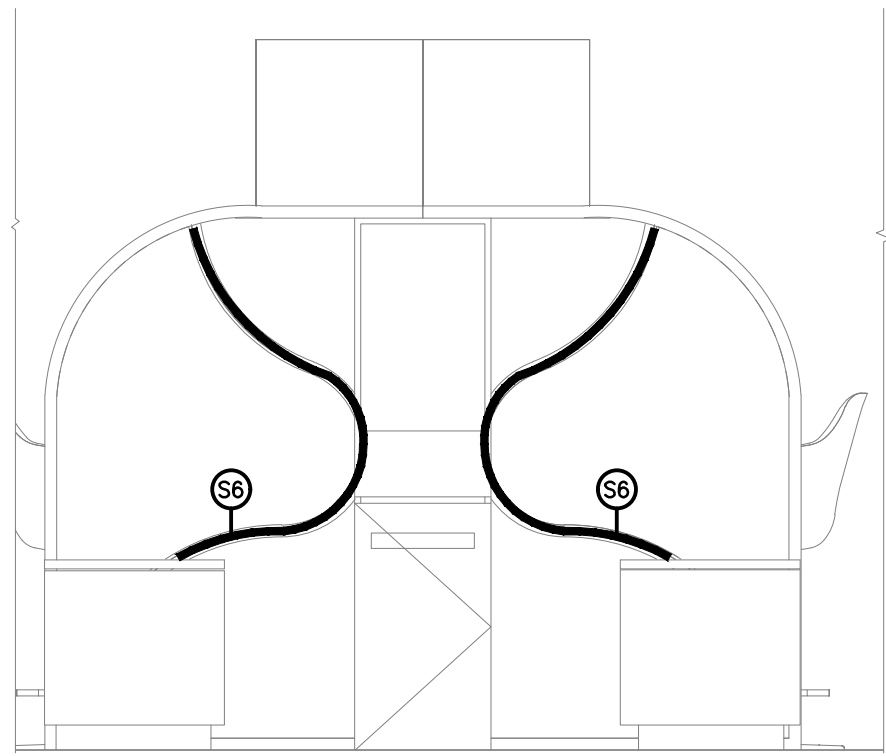




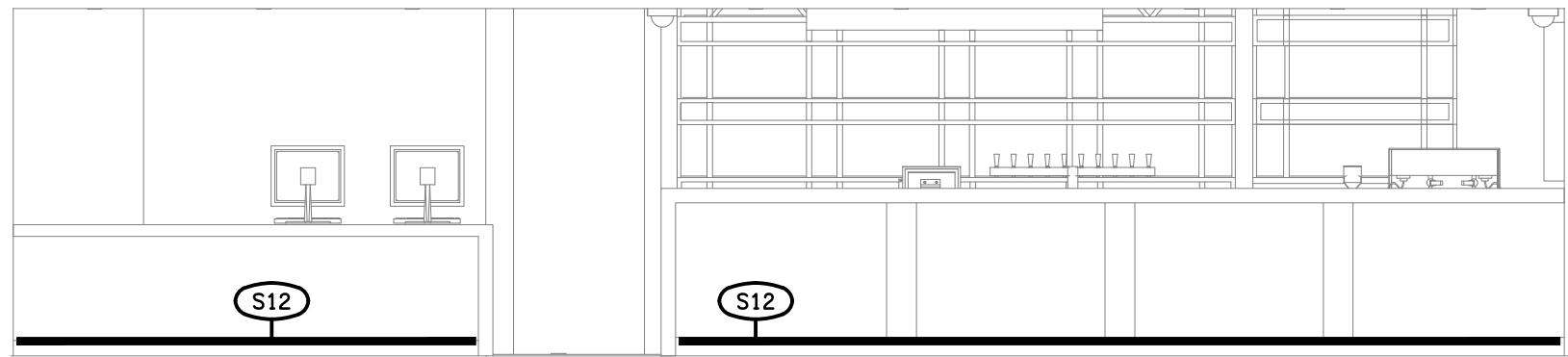
DETAIL PLAN
GAMING ROOM PLANTER S18 LIGHTING
SCALE 1:50

EXISTING ELECTRICAL
SERVICES WITHIN THIS DASH
LINED AREA TO BE REMOVED,
UNLESS NOTED OTHERWISE.

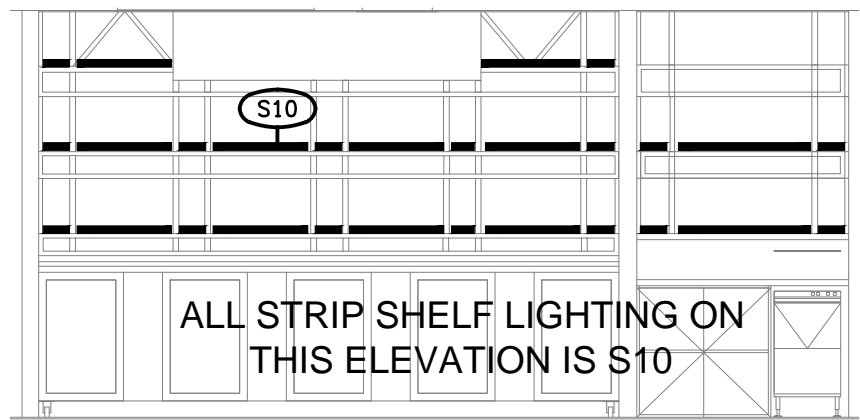
EXISTING ELECTRICAL
SERVICES WITHIN THIS DASH
LINED AREA TO BE REMOVED,
UNLESS NOTED OTHERWISE.



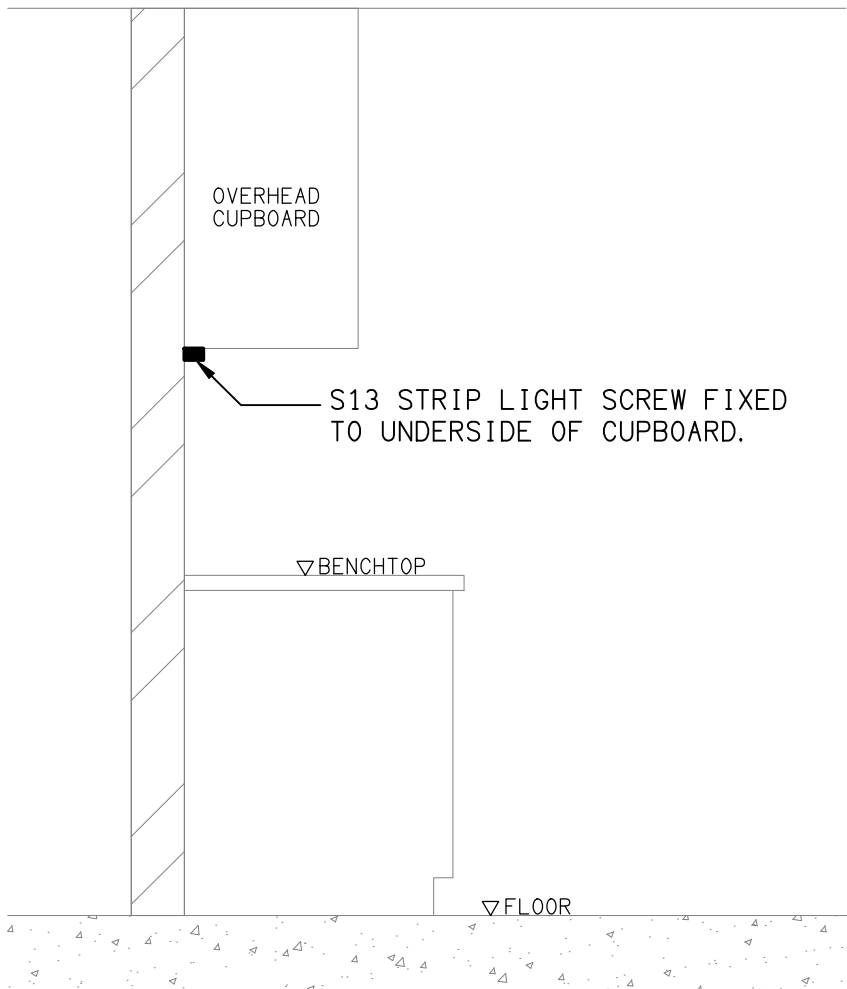
DETAIL A
TYPICAL GAMING SCREEN LIGHT S6 SECTION
SCALE 1: 25



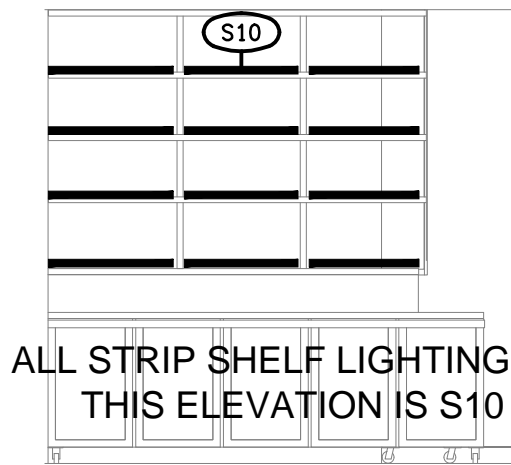
DETAIL B
BISTRO FRONT COUNTER ELEVATION
SCALE 1: 50



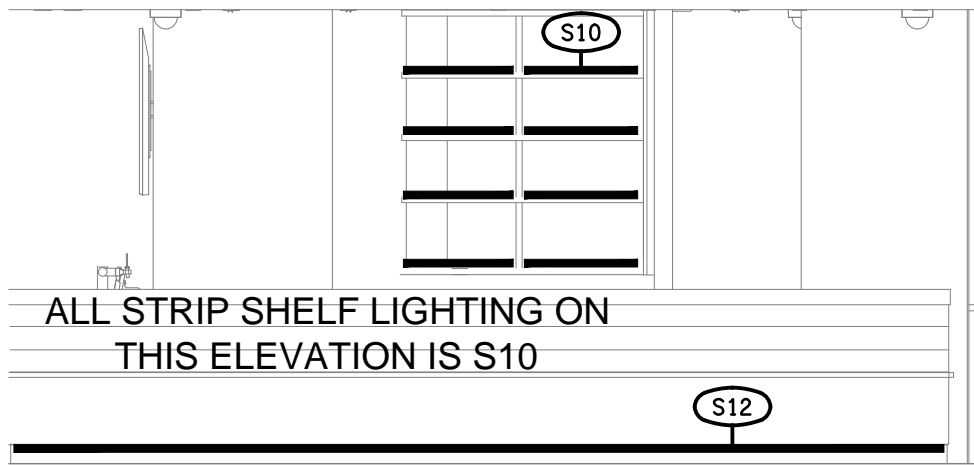
DETAIL D
BISTRO REAR WALL ELEVATION
SCALE 1: 50



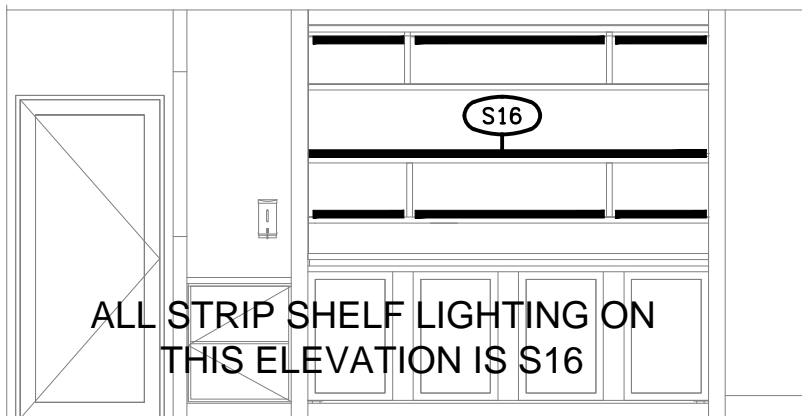
DETAIL C
TYPICAL OFFICE S13 STRIP LIGHT MOUNTING
NOT TO SCALE



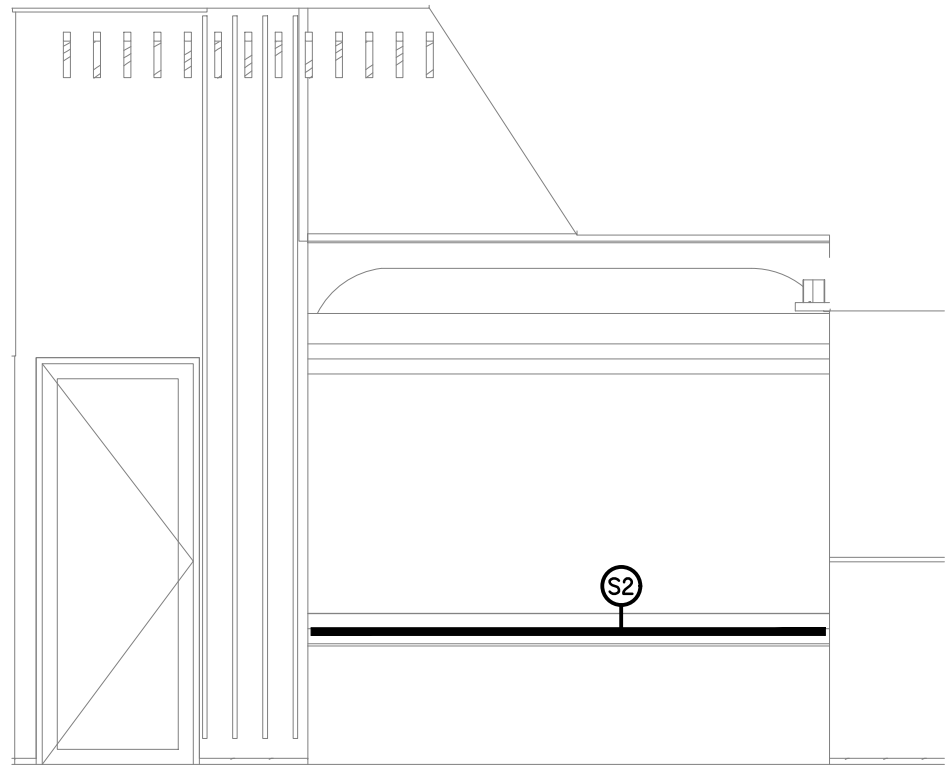
DETAIL E
SPORTS BAR REAR WALL ELEVATION
SCALE 1: 50



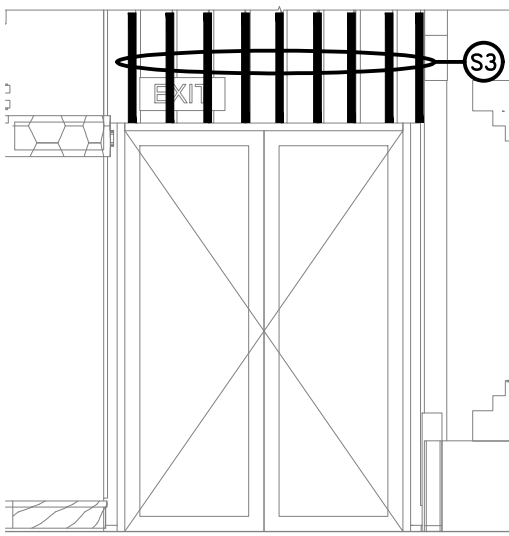
DETAIL F
SPORTS BAR FRONT COUNTER ELEVATION
SCALE 1: 50



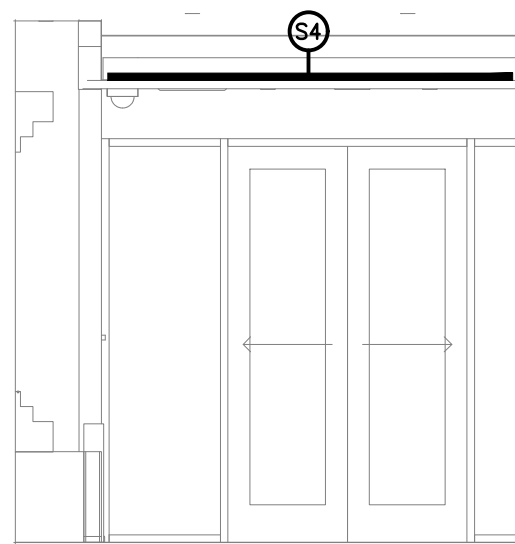
DETAIL G
GAMING BAR REAR WALL ELEVATION
SCALE 1: 50



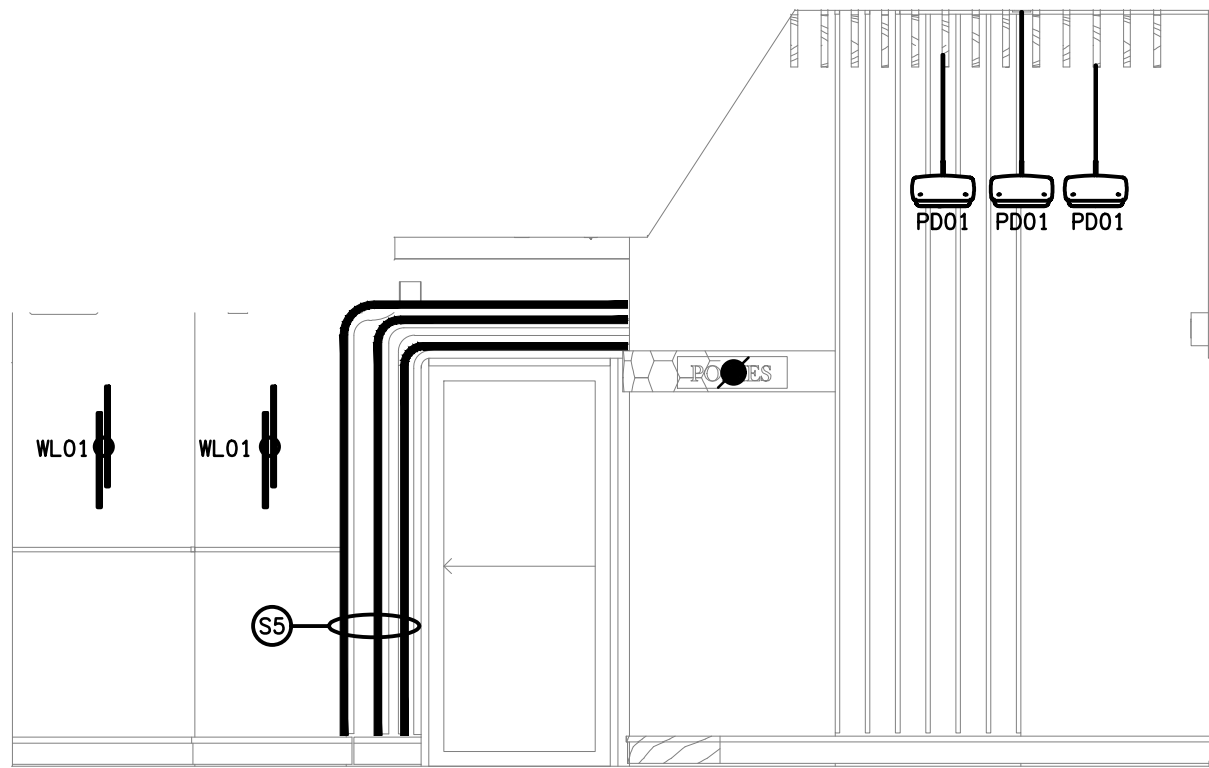
DETAIL H
FOYER WALL ELEVATION
SCALE 1: 50



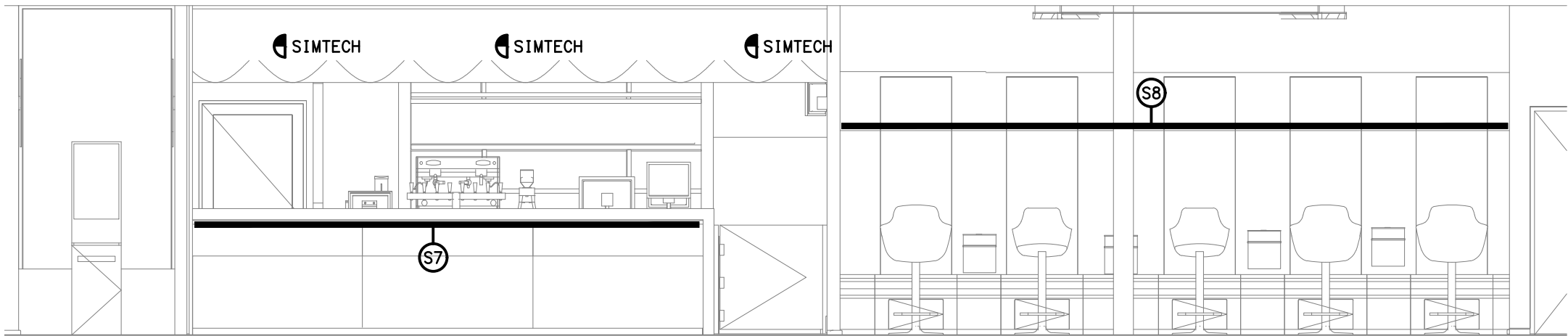
DETAIL J
FOYER WALL ELEVATION
SCALE 1: 50



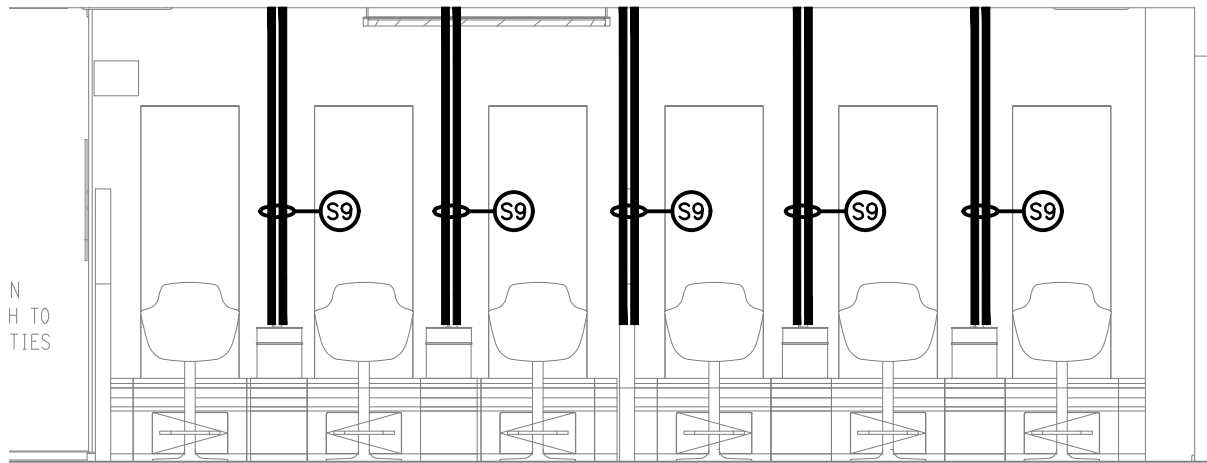
DETAIL K
FOYER WALL ELEVATION
SCALE 1: 50



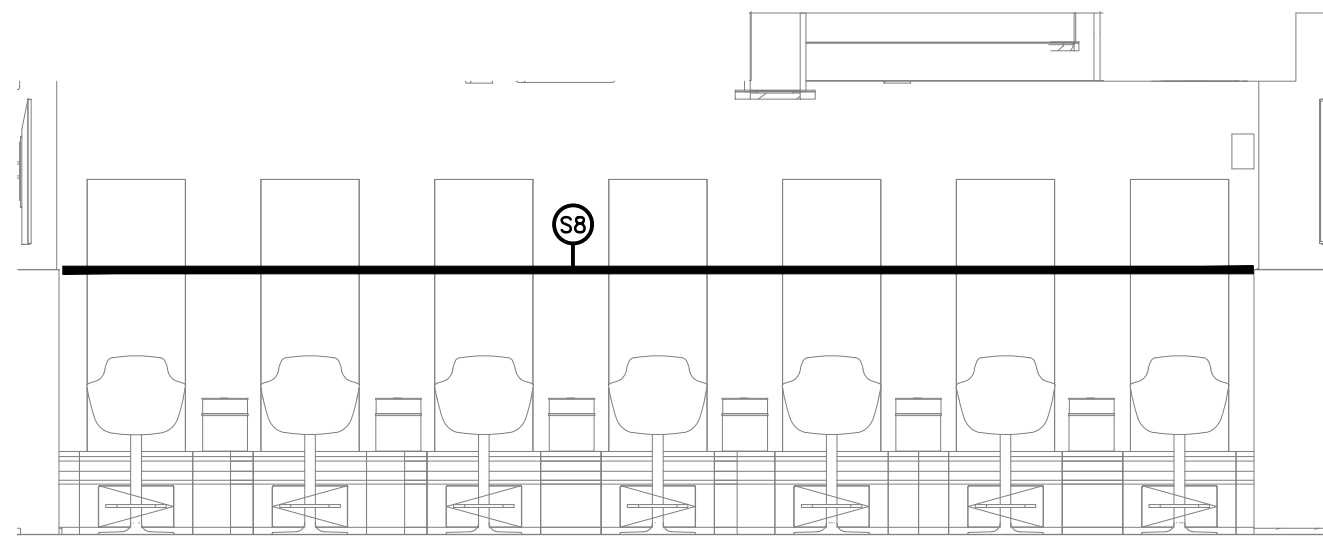
DETAIL L
FOYER WALL ELEVATION
SCALE 1: 50



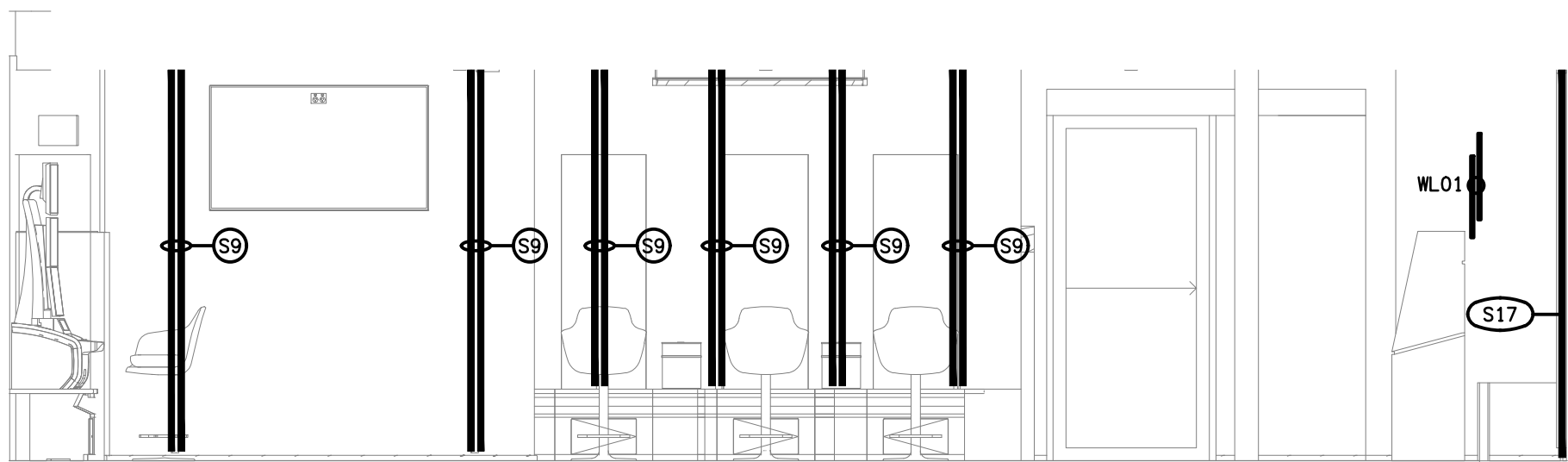
DETAIL M
GAMING ROOM WALL ELEVATION
SCALE 1: 50



DETAIL N
GAMING ROOM WALL ELEVATION
SCALE 1: 50



DETAIL P
GAMING ROOM WALL ELEVATION
SCALE 1: 50



DETAIL Q
GAMING ROOM WALL ELEVATION
SCALE 1: 50