

C3747a - MELBOURNE HOTEL, BUNDABERG

C3747a-0001(C).xls

ELECTRICAL SERVICES CONTRACT DOCUMENT SCHEDULE

REVISION C - 19 MAY 2026

ISSUING INFORMATION				DATE OF ISSUE										
		DAY	MONTH	YEAR	REASON FOR ISSUE	07	12	19						
						05	05	05						
						26	26	26						
						T	T	T						
A = APPROVAL		C = CONSTRUCTION		N = COORDINATION		P = PRELIMINARY			T = TENDER					

DISTRIBUTION				NUMBER OF COPIES								
WWW.EDG.NET.AU				1E	1E	1E						
CAYAS & WARD ARCHITECTS				1E	1E	1E						
P = PRINT T = TRACING D = DISC F = EMAIL F = FAX												

[illegible]



ELECTRICAL DESIGN GROUP

ELECTRICAL BUILDING SERVICES CONSULTANTS

P.O. Box 15, SHERWOOD Q. 4075

Phone: (07) 3278 4375 Fax: (07) 3716 0222

Web Site: www.edg.net.au Email: brisbane@edg.net.au

C3747a - MELBOURNE HOTEL, BUNDABERG

C3747a-0002(C).xls

ELECTRICAL EQUIPMENT SCHEDULE

REVISION C - 19 MAY 2026

THE LIGHT FITTING SUPPLIER CONTACT DETAILS MAY BE AVAILABLE ON THE EDG WEBSITE VIA THE FOLLOWING LINK
www.edg.net.au/Links/Lighting.htm

TYPE	LAMPS	DESCRIPTION	COLOUR / ACCESSORY	CATALOGUE No	REV
S1	14W/M 2700K LED	LED STRIP WITHIN A SCREW FIXED EXTRUSION FIXED BEHIND THE TV AS PER THE ARCHITECTURAL DETAIL. PROVIDE THE STRIP WITH REMOTE DALI DIMMABLE POWER SUPPLIES AS REQUIRED LOCATE THE POWER SUPPLIES IN A CONCEALED ACCESSIBLE POSITION NOTED ON THE AS CONSTRUCTED DOCUMENTS.	NATURAL	RAPID LED R2334 2700K PLUS R2380 ALUMINIUM EXTRUSION OPAL DIFFUSER AND POWER SUPPLY & DALI CONTROLLER	B
S2	10W/M 2700K LED	IP67 LED FLEX SCREW FIXED ON THE SUSPENDED CEILING FEATURE AS PER THE ARCHITECTURAL DETAIL. PROVIDE THE STRIP WITH REMOTE DALI DIMMABLE POWER SUPPLIES AS REQUIRED LOCATE THE POWER SUPPLIES IN A CONCEALED ACCESSIBLE POSITION NOTED ON THE AS CONSTRUCTED DOCUMENTS. CONFIRM THE BEND PLANE (TOP OR SIDE) ON SITE WITH THE ARCHITECT.	NATURAL	RAPID LED R2321 OR R2322 - 2700K + POWER SUPPLY & DALI CONTROLLER	B
S3	10W/M 2700K LED	IP67 LED FLEX SCREW FIXED IN THE CEILING PELMET AS PER THE ARCHITECTURAL DETAIL. PROVIDE THE STRIP WITH REMOTE DALI DIMMABLE POWER SUPPLIES AS REQUIRED LOCATE THE POWER SUPPLIES IN A CONCEALED ACCESSIBLE POSITION NOTED ON THE AS CONSTRUCTED DOCUMENTS. CONFIRM THE BEND PLANE (TOP OR SIDE) ON SITE WITH THE ARCHITECT.	NATURAL	RAPID LED R2321 OR R2322 - 2700K + POWER SUPPLY & DALI CONTROLLER	B
S4	14.4W/M 2700K LED	LED STRIP WITHIN A SCREW FIXED EXTRUSION C/W DIFFUSER MOUNTED WITHIN THE CURTAIN PELMET TO ILLUMINATE THE CURTAIN AS PER THE ARCHITECTURAL DETAIL. PROVIDE THE STRIP WITH REMOTE POWER SUPPLY LOCATED IN A CONCEALED ACCESSIBLE POSITION NOTED ON THE AS CONSTRUCTED DOCUMENTS.	NATURAL	RAPID LED R2334 2700K PLUS R2381 ALUMINIUM EXTRUSION OPAL DIFFUSER AND POWER SUPPLY & DALI CONTROLLER	A
S5	14.4W/M 2700K LED	LED STRIP WITHIN A SCREW FIXED EXTRUSION INTO THE REAR BAR JOINERY C/W DIFFUSER AS PER THE ELEVATION. MOUNT AS PER THE ARCHITECTURAL DETAIL. PROVIDE THE STRIP WITH REMOTE DALI DIMMABLE POWER SUPPLIES AS REQUIRED LOCATE THE POWER SUPPLIES IN A CONCEALED ACCESSIBLE POSITION NOTED ON THE AS CONSTRUCTED DOCUMENTS.	NATURAL	RAPID LED R2334 2700K PLUS R2381 ALUMINIUM EXTRUSION OPAL DIFFUSER AND POWER SUPPLY & DALI CONTROLLER	A
S6	14.4W/M 2700K LED	LED STRIP WITHIN A SCREW FIXED EXTRUSION INTO THE REAR BISTRO SERVERY JOINERY C/W DIFFUSER AS PER THE ELEVATION. MOUNT AS PER THE ARCHITECTURAL DETAIL. PROVIDE THE STRIP WITH REMOTE DALI DIMMABLE POWER SUPPLIES AS REQUIRED LOCATE THE POWER SUPPLIES IN A CONCEALED ACCESSIBLE POSITION NOTED ON THE AS CONSTRUCTED DOCUMENTS.	NATURAL	RAPID LED R2334 2700K PLUS R2381 ALUMINIUM EXTRUSION OPAL DIFFUSER AND POWER SUPPLY & DALI CONTROLLER	A



ELECTRICAL DESIGN GROUP

ELECTRICAL BUILDING SERVICES CONSULTANTS

P.O. Box 15, SHERWOOD Q. 4075

Phone: (07) 3278 4375 Fax: (07) 3716 0222

Web Site: www.edg.net.au Email: brisbane@edg.net.au

C3747a - MELBOURNE HOTEL, BUNDABERG

C3747a-0002(C).xls

ELECTRICAL EQUIPMENT SCHEDULE

REVISION C - 19 MAY 2026

THE LIGHT FITTING SUPPLIER CONTACT DETAILS MAY BE AVAILABLE ON THE EDG WEBSITE VIA THE FOLLOWING LINK
www.edg.net.au/Links/Lighting.htm

TYPE	LAMPS	DESCRIPTION	COLOUR / ACCESSORY	CATALOGUE No	REV
S7	RGB WW LED	LED RGB WW STRIPS WITHIN A SCREW FIXED EXTRUSION MOUNTED VERTICALLY ON EACH SIDE OF THE ENTRY AND ACROSS THE ENTRY CEILING AS PER THE ARCHITECTURAL DETAIL. PROVIDE THE STRIP WITH A REMOTE RGBWW DALI DRIVER / POWER SUPPLY SIZED TO ACCOMMODATE THE TOTAL STRIP LENGTH LOCATED IN A CONCEALED ACCESSIBLE POSITION NOTED ON THE AS CONSTRUCTED DOCUMENTS.	BLACK HOUSING	NPA - SF16 RGB 3000K + HOUSING	A
S8	14.4W/M 2700K LED	LED STRIP WITHIN A SCREW FIXED EXTRUSION C/W DIFFUSER MOUNTED WITHIN THE COUNTER PELMET AS PER THE ARCHITECTURAL DETAIL. PROVIDE THE STRIP WITH REMOTE DALI DIMMABLE POWER SUPPLIES AS REQUIRED LOCATE THE POWER SUPPLIES IN A CONCEALED ACCESSIBLE POSITION NOTED ON THE AS CONSTRUCTED DOCUMENTS.	NATURAL	RAPID LED R2334 2700K PLUS R2381 ALUMINIUM EXTRUSION OPAL DIFFUSER AND POWER SUPPLY & DALI CONTROLLER	A
S9	14.4W/M 4000K LED	LED STRIP WITHIN A SCREW FIXED EXTRUSION C/W DIFFUSER MOUNTED UNDER THE OVERHEAD CUPBOARD AGAINST THE SPLASH BACK AS PER THE ARCHITECTURAL DETAIL. PROVIDE THE STRIP WITH A REMOTE POWER SUPPLY LOCATED IN A CONCEALED ACCESSIBLE POSITION NOTED ON THE AS CONSTRUCTED DOCUMENTS. SUPPLY AND SWITCH THE S18 WITH THE EXISTING ROOM LIGHTS.	WHITE	RAPID LED R2334 PLUS ALUMINIUM EXTRUSION AND DRIVER	B
PD01	3 X TRAILING EDGE DIMMABLE 240 VOLT 2200K B22 LED 250 LUMENS +/- 10% 15,000 HOUR LIFE LAMP	1000 LONG DECORATIVE PENDANT TO BE CENTRED OVER THE POOL TABLE. CONFIRM THE SUSPENSION HEIGHT ONSITE WITH THE ARCHITECT	AGED SOLID COPPER	FAT SHACK VINTAGE CONE SWING PENDANT LIGHT SKU p439-SML-BLK	A
PD02	6 X TRAILING EDGE DIMMABLE 240 VOLT 2200K G9 LED 250 LUMENS +/- 10% 15,000 HOUR LIFE LAMP	1000DIA DECORATIVE PENDANT.	BRASS	ZEST LIGHTING ARCHED 6 LIGHT PENDANT	A
PD03	INTEGRAL TRAILING EDGE DIMMABLE LED	600DIA DECORATIVE PENDANT. CONFIRM THE SUSPENSION HEIGHT ONSITE WITH THE ARCHITECT	GYPSUM	BEACON LIGHTING MFL BALLARE 1 LIGHT PENDANT 017155	A
TL01	9W 2700K LED PER FITTING	SURFACE TRACK C/W FITTINGS AS INDICATED PROVIDE EACH TRACK WITH A REMOTE DALI DIMMABLE DRIVER LOCATED IN A CONCEALED ACCESSIBLE POSITION NOTED ON THE AS CONSTRUCTED DOCUMENTS.	BLACK	LUMEN 8 NIX 45 TRACK AND SOLIS SON145TK09930 FITTINGS DALI DIMMABLE	A



ELECTRICAL DESIGN GROUP

ELECTRICAL BUILDING SERVICES CONSULTANTS

P.O. Box 15, SHERWOOD Q. 4075

Phone: (07) 3278 4375 Fax: (07) 3716 0222

Web Site: www.edg.net.au Email: brisbane@edg.net.au

C3747a - MELBOURNE HOTEL, BUNDABERG

C3747a-0002(C).xls

ELECTRICAL EQUIPMENT SCHEDULE

REVISION C - 19 MAY 2026

THE LIGHT FITTING SUPPLIER CONTACT DETAILS MAY BE AVAILABLE ON THE EDG WEBSITE VIA THE FOLLOWING LINK
www.edg.net.au/Links/Lighting.htm

TYPE	LAMPS	DESCRIPTION	COLOUR / ACCESSORY	CATALOGUE No	REV
WL01	2 X TRAILING EDGE DIMMABLE 240 VOLT 2700K 400LUMEN +/-10% E14 T125 LED	DECORATIVE 460 WIDE X 120 HIGH WALL LIGHT MOUNTED AS PER THE ARCHITECTURAL DETAILS ALLOW TO INSTALL	BRASS	ZEST LIGHTING BRASS SLIM ROUND TUBE FUNCTIONAL PICTURE WALL LIGHT	B
WL02	INTEGRAL TRAILING EDGE DIMMABLE LED	DECORATIVE 200 DIA WALL LIGHT MOUNTED AS PER THE ARCHITECTURAL DETAILS PROVIDE A PLYWOOD PANEL BEHIND THE LIGHT AS PER THE ARCHITECTURAL DETAIL	TRAVERTINE	FAT SHACK VINTAGE FAT HARMERS LED WALL LIGHT W1101- BEG-SML	A
WL03	2 X TRAILING EDGE DIMMABLE LED GU10 240 VOLT 2700K 250LUMEN +/-10%	150 H X 55MM DIA WALL LIGHT MOUNTED AS PER THE ARCHITECTURAL DETAIL MOUNT THE FITTING ON A TRADITIONAL ROUND TIMBER SINGLE SWITCH 90 DIA MOUNTING BLOCK, TO ENABLE WIRING TO RUN DOWN COPPER PIPING. THE WIRING TO EACH WL03 IS TO DROP VERTICALLY DOWN TOT HE FITTING WITHIN SURFACE MOUNTED COPPER CONDUIT FIXED TO THE BRICKWORK WALL USING COPPER SADDLES	COPPER FITTING MOUNTING BLOCK FINISH: PORTER'S PAINT LIQUID COPPER.	FAT SHACK VINTAGE PRODUCT NAME: DOUBL COPPER PIPE WALL LIGHT PRODUCT CODE: W034	A
WL04	TRAILING EDGE DIMMABLE GU10 LED 240 VOLT 2700K 200 LUMEN +/-10%	DECORATIVE WALL LIGHT MOUNTED AS PER THE ARCHITECTURAL DETAILS	BRUSHED COPPER	FAT SHACK VINTAGE BERTH OUTDOOR WALL LIGHT PRODUCT CODE: W198-CPR	A
WL05	2 X TRAILING EDGE DIMMABLE GU10 LED 240 VOLT 2700K 200 LUMEN +/-10%	DECORATIVE WALL LIGHT MOUNTED AS PER THE ARCHITECTURAL DETAILS	NATURAL	BEACON LIGHTING TRAVIATO 2 LIGHT UP/DOWN WALL SCONCE IN TRAVERTINE PRODUCT CODE: SKU 307011	A
WL06	450LUMEN 2700K LED	SURFACE MOUNTED ADJUSTABLE DOWNLIGHT C/W REMOTE DALI DIMMABLE POWER SUPPLY IT IS ACCEPTABLE TO USE A SUITABLY SIZED SINGLE POWER SUPPLY / DALI CONTROLLER TO SUPPLY MULTIPLE L7 FITTINGS ON THE SAME CHANNEL. LOCATE THE POWER SUPPLY AND DALI CONTROLLER IN A CONCEALED ACCESSIBLE POSITION WITH THE LOCATION NOTED ON THE AS CONSTRUCTED DOCUMENTS.	BLACK	NPA L-FX-SL-ARA- SP1106-12V-27K-D	A
UL01	REPLACE THE EXISTING GROUND MOUNTED FITTINGS WITH LIKE FOR LIKE				A
UL02	REPLACE THE EXISTING GROUND MOUNTED FITTINGS WITH LIKE FOR LIKE				A
RD01	15W 2700K LED	RECESSED DOWNLIGHT C/W 24 DEG BEAM REMOTE DALI DIMMABLE DRIVER	BLACK	RAPID R1077-WH- 12W-2700-DALI	A

C3747a-0002(C).xls

Pages inc. any attach. 3 of 7



ELECTRICAL DESIGN GROUP

ELECTRICAL BUILDING SERVICES CONSULTANTS

P.O. Box 15, SHERWOOD Q. 4075

Phone: (07) 3278 4375 Fax: (07) 3716 0222

Web Site: www.edg.net.au Email: brisbane@edg.net.au

C3747a - MELBOURNE HOTEL, BUNDABERG

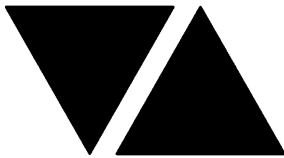
C3747a-0002(C).xls

ELECTRICAL EQUIPMENT SCHEDULE

REVISION C - 19 MAY 2026

THE LIGHT FITTING SUPPLIER CONTACT DETAILS MAY BE AVAILABLE ON THE EDG WEBSITE VIA THE FOLLOWING LINK
www.edg.net.au/Links/Lighting.htm

TYPE	LAMPS	DESCRIPTION	COLOUR / ACCESSORY	CATALOGUE No	REV
RD02	18W 2700K LED	RECESSED DOWNLIGHT C/W 60 DEG BEAM REMOTE DALI DIMMABLE DRIVER	WHITE	RAPID R1352-WH-18W-2700-DALI	A
RD03	12W 3000K LED	RECESSED IP54 DOWNLIGHT C/W 90 DEG BEAM REMOTE DALI DIMMABLE DRIVER	WHITE	RAPID R1042-12 DALI	A
RD04	15W 2700K LED	RECESSED ADJUSTABLE DOWNLIGHT C/W 24 DEG BEAM REMOTE DALI DIMMABLE DRIVER	WHITE	RAPID R1074-WH-15W-XW-24 DALI	A
RD05	12W 3000K LED	RECESSED IP54 DOWNLIGHT C/W 90 DEG BEAM REMOTE DALI DIMMABLE DRIVER	WHITE	RAPID R1042-12 DALI	A
RD06	18W 2700K LED	RECESSED DOWNLIGHT C/W 60 DEG BEAM REMOTE DRIVER	WHITE	RAPID R1352-WH-18-4000	A
RD07	18W 2700K LED	REPLACE THE EXISTING RECESSED DOWNLIGHT C/W 60 DEG BEAM REMOTE DRIVER	WHITE	RAPID R1352-WH-18W-2700	B
RD08	15W 2700K LED	REPLACE THE EXISTING RECESSED DOWNLIGHT C/W 24 DEG BEAM REMOTE DRIVER	BLACK	RAPID R1077-WH-12W-2700	B
SL01	40W 4000K LED	SURFACE MOUNTED IP65 1200 LONG BATTEN C/W INTEGRAL DRIVER	NA	RAPID R3540-S-TRI	A
SL02	25W 3000K LED	SURFACE MOUNTED CAN DOWNLIGHT C/W REMOTE DALI DIMMABLE DRIVER	WHITE	RAPID R1147-WH-WH-36-SM-DALI	A
GL01	12W 2700K LED	GARDEN ELV SPIKE LIGHT. PROVIDE EACH GROUP OF GL01 FITTINGS WITH A REMOTE COMMON DALI DIMMABLE POWER SUPPLY. LOCATE DALI CONTROLLER /POWER SUPPLY IN A CONCEALED ACCESSIBLE POSITION NOTED ON THE AS CONSTRUCTED DOCUMENTS.	BLACK	GAMMA ILLUMINATION RULLO 1373-FL-2700K-12W-24V+ 373	A
RT01	30W 4000K LED	RECESSED 300 X 1200 PANEL LIGHT C/W RECESS KIT AND REMOTE DRIVER	WHITE	RAPID LED R3206-TRI-RM	A



ELECTRICAL DESIGN GROUP

ELECTRICAL BUILDING SERVICES CONSULTANTS

P.O. Box 15, SHERWOOD Q. 4075

Phone: (07) 3278 4375 Fax: (07) 3716 0222

Web Site: www.edg.net.au Email: brisbane@edg.net.au

C3747a - MELBOURNE HOTEL, BUNDABERG

C3747a-0002(C).xls

ELECTRICAL EQUIPMENT SCHEDULE

REVISION C - 19 MAY 2026

THE LIGHT FITTING SUPPLIER CONTACT DETAILS MAY BE AVAILABLE ON THE EDG WEBSITE VIA THE FOLLOWING LINK
www.edg.net.au/Links/Lighting.htm

TYPE	LAMPS	DESCRIPTION	COLOUR / ACCESSORY	CATALOGUE No	REV
E1	LED	EMERGENCY LIGHT: RECESSED NON-MAINTAINED EMERGENCY LIGHT. AS2293 CLASSIFICATION C0-D40 - C90-D40.	WHITE	CLEVERTRONICS LLIFE	A
E2	LED	EMERGENCY LIGHT: RECESSED NON-MAINTAINED EMERGENCY LIGHT. AS2293 CLASSIFICATION C0-D40 - C90-D40.	BLACK	CLEVERTRONICS LLIFEBLK	A
E3	LED	EMERGENCY LIGHT: SURFACE MOUNTED NON-MAINTAINED EMERGENCY LIGHT. AS2293 CLASSIFICATION C0-D40 - C90-D40.	BLACK	CLEVERTRONICS LLIFESMBLK	A
EX	LED	EXIT LIGHT: MAINTAINED 24M VIEWING DISTANCE EXIT LIGHT C/W DIFFUSERS & DIRECTIONAL ARROWS AS SHOWN. CEILING SURFACE MOUNT OR WALL MOUNT BETWEEN 2100mm & 2700mm AFFL IF THERE IS NO VERTICAL SURFACE TO MOUNT THE FITTING ON WITHIN THIS RANGE CONFIRM THE MOUNTING HEIGHT WITH THE ENGINEER. AS2293 CLASSIFICATION C0-D1.25- C90-D2	WHITE	CLEVERTRONICS LUBPRO-SM	A
EX	LED	EXIT LIGHT: MAINTAINED 24M VIEWING DISTANCE EXIT LIGHT C/W DIFFUSERS & DIRECTIONAL ARROWS AS SHOWN. CEILING SURFACE MOUNT OR WALL MOUNT BETWEEN 2100mm & 2700mm AFFL IF THERE IS NO VERTICAL SURFACE TO MOUNT THE FITTING ON WITHIN THIS RANGE CONFIRM THE MOUNTING HEIGHT WITH THE ENGINEER. AS2293 CLASSIFICATION C0-D1.25- C90-D2	BLACK	CLEVERTRONICS LUBPRO-SM-BLK	A
HL01	1050WATT	1200 LONG LINEAR HEAT LAMP C/W CUSTOM SUPPORT AND INTEGRAL SWITCH MOUNTED UNDER THE UPPER SHELF AS PER THE ARCHITECTURAL DETAIL ALL CABLING IS TO BE CONCEALED	SILVER	ROBAND HQ1200E	A
HL02	1050WATT	1200 LONG LINEAR HEAT LAMP C/W CUSTOM SUPPORT AND INTEGRAL SWITCH MOUNTED UNDER THE LOWER SHELF AS PER THE ARCHITECTURAL DETAIL ALL CABLING IS TO BE CONCEALED	SILVER	ROBAND HQ1200E	A
CHANNEL x		CONTROL CHANNEL WITH A NUMERICAL REFERENCE. REFER TO THE POWER AND LIGHTING CONTROL SCHEMATIC / SCHEDULE			A
ONE-WAY LIGHT SWITCH		ONE-WAY LIGHT SWITCH C/W CIRCUIT IDENTIFICATION ON THE FACEPLATE BEHIND THE SURROUND MOUNTED AT 1000mm AFFL UNLESS NOTED OTHERWISE.	WHITE UNLESS NOTED AS BLACK (BK)	CLIPSAL C2000 SERIES FACEPLATE	A
LIGHTING CONTROL SWITCH PANEL (SPx)		6-BUTTON PROGRAMMABLE SWITCH PANEL C/W CENTRAL LCD DISPLAY MOUNTED AT 1000mm AFFL UNLESS NOTED OTHERWISE.	ALUMINIUM	DYNALITE ANTUMBRA DISPLAY	A



ELECTRICAL DESIGN GROUP

ELECTRICAL BUILDING SERVICES CONSULTANTS

P.O. Box 15, SHERWOOD Q. 4075

Phone: (07) 3278 4375 Fax: (07) 3716 0222

Web Site: www.edg.net.au Email: brisbane@edg.net.au

C3747a - MELBOURNE HOTEL, BUNDABERG

C3747a-0002(C).xls

ELECTRICAL EQUIPMENT SCHEDULE

REVISION C - 19 MAY 2026

THE LIGHT FITTING SUPPLIER CONTACT DETAILS MAY BE AVAILABLE ON THE EDG WEBSITE VIA THE FOLLOWING LINK
www.edg.net.au/Links/Lighting.htm

TYPE	LAMPS	DESCRIPTION	COLOUR / ACCESSORY	CATALOGUE No	REV
MANUAL DALI POT DIMMER / LIGHT SWITCH (DIM)		DALI POT C/W INTEGRAL 20 DALI DEVICE POWER SUPPLY . FACTORY SET POWER ON RETURN TO LAST LEVEL.	WHITE	SMARTSCAPE DALI RD20 CLIPSAL C2000	A
EXISTING CEILING FAN (FE)		EXISTING CEILING FANS AND ITS ASSOCIATED CONTROLS TO BE RETAINED.			A
NEW CEILING FAN TYPE 1 (F01)		1400 DIA CEILING FAN TO BE PROVIDED WITH A DEDICATED FAN CONTROLLER	MATTE BLACK	VENTAIR SPYDC1423BL	C
NEW CEILING FAN TYPE 2 (F02)		900 DIA CEILING FAN TO BE PROVIDED WITH A DEDICATED FAN CONTROLLER . CONFIRM THE SUSPENSION LENGTH ON SITE WITH THE ARCHITECT	MATTE BLACK	VENTAIR SPYDC903BL	C
FAN CONTROLLER (FC)		ON OFF LOW MEDIUM HIGH FAN CONTROLLER WALL MOUNTED AT 1000 AFFL . ENSURE THE CONTROLLER IS COMPATIBLE WITH THE FAN.	WHITE	CLIPSAL C2000 SERIES FACEPLATE	A
SINGLE POWER OUTLET		SINGLE POWER OUTLET C/W CIRCUIT IDENTIFICATION ON THE FACEPLATE BEHIND THE SURROUND MOUNT AT 300mm AFFL U.N.O. RATING 10A U.N.O.	WHITE UNLESS NOTED AS BLACK (BK)	CLIPSAL C2000 SERIES	A
DOUBLE POWER OUTLET		DOUBLE POWER OUTLET C/W CIRCUIT IDENTIFICATION ON THE FACEPLATE BEHIND THE SURROUND MOUNT AT 300mm AFFL U.N.O. RATING 10A U.N.O.	WHITE UNLESS NOTED AS BLACK (BK)	CLIPSAL C2000 SERIES	A
SIGN CONNECTION		COORDINATE THE LOCATION AND CONNECTION WITH THE SIGN CONTRACTOR ENSURING THE CONNECTION ARE PROVIDED WITH APPROPRIATE WEATHER PROTECTION AND ARE CONCEALED FROM VIEW.			A
SINGLE-PHASE ISOLATOR		SINGLE-PHASE WEATHERPROOF ISOLATOR. MOUNT AT 1350mm AFFL U.N.O. RATING 20A U.N.O. CONNECT TO EQUIPMENT VIA FLEXIBLE CONDUIT.	-	CLIPSAL WHT20	A
THREE-PHASE ISOLATOR		THREE-PHASE WEATHERPROOF ISOLATOR. MOUNT AT 1350mm AFFL U.N.O. RATING 20A U.N.O. CONNECT TO EQUIPMENT VIA FLEXIBLE CONDUIT.	-	CLIPSAL WHT35	A
DB-L		PROVIDE A NEW DISTRIBUTION BOARD DB-L AS PER THE DB-L SCHEDULE AND NOTES. PROVIDE A REMOVABLE HAT SECTION FROM THE TOP OF THE DISTRIBUTION BOARD TO THE CEILING. THE HAT SECTION IS TO BE OF THE SAME MATERIAL, COLOUR DEPTH AND WIDTH AS THE DISTRIBUTION BOARD. LOCATE DB-L INTERNALLY ON LEVEL 1 WITH THE POSITION AGREED ON SITE WITH THE ALH PROJECT MANAGER			A
DB-P		PROVIDE A NEW DISTRIBUTION BOARD DB-P AS PER THE DB-P SCHEDULE AND NOTES. PROVIDE A REMOVABLE HAT SECTION FROM THE TOP OF THE DISTRIBUTION BOARD TO THE CEILING. THE HAT SECTION IS TO BE OF THE SAME MATERIAL, COLOUR DEPTH AND WIDTH AS THE DISTRIBUTION BOARD. LOCATE DB-P INTERNALLY ON LEVEL 1 WITH THE POSITION AGREED ON SITE WITH THE ALH PROJECT MANAGER			A

C3747a-0002(C).xls

Pages inc. any attach. 6 of 7



ELECTRICAL DESIGN GROUP

ELECTRICAL BUILDING SERVICES CONSULTANTS

P.O. Box 15, SHERWOOD Q. 4075

Phone: (07) 3278 4375 Fax: (07) 3716 0222

Web Site: www.edg.net.au Email: brisbane@edg.net.au

C3747a - MELBOURNE HOTEL, BUNDABERG

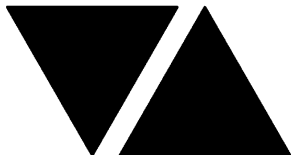
C3747a-0002(C).xls

ELECTRICAL EQUIPMENT SCHEDULE

REVISION C - 19 MAY 2026

THE LIGHT FITTING SUPPLIER CONTACT DETAILS MAY BE AVAILABLE ON THE EDG WEBSITE VIA THE FOLLOWING LINK
www.edg.net.au/Links/Lighting.htm

TYPE	LAMPS	DESCRIPTION	COLOUR / ACCESSORY	CATALOGUE No	REV
MSB		EXISTING HOTEL MAIN SWITCH BOARD TO BE MODIFIED AS PER THE MSB ELEVATION AND NOTES			A
DB-CJB		GAMING DISTRIBUTION BOARD TO BE PROVIDED BY GAMING ELECTRICIAN			A



ELECTRICAL DESIGN GROUP

ELECTRICAL BUILDING SERVICES CONSULTANTS

P.O. Box 15, SHERWOOD Q. 4075

Phone: (07) 3278 4375 Fax: (07) 3716 0222

Web Site: www.edg.net.au Email: brisbane@edg.net.au

C3747a - MELBOURNE HOTEL, BUNDABERG

C3747a-0004(B).xls

LIGHTING CONTROL SCHEDULE

REVISION B - 12 MAY 2026

MISCELLANEOUS EQUIPMENT				REV	
ITEM	DESCRIPTION			A	
SP1	AS DETAILED IN THE EQUIPMENT SCHEDULE 6-BUTTON PROGRAMMABLE SWITCH PANEL C/W CENTRAL LCD DISPLAY DYNALITE ANTUMBRA DISPLAY ALUMINIUM			A	
SP2	AS DETAILED IN THE EQUIPMENT SCHEDULE 6-BUTTON PROGRAMMABLE SWITCH PANEL C/W CENTRAL LCD DISPLAY DYNALITE ANTUMBRA DISPLAY ALUMINIUM			A	
SP3	AS DETAILED IN THE EQUIPMENT SCHEDULE 6-BUTTON PROGRAMMABLE SWITCH PANEL C/W CENTRAL LCD DISPLAY DYNALITE ANTUMBRA DISPLAY ALUMINIUM			A	
SP4	AS DETAILED IN THE EQUIPMENT SCHEDULE 6-BUTTON PROGRAMMABLE SWITCH PANEL C/W CENTRAL LCD DISPLAY DYNALITE ANTUMBRA DISPLAY ALUMINIUM			A	
PE CELL	PROGRAMMABLE PE CELL DUS 90CS CONFIRM THE LOCATION ON SITE WITH THE ARCHITECT			A	
TIME CLOCK	PROGRAMMABLE TIME CLOCK ENVISION GATEWAY PDEG LOCATED IN DB-A			A	
CONTROL MODULE 1				A	
TYPE:	DYNALITE DDMC802			A	
DESCRIPTION	8CH MODULAR CONTROLLER			A	
LOCATION	DIN RAIL MOUNTED WITHIN DB-L			A	
BUS:	A			A	
CHANNEL	CONTROL	DESCRIPTION		A	
		LOCATION	CIRCUIT	USE	A
1	DGTM202		DB-L -L1	PD01	A
2				WL01	A
3	DGTM202			WL03	A
4					A
5					A
6					A
7					A
8					A
CONTROL MODULE 2				A	
TYPE:	DYNALITE DDMC802			A	
DESCRIPTION	8CH MODULAR CONTROLLER			A	
LOCATION	DIN RAIL MOUNTED WITHIN DB-L			A	
BUS:	A			A	
CHANNEL	CONTROL	DESCRIPTION		A	
		LOCATION	CIRCUIT	USE	A
9	DGTM202		DB-L -L2	PD02	A
10				PD03	A
11	DGTM202			WL01	A
12				WL04	A
13	DGTM202			WL02	A
14					A
15	DGTM202			WL05	A
16					A



ELECTRICAL DESIGN GROUP

ELECTRICAL BUILDING SERVICES CONSULTANTS

P.O. Box 15, SHERWOOD Q. 4075

Phone: (07) 3278 4375 Fax: (07) 3716 0222

Web Site: www.edg.net.au Email: brisbane@edg.net.au

C3747a - MELBOURNE HOTEL, BUNDABERG

C3747a-0004(B).xls

LIGHTING CONTROL SCHEDULE

REVISION B - 12 MAY 2026

CONTROL MODULE 3					A
TYPE:		DYNALITE DDRC1220FR-GL			A
DESCRIPTION		12CH 20 A FEEDTHROUGH RELAY CONTROLLER			A
LOCATION		DIN RAIL MOUNTED WITHIN DB-L			A
BUS:		A			A
CHANNEL	CONTROL	DESCRIPTION			A
		LOCATION	CIRCUIT	USE	A
17	SWITCHED	ROOF	DB-L -L3	SIGNAGE	A
18	SWITCHED	EXTERNAL	DB-L -L4	SIGNAGE	A
19	SWITCHED	EXTERNAL	DB-L -L4	SIGNAGE	A
20	SWITCHED	EXTERNAL	DB-L -L5	SIGNAGE	A
21	SWITCHED	EXTERNAL	DB-L -L5	UL01 UL02	A
22	SWITCHED	EXTERNAL	DB-L -L4	SL01	A
23					A
24					A
25					A
26					A
27					A
28					A
CONTROL MODULE 4					A
TYPE:		DYNALITE DDBC1200			A
DESCRIPTION		12CH BOARD CAST DALI CONTROLLER			A
LOCATION		DIN RAIL MOUNTED WITHIN DB-L			A
BUS:		A			A
CHANNEL	CONTROL	DESCRIPTION			A
		LOCATION	CIRCUITS	USE	A
29	DALI DIM		DB-L- L6	WL06	A
30	DALI DIM		DB-L- L6	S1	A
31	DALI DIM		DB-L- L6	S5	A
32	DALI DIM		DB-L- L6	S8	A
33	DALI DIM		DB-L- L6	S5	A
34	DALI DIM		DB-L- L6	S1	A
35	DALI DIM		DB-L- L6	S1	A
36					A
37					A
38					A
39					A
40					A



ELECTRICAL DESIGN GROUP

ELECTRICAL BUILDING SERVICES CONSULTANTS

P.O. Box 15, SHERWOOD Q. 4075

Phone: (07) 3278 4375 Fax: (07) 3716 0222

Web Site: www.edg.net.au Email: brisbane@edg.net.au

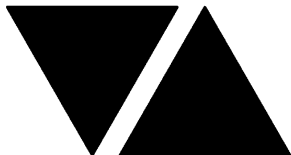
C3747a - MELBOURNE HOTEL, BUNDABERG

C3747a-0004(B).xls

LIGHTING CONTROL SCHEDULE

REVISION B - 12 MAY 2026

CONTROL MODULE 5					A
TYPE:		DYNALITE DDBC1200			A
DESCRIPTION		12CH BOARD CAST DALI CONTROLLER			A
LOCATION		DIN RAIL MOUNTED WITHIN DB-L			A
BUS:		A			A
CHANNEL	CONTROL	DESCRIPTION			A
		LOCATION	CIRCUITS	USE	A
41	DALI DIM		DB-L- L7	RD05	A
42	DALI DIM		DB-L- L7	RD04	A
43	DALI DIM		DB-L- L7	RD02	A
44	DALI DIM		DB-L- L7	TL01	A
45	DALI DIM		DB-L- L8	RD04	B
46	DALI DIM		DB-L- L8	RD02	A
47	DALI DIM		DB-L- L8	RD03	A
48	DALI DIM		DB-L- L8	TL01	A
49	DALI DIM		DB-L- L8	RD02	A
50	DALI DIM		DB-L- L8	RD02	A
51					A
52					A
CONTROL MODULE 6					A
TYPE:		DYNALITE DDBC1200			A
DESCRIPTION		12CH BOARD CAST DALI CONTROLLER			A
LOCATION		DIN RAIL MOUNTED WITHIN DB-L			A
BUS:		A			A
CHANNEL	CONTROL	DESCRIPTION			A
		LOCATION	CIRCUITS	USE	A
53	DALI DIM		DB-L- L9	S8	A
54	DALI DIM		DB-L- L9	GL01	A
55	DALI DIM		DB-L- L9	S1	A
56	DALI DIM		DB-L- L9	S7	A
57	DALI DIM		DB-L- L9	S8	A
58	DALI DIM		DB-L- L9	S1	A
59	DALI DIM		DB-L- L9	S6	A
60	DALI DIM		DB-L- L10	RD01	A
61	DALI DIM		DB-L- L10	RD03	A
62	DALI DIM		DB-L- L10	RD01	A
63	DALI DIM		DB-L- L10	RD01	A
64	DALI DIM		DB-L- L10	RD05	A

**C3747a - MELBOURNE HOTEL, BUNDABERG****C3747a-0004(B).xls****LIGHTING CONTROL SCHEDULE****REVISION B - 12 MAY 2026**

CONTROL MODULE 7					A
TYPE:		DYNALITE DDBC1200			A
DESCRIPTION		12CH BOARD CAST DALI CONTROLLER			A
LOCATION		DIN RAIL MOUNTED WITHIN DB-L			A
BUS:		A			A
CHANNEL	CONTROL	DESCRIPTION			A
		LOCATION	CIRCUIT	USE	A
65	DALI DIM		DB-L- L11	S4	A
66	DALI DIM		DB-L- L11	S3	A
67	DALI DIM		DB-L- L11	S2	A
68	DALI DIM		DB-L- L11	RD01	A
69	DALI DIM		DB-L- L12	RD02	B
70	DALI DIM		DB-L- L12	SL02	A
71	DALI DIM		DB-L- L12	RD02	A
72	DALI DIM		DB-L- L12	RD02	A
73	DALI DIM		DB-L- L13	RD05	A
74	DALI DIM		DB-L- L13	RD02	A
75	DALI DIM		DB-L- L13	RD02	A
76					A
CONTROL MODULE 8					A
TYPE:		DYNALITE DDBC1200			A
DESCRIPTION		12CH BOARD CAST DALI CONTROLLER			A
LOCATION		DIN RAIL MOUNTED WITHIN DB-L			A
BUS:		A			A
CHANNEL	CONTROL	DESCRIPTION			A
		LOCATION	CIRCUIT	USE	A
77	DALI DIM		DB-L- L14	RD01	A
78	DALI DIM		DB-L- L14	RD02 & RD04	B
79					A
80					A
81					A
82					A
83					A
84					A
85					A
86					A
87					A
88					A



ELECTRICAL DESIGN GROUP

ELECTRICAL BUILDING SERVICES CONSULTANTS

P.O. Box 15, SHERWOOD Q. 4075

Phone: (07) 3278 4375

Website: www.edg.net.au Email: brisbane@edg.net.au

C3747a - MELBOURNE HOTEL, BUNDABERG

C3747a-0005(B).xls

DISTRIBUTION BOARD DB-P

REVISION B - 12 MAY 2026

							REV
FAULT CURRENT:		6KA		MAIN SWITCH:		250 NON AUTO LOAD BREAK	A
CHASSIS SIZE:		96 POLE		SOURCE:		MSB	A
CHASSIS RATING:		250A		SUPPLY CABLE:		4C+E 70	A
PHASES:		3					A
REFER TO THE EQUIPMENT SCHEDULE AND NOTES FOR ADDITIONAL REQUIREMENTS. PROVIDE THE DB WITH A FULL WIDTH EMPTY DIN RAIL TO ACCOMMODATE FUTURE CONTACTORS AND CONTROLS. PROVIDE THE DB WITH SURGE PROTECTION. ENSURE THE SCHEDULE INCLUDES THE CIRCUIT USE AND LOCATION.							A
CIRC	PH	CIRCUIT BREAKER (amps)	CONTROL EQUIPMENT	CABLE SIZE (mm ²)	LOCATION	CIRCUIT USE	
P1	1	20	RCBO	2.5	BAR	REF	A
P2	1	20	RCBO	2.5	BAR	POS	A
P3	1	20	RCBO	2.5	BAR	GLASS WASHER	A
P4	1	20	RCBO	2.5	BAR	GPO	A
P5	1	20	RCBO	2.5	BAR	UBET	A
P6	1	20	RCBO	2.5	BAR	UBET	A
P7	1	20	RCBO	2.5	BAR	KENO	A
P8	1	20	RCBO	2.5	BAR	TV	A
P9	1	20	RCBO	2.5	BAR	TV	A
P10	1	20	RCBO	2.5	BAR	CLEANING	A
P11	1	20	RCBO	2.5	BAR	TV	A
P12	1	20	RCBO	2.5	ENTRY	AUTO DOORS	A
P13	1	20	RCBO	2.5	GAMING	CLEANING	A
P14	1	20	RCBO	2.5	GAMING	TV	A
P15	1	25	RCBO	4.0	CASHIER / BAR	COFFEE	A
P16	1	20	RCBO	2.5	CASHIER / BAR	REF	A
P17	1	20	RCBO	2.5	CASHIER / BAR	GPO	A
P18	1	20	RCBO	2.5	CASHIER / BAR	GLASS WASHER	A
P19	1	20	RCBO	2.5	CASHIER / BAR	REF	A
P20	1	20	RCBO	2.5	SERVERY	REF	A
P21	1	20	RCBO	2.5	SERVERY	HEAT LAMPS	A
P22	1	20	RCBO	2.5	SERVERY	HEAT LAMPS	A
P23	1	20	RCBO	2.5	SERVERY	BAINE MARIE	A
P24	1	20	RCBO	2.5	SERVERY	BAINE MARIE	A
P25	1	20	RCBO	2.5	SERVERY	GPO	A
P26	3	20	RCBO	2.5	KITCHEN	DW	A
P27	3	20	RCBO	2.5	KITCHEN	11KW COMBIE	A
P28	1	20	RCBO	2.5	KITCHEN	REF	A
P29	1	20	RCBO	2.5	KITCHEN	REF	A
P30	1	20	RCBO	2.5	KITCHEN	GPO	A
P31	1	20	RCBO	2.5	KITCHEN	REF	A
P32	1	32	RCBO	6.0	KITCHEN	IMPINGER	A
P33	1	32	RCBO	6.0	KITCHEN	IMPINGER	A
P34	1	20	RCBO	2.5	SPORTS BAR	HWS	B
P35	1	20	RCBO	2.5	SPORTS BAR	REF	B
P36	1	20	RCBO	2.5	SPORTS BAR	GLASS WASHER	B



ELECTRICAL DESIGN GROUP

ELECTRICAL BUILDING SERVICES CONSULTANTS

P.O. Box 15, SHERWOOD Q. 4075

Phone: (07) 3278 4375

Website: www.edg.net.au Email: brisbane@edg.net.au

C3747a - MELBOURNE HOTEL, BUNDABERG














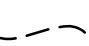
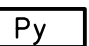
C3747a-0006(A).xls

DISTRIBUTION BOARD DB-L


REVISION A - 07 MAY 2026

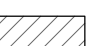
FAULT CURRENT: 6KA							MAIN SWITCH: 160A NON AUTO LOAD BREAK	REV A
CHASSIS SIZE: 48 POLE							SOURCE: MSB	A
CHASSIS RATING: 250A							SUPPLY CABLE: 4C+E 35	A
PHASES: 3								A
REFER TO THE EQUIPMENT SCHEDULE AND NOTES FOR ADDITIONAL REQUIREMENTS. PROVIDE THE DB WITH A FULL WIDTH EMPTY DIN RAIL TO ACCOMMODATE FUTURE CONTACTORS AND CONTROLS IN ADDITION TO THE CONTROLS INCLUDING THE DYNALITE EQUIPMENT PROVIDED AS PART OF THE INITIAL WORKS. PROVIDE THE DB WITH AN AS2293 EMERGENCY LIGHTING CONTROL SYSTEM TO CONTROL THE ASSOCIATED EMERGENCY LIGHTS. PROVIDE THE DB WITH SURGE PROTECTION. ENSURE THE SCHEDULE INCLUDES THE CIRCUIT USE AND LOCATION.								A
CIRC	PH	CIRCUIT BREAKER (amps)	CONTROL EQUIPMENT	CABLE SIZE (mm ²)	LOCATION	CIRCUIT USE		
L1	1	20	RCBO	2.5	INTERNAL	LIGHTS	A	
L2	1	20	RCBO	2.5	INTERNAL	LIGHTS	A	
L3	1	20	RCBO	2.5	ROOF	SIGN	A	
L4	1	20	RCBO	2.5	EXTERNAL	SIGN	A	
L5	1	20	RCBO	2.5	EXTERNAL	SIGN	A	
L6	1	20	RCBO	2.5	INTERNAL	LIGHTS	A	
L7	1	20	RCBO	2.5	INTERNAL	LIGHTS	A	
L8	1	20	RCBO	2.5	INTERNAL	LIGHTS	A	
L9	1	20	RCBO	2.5	INTERNAL	LIGHTS	A	
L10	1	20	RCBO	2.5	INTERNAL	LIGHTS	A	
L11	1	20	RCBO	2.5	INTERNAL	LIGHTS	A	
L12	1	20	RCBO	2.5	INTERNAL	LIGHTS	A	
L13	1	20	RCBO	2.5	INTERNAL	LIGHTS	A	
L14	1	20	RCBO	2.5	INTERNAL	LIGHTS	A	
L15	1	20	RCBO	2.5	KITCHEN	LIGHTS	A	
L16	1	20	RCBO	2.5	SPORTS BAR	FANS	A	
L17	1	20	RCBO	2.5	GAMING DOSA	FANS	A	


LEGEND

-  ELECTRICAL SERVICES SWITCHBOARD.
-  SWITCHBOARD / CONTROL PANEL NOT PROVIDED AS PART OF THE ELECTRICAL SUBCONTRACT.
-  SINGLE POWER OUTLET.
-  DOUBLE POWER OUTLET.
-  SPECIAL PURPOSE OUTLET.
-  ELECTRICAL CONNECTION AS NOTED.
-  SIGNAGE CONNECTION.
-  SINGLE PHASE ISOLATOR.
-  THREE PHASE ISOLATOR.
-  CEILING FAN CONTROLLER.
-  LIGHTING CONTROL SWITCHPANEL, TYPE x.
-  ONE-WAY LIGHT SWITCH.
-  MANUAL DALI POT DIMMER / SWITCH.
-  CIRCUIT LINE.
-  SWITCH LINE.
- DB-x - Py

POWER CIRCUIT DESIGNATION.
DENOTES DB AND CIRCUIT.
- xx

LIGHTING CONTROL CHANNEL REFERENCE.
- 

ELECTRICAL EQUIPMENT AS NOTED.
- 

REFER TO DETAIL NOTED FOR THE AREA SHOWN HATCHED.
ADDITIONAL OUTLETS & FITTINGS MAY BE SHOWN ON DETAIL.
- 

Sx: LED JOINERY / CEILING STRIP LIGHT, TYPE AS NOTED.
- E1

E1: GENERAL CEILING RECESSED LED EMERGENCY LIGHT, WHITE.
- E2

E2: GENERAL CEILING RECESSED LED EMERGENCY LIGHT, BLACK.
- E3

E3: SURFACE MOUNTED LED EMERGENCY LIGHT, BLACK.
- EX

EX: EMERGENCY LED EXIT LIGHT, WHITE.
- BK EX

EX BK: EMERGENCY LED EXIT LIGHT, BLACK.
- PD01

PD01: DECORATIVE SUSPENDED PENDANT.
- PD02

PD02: DECORATIVE SUSPENDED PENDANT.
- PD03

PD03: DECORATIVE SUSPENDED PENDANT.
- TL01

TL01: SURFACE TRACK LIGHTS, BLACK.
- WL01

WL01: DECORATIVE WALL LIGHT.
- WL02

WL02: DECORATIVE WALL LIGHT.
- WL03

WL03: DECORATIVE WALL LIGHT.
- WL04

WL04: DECORATIVE WALL LIGHT.
- WL05

WL05: DECORATIVE WALL LIGHT.
- WL06

WL06: DECORATIVE WALL LIGHT.
- GL01

GL01: GARDEN STAKE LIGHT.
- UL01

UL01: EXISTING INGROUND UPLIGHT TO BE REPLACED.
- UL02

UL02: EXISTING INGROUND UPLIGHT TO BE REPLACED.
- SL01

SL01: 1200 LONG SURFACE BATTEN.
- SL02

SL02: SURFACE CAN DOWNLIGHT, WHITE.

LEGEND

- RD01

RD01: RECESSED DOWNLIGHT, BLACK.
- RD02

RD02: RECESSED DOWNLIGHT, WHITE.
- RD03

RD03: RECESSED DOWNLIGHT, WHITE.
- RD04

RD04: RECESSED ADJUSTABLE DOWNLIGHT, WHITE.
- RD05

RD05: RECESSED DOWNLIGHT, WHITE.
- RD06

RD06: RECESSED DOWNLIGHT, WHITE.
- RD07

RD07: RECESSED DOWNLIGHT, WHITE.
- RD08

RD08: RECESSED DOWNLIGHT, BLACK.
- RT01

RT01: 300 x 1200 FLAT PANEL LIGHT.
- HL01

HL01: HEAT LAMP TYPE 1.
- HL02

HL02: HEAT LAMP TYPE 2.
- F01

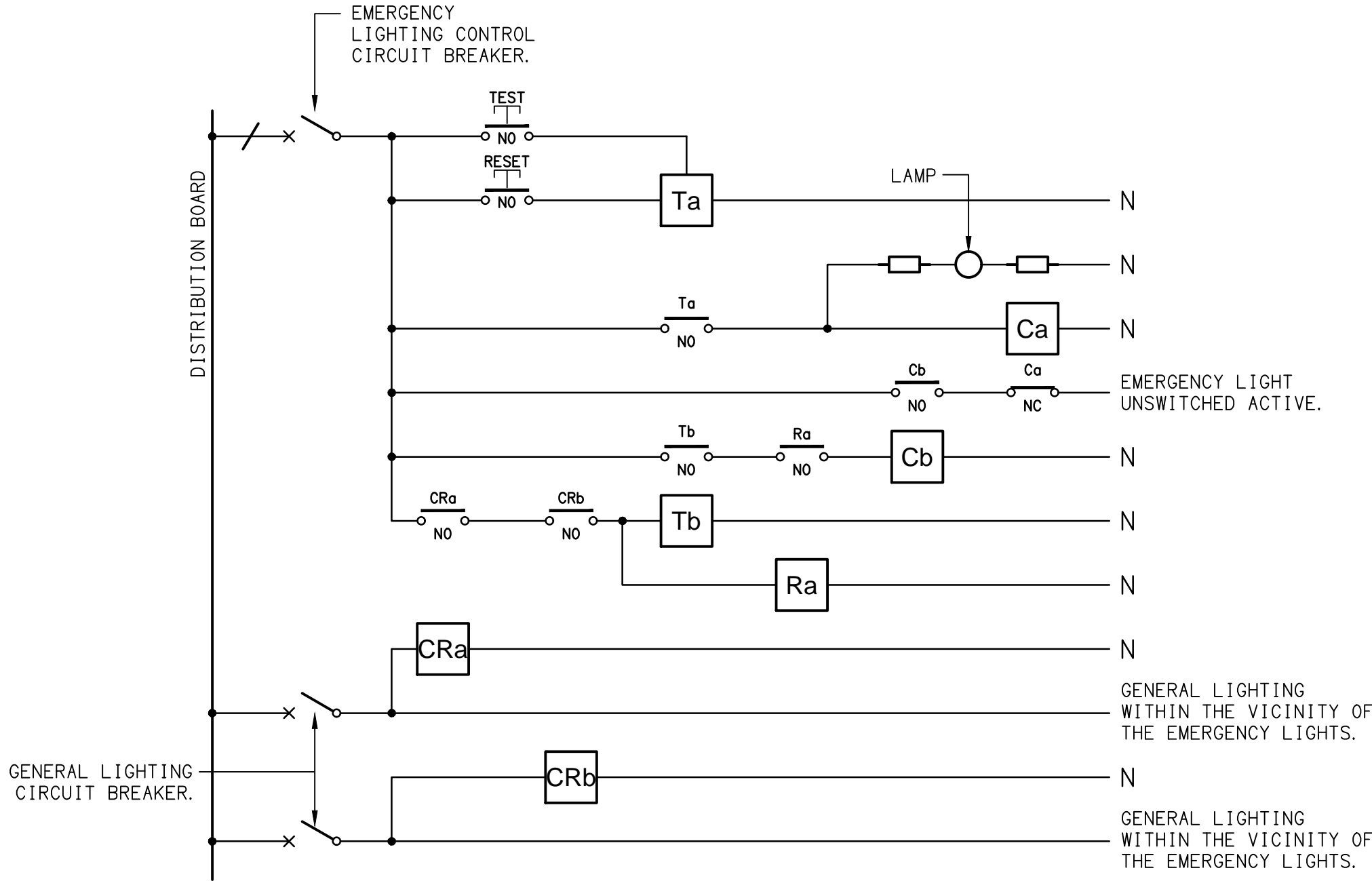
F01: NEW 1400 DIA CEILING FAN.
- F02

F02: NEW 900 DIA CEILING FAN.
- FE

FE: EXISTING CEILING FAN.

EQUIPMENT:

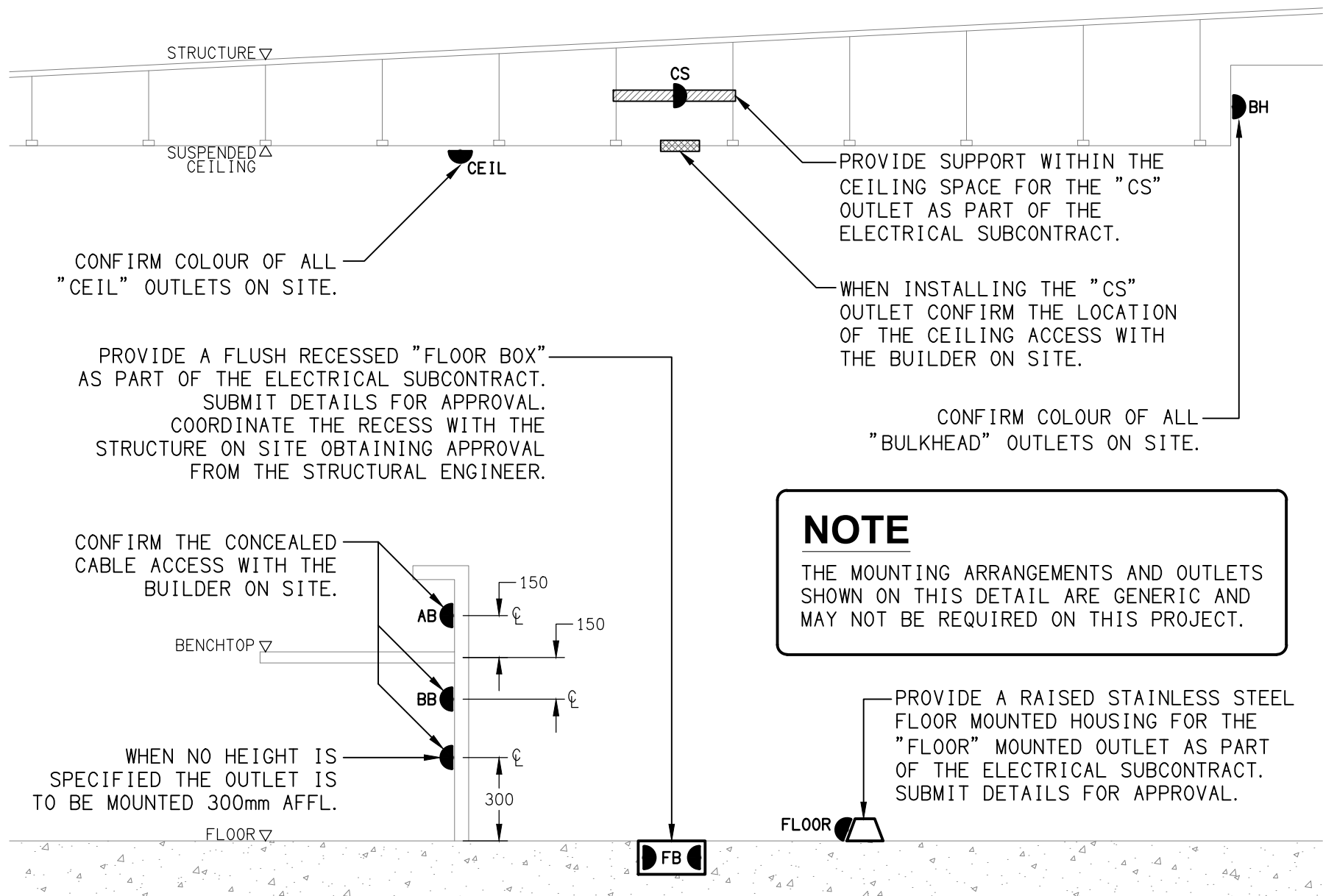
- TEST - TEST PUSH BUTTON MOUNTED ON THE DISTRIBUTION BOARD ESCUTCHEON.
- RESET - RESET PUSH BUTTON MOUNTED ON THE DISTRIBUTION BOARD ESCUTCHEON.
- LAMP - AMBER TEST INDICATING LAMP MOUNTED ON THE DISTRIBUTION BOARD ESCUTCHEON.
- Ta - ADJUSTABLE 0-3 HOUR TIMED RELAY.
- Tb - 15 MINUTE RUN-ON TIMER TO OPERATE UPON THE RETURN OF MAINS POWER.
- Cx - CONTACTOR x.
- CRx - CONTROL RELAY x.
- Rx - RELAY x.



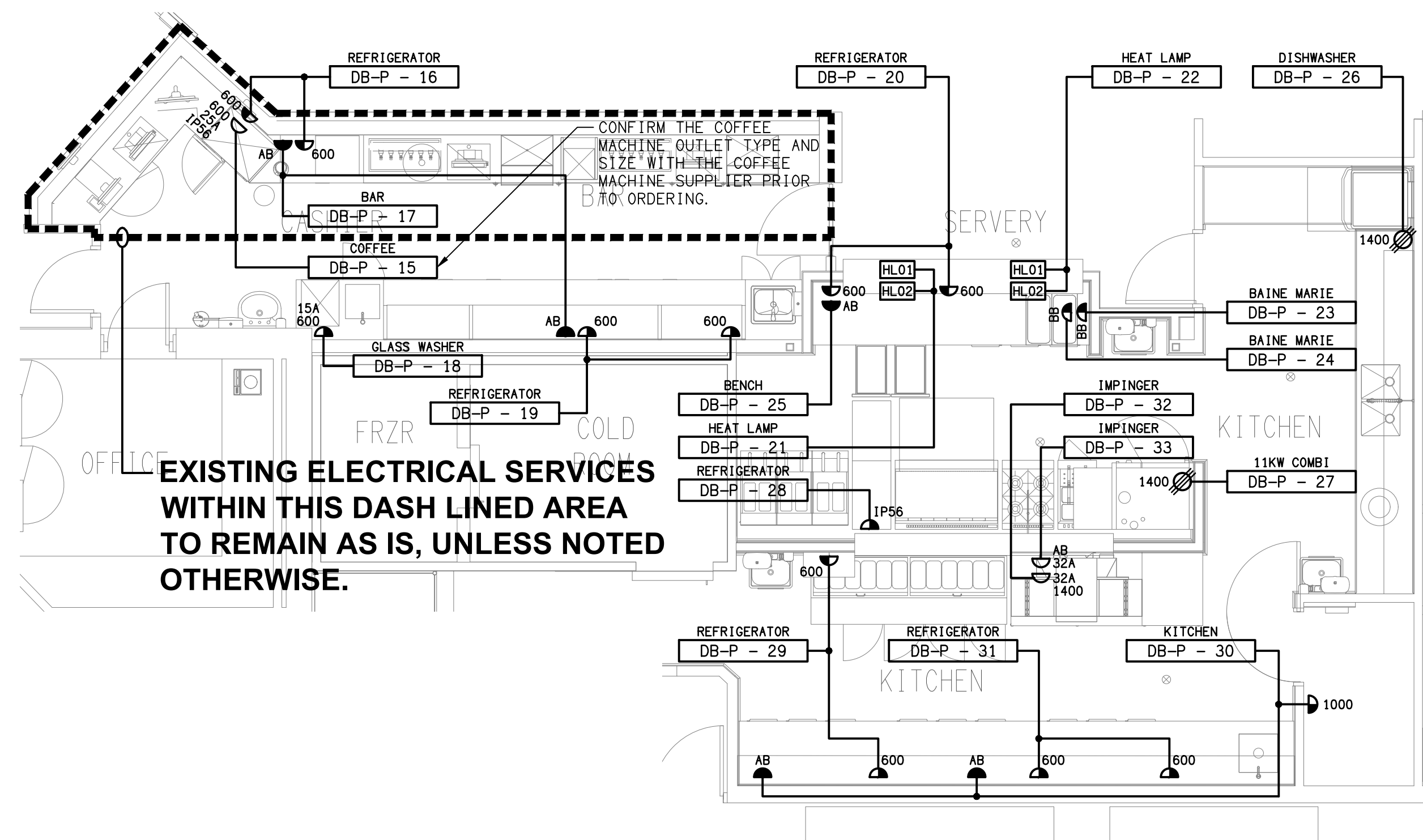
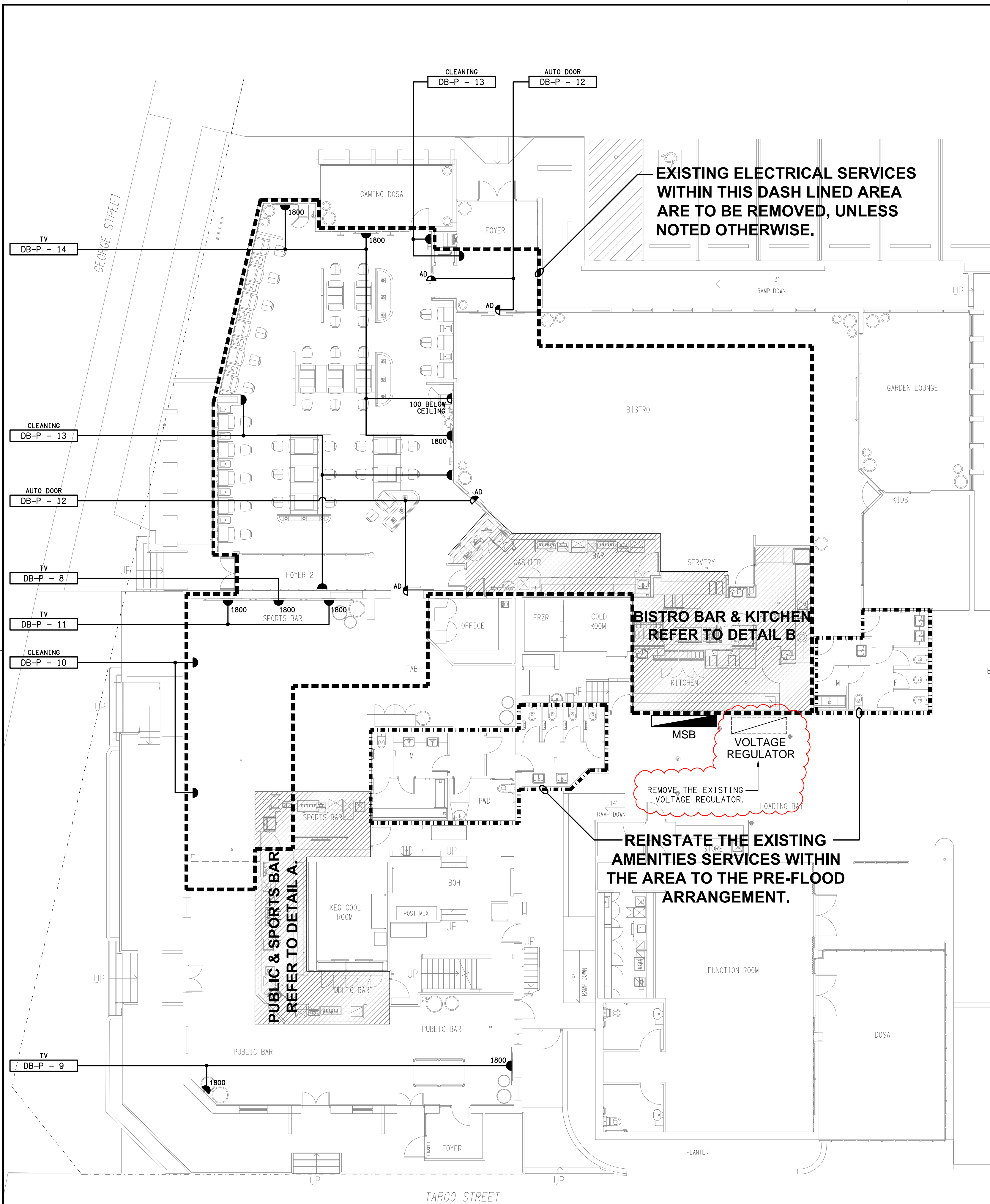
NOTES

1. THE EMERGENCY LIGHT UNSWITCHED ACTIVE / GENERAL LIGHTING SWITCHED ACTIVE CIRCUIT ARRANGEMENT AND CONTROL IS TYPICAL FOR ALL CIRCUITS SUPPLYING EMERGENCY LIGHTS.
2. PROVIDE ADDITIONAL CONTROL RELAYS (CRx) CONFIGURED AS PER CRa AND CRb FOR ALL ADDITIONAL LIGHTING CIRCUITS THAT SUPPLY LIGHTS IN THE VICINITY OF THE EMERGENCY LIGHTS.

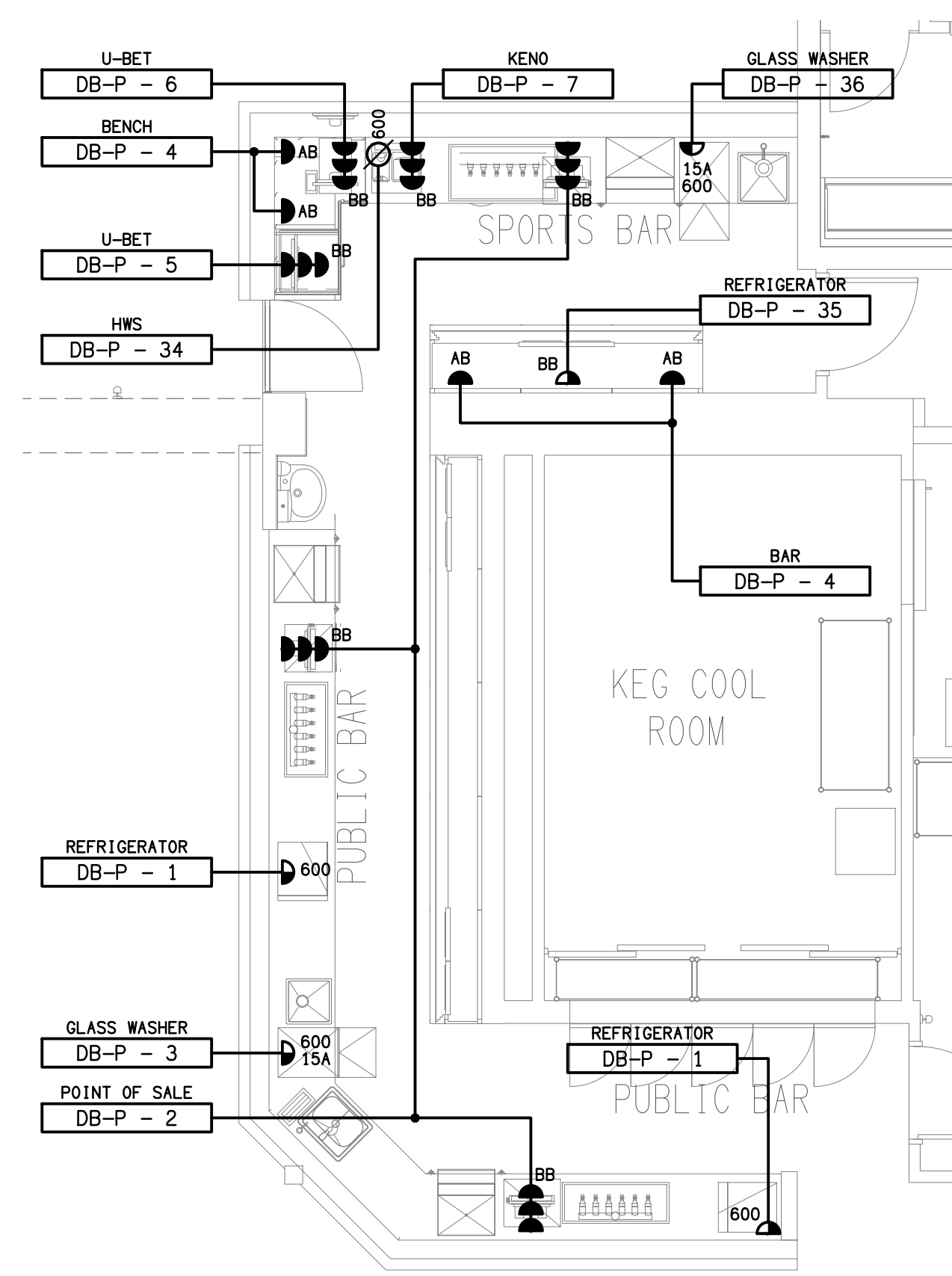
SCHEMATIC
EMERGENCY LIGHTING
NOT TO SCALE



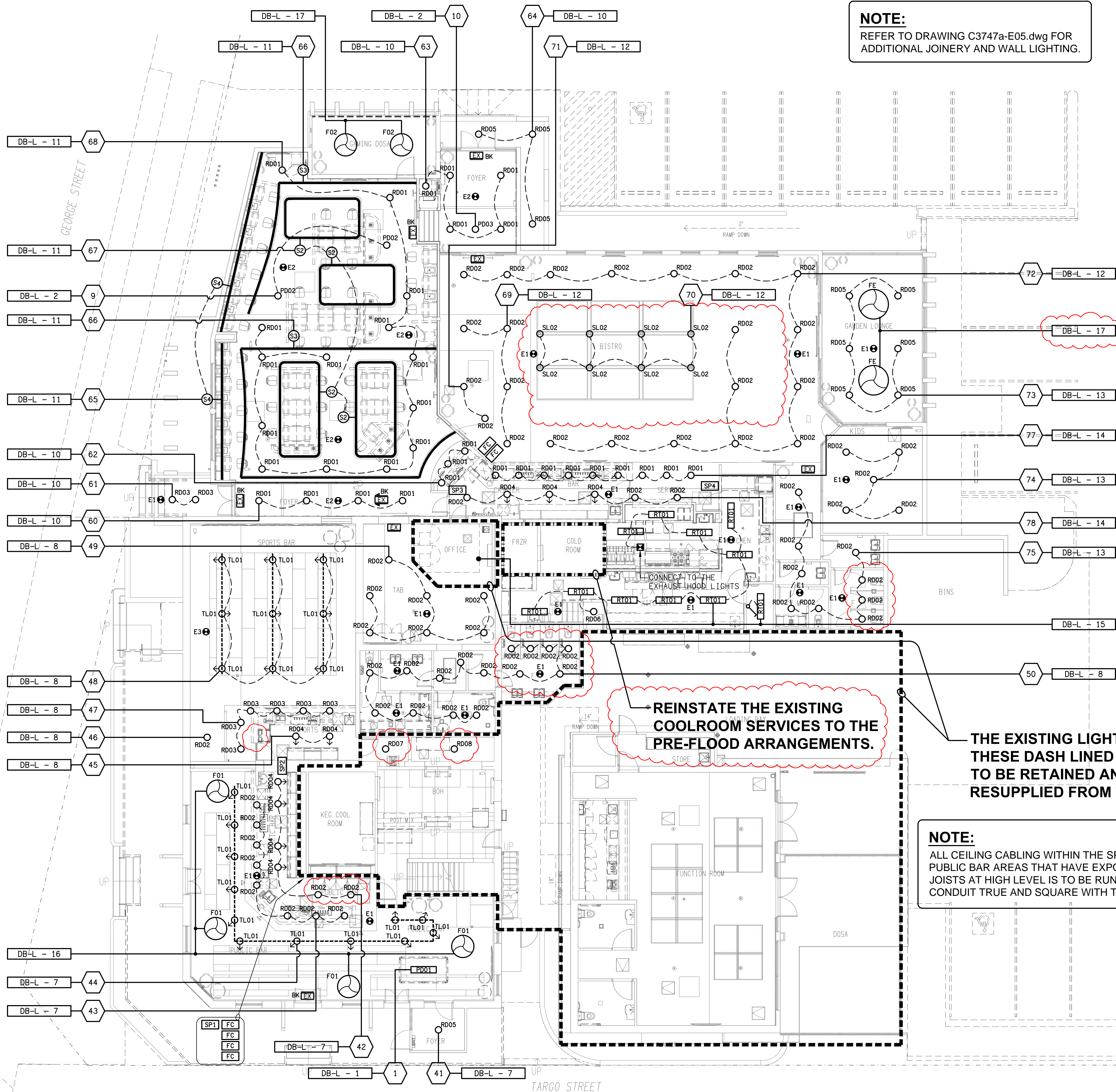
DETAIL
TYPICAL OUTLET MOUNTINGS
NOT TO SCALE

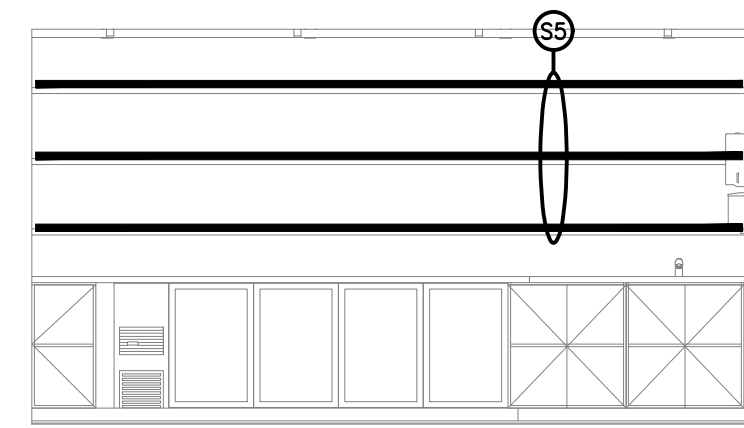
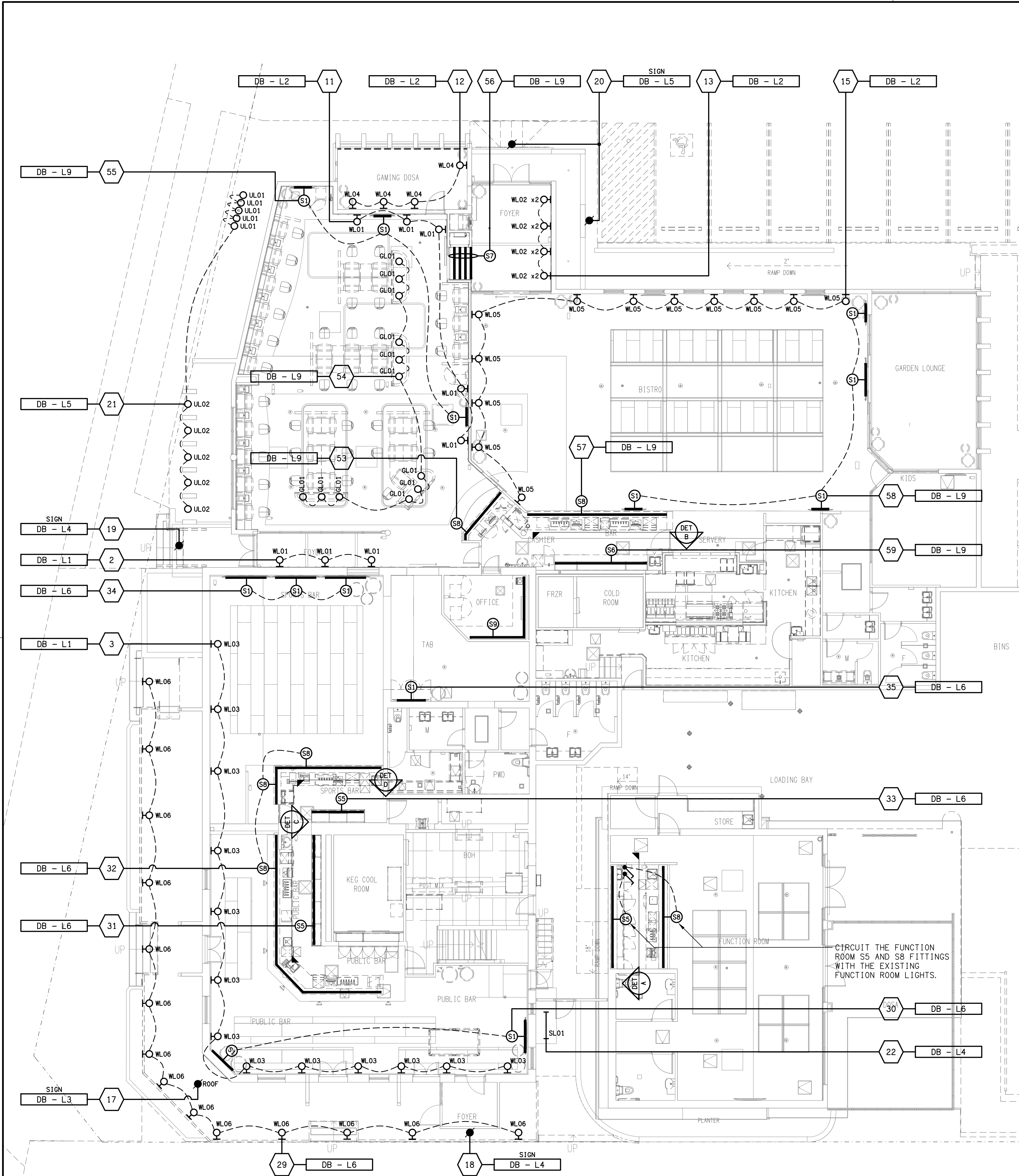


DETAIL B
BISTRO BAR & KITCHEN PLAN
SCALE 1:50

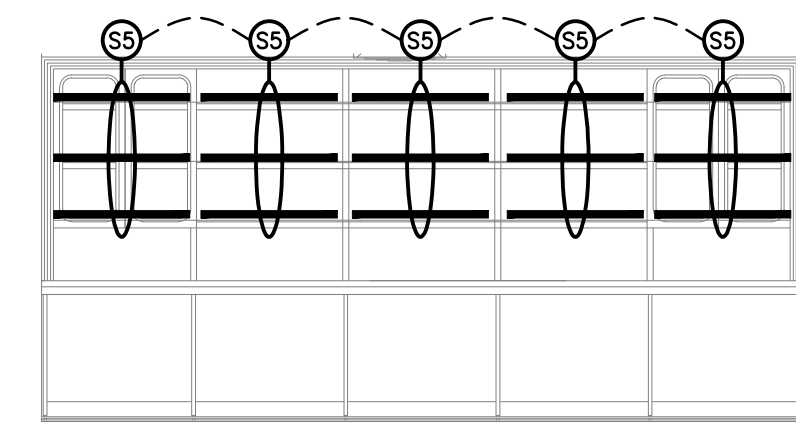


DETAIL A
PUBLIC & SPORTS BAR PLAN
SCALE 1:50

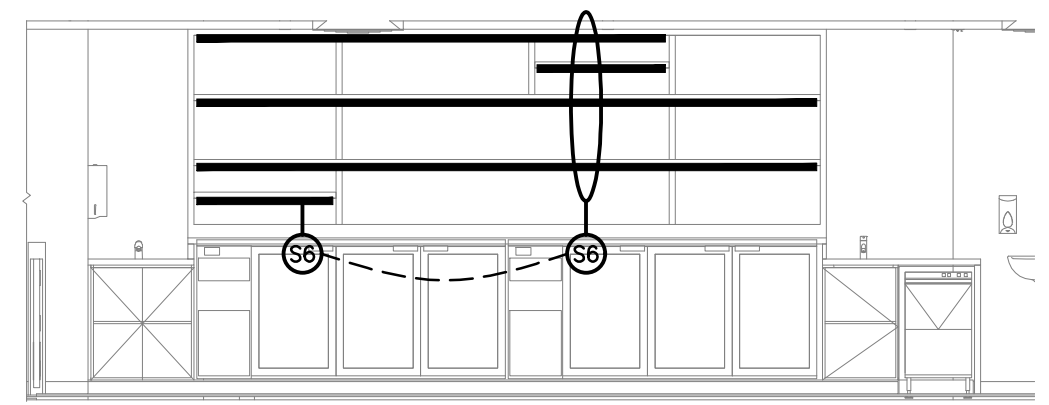




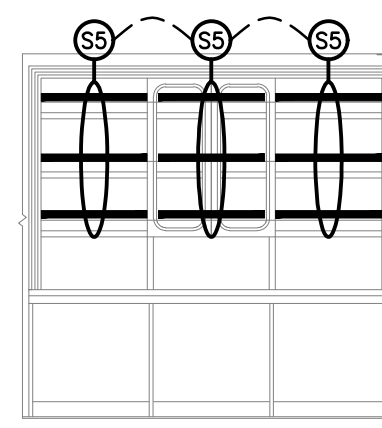
DETAIL A
FUNCTION BAR REAR WALL ELEVATION
SCALE 1:50



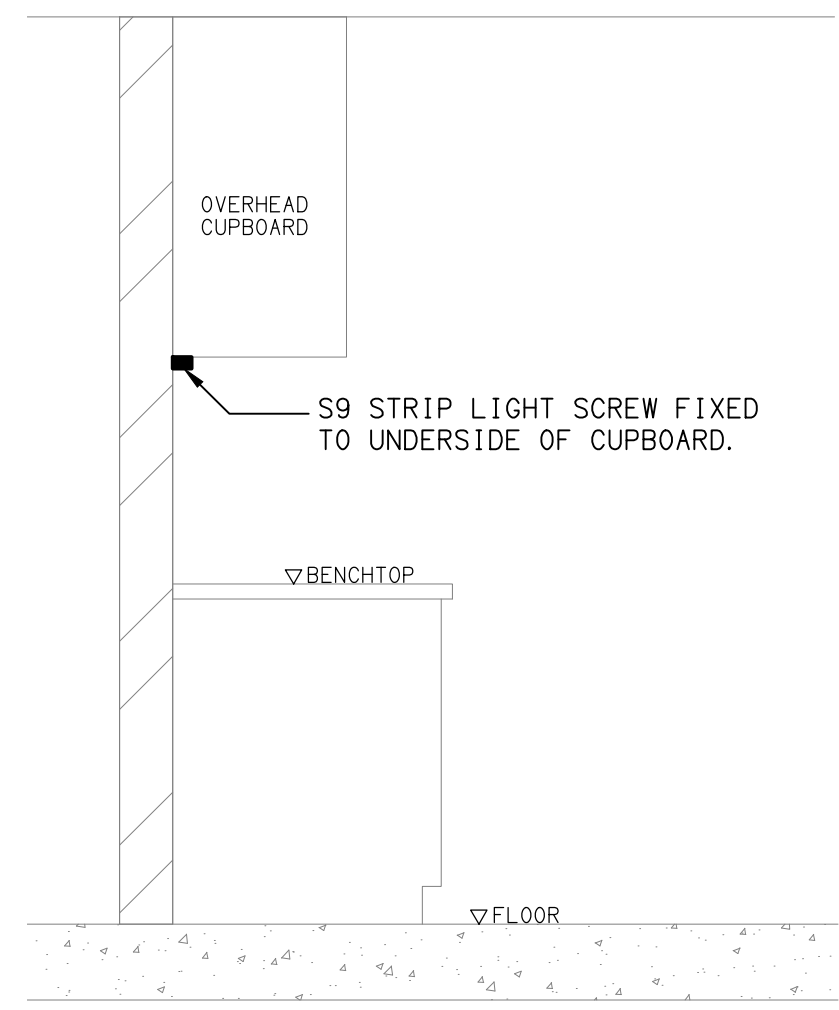
DETAIL C
SPORTS BAR REAR WALL ELEVATION
SCALE 1:50



DETAIL B
BISTRO BAR REAR WALL ELEVATION
SCALE 1:50



DETAIL D
PUBLIC BAR REAR WALL ELEVATION
SCALE 1:50



DETAIL E
"S9" TYPE STRIP LIGHT MOUNTING
NOT TO SCALE